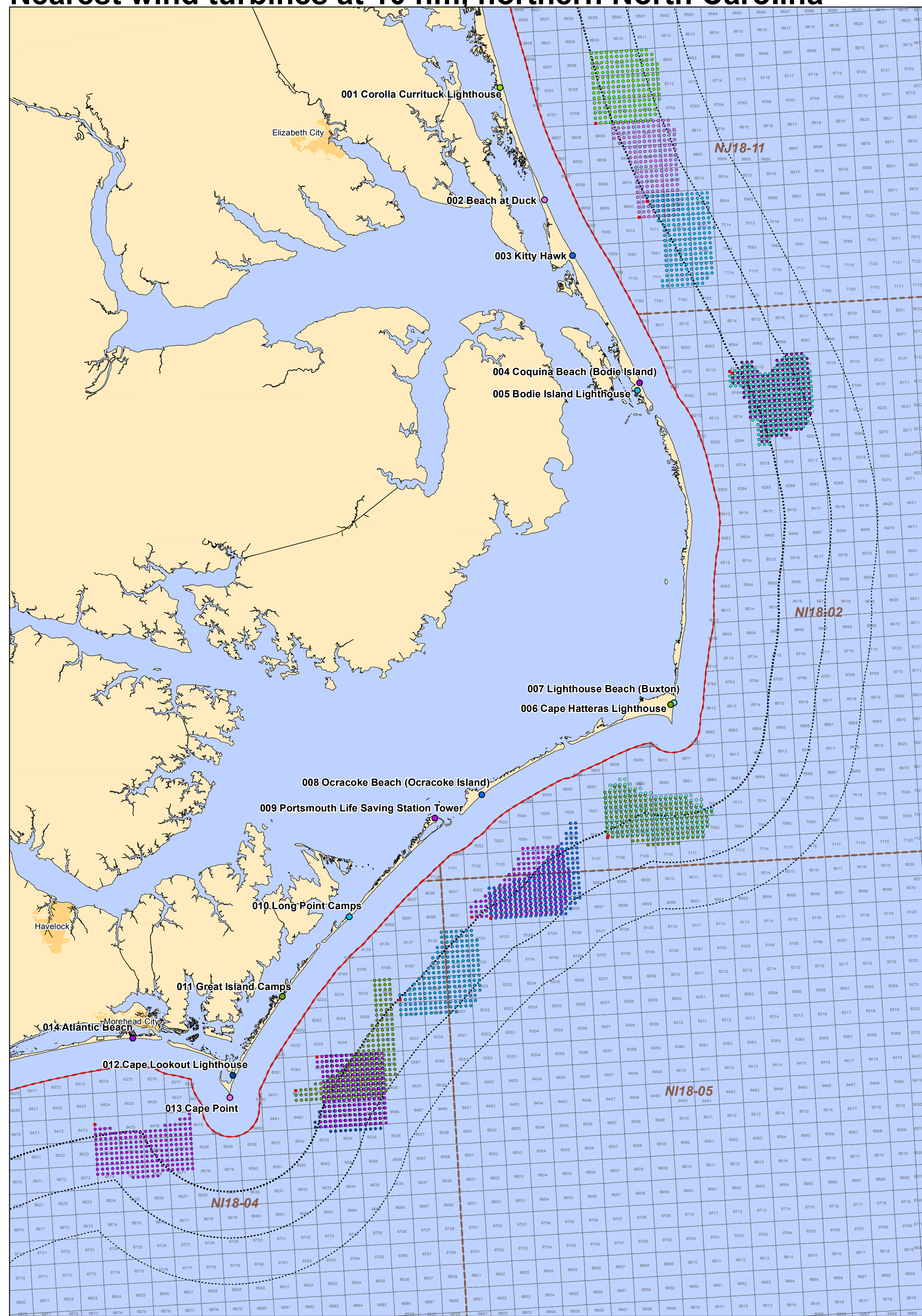
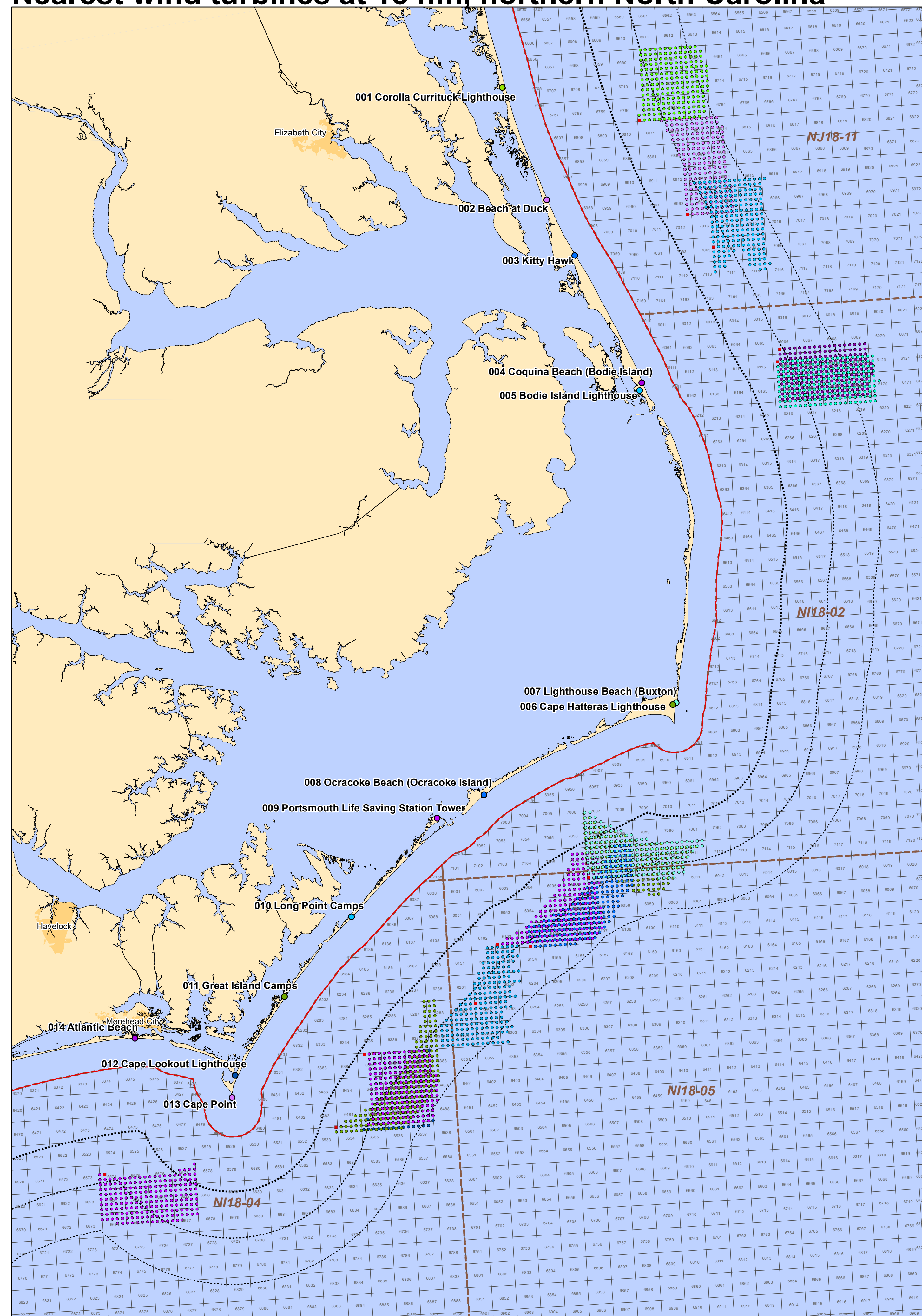


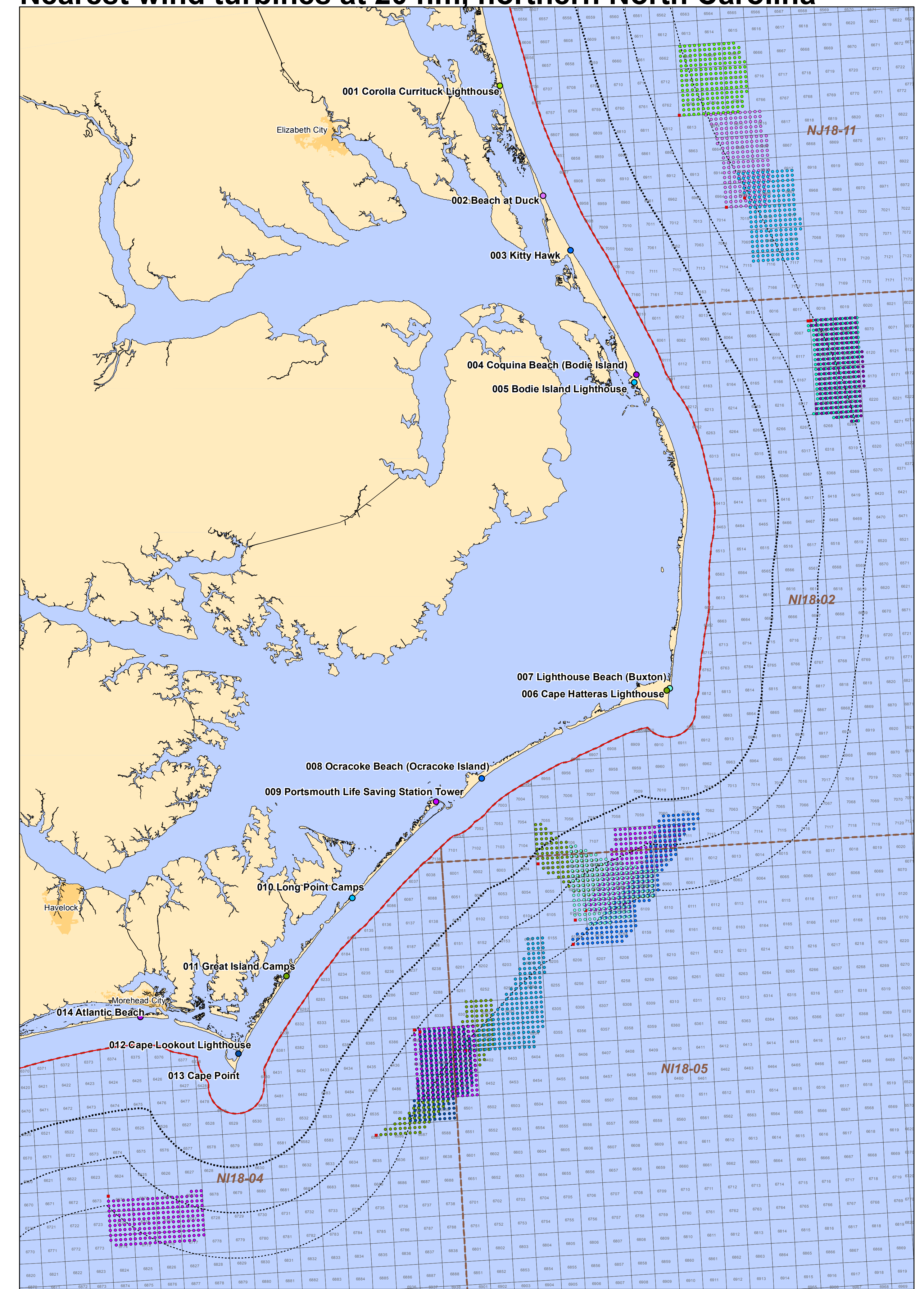
Nearest wind turbines at 10 nm, northern North Carolina



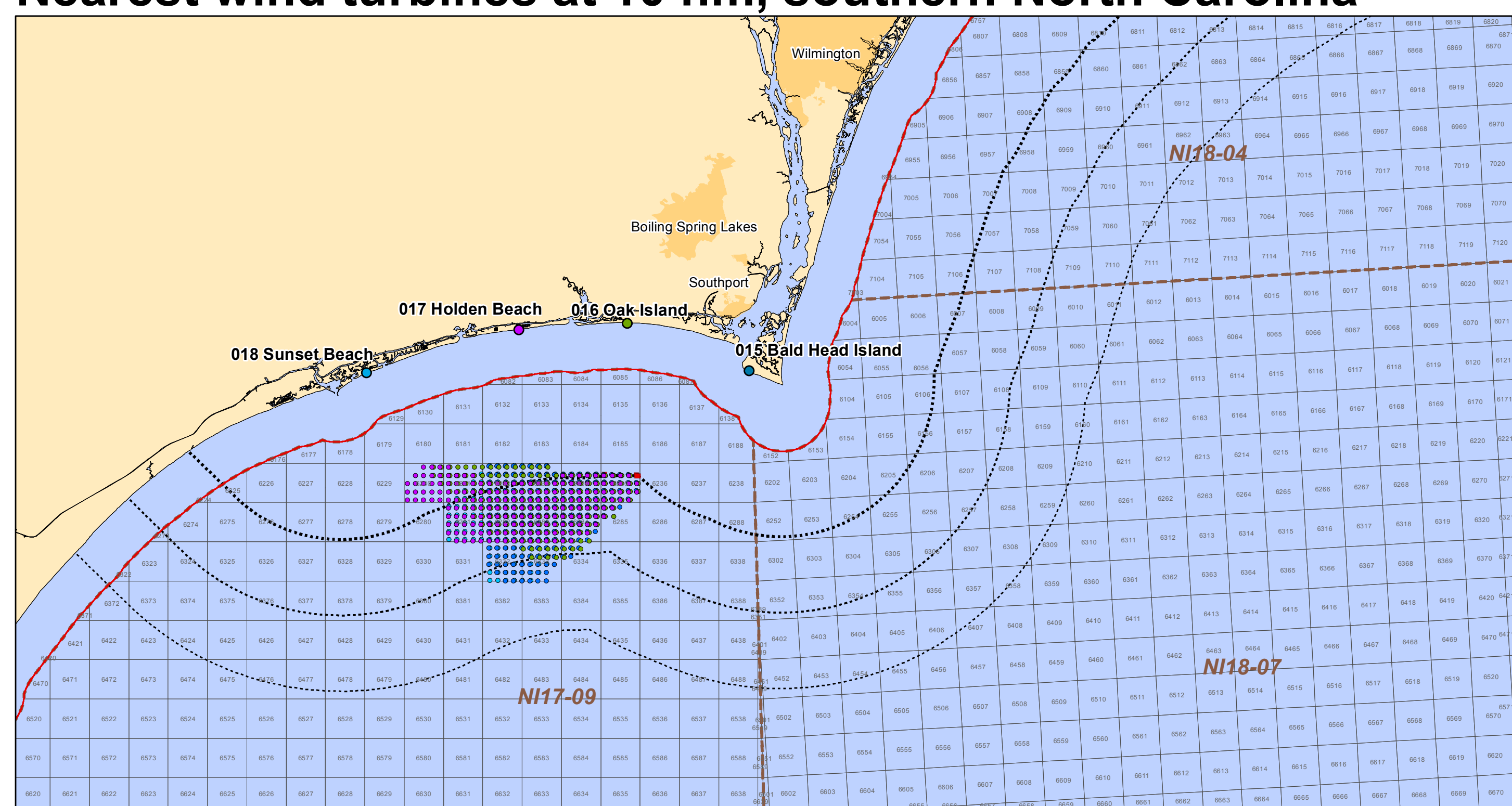
Nearest wind turbines at 15 nm, northern North Carolina



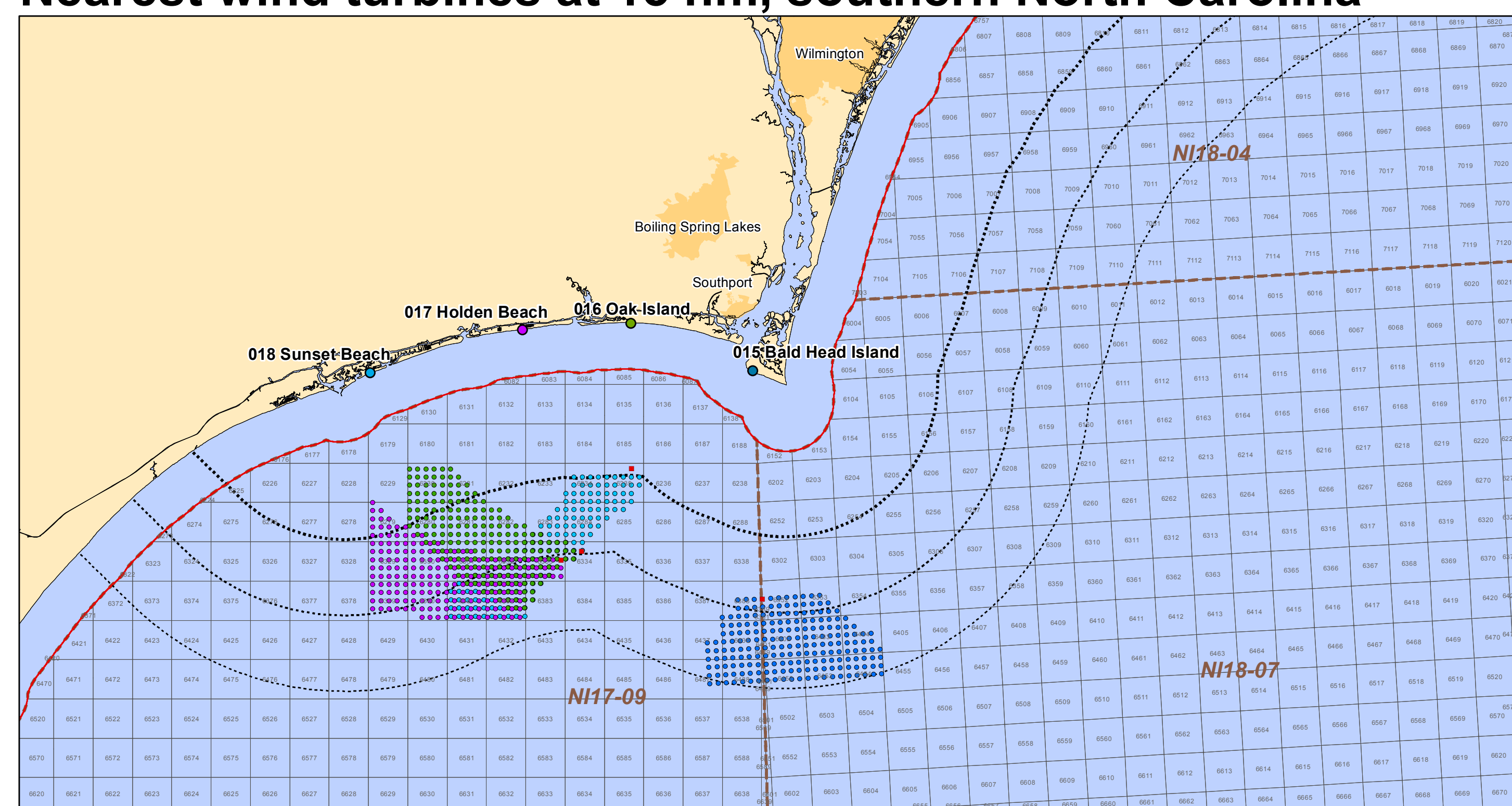
Nearest wind turbines at 20 nm, northern North Carolina



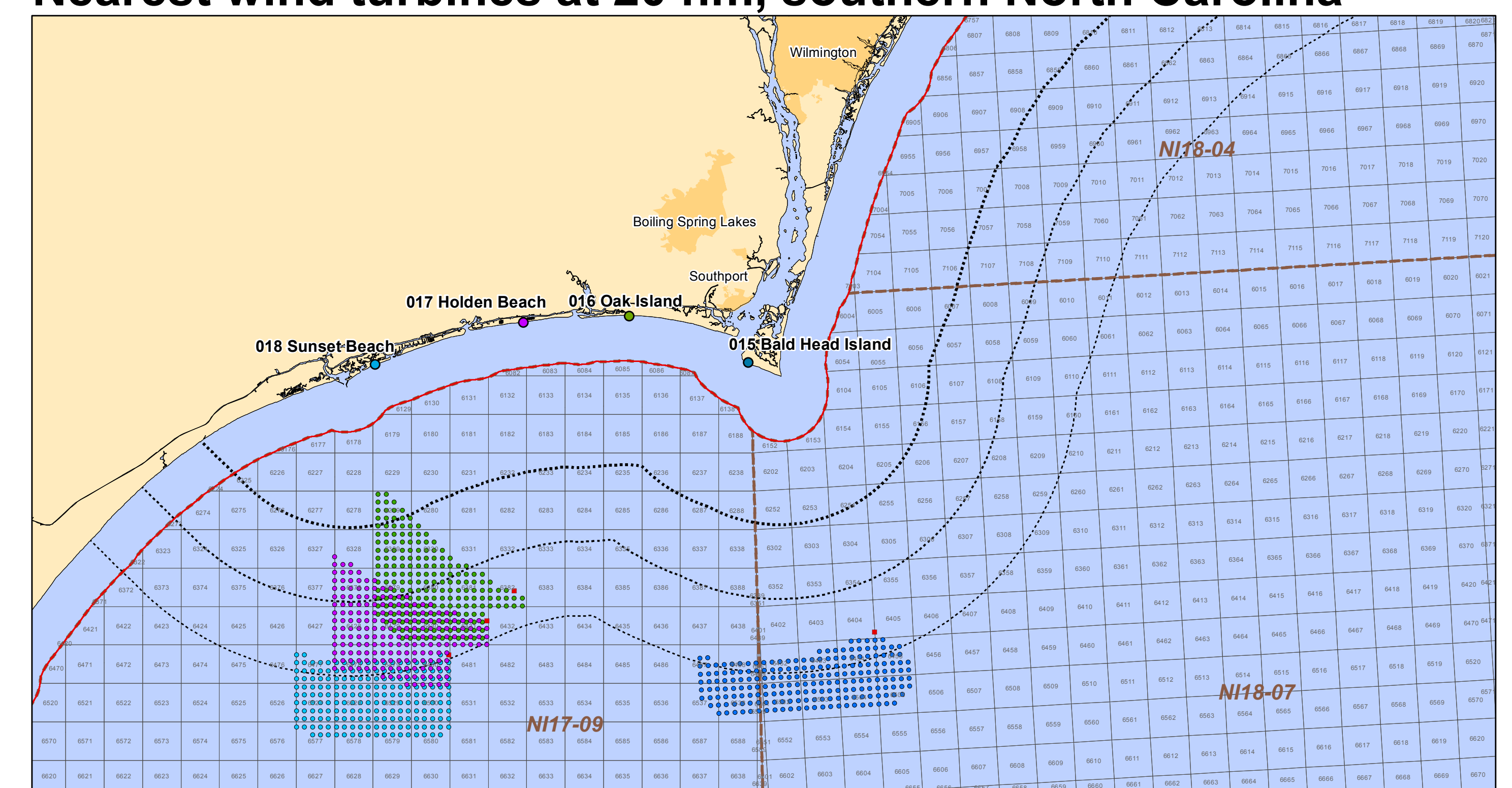
Nearest wind turbines at 10 nm, southern North Carolina



Nearest wind turbines at 15 nm, southern North Carolina



Nearest wind turbines at 20 nm, southern North Carolina



Visualization Study for Offshore North Carolina
Project Location Map

June 2012



Legend

- Substation
- Wind Turbine
- Viewpoint Location
- 10 nautical miles
- 15 nautical miles
- 20 nautical miles
- - - - - Protraction Block Boundary
- OCS Block Boundary
- City
- Submerged Lands Act Boundary

Site	Latitude (degrees)	Longitude (degrees)
001 Corolla Currituck Lighthouse	36.376690	-75.830630
002 Beach at Duck	36.170380	-75.745370
003 Kitty Hawk	36.067520	-75.690540
004 Coquina Beach	35.832440	-75.557570
005 Bodie Island Lighthouse	35.818522	-75.563265
006 Cape Hatteras Lighthouse	35.250530	-75.528880

Site	Latitude (degrees)	Longitude (degrees)
007 Lighthouse Beach	35.253860	-75.521300
008 Ocracoke Beach	35.106870	-75.952830
009 Portsmouth Life Saving Sta. Tower	35.068590	-76.057530
010 Long Point Camps	34.898978	-76.255153
011 Great Island Camps	34.761233	-76.409680
012 Cape Lookout Lighthouse	34.622760	-76.524520

Site	Latitude (degrees)	Longitude (degrees)
013 Cape Point	34.583208	-76.533863
014 Atlantic Beach	34.697860	-76.739220
015 Bald Head Island	33.857910	-78.002625
016 Oak Island	33.913990	-78.161380
017 Holden Beach	33.910173	-78.304547
018 Sunset Beach	33.866875	-78.506475

T. J. Boyle Associates
landscape architects • planning consultants