



BOEMRE North Carolina Renewable Energy
Task Force
11 May 2011

John R. Walters
Waterways Management Section Chief
Fifth Coast Guard District



CG ROLE FOR OREI'S



- Cooperating agency for National Environmental Policy Act (NEPA) purposes with the LPA
 - ✓ Develop RECOMMENDED terms and conditions to provide for safety of navigation
 - ✓ Minimize potential impacts on other CG missions (SAR, Marine Safety, Maritime Security, Maritime Mobility, Protection of Natural Resources, National Defense)
- **WILL NOT APPROVE/DISAPPROVE PROJECT OR ISSUE PERMIT**



AUTHORITY



- PORTS AND WATERWAYS SAFETY ACT (PWSA) P.L. 95-474; 33 U.S.C. 1223
- SECRETARY OF DHS
 - “Designate necessary fairways and traffic separation schemes” to “provide safe access routes ... to and from ports or other places... United States.”
 - Delegated to the Coast Guard
 - Port Access Study (PARS)



PARS REQUIREMENTS



- REQUIRED WHEN WE CONSIDER NECESSITY FOR FAIRWAYS OR TRAFFIC SEPARATION SCHEME(S)
- OPTIONAL FOR OTHER ROUTING MEASURES
 - RECOMMENDED ROUTES
 - ANCHORAGE/NO ANCHORAGE AREA
 - ATBA



STUDY ITSELF (CON'T)



- CONSULTATIONS
 - VARIOUS FED AND STATE AGENCIES
 - MARITIME COMMUNITY
 - PORT AND HARBOR AUTH/ASSOC
 - LOCAL CITIZEN GROUPS
- ANALYZE DATA/RECOMMENDATIONS
- RULEMAKING AND/OR IMO PROCESSES
- Atlantic Coast PARS signed & forwarded to FR 5/6/2011...completion---5/1/2012



SITE LOCATION



- Traffic Survey
 - Types
 - Uses
- Navigation Safety Risk Assessment
 - Within the site
 - Proximity





NAVIGATION



- Tides and Currents
- Weather
- Depths
- Visual Navigation
- Communications
- Radar
- Marking

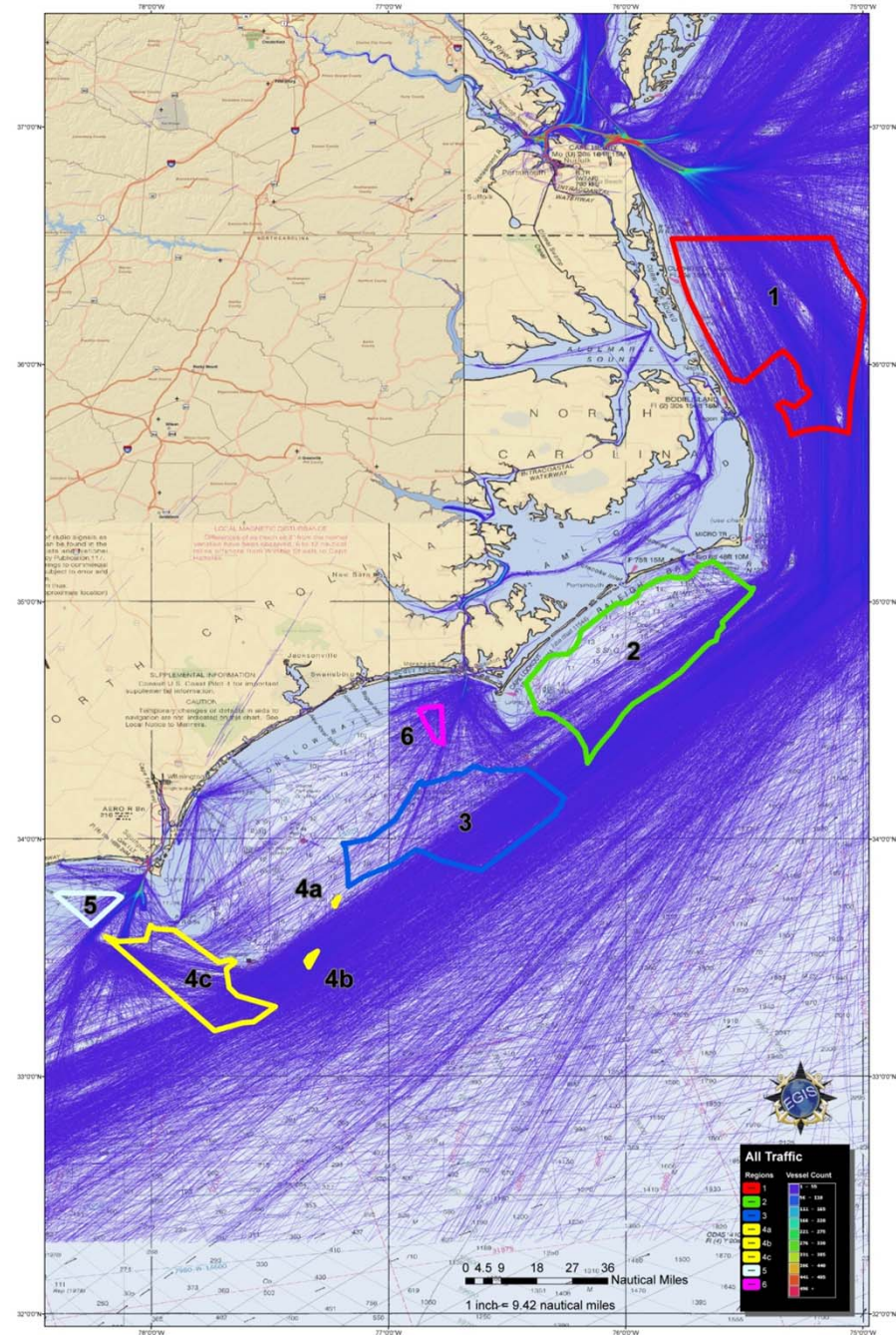


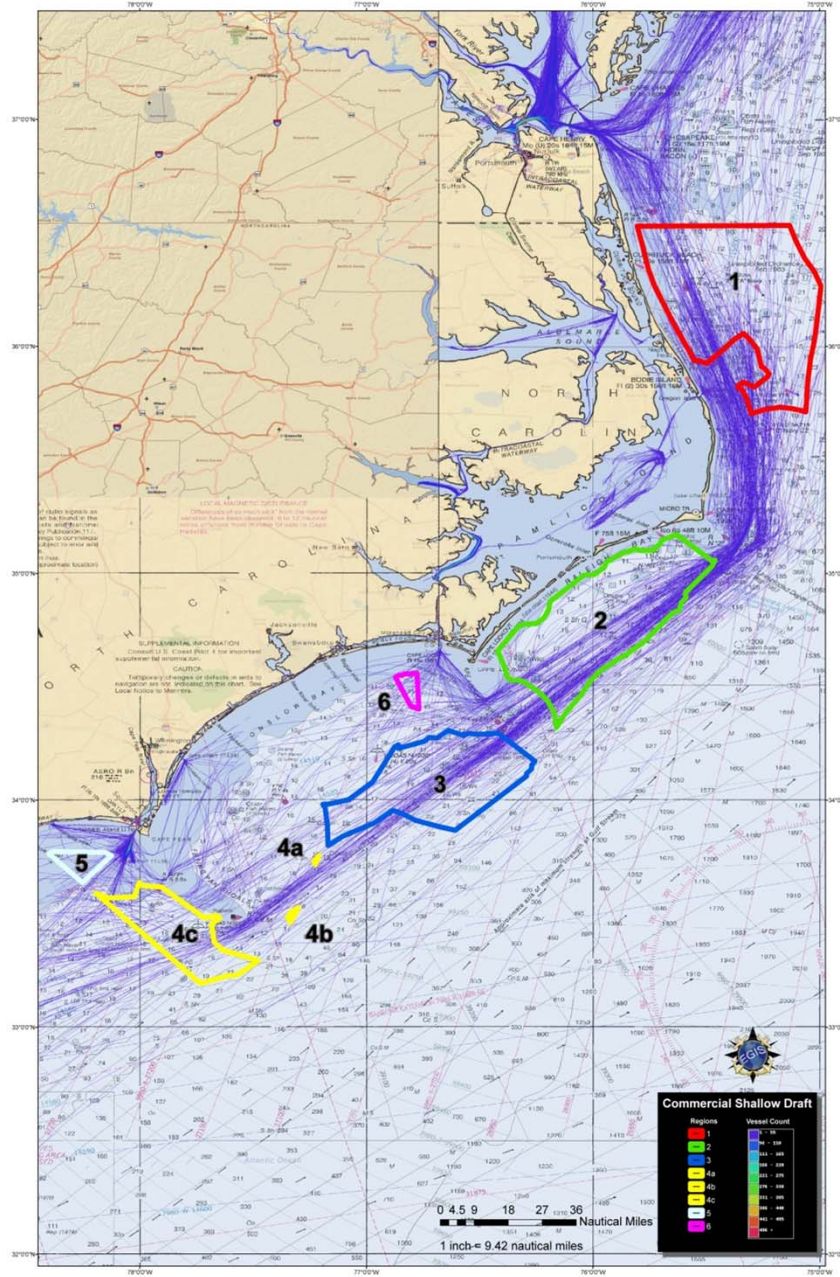


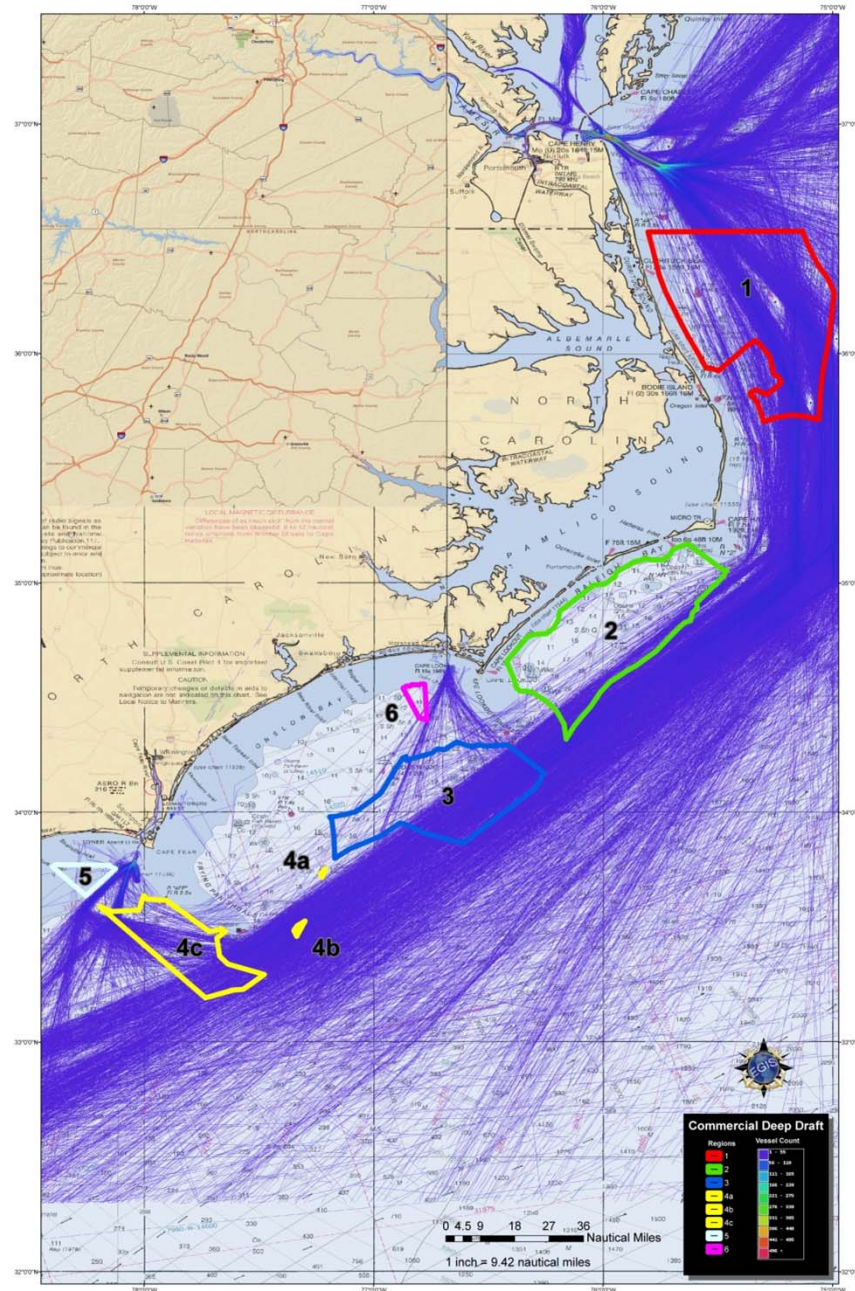
Structure Lighting

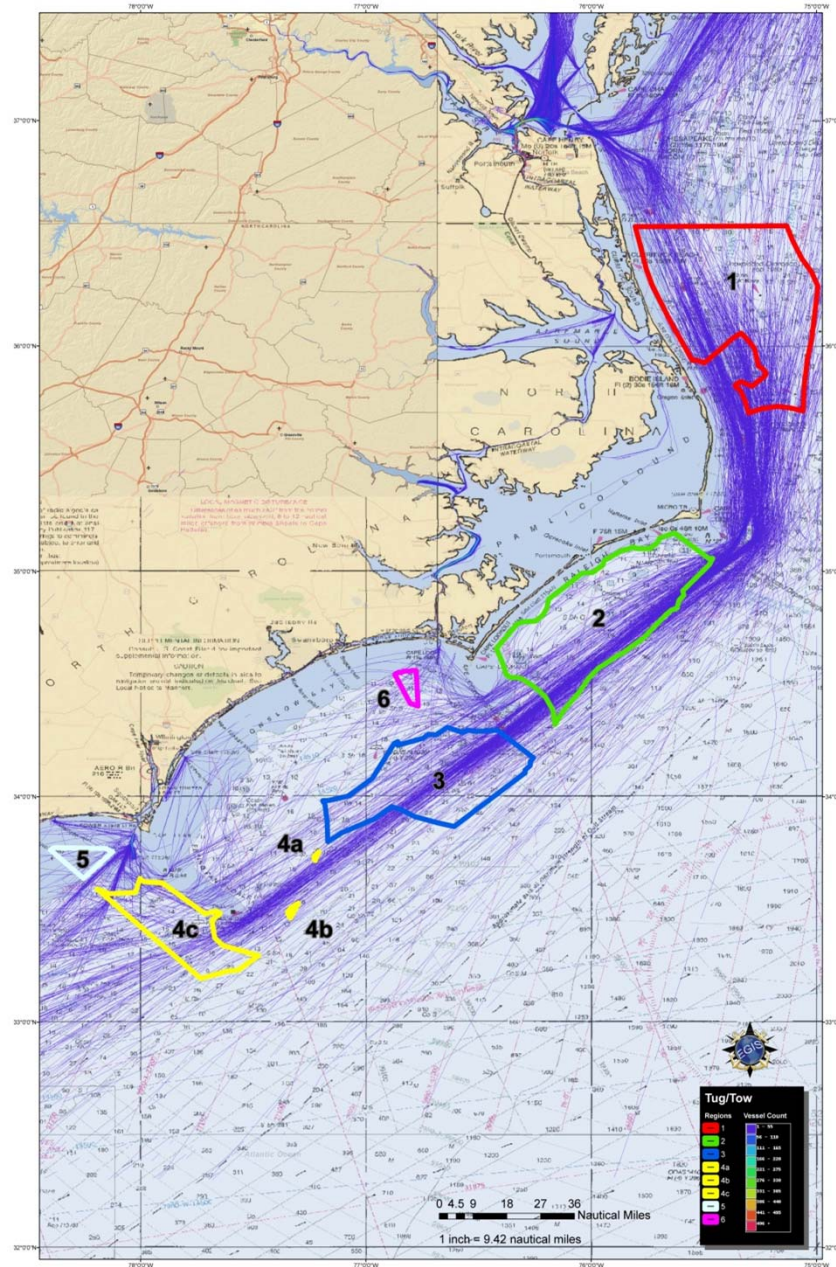


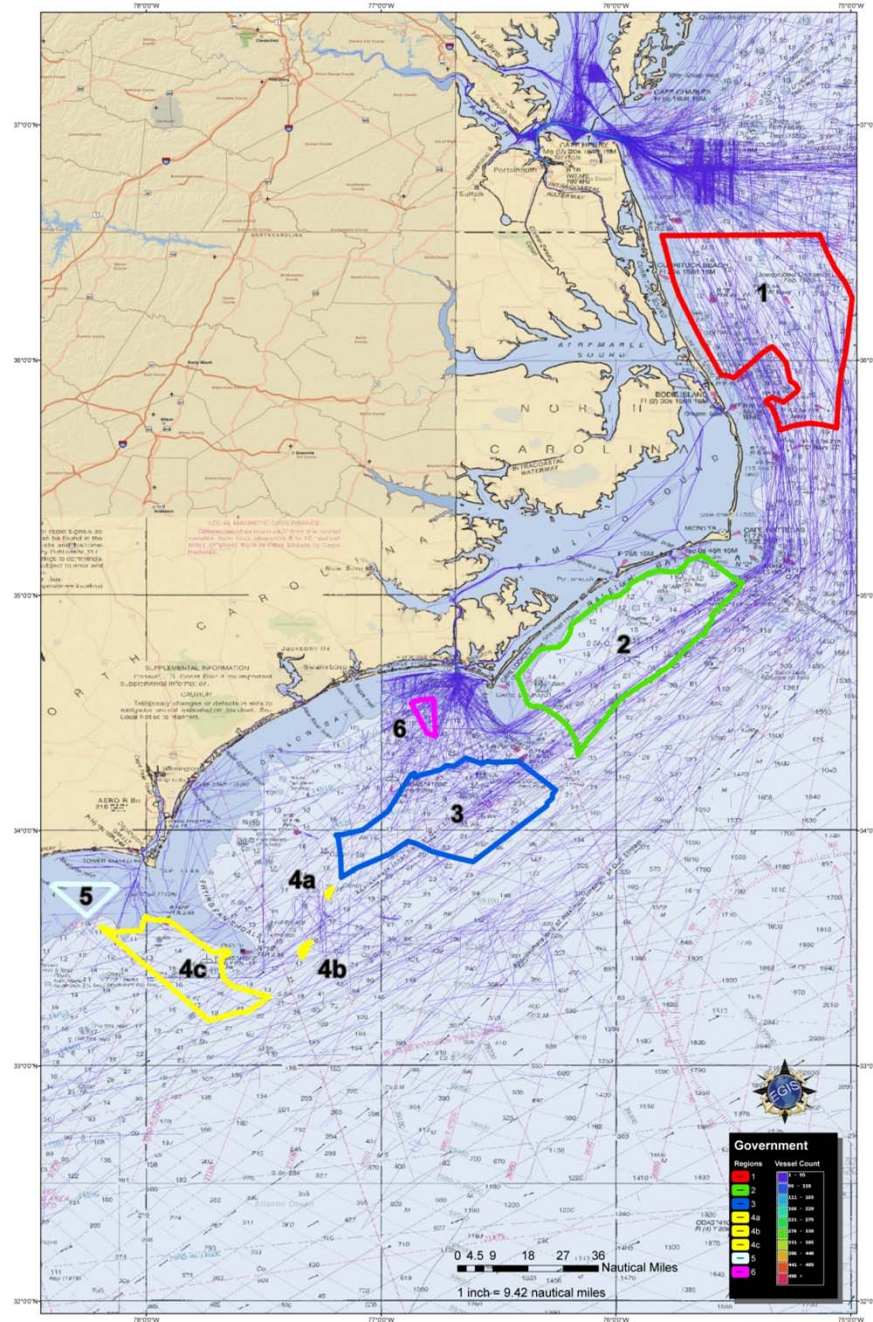
- **Geographic Range:** maximum distance the curvature of the earth permits a light to be seen from a particular height of eye: $1.17 \sqrt{\text{height}}$
 - Light elevation = 30'
 - Distance to the horizon = 6.4NM
- Observers height will increase the distance the light can be detected
- All around amber lighting, retroreflective material, alpha-numeric identifiers, RACON,













MITIGATION MEASURES



- Charting / Marine Information
- COLREGs
- Routing Measures
- Exclusion Zones
- Monitoring
- Shutdown Procedures
- Others



QUESTIONS?



john.r.walters@uscg.mil
(757) 398-6230

