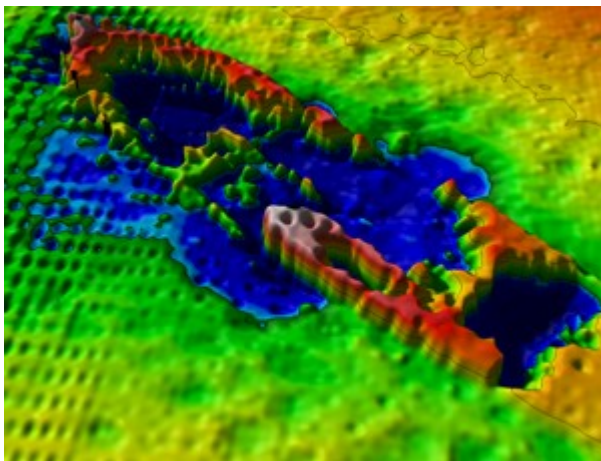


# South Carolina Cooperative Agreement:

Atlantic Offshore Wind Energy Development: Geophysical Mapping and Identification of Paleolandscapes and Historic Shipwrecks Offshore South Carolina



# South Carolina Cooperative Agreement

- Notice of Funding Availability (NOFA) issued on July 30, 2014
- NOFA issued for the South Carolina Sea Grant Consortium
- South Carolina Sea Grant Consortium submitted a proposal on August 29, 2014
- Work slated to begin late Fall and will continue for two years

# BOEM Needs

- Baseline data on South Carolina planning area including:
  - Hard bottom habitat
  - Potential historic shipwrecks
  - Paleolandscapes

# Project Objectives

- Initiate a systematic geophysical survey of two areas offshore of South Carolina that have high probability of being initially developed for wind power generation.
- Conduct detailed surveys to perform the initial steps to assess geoarchaeological potential of pre-historic habitation at select sites and to provide baseline information concerning the potential to identify prehistoric and relict landforms, historic shipwrecks and objects, and hazardous MEC/UXO lying in the SC-OCS.
- Conduct a detailed geophysical survey connecting the proposed survey area and a similarly extensive geophysical survey completed through a partnership with the USGS from 0-5 miles offshore.

# How BOEM Will Use Study Results?

- BOEM planning efforts offshore South Carolina
  - Area Identification
- Springboard for future research
  - Additional investigations of paleolandscapes/shipwrecks
- BOEM environmental documents and consultations
  - NEPA documents
  - National Historic Preservation Act
- Inform decision makers

Brian Krevor  
Environmental Protection Specialist

[brian.krevor@boem.gov](mailto:brian.krevor@boem.gov)

703-787-1346

Bureau of Ocean Energy Management  
Office of Renewable Energy Programs

