



South Carolina Task Force Webinar

BUREAU OF OCEAN ENERGY MANAGEMENT

MAY 17, 2016

CASEY REEVES
PROJECT COORDINATOR

SOUTH CAROLINA STATE LEAD



OCS Renewable Energy Program

*“(T)he outer Continental Shelf is a **vital national resource reserve held by the Federal Government for the public**, which should be made available for **expeditious and orderly development**, subject to **environmental safeguards**, in a manner which is consistent with the maintenance of competition and other national needs”*

Outer Continental Shelf Lands Act (OCSLA)

Sec 3(3)

Energy Policy Act 2005 – Secretarial authority for offshore renewable energy

- Regulate the production, transportation, or transmission of energy from sources other than oil and gas
- Coordinate with federal, state, and local agencies, tribal governments & stakeholders

Overview



Response to the South Carolina Call for Information and Nominations



North Atlantic Right Whale Critical Habitat Expansion



Commonalities

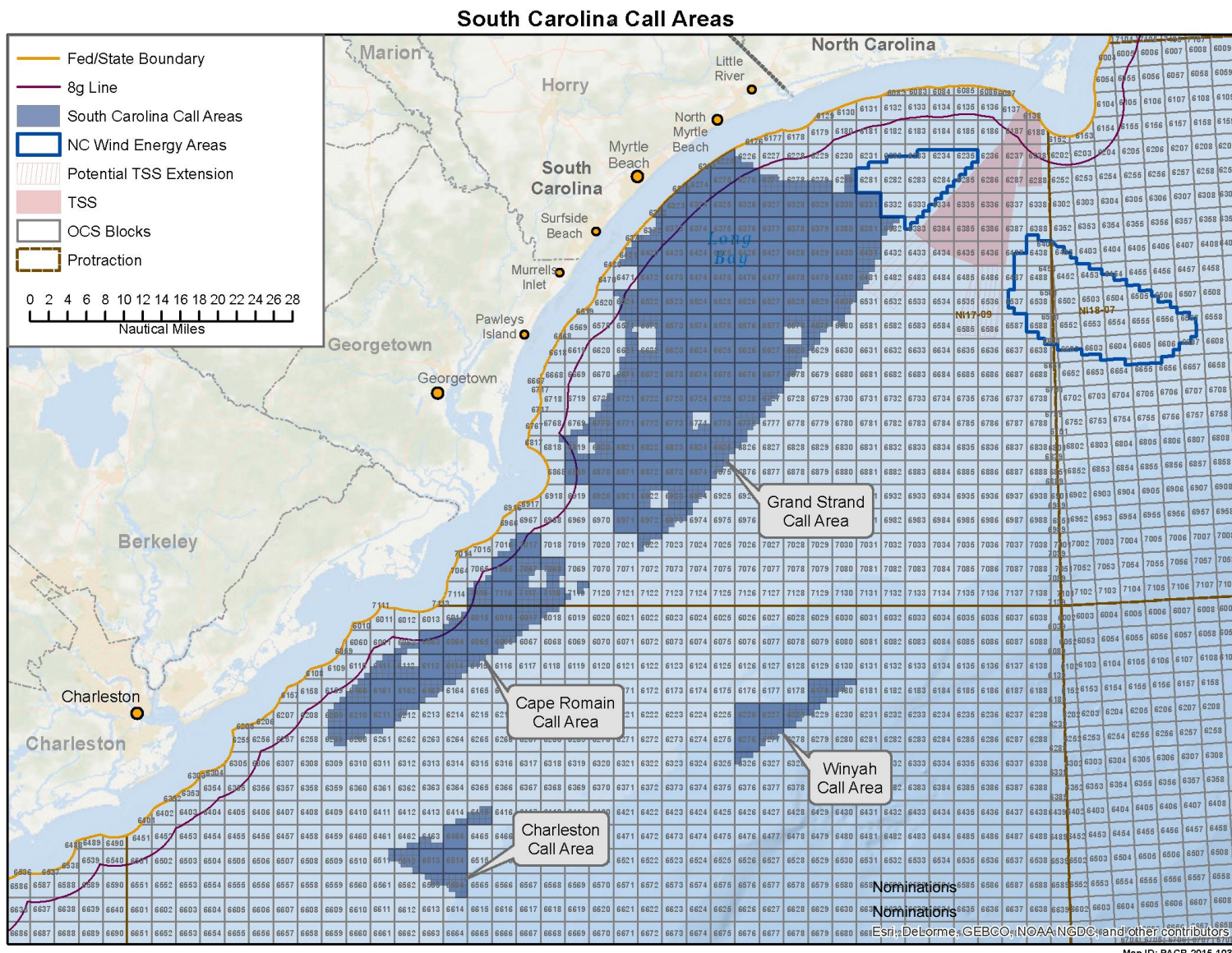


Wilmington East and West Wind Energy Areas



Path Forward

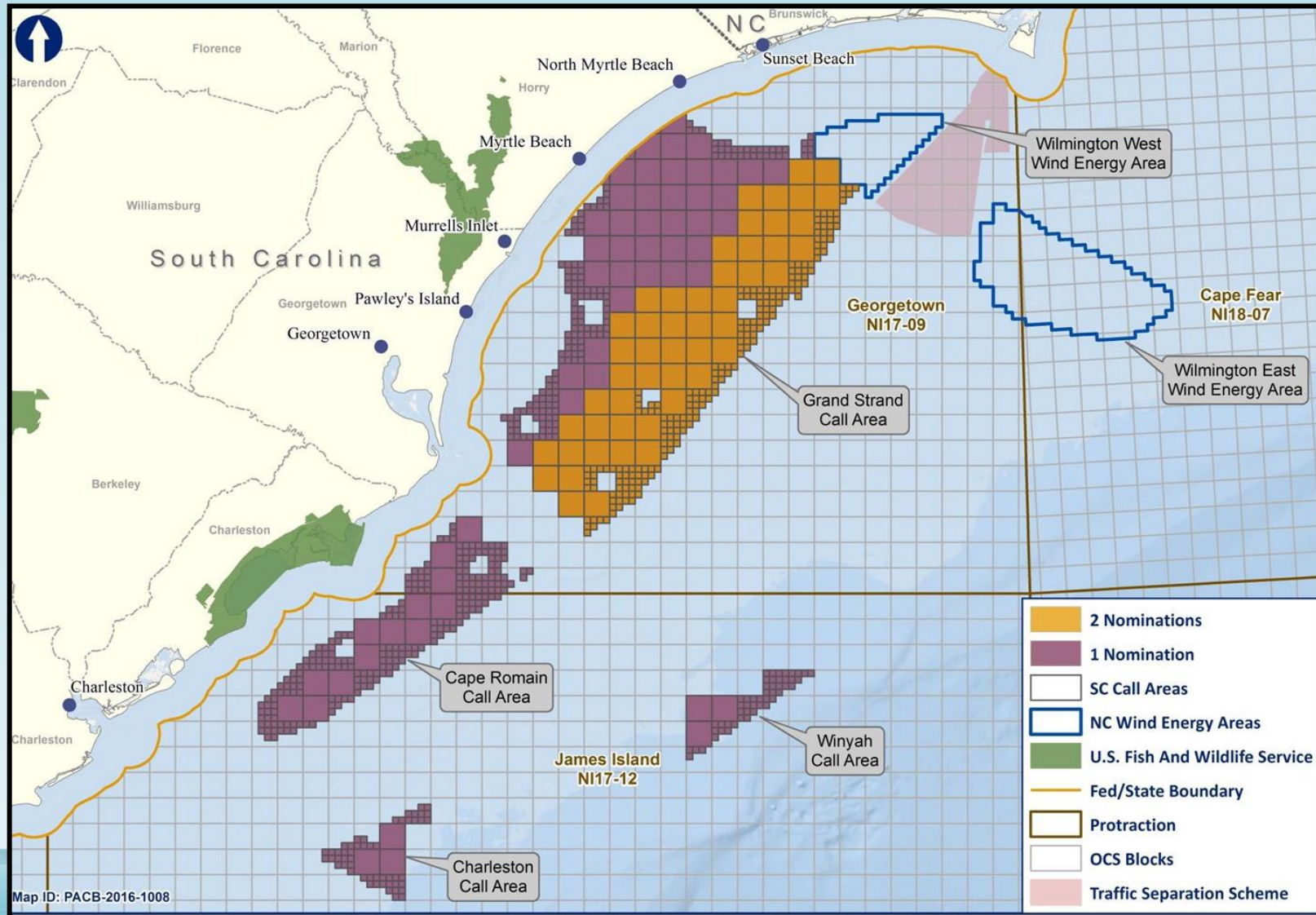
South Carolina Call Areas For Information & Nominations



Parameter	
Total # OCS Blocks	150
• Grand Strand	110
Total # of Acres	853,956
• Grand Strand	628,003
Distance to Shore (Statue Miles)	3
Average Water Depth (m)	5-42
• Grand Strand	8-24

Call for Information and Nominations published November 2015

Nominations Received in Response to South Carolina Call



Qualifications schedule for commercial nominations of interest

Publish Call for Information and Nominations and Notice of Intent to Prepare an Environmental Assessment (Comment Period Closed January 25, 2016)

We are here



Determine interest (If BOEM determines no competitive interests in certain areas; seek acquisitions fees and publish a FR notice)

Stage 2: Leasing

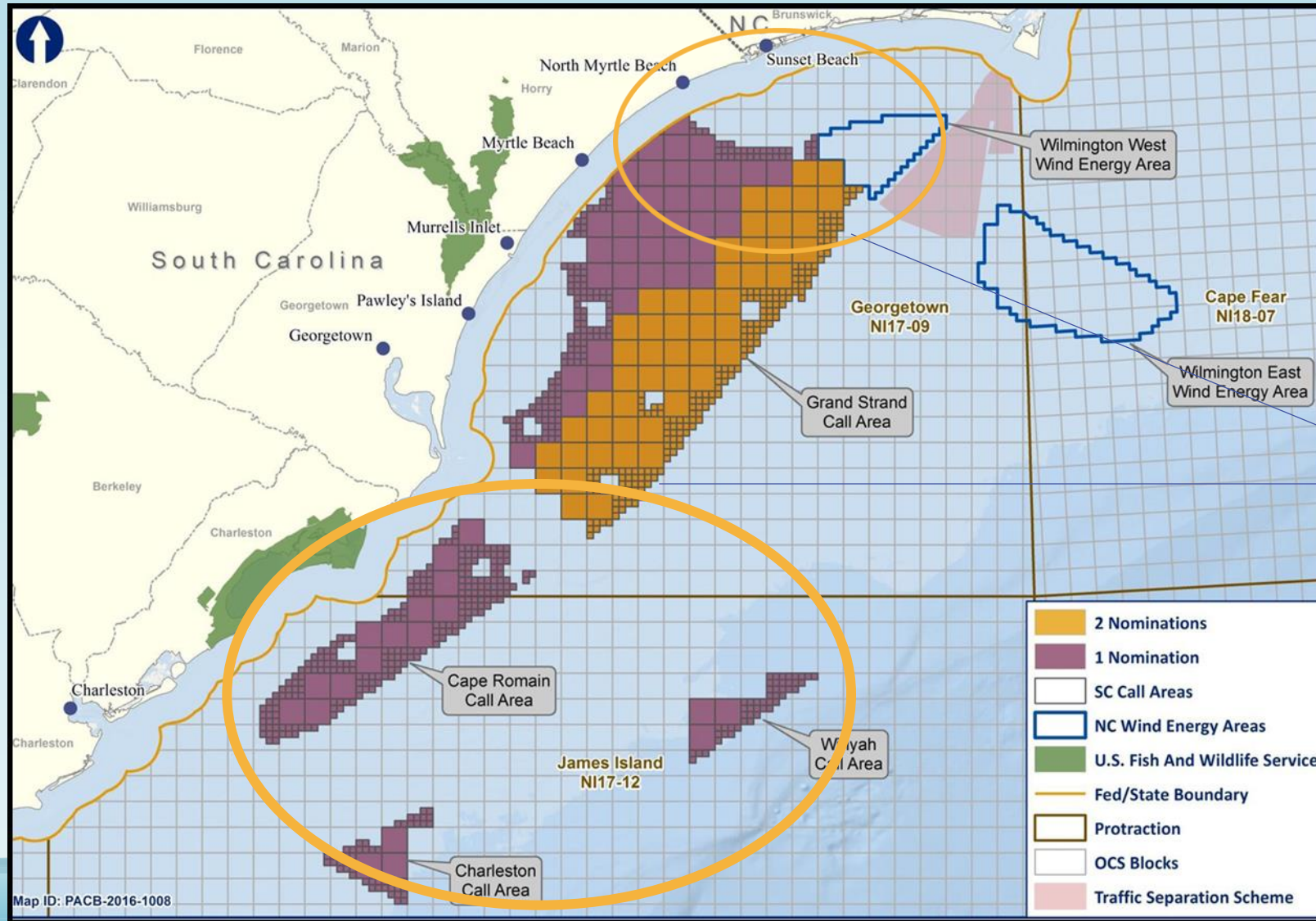
- Proposed Sale Notice
- Comment Period
- Final Sale Notice
- Mock Auction
- Auction



Review nominations qualifications and comments

Conduct Environmental Compliance Reviews

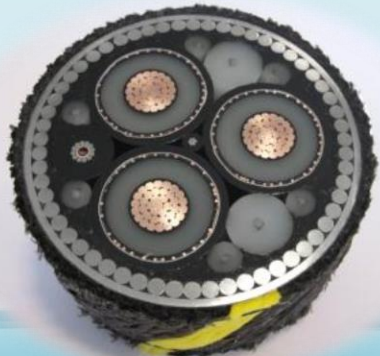
Comments Received in Response to South Carolina Call



☐ Geographic Focus

Comments Received in Response to South Carolina Call

- Comments are all available for review on [regulations.gov](https://www.regulations.gov)
- Request for total removal of Areas (Charleston, Cape Romain, Winyah)
- Concerns related to siting transmission
- Consider avian impacts
- Consider impacts to wetlands
- Sea Turtles
- Visual simulations
- Historic Properties



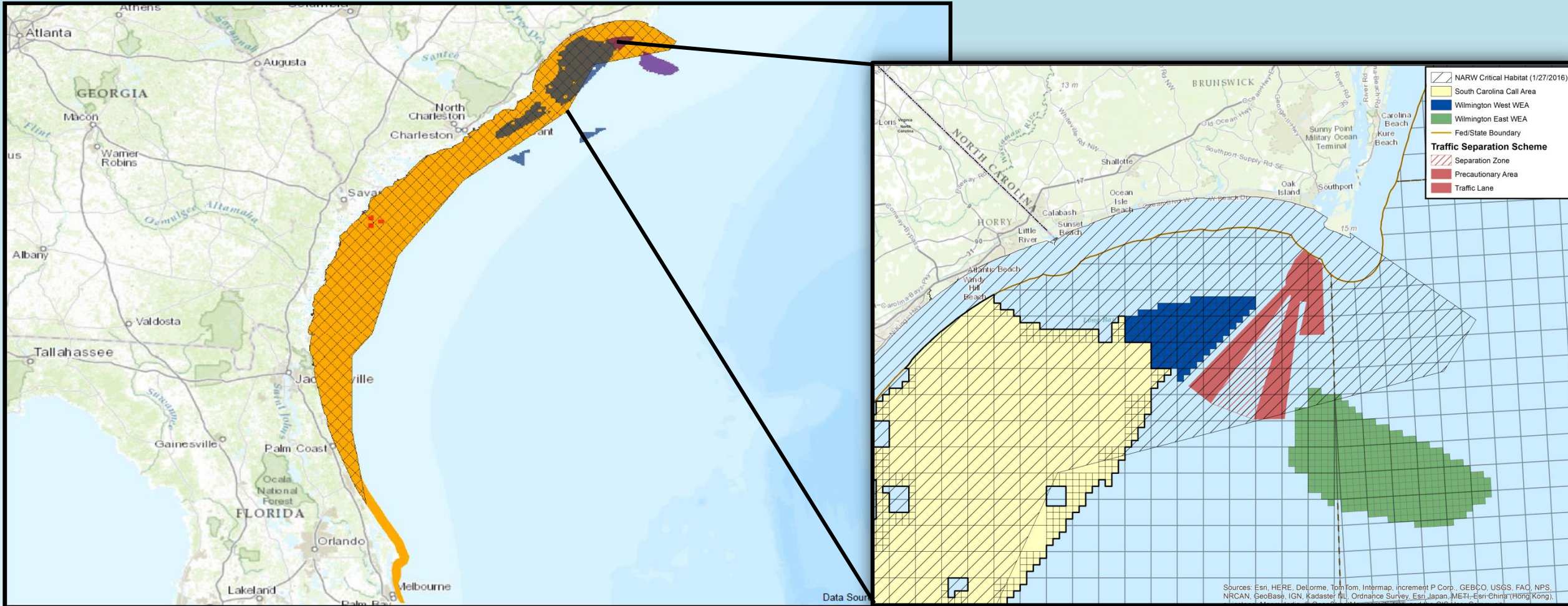
Images © ICPC and SCDNR

Comments Received in Response to NOI

- EA Scoping Meetings held on January 5, 2016 in Charleston; January 6, 2016 in Murrells Inlet; and January 7, 2016 in North Myrtle Beach.
- 42 total comments received on Call and NOI
- Comments focused on:
 - North Atlantic right whale
 - Standard Operating Conditions (SOCs)
 - Visual Impacts
 - Cultural Resources
 - Recommendations of studies/information
 - Alteration of the Cape Romaine Call Area



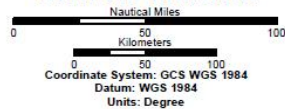
NARW CH Expansion Post Call



U.S. Department of the Interior
Bureau of Ocean Energy Management
Office of Renewable Energy Programs



North Atlantic Right Whale Critical Habitat



- SC Call Area
- Georgia Proposed IP Lease
- North Carolina WEA
- North Atlantic Right Whale Draft Proposed Critical Habitat
- North Atlantic Right Whale Critical Habitat - Final Rule

Sources: Esri, HERE, DeLorme, TomTom, Intermap, increment P Corp., GEBCO, USGS, FAO, NPS, NRCAN, GeoBase, IGN, Kadaster NL, Ordnance Survey, Esri, Japan, MEI, Esri-China (Hong Kong),

Questions?



Casey Reeves
Project Coordinator
casey.reeves@boem.gov

On the Web:
<http://www.boem.gov/South-Carolina>