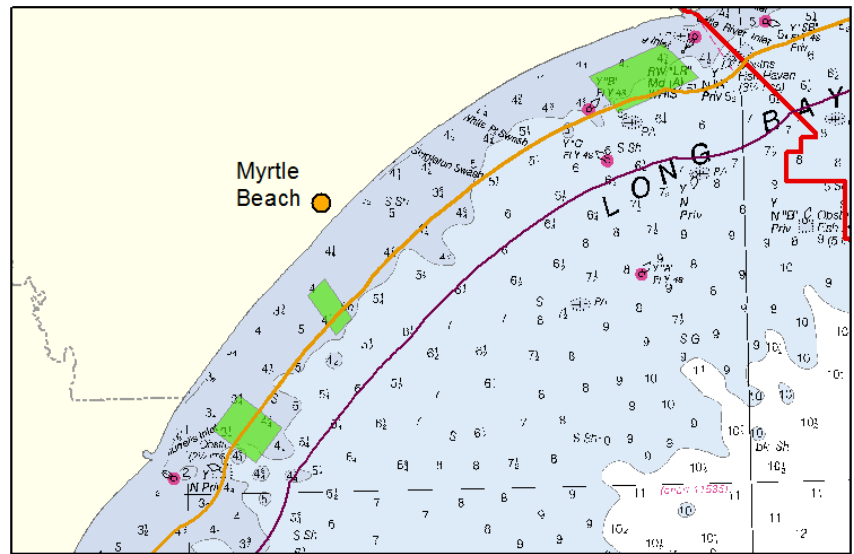
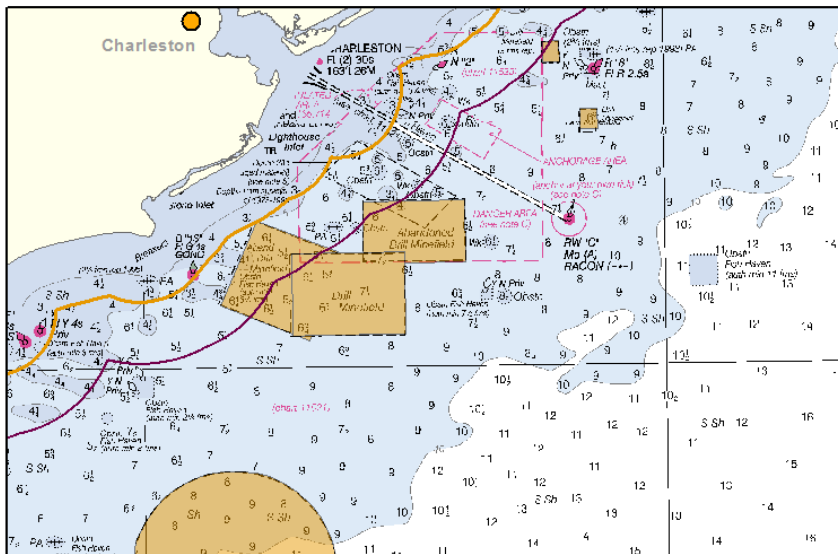
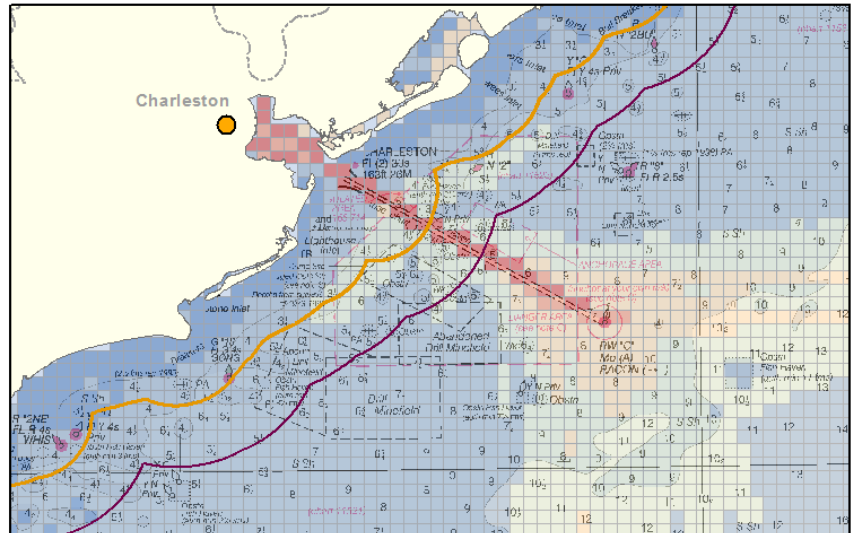
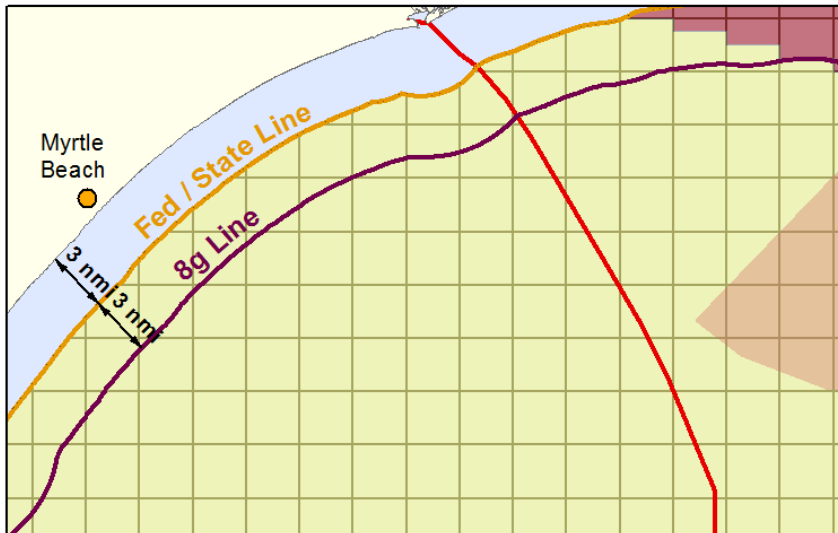
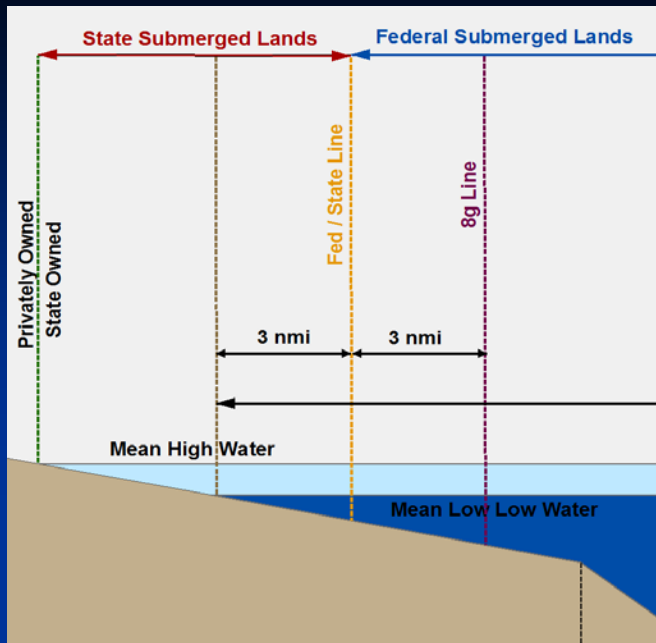




South Carolina Spatial Data for Offshore Renewable Energy Planning

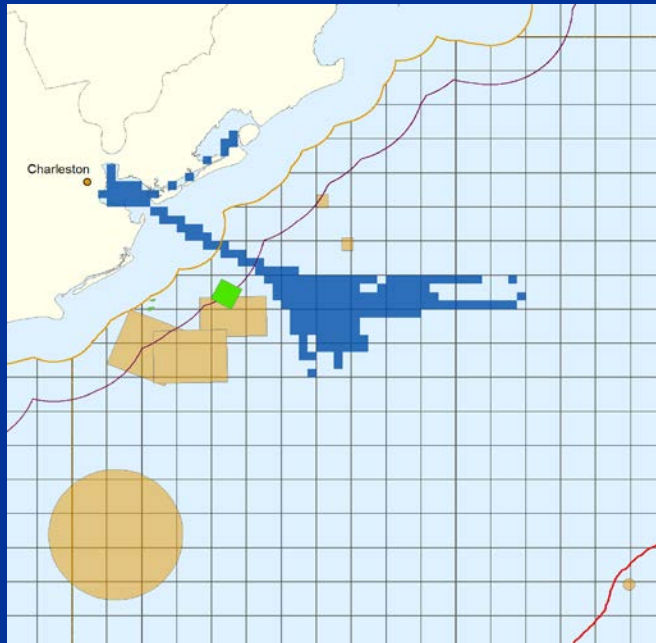


Stephen Creed, Geographer
Bureau of Ocean Energy Management



BOEM Spatial Boundaries

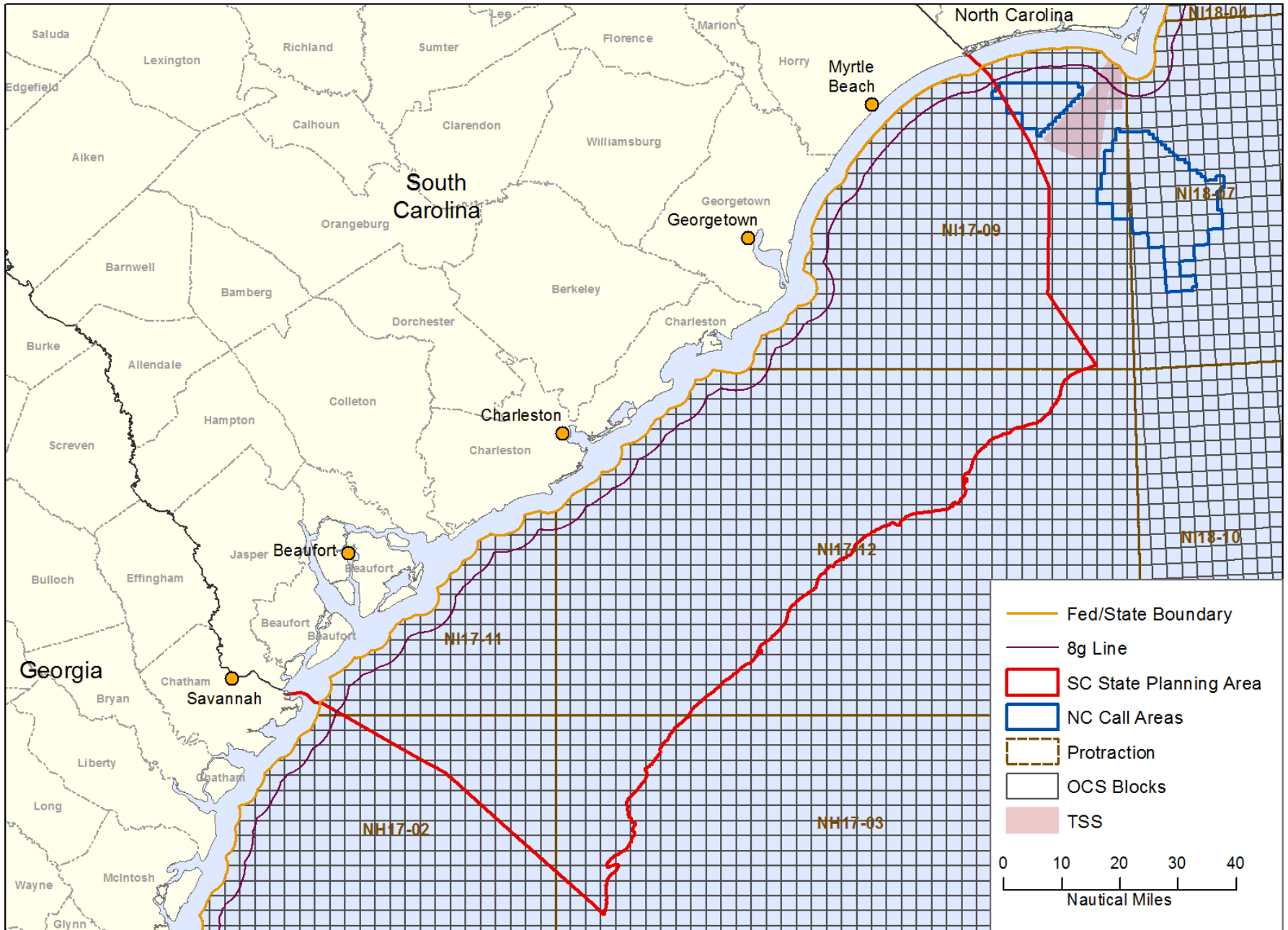
- Authoritative vs Administrative Boundaries
- Expansion of SC Planning Area's Northern Boundary



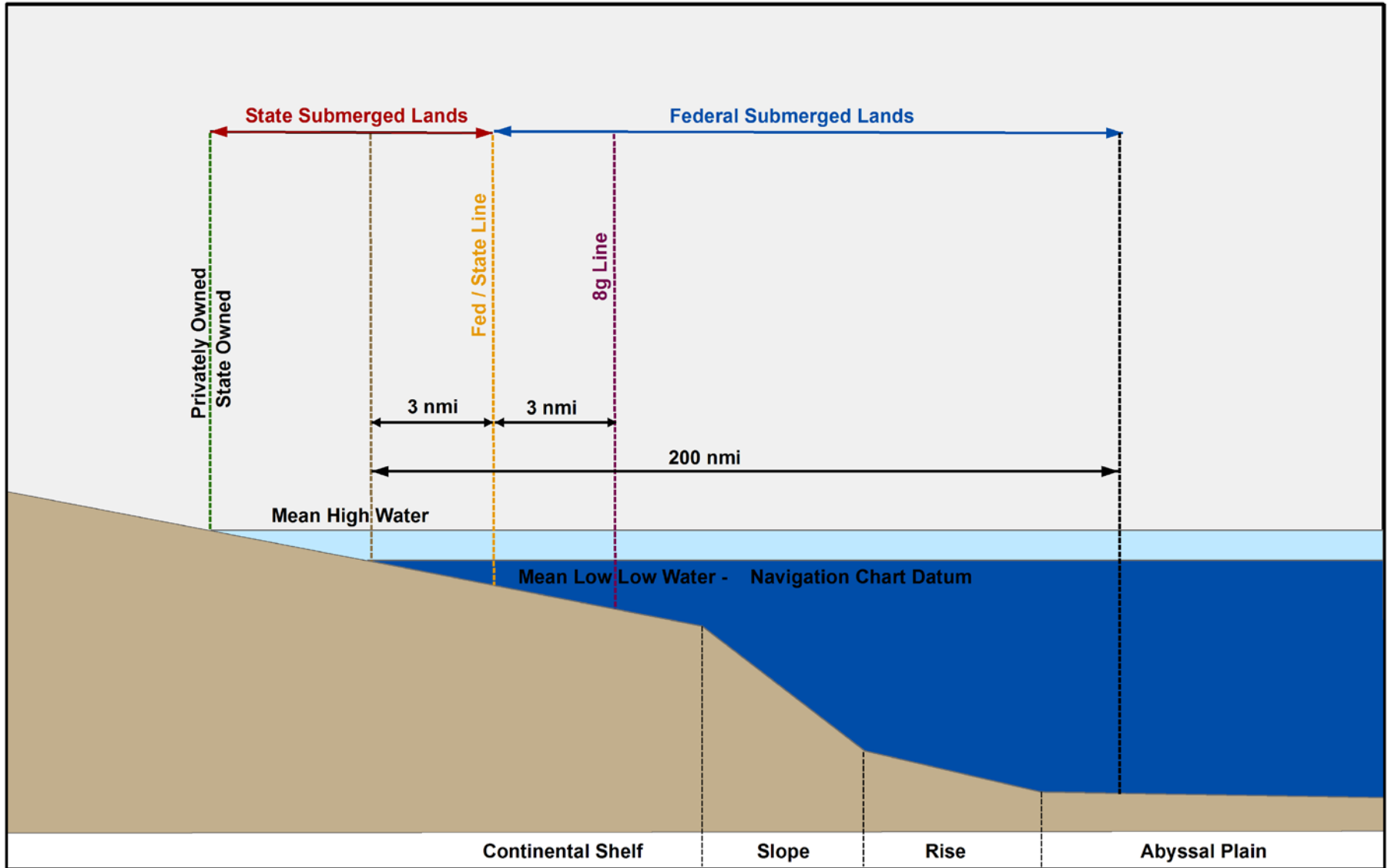
Spatial Planning with GIS for Initial Area Reduction

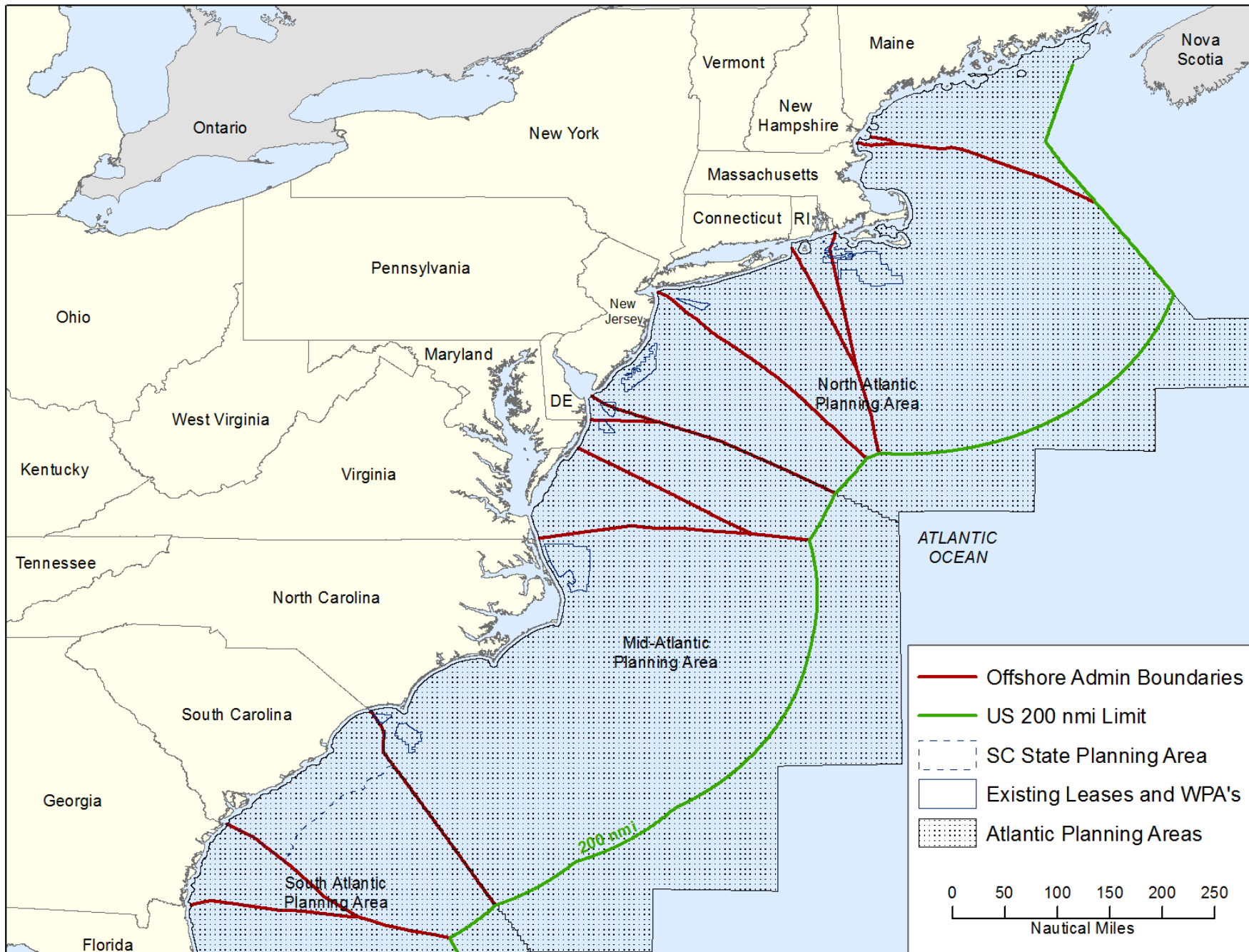
- Identify Marine Activities Conflicting with Offshore Wind
- Initial Reduction of SC Planning Area and ID Areas for Further Study

South Carolina Planning Area

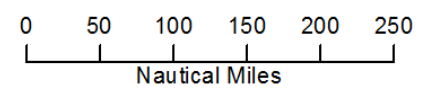


Marine Boundaries Offshore South Carolina - Profile

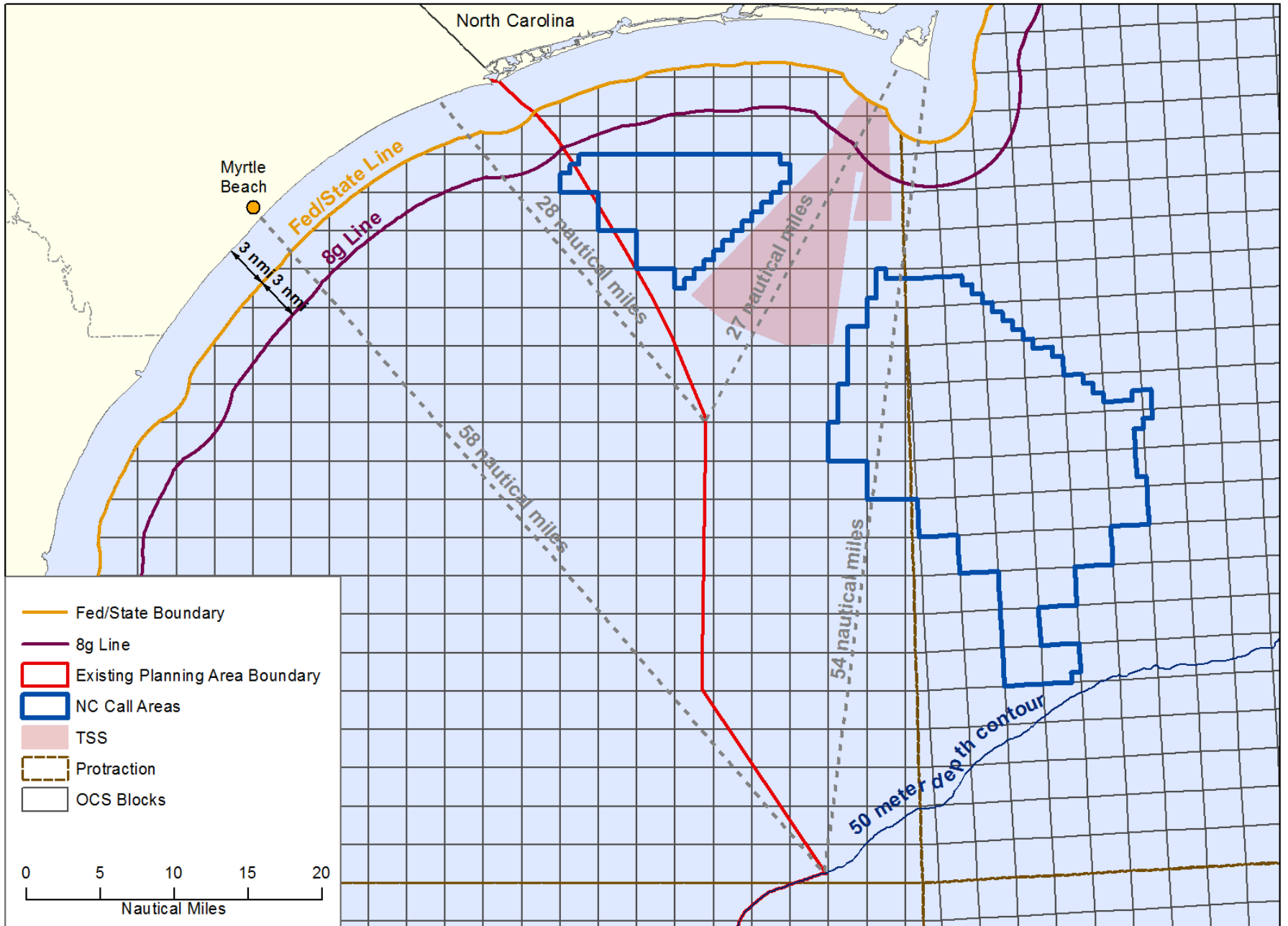




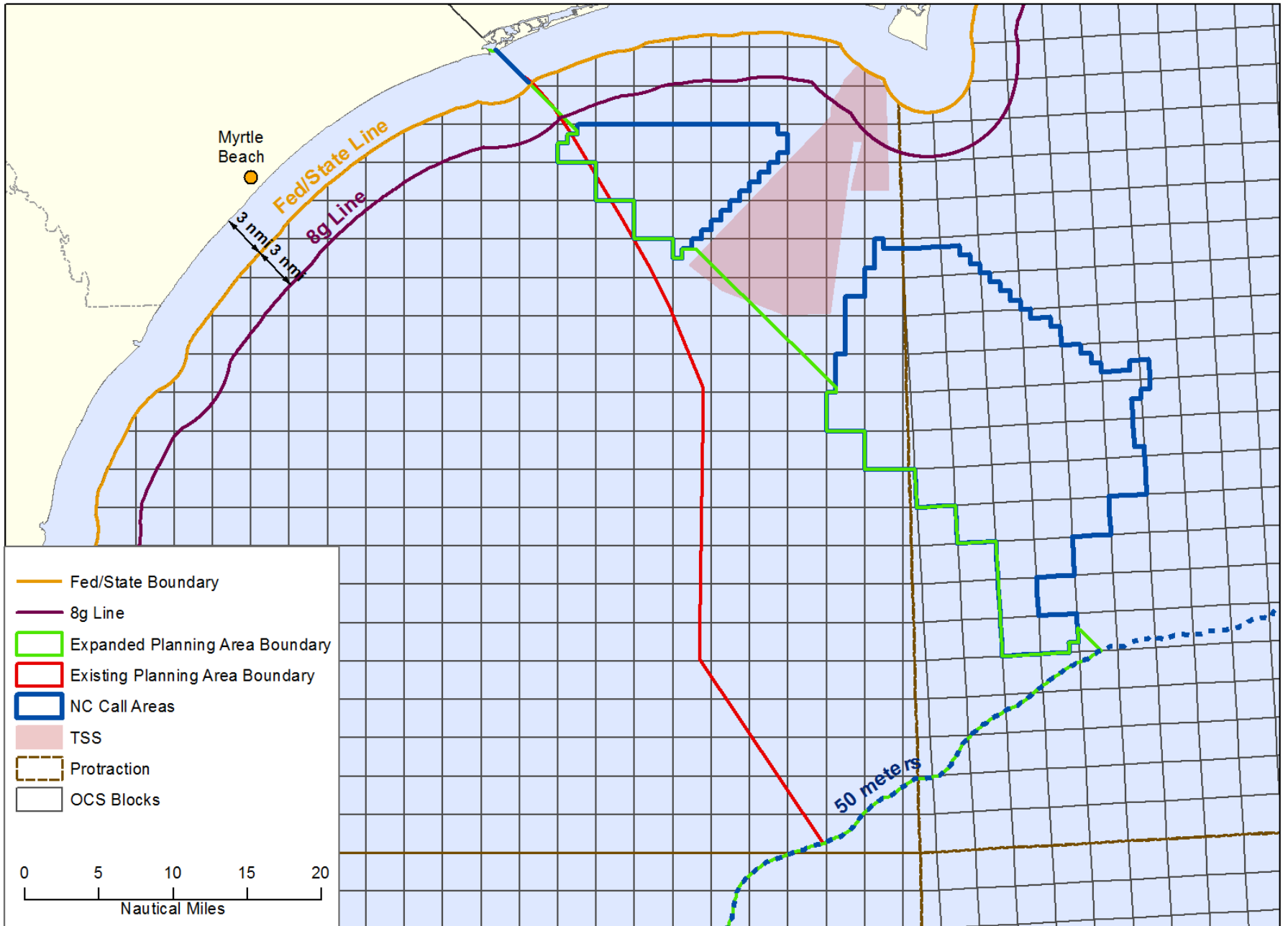
- Offshore Admin Boundaries
- US 200 nmi Limit
- - - SC State Planning Area
- Existing Leases and WPA's
- ⋯ Atlantic Planning Areas



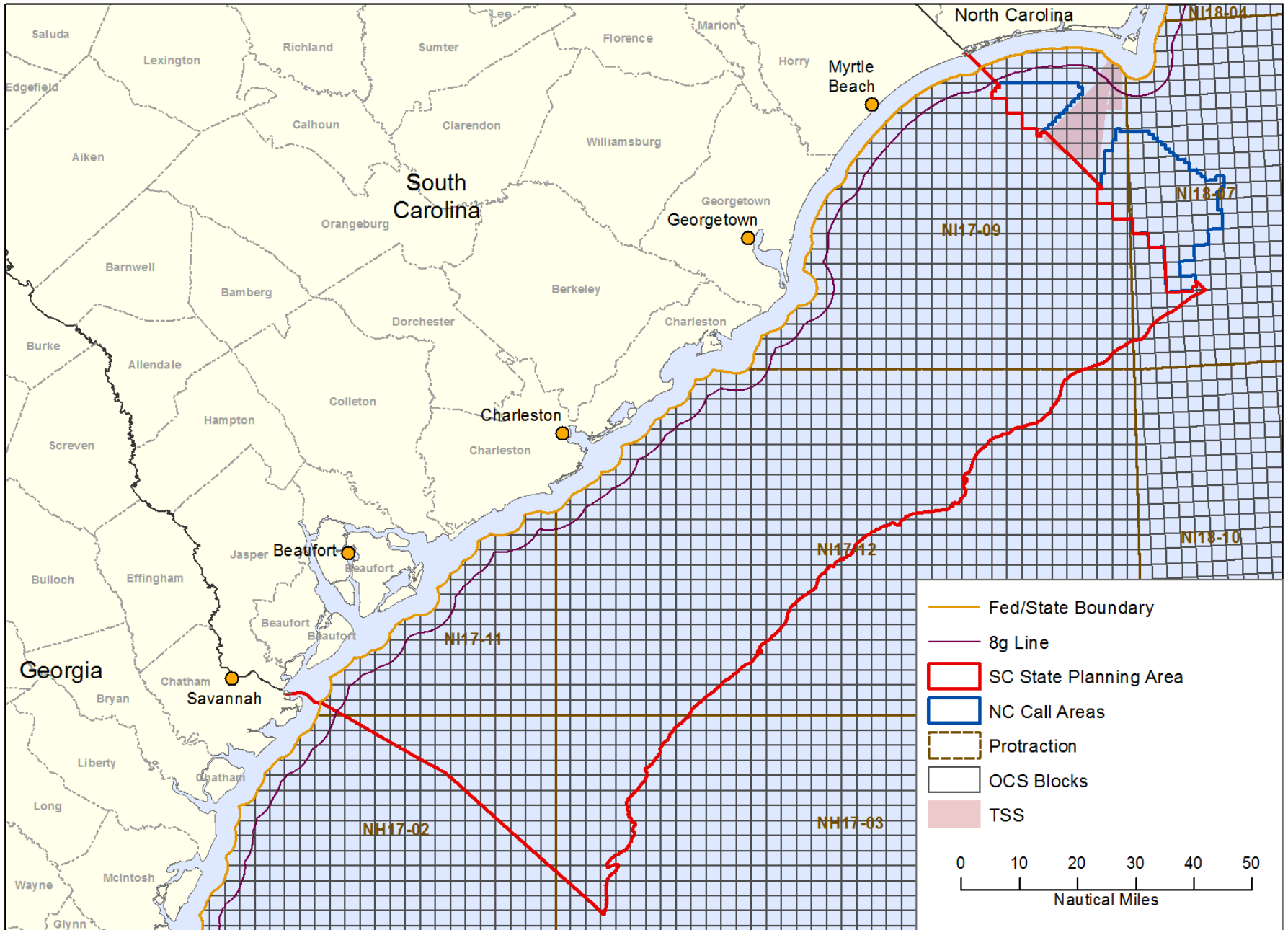
South Carolina Planning Area - Northern Admin Boundary Delineation



South Carolina Planning Area - Northern Extension

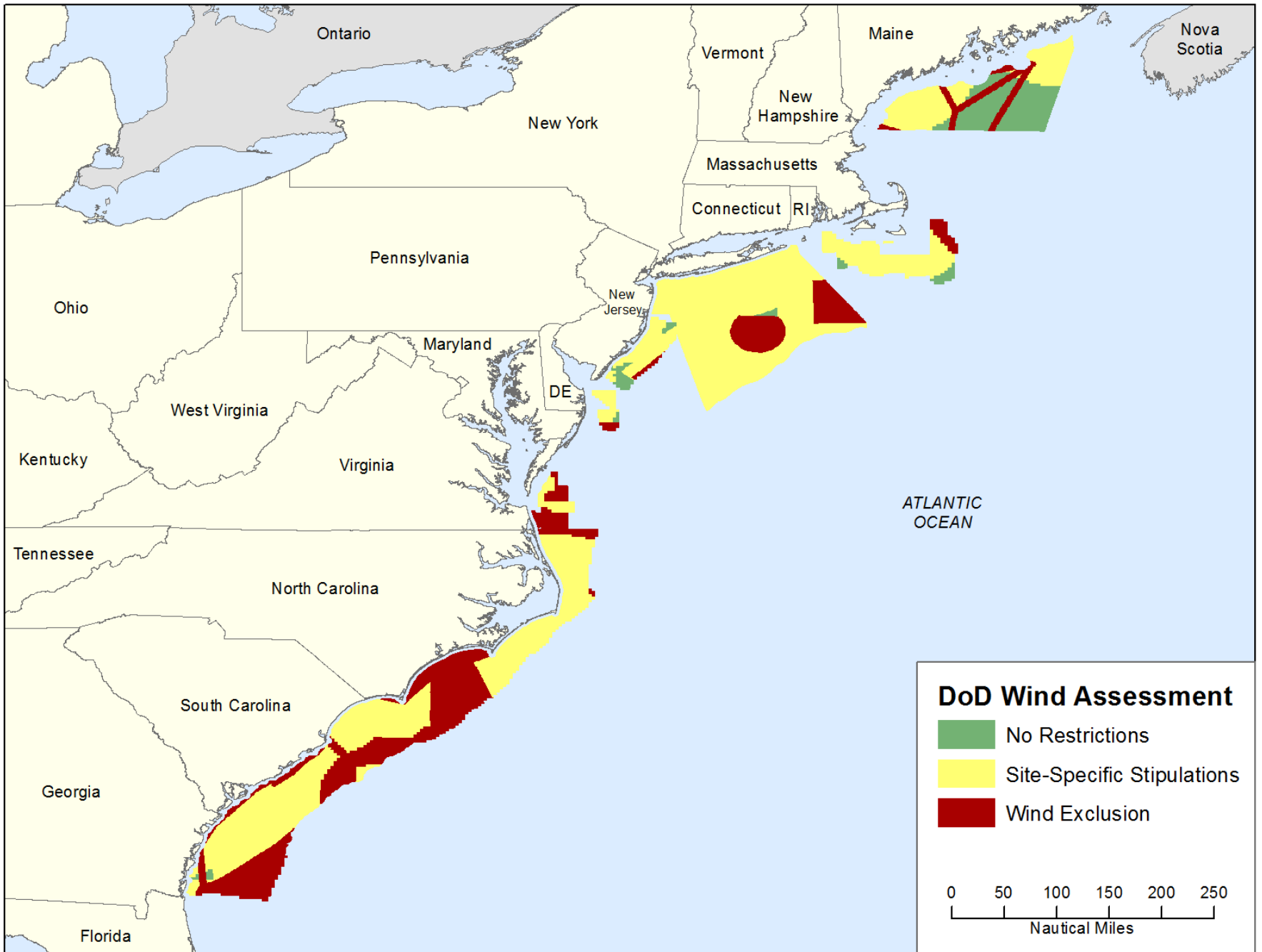


South Carolina Planning Area with Expanded Northern Boundary

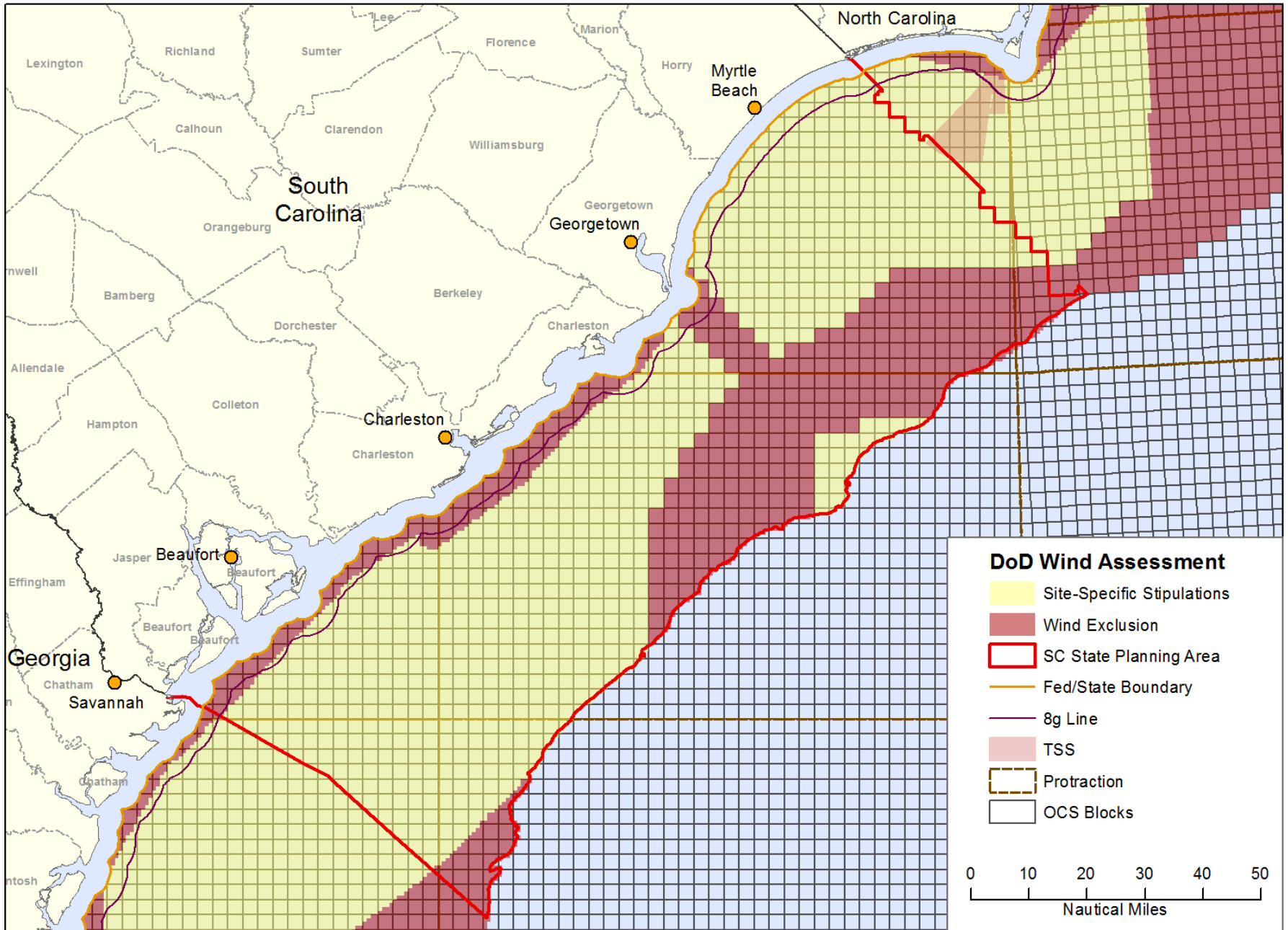


South Carolina Planning Area – Initial Reduction

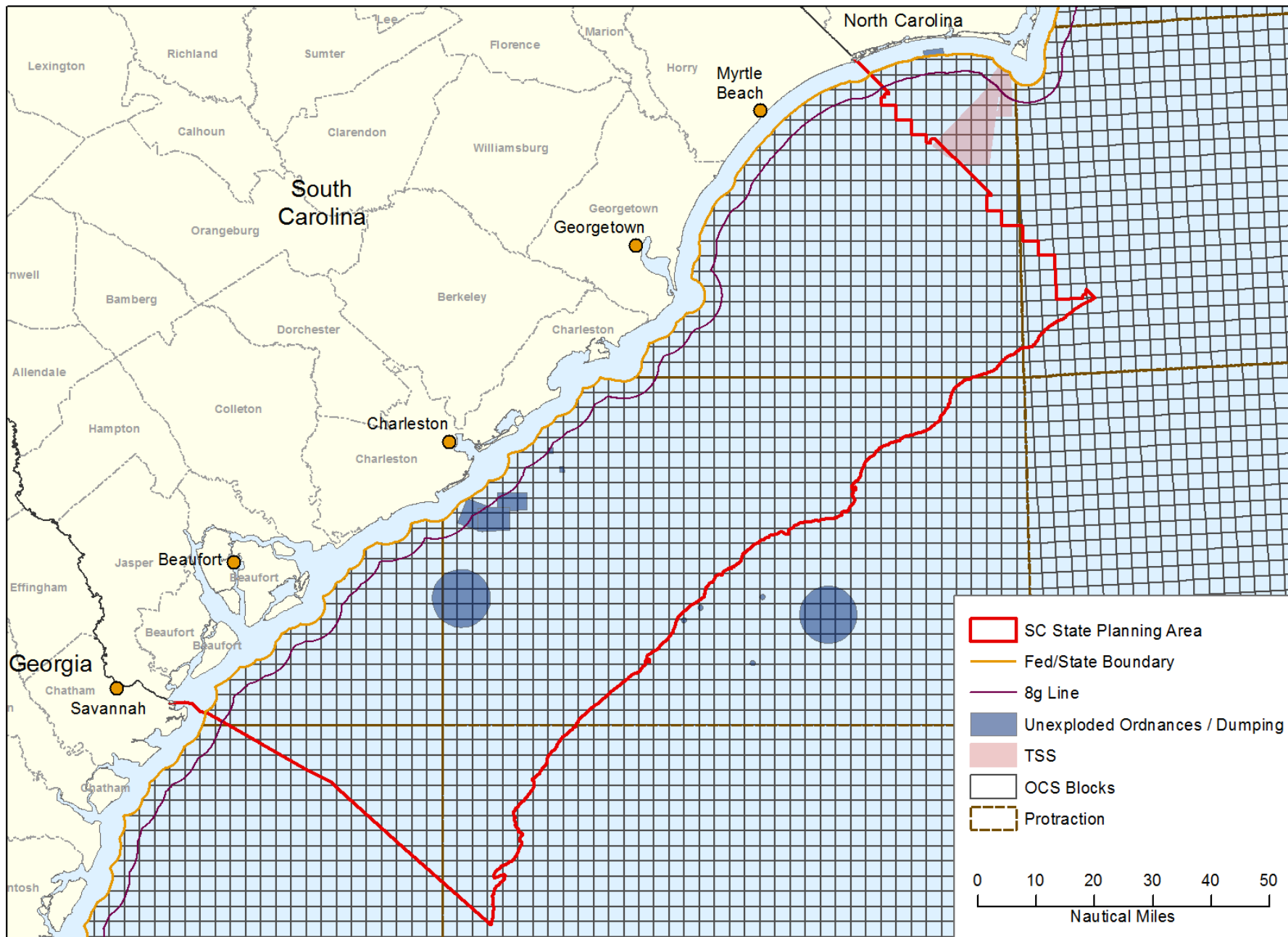
- DoD Wind Assessment
- Dumping Grounds / Unexploded Ordinance
- AIS Vessel Traffic – Identify High Volume Areas
- Sand and Gravel Borrow Areas



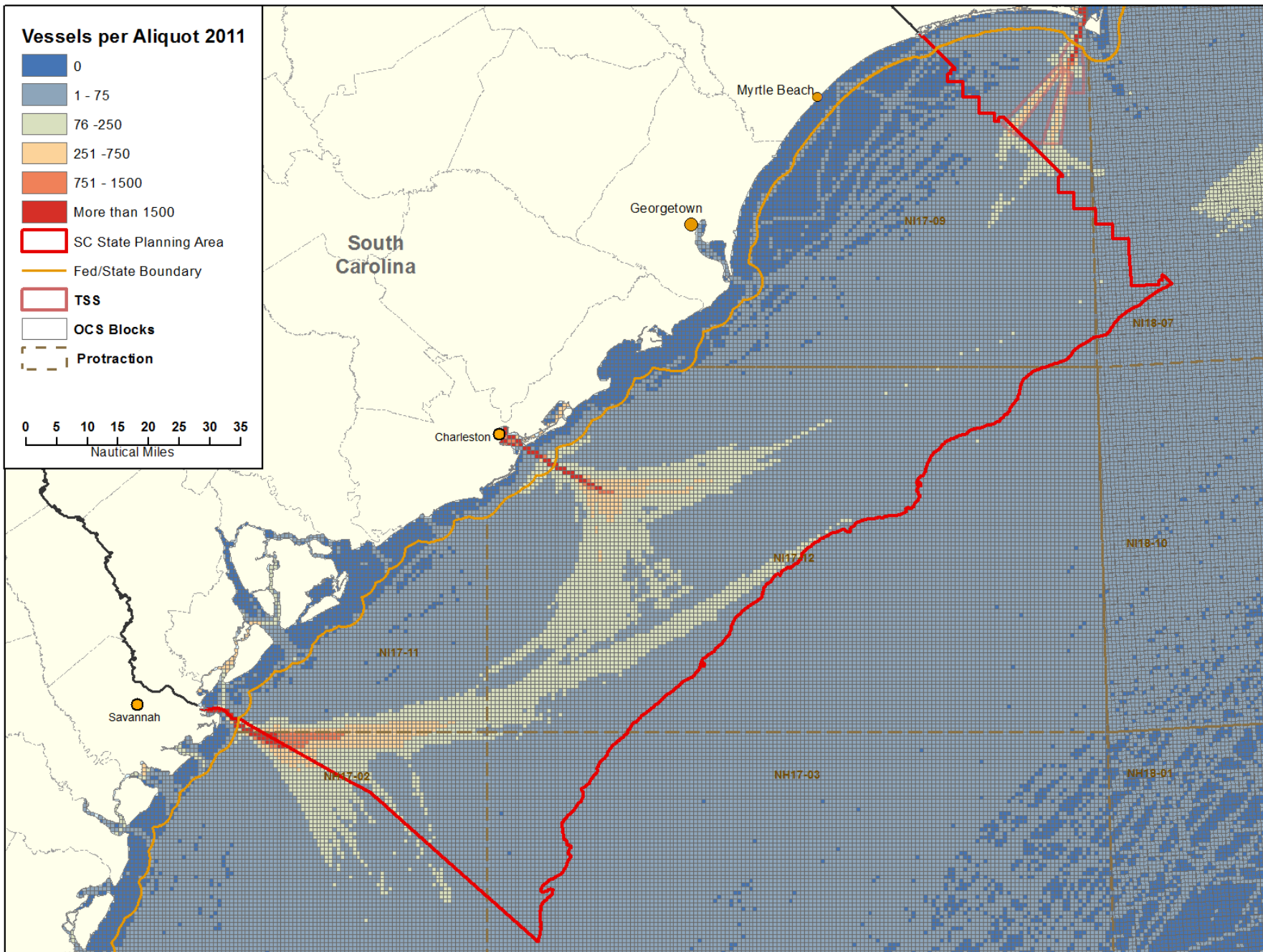
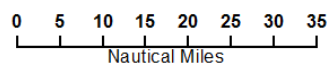
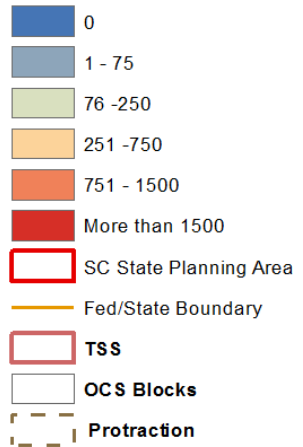
DoD Wind Assessment



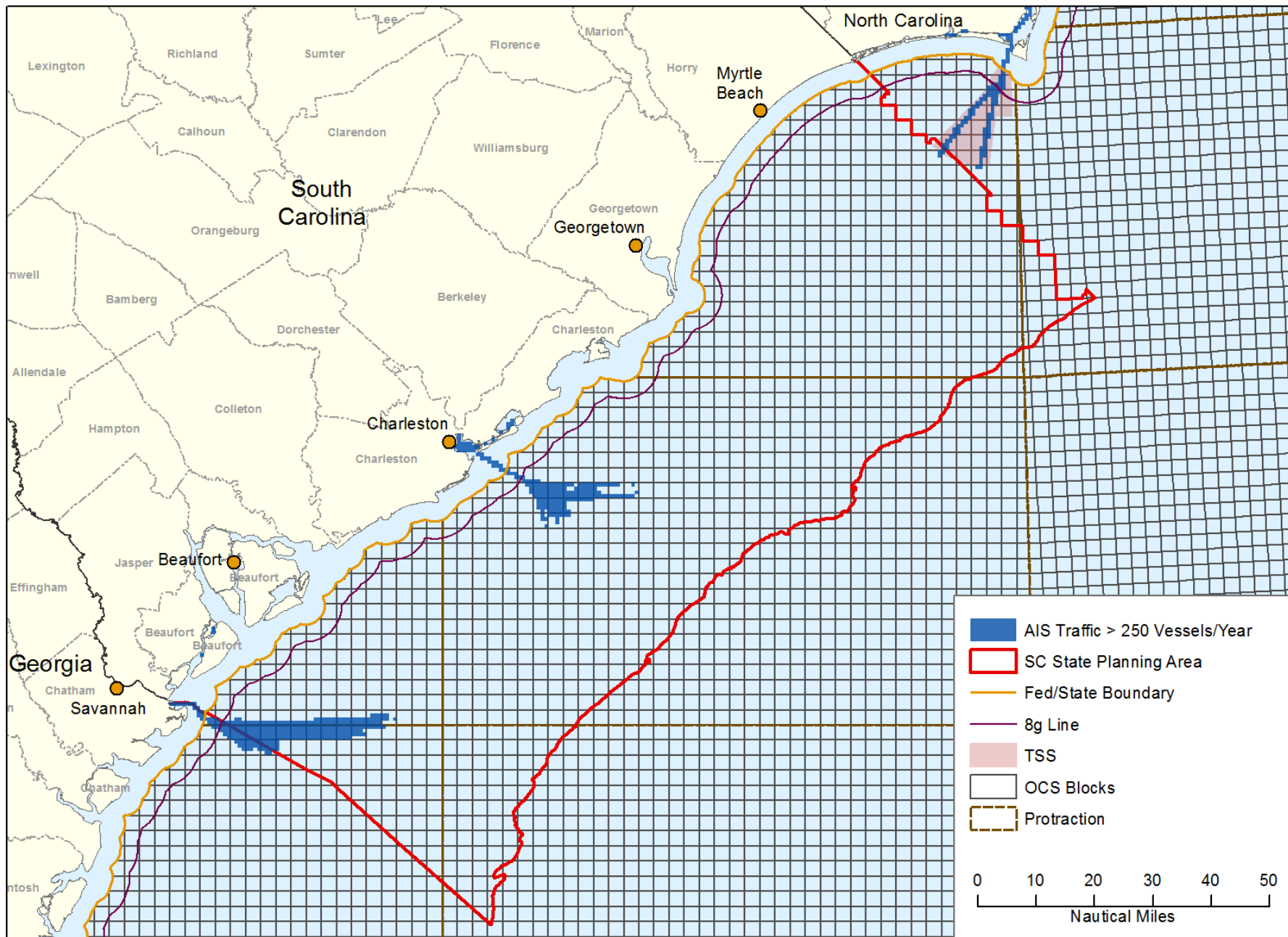
Dumping Ground - Unexploded Ordnance



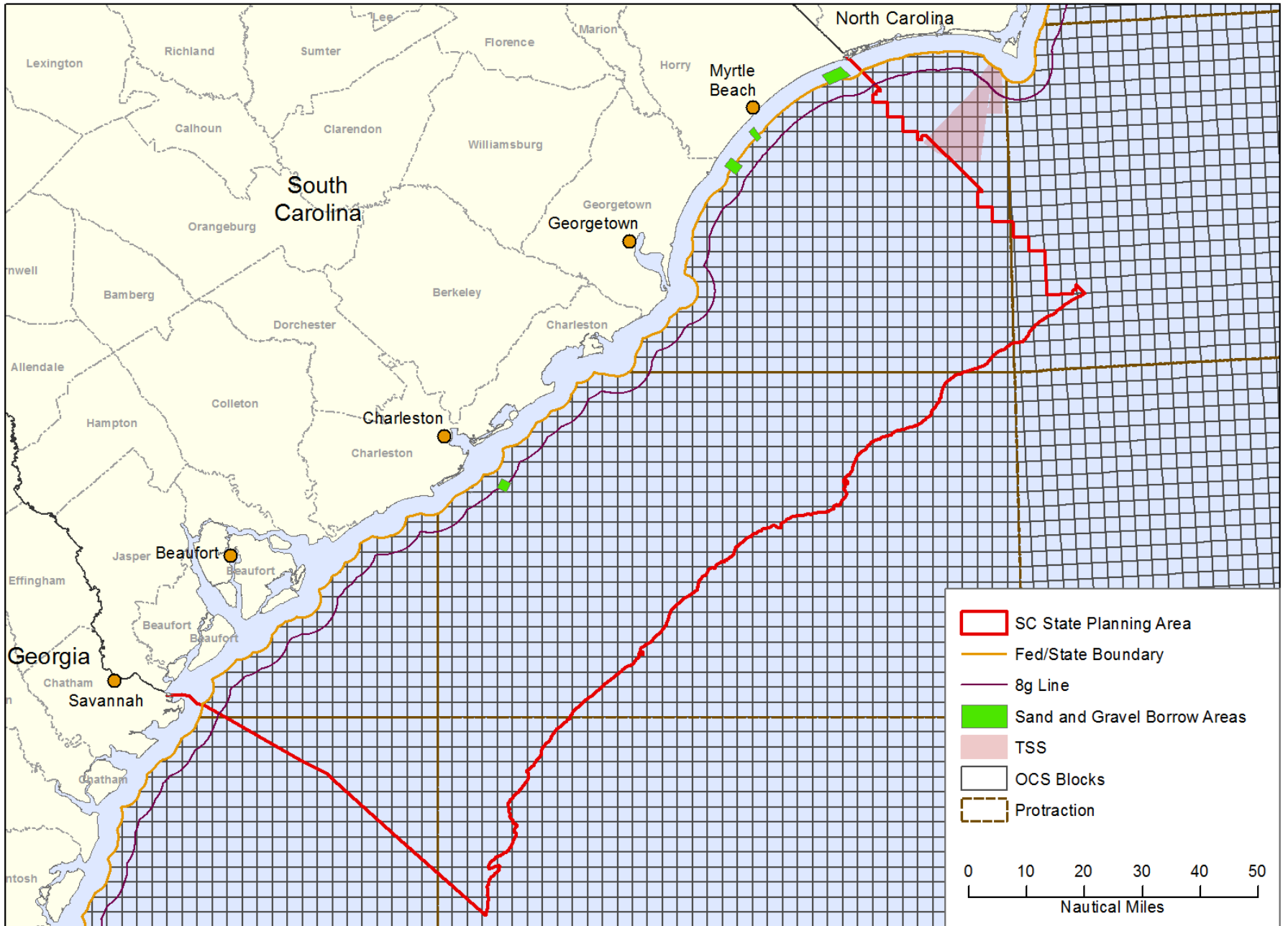
Vessels per Aliquot 2011

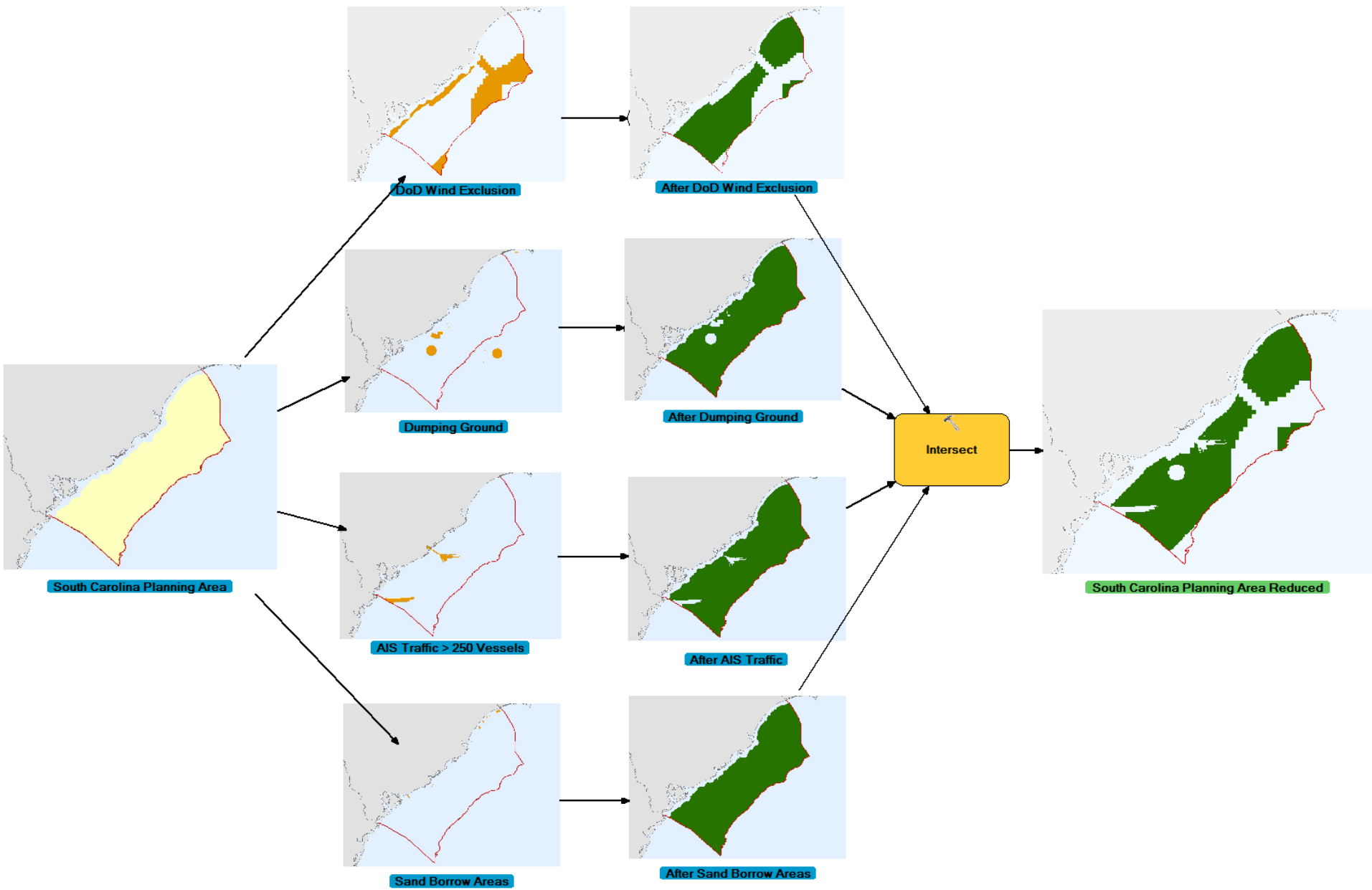


AIS Traffic - More Than 250 Vessels/Year



Sand and Gravel Borrow Areas





South Carolina Planning Area - After Initial Reduction

