

Intergovernmental Renewable Energy Task Force for the NY Bight

| May 9, 2018

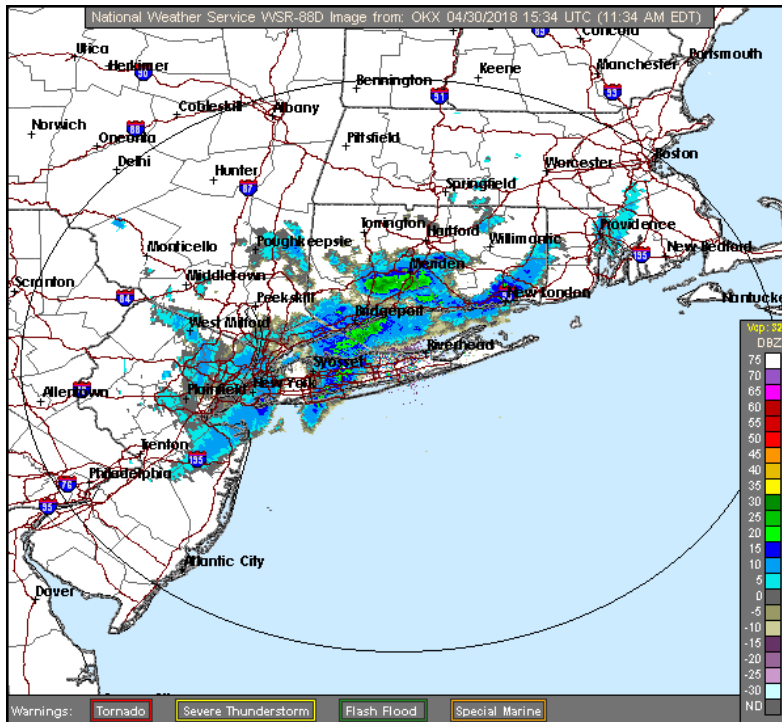
| Newark, New Jersey

# BOEM's Technical & Navigation Analysis

**Arianna Baker**, *Navigation Analyst*

Bureau of Ocean Energy Management | Department of the Interior

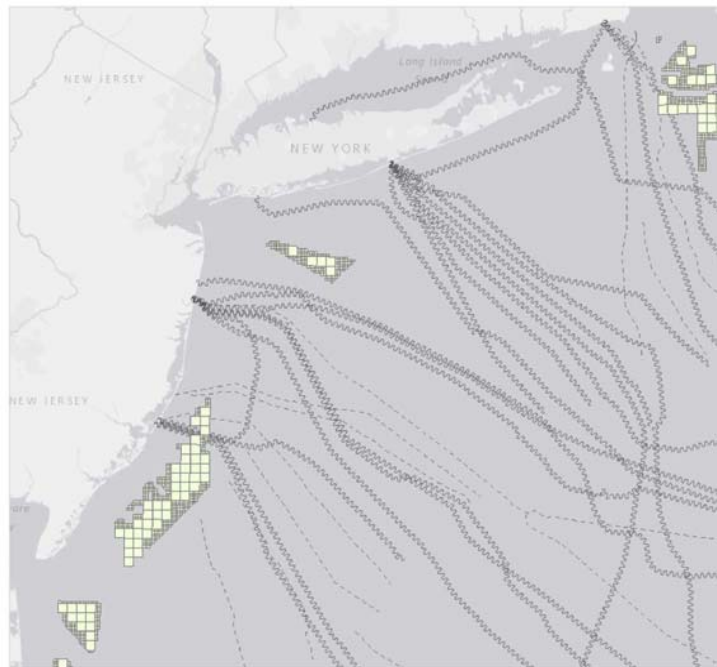
# Technical Analysis: Radars



- **Affected** radar types include:
  - Coastal Air Navigation Radars
  - Weather Radars
  - Vessel Navigation Radars
- Effects can be **mitigated by**:
  - Modifying wind installation layout
  - Stealth treatment on main turbine elements
  - Changing how radar's data is processed
  - Adaptive scanning

# Technical Analysis: Cables

Marine Cadastre National Viewer |



## MAP LEGEND

### NASCA Submarine Cables

In Service (1:36,111 - 1:2,311,162)

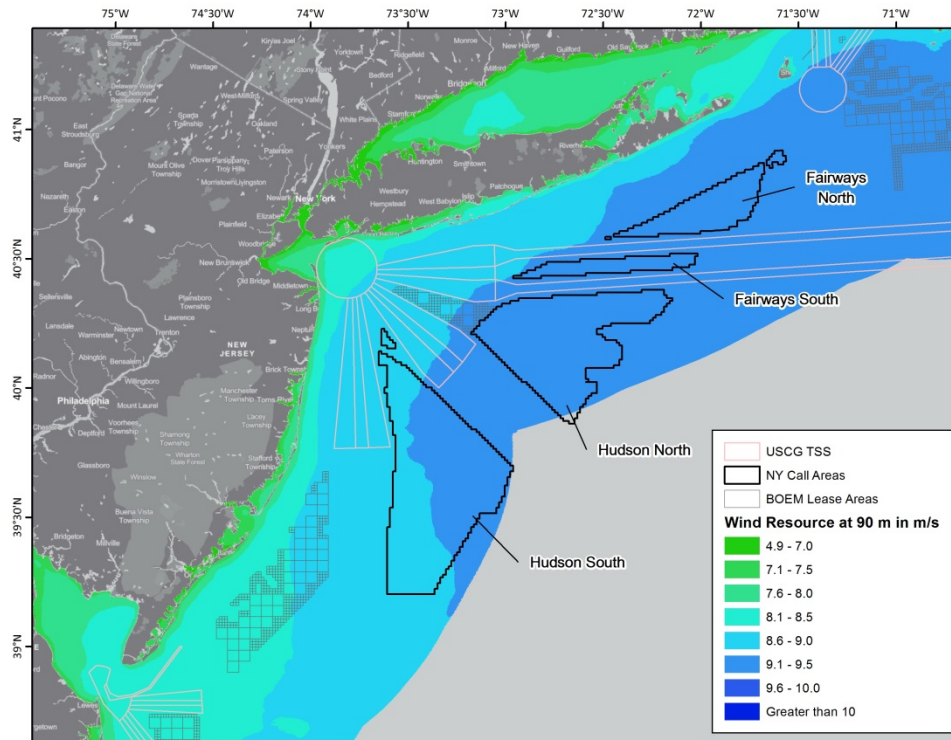
In Service (1:2,311,163 - 1:18,489,298)

Out of Service

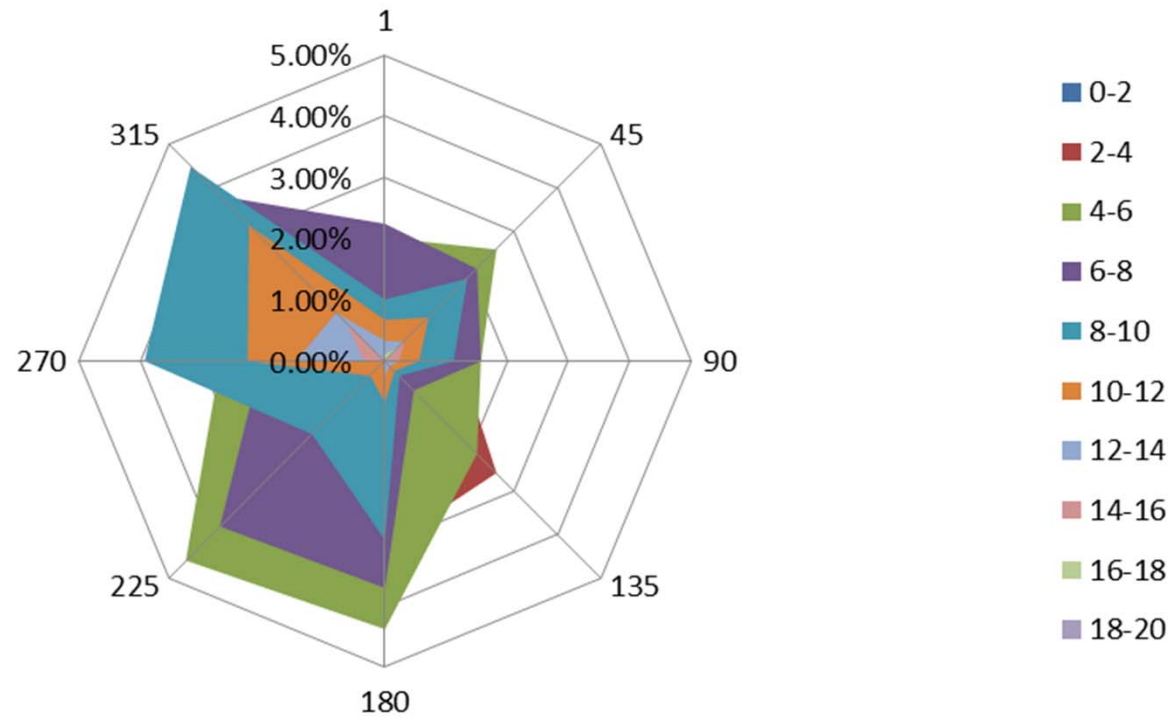
### Active Renewable Energy Leases

Wind Energy Lease

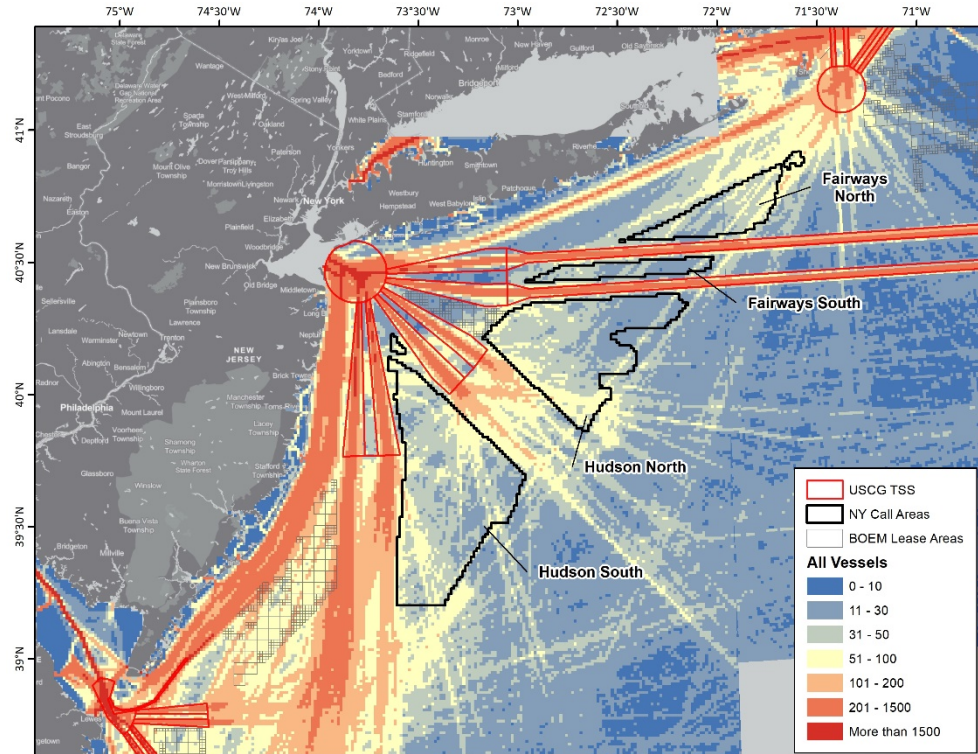
# Technical Analysis: Wind Resource



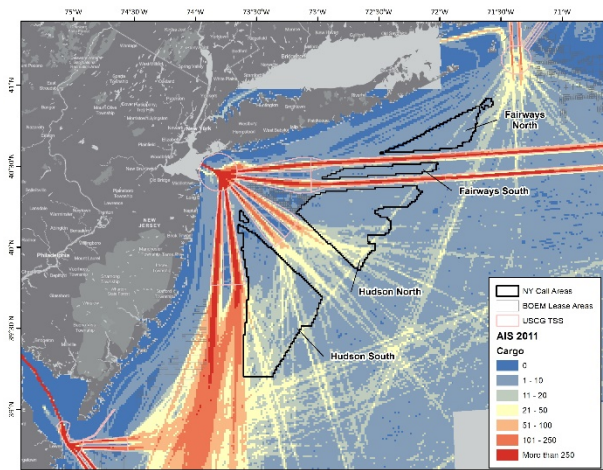
# Technical Analysis: Wind Resource



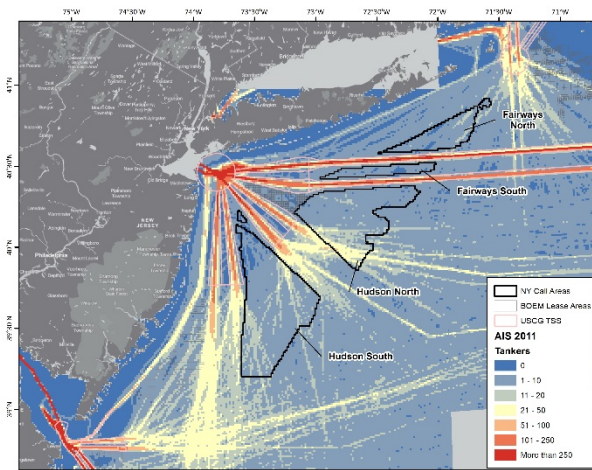
# Navigation Analysis: All Vessel Traffic



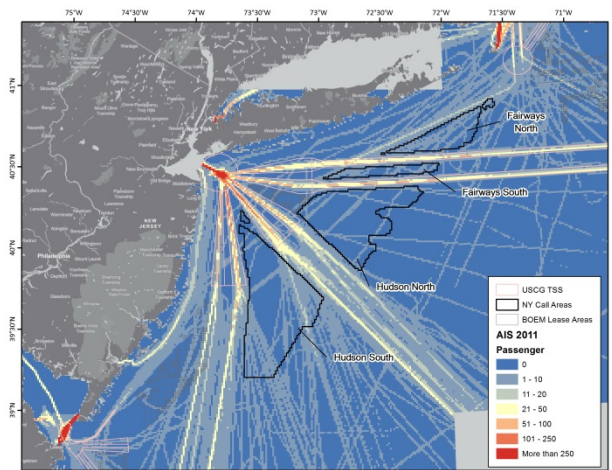
# Navigation Analysis: Deep-Draft Traffic



2011 Cargo Traffic

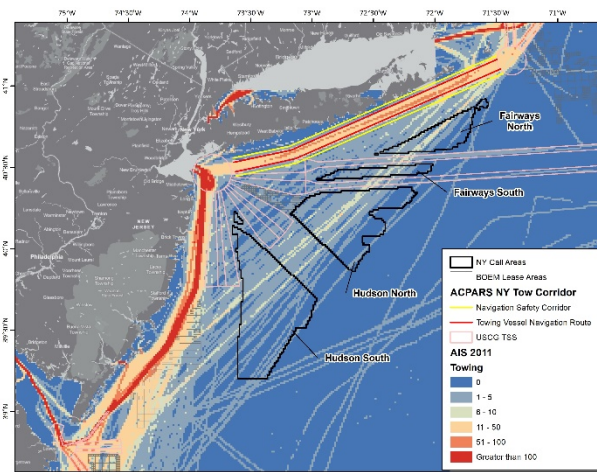


2011 Tanker Traffic

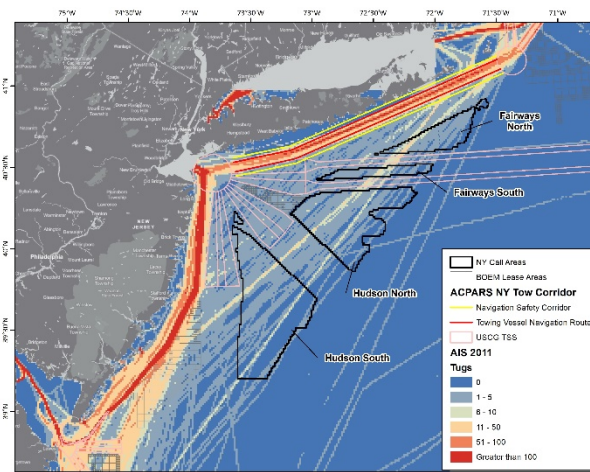


2011 Passenger Traffic

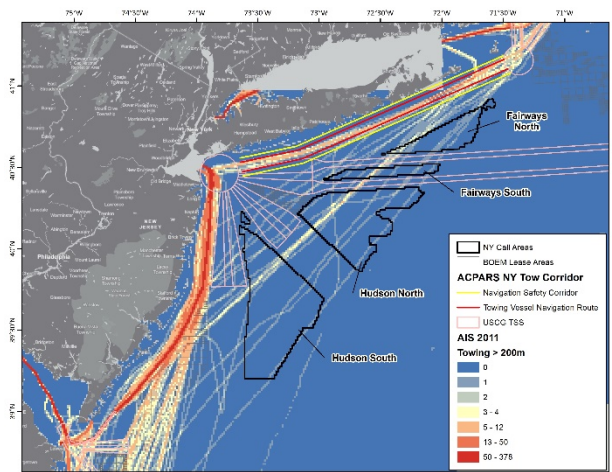
# Navigation Analysis: Tug and Towing



**2011 Towing Traffic**



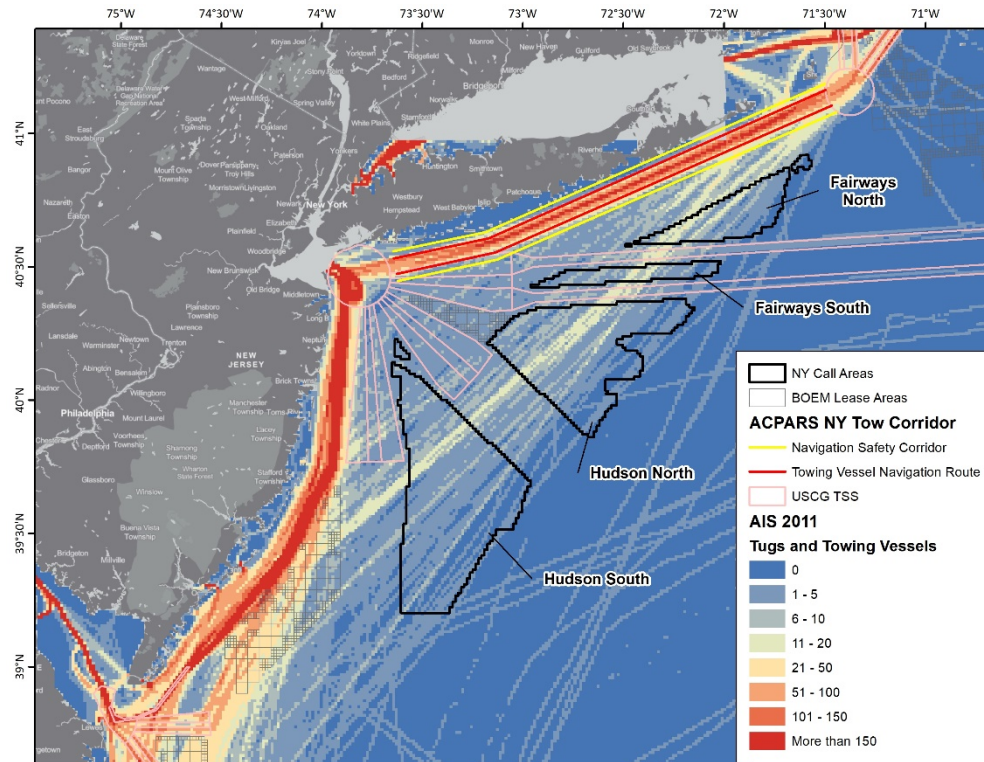
**2011 Tug Traffic**



**2011 Large Towing Traffic**



# Navigation Analysis: Tug and Towing



Questions?

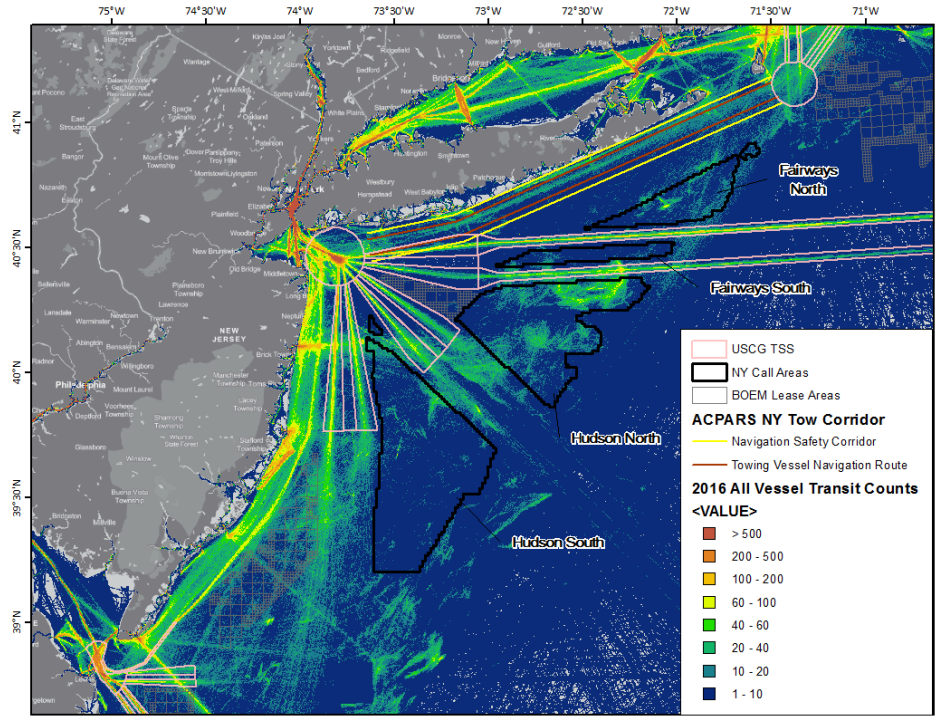
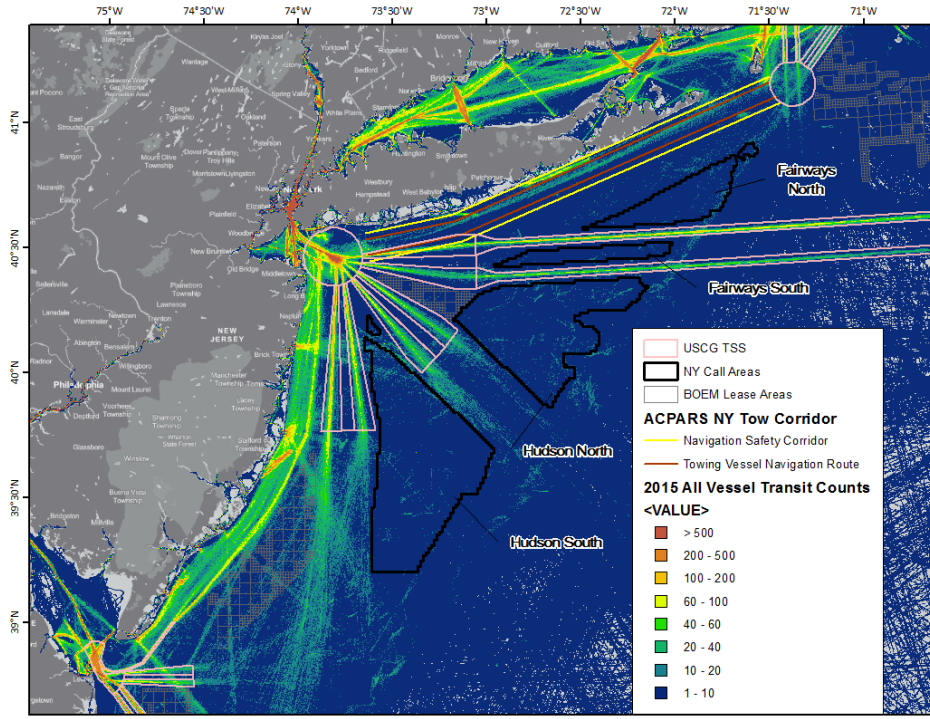


**Arianna Baker**

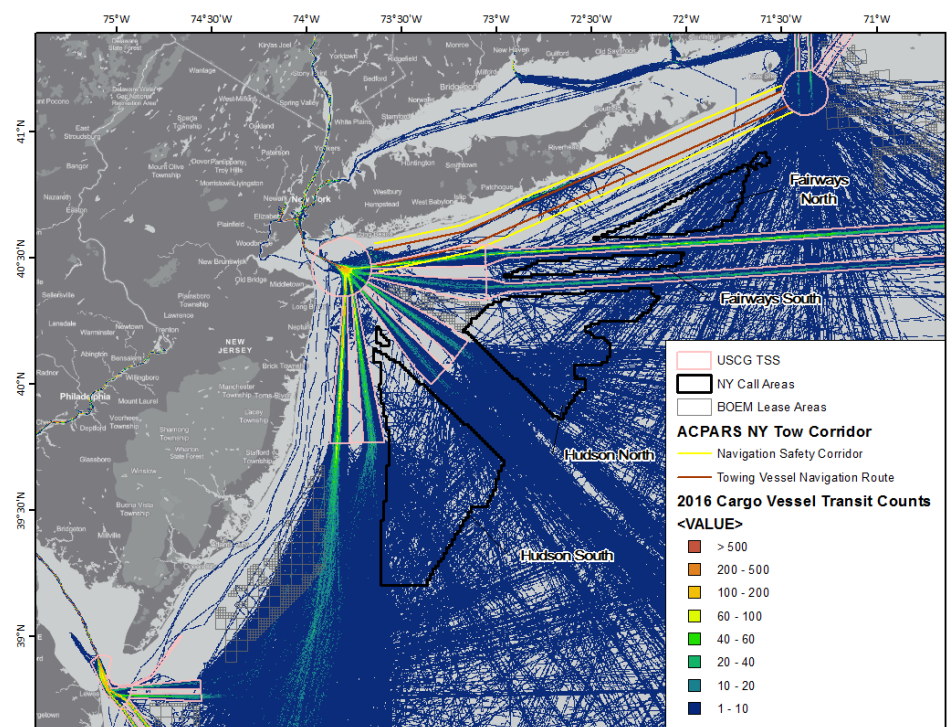
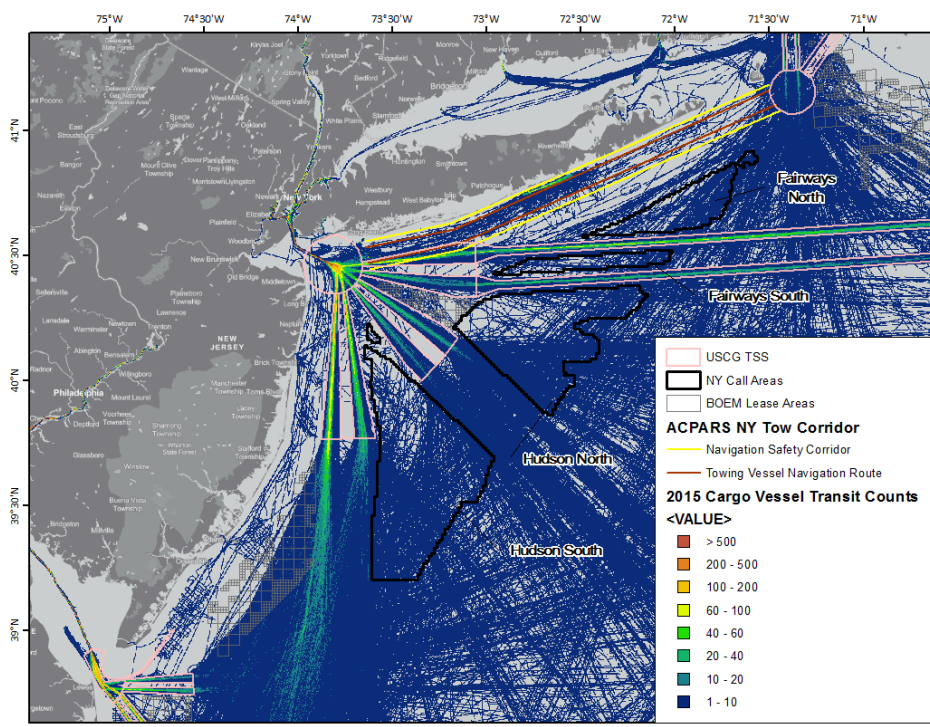
[arianna.baker@boem.gov](mailto:arianna.baker@boem.gov)

703-787-1677

# Navigation Analysis: 2015-2016 All Vessels



# Navigation Analysis: 2015-2016 Cargo



# Navigation Analysis: 2015-2016 Tug and Towing

