



## **Atlantic OCS Region**

**Scientific Committee Meeting  
February 8, 2012**

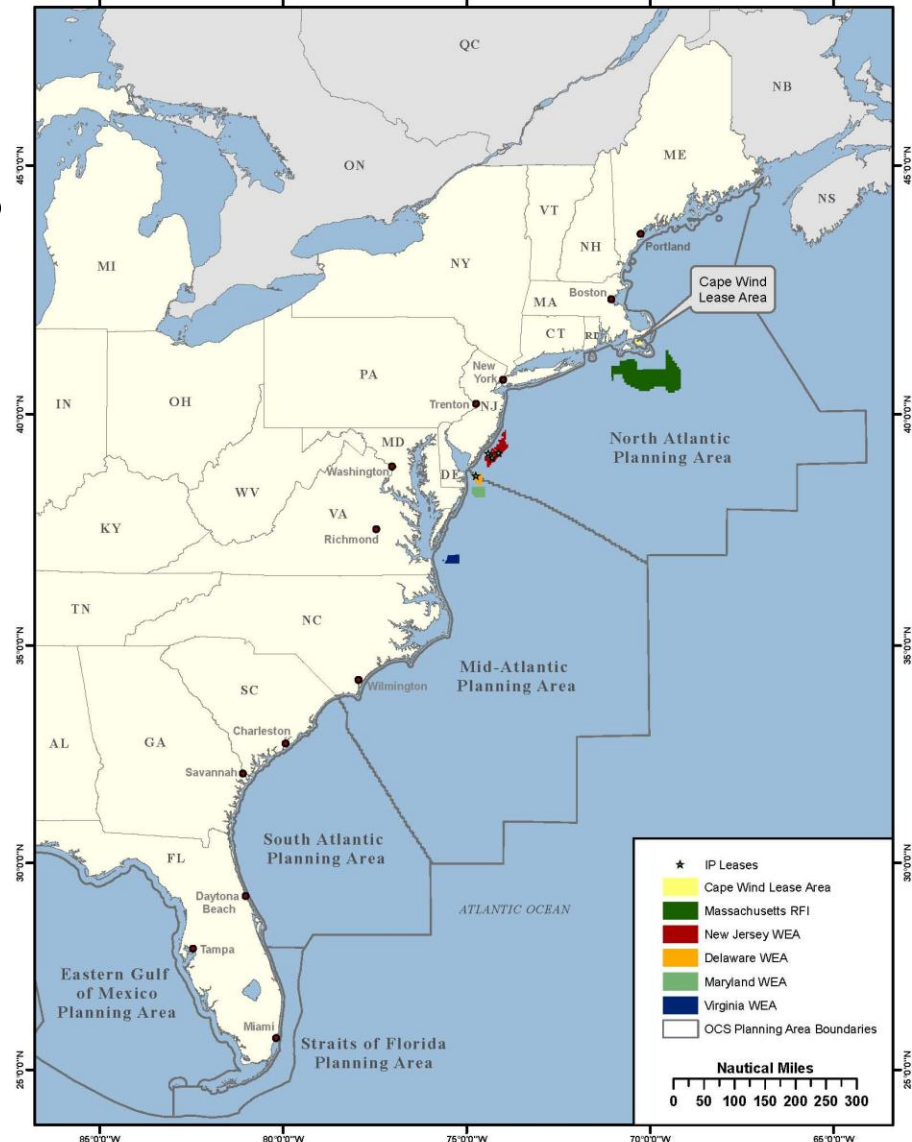
**Mary C. Boatman, Ph.D.  
Environmental Studies Chief  
Office of Renewable Energy Programs**



- Oil and Gas Program
- Marine Minerals Program
- Renewable Energy Program



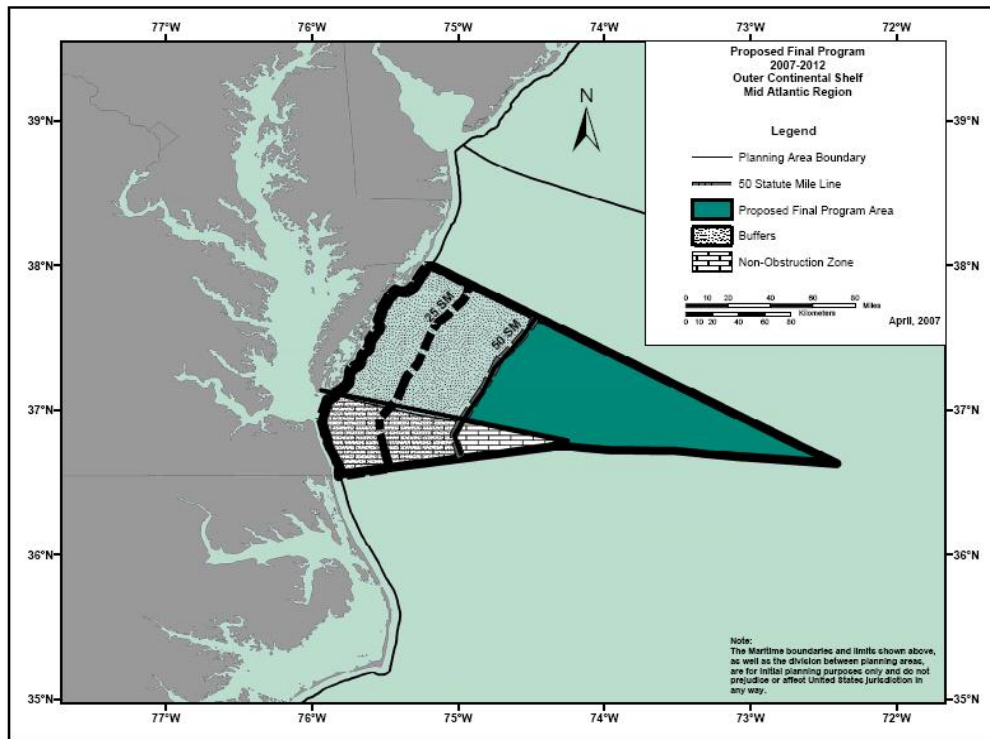
- Four Planning Areas
- Maine to Florida
- 3 – 200 nm



## 2007-2012 Leasing Program

## Virginia

## Lease Sale 220



## Workshop

Dec. 2008

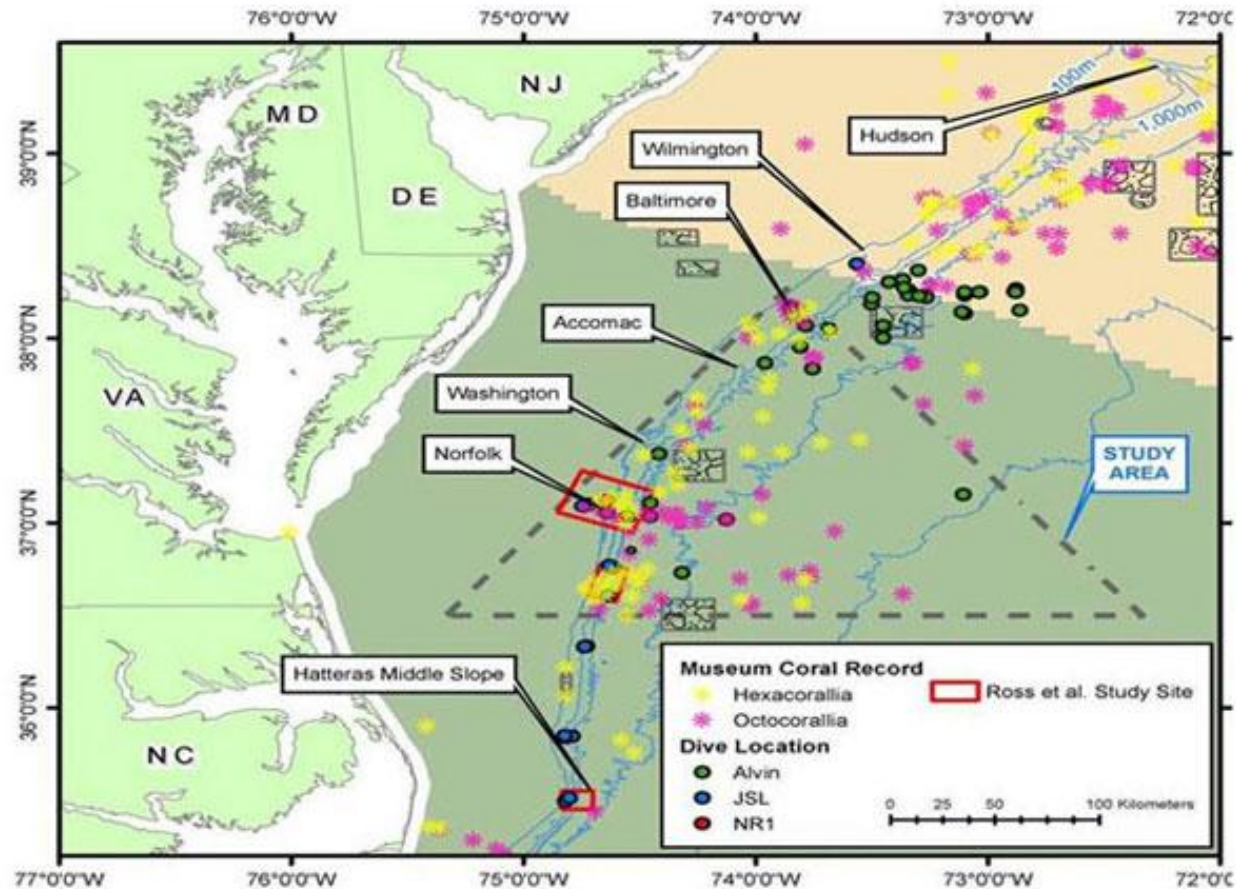
## Postponed

May 2010



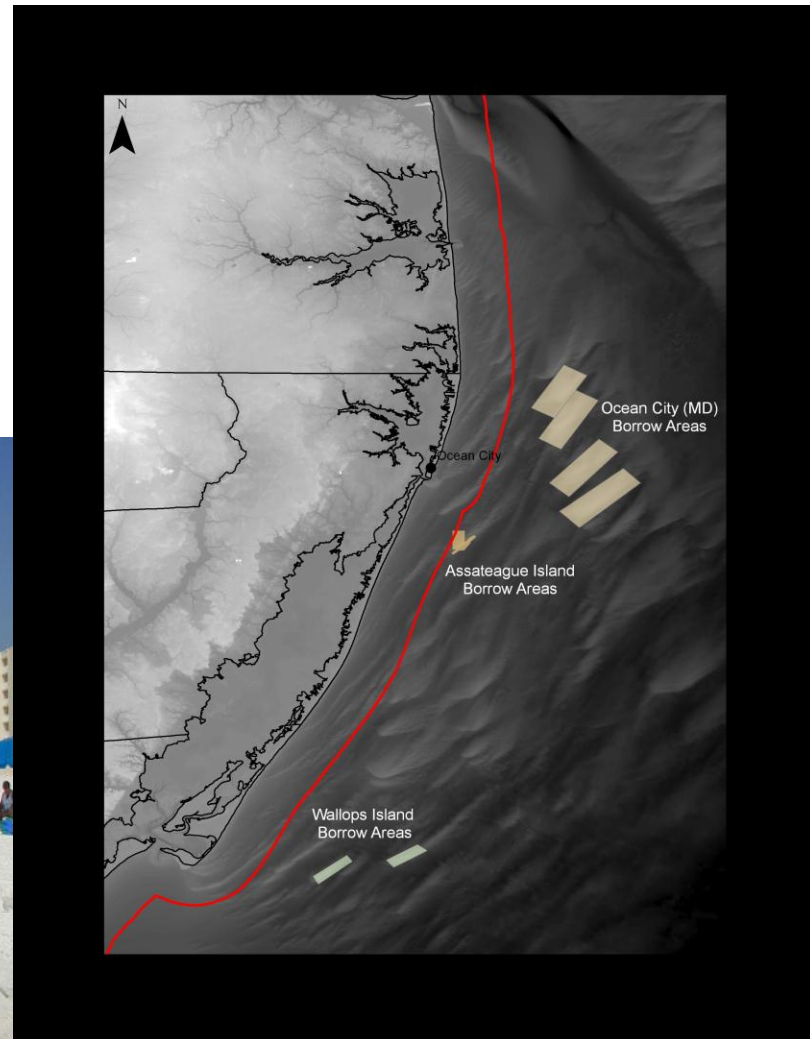
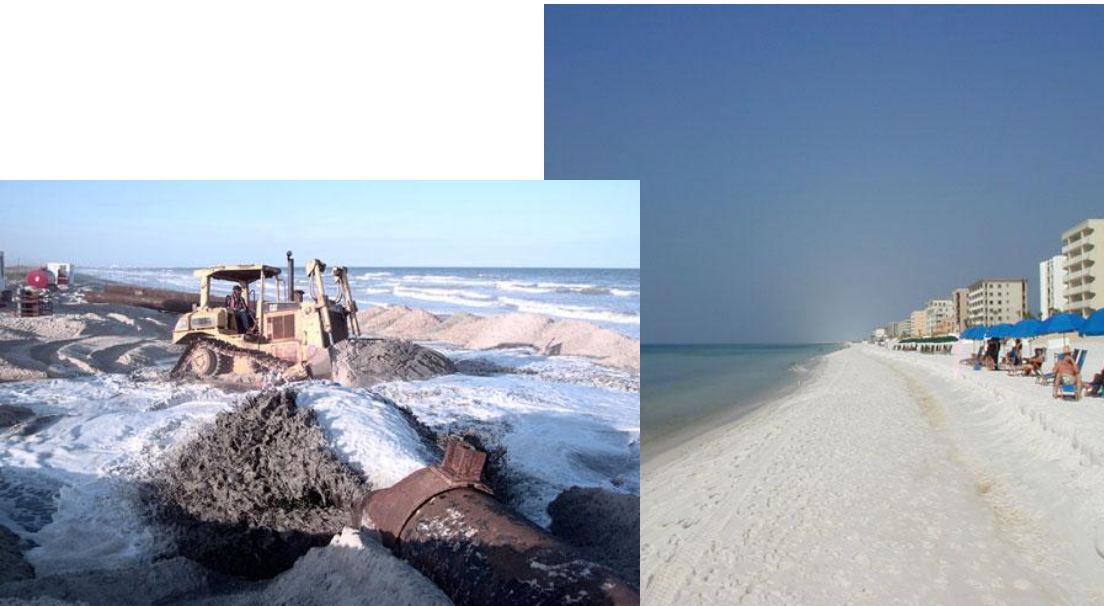
## Exploration and Research of Mid-Atlantic Deepwater Hard Bottom Habitats and Shipwrecks with Emphasis on Canyons and Coral Communities

Joint study  
BOEM,  
USGS,  
NOAA



- Geological and Geophysical Programmatic Environmental Impact Statement
- Information syntheses to support proposed lease sales in Mid- and South Atlantic
- Marine Mammal surveys
- 2012-2017 – no proposed lease sales

## Beach Renourishment Borrow Sites on OCS 7-8 Planned for 2012



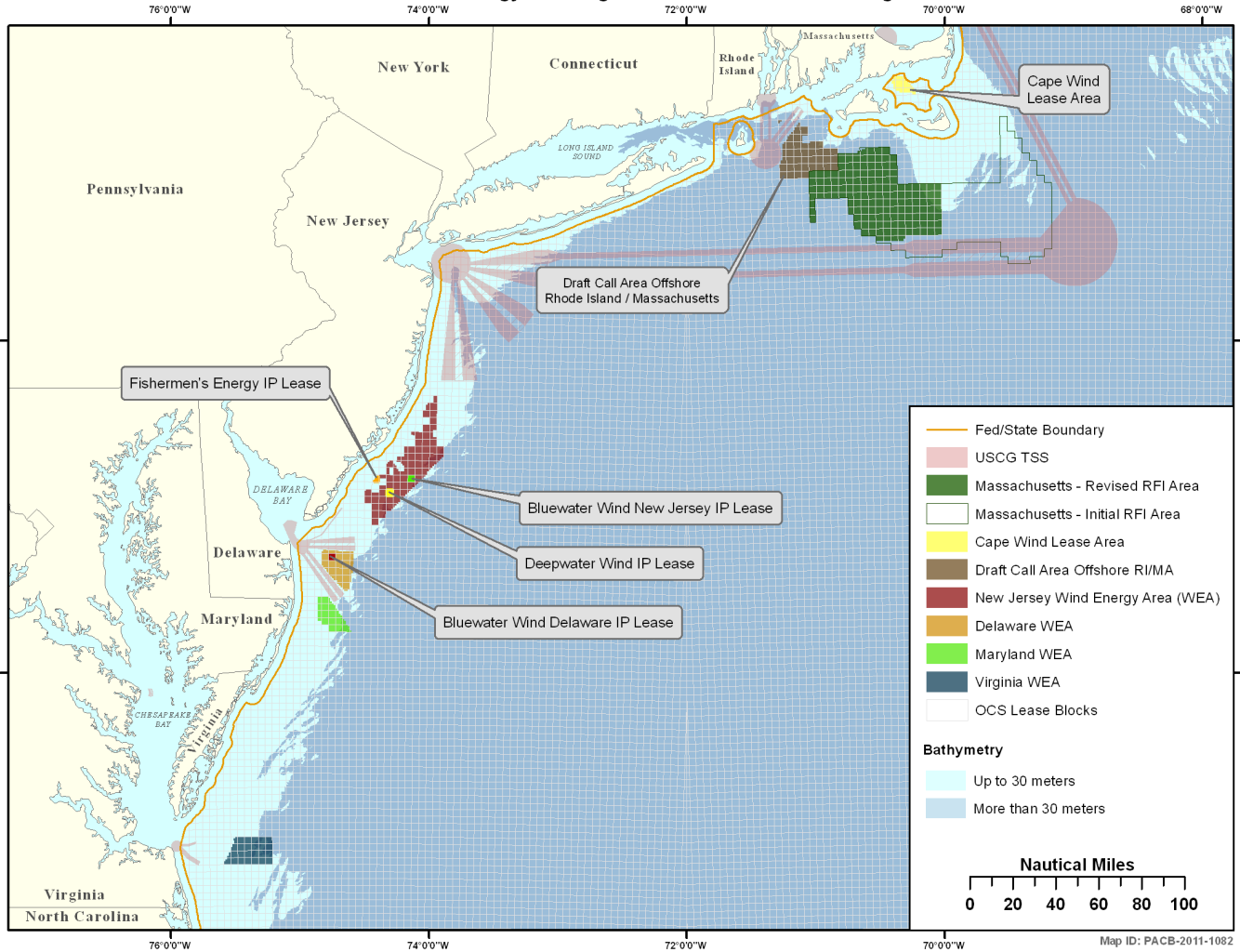
## Wind Energy

## Marine Hydrokinetic (Ocean Current)





Wind Energy Planning Areas - Massachusetts to Virginia



Wind Energy Areas

Research Leases

Cape Wind Project

- Announced on November 23, 2010 by Secretary of the Interior Ken Salazar
- Initiative to simplify responsible renewable wind energy development on the Atlantic Outer Continental Shelf (OCS) by
  - 1) identifying areas most conducive to wind energy development (Wind Energy Areas or WEAs),
  - 2) coordinating environmental studies, and
  - 3) utilizing large-scale planning and an expedited leasing process.
- WEAs are identified through state task forces (comprised of elected state, local, and tribal officials), comments received on public notices, and consultations.

Conflicts with human use patterns

Interactions with marine life

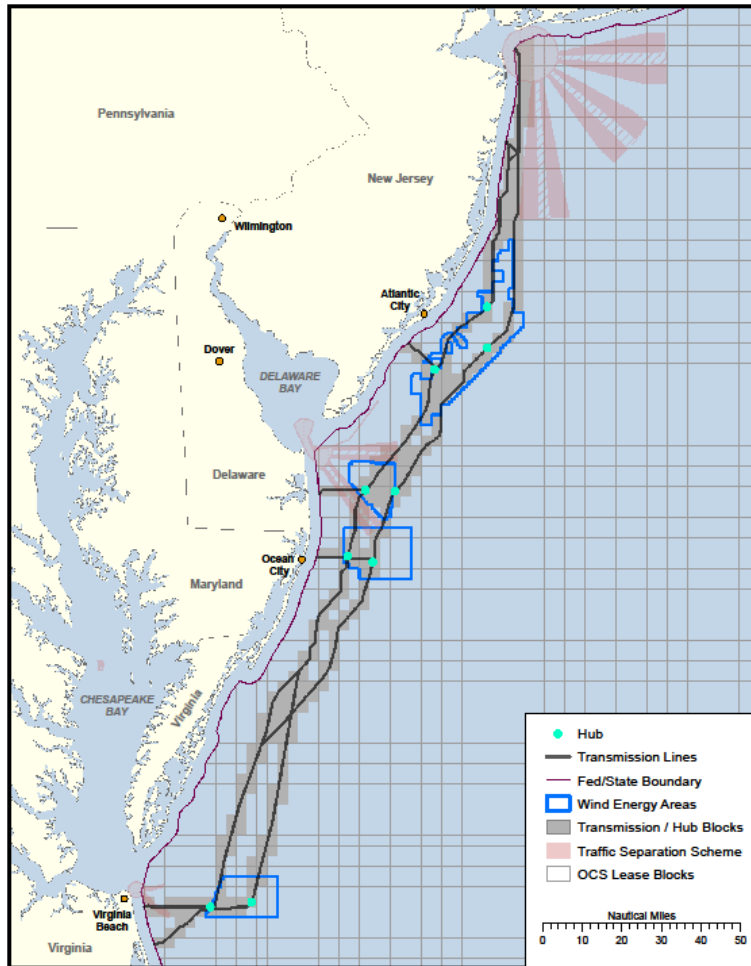
Cultural impacts



- BSEE Technology Assessment and Research Program
- Department of Energy, National Renewable Energy Laboratory (NREL)
- National Oceanographic Partnership Program
- State Initiatives



Mid Atlantic Wind Energy Areas - Atlantic Wind Connect Transmission Lines



- Right-of-Way Grant (ROW)
- 680 mi transmission line installed in 5 phases (NY to VA)
- Request for Competitive Interest
- Anticipate preparing an EIS



