



**David Bigger, Ph.D.**  
**Office of Renewable Energy Programs**

David.Bigger@boem.gov



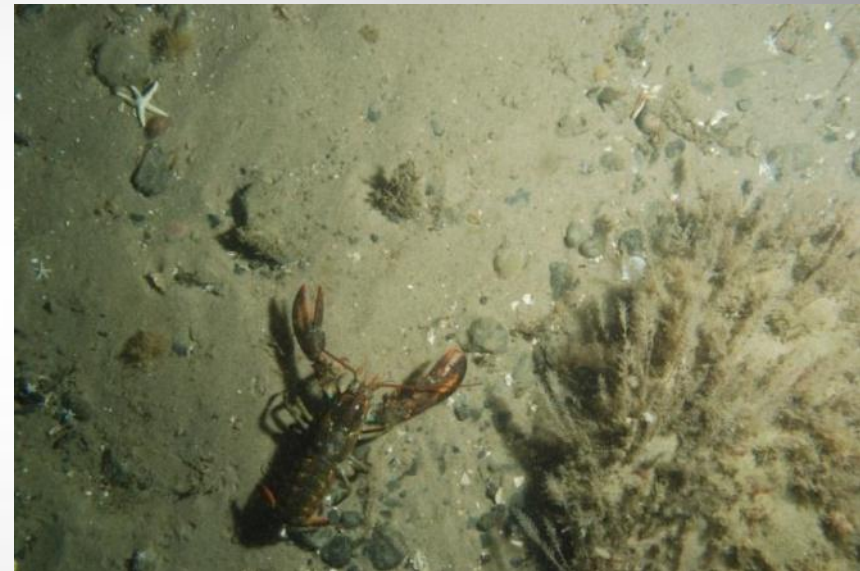


# Proposed Study

## Fishery Physical Habitat and Epibenthic Invertebrate Baseline Data Collection



Develop regional scale benthic habitat baseline in order to conduct impact assessments, aid interpretation of HRG survey data, and monitor post-development impacts from offshore renewable energy.



- Conduct imaging surveys (still photography and video) of BOEM identified Wind Energy Areas.
- Provide distribution and density estimates of prevalent fauna and a classification of substrate type across the survey domain.
- Classify habitat using a BOEM-specified habitat classification model.

