



David Bigger, Ph.D.
Office of Renewable Energy Programs

David.Bigger@boem.gov



- Identify sites for Atlantic offshore wind development where bird aggregations are least probable and will therefore avoid or minimize impacts to birds.
- Evaluate migratory corridors that may intersect potential wind development sites.
- Compile a list of focal species that have conservation need, are representative of a broader groups species sharing the same or similar conservation needs, and/or have a high likelihood that factors impacting can be realistically addressed.





Deferred Study

Tracking Common Terns & Oystercatchers with VHF Arrays (A pilot study)



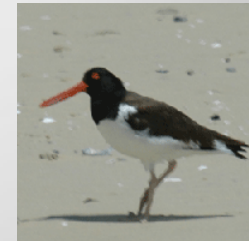
Improve assessments and ability to discriminate between sites that are potential suitable for development from those that are not.



BOEM Renewable Energy Program



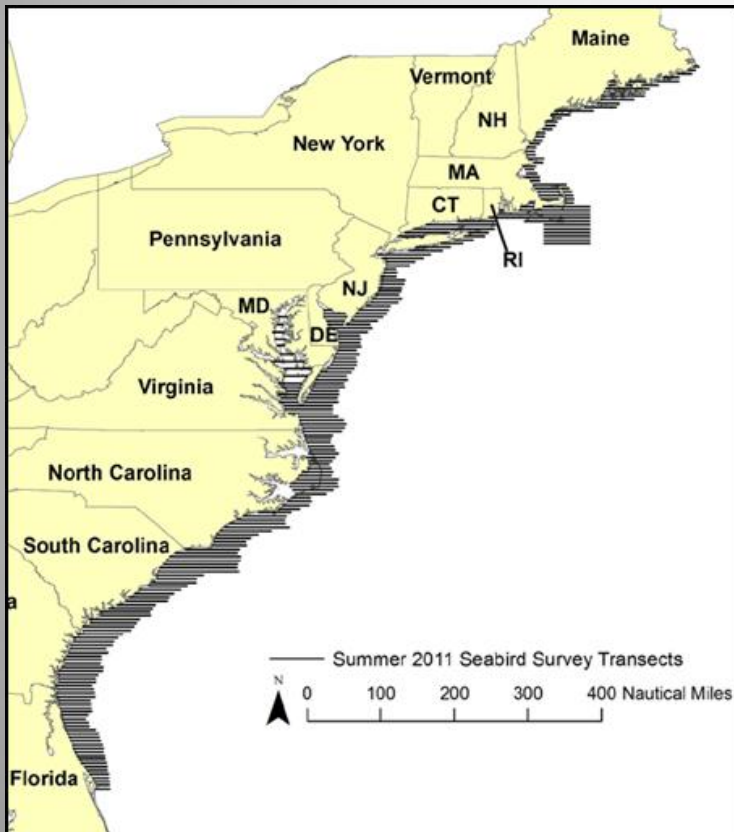
- 15 oystercatchers & 50 common terns captured during the breeding season and fitted with VHF transmitters.
- Network of VHF receiving stations deployed on the perimeter of Nantucket Sound, Block Island, and Long Island.
- Signals will be logged at station during the breeding and migratory periods.



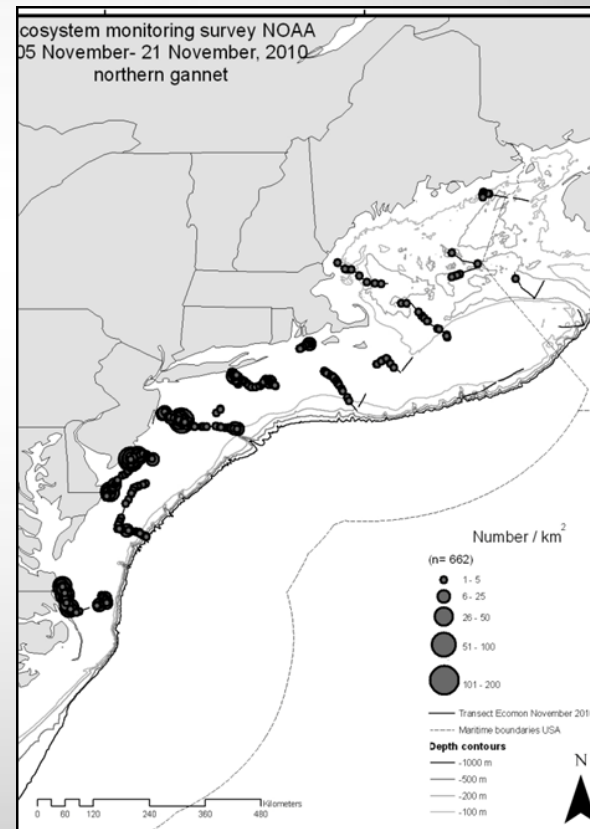
- Identify sites for Atlantic offshore wind development where bird aggregations are least probable and will therefore avoid or minimize impacts to birds.
- Evaluate migratory corridors that may intersect potential wind development sites.
- Compile a list of focal species that have conservation need, are representative of a broader groups species sharing the same or similar conservation needs, and/or have a high likelihood that factors impacting can be realistically addressed.

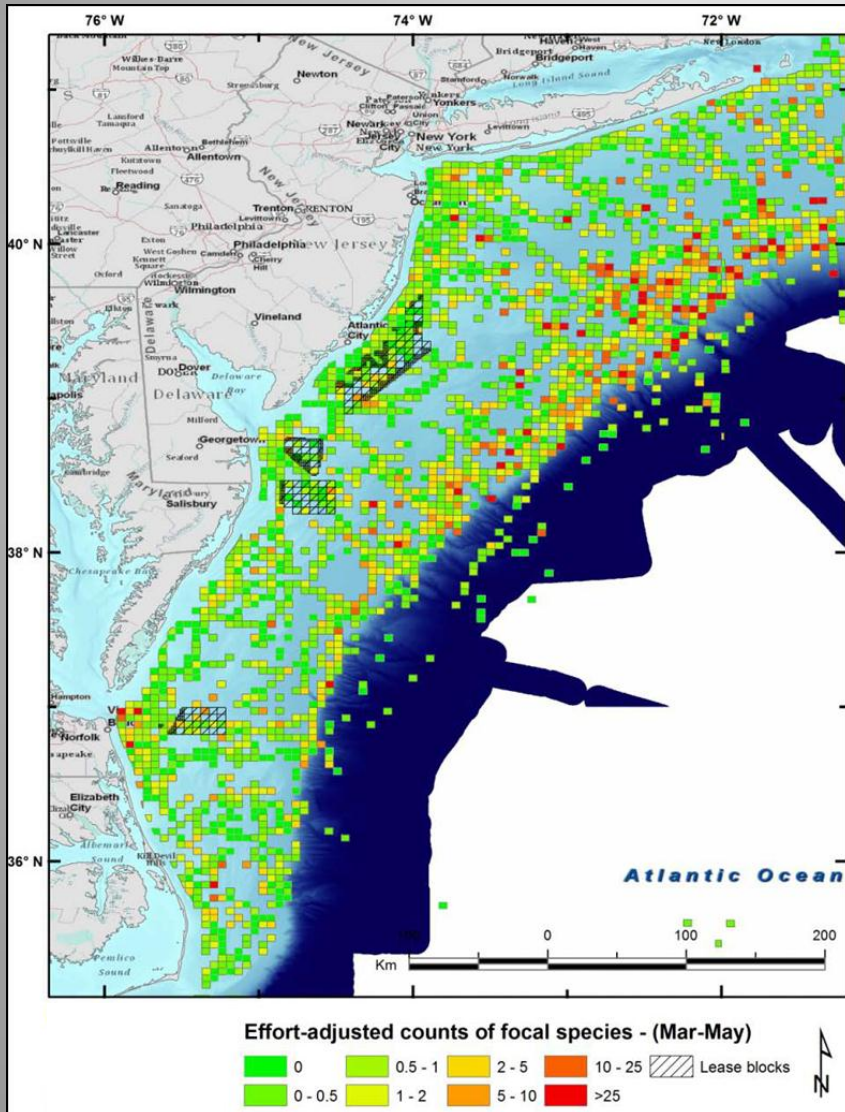


Atlantic Marine Assessment Program for Protected Species



Surveying for Marine Birds in the Northwest Atlantic





Compendium of Avian Information and Comprehensive GIS Geodatabase

- 5 year partnership with USGS, FWS, NOAA
- 100 years of data

<http://www.boem.gov/Environmental-Stewardship/Environmental-Studies/Renewable-Energy/Renewable-Energy-Research-Ongoing-Studies.aspx>





Proposed Study

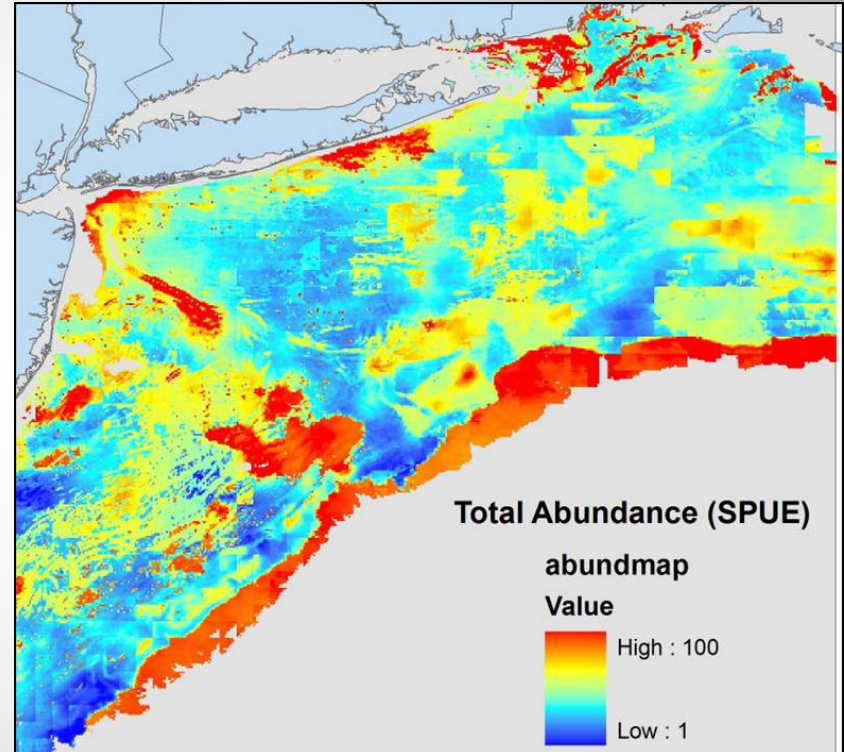
Integrative Statistical Modeling and Predictive Mapping of Seabird Distribution and Abundance on the Atlantic OCS

Provide easily understandable information to aid offshore wind siting decisions and reduce the risk of impacts to birds

BOEM Renewable Energy Program



- Develop statistical models that combine existing data and environmental predictors.
- Create a flexible product that supports updating.
- Assemble data layers into a common spatial format for the Multipurpose Marine Cadaster.





Proposed Study

Fishery Physical Habitat and Epibenthic Invertebrate Baseline Data Collection



Develop regional scale benthic habitat baseline in order to conduct impact assessments, aid interpretation of HRG survey data, and monitor post-development impacts from offshore renewable energy.



- Conduct imaging surveys (still photography and video) of BOEM identified Wind Energy Areas.
- Provide distribution and density estimates of prevalent fauna and a classification of substrate type across the survey domain.
- Classify habitat using a BOEM-specified habitat classification model.

