

- Identify sites for Atlantic offshore wind development where bird aggregations are least probable and will therefore avoid or minimize impacts to birds.
- Evaluate migratory corridors that may intersect potential wind development sites.
- Compile a list of focal species that have conservation need, are representative of a broader groups species sharing the same or similar conservation needs, and/or have a high likelihood that factors impacting can be realistically addressed.



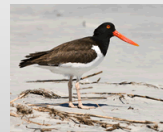


# Deferred Study

## Tracking Common Terns & Oystercatchers with VHF Arrays (A pilot study)



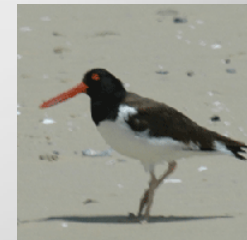
Improve assessments and ability to discriminate between sites that are potential suitable for development from those that are not.



**BOEM Renewable Energy Program**



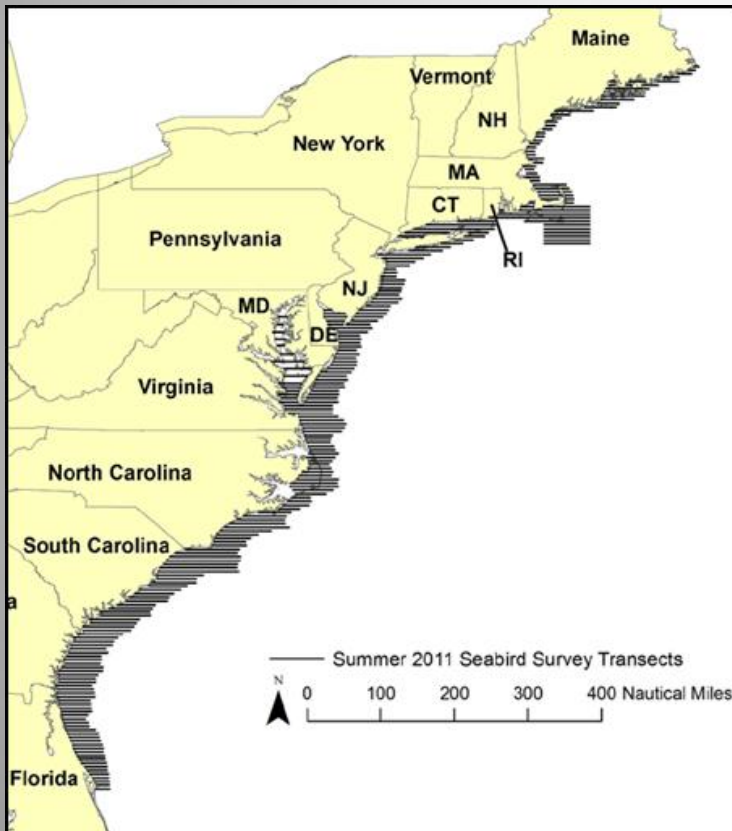
- 15 oystercatchers & 50 common terns captured during the breeding season and fitted with VHF transmitters.
- Network of VHF receiving stations deployed on the perimeter of Nantucket Sound, Block Island, and Long Island.
- Signals will be logged at station during the breeding and migratory periods.



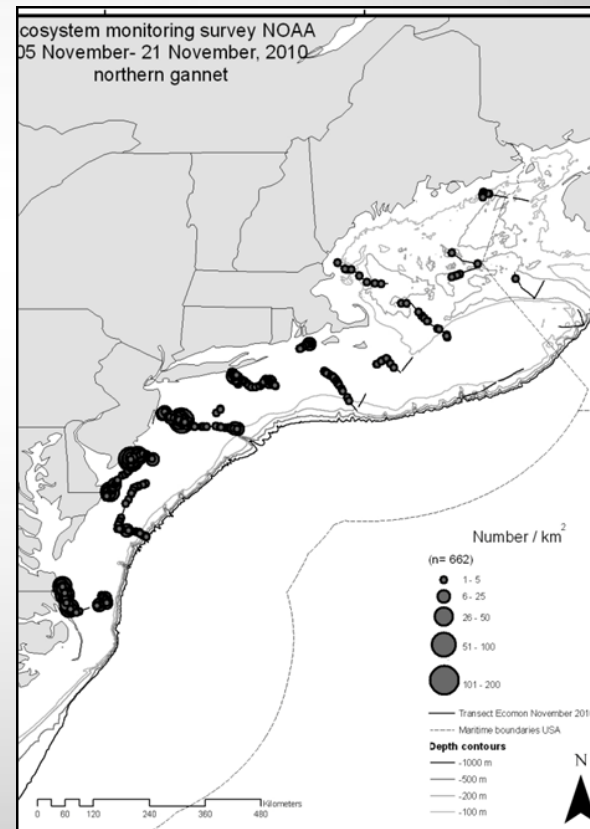
- Identify sites for Atlantic offshore wind development where bird aggregations are least probable and will therefore avoid or minimize impacts to birds.
- Evaluate migratory corridors that may intersect potential wind development sites.
- Compile a list of focal species that have conservation need, are representative of a broader groups species sharing the same or similar conservation needs, and/or have a high likelihood that factors impacting can be realistically addressed.

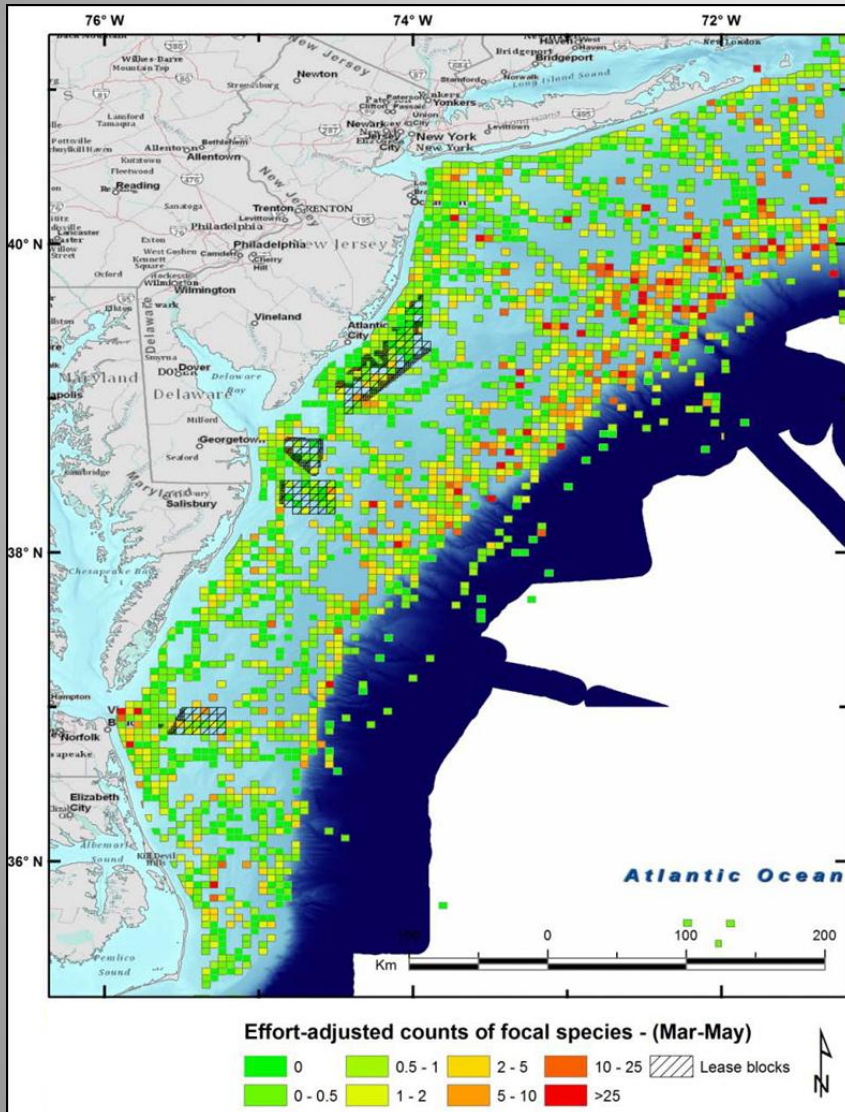


## Atlantic Marine Assessment Program for Protected Species



## Surveying for Marine Birds in the Northwest Atlantic





## Compendium of Avian Information and Comprehensive GIS Geodatabase

- 5 year partnership with USGS, FWS, NOAA
- 100 years of data

<http://www.boem.gov/Environmental-Stewardship/Environmental-Studies/Renewable-Energy/Renewable-Energy-Research-Ongoing-Studies.aspx>

