



Jeff Reidenauer, PhD

Chief, Marine Minerals Division

Office of Strategic Resources

703-787-1851

jeffrey.reidenauer@boem.gov

St. Petersburg, FL

January 9, 2018



- **Mission:** Manage ocean energy and minerals resources on the Outer Continental Shelf (OCS) in an environmentally and economically responsible manner

PROGRAM AREAS



Oil & Gas

5-year leasing plan
Regional lease sales



Renewable Energy

Site identification through stakeholder input and state task forces

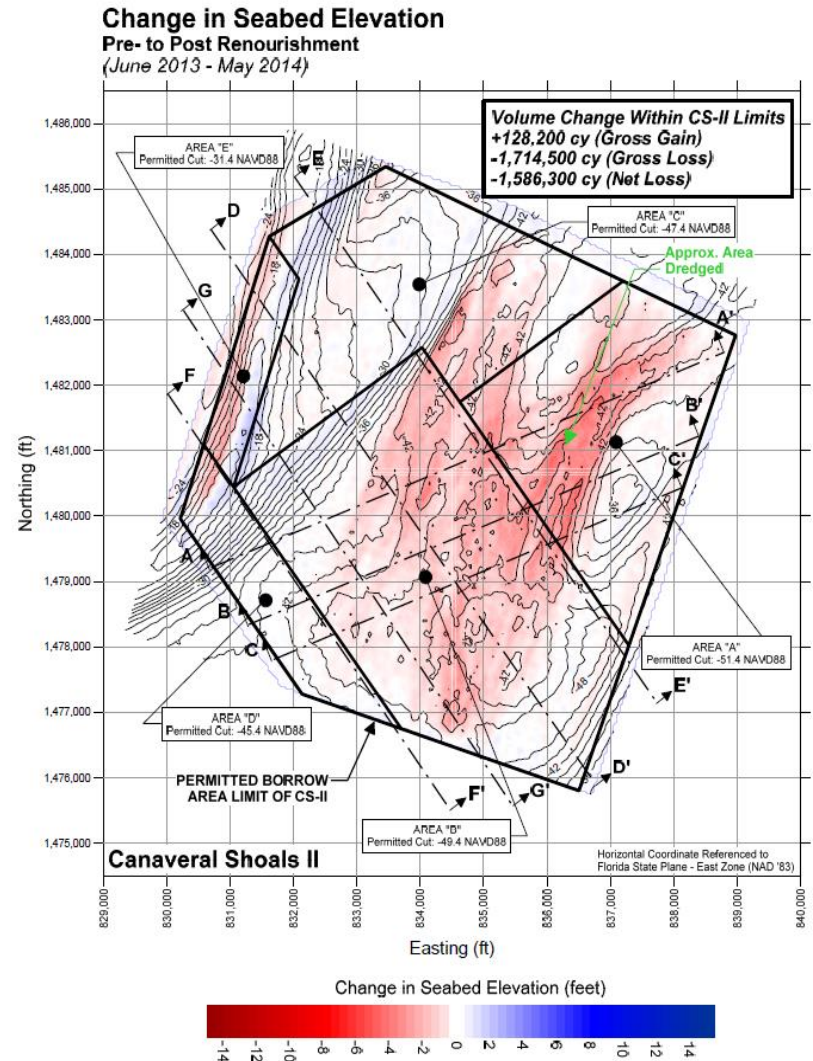


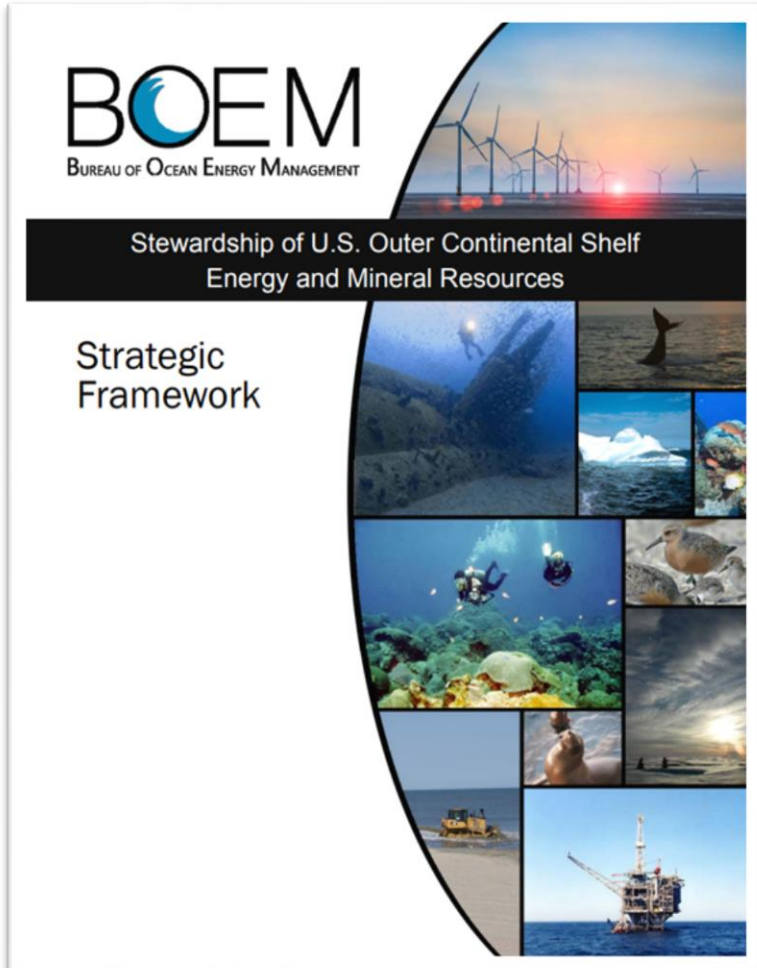
Marine Minerals

Through negotiated agreement with state and local entities



- OCS energy and mineral resource assessment
- Locations of sensitive benthic habitats, submerged cultural resources, undersea cables, etc. for environmental analysis, reviews and post monitoring
- Track Federal leases and resource utilization (FL = 22 OCS sand negotiated agreements)
- Pre- and post-dredge bathymetric surveys
- **Ocean and Coastal Mapping Integration Act** – member of IWG-OCM for development of integrated mapping plans





- Geologists, Biologists, Oceanographers, GIS Analysts, Cartographers
- No in-house geophysical or geological acquisition assets
- Data acquisition (through Contracts, Interagency Agreements, Co-op Agreements)
- Information Resources – BOEM/NOAA Marine Cadastre, BOEM TIMS, BOEM Marine Mineral Information System (MMIS) databases, Env Studies (ESPIS)

Agreements/Partnerships

- BOEM/FL Co-op Agreement (2014-2018)
- USACE/BOEM MOU (2017)
- AASG/BOEM MOU (2015)
- IA with NOAA OCM (2017-2022)

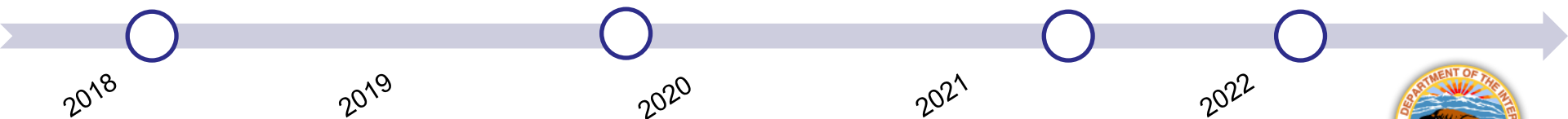
- **Collection** - currently no new acquisition plans
 - (ASAP Phase 2/GSAP - tbd)
- **Evaluate existing offshore data** - ongoing
 - Geophysical data: multi-beam, chirp sub-bottom profiling, swath bathymetry, sidescan sonar and magnetometer
 - Geological data: sediment samples (vibracores and surface grab samples) analyzed for texture (grain size) and composition (organic, mineral and shell content, color and sand percentage)
- **Identify data gaps / priority areas**
- **Assess future sand / sediment needs**
- **Identify potential sources**
- **Facilitate public accessibility of data**

Florida Lease Borrow Areas

- **Pre Dredge Surveys**
 - Martin – Jan 2018
 - Longboat Key - tbd
 - Patrick AFB - tbd
 - Collier - tbd
- **Post Dredge Surveys**
 - Brevard – tbd

BOEM Cooperative Agreement with FDEP

ASAP 2 / GSAP / New Cooperative Agreements ??



2018

2019

2020

2021

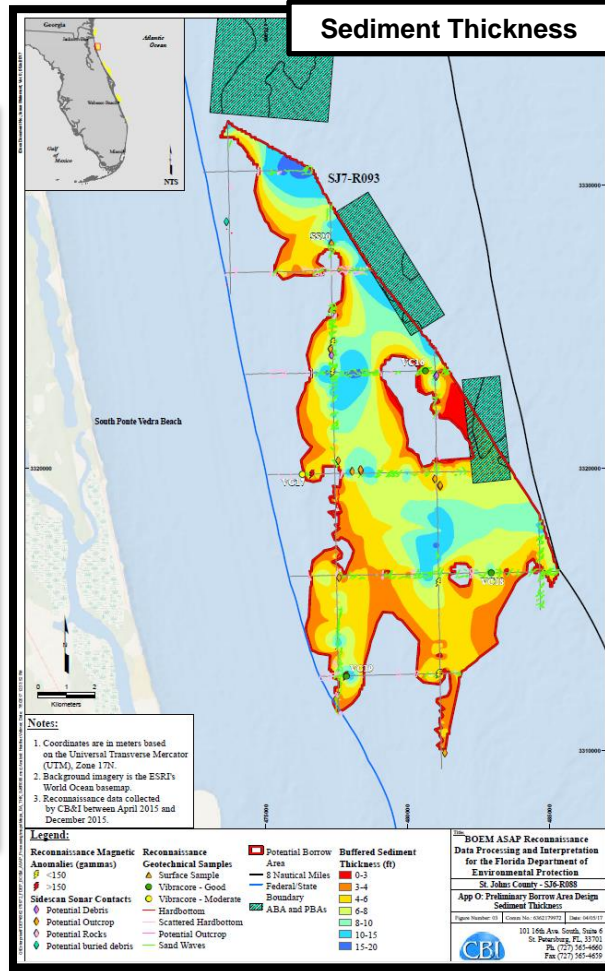
2022



- Build new relationships and strengthen existing ones
- Identify potential projects for collaboration on sub-bottom mapping efforts
 - Geophysical survey collection
 - Geological sample collection
 - High Resolution DEMs (over potential sand resource areas)



PROJECT: MMS COOPERATIVE STUDY CENTRAL FLORIDA EAST COAST		BORING ID: VM-4	
INSTALLATION DATE:		DRILLING METHOD: VIBRACORE	
CORE DIAMETER: 3.5	TOTAL DEPTH: 19.3 FT.	GEOLOGISTS: H. FREDENBERG, A. DABOUS, C. FISCHLER	
DEPTH (FT)	GEOLOGIC DESCRIPTION	LITH. USCS SYMBOL CLASS	COMMENTS
(0-1)	FINE TO MEDIUM GRAINED SAND MODERATE LIGHT GRAY ANGULAR TO SUB-ANGULAR LOW SPHERICITY	SW	ACCESSORY MINERALS: <1% HEAVY MINERALS, 25% SHELL, 80% CALCILITITE FOSSILS: MOLLUSKS, OSTRACOD, BARNACLES, ECHINODS, BENTHIC FORAMINIFERA, CRUSTACEA, 1.33% FINES
(1-2)			
(2-4)			
(4-10)	FINE TO COARSE SAND MODERATE LIGHT GRAY TO MODERATE GRAY ANGULAR TO SUB-ANGULAR LOW SPHERICITY		ACCESSORY MINERALS: 20% CALCILITITE, 20% SHELL, <1% HEAVY MINERALS FOSSILS: MOLLUSKS, OSTRACOD, GOLLITES, BARNACLES, BENTHIC FORAMINIFERA, BEYOZOA, ECHINODS, 1.94% FINES
(4-6)			1.20% FINES
(6-8)			
(8-10)			2.37% FINES
(10-16)	VERY FINE TO COARSE SAND LIGHT OLIVE GRAY ANGULAR TO SUB-ANGULAR LOW SPHERICITY		ACCESSORY MINERALS: 30% SHELL, <1% HEAVY MINERALS FOSSILS: MOLLUSKS, ECHINOD, OSTRACODS, BENTHIC FORAMINIFERA, BARNACLES, CRUSTACEA, BEYOZOA, SPICULES 5.06% FINES
(12-14)			12.75% FINES
(14-16)			5.33% FINES
(16-18)	FINE TO MEDIUM GRAINED SAND LIGHT OLIVE GRAY ANGULAR TO SUB-ANGULAR LOW SPHERICITY		ACCESSORY MINERALS: 15% SHELL, <1% HEAVY MINERALS FOSSILS: MOLLUSKS, BARNACLES, ECHINOD, BENTHIC FORAMINIFERA 16.75% FINES
(18-19.3)	MEDIUM TO COARSE GRAINED PELLETODAL SAND YELLOWISH GRAY PREDOMINANTLY PELLETS, OOLITES AND VERY SMALL AMOUNT OF SHELL DEBRIS SUB-ANGULAR TO WELL-ROUNDED, MEDIUM TO HIGH SPHERICITY		ACCESSORY MINERALS: 4% CALCILITITE, <1% QUARTZ SAND FOSSILS: OOLITES, MOLLUSKS, BENTHIC FORAMINIFERA 8.0% FINES



Reconnaissance Offshore Sand Search Inventory (OSS)

DATA.GOV | DATA TOPICS - IMPACT APPLICATIONS DEVELOPERS CONTACT

DATA CATALOG | / Datasets Organizations

Search datasets.

Datasets ordered by Popular

Organization Types: State Government

Topics: Ocean

Filter by location: Enter location...

1 dataset found

VA Atlantic Coast Recreational Use
Virginia Department of Environmental Quality - As a member of the Mid-Atlantic Regional Council on the Ocean (MARCO), Virginia, through its Coastal Zone Management (CZM) Program, collected information on how the...

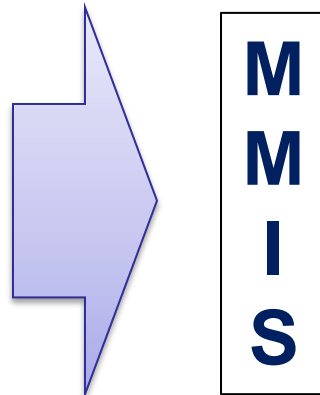
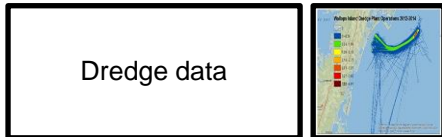
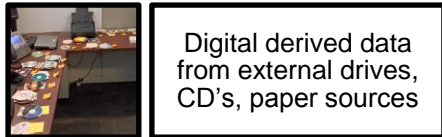
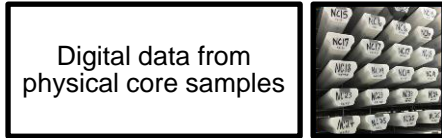
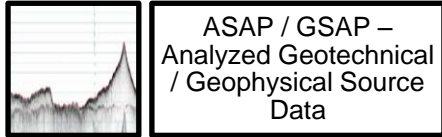
1 dataset found

Topics

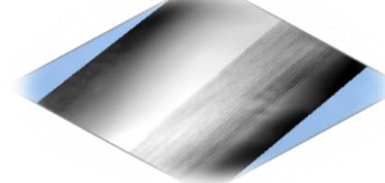
OSSI registered with DATA.GOV

Mapping offshore resources with our partners

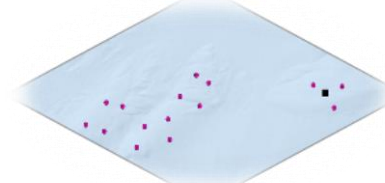




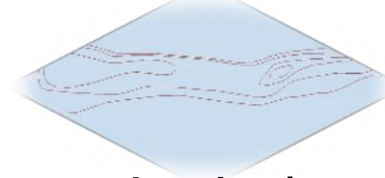
Bathymetry & Backscatter



Environmental Data



Bottom Characteristics



Leasing / Planning/Construction



Discover

Analysis

Id Gaps

Metrics

A tool to support the National OCS Sand Inventory

