

# Supporting Conventional Energy - 2013

<b>Discipline</b>	<b>Title</b>	<b>Rank</b>
<b>HE</b>	<u><a href="#">Platform Impacts on Seafloor Communities in the Southern California Planning Area</a></u>	<b>3</b>
<b>Needed now to take advantage of local collaborations.</b>		



Photo Credit: Bob Wohlers

## **BOEM Information Need:**

Establish information of seafloor communities near platforms in the Pacific Region to identify significant changes in the quality and productivity of this environment and to identify the causes of any change.

## **Relationship to Previous BOEM-Supported Research:**

The platforms and surrounding shell mounds provide a unique habitat for invertebrate and fish communities including over-fished and protected species.

Seafloor communities in the natural sandy sediment habitats surrounding the platforms were sampled at three Federal platforms over 17 years ago.



Photo Credit: Bob Wohlers



Photo Credit: Bob Wohlers



Photo Credit: Sarah Henkel

# OBJECTIVES

- 1) Determine if seafloor communities are distinct in unconsolidated sediments near platforms as compared among other platforms and with undisturbed communities in similar bio-regions.
- 2) Determine if differences in community structure can be correlated with physical and chemical parameters.

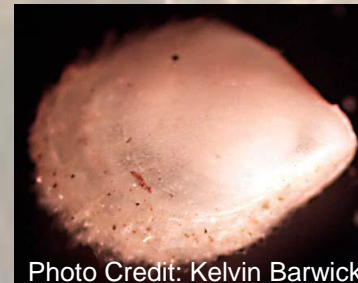


Photo Credit: Kelvin Barwick

# METHODS

- 1) Sample infauna with boxcore and epibenthic megafauna with a trawl near Federal platforms in the summer of 2013; an additional sample will be collected for sediment and chemical analysis;
- 2) Taxonomically identify all organisms and integrate all data into a regional database; use existing health indices and multivariate analysis; and
- 3) Report on platform communities within different bio-regions and describe how community changes correlate with physical and chemical parameters.

