

# **2017 Gulf of Mexico Offshore Sand Management Working Group**

**Introduction**

**New Orleans, Louisiana**

**December 7, 2017**

**Bridgette Duplantis, BOEM ([bridgette.duplantis@boem.gov](mailto:bridgette.duplantis@boem.gov))**

# Purpose of SMWG

- **Receive update on BOEM Marine Minerals Program (MMP) and the Sand Management Working Group (SMWG) efforts**
- **Share information on gulf-wide sand inventory initiatives**
- **Discuss lessons learned from recent sand management efforts**
- **Identify opportunities for continued Gulf of Mexico (GOM) SMWG activities**

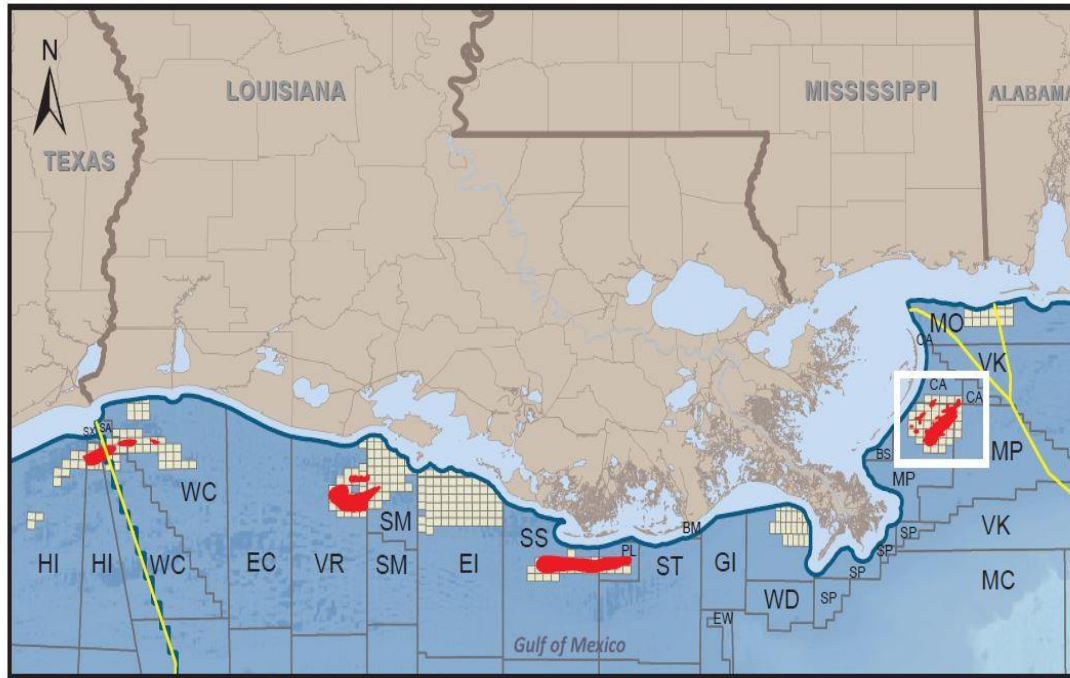


- **Department of the Interior (DOI)**
  - **Bureau of Ocean Energy Management (BOEM)**
    - **Gulf of Mexico Region (GOMR)**
      - **Office of Environment (OE)**
        - **Marine Minerals Program (MMP)**
          - **Three dedicated Staff Members**



Bureau of Ocean Energy Management  
Gulf of Mexico Region  
Significant Outer Continental Shelf Sediment Resources

Marine Minerals Program  
[www.boem.gov/Non-Energy-Minerals/  
Managing-Multiple-Uses-in-the-Gulf-of-Mexico.aspx](http://www.boem.gov/Non-Energy-Minerals/Managing-Multiple-Uses-in-the-Gulf-of-Mexico.aspx)



The Marine Minerals Program will **facilitate access to and manage the Nation's Outer Continental Shelf (OCS) non-energy marine minerals**, particularly sand and gravel, through environmentally responsible stewardship of resources, prudent assessments of exploration and leasing activities, coordination with

governmental partners, engagement of stakeholders, strategic planning, and mission-focused scientific research to improve decision making and risk management.



## Cameron Parish Shoreline Restoration Project

10/4/2013 Louisiana CPRA

- **Leasing**
  - Only Agency responsible for managing development of OCS non-energy marine mineral resources
  - Environmental Responsibility (NEPA)
  - Project Monitoring
- **Resource Evaluation**
  - Cooperative Agreements
  - Marine Minerals Sand Inventory Initiative (MMIS)
- **Resource Management**
  - Multiple Uses
- **Environmental Studies**
  - Science based decision making
- **Collaboration, Partnership & Communication**



- **Bureau Priorities:**

- 2003-2007: No dedicated GOM staff; no dedicated funding
- 2009: 1 GOM staff member; no dedicated funding; interest increasing

- **Partnering:**

- 2003-2007: Stakeholder engagement/coordination needs improvement;
- 2009: Lack of early coordination impacts project construction timelines

- **Stewardship of Mineral Resources:**

- 2003-2007: Inventory of sand resources identified as primary need
- 2009: Some geological & geophysical data collected/analyzed through co-ops

- **Managing Multiple Uses:**

- 2003-2007: Surface mineral access not considered when siting petroleum infrastructure, especially approving pipeline abandonment
- 2009: Significant OCS Sediment Resources policy developed and Notice to Lessees (oil and gas) issued

# Impact of SMWG on MMP

## We've come a long way!

- Support for the program at the highest levels in BOEM and DOI
- Dedicated funding & 3 full-time staff in GOM (13 program-wide)
- Encouraging and fostering partnerships outside of Bureau
  - First SMWG since 2009 held in 2015 with nearly 100 attendees
- Supporting (funding) MMP-specific science to inform decisions
- Caminada Headland Shoreline Restoration Project Completed in 2016
  - First restoration project to use sand from Ship Shoal
- Mississippi Coastal Improvements Program (MsCIP) Memorandum of Agreement executed December 2016
  - Largest restoration project to use OCS Sand in the history of our program (19.6 mcy sand)



**DEPARTMENT OF THE INTERIOR**

**Bureau of Ocean Energy Management**

**30 CFR Part 583**

[Docket ID: BOEM-2010-0041;  
MMAA104000]

**RIN 1010-AD90**

**Negotiated Noncompetitive Agreements for the Use of Sand, Gravel, and/or Shell Resources on the Outer Continental Shelf**

**AGENCY:** Bureau of Ocean Energy Management, Interior.

**ACTION:** Final rule.

**SUMMARY:** This final rule establishes new regulations to address the use of Outer Continental Shelf (OCS) sand, gravel, and/or shell resources for shore protection, beach restoration, or coastal wetlands restoration projects by Federal, state, or local government agencies, and for use in construction projects authorized by or funded in whole or in part by the Federal Government. The final rule describes the negotiated noncompetitive agreement process for qualifying projects and codifies new and existing procedures.

**DATES:** This rule is effective December 4, 2017.

**FOR FURTHER INFORMATION CONTACT:** Deanna Meyer-Pietruszka, Chief, Office of Policy, Regulations, and Analysis, Bureau of Ocean Energy Management, at: [deanna.meyer-pietruszka@boem.gov](mailto:deanna.meyer-pietruszka@boem.gov) or 202-208-6352.

**SUPPLEMENTARY INFORMATION:** On March 22, 2016, the Bureau of Ocean Energy Management (BOEM) published in the

memoranda of agreement, as described below).

**Table of Contents**

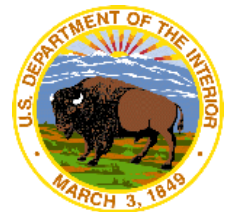
- I. Background
  - A. Program Description
  - B. Program History
- II. Section-by-Section Analysis of the Final Rule
  - A. Subpart A—General
  - B. Subpart B—Reserved
  - C. Subpart C—Outer Continental Shelf Sand, Gravel, and/or Shell Resources Negotiated Agreements
- III. Summary of Comments Received on the Proposed Rule and BOEM Responses
- IV. Legal and Regulatory Analysis

**I. Background**

Congress amended the Outer Continental Shelf Lands Act, 43 U.S.C. 1331-1356 (OCSLA), in 1994 to authorize the Secretary of the Interior to negotiate noncompetitive agreements with any person for the use of OCS sand, gravel, and/or shell resources in a program of, or project for, shore protection, beach restoration, or coastal wetlands restoration undertaken by a Federal, state, or local government agency, or in a construction project either authorized by, or funded in whole or in part by the Federal Government. See 43 U.S.C. 1337(k)(2). In negotiating an agreement for use of the OCS sand, gravel, and/or shell resources, OCSLA provides that “the Secretary may assess a fee based on an assessment of the value of the resources and the public interest served by promoting development of the resources.” However, the same provision of OCSLA also states that no fee will be assessed directly or indirectly against a Federal, state, or local government agency. See 43 U.S.C. 1337(l)(2)(B).

## 30 CFR Part 583

- On October 3, 2017, the Federal Register published BOEM’s final regulations that define the process used by the MMP for issuing negotiated, noncompetitive agreements for sand, gravel, and shell resources on the U.S. Outer Continental Shelf.
- Became effective on December 4, 2017.

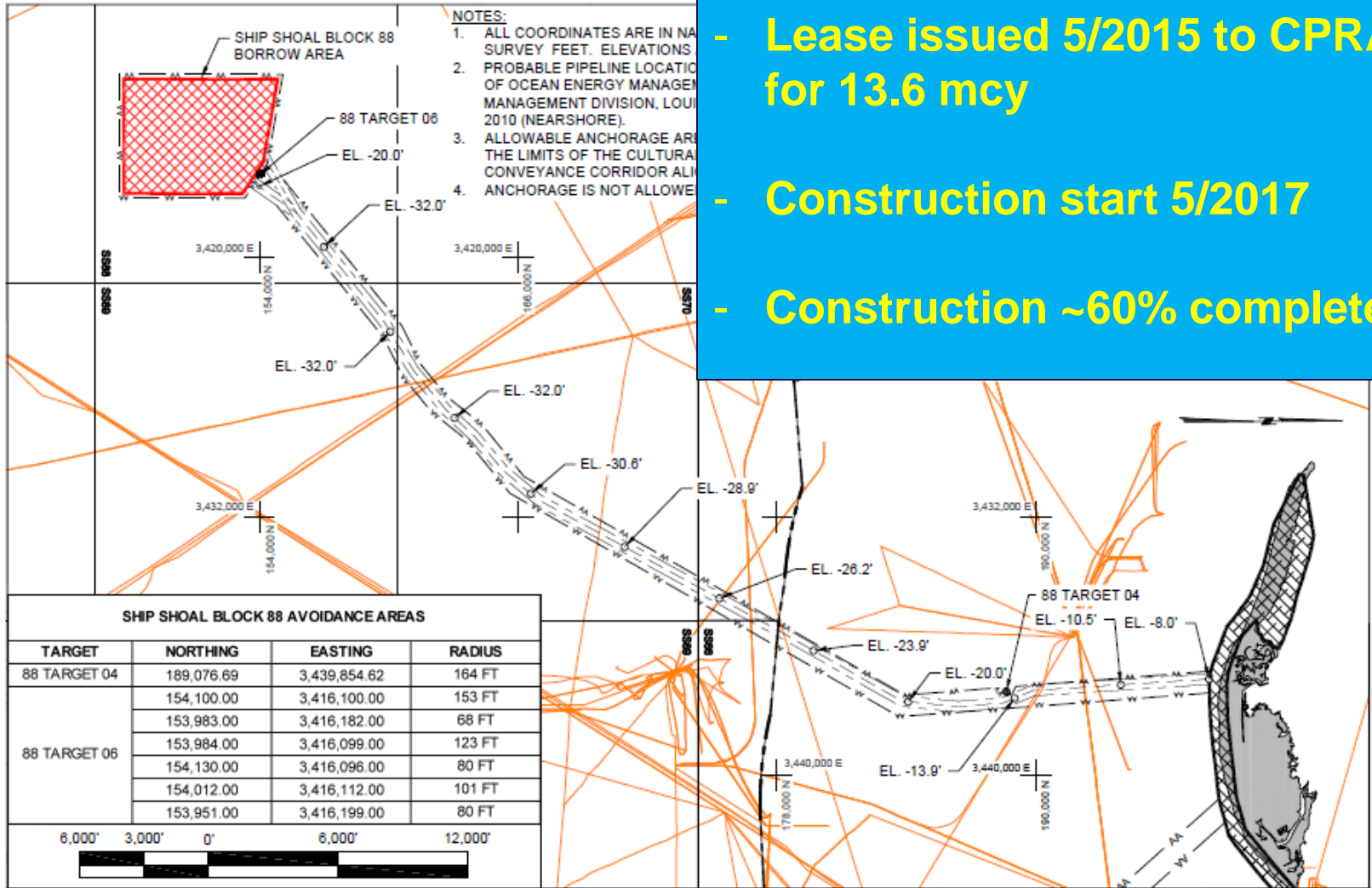




- Build on program success – partnering focus
- Engage in regional Gulf restoration planning efforts
- Improve stewardship capabilities
  - Gulf-wide offshore sediment inventory
  - Managing multiple use conflicts



- Lease issued 5/2015 to CPRA for 13.6 mcy
- Construction start 5/2017
- Construction ~60% complete

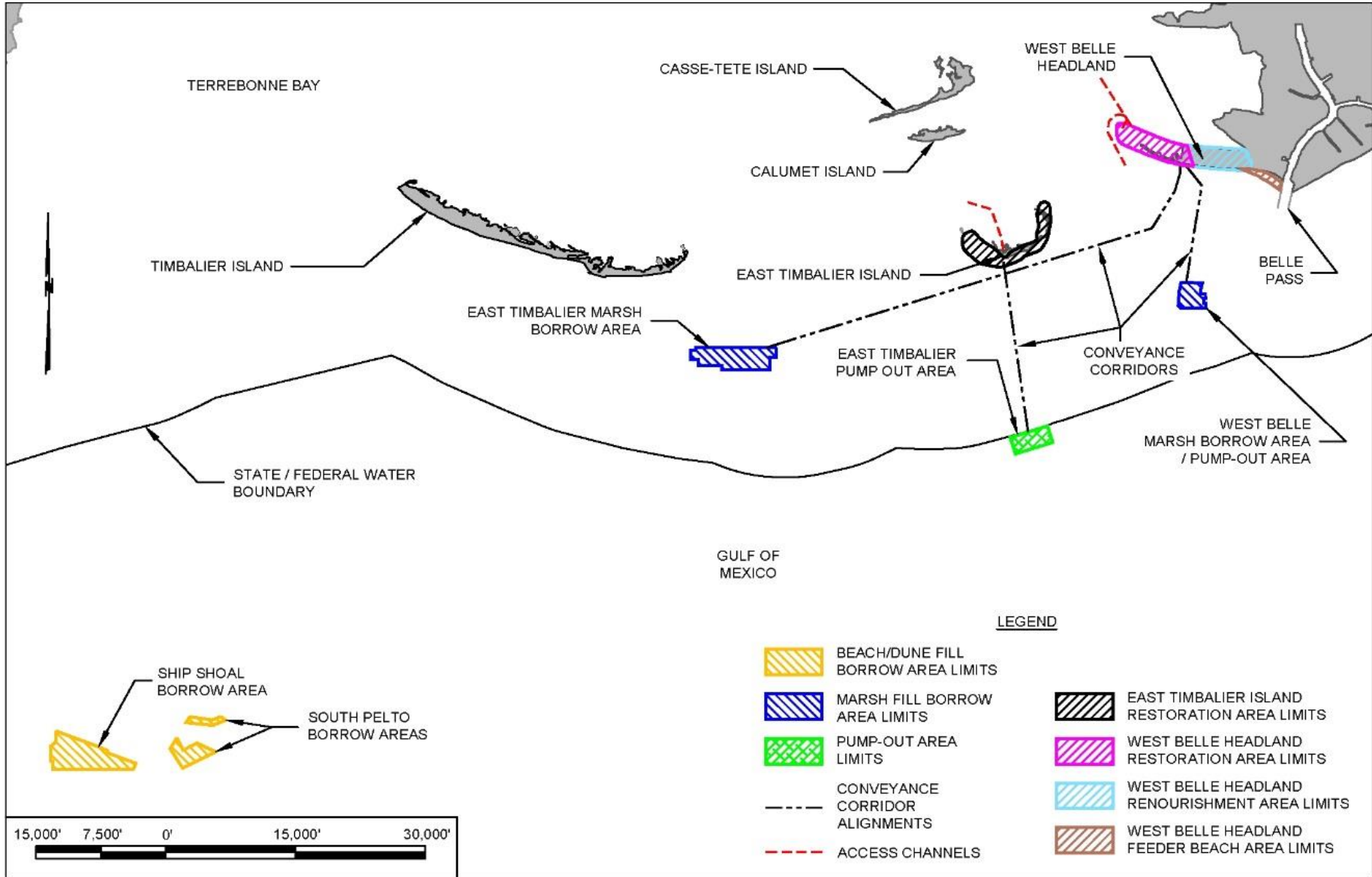


# Project Updates: NRDA Whiskey Island, Louisiana

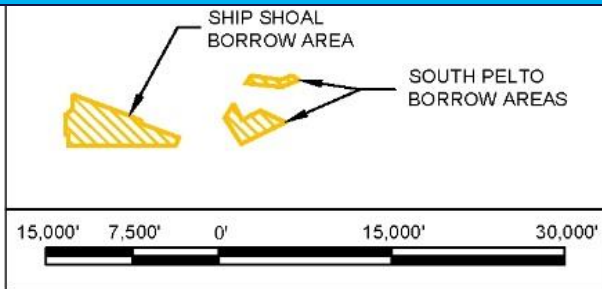
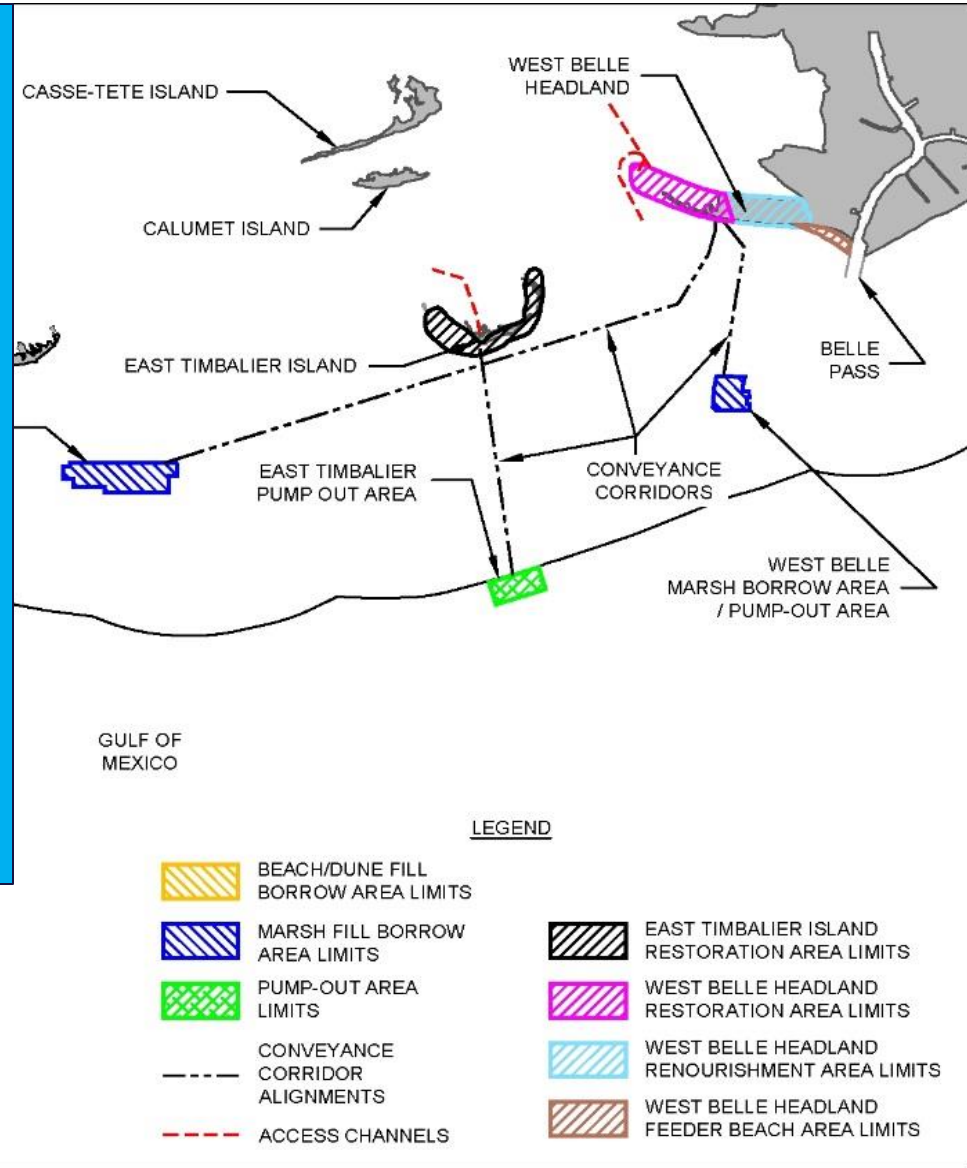


Photo courtesy of  
Great Lakes  
Dredge and Dock  
and LA CPRA

# Project Updates: East Timbalier Island, LA



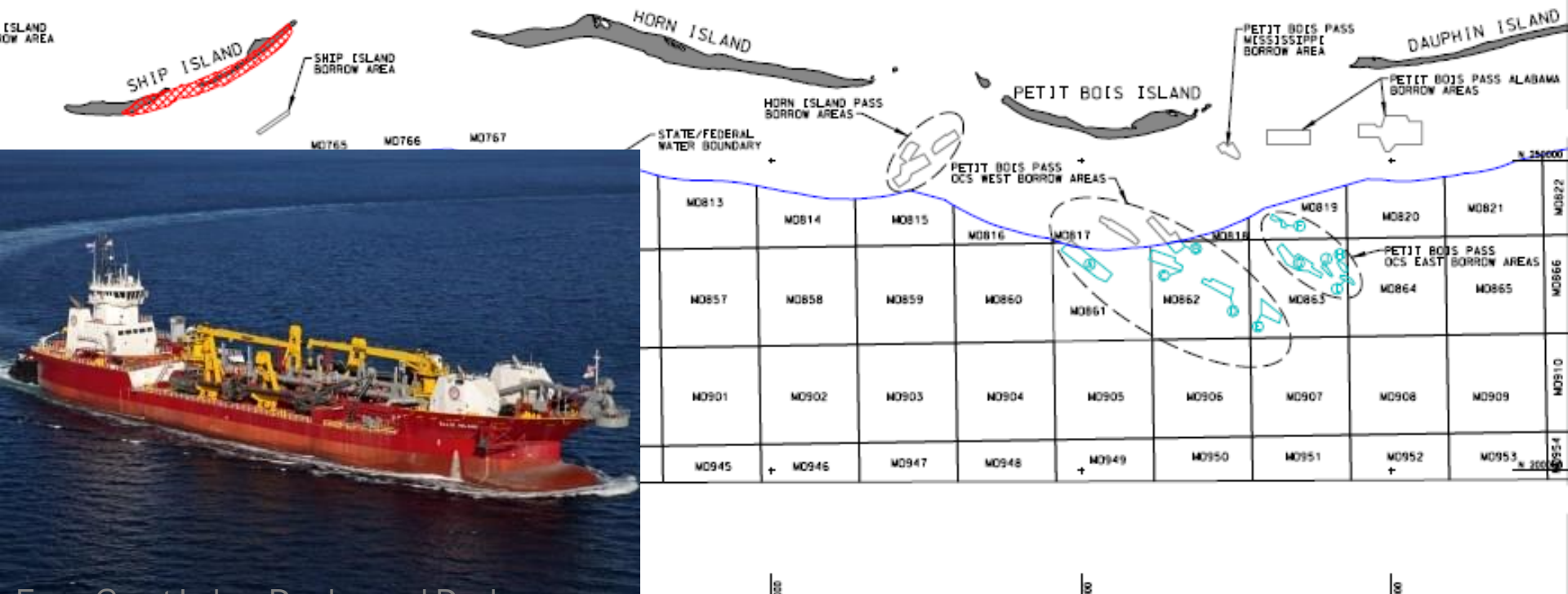
- Draft EA in review by BOEM
- Complexities and cost increases related to use conflicts
- Lease expected Spring 2018
  - Dependent on issuance of USACE 10/404 permit
- Construction funding requested through NFWF Gulf Environmental Benefit Fund by CPRA







- **USACE Mobile District**
- **Largest agreement issued in program history: 19.6 mcy**
- **GLDD contractor on Phase 1 mobilized, construction start imminent**
- **1<sup>st</sup> job for new dredge *Ellis Island*, at 15,000 cy largest hopper in US fleet**





- Amending 2015 Lease for time extension and increased volume (to 1.7 mcy) due to Hurricane Irma impacts.
- Lease sent to Collier Co. for Signature, tomorrow?

