

NY Bight Call for Information and Nominations—Fisheries Meeting | May 8, 2018 | Long Branch, NJ

Recreational & Commercial Fishing in the New York Bight

Brian Hooker, *Marine Biologist*

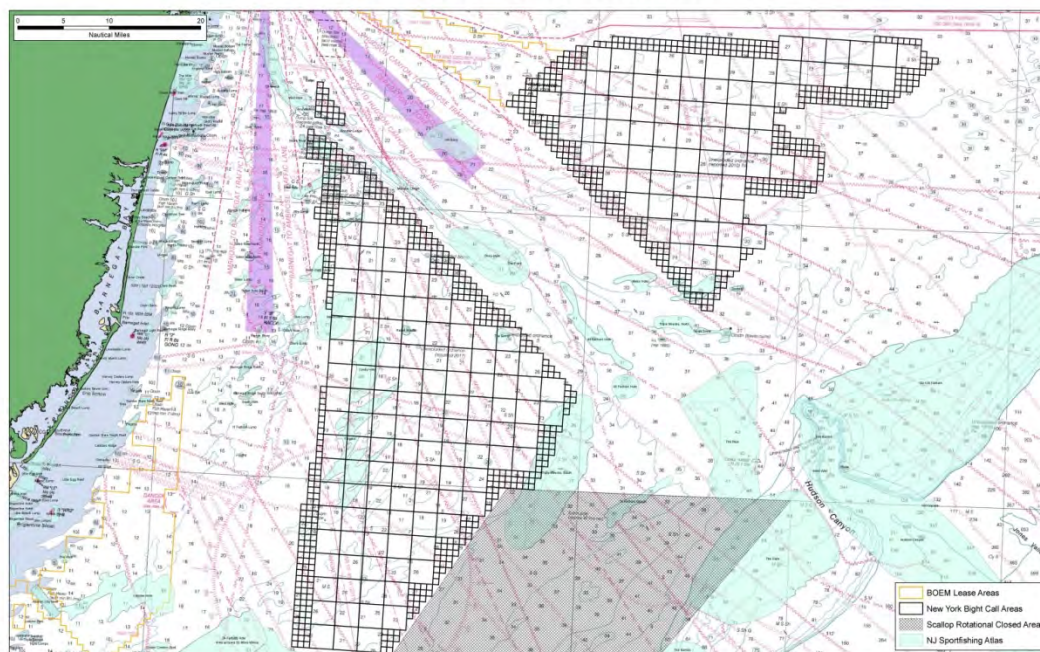
Bureau of Ocean Energy Management | Department of the Interior



Recreational Fishing in NY Bight

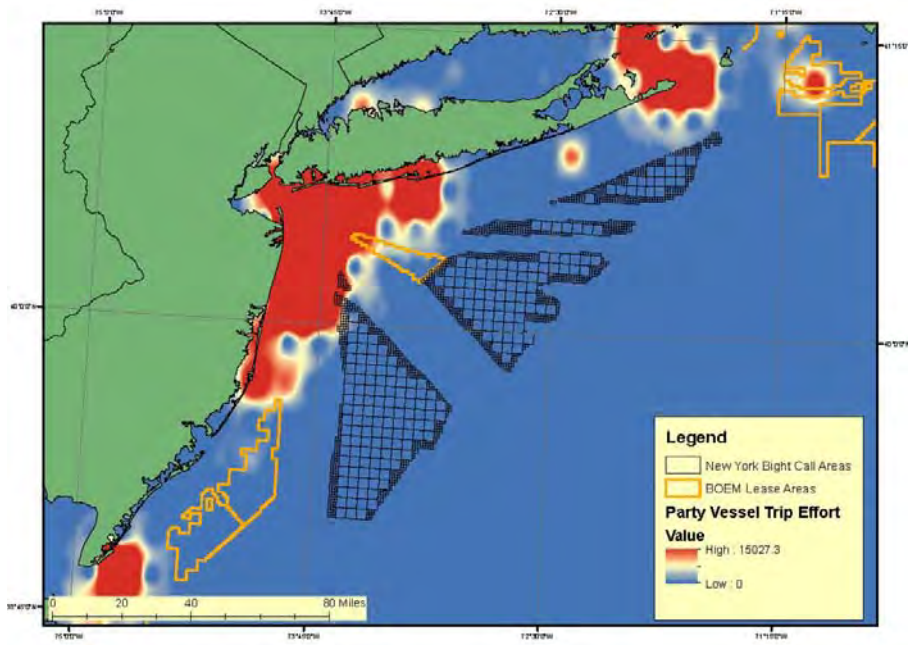
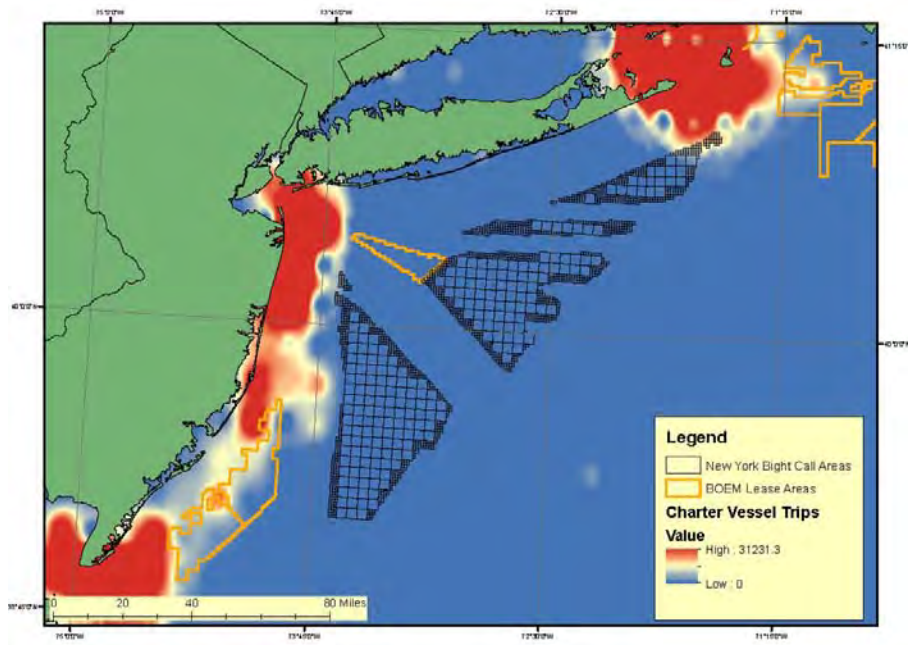
- Robust recreational fishing
 - ~8.6 million trips from NJ & NY
- Target species
 - Black Sea Bass
 - Summer Flounder
 - Scup
 - Bluefish
- Need additional information regarding tournament fishing

New Jersey Sportfishing Areas



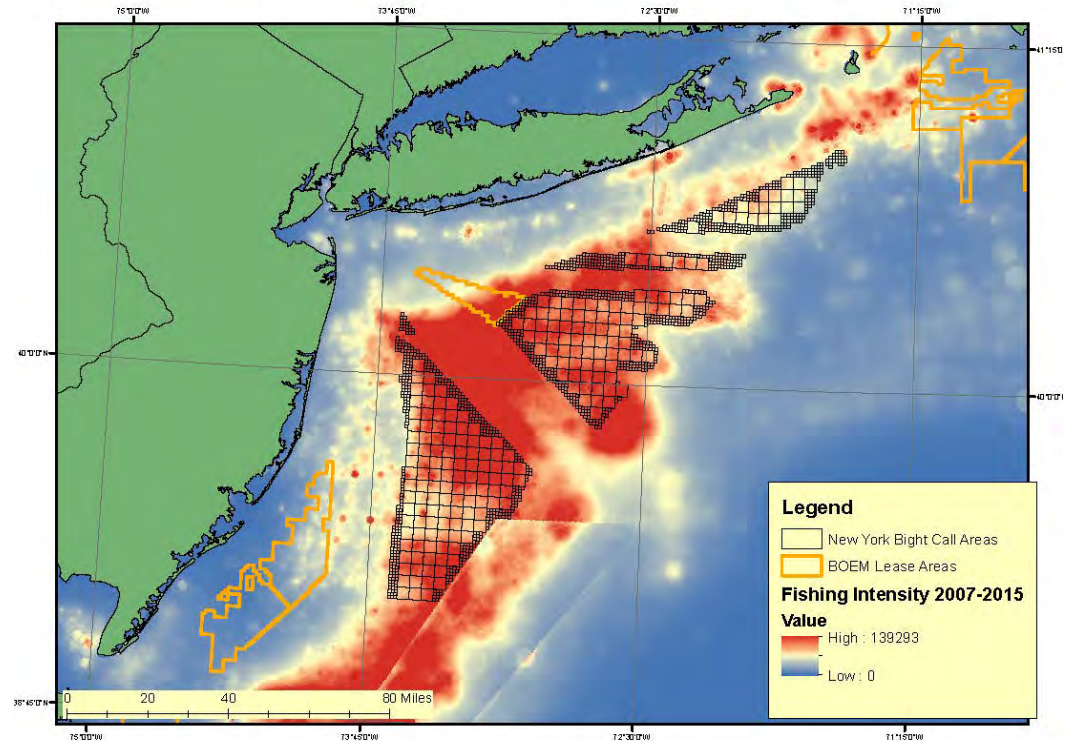
Fisheries Characterization: Federal Permit Data

Charter and Party Trips (VTR 2001-2010)



Fisheries Characterization: Federal Permit Data

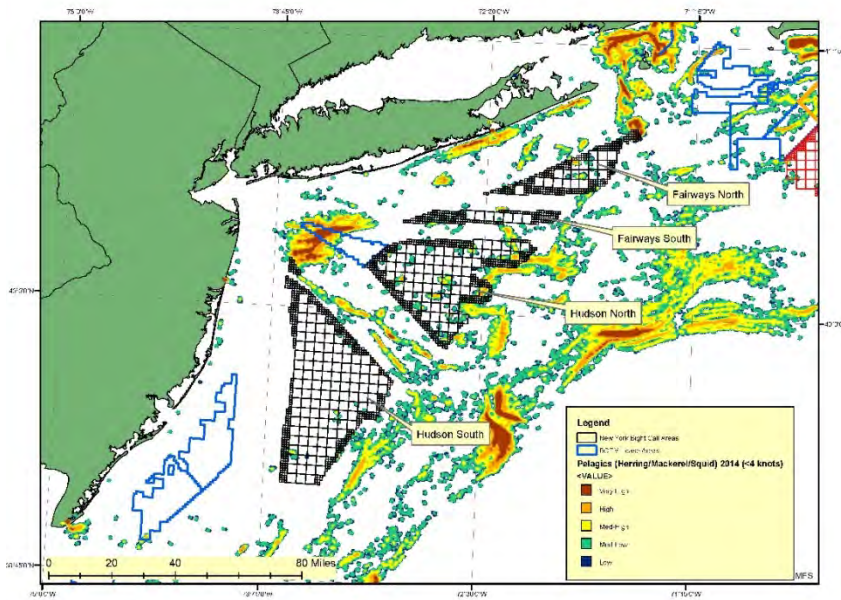
- Important economic sector
- ~**\$68 million** in revenue annually – all call areas
- **Hudson South** – ~24% of total east coast revenue
- **Hudson North** – ~20% of total east coast revenue



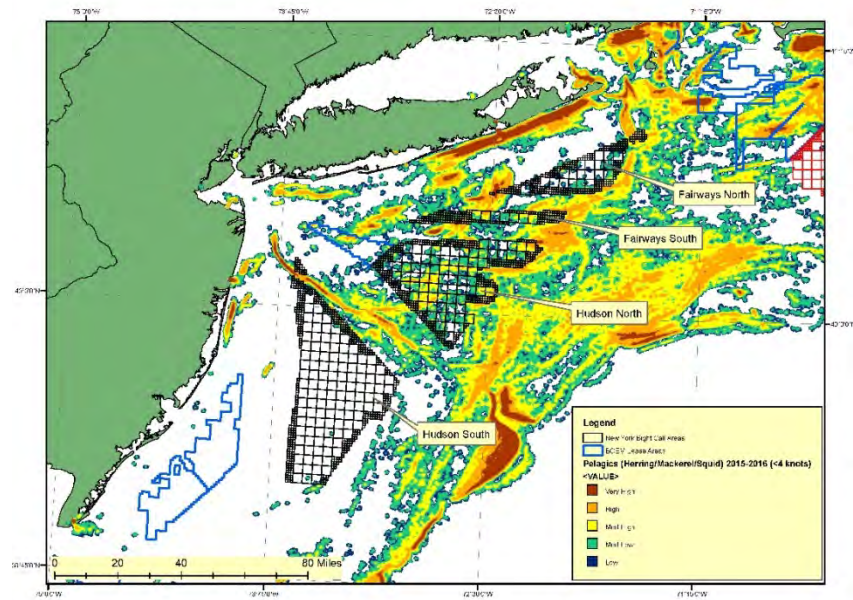
Fisheries Characterization: Federal VMS Data

Some Fisheries (Squid and Mackerel) Are **Highly Variable**

2014



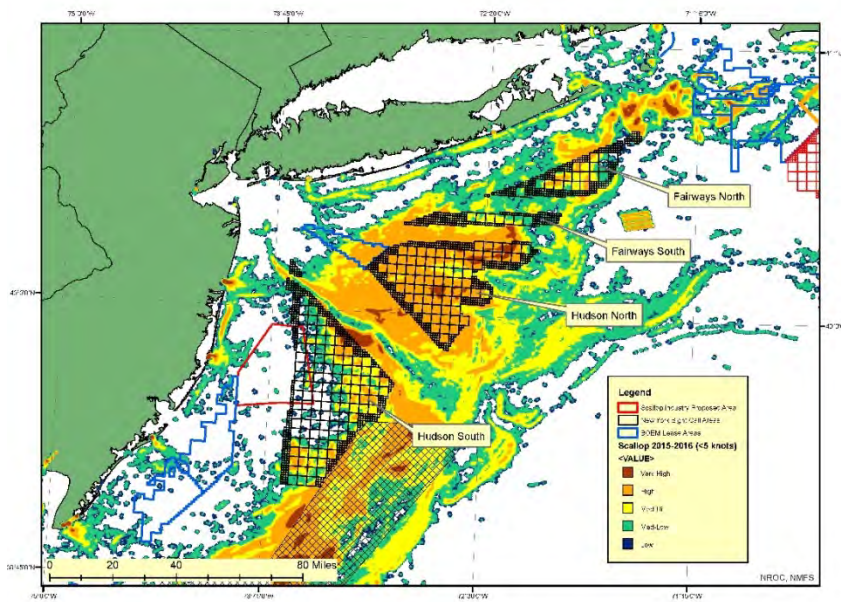
2015-2016



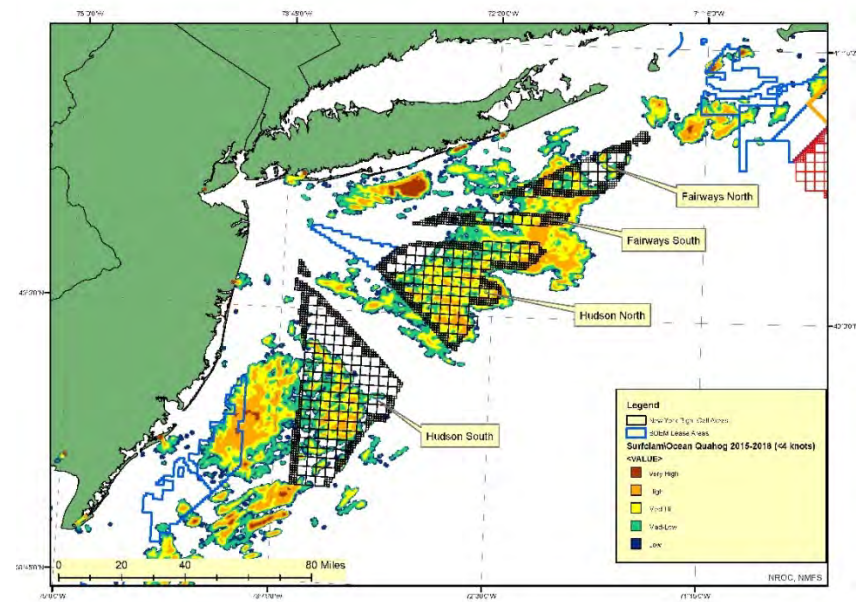
Fisheries Characterization: Federal VMS Data

Some Fisheries (Scallop and Clams in HN) Have **Limited Overlap Between Each Other**

Sea Scallop



Surfclam & Ocean Quahog



Fisheries Characterization: Fairways North and South

High-Usage Fisheries – Percent of Coastwide Landed Value, 2007-2015

| FMP | Fairways North | | Fairways South | |
|---------------------|----------------|--------------|----------------|--------------|
| | Average | High | Average | High |
| Ocean Quahog | 2.71% | 3.78% (2009) | 1.85% | 3.30% (2015) |
| Monkfish | 1.86% | 2.95% (2012) | 0.20% | 0.21% (2015) |
| Skate | 0.72% | 1.12% (2014) | 0.05% | 0.06% (2014) |
| Scallop | 0.57% | 1.74% (2014) | 0.62% | 1.40% (2012) |
| Summer Flounder | 0.54% | 0.91% (2015) | 0.24% | 0.40% (2015) |
| Squid, Mack, Butter | 0.29% | 0.72% (2007) | 0.20% | 0.55% (2009) |

Fisheries Characterization: Hudson North and South

High-Usage Fisheries – Percent of Coastwide Landed Value 2007-2015

| FMP | Hudson North | | Hudson South | |
|---------------------|--------------|---------------|--------------|---------------|
| | Average | High | Average | High |
| Surfclam/Quahog | 9.26% | 13.87% (2012) | 7.99% | 13.07% (2009) |
| Monkfish | 1.94% | 2.08% (2007) | 1.92% | 2.75% (2007) |
| Skate | 0.20% | 0.35% (2010) | 0.24% | 0.38% (2010) |
| Scallop | 3.83% | 9.89% (2014) | 6.68% | 15.15% (2010) |
| Summer Flounder | 1.34% | 3.10% (2015) | 1.46% | 1.93% (2014) |
| Squid, Mack, Butter | 1.44% | 2.73% (2009) | 1.06% | 2.17% (2008) |

Feedback to Date

- BOEM is seeking information from the fishing community regarding how the areas are used as a fishery and how offshore wind **may impact fishing activities**, including information regarding potential **mitigation and best management practices**.
- Held open houses at April MAFMC and NEFMC meetings
 - Scallop fishermen prefer western side of Hudson North
 - Mackerel and squid also prefer Hudson North
 - Important ocean quahog and surfclam grounds in call areas
 - NY Master Plan areas accommodated some NY-based fishermen
 - Importance of transit routes in planning
 - Mitigation options – remove hangs to allow fuller use of a leased area?
 - Concern about cumulative effects
- Fishery Management Councils and NMFS working on additional data

Questions?



Brian Hooker
brian.hooker@boem.gov
703-787-1634

5/31/2018

Bureau of Ocean Energy Management / Department of Interior

10