



**BOEM** Bureau of  
Ocean Energy Management

# Environmental Justice Roundtable Convening on Offshore Wind near New York and New Jersey

July 21, 2022

11:00 a.m. - 1:00 p.m. ET

Laura Mansfield, Sara Parkison, Paige Foley, Holly Fowler  
NYB EJ Convening Series

# Zoom Webinar Instructions – Technical Assistance

- If you encounter technical difficulties during the meeting, please email Elizabeth Anton at [eanton@kearnswest.com](mailto:eanton@kearnswest.com) or message Elizabeth Anton (Host) using Zoom chat.
- If you are participating by phone, raise your hand for help by **dialing \*9**.



# Process Guidelines

- “Honor” the agenda.
- Participate actively and respectfully.
- Speak in order. Facilitator will mind the queue.
- When you speak, provide your name and affiliation, and speak clearly into the mic/phone.
- Participants are muted when they enter the meeting, but can adjust their audio and video functions. Please mute your audio when not speaking.
- Use the “chatbox” function to ask questions, make comments, or receive technical assistance.
- Use the “raise hand” function to join the discussion queue.



# Agenda

- Introductions
- Welcome from BOEM Director Lefton
- **Presentation on BOEM** and ongoing equity-related efforts, and summary of themes heard in EJ coordination meetings
- **Presentation and Discussion on NY/NJ Engagement Strategy** – *discuss and receive feedback on methods to advance meaningful engagement with EJ communities*
- **Discussion on NYB PEIS Scoping Phase** – *discuss potential impacts from offshore wind development on EJ communities in New York and New Jersey and discuss the upcoming public comment opportunity*
- Discuss Next Steps and Adjourn





## BOEM Introductions

**Participant Introductions** – please insert your name, organization, and affiliation in the chat box



# Welcome

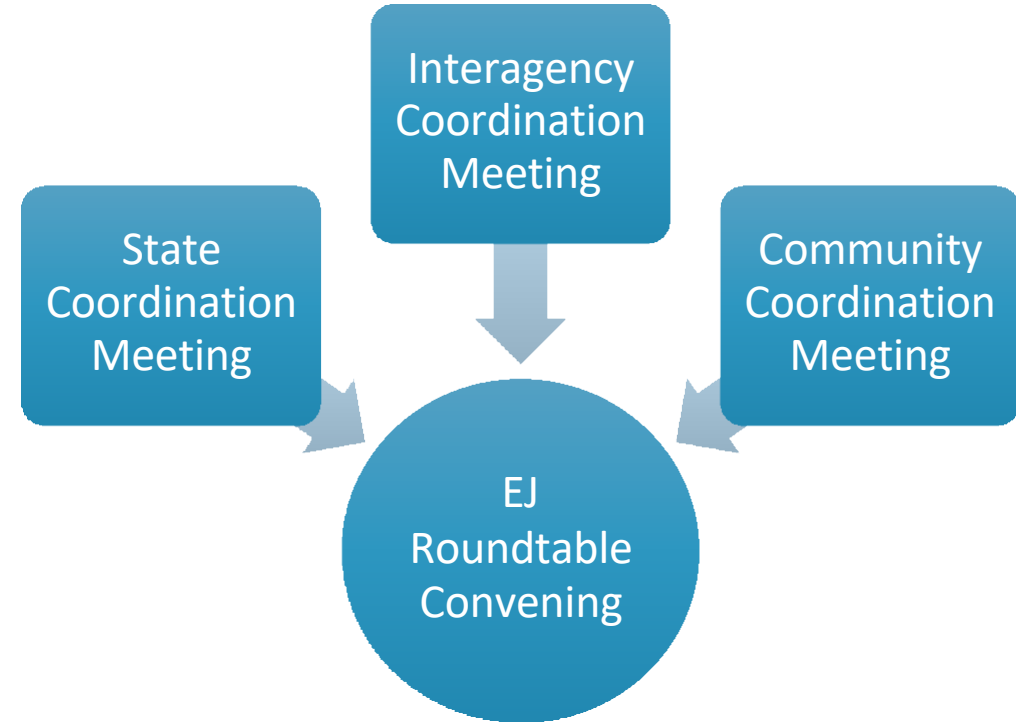
## Welcome, BOEM Director Lefton



When you think of successful EJ community engagement, what is one word that comes to mind?

# Overarching goals of EJ Convening Series

- Further **develop network** of organizations, communities, and individuals to engage.
- Learn how to **conduct outreach and engagement** in the region to advance equitable participation.
- Understand the **equity-related efforts of partners** to identify **overlapping opportunities**.
- Improve **community access to and input in** environmental reviews processes.
- **Develop a model** for meaningful community engagement that can be replicated.





# Objectives of Meeting Today

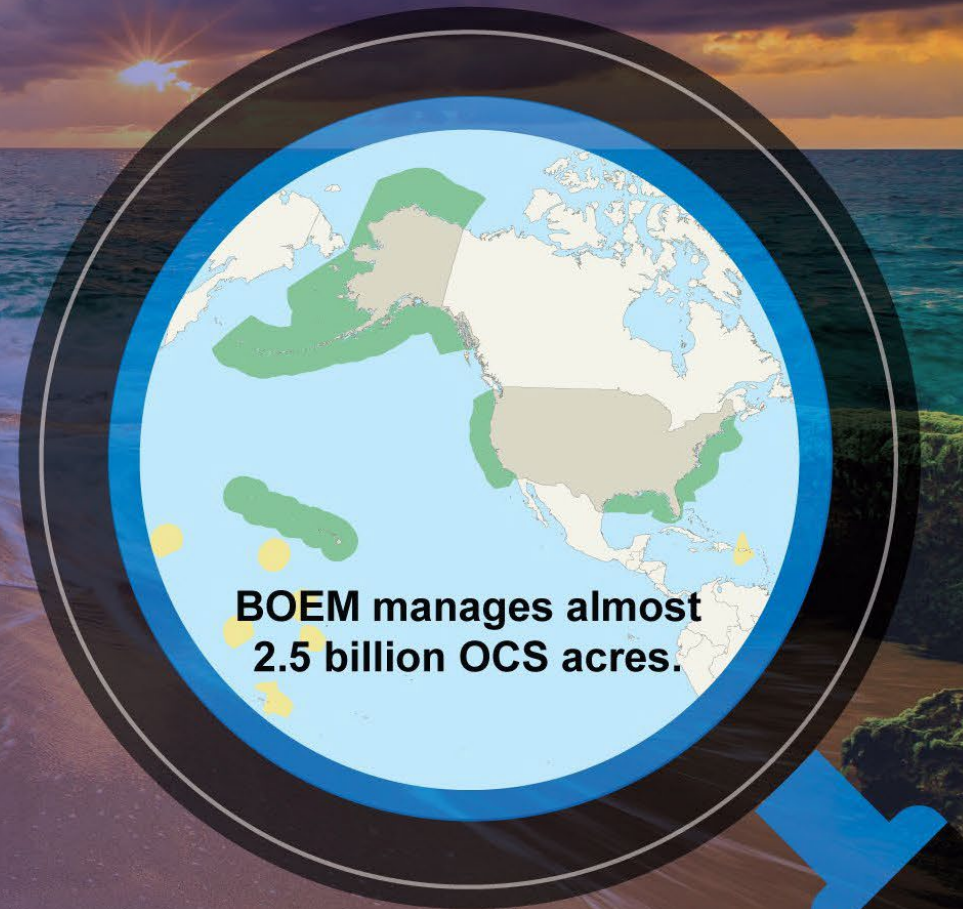
1. Share information gathered in coordination meetings with state partners, federal agencies, and community members.
2. Identify issues specific to EJ communities to address through BOEM's draft New York Bight (NYB) Programmatic Environmental Impact Statement (PEIS).
3. Refine a process for coordination and engagement on EJ issues in the NY/NJ region.





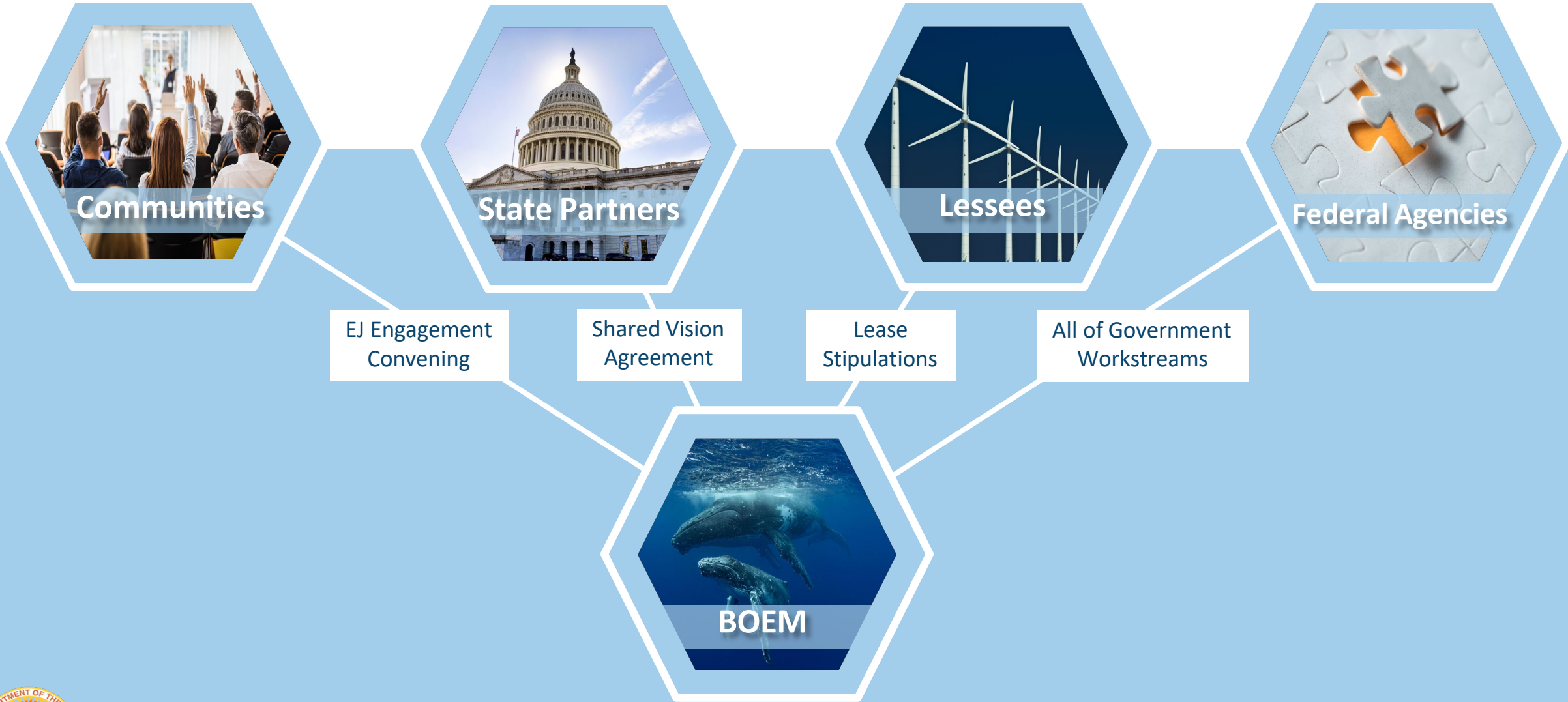
# BOEM Mission

Manage development of U.S. Outer Continental Shelf energy and mineral resources in an environmentally and economically responsible way.





# Collaborations to Advance Equity Efforts in NY/NJ and Beyond



# Coordination Meeting Review – What we heard



## Information Sharing

- Education about PEIS and potential impacts to communities
- Avoid industry lingo
- Content should be inclusive of all participants
- Create basic information that describes “what will happen.”
- Understand current level of trust and develop strategies



## Capacity Building

- Build engagement capacity
- Compensate and hire from the communities wherever possible
- Hire for positions on identifying and working with EJ populations
- Suggestions and guidance on community identification practices



## Outreach and Engagement

- Schedule regular outreach and engagement
- Meet in communities, boots on the ground to build relationships
- Ensure communities have seat at the table
- Work with lessees on coordinated engagement requirement
- Target outreach to local/regional level



## Coordination

- Coordinate EJ engagement efforts
- Partner with existing state efforts
- Create EJ education for gov’t peers
- Elevate EJ issues and share potential benefits
- Create interagency partnerships
- Identify best practices for engagement.



# Miro Board Homework Overview: Collaborative Graphic of Participant Workstreams





# NY/NJ Engagement Strategy Discussion



# Overview

1. Review of Shared Vision and Lease Stipulations
2. Options for coordinated iterative engagement through PEIS development
3. Explore community capacity-building and partnerships



# BOEM – New York – New Jersey Shared Vision

## Collaboration promotes:

- Investment in domestic supply chain
- Delivery of benefits and opportunities to underserved, disadvantaged, and overburdened communities
- Maximizing positive impacts
- Minimizing or eliminating potential negative impacts to communities

## BOEM Commitments:

- Improving the permitting process for future offshore wind energy projects, which includes revising BOEM's **guidance to industry, improving outreach, and increasing information accessibility**
- Adopting **innovative lease terms** and stipulations for the New York Bight Lease Sale that further the goals of the OCS Lands Act



# NYB Lease Stipulations Requirements

Advancing meaningful engagement between lessees and underserved communities and other ocean users.

1. Encourages early engagement
2. Requires lessees to provide **semi-annual reports** to BOEM on engagement activities
3. Requires coordination across lessees on engagement activities
4. Requires communications plans for fisheries, Tribes, and agencies

The New York Bight lease is the first to incorporate elements of engagement with underserved communities and other ocean users.





# Lease Stipulations – Progress reports

- Semi-annual reports to BOEM must include:
  - Description of planned engagements and communication of updates, and
  - Summary of how a project has been informed or altered after input.
- Lessees must seek to coordinate with each other on engagement activities





# Collaborative Engagement Format Options

## BOEM-led, Partners Collaborate

- New, regular engagement meeting dedicated to discussing EJ and offshore wind in region.
- Agenda circulated in advance to participants (states, communities, agencies, lessees) to gather input on priority topics of discussion.
- Iterative, OSW-focused, regularly held, and tied to PEIS development process.
- Frequency of meeting to be determined (monthly, bimonthly, quarterly, etc.).

## Partner-led, BOEM Attaches

- BOEM refrains from adding additional, EJ-focused engagement.
- Participates in existing meetings carried out by states and other federal agencies.
- Relies on existing relationships, reduces complexity and meeting fatigue.
- Would not meet intent of lessee coordinated engagement lease stipulation.



When poll is active, respond at [pollev.com/kwpoll1](https://pollev.com/kwpoll1)

Text **KWPOLL1** to **22333** once to join

**Do you or your agency/organization have a dedicated, long-term capacity to participate in a regularly held, BOEM-led engagement meeting?**

Yes, high priority

Yes, but not long-term

Occasionally but low  
priority

No, not a priority

Maybe, not enough  
information

Not yet

# How frequently would BOEM-led meetings need to be held?

- Monthly
- Bimonthly
- Quarterly
- Biannually
- Other

**If BOEM were to attach to existing meetings, are there any ongoing, regular engagement meetings that would make sense to attach to?**

## Would coordinating lessee engagement through regular meetings held by BOEM be preferred?

Yes, it would be preferred

Maybe, with conditions

No, BOEM-led meetings are not preferred for lessee engagement

Not enough information



## How would you prefer to be engaged?

BOEM-led

Partner-led

No  
preference/unsure

Another format  
option

No meeting, status  
quo (public process)

# Exploring Engagement Capacity Building Partnerships

## EJ Strategy Group

Funding for group of community members nominated for year-long engagement service position

## Long-term CBO positions

Grants to support long-term positions dedicated to engagement within community organizations

## Discrete compensation

Compensation in exchange for discrete efforts provided in response to engagement events (\$/hr)

## Community liaison network

Create regional community liaison positions through existing efforts (e.g., Sea Grant)

## Student-led engagement

Stipends/Fellowships at higher education institutions for students to carryout local community engagement.

Others?



**Select your top one preference to explore further.**

EJ Strategy Group - Funding for group of community members nominated for year long engagement service position.

Long-term CBO positions - Grants to support long-term positions dedicated to engagement within community organizations.

Discrete compensation - Compensation in exchange for discrete efforts provided in response to engagement events? (\$/hr)

Community liaison network - Create regional community liaison positions through existing efforts (e.g., Sea Grant)

Student-led engagement - Stipends / Fellowships at higher education institutions for students to carry out local community engagement.

Other

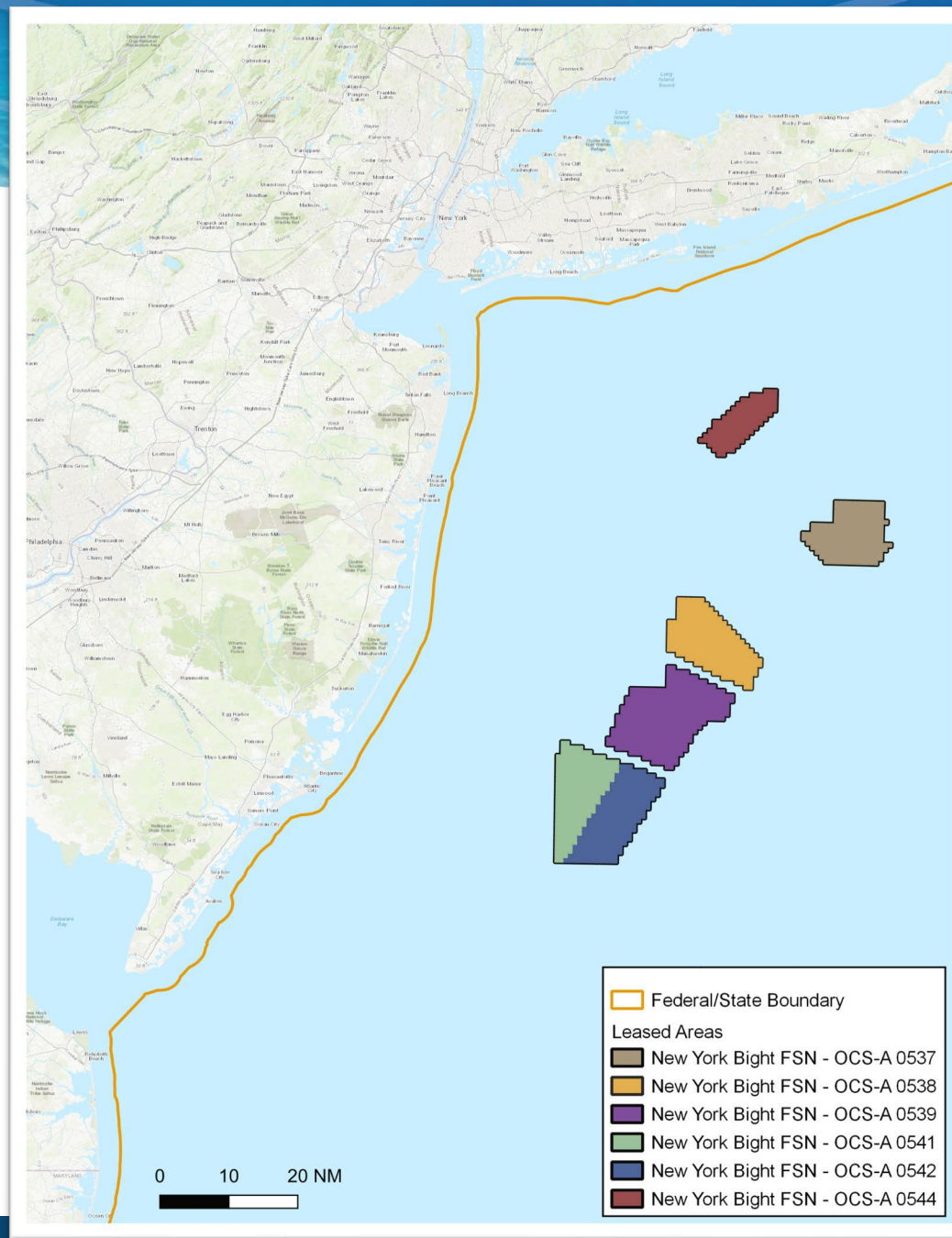
# Environmental Review for New York/New Jersey Offshore Wind Development





# New York/New Jersey Lease Areas

- **BOEM** is developing a Programmatic Environmental Impact Statement (PEIS) for the **New York / New Jersey lease areas**.
- **Lease Sale:** February 23, 2022
- **Lease Execution:** May 1, 2022
- **6 lease areas:**
  - OCS-A-0537 - OW Ocean Winds East, LLC
  - OCS-A-0538 - Attentive Energy LLC
  - OCS-A-0539 - Bight Wind Holdings, LLC
  - OCS-A-0541 - Atlantic Shores Offshore Wind Bight, LLC
  - OCS-A-0542 - Invenergy Wind Offshore LLC
  - OCS-A-0544 - Vineyard Mid-Atlantic LLC





# Objectives of the NY Bight PEIS



Analyze regional affected environment and environmental consequences



Conduct a focused, regional cumulative analysis



Establish a framework for tiering of project-specific environmental analyses



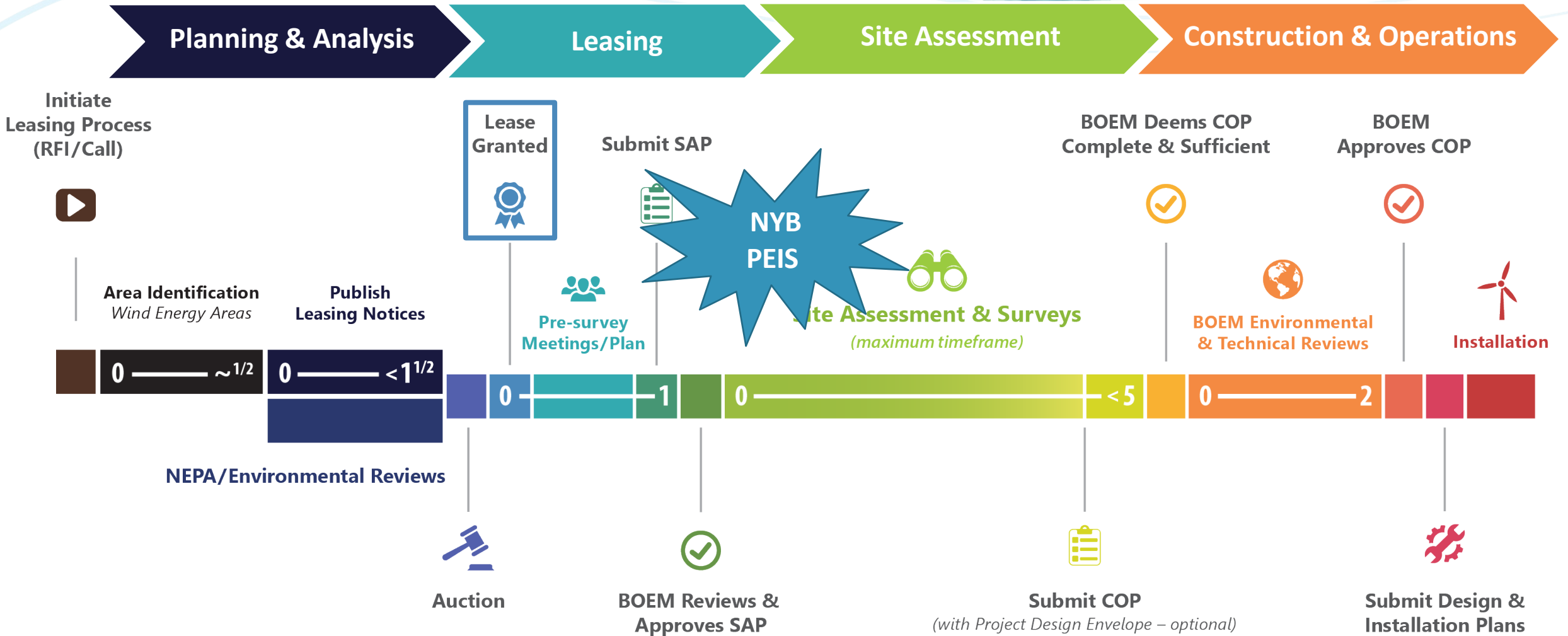
Identify, analyze, and adopt (if appropriate) programmatic avoidance, minimization, mitigation, and monitoring measures



Provide predictability and consistency to cooperating agencies, partners, and developers



# Stages of Leasing and Development – Environmental Review Points



# NYB PEIS Timeline

February  
23, 2022

July 15,  
2022

July 21,  
2022

July 28 –  
Aug 4, 2022

Aug 15,  
2022

September  
2023

- NYB Lease Sale

- NOI Published

- EJ Roundtable  
Convening

- Virtual Public  
Meetings

- NOI Comments  
Due

- Draft PEIS  
Published



# Notice of Intent (NOI) to Prepare a PEIS

Published in the *Federal Register* on July 15, 2022



[https://www.regulations.gov/document/BOEM\\_FRDOC\\_0001-0593](https://www.regulations.gov/document/BOEM_FRDOC_0001-0593)



Docket Number: BOEM-2022-0034



Starts the PEIS process



Initiates 30-day public comment period, ending **August 15, 2022**



# Public Comments on the NOI

- Integral to NEPA reviews
- Local expertise and perspective guide environmental analysis = more informed decisions
- **Types of information BOEM is looking for:**
  - Significant **issues** to be analyzed in the PEIS
  - **Sources** of information to include in the PEIS
  - Data **gaps** and information needs
  - Reasonable **alternatives**
- **Virtual Meeting Room**
  - <https://www.boem.gov/renewable-energy/state-activities/new-york-bight-peis-virtual-meetings>

Meeting Date	Time
July 28, 2022	5:00 PM ET
August 2, 2022	5:00 PM ET
August 4, 2022	1:00 PM ET



# Tiering Approach

## New York Bight Programmatic EIS (Tier 1)

- Overall **regional analysis** of potential impacts of a representative project
- Identify, analyze, and adopt, where appropriate, programmatic avoidance, minimization, mitigation, and monitoring measures
- Robust cumulative analysis



## COP-specific NEPA (Tier 2)

- Incorporate the analysis done in the Programmatic EIS by reference where applicable
- Focus on **site-specific impacts** of approving a particular COP
- Additional avoidance, minimization, mitigation, and monitoring measures
- Approve, approve with modifications, or disapprove the COP



# Potential impacts to EJ communities

## Potential public health and safety impacts

- e.g., air quality, noise, lighting

## Changes in the local economy

- e.g., tourism

## Impacts to jobs and income

- e.g., revenue effects

## Changes in spatial access

- e.g., land use, access to places of historical/cultural significance

## Changes in resource access

- e.g., fishing living and non-living resources, subsistence

**Note:**  
These are preliminary.  
Are there other  
dynamics or concerns  
we should analyze?





# Miro Board Activity: Identifying potential regional impacts and affected areas



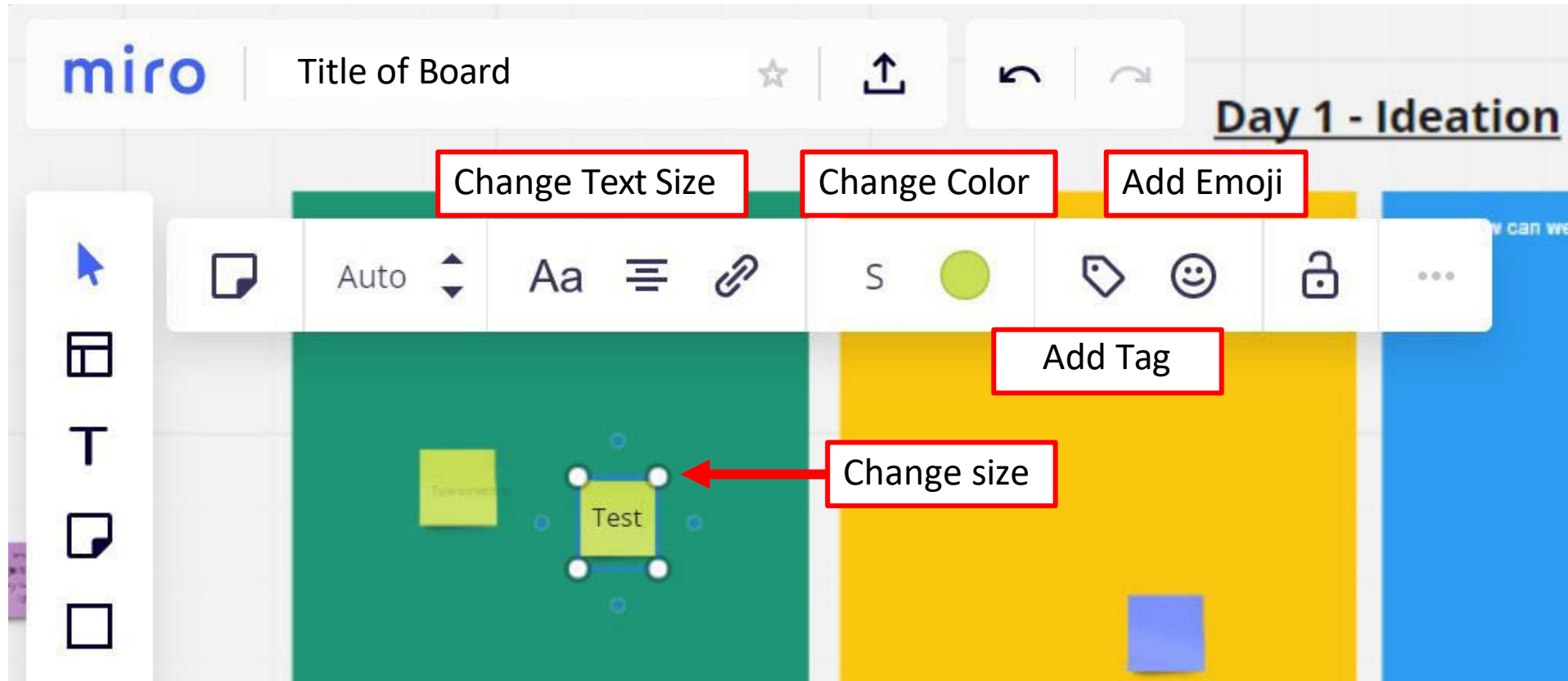
# Common Miro Board Functions

The image shows a Miro board interface with several key features highlighted by red boxes and labels:

- Undo / Redo Action:** Located in the top toolbar, showing the undo and redo icons.
- Hide Other Cursors:** Located in the top toolbar, showing the cursor icon.
- Select:** Located in the left sidebar, showing the mouse cursor icon.
- Add Text:** Located in the left sidebar, showing the text icon.
- Add Sticky Note:** Located in the left sidebar, showing the sticky note icon.
- Connect Sticky Notes:** Located in the left sidebar, showing the line icon.
- Comment:** Located in the left sidebar, showing the comment icon.
- Map to move around. Zoom In / Zoom Out:** Located in the bottom right corner, showing the map view and zoom controls.
- Drag & Drop Sticky Notes:** Located at the bottom center, showing a row of colorful sticky notes.

The board itself is titled "Day 1 - Ideation" and contains four main sections: "What worked well?" (green), "What is missing / could work better?" (yellow), "How can we improve communications?" (blue), and "Other topics" (dark grey). Each section contains several sticky notes.

# Sticky Note Toolbar



To add text on the sticky note, double click. You will see a toolbar appear to change size of text, color, or add an emoji, such as a thumbs up to agree with a comment.

# Arrow Function & Toolbar

The image shows a software interface with a toolbar on the left and a configuration menu in the center. The toolbar includes icons for selection, erasing, text, sticky notes, shapes, arrows, and alignment. The 'Arrow Function' icon is highlighted with a red box. A configuration menu is open, showing options for 'None', 'Type', '+T', and a lock icon. The menu also displays various arrow styles: solid, dashed, and dotted lines, as well as curved and zigzag lines. A red box highlights the 'Arrow Function' text in the toolbar. Another red box highlights the 'Change weight, line shape, color' text in the configuration menu. A third red box highlights the 'Connection points will be highlighted' text in the configuration menu. A red circle highlights a connection point on a line in the configuration menu, and another red circle highlights a connection point on a line in the main interface.

None ↺ → Type [Color] +T [Lock] ⋮

Change weight, line shape, color

Arrow Function

Connection points will be highlighted

# Contact Information

Laura Mansfield | Social Scientist

[laura.mansfield@boem.gov](mailto:laura.mansfield@boem.gov)

Sara Parkison | Engagement Advisor for Underserved Communities and Offshore Wind Deployment

[sara.parkison@boem.gov](mailto:sara.parkison@boem.gov)





**Thank you!**

**BOEM**

Bureau of Ocean Energy  
Management

[BOEM.gov](http://BOEM.gov)

