

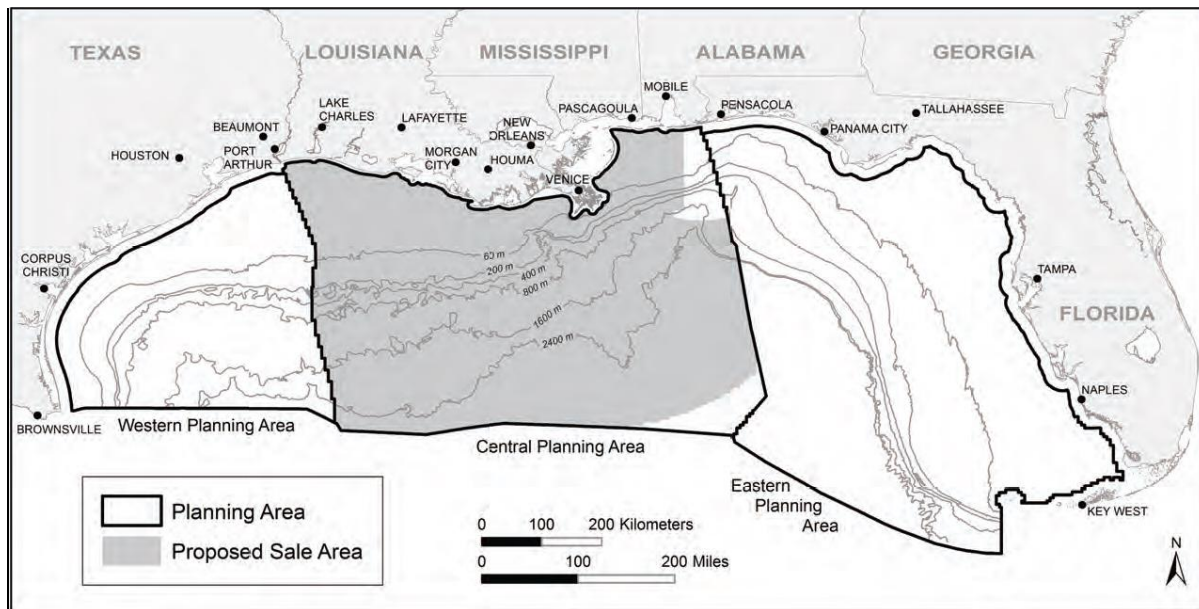
# U.S. Department of the Interior Bureau of Ocean Energy Management Gulf of Mexico OCS Region

## SPECIAL INFORMATION

September 2016

### BOEM Issues a Notice of Availability of the Final Supplemental Environmental Impact Statement for Proposed Gulf of Mexico OCS Oil and Gas Central Planning Area Lease Sale 247

The Bureau of Ocean Energy Management (BOEM) announces the availability of the Final Supplemental Environmental Impact Statement (EIS) for proposed Central Planning Area (CPA) Lease Sale 247. Proposed oil and gas CPA Lease Sale 247 is tentatively scheduled to be held in March 2017 under the *Proposed Final Outer Continental Shelf Oil & Gas Leasing Program: 2012-2017*.



This Supplemental EIS updates the analyses for the CPA since publication of the following EISs:

- *Gulf of Mexico OCS Oil and Gas Lease Sales: 2012-2017; Western Planning Area Lease Sales 229, 233, 238, 246, and 248; Central Planning Area Lease Sales 227, 231, 235, 241, and 247, Final Environmental Impact Statement (2012-2017 WPA/CPA Multisale EIS; OCS EIS/EA BOEM 2012-019);*
- *Gulf of Mexico OCS Oil and Gas Lease Sales: 2013-2014; Western Planning Area Lease Sale 233; Central Planning Area Lease Sale 231, Final Supplemental Environmental Impact Statement (WPA 233/CPA 231 Supplemental EIS; OCS EIS/EA BOEM 2013-0118);*
- *Gulf of Mexico OCS Oil and Gas Lease Sales: 2015-2017; Central Planning Area Lease Sales 235, 241, and 247, Final Supplemental Environmental Impact Statement (CPA 235/241/247 Supplemental EIS; OCS EIS/EA BOEM 2014-655); and*
- *Gulf of Mexico OCS Oil and Gas Lease Sales: 2016 and 2017; Central Planning Area Lease Sales 241 and 247; Eastern Planning Area Lease Sale 226, Final Supplemental Environmental Impact Statement (CPA 241/247 and EPA 226 Supplemental EIS; OCS EIS/EA BOEM 2015-033).*

BOEM is proposing to offer for oil and gas leasing approximately 47.39 million acres of the total 66.45 million acres in the CPA, with the exception of the whole and portions of blocks deferred by the Gulf of Mexico Security Act of 2006 and the blocks that are beyond the United States' Exclusive Economic Zone in the area known as the northern portion of the Eastern Gap.

The Final CPA 247 Supplemental EIS analyzes the baseline conditions and potential environmental effects of oil and natural gas leasing, exploration, development, and production in the CPA. Since publication of the Draft Supplemental EIS, BOEM has reviewed public comments received, provided responses, and revised the document to address substantive comments; conducted additional searches for new information; reviewed scientific journals and available scientific data and information from academic institutions and Federal, State, and local agencies; and/or interviewed personnel from academic institutions and Federal, State, and local agencies. BOEM has examined the potential impacts of routine activities, accidental events, and the proposed lease sale's incremental contribution to the cumulative impacts on environmental and socioeconomic resources. BOEM has also examined the potential impacts associated with a low-probability catastrophic event. The oil and gas resource estimates and scenario information for the Final CPA 247 Supplemental EIS are presented as a range that would encompass the oil and gas resources and activities estimated for the proposed CPA lease sale.

BOEM published in the August 17, 2015, *Federal Register*, a Notice of Intent (NOI) to prepare a Supplemental EIS. The NOI sought input on the scope of the Supplemental EIS for proposed CPA Lease Sale 247, which covers the proposed CPA oil and gas lease sale offshore the States of Louisiana, Mississippi, Alabama, and Florida.

BOEM published in the February 26, 2016, *Federal Register*, the Notice of Availability of the Draft Supplemental EIS for proposed CPA Lease Sale 247. The public review period was opened on February 26, 2016, and closed on April 11, 2016.

BOEM will be printing and distributing a very limited number of paper copies. In keeping with the Department of the Interior's mission of the protection of natural resources and to limit costs while ensuring the availability of the document to the public, BOEM will primarily distribute digital copies of the Final Supplemental EIS on compact discs. However, if you require a paper copy, BOEM will provide one upon request if copies are still available.

1. You may obtain a copy of the Final Supplemental EIS from the Bureau of Ocean Energy Management, Gulf of Mexico OCS Region, 1201 Elmwood Park Boulevard, New Orleans, Louisiana 70123-2394, Attention: Public Information Office (GM 335A), 1201 Elmwood Park Boulevard, New Orleans, Louisiana 70123-2394 (1-800-200-GULF).
2. You may download or view the Final Supplemental EIS on BOEM's website at <http://www.boem.gov/nepaprocess/>.

If you have questions, please contact Mr. Gary D. Goeke at 504-736-3233 or email him at [gary.goeke@boem.gov](mailto:gary.goeke@boem.gov).