



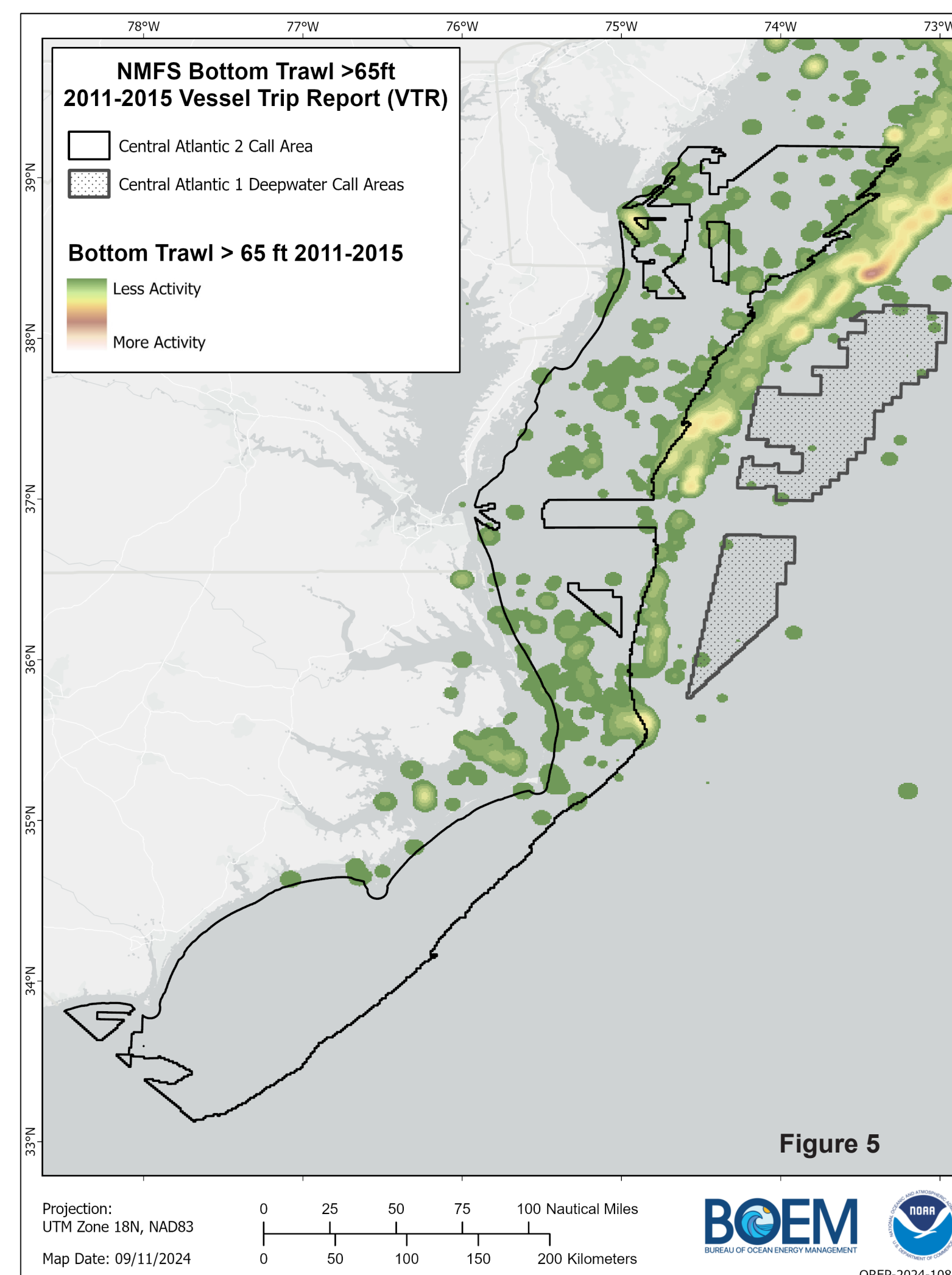
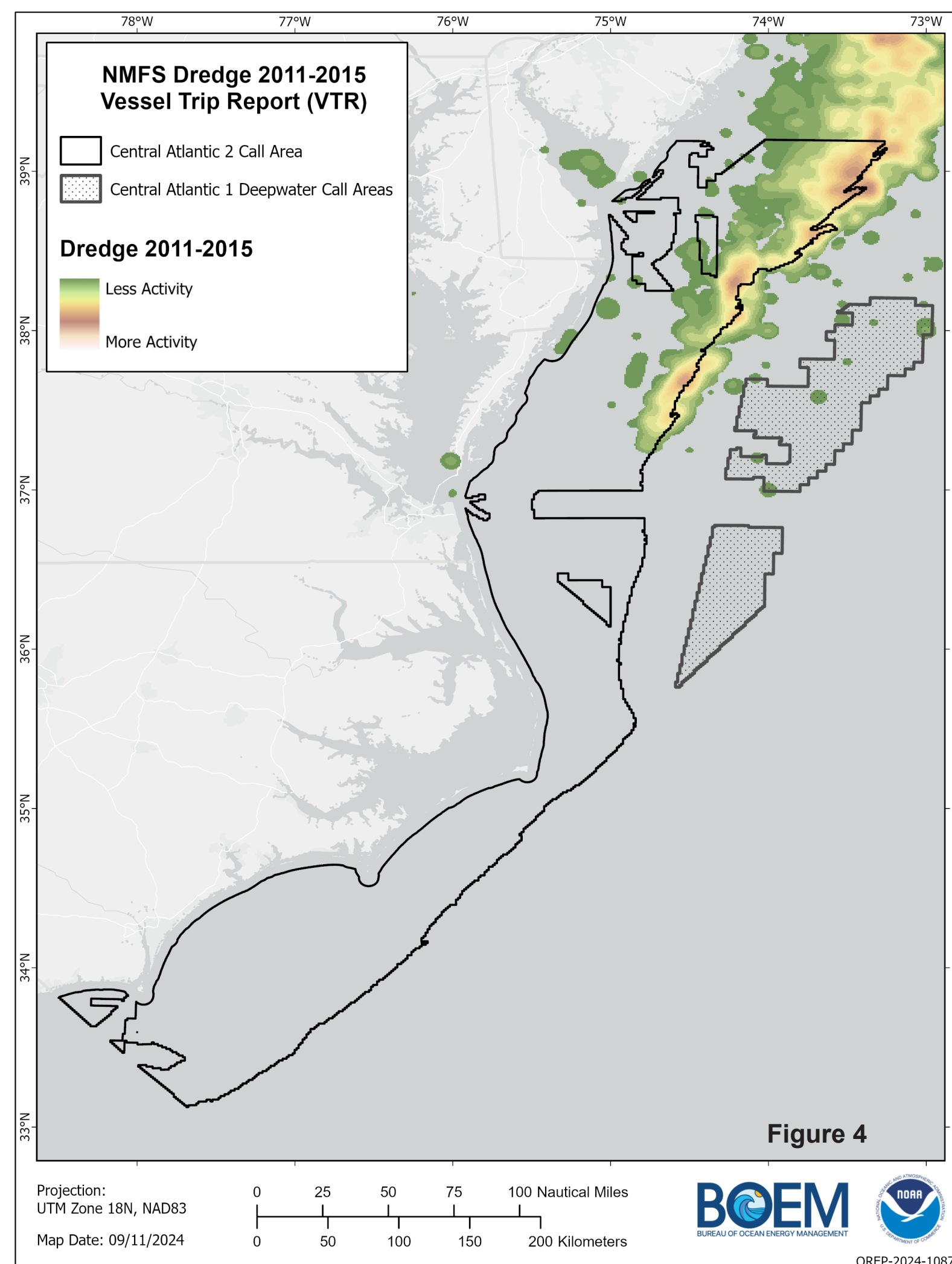
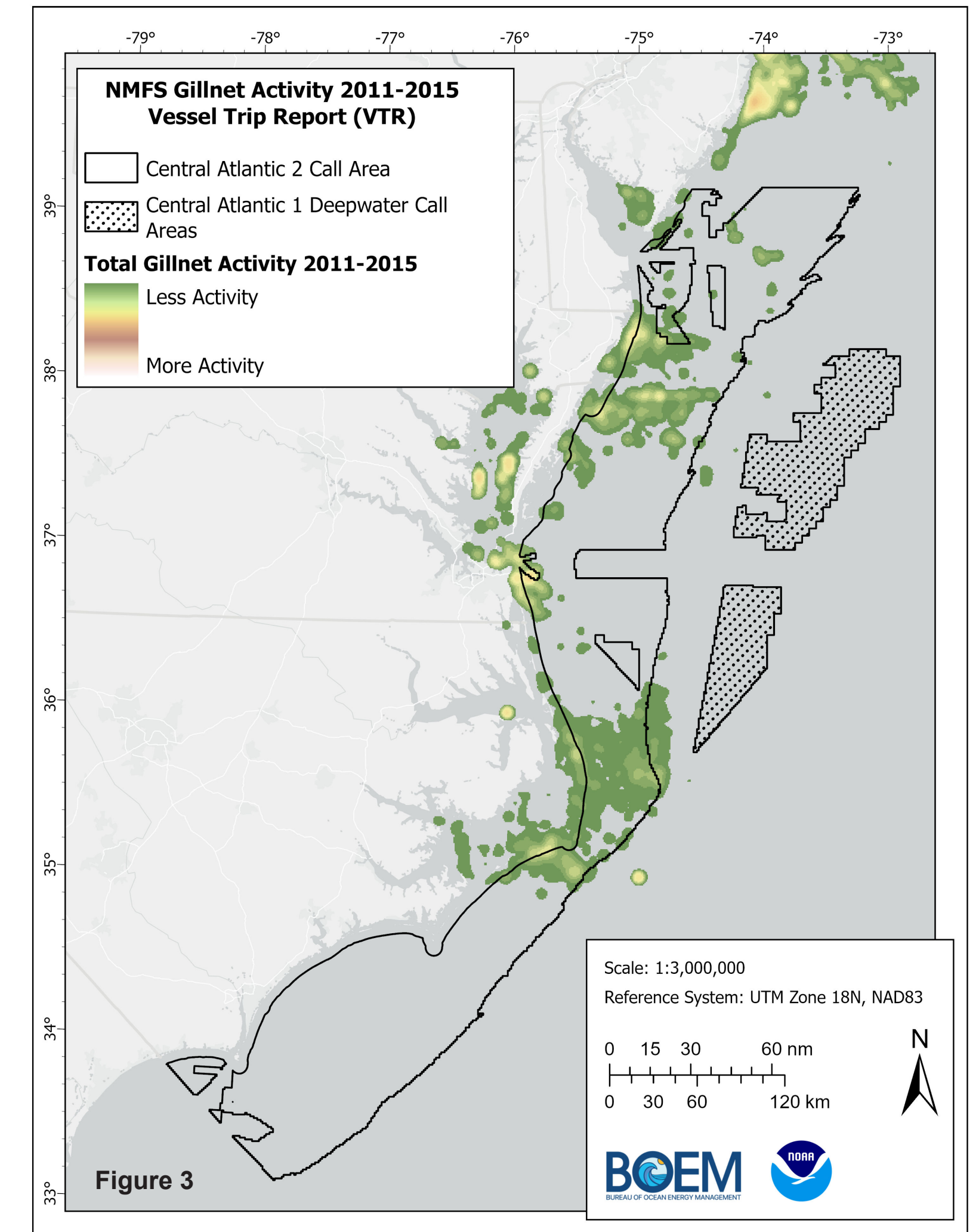
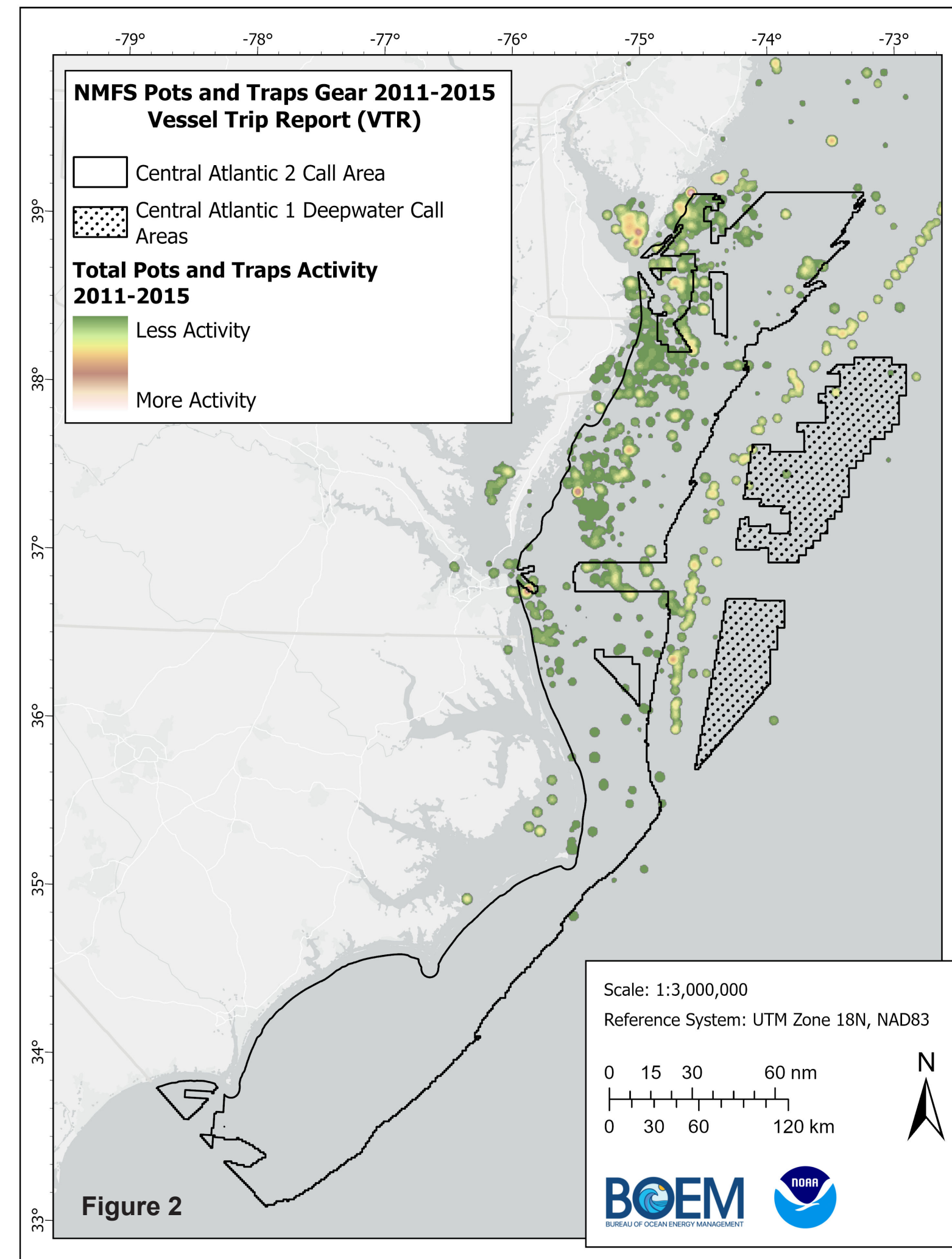
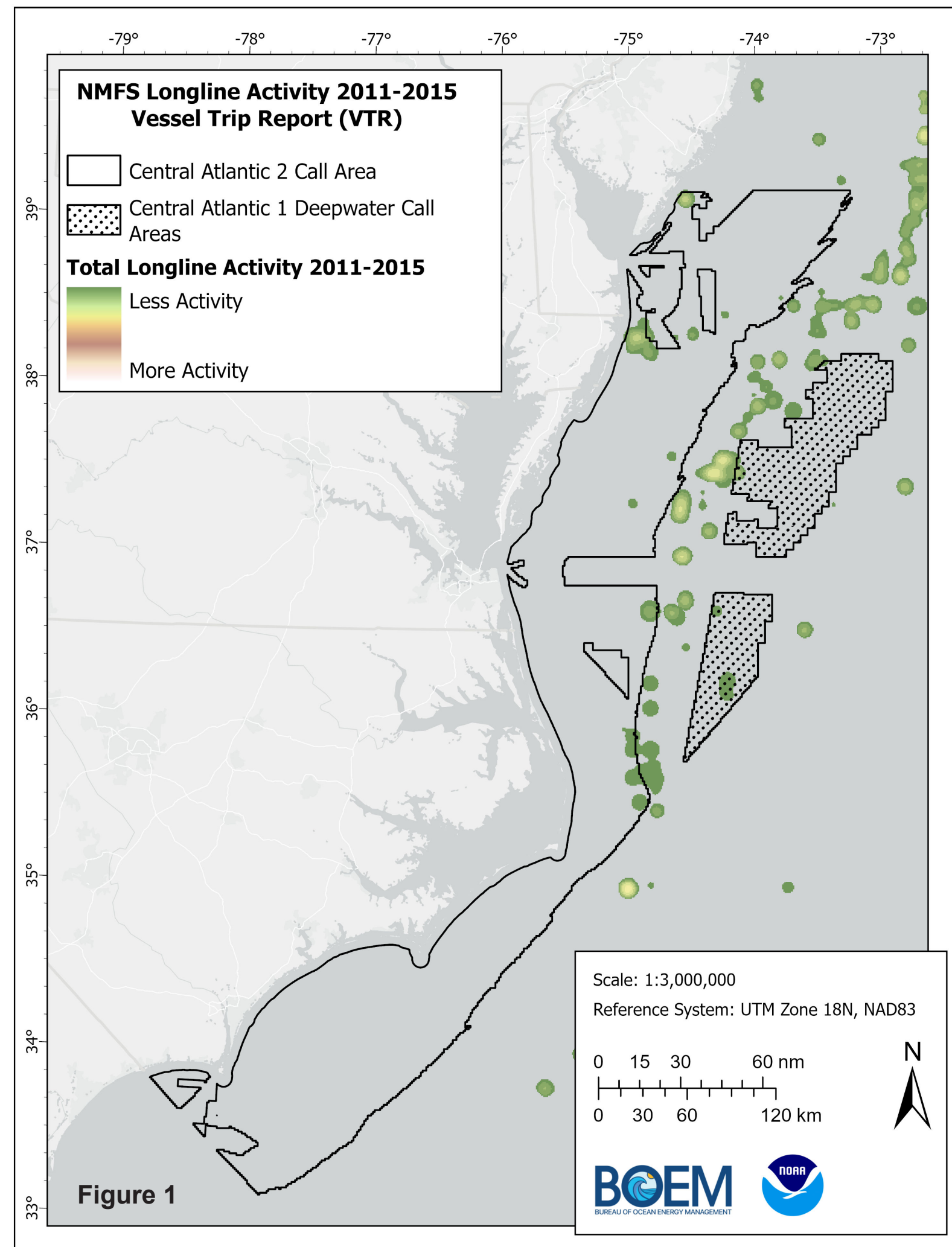
Bureau of
Ocean Energy
Management

Department
of the Interior

Mapping
Community
Use of
Fisheries
Resources

Central
Atlantic 2
Call Area
&
Central
Atlantic 1
Deepwater
Call Areas

For more
information,
please visit



Figures 1-5:

The Communities at Sea Vessel Trip Report (VTR) location point data as input to create density polygons representing visitation frequency ("fisherdays"). The data show total labor including crew time and the time spent in transit to and from fishing locations. They do not show other variables such as vessel value or number of pounds landed. The results can be interpreted as maps of "community presence." These figures show 2011-2015 data from all communities from **1) longline activity, 2) pots and traps fishing gear group, 3) gillnet activity, 4) dredging activity, and 5) bottom trawling activity at depths greater than 65ft** across the **Central Atlantic 2 Call Area and Central Atlantic 1, Deepwater Call Areas.**

Data Credit:

St. Martin, K. (2008). *Mapping Community Use of Fisheries Resources in the U.S. Northeast. Journal of Maps, 4(1), 38-49.*

<https://doi.org/10.4113/jom.2008.93>