

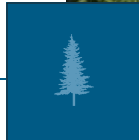
THE
CONSERVATION FUND

Mitigation Solutions: Compensatory Mitigation

Case Study: Indiana and Northern Long-Eared
Bat In-Lieu Fee Program

Greg Good, Mitigation Solutions Program Manager

July 15, 2024



PERFORMANCE DRIVEN

EFFICENCY | CREDIBILITY | RESULTS

- America's Top-Rated Environmental Charity
- 96% of every dollar goes directly to our programs



- We've protected over **8.5 million acres** valued at more than **\$7.2 billion**

THE CONSERVATION FUND

- 350 mitigation projects in over half the US states
 - Endangered species
 - Migratory birds
 - State/Federal land impacts
 - Historic/Cultural resources
- Over 375,000 Acres Conserved and/or Restored with \$200 Million



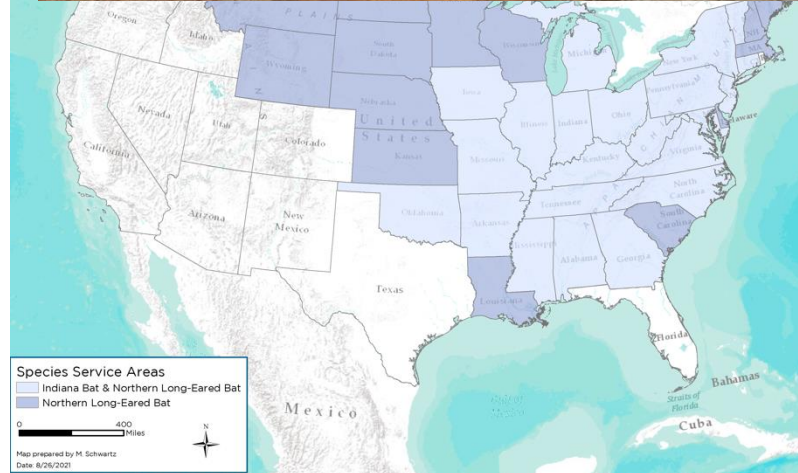
COMPENSATORY MITIGATION TYPES

- Permittee-Responsible Mitigation
- In-Lieu Fee programs
- Conservation/Mitigation banks

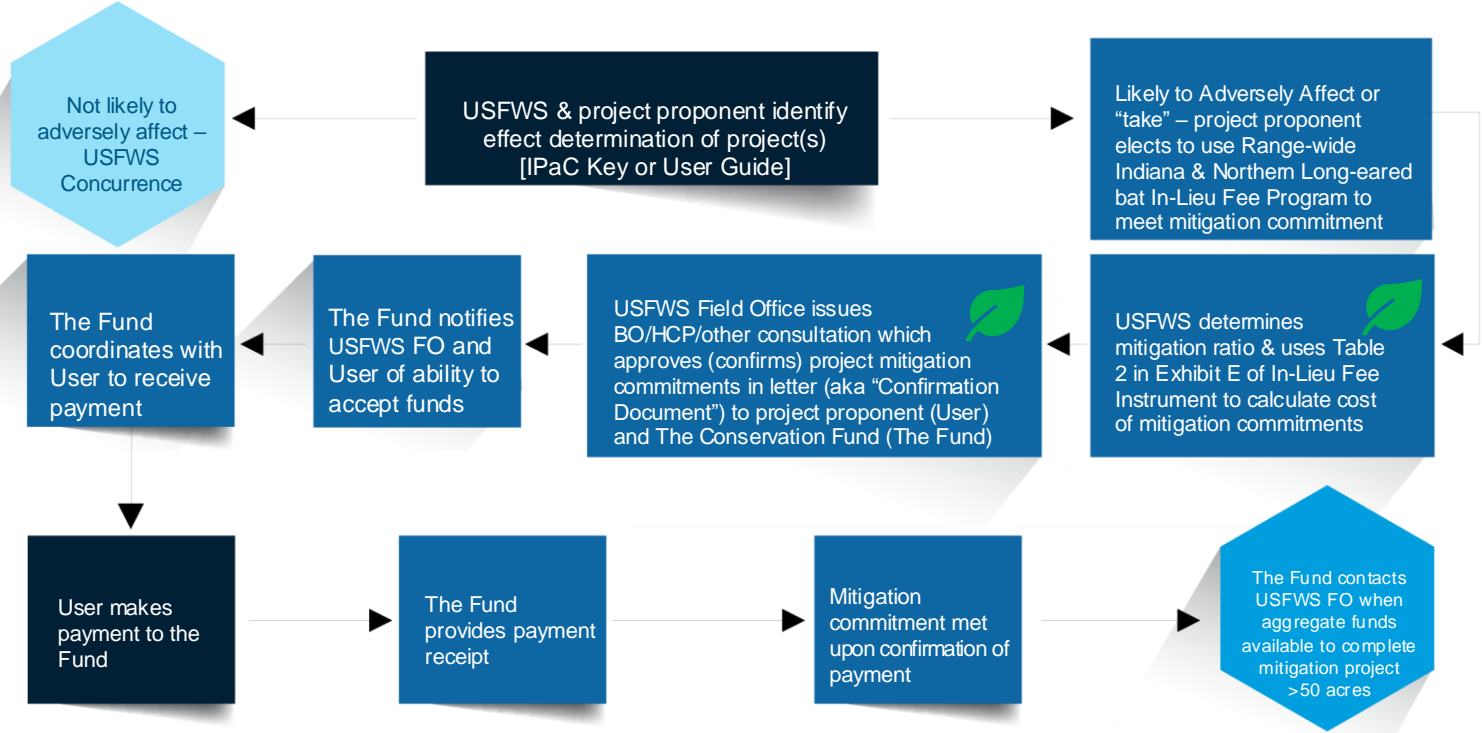


IN-LIEU FEE MITIGATION: INDIANA AND NORTHERN LONG-EARED BAT

- Collaboration with FHWA and USFWS
- Range-wide Bat In-Lieu Fee Program
- Mitigation for take (habitat or mortality)
- Mitigation obligation met once mitigation fee is paid
- Conservation benefit to bats by consolidating mitigation from multiple small impacts

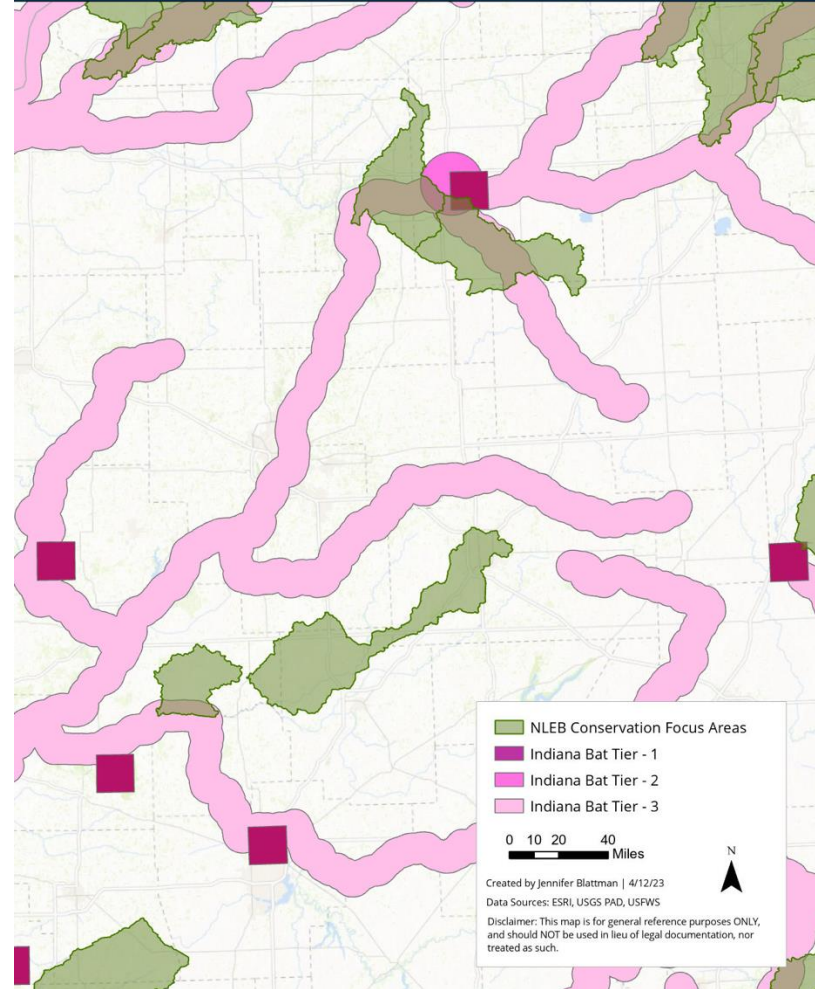


WORKFLOW FOR USING BAT ILF



CONSERVATION FOCUS AREAS

- Mandatory for Service Area/State participation in program
- Incorporate important bat habitat
- Narrow the focus of mitigation projects funded by ILF



MANAGING RISK

- Biggest risk is sufficient funding
- Rates vary by state
- Revised annually
- Includes closing costs and inflation

RANGE-WIDE INDIANA BAT AND NORTHERN LONG-EARED BAT IN-LIEU FEE PROGRAM

FEE SCHEDULE FOR CALCULATING COMPENSATORY MITIGATION FEES

January 2024 – December 2024

Table 2: Estimated Cost Per Acre Land Values by Service Area

ILF Service Area	Estimated Per Acre Compensatory Mitigation Fee By Service Area/Single Species (Ibat or NLEB)	Estimated Per Acre Compensatory Mitigation Fee By Service Area/Ibat+NLEB
Alabama	\$6,723	\$6,828
Arkansas	\$6,848	\$6,956
Connecticut	\$20,103	\$20,529
Delaware	\$14,601	N/A
Georgia	\$7,786	\$7,916
Illinois	\$12,813	\$13,064
Indiana	\$12,588	\$12,833
Iowa	\$13,522	\$13,790
Kansas	\$6,173	N/A
Kentucky	\$8,223	\$8,364
Louisiana	\$6,723	N/A
Maine	\$5,947	N/A
Maryland	\$14,476	\$14,767
Massachusetts	\$21,479	N/A
Michigan	\$10,349	\$10,541
Minnesota	\$10,599	N/A

FUNDING CONSERVATION WITH BAT ILF

- Pool 50 acres of payments in a state
- Identify potential projects within CFAs
- USFWS approves project proposal
- Performance standards met = Success
- Ongoing management and monitoring for the species by the long-term landowner



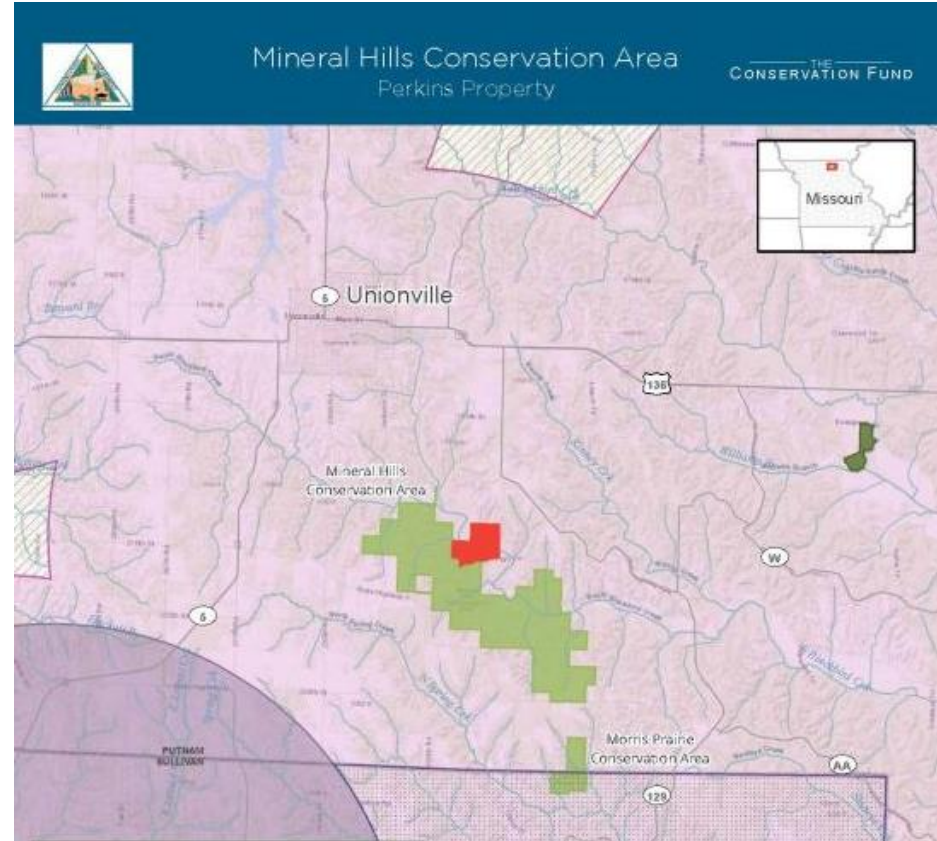
FUNDING RESTORATION WITH BAT ILF

- Monitoring at years 3 and 7
- Performance standards met → transfer to long-term steward
- Performance standards not met
↓
adaptive management plan and monitoring at year 10 or until standards met



ILF PROJECT - MISSOURI

- 193 acres added to Mineral Hills Conservation Area
- Property contained important summer breeding habitat for IBat and NLEB
- Funds were provided to pay for the land, transaction costs, and short/long-term stewardship of the land.
- Property was acquired by the Missouri Department of Conservation





Contact

Greg Good, Mitigation Solutions Program Manager
ggood@conservationfund.org

— THE —
CONSERVATION
FUND