

# OCEAN SCIENCE FOR STEWARDSHIP

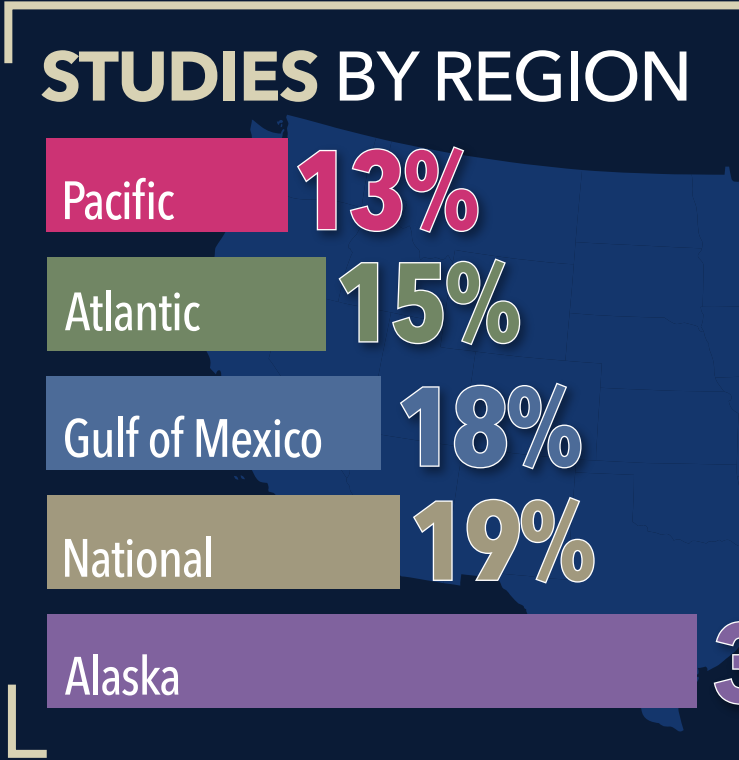
Created by Congress in 1973, BOEM's Environmental Studies Program (ESP) develops, funds, and manages rigorous scientific research studies to inform the bureau's policy decisions on offshore energy and mineral resource exploration, development, and production activities - decisions that affect the daily lives of the American taxpayer.

To commemorate ESP's 50th anniversary, BOEM invites you to view highlights from a half-century.

BOEM has funded more than **\$1.3 BILLION** in scientific research since 1973.

**STUDIES CONDUCTED:**

**2,186**

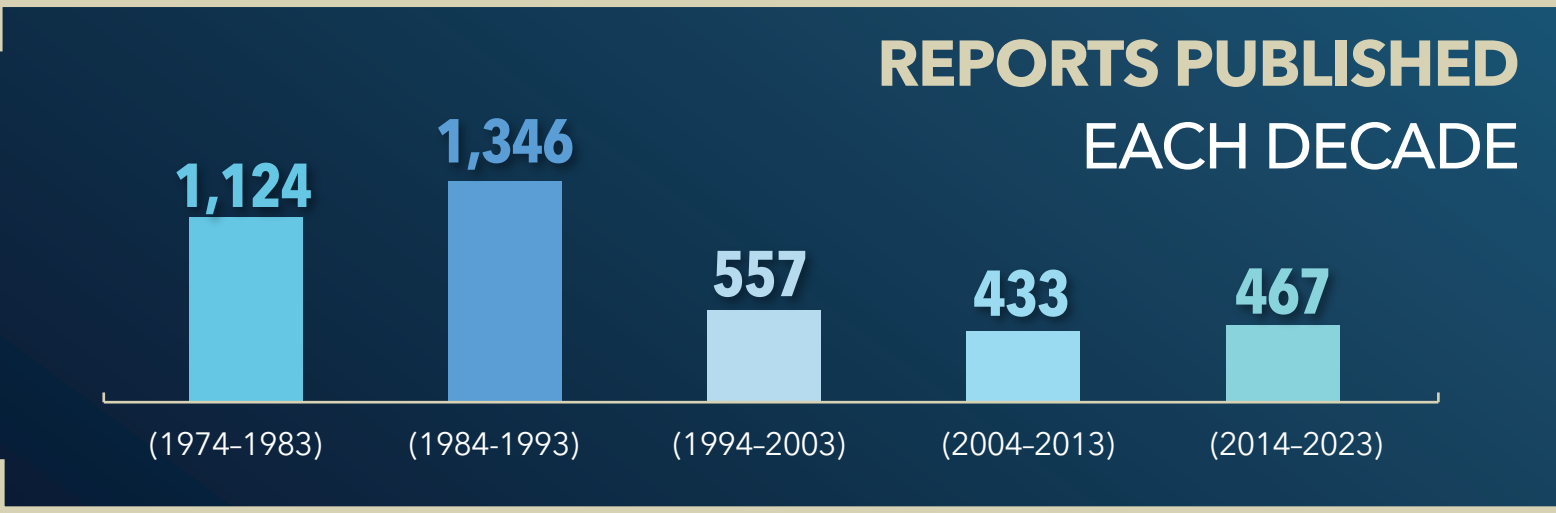


### Surf 50 Years of Coastal and Ocean Science

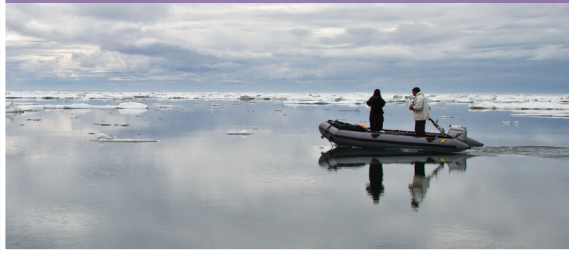
Launched in 2023, the ESP Hub is a new online platform that improves public access to BOEM's collection of ocean science research. With its intuitive user interface and well-organized theme pages, the ESP Hub significantly improves user accessibility to ESP studies, ushering in a new paradigm for scientific information discovery.

### Share Your Study Ideas with BOEM

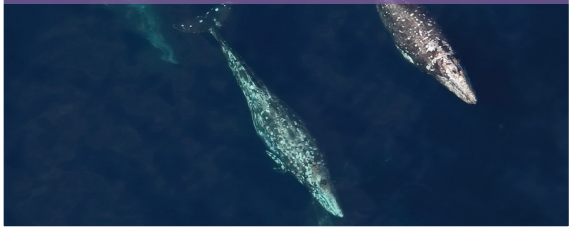
Each year, BOEM prepares its annual Studies Development Plan. These studies collect the information necessary to meet the needs of BOEM and other users. BOEM invites the public to submit study ideas for consideration. If you are interested in providing study ideas, join our science announcements mailing list at [www.boem.gov/subscribe](http://www.boem.gov/subscribe).



Field crew for adult bearded seal project in Wainwright, Alaska. Photo by Josh London.



Gray whales traveling approximately 55 km west of Point Hope, Alaska, during ASAMM. Flight 219, 5 August 2016.

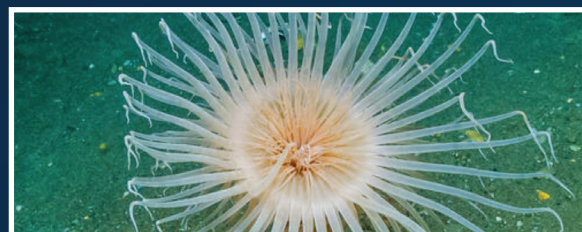


Adult bearded seal with a head-mounted Mk10 SDR in Kotzebue Sound, Alaska. Photo by John Jansen.

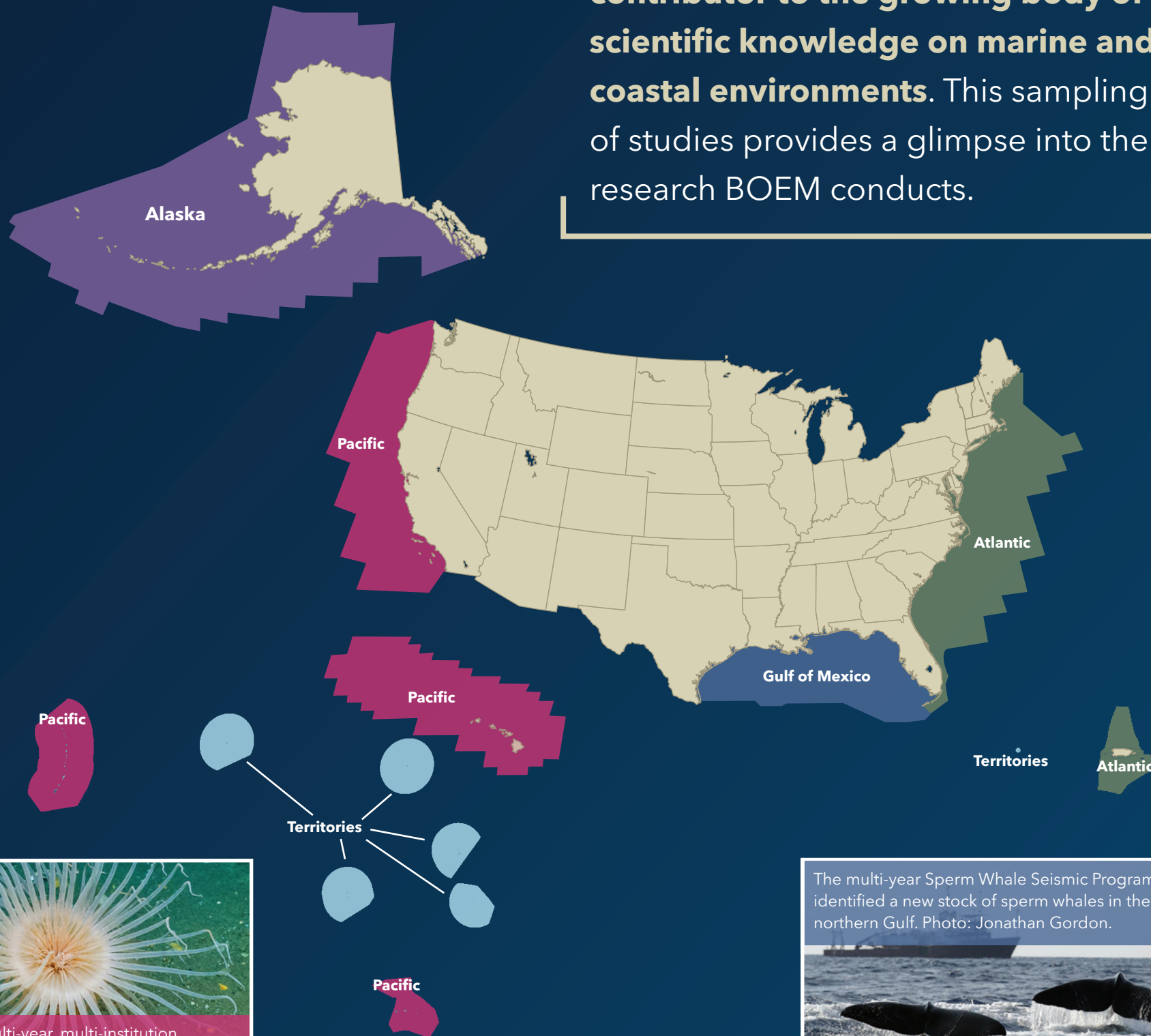


MARINE is a long-term partnership of over 35 governmental, academic, and private organizations monitoring rocky shore intertidal habitats. Photo of sea palm: David Lohse.

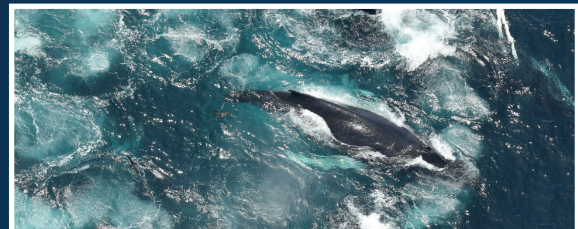
*Stylaster californicus* with a Blacksmith and many Squarespot at 41-m depth on Farnsworth Bank.



EXPRESS is a multi-year, multi-institution cooperative research campaign in deep sea areas off the Pacific Coast.



Through ESP's scientific research and support, BOEM is a **leading contributor to the growing body of scientific knowledge on marine and coastal environments**. This sampling of studies provides a glimpse into the research BOEM conducts.



Humpback whales observed bubble-net feeding on June 4, 2020; photo taken by New England Aquarium aerial survey team.

Moon snail (species unknown) at a ground validation site within a wind energy area off the coast of New York.



A multi-year, comprehensive study of the shoal complex off Cape Canaveral, FL, revealed ecological relationships and new findings.



Large brain and star corals found during long-term monitoring at the Flower Garden Banks National Marine Sanctuary. Photo: G.P. Schmahl/FGBNMS.



The multi-year Sperm Whale Seismic Program identified a new stock of sperm whales in the northern Gulf. Photo: Jonathan Gordon.



A satellite-tagged loggerhead ready for release.