

# **The Greenhouse Gas Life Cycle Energy Emissions Model (GLEEM) 2024 Version**

**May 2024**

**Eric Wolvovsky**

## Table of Contents

List of Figures .....	ii
List of Tables .....	ii
Abbreviations and Acronyms .....	iii
Abstract.....	iv
1 Introduction.....	1
2 Greenhouse Gas Emissions Methodology.....	3
2.1 Emissions from Exploration, Development, Production, and Transport.....	3
2.2 Emissions from Processing, Storage, and Distribution .....	4
2.3 Emissions from Consumption .....	5
2.4 Emissions from Energy Substitutes.....	8
3 Key Assumptions .....	11
4 Conclusion .....	14
5 References .....	15
Appendix A: Unit Conversions.....	16

## List of Figures

Figure 3-1. Historical U.S. consumption of petroleum products for 1950–2023 (in thousands of bbl) ..... 12

## List of Tables

Table 2-1. U.S. 2023 oil consumption .....	5
Table 2-2. U.S. 2023 coal consumption.....	6
Table 2-3. Petroleum emission factors for greenhouse gas inventories (in kg/gal).....	6
Table 2-4. Natural gas emission factors for greenhouse gas inventories (in kg/MMcf) .....	7
Table 2-5. Coal emission factors for greenhouse gas inventories (in kg/short tons).....	8
Table 2-6. Oil, natural gas, and coal conversions to BTUs.....	10
Table A-1. Conversion factors used within the model .....	16
Table A-2. Global warming potential (in metric tons).....	16

## Abbreviations and Acronyms

bbbl	barrel(s) of oil
bcf	billion cubic feet
BOEM	Bureau of Ocean Energy Management
BTU	British Thermal Unit(s)
CH <sub>4</sub>	methane
CO <sub>2</sub>	carbon dioxide
CO <sub>2</sub> e	carbon dioxide equivalent
EIA	Energy Information Administration
EPA	Environmental Protection Agency
°F	degree(s) Fahrenheit
gal	gallon(s)
GHG	greenhouse gas
GLEEM	Greenhouse Gas Life Cycle Energy Emissions Model
kg	kilogram(s)
MMcf	million cubic feet
N <sub>2</sub> O	nitrous oxide
OCS	Outer Continental Shelf
OECM	Offshore Environmental Cost Model
scf	standard cubic feet
U.S.	United States

## Abstract

The Bureau of Ocean Energy Management has updated its analytical model to estimate the combined upstream, midstream, and downstream greenhouse gas emissions for Outer Continental Shelf oil and gas resources potentially consumed under the national oil and gas leasing program. This report describes the analytical model methodology for the Greenhouse Gas Life Cycle Energy Emissions Model.

The analytical model uses historical consumption patterns, emissions factors, and economic and production estimates, subject to several assumptions, as outlined in this report.

**Citation:** Wolvovsky E. 2024. The Greenhouse Gas Life Cycle Energy Emissions Model (GLEEM) 2024 version. Sterling (VA): U.S. Department of the Interior, Bureau of Ocean Energy Management. 22 p. Report No.: OCS BOEM 2024-029

# 1 Introduction

Greenhouse gases (GHGs) are emitted largely through the burning of fossil fuels for energy consumption. As noted in a recent U.S. Geological Survey article, “multiple and independent lines of evidence clearly show that the world has warmed during the past 150 years, especially during the past six decades, and that this warming is primarily attributable to human activities that emit GHGs into the atmosphere” (Terando et al. 2020).

The Bureau of Ocean Energy Management (BOEM), which is the Federal agency responsible for authorizing oil and gas exploration, development, and production on the Outer Continental Shelf (OCS), currently analyzes air pollutant emissions every three years through its Gulfwide Emissions Inventory (Wilson et al. 2019). To understand the entire life cycle of GHG emissions, BOEM developed a model, the Greenhouse Gas Life Cycle Energy Emissions Model (GLEEM), which focuses on GHG emissions from the subsequent onshore processing, storage, and distribution of oil and gas, known as “midstream emissions,” and the consumption of oil and gas products, or “downstream emissions.” The version of GLEEM described in this document is an update from the 2023 version of the model (Wolvovsky 2023).

The goal of this report is to describe the GLEEM methodology for estimating the range of potential future emissions that may result from oil, gas, and coal development. This includes all onsite operations, if a user has this information, associated with oil, natural gas, and coal leases (exploration, development, and production), processing (refining, storage, and coal processing), delivery of these products to the final consumer, and consumption of the oil, natural gas, and coal products. The report references coal even though its development is not authorized by BOEM because the GLEEM model has the capability to estimate the effects of coal leasing, as well as onshore oil and natural gas leasing, on GHG emissions.

Due to uncertainties inherent in today’s energy markets, the most appropriate use for the model presented in this paper is for examining a range of potential GHG emission outcomes. Among the more significant uncertainties are the amount of oil, gas, and coal resource potential from a given lease; anticipated future oil, natural gas, and coal production; types of products to be consumed in the future; and future GHG regulatory regimes of the Federal Government or states, which could alter consumer demand for these resources. These uncertainties limit the accuracy of modeling to estimate projected GHG emissions. Therefore, BOEM recommends that users apply a range of possible scenarios to better capture the wide range of possible emissions. Nonetheless, BOEM believes the results provided by GLEEM give a useful picture of the consequences for GHG emissions of energy exploration, development, production, and consumption.

BOEM strives to address uncertainties and other challenges moving forward by revisiting the methodology regularly; adjusting inputs to reflect more recent data (e.g., emissions factors, consumption patterns, etc.); and adding to, removing, or modifying the algorithms described in this paper to reflect new techniques. Reflecting that commitment to improvement, this iteration represents the third generation GLEEM model originally developed during evaluation of the 2017–2022 National OCS Oil and Gas Leasing Program.

The 2024 version of the model, described in this document, also has a few minor changes compared to the 2023 version (Wolvovsky 2023). BOEM has updated the values used for fossil fuel production and consumption; emissions from refineries, natural gas systems, and coal processing; and processing gain.

## 2 Greenhouse Gas Emissions Methodology

The following analysis includes life cycle emissions from energy development, along with the substitution of sources for that energy under a “no leasing” scenario for the three GHGs that comprise more than 97% of all GHGs in the atmosphere: carbon dioxide (CO<sub>2</sub>), methane (CH<sub>4</sub>), and nitrous oxide (N<sub>2</sub>O). The model estimates the emissions from exploration, development, production, transportation, processing (such as refining and storage), distribution, and consumption of energy products or their substitutes. It excludes emissions from secondary changes regarding these operations, such as oil and gas companies’ office space, or changes in car manufacturing in response to changing market conditions. Additionally, emissions from fluorocarbons are not included because they are used in small quantities in refrigeration and circuit breakers and are not released intentionally as part of the oil, natural gas, and coal life cycle. Lastly, the model offers the option to evaluate emissions from replacement, which BOEM calls substitutions, under a “no lease” scenario.

The following four subsections detail the process for estimating GHG emissions. **Section 2.1** explains the data source for emissions released from onsite operations. **Section 2.2** describes the emissions released as part of processing and distribution. In **Section 2.3**, emissions resulting from consumption of oil, natural gas, and coal products are calculated using emissions factors and historical consumption patterns. Each calculation described in this section is performed three times, once each for CO<sub>2</sub>, CH<sub>4</sub>, and N<sub>2</sub>O. **Section 2.4** describes the method for estimating emissions from substitute sources.

### 2.1 Emissions from Exploration, Development, Production, and Transport

The GLEEM greenhouse gas model estimates midstream and downstream GHG emissions. Onsite, or upstream, emissions must be estimated using other methods. BOEM uses the Offshore Environmental Cost Model (OECM) to calculate the GHG emissions associated with oil and gas activity occurring onsite (Industrial Economics Inc. 2018a; 2018b). The OECM estimates the monetized impact of typical activities associated with offshore production, including potential oil spills (other than catastrophic oil spills). As the basis for its calculations, the OECM uses economic inputs, resource estimates, expected exploration and development scenarios, and expected numbers of wells and associated production.

The OECM estimates GHG emissions from OCS operations associated with anticipated production. The OECM does not calculate onshore emissions associated directly with anticipated OCS production (e.g., onshore infrastructure). As described in **Section 2.4**, the OECM is also used to estimate GHG emissions from substitute energy sources that would replace forgone OCS production in the event of a decision for no leasing. The OECM reports a single total emissions number for each of the three major GHGs as well as annualized upstream emissions of each of the three GHGs.

Equation 1:

$$PE_{onsite} = \sum PE_{equipment}$$

where

$PE_{onsite}$  is total production emissions from onsite sources in metric tons



$PE_{equipment}$  are emissions from onsite operating equipment, such as from drilling wells, constructing platforms, delivering supplies, and transporting the resources to shore, in metric tons

## 2.2 Emissions from Processing, Storage, and Distribution

Generally, oil is refined into petroleum products for specific uses, such as jet fuel, kerosene, and motor gasoline. The ratio of expected oil production from given sites divided by total national crude oil inputs to refineries is used to scale emissions from refineries. Crude oil input data from 2023 (EIA 2024a) are used together with 2023 GHG emissions from refineries (USEPA 2024b). The same approach is used for natural gas storage and transmission; a ratio of production and national gas consumption in 2023 (EIA 2024a) is used to scale the Environmental Protection Agency’s (EPA’s) 2023 inventory (USEPA 2024b) of natural gas systems emissions. The same two datasets are also used to scale coal’s post mining emissions. It is assumed emissions from these activities are in proportion to the amount of oil and gas that make their way through these facilities. Note that the EPA’s emissions inventory only tracks CH<sub>4</sub> for coal. As a result, GLEEM does not account for CO<sub>2</sub> and N<sub>2</sub>O emissions for coal in the midstream.

Equation 2:

$$PE_{offsite} = R_{oil} \frac{Oil_{Production}}{Oil_{Total}} + SD_{ng} \frac{NG_{Production}}{NG_{Total}} + PM_{coal} \frac{Coal_{Production}}{Coal_{Total}}$$

where

$PE_{offsite}$  is total emissions from offsite processing in metric tons

$R_{oil}$  is emissions from all oil refining onshore in metric tons, from

- Table 3-45—Crude Oil Transportation and Refining (USEPA 2024b)
- Table 3-47—Transportation and Crude Refining (USEPA 2024b)
- Table 3-49—Transportation and Crude Refining (USEPA 2024b)

$Oil_{Production}$  is oil expected to be produced in bbl

$Oil_{Total}$  is total U.S. oil refinery inputs in 2023 (EIA 2024a) in bbl

$SD_{ng}$  is emissions from storage and distribution of natural gas in metric tons, from

- Table 3-74—Processing, Transmission and Storage, Distribution (USEPA 2024b)
- Table 3-76—Processing, Transmission and Storage, Distribution (USEPA 2024b)
- Table 3-78—Processing, Transmission and Storage (USEPA 2024b)

$NG_{Production}$  is natural gas expected to be produced in millions of cubic feet (MMcf)

$NG_{Total}$  is total U.S. natural gas consumption from 2023 (EIA 2024a) in MMcf

$PM_{coal}$  is emissions from post mining processing of coal in metric tons, from

- Table 3-35—Post Mining Underground and Surface (USEPA 2024b)

$Coal_{Production}$  is coal expected to be produced in millions of short tons

$Coal_{Total}$  is total U.S. coal consumption from 2023 (EIA 2024a) in short tons

## 2.3 Emissions from Consumption

GLEEM assumes that U.S. markets consume all produced oil, natural gas, and coal (for details on this assumption, see **Section 3**). The EIA's 2023 national consumption reports (EIA 2024a) provide the data on the types of petroleum products that Americans consume and the levels of consumption. The percent of total consumption by each product is generated by dividing the national consumption of each processed fuel type (e.g., motor gasoline) by the consumption of all fuels which start with the same raw material (e.g., oil).

Equation 3:

$$C_i = \frac{Fuel_i}{Fuel_{Total}}$$

where

$C_i$  is a ratio consumption factor for end use of a petroleum or coal product

$Fuel_i$  is the national consumption for a processed fuel type (e.g., motor gasoline) (EIA 2024a)

$Fuel_{Total}$  is total national consumption of products made from the same raw material (e.g., oil) (EIA 2024a)

**Tables 2-1 and 2-2** list the actual consumption levels and percent of total consumption for each petroleum and coal product quantified by the EIA (EIA 2024a). Because natural gas is not converted into multiple combustible products, it is not included in this step.

**Table 2-1. U.S. 2023 oil consumption**

Fuel Type	2023 Consumption (1,000s of barrels)	2023 Consumption (% of total)
Asphalt and Road Oil	134,685	1.82
Aviation Gasoline	4,380	0.06
Distillate Fuel Oil	1,435,545	19.43
Jet Fuel (Kerosene Type)	602,980	8.16
Kerosene	4,015	0.05
Propane	288,350	3.90
Propylene	97,455	1.32
Hydrogen Gas Liquids	875,635	11.85
Lubricants	30,295	0.41
Motor Gasoline	3,264,560	44.17
<b>Petroleum Coke</b>	91,980	1.24
Residual Fuel Oil	100,375	1.36
Other Oil	459,155	6.22

Source: EIA (2024a)

Note: 1 barrel is equal to 42 gallons.

**Table 2-2. U.S. 2023 coal consumption**

Fuel Type	2023 Consumption (1,000s of short tons)	2023 Consumption (% of total)
Commercial	694	0.16
Electric Power Sector	387,170	90.78
Industrial (Other)	22,857	5.36
Industrial (Coke Plants)	15,787	3.70

Source: EIA (2024a)

When oil is refined, the volume of product increases as a result of the addition of other ingredients used to make each petroleum product. This volume increase is called the processing gain. Currently, EIA estimates processing gain to be 6.3% across all petroleum products (EIA 2024b).

By allocating expected production proportionately based on the petroleum and coal products and incorporating oil processing gain, BOEM can apply EPA's emissions factors for GHG inventories (**Table 2-3**). These numbers represent the mass (in kilograms [kg]) of GHG emitted for every gallon (gal) of fuel type burned. These categories of petroleum products do not match up perfectly between EIA and EPA. In two cases (distillate and residual fuel oils), there are multiple EPA emission factors for a single EIA product category. In these instances, the amount of oil is split evenly among the possible emission factors. This difference does not have a major effect on the overall analysis because the emissions factors for the different distillate and residual fuel oil categories are similar. Lastly, BOEM matched EIA's category for petroleum coke with EPA's petrochemical feedstock emissions factors.

**Table 2-3. Petroleum emission factors for greenhouse gas inventories (in kg/gal)**

Fuel Type	CO <sub>2</sub>	CH <sub>4</sub>	N <sub>2</sub> O
Asphalt and Road Oil	11.91	0.00047	0.00009
Aviation Gasoline	8.31	0.00036	0.00007
Distillate Fuel Oil #1	10.18	0.00042	0.00008
Distillate Fuel Oil #2	10.21	0.00041	0.00008
Distillate Fuel Oil #4	10.96	0.00044	0.00009
Jet Fuel (Kerosene Type)	9.75	0.00041	0.00008
Kerosene	10.15	0.00041	0.00008
Propane	5.72	0.00027	0.00005
Propylene	6.00	0.00027	0.00005
Other Liquid Petroleum Gases	5.68	0.00028	0.00006
Lubricants	10.69	0.00043	0.00009
Motor Gasoline	8.78	0.00038	0.00008
Petrochemical Feedstocks	8.88	0.00038	0.00008
Residual Fuel Oil #5	10.21	0.00042	0.00008
Residual Fuel Oil #6	11.27	0.00045	0.00009
Other Oil (> 401°F)	10.59	0.00042	0.00008

Source: USEPA (2024a)

Not every fuel type is burned; some oil and natural gas are used as an ingredient for non-combustible products such as fertilizer and petrochemicals. EIA (2024a) reports that 1,097,000 MMcf of natural gas, 1,342,470,000 bbl of oil, and 426,508 short tons of coal are not combusted. In these cases, the use of the products does not directly result in GHG emissions and therefore are excluded from GHG emissions estimates for consumption calculations. Emissions are still calculated for these products in **Section 2.2**.

Thus, the estimation for emissions from consumption of oil is a summation of the emissions from each distinct petroleum product that is combusted.

Equation 4:

$$CE_{oil} = (PG + 1) * CP_{oil}(1 - NC_{oil}) * \sum_{i=1}^n [C_i * EF_i]/1,000$$

where

- $CE_{oil}$  is total emissions from oil consumption in metric tons
- $PG$  is the percent processing gain
- $CP_{oil}$  is oil expected to be produced in gal
- $NC_{oil}$  is the proportion of oil that is not combusted
- $C_i$  is the consumption factor for end use of a petroleum product (ratio, see Equation 3)
- $EF_i$  is the emission factor for a petroleum product in kg/gal
- $i$  refers to each of the petroleum products listed in **Table 2-3**
- 1,000 converts kg to metric tons

Natural gas is not refined into distinct combustible products, and there is no processing gain; moreover, there is only a single product to assess, even though natural gas is used in different markets. USEPA (2024b) provides a single set of emission factors for natural gas (**Table 2-4**).

**Table 2-4. Natural gas emission factors for greenhouse gas inventories (in kg/MMcf)**

	CO <sub>2</sub>	CH <sub>4</sub>	N <sub>2</sub> O
Natural Gas	54,440	1.039	0.100

Source: USEPA (2024b)

This makes the natural gas estimation straightforward:

Equation 5:

$$CE_{ng} = CP_{ng}(1 - NC_{ng}) * EF_i/1,000$$

where

- $CE_{ng}$  is total emissions from natural gas consumption in metric tons
- $CP_{ng}$  is natural gas produced and consumed in MMcf
- $NC_{ng}$  is the proportion of natural gas that is not combusted
- $EF_i$  is the emission factor for natural gas in kg/MMcf
- 1,000 converts kg to metric tons

Coal is processed into multiple combustible products, and there is no processing gain. USEPA (2024b) provides emission factors for coal (**Table 2-5**).

**Table 2-5. Coal emission factors for greenhouse gas inventories (in kg/short tons)**

	CO <sub>2</sub>	CH <sub>4</sub>	N <sub>2</sub> O
Mixed (Commercial Sector)	2,016	0.235	0.034
Mixed (Electric Power Sector)	1,885	0.217	0.032
Mixed (Industrial Coking)	2,468	0.289	0.042
Mixed (Industrial Sector)	2,116	0.246	0.036

Source: USEPA (2023b)

The coal consumption is estimated using the following equation:

Equation 6:

$$CE_{coal} = CP_{coal}(1 - NC_{coal}) * \sum_{i=1}^n [C_i * EF_i] * 0.907185$$

where

$CE_{coal}$  is total emissions from coal consumption in metric tons

$CP_{coal}$  is coal produced and consumed in short tons

$NC_{coal}$  is the proportion of coal that is not combusted

$C_i$  is the consumption factor for end use of a petroleum product (ratio, see Equation 3)

$EF_i$  is emission factor for coal in kg/short ton

0.907185 converts short tons to metric tons

Finally, total emissions, in metric tons, from each scenario can be summed as  $E_{total}$ :

Equation 7:

$$E_{total} = PE_{offsite} + PE_{onsite} + CE_{oil} + CE_{ng} + CE_{coal}$$

where

$E_{total}$  is total emissions from each scenario in metric tons

$PE_{offsite}$  is total emissions from offsite processing in metric tons

$PE_{onsite}$  is total emissions from onsite production in metric tons

$CE_{oil}$  is total emissions from oil consumption in metric tons

$CE_{ng}$  is total emissions from natural gas consumption in metric tons

$CE_{coal}$  is total emissions from coal consumption in metric tons

## 2.4 Emissions from Energy Substitutes

To evaluate the difference between new leasing versus a “no leasing” scenario, GLEEM estimates the GHG emissions that would otherwise be released from the other sources of energy Americans would use. In addition, under a “no leasing” scenario, there would be some degree of energy conservation.

For changes in energy consumption patterns, GLEEM uses inputs derived from an energy market simulation model, MarketSim (Industrial Economics Inc. 2021). MarketSim simulates end-use domestic consumption of energy and then estimates the substitution rates for oil and natural gas. GLEEM’s substitution algorithms estimate the quantity of oil, natural gas, and coal required to meet those substitution rates based on expected production from the leases. The main model (described in **Sections 2.1, 2.2, and 2.3**) is then processed a second time using the substituted energy quantities.

GLEEM assumes that nuclear, biofuels, solar, and wind sources have negligible GHG emissions at the midstream and downstream phases, because the emissions are small by unit (Industrial Economics Inc. 2018a; 2018b).

To determine fuel quantities for the “no leasing” scenario, the first step is to convert all the expected production into the same unit, British thermal units (BTUs); see Appendix A for conversion factors. Next, fuel quantities are calculated for oil (Equation 8), natural gas (Equation 9), and coal (Equation 10).

Equation 8:

$$CS_{oil} = CP_{oil} * S_{oil} + CP_{ng} * S_{ng} + CP_{coal} * S_{coal}$$

where

$CS_{oil}$  is the total substituted oil in BTUs

$CP_{oil}$ ,  $CP_{ng}$ , and  $CP_{coal}$  are expected production for oil, natural gas, and coal (in BTUs)

$S_{oil}$ ,  $S_{ng}$ , and  $S_{coal}$  are the substitution rates for oil, natural gas, and coal expected to be replaced by oil from other sources

Equation 9:

$$CS_{ng} = CP_{oil} * S_{oil} + CP_{ng} * S_{ng} + CP_{coal} * S_{coal}$$

where

$CS_{ng}$  is the total substituted natural gas (in BTUs)

$CP_{oil}$ ,  $CP_{ng}$ , and  $CP_{coal}$  are expected production for oil, natural gas, and coal (in BTUs)

$S_{oil}$ ,  $S_{ng}$ , and  $S_{coal}$  are the substitution rates for oil, natural gas, and coal expected to be replaced by natural gas from other sources

Equation 10:

$$CS_{coal} = CP_{oil} * S_{oil} + CP_{ng} * S_{ng} + CP_{coal} * S_{coal}$$

where

$CS_{coal}$  is the total substituted coal in BTUs

$CP_{oil}$ ,  $CP_{ng}$ , and  $CP_{coal}$  are expected production for oil, natural gas, and coal (in BTUs)

$S_{oil}$ ,  $S_{ng}$ , and  $S_{coal}$  are the substitution rates for oil, natural gas, and coal expected to be replaced by coal from other sources

**Table 2-6** provides the conversion rates of the different fuels.

**Table 2-6. Oil, natural gas, and coal conversions to BTUs**

Fuel	Conversion	Units Converted to BTUs
Oil	5,800	1,000s of barrels
Natural Gas	1,032	MMcf
Coal	20,387	short tons

Source: Whitney et al. (2009)

After converting the oil, natural gas, and coal back into their standard units (bbl, scf, and short tons, respectively), midstream and downstream emissions are calculated using the method described in **Sections 2.2 and 2.3**. BOEM currently uses the OECM to estimate upstream emissions from substitute energy sources described above. These substitute energy sources that result in estimates of upstream GHG emissions include onshore oil, gas, and coal production as well as production and transportation of energy imports.

### 3 Key Assumptions

GLEEM makes several assumptions, some of which may reduce its accuracy. The principal variables in this estimation are the production estimates of oil, natural gas, and coal, and the underlying uncertainty in these estimates has a profound impact on overall accuracy. Other critical assumptions also affect the GHG emission estimates and are as follows:

- 1) *Engines used for production, processing, and consumption of oil and gas will not become more efficient, and oil and gas will remain a primary energy source.*

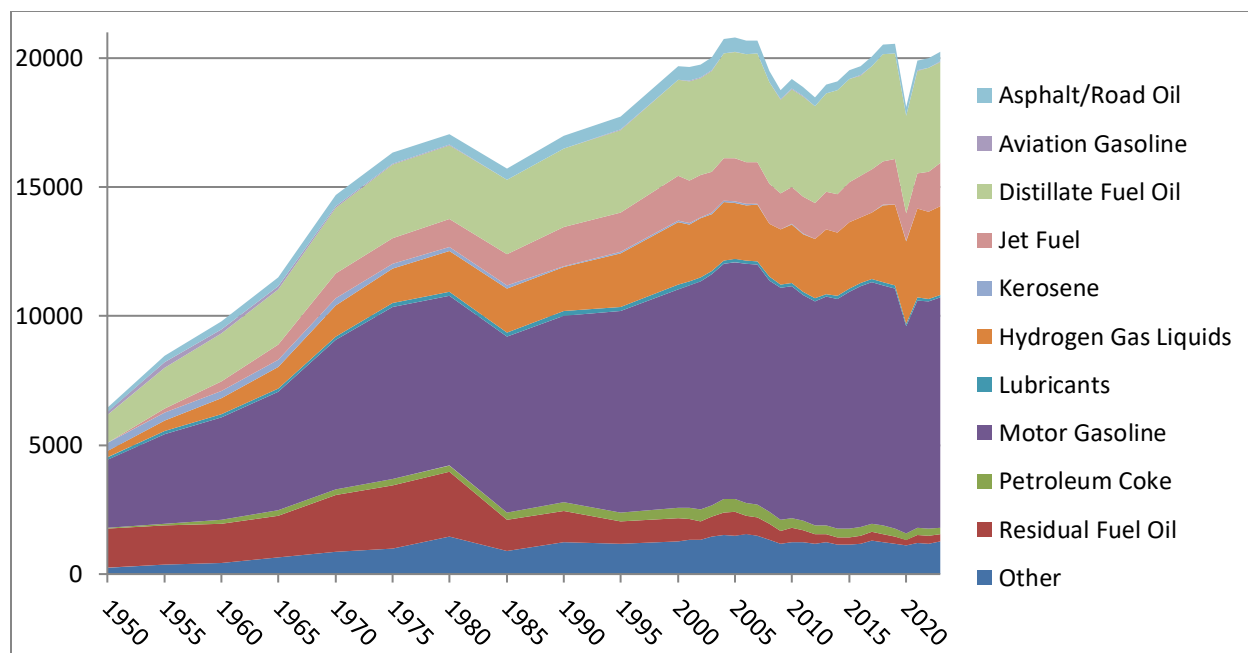
Historically, engines have become increasingly efficient but have remained dependent on fossil fuels. Efficiency improvements are made to meet the need for greater fuel economy and to meet government regulations; these improvements could alter the fuel type or quantity used to generate power. Similar changes could impact other types of products, such as plastics and fertilizers, by altering not only the amount used, but also the portion consumed by each sector. For example, motor gasoline remains the largest petroleum product consumed by Americans, ranging between 39% and 47% of each barrel of petroleum product consumed since 1950. As battery technology continues to improve, plug-in electric vehicle prices may continue to drop (Lutsey and Nicholas 2019), increasing the share of electric vehicles and reducing the percent of oil used for motor gasoline. However, as the American electrical grid is increasingly dependent on natural gas, such shifts could increase demand for natural gas.

**Figure 3-1** shows how consumption patterns of oil have changed in the past, including the rise of jet fuel and motor gasoline use and the contraction of residual fuel oil use. Despite these longer-term shifts, petroleum products maintain a reasonable level of continuity from year to year.

Without a definitive method of estimating consumption markets for the production life of a given project, it is impossible to predict how consumption will change. Using 2023 data still provides a useful approximation of consumption, because these patterns have not radically changed over the short term. Longer-term trends could be incorporated by keeping GLEEM up-to-date with consumption patterns. The 2023 data is a useful case study in these changes, despite the sharp change to American's behavior, and by extension consumption of petroleum products, the ratio of petroleum products did not change more than in other years, despite overall consumption dropping.

Efficiency is likely to continue to improve, meaning less fuel will be required to generate the same amount of energy. These changes to engine efficiency also affect the calculations in estimating emissions from exploration, development, production, processing, storage, and distribution. This assumption equally impacts both the evaluation of expected production and energy substitution, thereby still allowing direct comparison of emissions.





**Figure 3-1. Historical U.S. consumption of petroleum products for 1950–2023 (in thousands of bbl)**

Source: EIA (2024a)

2) *All resources produced on leases are processed and consumed.*

GLEEM assumes all resources entered into the model will be discovered, produced, processed, and consumed. In reality, some resources are lost, either by not being brought to production, or through inefficiencies at various stages of processing and distribution or other incidents, such as spills. These results assume that all resources reach a customer and are consumed with perfect efficiency. This assumption ensures emissions will not be underestimated. GLEEM accounts for products that are not combusted as part of their use.

3) *“Other” oils, distillate fuel oil, and residual fuel oil are approximated.*

There are several places where EIA’s consumption categories do not match EPA’s emissions factors. EIA lumps pentanes, petrochemical feedstocks, naphtha-type jet fuel, still gas, waxes, and crude oil into a single “Other” category, and these categories are matched with EPA’s “Other Oil (> 401°F)” emissions factors. Similarly, EPA has two emissions factors for “Residual Fuel Oil” and three for “Distillate Fuel Oil,” but EIA reports distillate and residual fuel oils broadly. As a result, it is assumed there is equal consumption for each emissions factor, with half of the residual fuel oil using each emission factor, and a third of the distillate oil for the three emission factors. These assumptions slightly reduce GLEEM’s accuracy. See **Table 2-1** for both residual and distillate fuel oil emission factors.

*4) Processing gain is equal across all petroleum products.*

Although all refined oil products have a processing gain, it is not the same for each product. Currently, EIA (2024b) estimates processing gain as 6.3% for all oil products. GLEEM applies this value to all oil products due to lack of available information as to the processing gain of individual fuels.

*5) All products are consumed domestically.*

Emissions from exported fuels are not accounted for in GLEEM. In 2023, total exports were small compared to the volumes consumed domestically (EIA 2023a). This assumption slightly underestimates the emissions from transportation of these products to other countries. Additionally, because there is a single product for natural gas, the emission factors do not vary if they are consumed overseas. However, oil and coal are consumed in a variety of products with a range of emissions factors, and there is some loss in accuracy for petroleum and coal products consumed overseas, as other countries do not consume these products in proportions identical to the U.S. Even with the loss of accuracy, approximating global emissions from oil and coal using the U.S. as the example provides an estimation of national oil and coal consumption. Future increases in exports may require changes in future iterations of the model.

*6) Products are consumed in the same proportions as products from all national sources.*

Oil and coal from a particular lease are refined into specific products, and those products are not necessarily in the same proportions as oil and coal mined from all sources nationally. This assumption is necessary if the user lacks information about their specific leases. If more specific information is available about the type of products oil and coal are refined into, GLEEM can be adjusted to accommodate such information. See **Section 2.3** and the user guide for details.

*7) Coal transport emissions are not modeled.*

At the current time, it is not possible to model coal transport to processing facilities or from those facilities to the final customer. Coal transport emissions are not accounted for in the consumption calculations because this could vary widely as coal increasingly becomes a regional method of generating energy and is not always transported by coal power. A user estimating coal consumption could eliminate this factor by incorporating these emissions as part of the upstream emissions, rather than the midstream emissions, where they actually take place.

## 4 Conclusion

Future changes in policy, supply and demand, shifting economic circumstances, or technological advances could substantially change various parts of this model. As a result, BOEM anticipates making annual updates to keep the consumption inputs up-to-date and to add or modify algorithms as new information, or changes in the processing of oil, natural gas, and coal, alter the climate change impacts of these resources.

Additionally, it is recommended that users model multiple scenarios to develop a broad range of possible outcomes for understanding the range of possible outcomes on oil, natural gas, and coal projects, which can last decades. Users should model energy at the highest level possible, as GLEEM is intended to evaluate emissions from the American energy sector as a whole. Finally, it is recommended that results should be rounded to at least the nearest 1,000 metric tons for each pollutant to avoid suggesting a higher degree of accuracy than actually exists in GLEEM.

## 5 References

- EIA. 2024a. April 2024: monthly energy review. Washington (DC): U.S. Department of Energy, Energy Information Administration, Office of Energy Statistics. 296 p. Report No.: DOE/EIA-0035(2024/4).
- EIA. 2024b. U.S. refinery processing gain. Washington (DC): U.S. Department of Energy, Energy Information Administration; [updated 2024 Apr 30].  
<https://www.eia.gov/dnav/pet/hist/LeafHandler.ashx?n=pet&s=mpgryus3&f=a>.
- Industrial Economics Inc. 2018a. Forecasting environmental and social externalities associated with outer continental shelf (OCS) oil and gas development, volume 1: 2018 revised Offshore Environmental Cost Model (OECM). Sterling (VA): U.S. Department of the Interior, Bureau of Ocean Energy Management. 360 p. Report No.: OCS Study BOEM 2018-066.
- Industrial Economics Inc. 2018b. Forecasting environmental and social externalities associated with outer continental shelf (OCS) oil and gas development, volume 2: supplemental information to the 2018 revised Offshore Environmental Cost Model (OECM). Sterling (VA): U.S. Department of the Interior, Bureau of Ocean Energy Management. 165 p. Report No.: OCS Study BOEM 2018-067.
- Industrial Economics Inc. 2021. Consumer surplus and energy substitutes for OCS oil and gas production: the 2021 revised market simulation model (MarketSim). Model description. Sterling (VA): U.S. Department of the Interior, Bureau of Ocean Energy Management. 38 p. Report No.: OCS Study BOEM 2021-072.
- Intergovernmental Panel on Climate Change. 2021. Climate change 2021: the physical science basis. Contribution of working group I to the sixth assessment report of the Intergovernmental Panel on Climate Change. Chapters 1-13. Cambridge (UK) and New York (NY): Cambridge University Press. <https://www.ipcc.ch/report/ar6/wg1/>.
- Lutsey N, Nicholas M. 2019. Update on electric vehicle costs in the United States through 2030. Washington (DC): International Council on Clean Transportation. 12 p. Report No.: Working Paper 2019-06.
- Terando A, Reidmiller D, Hostetler SW, Littell JS, Beard Jr. TD, Weiskopf SR, Belnap J, Plumlee GS. 2020. Using information from global climate models to inform policymaking—the role of the U.S. Geological Survey. Reston (VA): U.S. Department of the Interior, U.S. Geological Survey. 32 p. Report No.: Open-File Report 2020-1058.
- USEPA. 2024a. Emission factors for greenhouse gas inventories. Washington (DC): U.S. Environmental Protection Agency; [accessed 2024 May 28].  
[https://www.epa.gov/system/files/documents/2022-04/ghg\\_emission\\_factors\\_hub.pdf](https://www.epa.gov/system/files/documents/2022-04/ghg_emission_factors_hub.pdf).
- USEPA. 2024b. Inventory of U.S. greenhouse gas emissions and sinks: 1990–2022. Washington (DC): U.S. Environmental Protection Agency. 919 p. Report No.: EPA 430-R-24-004.
- Whitney G, Behrens CE, Glover C. 2009. U.S. fossil fuel resources: terminology, reporting, and summary; CRS Report for Congress; Table 5. Washington (DC): Congressional Research Service, Library of Congress. 29 p.
- Wilson D, Billings R, Chang R, Do B, Enoch S, Perez H, Sellers J. 2019. Year 2017 emissions inventory study. New Orleans (LA): U.S. Department of the Interior, Bureau of Ocean Energy Management, Gulf of Mexico OCS Region. 231 p. Report No.: OCS Study BOEM 2019-072.
- Wolvovsky E. 2023. The Greenhouse Gas Life Cycle Energy Emissions Model (GLEEM) 2023 version. Washington (DC): U.S. Department of the Interior, Bureau of Ocean Energy Management. 20 p. Report No.: OCS Study BOEM 2023-025.

## Appendix A: Unit Conversions

**Table A-1. Conversion factors used within the model**

Unit	Conversion
1 kilogram (kg)	1,000 metric tons
1 metric ton	0.907185 short tons
1 barrel (bbl)	42 gallons
1 million barrels (mmbbl)	1,000,000 barrels (bbl)
1 thousand cubic feet (mcf)	1,000 standard cubic feet (scf)
1 million cubic feet (MMcf)	1,000,000 scf
1 billion cubic feet (bcf)	1,000,000,000 scf
1 barrel of oil equivalent (boe)	5,620 scf gas
1 barrel of oil (bbl)	5,800,000 British Thermal Units (BTUs)
1 cubic foot natural gas	1,029 BTUs
1 short ton coal	20,387,000 BTUs

**Table A-2. Global warming potential (in metric tons)**

Greenhouse Gas	100 Year Global Warming Potential (CO <sub>2</sub> e)
CO <sub>2</sub>	1
CH <sub>4</sub>	30
N <sub>2</sub> O	273

Source: Table 7.15 of Intergovernmental Panel on Climate Change (2021)



### **Department of the Interior (DOI)**

The Department of the Interior protects and manages the Nation's natural resources and cultural heritage; provides scientific and other information about those resources; and honors the Nation's trust responsibilities or special commitments to American Indians, Alaska Natives, and affiliated island communities.



### **Bureau of Ocean Energy Management (BOEM)**

The mission of the Bureau of Ocean Energy Management is to manage development of U.S. Outer Continental Shelf energy and mineral resources in an environmentally and economically responsible way.

### **BOEM Environmental Studies Program**

The mission of the Environmental Studies Program is to provide the information needed to predict, assess, and manage impacts from offshore energy and marine mineral exploration, development, and production activities on human, marine, and coastal environments. The proposal, selection, research, review, collaboration, production, and dissemination of each of BOEM's Environmental Studies follows the DOI Code of Scientific and Scholarly Conduct, in support of a culture of scientific and professional integrity, as set out in the DOI Departmental Manual (305 DM 3).