



**BOEM** Bureau of  
Ocean Energy Management

# Marine Minerals Information System

---

Update

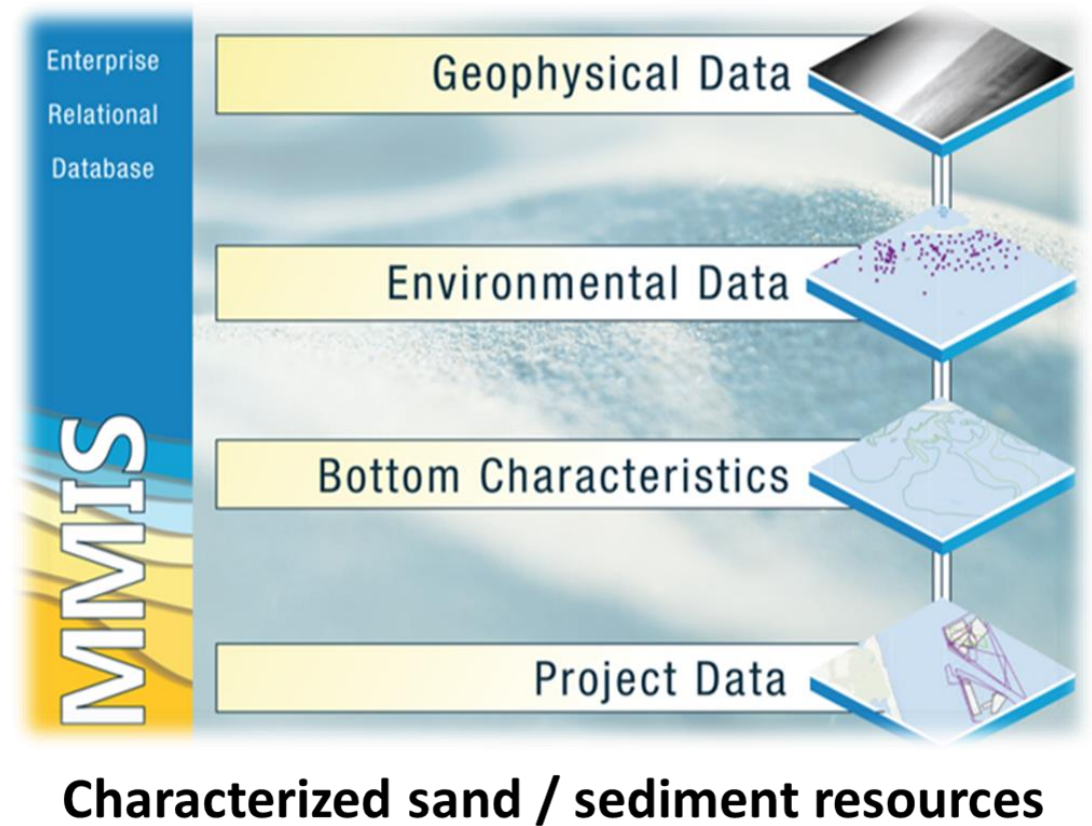
December 8, 2022

Lora Turner | Ariel Kay | Gulf of Mexico Sand Management Working Group

**MMIS**

# Agenda

- MMIS Recap
- MMIS Stakeholder Assessment Findings
  - Accessible Services
  - Useable Data
  - Trusted Data
- Data
- Moving Forward



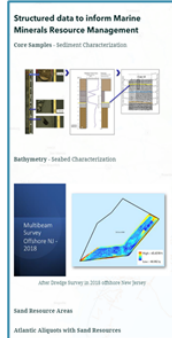
# MMIS Recap

Enterprise  
Relational  
Database

MMIS



MMIS Data,  
Services and  
Applications

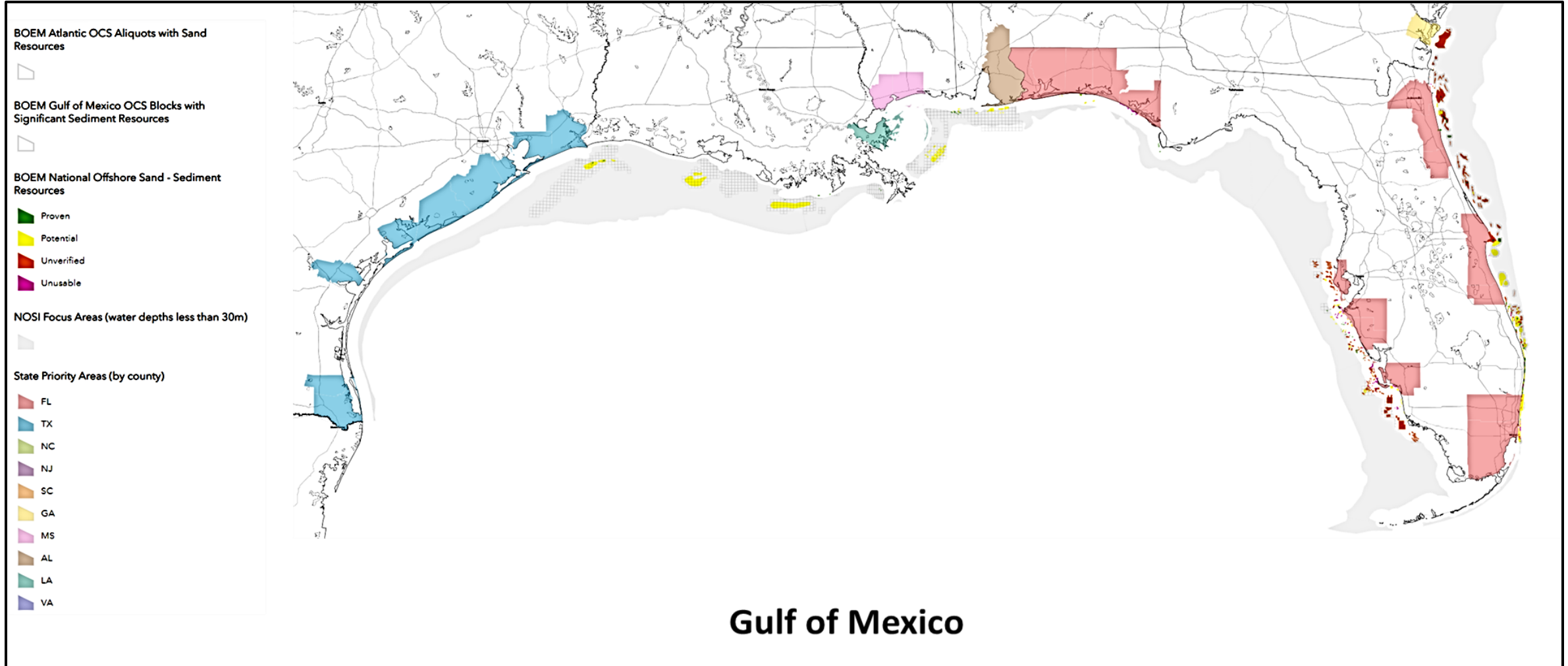


Structured data to inform Marine  
Minerals Resource Management  
Characterized  
marine mineral  
resource areas

## National Offshore Sand / Sediment Inventory (*Gulf Wide Sediment Inventory*)



# MMIS Recap continued





# MMIS Stakeholder Assessment Findings (Summary)

## What is working

### ○ Accessible

- Valuable for current users to find data aggregated into one location and increased discoverability

### ○ Usable

- Typical MMIS use is infrequent

### ○ Trusted

- Participants found data in the MMIS to be accurate. Highly valuable for users seeking trusted marine minerals data

## What can be better

- Some users have difficulties finding MMIS | accessing underlying data | are unfamiliar with present product functions
- The MMIS has a split user base: 1) users interested in accessing detailed geophysical / geological data 2) planning community interested in understanding and managing use conflicts
- Some questions about not-yet loaded data (missing data)

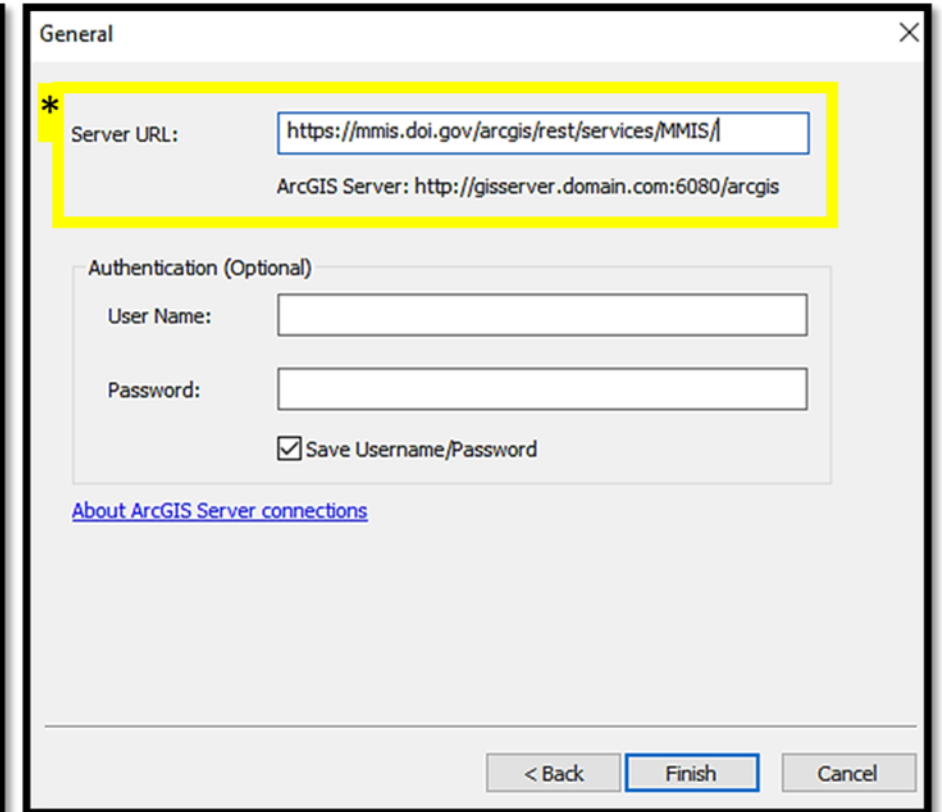
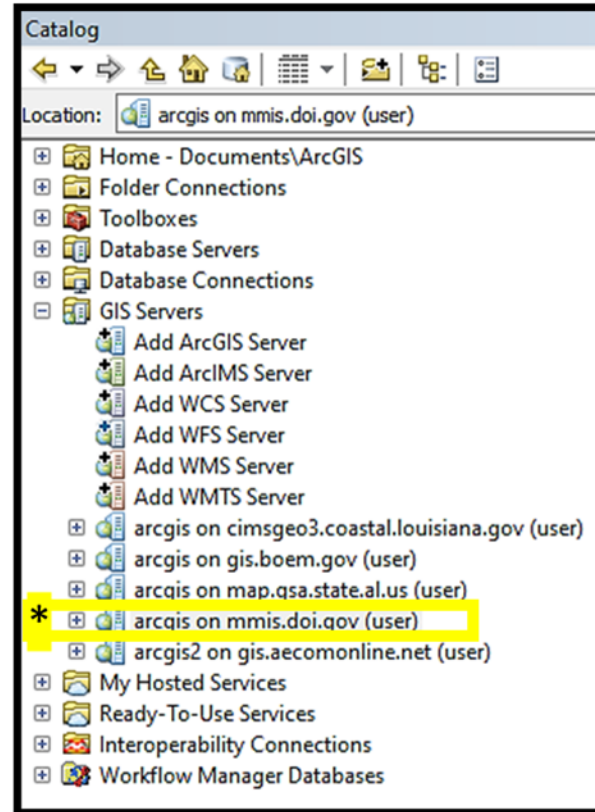


# MMIS Stakeholder Finding

## Accessible (1 of 2)

Some users have difficulties finding MMIS | accessing underlying data | are unfamiliar with present product functions

\*Please share the rest services link with your teams



# MMIS Stakeholder Finding

## Accessible (2 of 2)

Some users have difficulties finding MMIS | accessing underlying data | are unfamiliar with present product functions

**MMIS MARINE MINERALS INFORMATION SYSTEM**

Help Partners Feedback BOEM

Layers Download

Only visible MMIS layers will be downloaded. Click the "Select Area to Download" button and select an area of interest. Re-click to change your area. Select a format for download. When you are ready to download press the "Submit" button.

Select Area to Download

**Zoom in closer to draw**

Select a file format

- File Geodatabase
- Shapefile
- CSV

Select a raster format

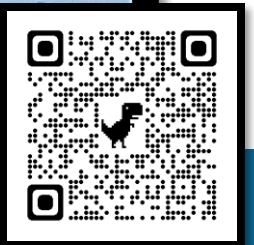
- TIFF
- IMG
- KMZ

Submit

The following resources may assist with the population and/or interpretation of MMIS data. The Partner Data Management Package includes the other three documents as well as additional resources specific to BOEM partners (Click to download)

- Metadata Template
- MMIS Data Dictionary
- MMIS Schema Template
- Partner Data Management Package

Please share the link with your team



# MMIS Stakeholder Finding

## Useable

The MMIS has a split user base – current users interested in accessing detailed geophysical and geological data and the planning community interested in understanding and managing other ocean use

- **MMIS Datasets associated with Study Reports**
  - [BOEM Marine Minerals Research and Studies](#)
  - [ESPIS | Environmental Studies Search Tool](#)
- **Registries / Discovery – MMIS datasets registered on:**





# MMIS Stakeholder Finding

## Trusted

Some questions about not-yet loaded data (missing data)

- The MMIS team is backlogged
  - Volume of data
  - # of projects
  - National / Regional scales
- MMIS Data Processing Priorities
  - Priority 1: Lease data
  - Priority 2: Study data



# Data

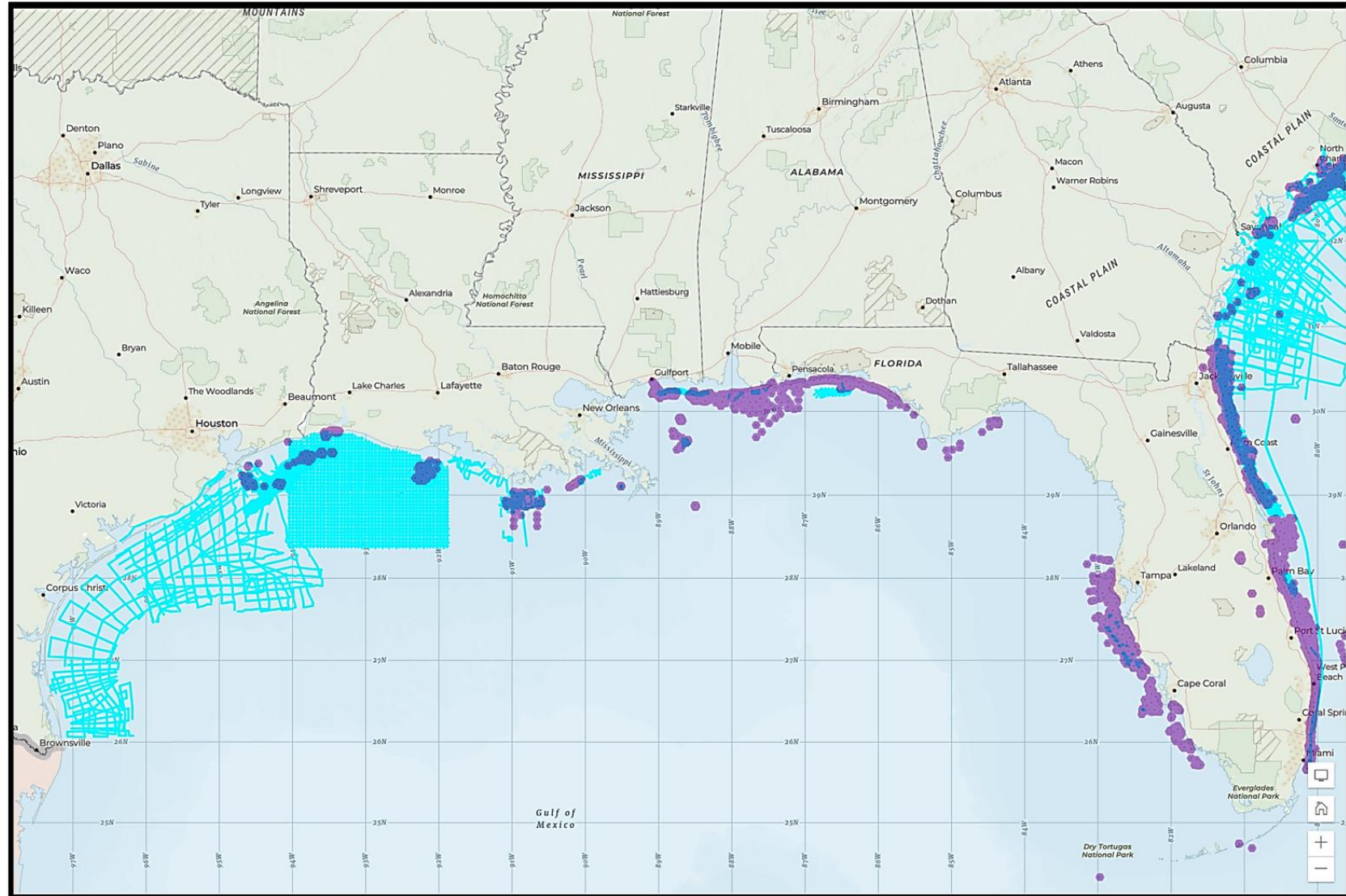
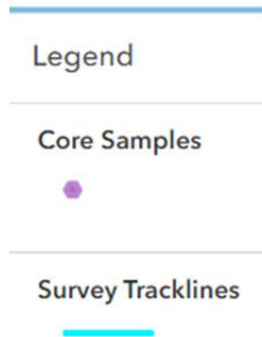
**We are working actively with our valued and trusted partners in preparing data for use and “connecting” data.**

- Coastal Protection and Restoration Authority / APTIM / Water Institute: Louisiana Sand Resource Database ([LASARD](#)) [consuming services]
- Florida Department of Environmental Protection: Regional Offshore Sand Inventory ([ROSSI](#)) [consuming services]
- Texas General Land Office: Texas Coastal Sediment Geodatabase ([TxSed](#)) [In progress with University of Texas for Geophysics]
- Geological Survey of Alabama: Offshore Alabama Sand Information System ([OASIS](#)) in progress data development and consuming services
- University of Southern Mississippi: BOEM in receipt of data, in the data queue
- U.S. Geological Survey and U.S. Army Corps of Engineers Jacksonville | Norfolk | Mobile
  - Collier Lease Planning
  - Survey Area Planning
- National Oceanic and Atmospheric Administration
  - Coastal Marine Ecological Classification Standard / Standard Ocean Mapping Protocol
  - National Centers for Environmental Information: Geophysical data archive
    - [Multibeam Report for BOEM-2017-L1](#)
    - [Multibeam Report for BOEM-2017-L2](#)
- Louisiana State University and more.....



# Data Products

MMIS Cores and Tracklines



# MMIS Moving Forward

- MMIS public outreach engagement venue – date tbd (nlt than 31May2023)
- Continue to advance and maintain a repository of applicable offshore marine mineral data of BOEM’s investments of historic and current project data
- Continue to work with our partners to improve meaningful data to support planning and operational needs, data discovery and accessibility, and partner usability

MMIS Value Driver	MMIS Team Commitment
Quality	Meet or exceed established levels
Responsiveness	Adjusting to meet the needs of our external partners
Sourcing	Establish and manage effective partnerships
Agility	Maintain the ability to change services / flex the data model (scaling them up or down) supporting new initiatives
Innovation	Develop new products and services to support BOEM and our partners





# MMIS

# MARINE MINERALS INFORMATION SYSTEM

# BOEM

Bureau of Ocean Energy  
Management

BOEM.gov



Lora Turner | [lora.turner@boem.gov](mailto:lora.turner@boem.gov) / [marineminerals@boem.gov](mailto:marineminerals@boem.gov) | 703-787-1747

