
Leasing Activities Information

MMS U.S. Department of the Interior
Minerals Management Service
Gulf of Mexico OCS Region

CENTRAL GULF OF MEXICO
LEASE SALE 169 - FINAL
MARCH 18, 1998

UNLEASED SPLIT BLOCKS

AND

UNLEASED ACREAGE OF BLOCKS

WITH ALIQUOTS AND IRREGULAR

PORTIONS UNDER LEASE

For Oil and Gas Leases in the Gulf of Mexico

- MMS -

INSTRUCTIONS TO BIDDERS

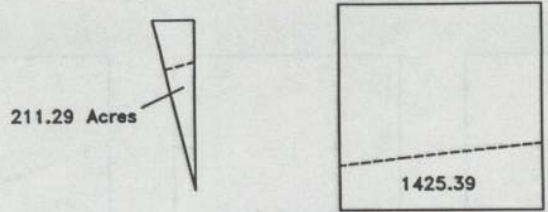
This package identifies the unleased Federal acreage along the offshore Louisiana, Mississippi, and Alabama/Federal boundary (split blocks) and unleased acreage of blocks with portions under lease. If a block is bid upon, all unleased acreage within that block must be bid upon.

Method of bidding - As described in paragraph 3 of the final Notice of Lease Sale 169.

Lists of available split blocks and blocks with portions under lease appear on pages 2 of 8 and 7 of 8.

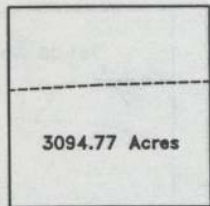
Individual block diagrams are arranged in numerical sequence.

Split and irregular blocks leased as a result of the sale will be legally described by using X and Y coordinates. Any specific questions pertaining to the unleased split blocks or those with portions under lease should be referred to Mr. Wallace Williams (504) 736-2772.

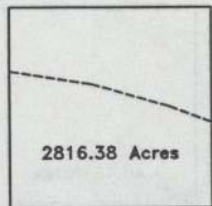


Sabine Pass Block 5

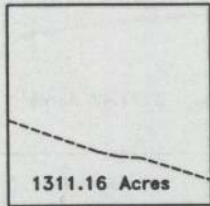
West Cameron Block 19



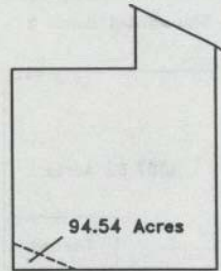
West Cameron Block 22



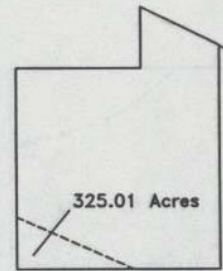
West Cameron Block 29



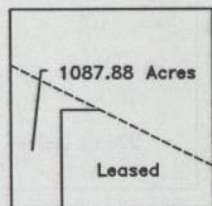
West Cameron Block 30



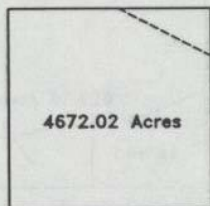
West Cameron Block 31



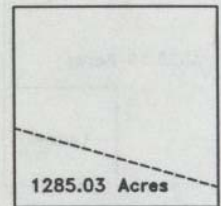
East Cameron Block 3



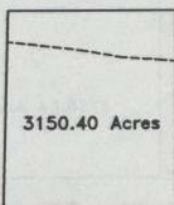
East Cameron Block 9



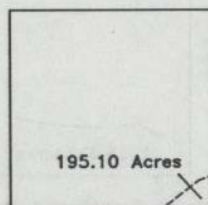
East Cameron Block 10



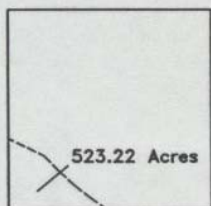
East Cameron Block 21



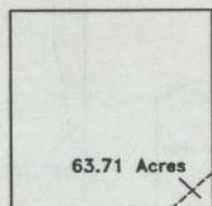
Vermillion Block 20



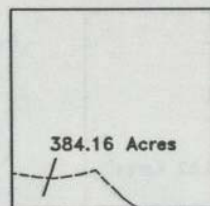
Eugene Island Block 9



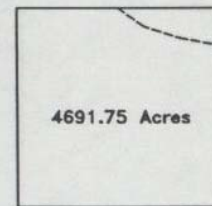
Eugene Island Block 11



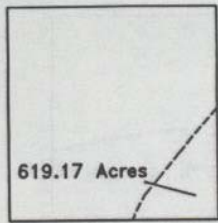
Eugene Island Block 12



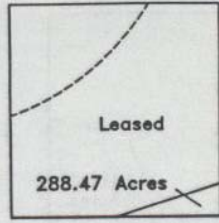
Eugene Island Block 12-A



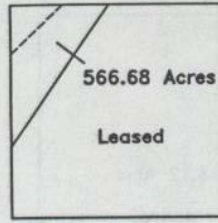
Eugene Island Block 23



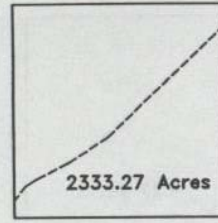
South Pass Block 39



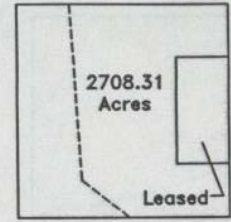
South Pass Block 57



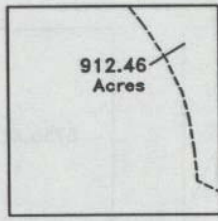
South Pass S.&E. Block 66



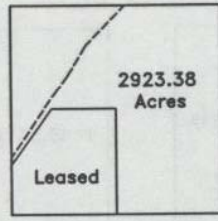
Main Pass Block 17



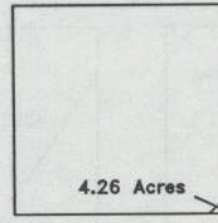
Main Pass Block 44



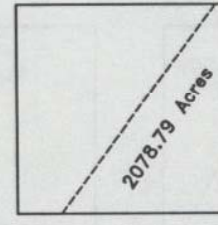
Main Pass Block 55



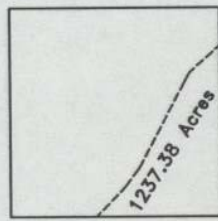
Main Pass Block 91



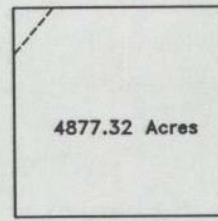
Breton Sound Block 24



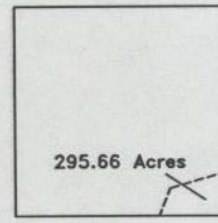
Breton Sound Block 25



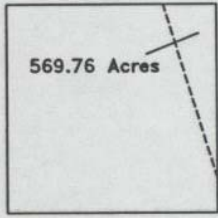
Breton Sound Block 39



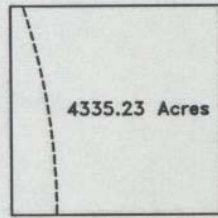
Breton Sound Block 40



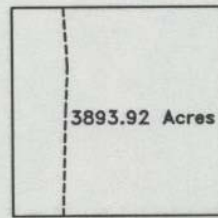
Breton Sound Block 44



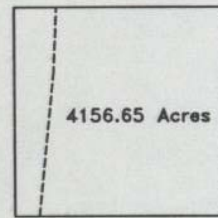
Chandeleur Block 1



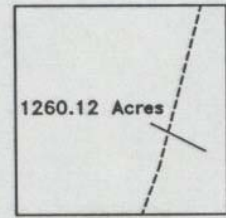
Chandeleur Block 3



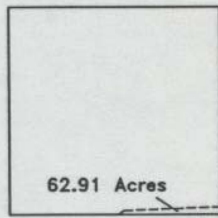
Chandeleur Block 5



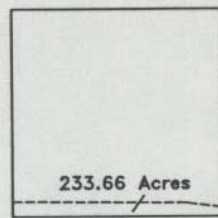
Chandeleur Block 8



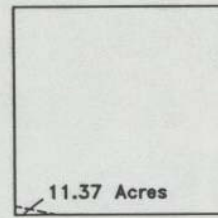
Chandeleur Block 16



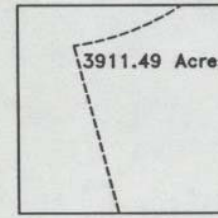
Mobile Block 765



Mobile Block 766



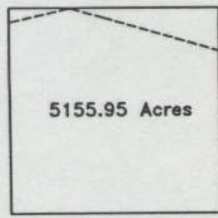
Mobile Block 767



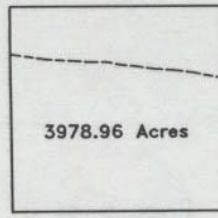
Mobile Block 809



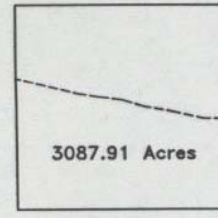
Mobile Block 811



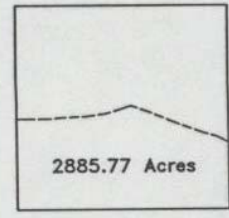
Mobile Block 812



Mobile Block 813



Mobile Block 814



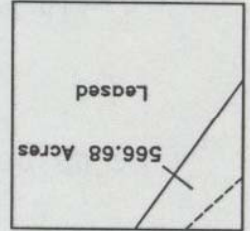
Mobile Block 815

UNLEASED ACREAGE OF BLOCKS WITH ALIQUOTS
AND IRREGULAR PORTIONS UNDER LEASE

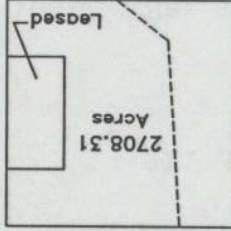
| West Cameron | Ship Shoal | South Pass |
|--------------------|--------------------|--------------------|
| 44 (1256.35 Ac.) | * 13 (4357.82 Ac.) | * 52 (533.24 Ac.) |
| 111 (3750.00 Ac.) | * 14 (3237.47 Ac.) | 56 (2999.85 Ac.) |
| | * 26 (3526.36 Ac.) | * 57 (288.47 Ac.) |
| East Cameron | * 64 (829.36 Ac.) | |
| | 71 (2500.00 Ac.) | South Pass |
| * 9 (1087.88 Ac.) | 87 (2500.00 Ac.) | South & East |
| 204 (3750.00 Ac.) | | Addition |
| | South Timbalier | |
| Vermilion | | * 66 (566.68 Ac.) |
| | 188 (3750.00 Ac.) | |
| 57 (2500.000 Ac.) | | Main Pass |
| 218 (4140.625 Ac.) | West Delta | |
| | South Addition | 43 (2029.03 Ac.) |
| South Marsh Island | | * 44 (2708.31 Ac.) |
| North Addition | 112 (3749.977 Ac.) | 57 (2497.275 Ac.) |
| | | 58 (2497.275 Ac.) |
| *221 (44.64 Ac.) | | * 91 (2923.38 Ac.) |
| *241 (619.64 Ac.) | | * 93 (466.39 Ac.) |
| *242 (3068.22 Ac.) | | 106 (2731.39 Ac.) |
| | | 127 (2497.275 Ac.) |
| Eugene Island | | *152 (22.47 Ac.) |
| | | |
| 93 (2500.00 Ac.) | | Breton Sound |
| 247 (2500.00 Ac.) | | |
| | | 54 (4448.27 Ac.) |
| | | |
| | | Mobile |
| | | |
| | | 911 (2880.00 Ac.) |

* Blocks with irregular portions under lease (See page 8).

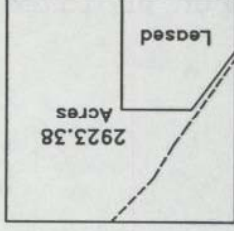
South Pass S&E Block 66



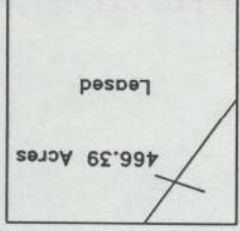
Main Pass Block 44



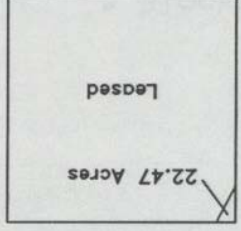
Main Pass Block 91



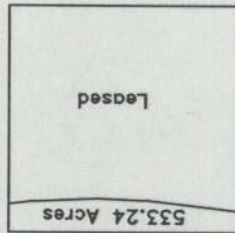
Main Pass Block 93



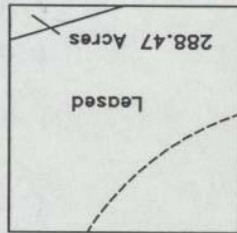
Main Pass Block 152



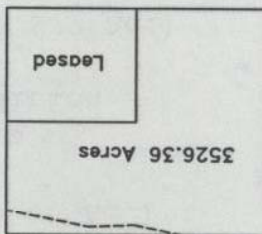
South Pass Block 52



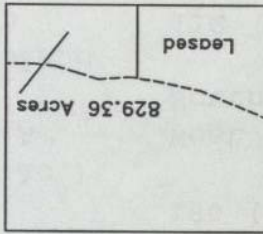
South Pass Block 57



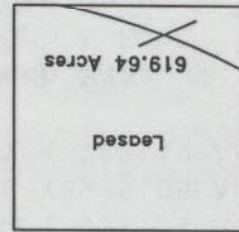
Ship Shoal Block 26



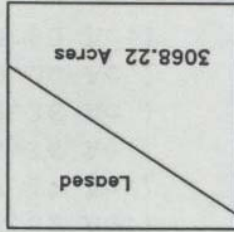
Ship Shoal Block 64



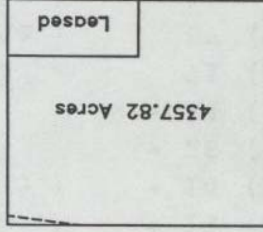
South Marsh Island N.A. Block 241



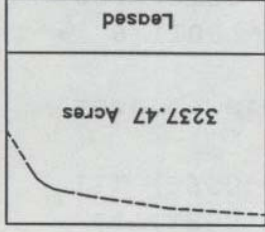
South Marsh Island N.A. Block 242



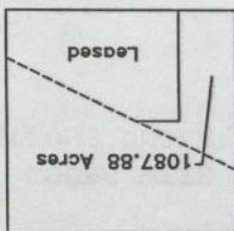
Ship Shoal Block 13



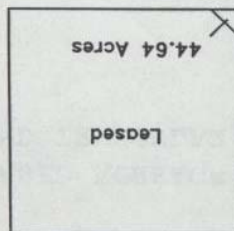
Ship Shoal Block 14

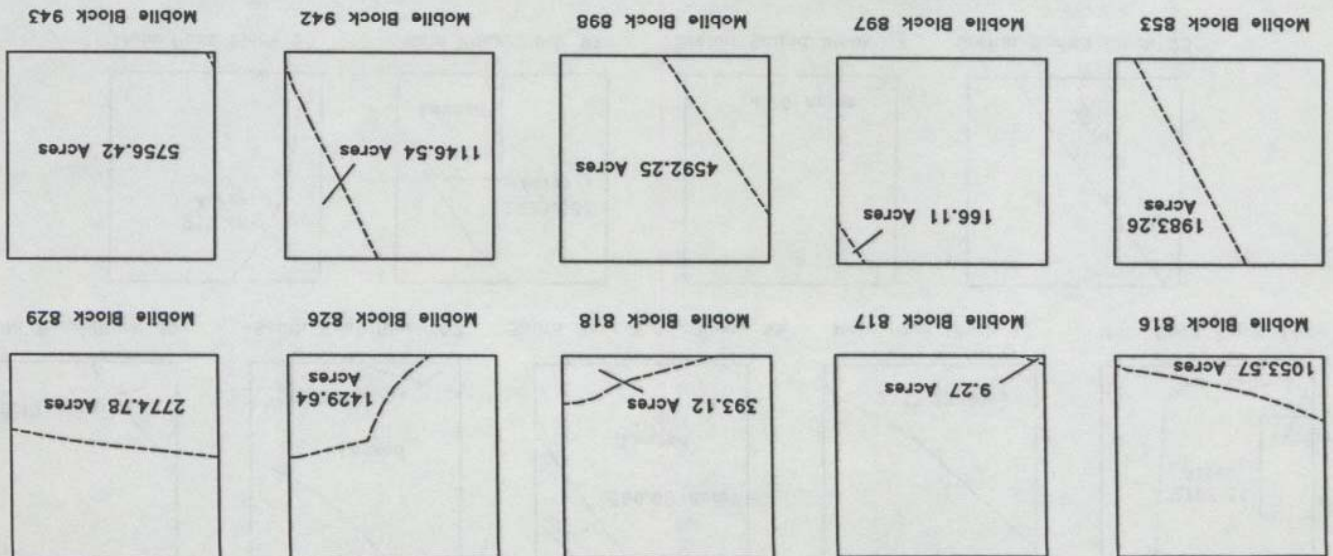


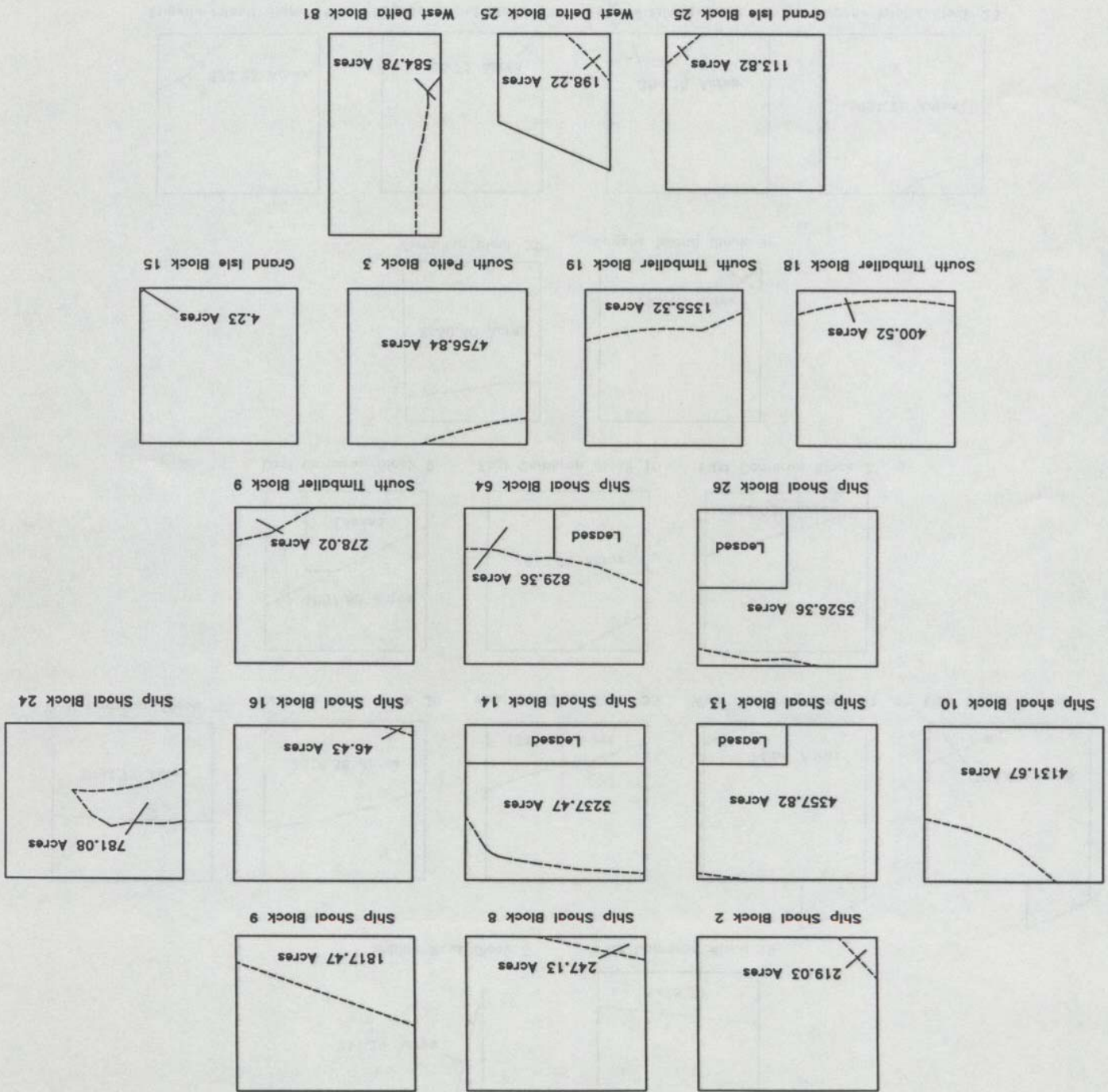
East Cameron Block 9



South Marsh Island N.A. Block 221







RECEIVED BY THE DIRECTOR OF THE BUREAU OF LAND MANAGEMENT

OFFICE OF THE DIRECTOR

WASHINGTON, D. C.

DEPARTMENT OF THE INTERIOR

1908

RECEIVED BY THE DIRECTOR

MARCH 18 1908

DEPT. OF THE INTERIOR

BUREAU OF LAND MANAGEMENT

RECEIVED BY THE DIRECTOR OF THE BUREAU OF LAND MANAGEMENT

RECEIVED BY THE DIRECTOR OF THE BUREAU OF LAND MANAGEMENT