

---

---

# *Leasing Activities Information*

**MMS** U.S. Department of the Interior  
Minerals Management Service  
Gulf of Mexico OCS Region

---

---

WESTERN GULF OF MEXICO  
FINAL NOTICE OF SALE 171  
AUGUST 26, 1998

UNLEASED SPLIT BLOCKS

AND

UNLEASED ACREAGES OF BLOCKS

WITH ALIQUOTS AND IRREGULAR

PORTIONS UNDER LEASE

For Oil and Gas Leases in the Gulf of Mexico

**-MMS-**

## INSTRUCTIONS TO BIDDERS

This package identifies the unleased Federal acreage along the offshore Texas/Federal boundary and unleased acreages of blocks with portions under lease. If a block is bid upon, all unleased acreage within that block must be bid upon.

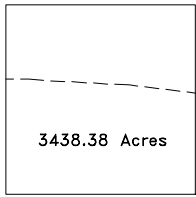
Lists of available split blocks and blocks with portions under lease appear on pages 2 of 8 and 7 of 8.

Individual block diagrams are arranged northerly to southerly and are in numerical sequence.

Split and irregular blocks leased as a result of the sale will be legally described by using X and Y coordinates. Any specific questions pertaining to the unleased split blocks or those with portions under lease should be referred to Mr. Wallace Williams (504) 736-2772.

**UNLEASED SPLIT BLOCK BOUNDARY  
BY MAP AREA AND BLOCK NUMBER SEQUENCE**

High Island	Matagorda Island	North Padre Island
20	557	883
23	558	899
31	592	904
32	626	919
33	658	924
53	663	939
54	689	944
55	690	959
63	695	964
64	718	965
96	719	980
97		985
	Mustang Island	1001
Galveston	724	1006
103	744	1007
145	745	1022
150	750	
188	751	
189	770	South Padre Island
190	775	1027
214	776	1043
220	793	1044
221	798	1049
245	799	1085
274	816	1090
275	821	1105
280	822	1110
311	864	1126
	880	1131
		1146
Brazos		1166
335		
367		Port Isabel
374		945
400		989
401		
402		
409		
410		
411		
448		
449		
477		
479		
489		



High Island Block 20



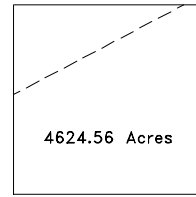
High Island Block 23



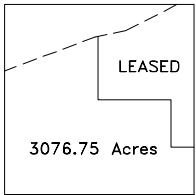
High Island Block 31



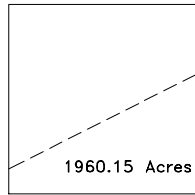
High Island Block 32



High Island Block 33



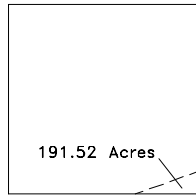
High Island Block 53



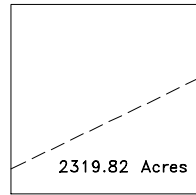
High Island Block 54



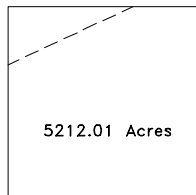
High Island Block 55



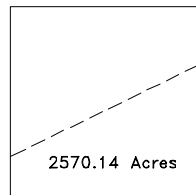
High Island Block 63



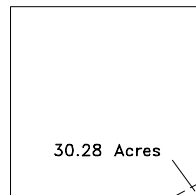
High Island Block 64



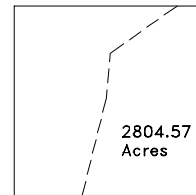
High Island Block 96



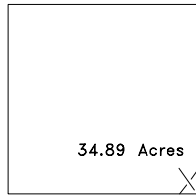
High Island Block 97



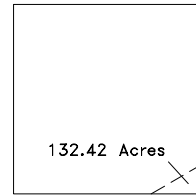
Galveston Block 103



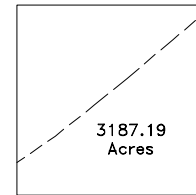
Galveston Block 145



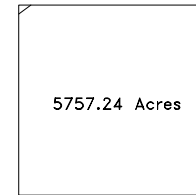
Galveston Block 150



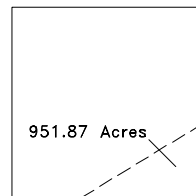
Galveston Block 188



Galveston Block 189



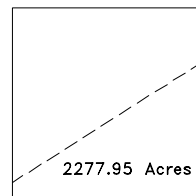
Galveston Block 190



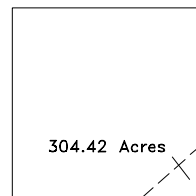
Galveston Block 214



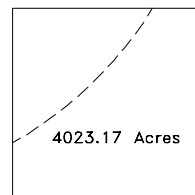
Galveston Block 220



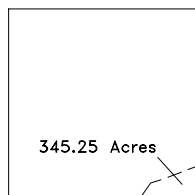
Galveston Block 221



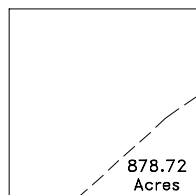
Galveston Block 245



Galveston Block 274



Galveston Block 275



Galveston Block 280







**UNLEASED ACREAGES OF BLOCKS WITH ALIQUOTS AND IRREGULAR  
PORTIONS UNDER LEASE**

High Island

\* 53 (3076.75 AC.) W1/2; W1/2SE1/4; W1/2NE1/4SE1/4;  
SE1/4SE1/4  
136 (2520.00 AC.) NW1/4; W1/2SW1/4; W1/2NE1/4SW1/4;  
N1/2SE1/4SW1/4  
138 (2880.00 AC.) S1/2  
155 (2880.00 AC.) E1/2  
161 (3690.00 AC.) E1/2; NE1/4NE1/4NW1/4; SE1/4NE1/4SW1/4;  
NE1/4SW1/4SW1/4; S1/2SW1/4SW1/4;  
SE1/4SW1/4

Galveston

\*191 (1290.54 AC.) Landward of 8(g) line  
295 (990.00 AC.) N1/2NE1/4NE1/4; SE1/4SW1/4NE1/4;  
1/2SE1/4NE1/4; E1/2NW1/4SE1/4;  
NE1/4SE1/4  
296 (1260.00 AC.) NW1/4NE1/4NW1/4; NW1/4NW1/4;  
N1/2SW1/4NW1/4; W1/2SW1/4SW1/4;  
SE1/4SW1/4SW1/4; S1/2SE1/4SW1/4;  
S1/2SW1/4SE1/4

Brazos

452 (2880.00 AC.) W1/2

Matagorda Island

\*529 ( 978.64 AC.) Landward of 8(g) line  
\*634 (1321.17 AC.) Landward of 8(g) line  
\*688 (2667.72 AC.) Landward of 8(g) line

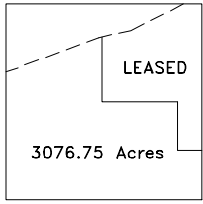
Mustang Island

A-2 (720.00 AC.) N1/2NW1/4NE1/4; SW1/4NW1/4NE1/4;  
NE1/4NW1/4; NE1/4SE1/4NW1/4

\* Blocks with irregular portions under lease. (See page 8)

Any specific questions pertaining to the unleased acreage  
of blocks with aliquots and irregular portions under lease  
should be referred to Mr. Wallace Williams (504) 736-2772.

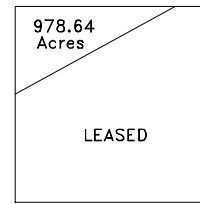




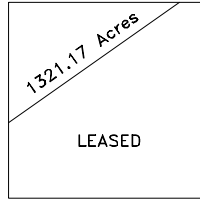
High Island Block 53



Galveston Block 191



Matagorda Island Block 529



Matagorda Island Block 634



Matagorda Island Block 688