



U.S. Department of the Interior  
Minerals Management Service  
Gulf of Mexico OCS Region

# Leasing Activities Information

---

---

## CENTRAL GULF OF MEXICO LEASE SALE 178, PART 1 March 28, 2001

### UNLEASED SPLIT BLOCKS and UNLEASED ACREAGE OF BLOCKS WITH ALIQUOTS AND IRREGULAR PORTIONS UNDER LEASE

For Oil and Gas Leases in the Gulf of Mexico

— **MMS** —



UNLEASED SPLIT BLOCKS  
and  
UNLEASED ACREAGE OF BLOCKS WITH ALIQUOTS AND IRREGULAR PORTIONS  
UNDER LEASE

**INSTRUCTION TO BIDDERS**

This package identifies the unleased Federal acreage along the offshore Louisiana, Mississippi, and Alabama/Federal boundary (split blocks), and the unleased acreage of blocks with portions under lease. If a block is bid upon, all unleased acreage within that block must be bid upon.

Method of bidding – As described in the final Notice of Lease Sale 178, Part 1.

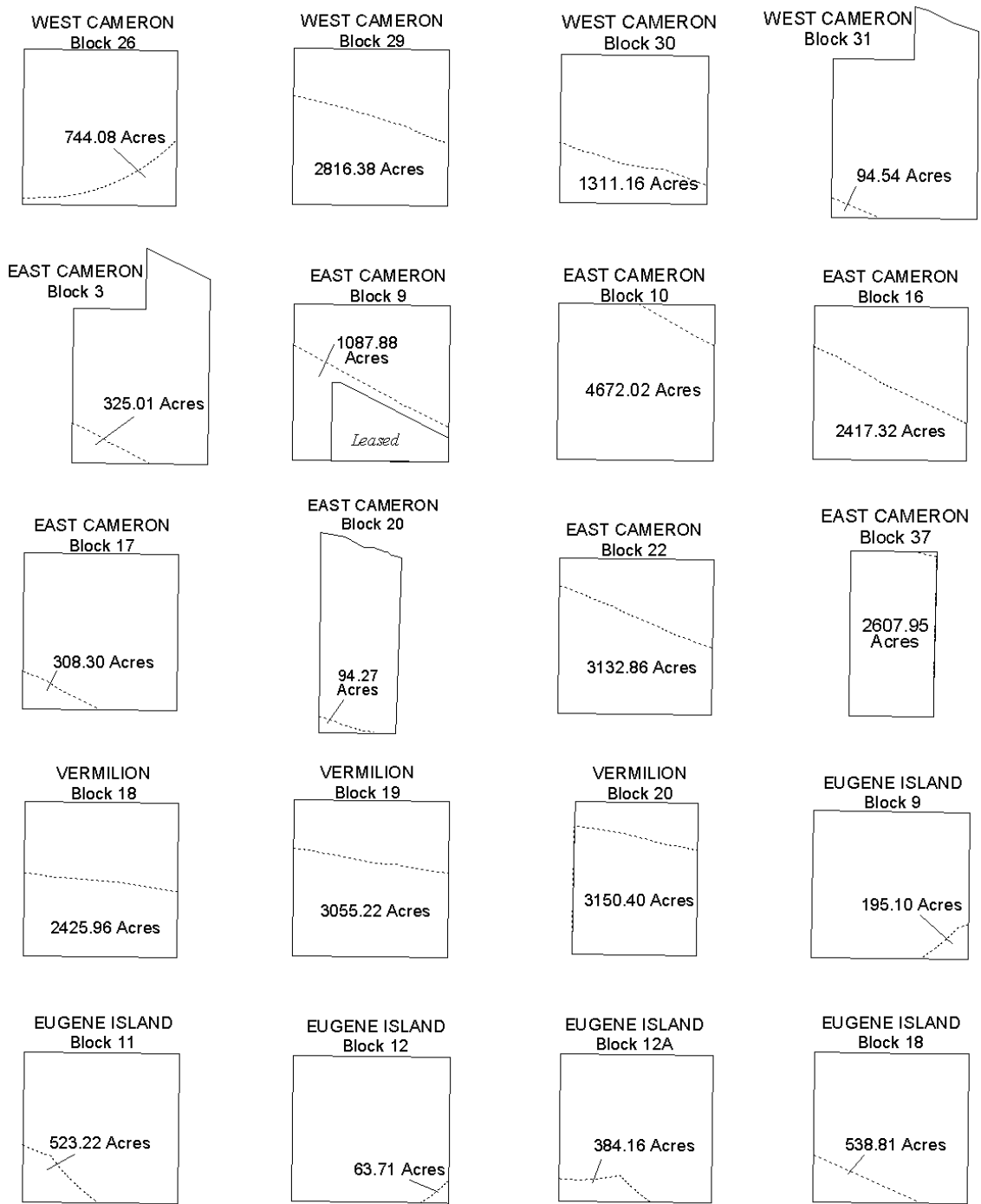
Lists of available split blocks and blocks with portions under lease appear on pages 2 and 8.

Split and irregular blocks leased as a result of the sale will be legally described by using X and Y coordinates. Any specific questions pertaining to the unleased split blocks, or those with portions under lease, should be referred to Charles Hill (504) 736-2795.

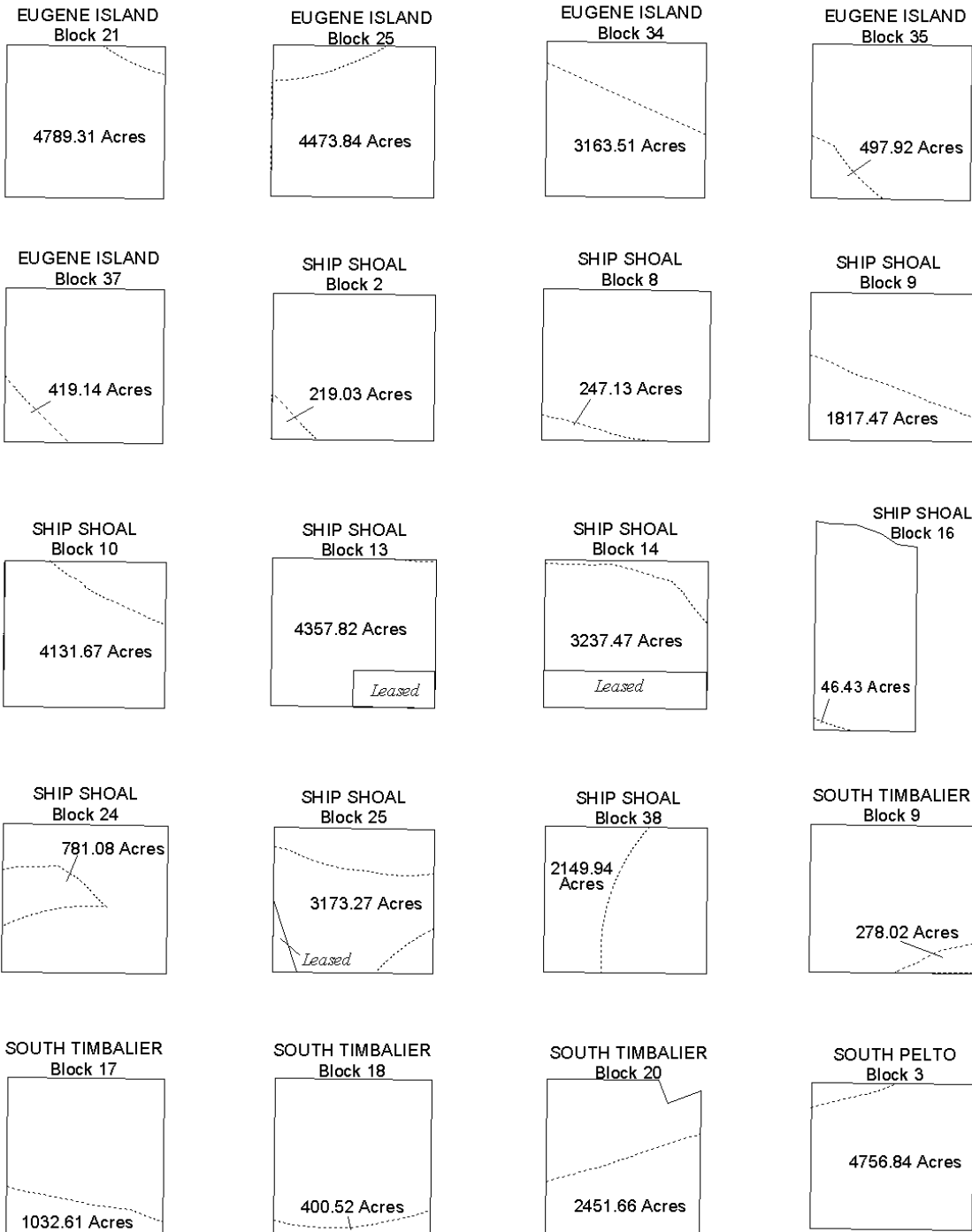
**CENTRAL GULF OF MEXICO LEASE SALE 178, PART 1**  
Split Blocks List By Map Area And Block Number Sequence

<u>MAP AREA</u>	<u>BLOCK</u>	<u>MAP AREA</u>	<u>BLOCK</u>	<u>MAP AREA</u>	<u>BLOCK</u>
West Cameron	26	South Timbalier	9	Main Pass	6
LA1	29	LA6	17	LA10	17
	30		18		18
	31		20		44
					55
East Cameron	3	South Pelto	3	Breton Sound	24
LA2	9	LA6B		LA10B	25
	10				39
	16	Bay Marchand	4		40
	17	LA6C	5		42
	20				43
	22				44
	37	Grand Isle	15		
		LA7	24	Chandeleur	1
Vermilion	18		25	LA11	3
LA3	19				5
	20				8
		West Delta	18		15
		LA8	19		16
Eugene Island	9		20		27
LA4	11		25		
	12		26	Sabine Pass	3
	12-A		36	LA12	5
	18		56		
	21		80		
	25		81	Mobile	814
	34			NH16-04	815
	35				816
	37	South Pass	17		817
		LA9	34		818
Ship Shoal	2		35		829
LA5	8		39		853
	9		42		862
	10		43		897
	13		57		898
	14				942
	16				943
	24	South Pass South &	66		987
	25	East Addition			
	38	LA9A			

**CENTRAL GULF OF MEXICO LEASE SALE 178, PART 1**  
**Split Blocks Diagrams**

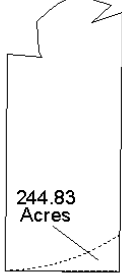


**CENTRAL GULF OF MEXICO LEASE SALE 178, PART 1**  
 Split Blocks Diagrams *(continued)*

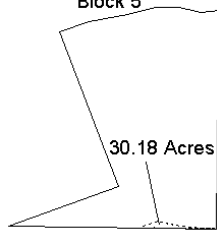


**CENTRAL GULF OF MEXICO LEASE SALE 178, PART 1**  
 Split Blocks Diagrams *(continued)*

BAY MARCHAND  
Block 4



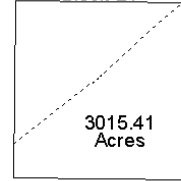
BAY MARCHAND  
Block 5



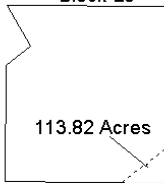
GRAND ISLE  
Block 15



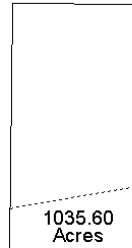
GRAND ISLE  
Block 24



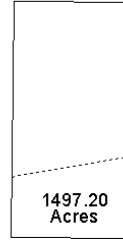
GRAND ISLE  
Block 25



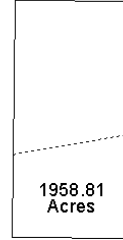
WEST DELTA  
Block 18



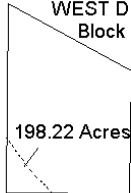
WEST DELTA  
Block 19



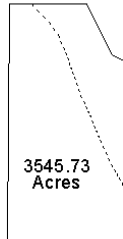
WEST DELTA  
Block 20



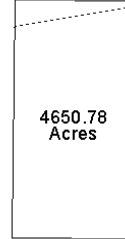
WEST DELTA  
Block 25



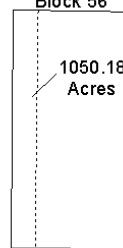
WEST DELTA  
Block 26



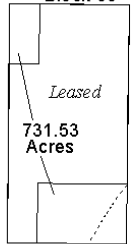
WEST DELTA  
Block 36



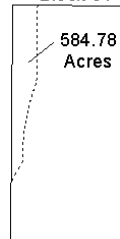
WEST DELTA  
Block 56



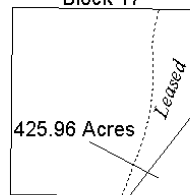
WEST DELTA  
Block 80



WEST DELTA  
Block 81



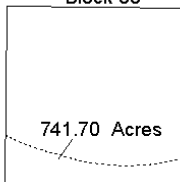
SOUTH PASS  
Block 17



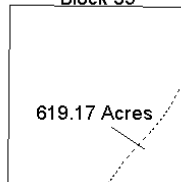
SOUTH PASS  
Block 34



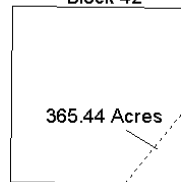
SOUTH PASS  
Block 35



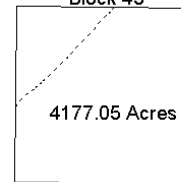
SOUTH PASS  
Block 39



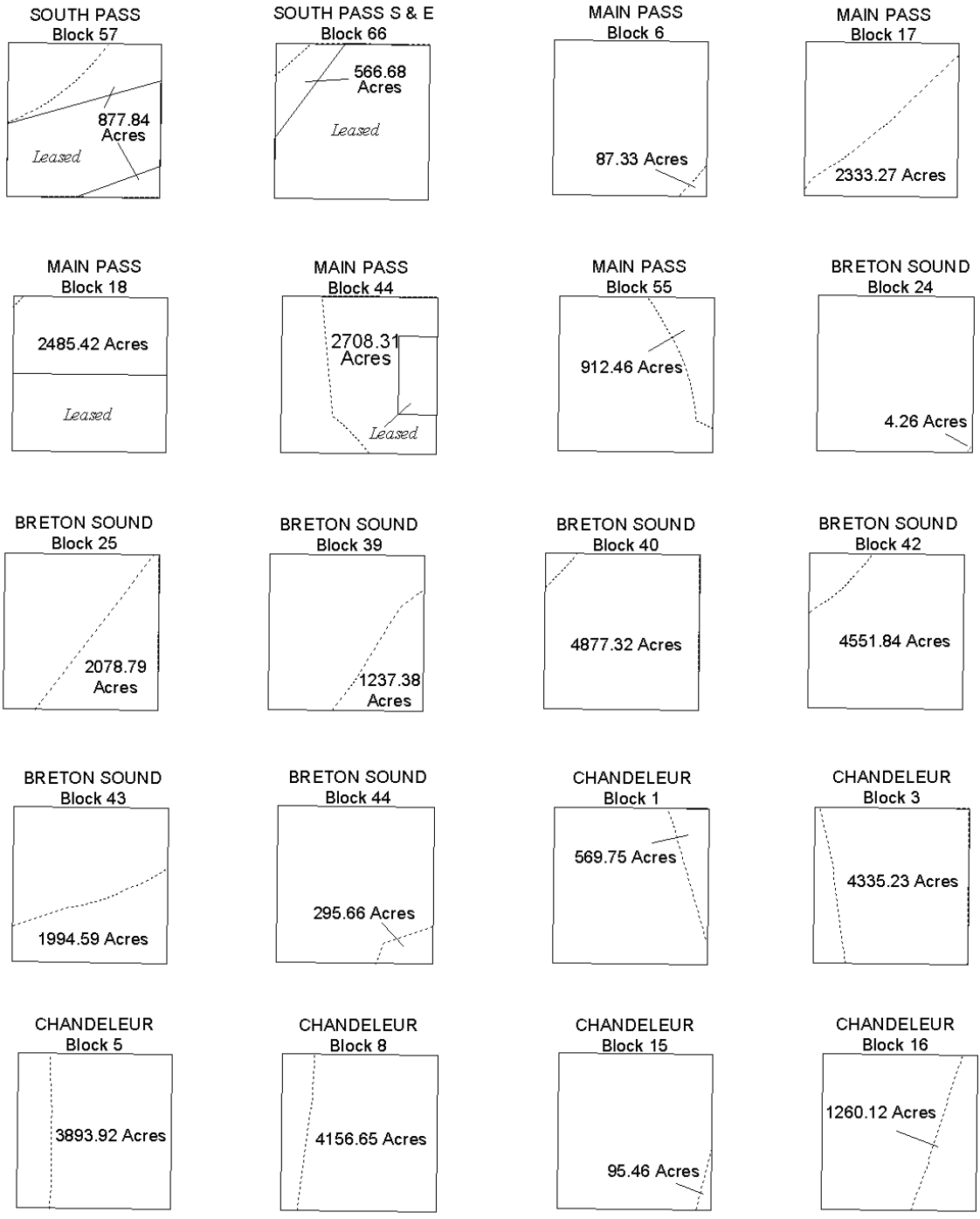
SOUTH PASS  
Block 42



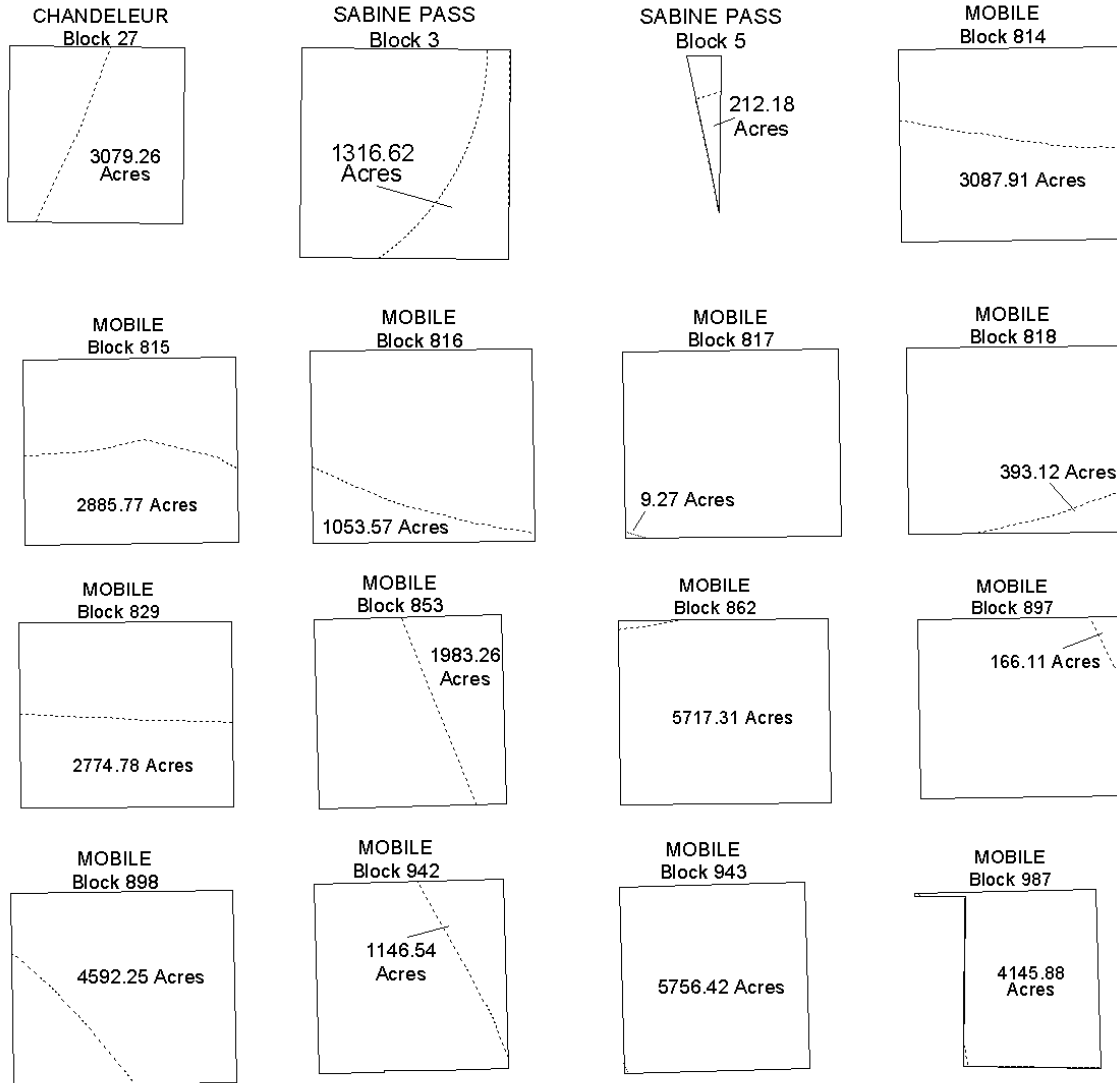
SOUTH PASS  
Block 43



**CENTRAL GULF OF MEXICO LEASE SALE 178, PART 1**  
 Split Blocks Diagrams *(continued)*



**CENTRAL GULF OF MEXICO LEASE SALE 178, PART 1**  
 Split Blocks Diagrams *(continued)*





**CENTRAL GULF OF MEXICO LEASE SALE 178, PART 1**  
 Available Acreage of Blocks with Aliquots and Irregular Portions Under Lease  
 Listed by Map Area and Block Number Sequence  
 (Acreage rounded to nearest hundredth)

**LA1 – West Cameron**

56 S ½, 2500.00 Ac.  
 192 N ½, 2500.00 Ac.

**LA2 – East Cameron**

9\* 1087.88 Ac.  
 194\* 4687.50 Ac.  
 204 \* 3750.00 Ac.

**LA3 – Vermilion**

104\* 312.50 Ac.  
 217\* 3437.50 Ac.  
 218\* 4140.63 Ac.  
 226\* 3281.25 Ac.

**LA3D – South Marsh  
 Island North Addition**

220\* 2288.53 Ac.  
 221\* 44.64 Ac.  
 230\* 792.05 Ac.  
 231\* 3592.72 Ac.  
 241\* 619.64 Ac.

**LA4 - Eugene Island**

64 S ½, 2500 Ac.  
 93 W ½, 2500.00 Ac.  
 253\* 156.25 Ac.

**LA4A – Eugene Island  
 South Addition**

287\* 1250.00 Ac.  
 301 N ½, 2500.00 Ac.

**LA5 – Ship Shoal**

13\* 4357.82 Ac.  
 14\* 3237.47 Ac.  
 25\* 3173.27 Ac.  
 71 E ½, 2500.00 Ac.  
 87 S ½, 2500.00 Ac.  
 94\* 4375.00 Ac.  
 117 S ½, 2500.00 Ac.  
 118 S ½, 2500.00 Ac.  
 120 W ½, 2500.00 Ac.

**LA5A – Ship Shoal South Addition**

291\* 1250.00 Ac.

**LA7 – Grand Isle**

21\* 1794.00 Ac.  
 44 S ½, 2500.00 Ac.  
 49\* 2269.95 Ac.  
 52 S ½, 2500.00 Ac.

**LA8 – West Delta**

80\* 731.53 Ac.

**LA8A – West Delta South Addition**

111\* 3749.98 Ac.

**LA9 – South Pass**

17\* 425.96 Ac.  
 52\* 533.23 Ac.  
 57\* 877.84 Ac.

**LA9A – South Pass South  
 & East Addition**

66\* 566.68 Ac.

**LA10 – Main Pass**

18\* 2485.42 Ac.  
 44\* 2708.31 Ac.  
 58 S ½, 2497.28 Ac.  
 100\* 1638.84 Ac.  
 107\* 1716.88 Ac.  
 127 S ½, 2497.28 Ac.  
 152\* 22.47 Ac.

**LA10B – Breton Sound**

55 N ½, 2497.27 Ac.

**NH16-04 – Mobile**

911 S ½, 2880.00 Ac.

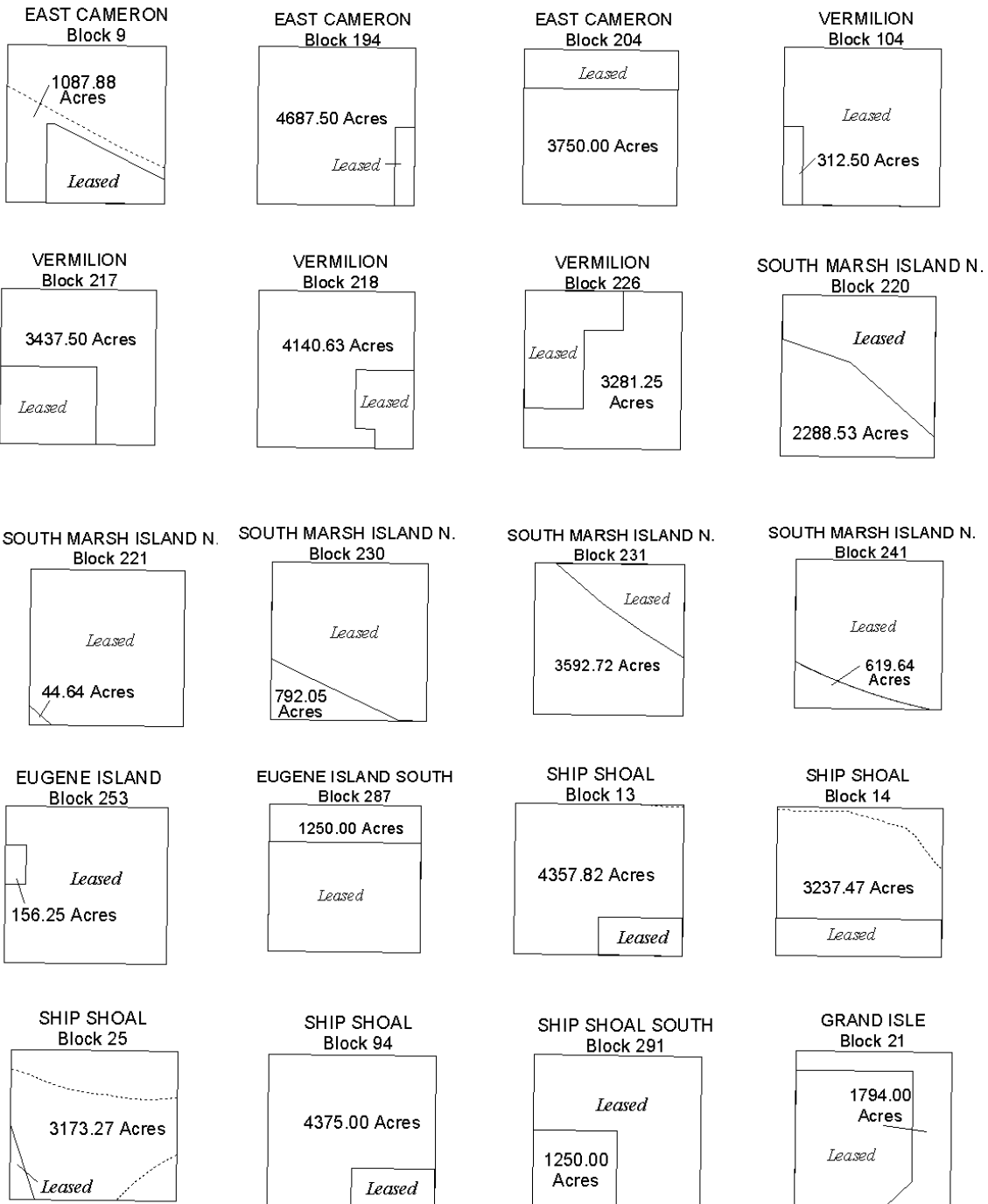
**NH16-10 – Mississippi  
 Canyon**

128\* 4320.00 Ac.

*\* Blocks with irregular portions under lease or otherwise requiring a diagram – see diagrams next page.*

# CENTRAL GULF OF MEXICO LEASE SALE 178, PART 1

Diagrams of Blocks with Aliquots and Irregular Portions Under Lease



**CENTRAL GULF OF MEXICO LEASE SALE 178, PART 1**  
 Diagrams of Blocks with Aliquots and Irregular Portions Under Lease (*continued*)

