
MMS

U.S. Department of the Interior
Minerals Management Service
Gulf of Mexico OCS Region

Leasing Activities Information

**WESTERN GULF OF MEXICO
LEASE SALE 184
August 21, 2002**

**UNLEASED SPLIT BLOCKS
and
AVAILABLE UNLEASED ACREAGE OF BLOCKS
WITH
ALIQUOTS AND IRREGULAR PORTIONS
UNDER LEASE OR DEFERRED**

For Oil and Gas Leases in the Gulf of Mexico

— MMS —



**UNLEASED SPLIT BLOCKS
and
AVAILABLE UNLEASED ACREAGE OF BLOCKS
WITH
ALIQUOTS AND IRREGULAR PORTIONS
UNDER LEASE OR DEFERRED**

INSTRUCTION TO BIDDERS

This package identifies the unleased Federal acreage along the offshore Texas/Federal boundary and available unleased acreages of blocks with portions under lease or deferred. If a block is bid upon, all available unleased acreage within that block must be bid upon.

Method of bidding – As described in the final Notice of Lease Sale 184.

Split and irregular blocks leased as a result of the sale will be legally described by using X and Y coordinates. Any specific questions pertaining to the unleased split blocks, or those with portions under lease, should be referred to Charles Hill (504) 736-2795.

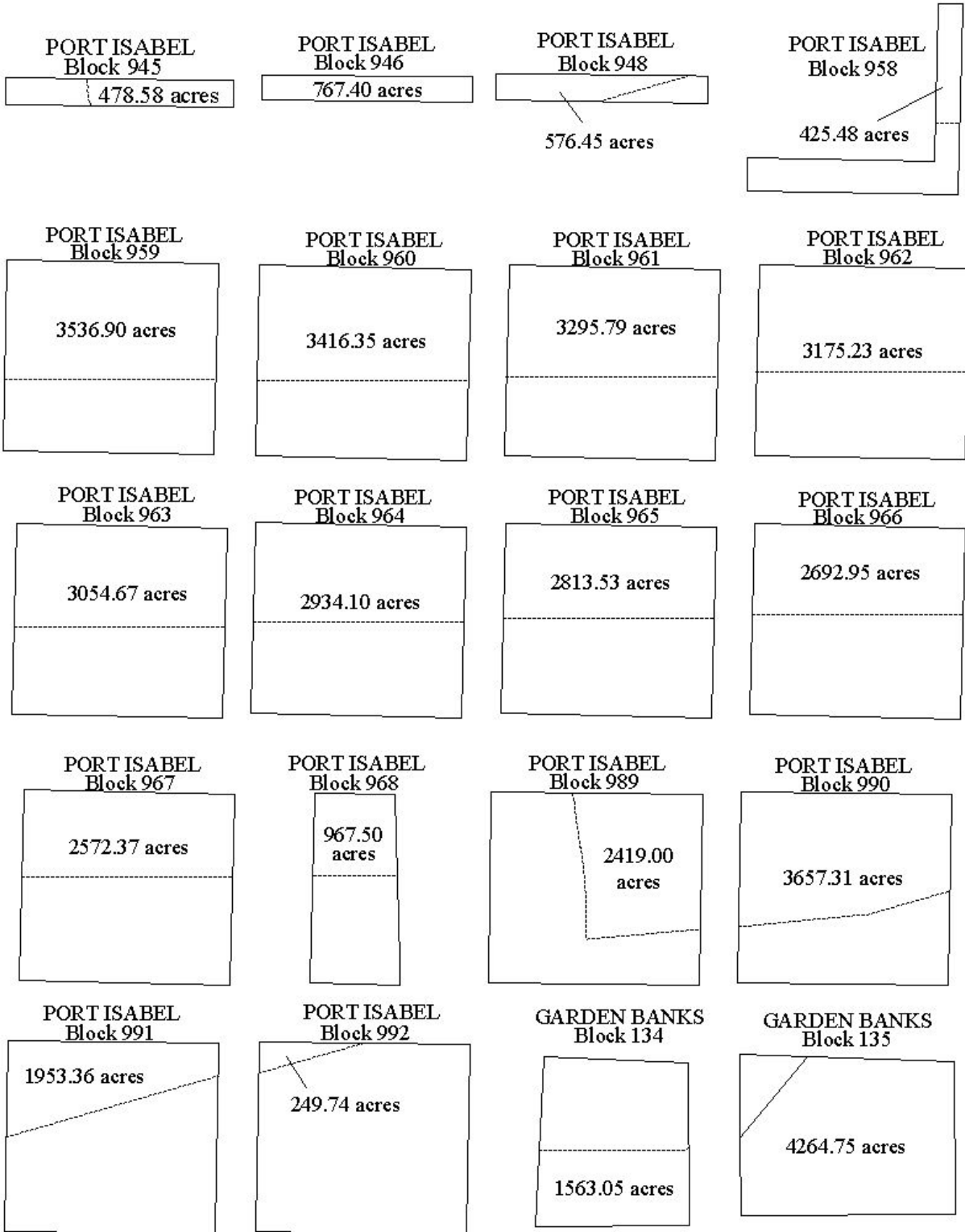
WESTERN GULF OF MEXICO LEASE SALE 184
Blocks List By Map Area And Block Number Sequence

| <u>MAP AREA NAME & NUMBER</u> | <u>BLOCK</u> | <u>MAP AREA NAME & NUMBER</u> | <u>BLOCK</u> | <u>MAP AREA NAME & NUMBER</u> | <u>BLOCK</u> |
|---------------------------------------|--------------|---------------------------------------|--------------|---------------------------------------|--------------|
| Port Isabel | 945 | Alaminos Canyon | 1000 | Sigsbee | 290 |
| NG14-06 | 946 | NG15-04 | 1001 | Escarpment | 291 |
| | 948 | (continued) | 1002 | NG15-08 | 292 |
| | 958 | | 1003 | (continued) | 293 |
| | 959 | | 1004 | | 294 |
| | 960 | | 1005 | | 295 |
| | 961 | | 1006 | | 296 |
| | 962 | | 1007 | | 297 |
| | 963 | | 1008 | | 298 |
| | 964 | | 1009 | | 342 |
| | 965 | | | | 343 |
| | 966 | Keathley Canyon | 969 | | 344 |
| | 967 | NG15-05 | 970 | | 345 |
| | 968 | | 971 | | 346 |
| | 989 | | 972 | | 347 |
| | 990 | | 973 | | 348 |
| | 991 | | 974 | | 349 |
| | 992 | | 975 | | |
| | | | 976 | South Padre Island | 1027 |
| Garden Banks | 134 | | 977 | TX1 | 1043 |
| NG15-02 | 135 | | 978 | | 1044 |
| | | | 979 | | 1049 |
| | | | 980 | | 1064 |
| Alaminos Canyon | 925 | | | | 1069 |
| NG15-04 | 926 | | | | 1070 |
| | 927 | Sigsbee Escarpment | 12 | | 1085 |
| | 928 | NG15-08 | 13 | | 1090 |
| | 929 | | 14 | | 1105 |
| | 930 | | 58 | | 1110 |
| | 931 | | 59 | | 1126 |
| | 932 | | 60 | | 1130 |
| | 933 | | 104 | | 1131 |
| | 934 | | 105 | | 1146 |
| | 935 | | 106 | | 1151 |
| | 936 | | 150 | | 1166 |
| | 937 | | 151 | | |
| | 938 | | 195 | | |
| | 939 | | 196 | | |
| | 940 | | 240 | | |
| | 941 | | 241 | | |
| | 945 | | 285 | | |
| | 992 | | 286 | | |
| | 993 | | 287 | | |
| | 996 | | 288 | | |
| | | | 289 | | |

WESTERN GULF OF MEXICO LEASE SALE 184
 Blocks List By Map Area And Block Number Sequence (*continued*)

| <u>MAP AREA NAME & NUMBER</u> | <u>BLOCK</u> | <u>MAP AREA NAME & NUMBER</u> | <u>BLOCK</u> | <u>MAP AREA NAME & NUMBER</u> | <u>BLOCK</u> |
|---------------------------------------|--------------|---------------------------------------|--------------|---------------------------------------|--------------|
| South Padre Island | A84 | Mustang Island | 864 | Galveston | 103 |
| East | A85 | TX3 | 879 | TX6 | 145 |
| TX1A | A86 | (<i>continued</i>) | 880 | | 150 |
| | A87 | | | | 188 |
| | A89 | Matagorda Island | 526 | | 189 |
| | A90 | TX4 | 527 | | 214 |
| | 1160 | | 557 | | 220 |
| | 1161 | | 558 | | 221 |
| | 1162 | | 592 | | 222 |
| | | | 599 | | 242 |
| North Padre Island | 883 | | 601 | | 245 |
| TX2 | 904 | | 626 | | 250 |
| | 919 | | 634 | | 251 |
| | 924 | | 658 | | 275 |
| | 939 | | 663 | | 280 |
| | 944 | | 688 | | 281 |
| | 959 | | 689 | | 304 |
| | 964 | | 690 | | 305 |
| | 965 | | 695 | | 311 |
| | 980 | | 718 | | 312 |
| | 985 | | 719 | | |
| | 1001 | | | High Island | 23 |
| | 1006 | Brazos | 335 | TX7 | 31 |
| | 1007 | TX5 | 364 | | 55 |
| | 1022 | | 365 | | 63 |
| | | | 367 | | 64 |
| Mustang Island | 724 | | 374 | | 71 |
| TX3 | 744 | | 399 | | 96 |
| | 745 | | 400 | | 97 |
| | 750 | | 401 | | 98 |
| | 751 | | 402 | | 105 |
| | 770 | | 409 | | 135 |
| | 775 | | 410 | | 136 |
| | 776 | | 411 | | 155 |
| | 798 | | 438 | | |
| | 821 | | 448 | High Island South | A-513 |
| | 822 | | 449 | TX7B | |
| | 838 | | 450 | | |
| | 842 | | 452 | High Island | A-366 |
| | 843 | | 477 | East & South | A-383 |
| | 859 | | 479 | TX7C | A-399 |
| | | | 489 | | A-401 |

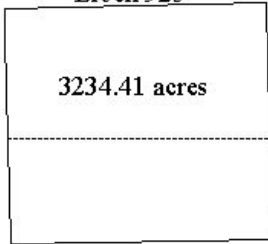
WESTERN GULF OF MEXICO LEASE SALE 184
Block Diagrams



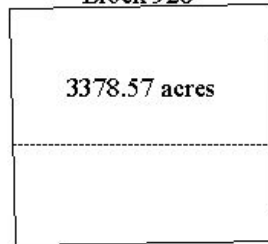
WESTERN GULF OF MEXICO LEASE SALE 184

Block Diagrams (continued)

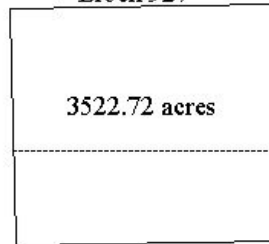
**ALAMINOS CANYON
Block 925**



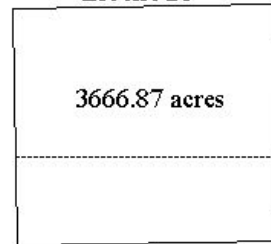
**ALAMINOS CANYON
Block 926**



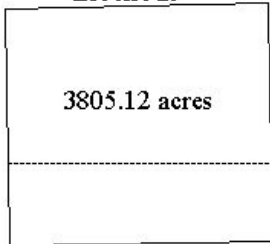
**ALAMINOS CANYON
Block 927**



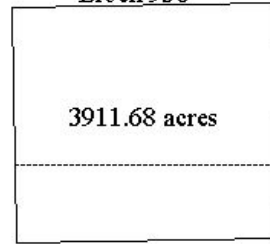
**ALAMINOS CANYON
Block 928**



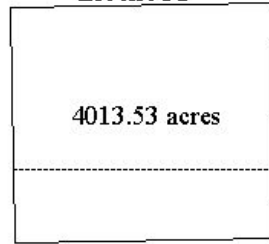
**ALAMINOS CANYON
Block 929**



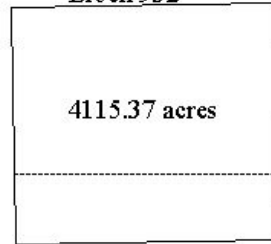
**ALAMINOS CANYON
Block 930**



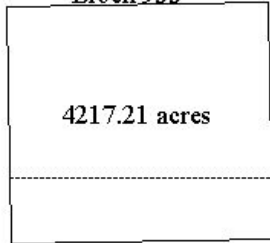
**ALAMINOS CANYON
Block 931**



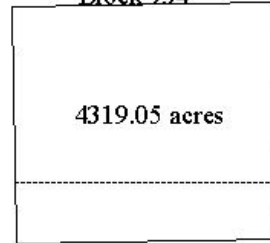
**ALAMINOS CANYON
Block 932**



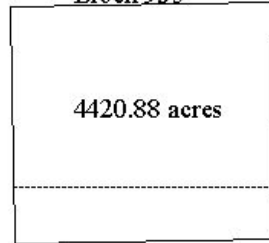
**ALAMINOS CANYON
Block 933**



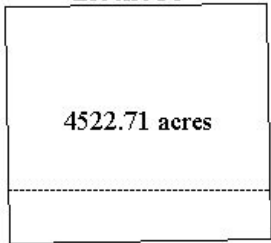
**ALAMINOS CANYON
Block 934**



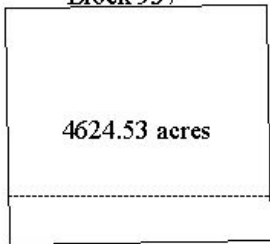
**ALAMINOS CANYON
Block 935**



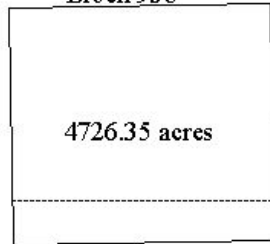
**ALAMINOS CANYON
Block 936**



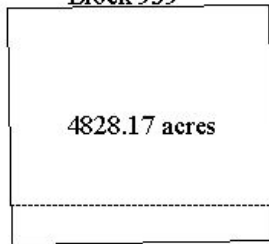
**ALAMINOS CANYON
Block 937**



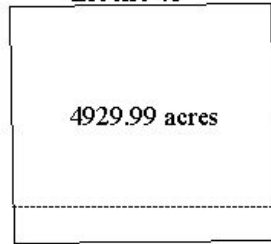
**ALAMINOS CANYON
Block 938**



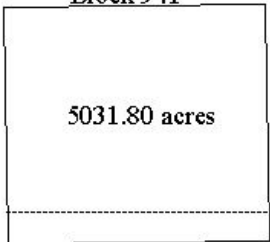
**ALAMINOS CANYON
Block 939**



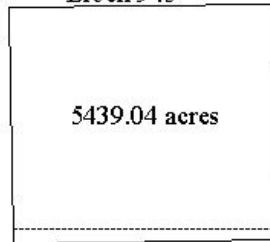
**ALAMINOS CANYON
Block 940**



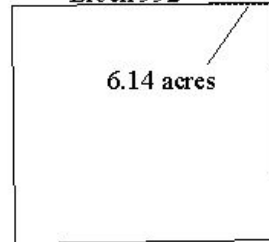
**ALAMINOS CANYON
Block 941**



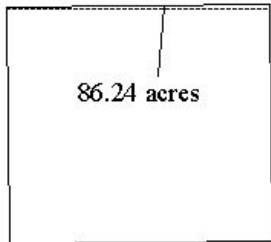
**ALAMINOS CANYON
Block 945**



**ALAMINOS CANYON
Block 992**



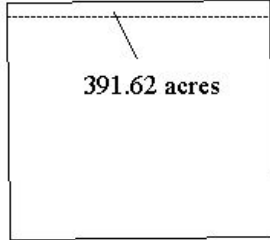
**ALAMINOS CANYON
Block 993**



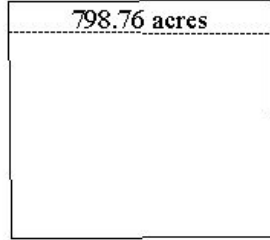
WESTERN GULF OF MEXICO LEASE SALE 184

Block Diagrams (continued)

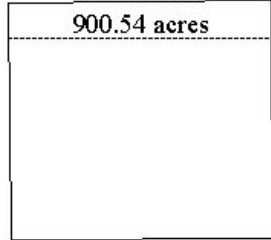
ALAMINOS CANYON
Block 996



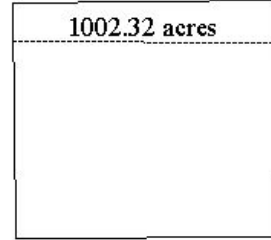
ALAMINOS CANYON
Block 1000



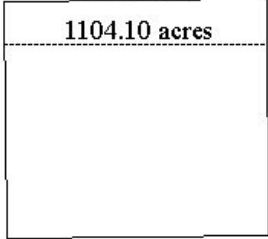
ALAMINOS CANYON
Block 1001



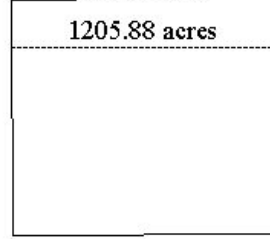
ALAMINOS CANYON
Block 1002



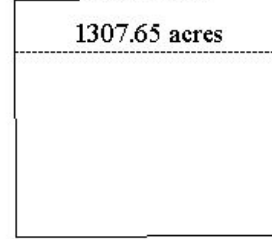
ALAMINOS CANYON
Block 1003



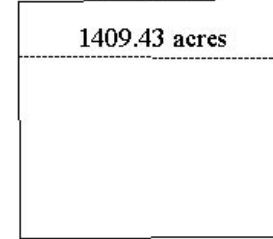
ALAMINOS CANYON
Block 1004



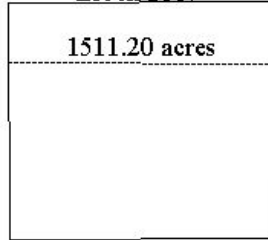
ALAMINOS CANYON
Block 1005



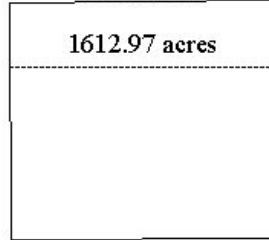
ALAMINOS CANYON
Block 1006



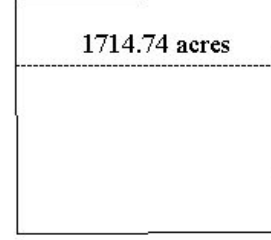
ALAMINOS CANYON
Block 1007



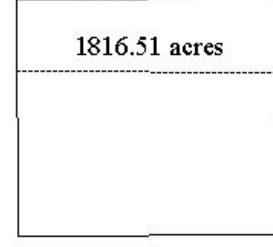
ALAMINOS CANYON
Block 1008



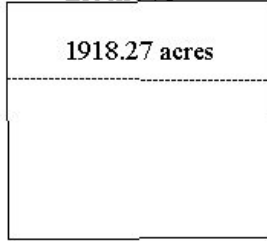
ALAMINOS CANYON
Block 1009



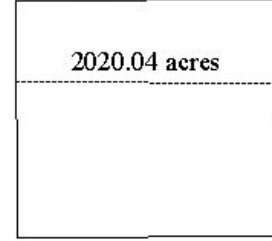
KEATHLEY CANYON
Block 969



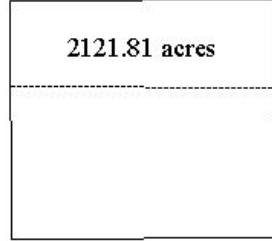
KEATHLEY CANYON
Block 970



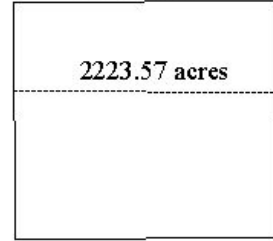
KEATHLEY CANYON
Block 971



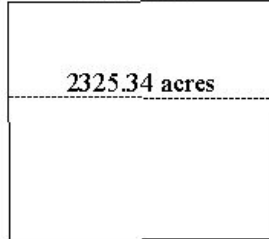
KEATHLEY CANYON
Block 972



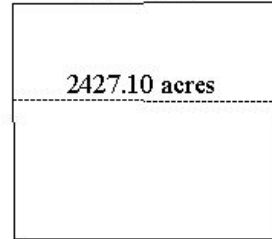
KEATHLEY CANYON
Block 973



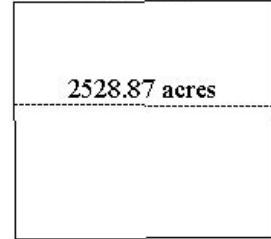
KEATHLEY CANYON
Block 974



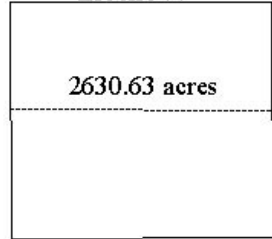
KEATHLEY CANYON
Block 975



KEATHLEY CANYON
Block 976



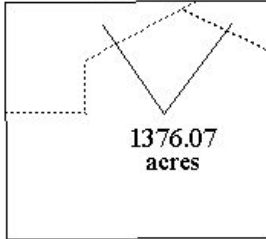
KEATHLEY CANYON
Block 977



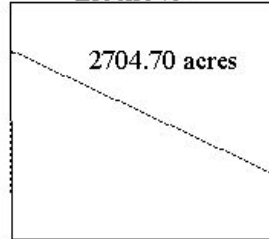
WESTERN GULF OF MEXICO LEASE SALE 184

Blocks Diagrams (continued)

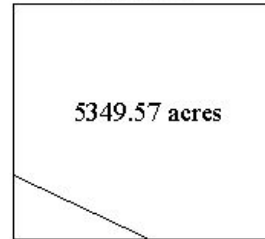
**KEATHLEY CANYON
Block 978**



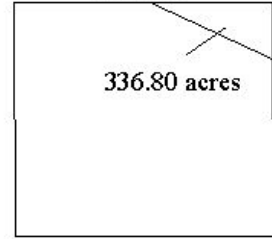
**KEATHLEY CANYON
Block 979**



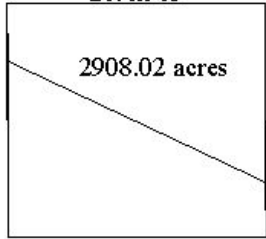
**KEATHLEY CANYON
Block 980**



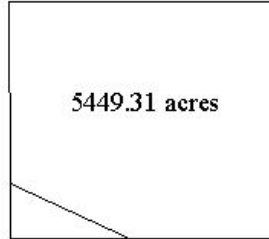
**SIGSBEE ESCARPMENT
Block 12**



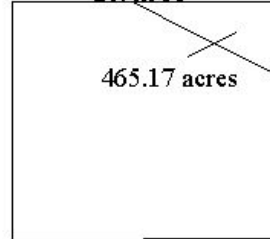
**SIGSBEE ESCARPMENT
Block 13**



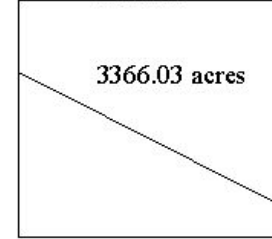
**SIGSBEE ESCARPMENT
Block 14**



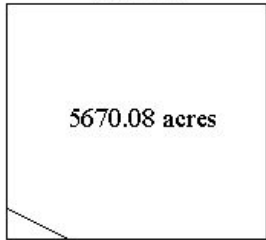
**SIGSBEE ESCARPMENT
Block 58**



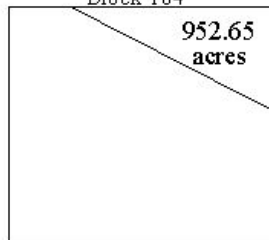
**SIGSBEE ESCARPMENT
Block 59**



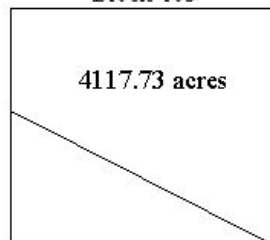
**SIGSBEE ESCARPMENT
Block 60**



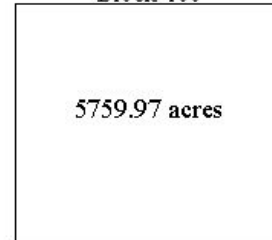
**SIGSBEE ESCARPMENT
Block 104**



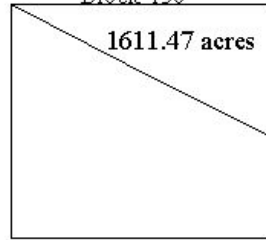
**SIGSBEE ESCARPMENT
Block 105**



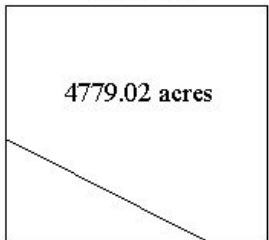
**SIGSBEE ESCARPMENT
Block 106**



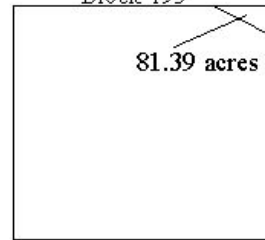
**SIGSBEE ESCARPMENT
Block 150**



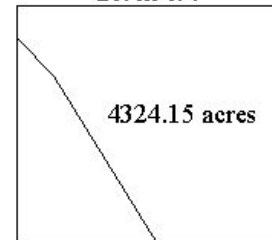
**SIGSBEE ESCARPMENT
Block 151**



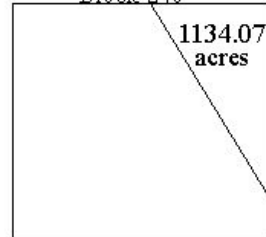
**SIGSBEE ESCARPMENT
Block 195**



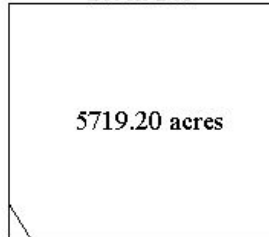
**SIGSBEE ESCARPMENT
Block 196**



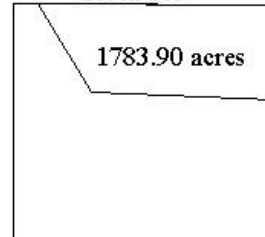
**SIGSBEE ESCARPMENT
Block 240**



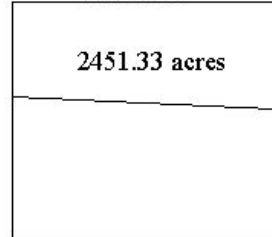
**SIGSBEE ESCARPMENT
Block 241**



**SIGSBEE ESCARPMENT
Block 285**



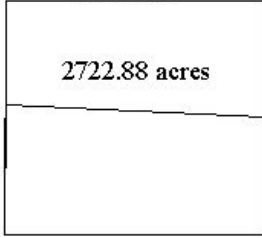
**SIGSBEE ESCARPMENT
Block 286**



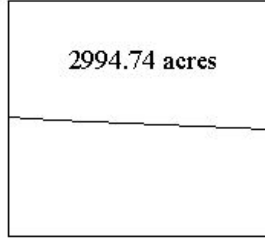
WESTERN GULF OF MEXICO LEASE SALE 184

Block Diagrams (continued)

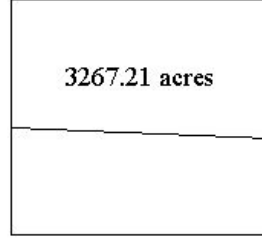
SIGSBEE ESCARPMENT
Block 287



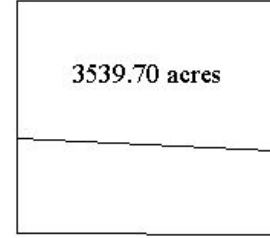
SIGSBEE ESCARPMENT
Block 288



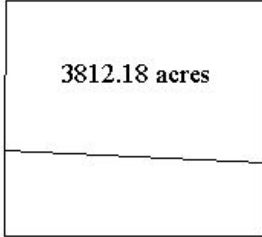
SIGSBEE ESCARPMENT
Block 289



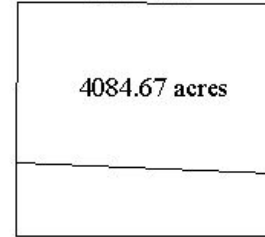
SIGSBEE ESCARPMENT
Block 290



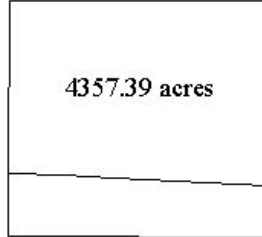
SIGSBEE ESCARPMENT
Block 291



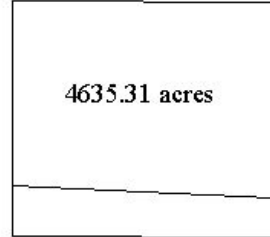
SIGSBEE ESCARPMENT
Block 292



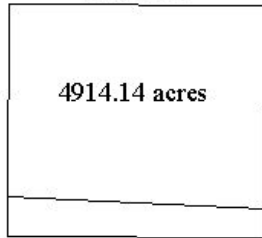
SIGSBEE ESCARPMENT
Block 293



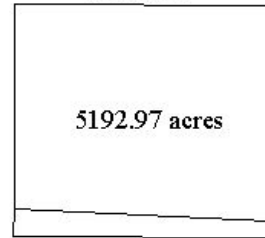
SIGSBEE ESCARPMENT
Block 294



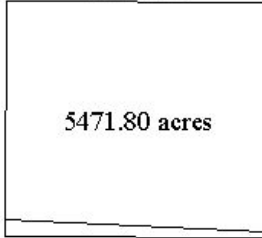
SIGSBEE ESCARPMENT
Block 295



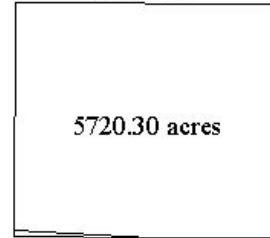
SIGSBEE ESCARPMENT
Block 296



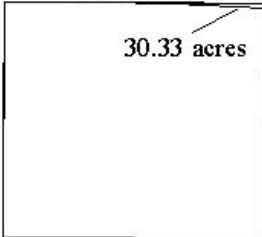
SIGSBEE ESCARPMENT
Block 297



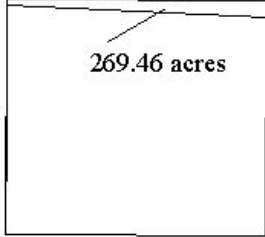
SIGSBEE ESCARPMENT
Block 298



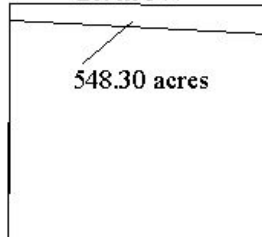
SIGSBEE ESCARPMENT
Block 342



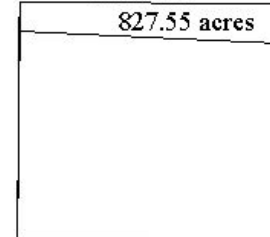
SIGSBEE ESCARPMENT
Block 343



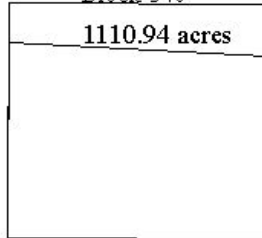
SIGSBEE ESCARPMENT
Block 344



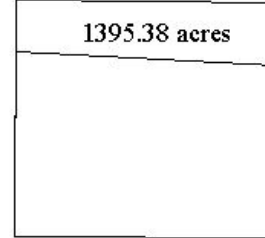
SIGSBEE ESCARPMENT
Block 345



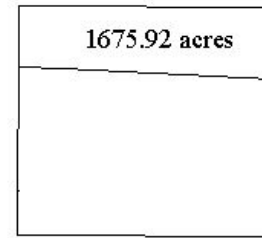
SIGSBEE ESCARPMENT
Block 346



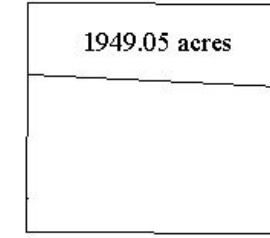
SIGSBEE ESCARPMENT
Block 347



SIGSBEE ESCARPMENT
Block 348

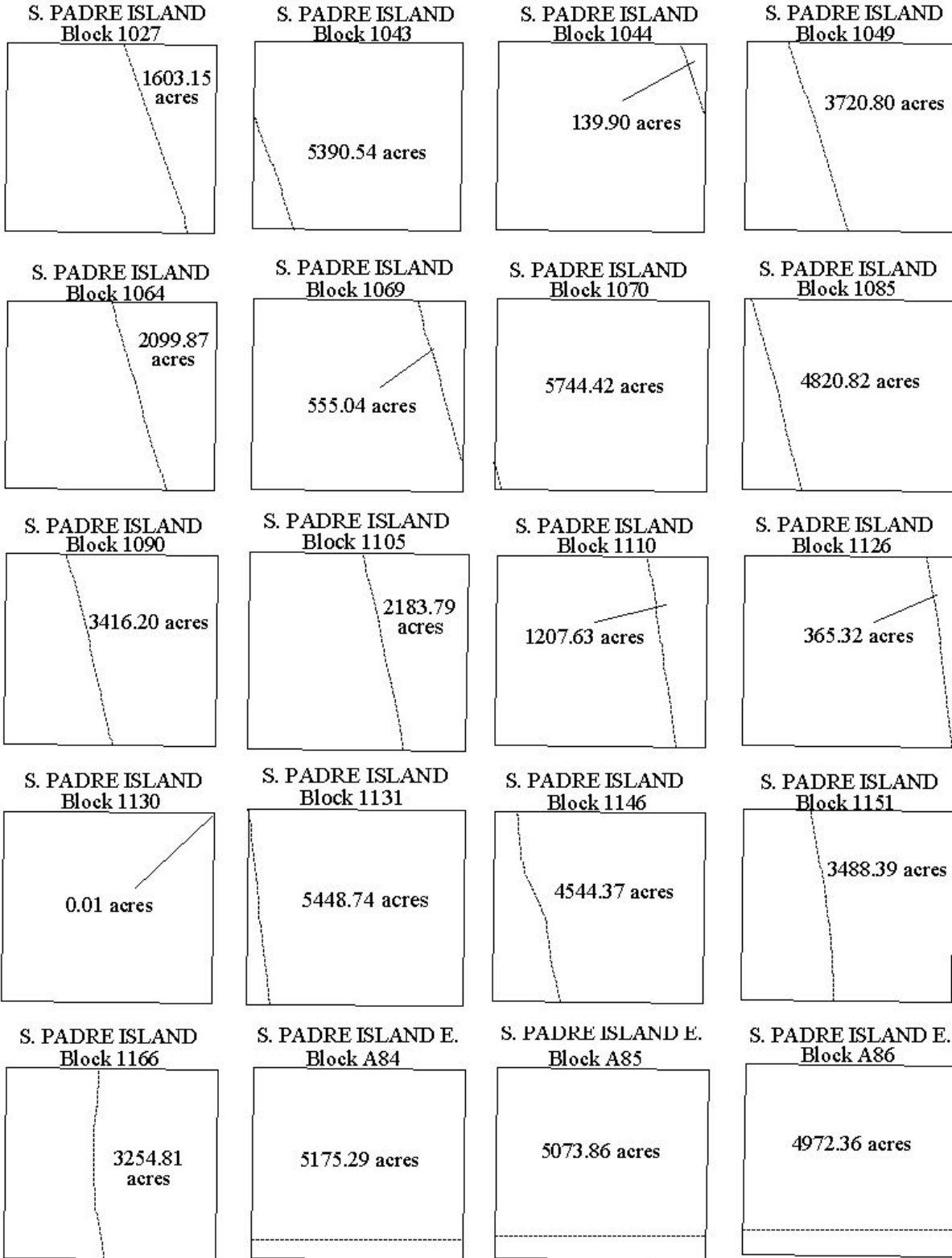


SIGSBEE ESCARPMENT
Block 349



WESTERN GULF OF MEXICO LEASE SALE 184

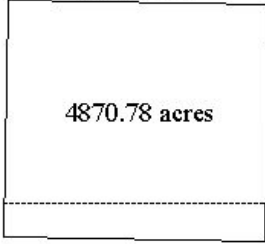
Block Diagrams (continued)



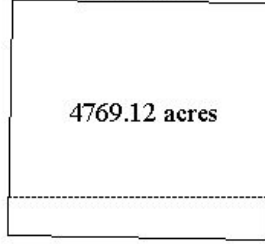
WESTERN GULF OF MEXICO LEASE SALE 184

Block Diagrams (continued)

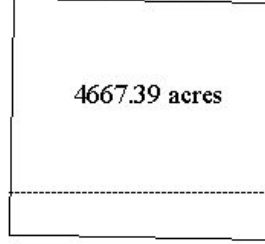
S. PADRE ISLAND E.
Block A87



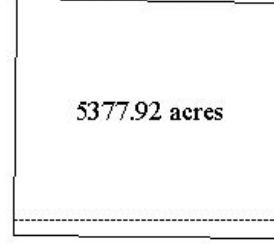
S. PADRE ISLAND E.
Block A89



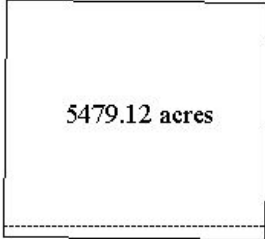
S. PADRE ISLAND E.
Block A90



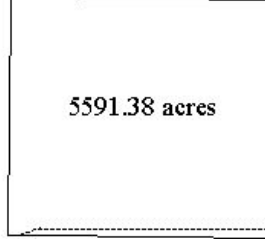
S. PADRE ISLAND E.
Block 1160



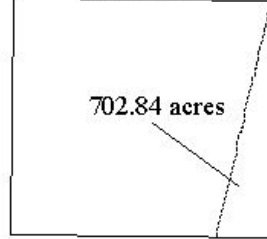
S. PADRE ISLAND E.
Block 1161



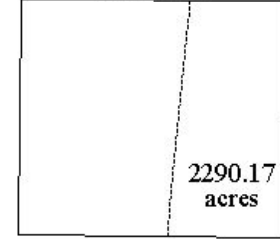
S. PADRE ISLAND E.
Block 1162



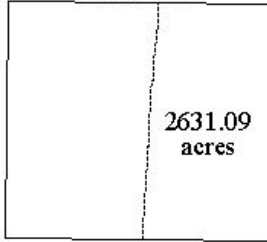
N. PADRE ISLAND
Block 883



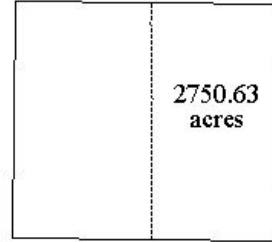
N. PADRE ISLAND
Block 904



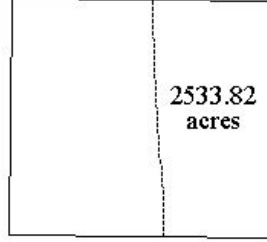
N. PADRE ISLAND
Block 919



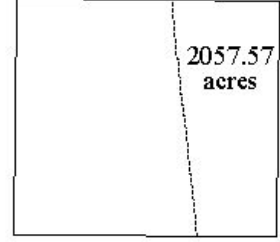
N. PADRE ISLAND
Block 924



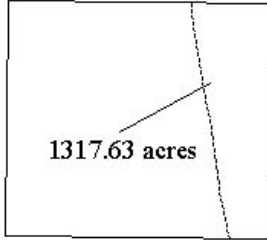
N. PADRE ISLAND
Block 939



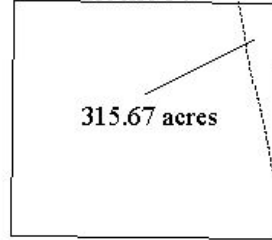
N. PADRE ISLAND
Block 944



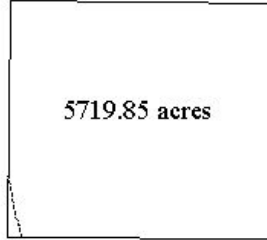
N. PADRE ISLAND
Block 959



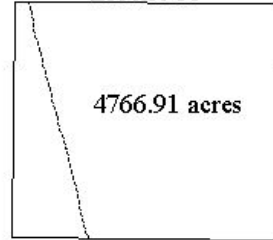
N. PADRE ISLAND
Block 964



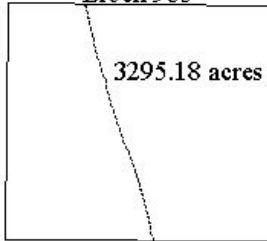
N. PADRE ISLAND
Block 965



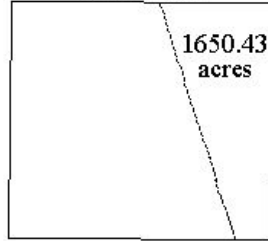
N. PADRE ISLAND
Block 980



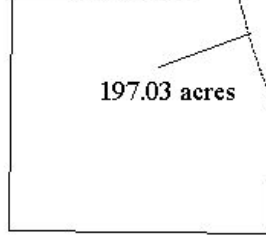
N. PADRE ISLAND
Block 985



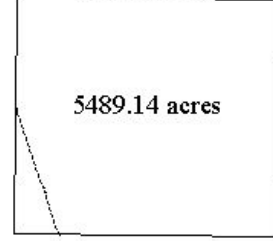
N. PADRE ISLAND
Block 1001



N. PADRE ISLAND
Block 1006

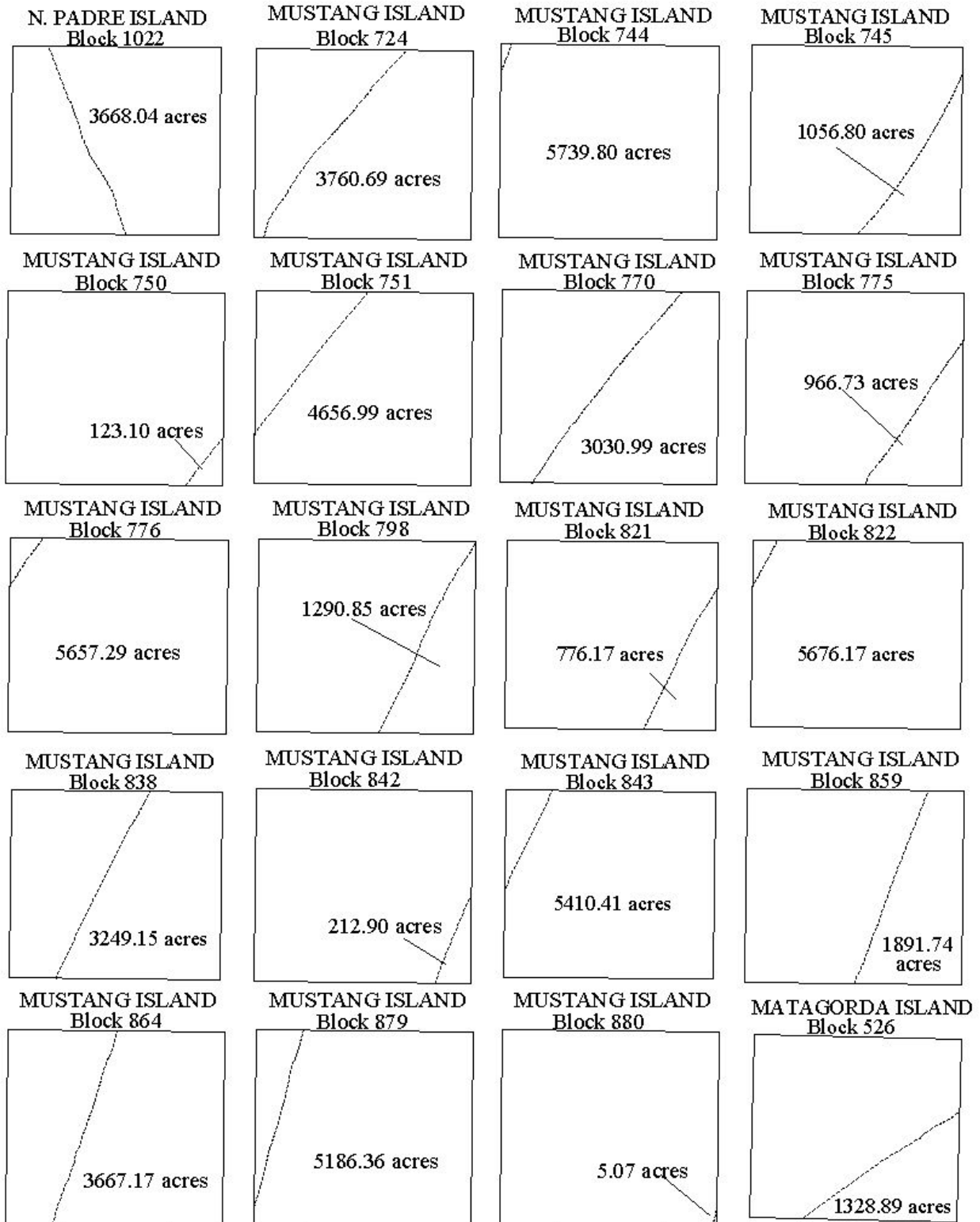


N. PADRE ISLAND
Block 1007



WESTERN GULF OF MEXICO LEASE SALE 184

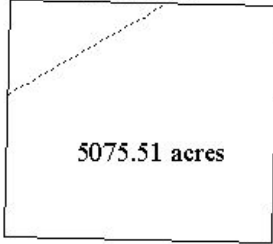
Block Diagrams (continued)



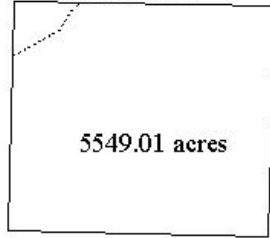
WESTERN GULF OF MEXICO LEASE SALE 184

Block Diagrams (continued)

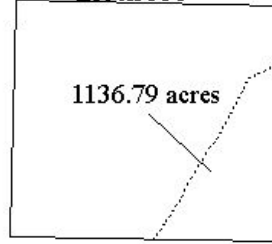
MATAGORDA ISLAND
Block 527



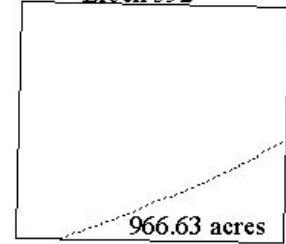
MATAGORDA ISLAND
Block 557



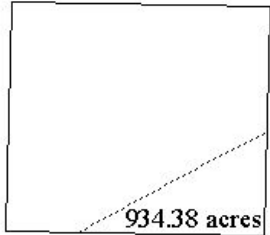
MATAGORDA ISLAND
Block 558



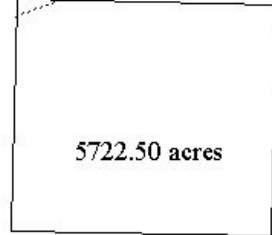
MATAGORDA ISLAND
Block 592



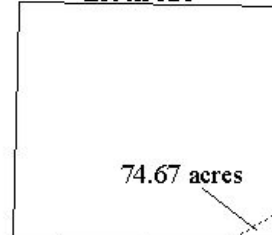
MATAGORDA ISLAND
Block 599



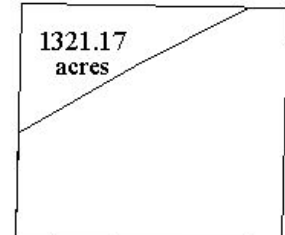
MATAGORDA ISLAND
Block 601



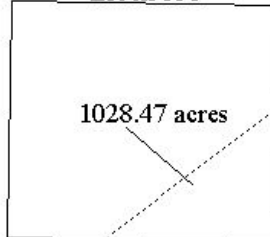
MATAGORDA ISLAND
Block 626



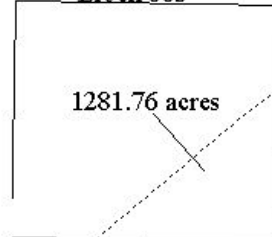
MATAGORDA ISLAND
Block 634



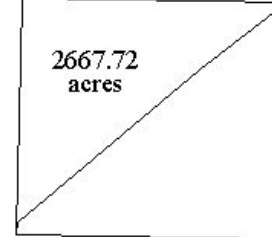
MATAGORDA ISLAND
Block 658



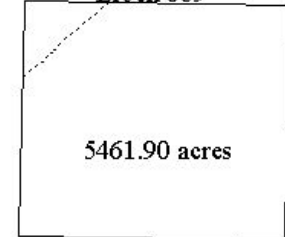
MATAGORDA ISLAND
Block 663



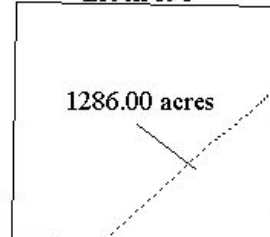
MATAGORDA ISLAND
Block 688



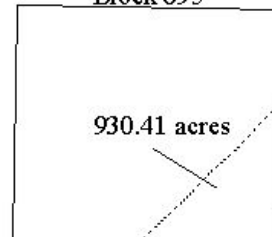
MATAGORDA ISLAND
Block 689



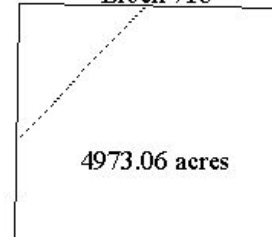
MATAGORDA ISLAND
Block 690



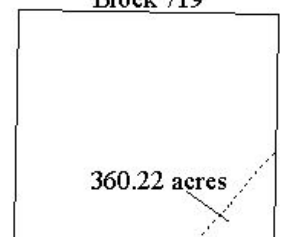
MATAGORDA ISLAND
Block 695



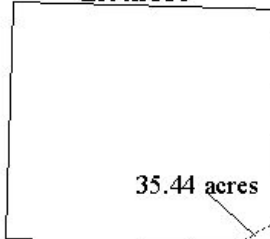
MATAGORDA ISLAND
Block 718



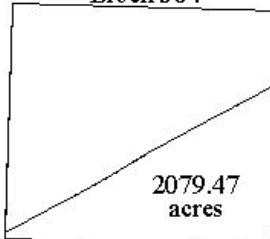
MATAGORDA ISLAND
Block 719



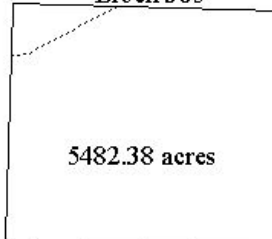
BRAZOS
Block 335



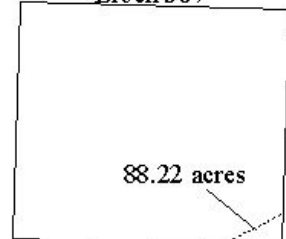
BRAZOS
Block 364



BRAZOS
Block 365

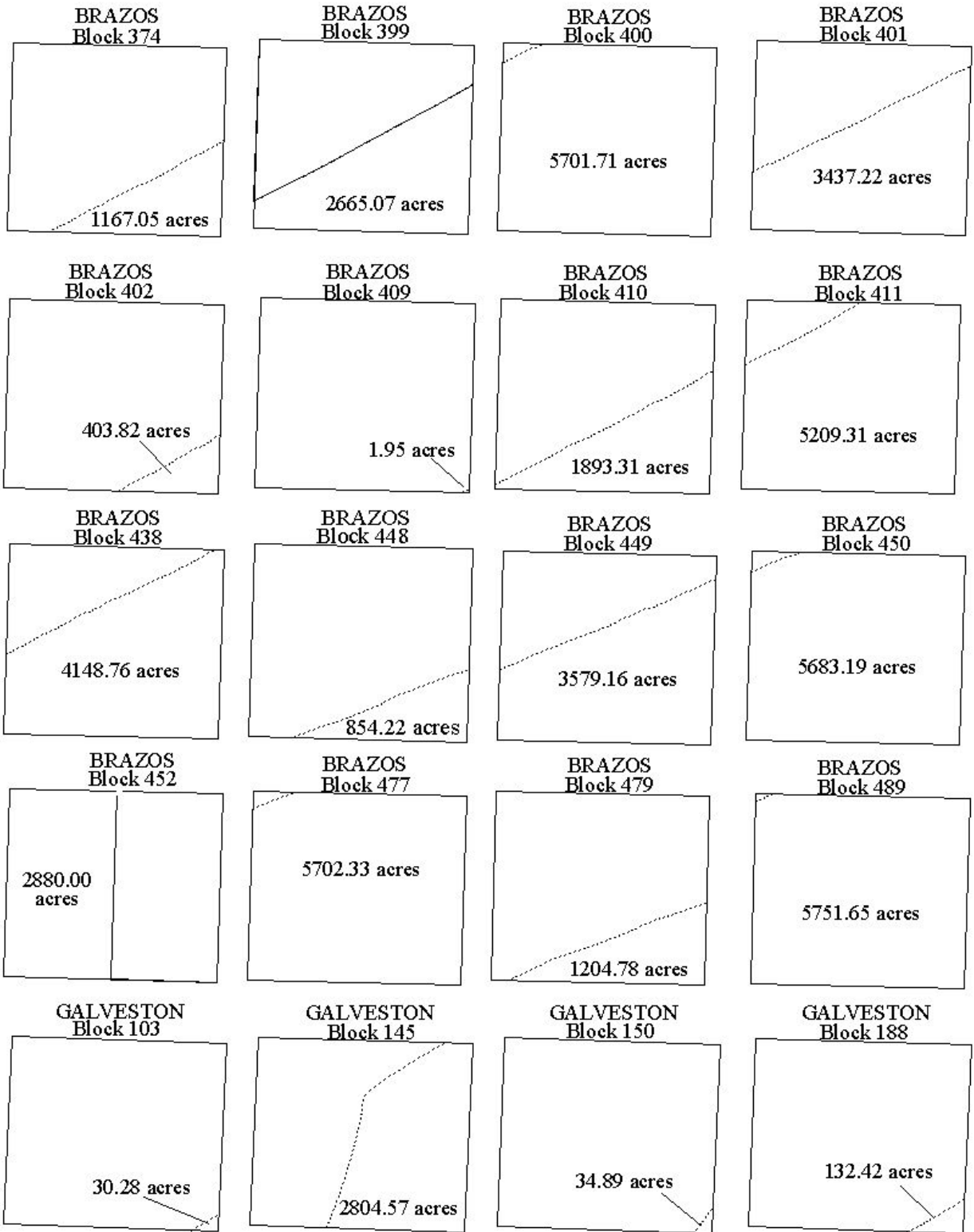


BRAZOS
Block 367



WESTERN GULF OF MEXICO LEASE SALE 184

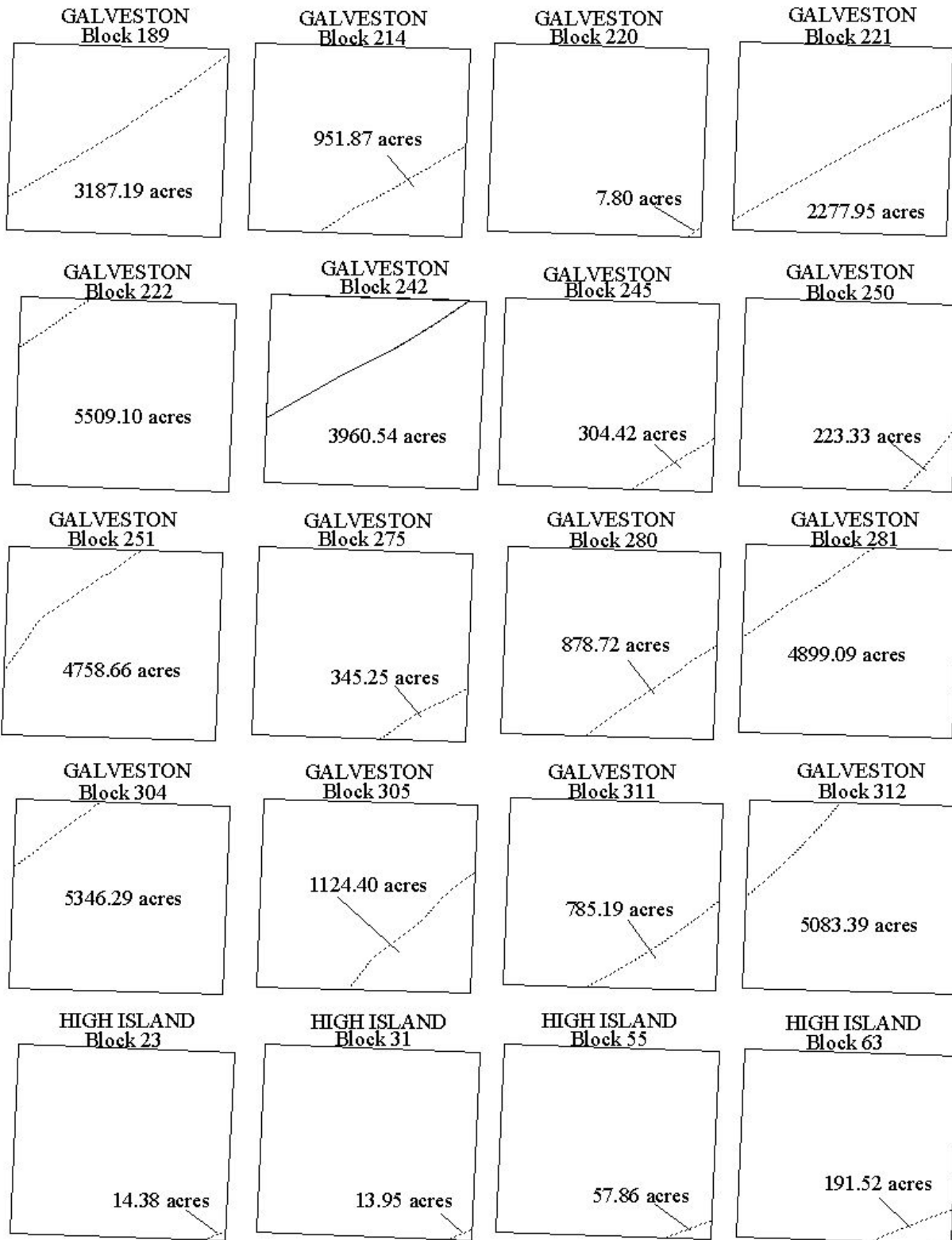
Block Diagrams (continued)



WESTERN GULF OF MEXICO LEASE SALE 184

Block Diagrams

(continued)



WESTERN GULF OF MEXICO LEASE SALE 184

Block Diagrams (continued)

