

**United States Department of the Interior  
Minerals Management Service  
Gulf of Mexico OCS Region**

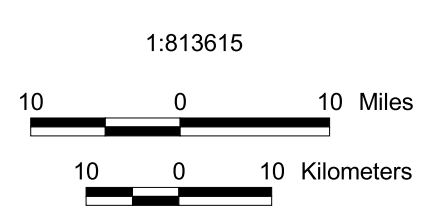
**CENTRAL GULF OF MEXICO PLANNING AREA**

**LEASE SALE 198**

**March 15, 2006**

**BIDS RECEIVED**

- 1 Bid
  - 2 Bids
  - 3 Bids
  - 4 Bids
  - 5 Bids
  - 6 Bid
  - 7 Bids
  - 8 Bids
  - 9 Bids
  - 10 Bids
- Lease Term, Bidding System and/or Royalty Suspension Boundary
- 200 meter
  - 400 meter
  - 800 meter
  - 1600 meter
  - 2000 meter
  - Unleased Blocks Currently Deferred/Unavailable



Projection: Albers  
1st Standard Parallel: 24 10 00  
2nd Standard Parallel: 30 10 00  
Central Meridian: -89 00 00

