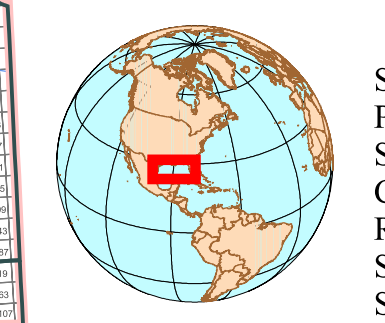
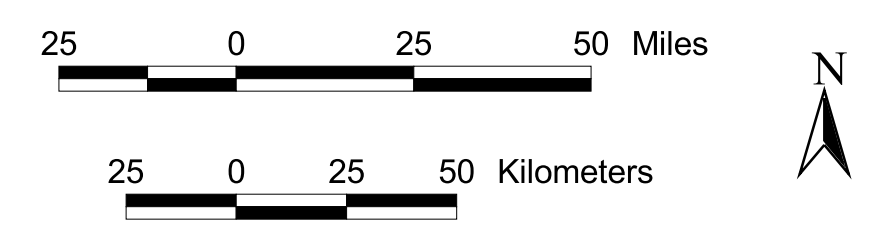


**MMS** United States Department of the Interior  
Minerals Management Service  
Gulf of Mexico OCS Region

# Active Leases and WGOM Sale 192 August 2004

- Bids received in WGOM Sale 192
- Active leases issued in 2003  
- CGOM Sale 185, WGOM Sale 187,  
and EGOM Sale 189
- Active leases issued prior to 2003
- Flower Garden Banks withdrawn from leasing
- Major Metropolitan areas
- Royalty Relief and Lease Term lines
- Planning Area boundary
- ⊙ Selected towns and cities



Scale: 1:1714000  
Projection: Albers Equal-Area Conic  
Spheroid: Clarke 1866  
Central Meridian: -89.17433  
Reference Latitude: 27.03441  
Standard Parallel 1: 24.89332  
Standard Parallel 2: 29.17550

— Water Depth (meters) —