

DECEMBER 8, 1997

WESTERN GULF OF MEXICO, LEASE SALE 168 (AUGUST 27, 1997)

PHASE 2 DECISION INFORMATION MATRIX

Attached is a tabulation of selected information from the Minerals Management Service's Phase 2 evaluation process for Sale 168. Abbreviations and codes are defined as follows:

Tract Type

- DD** - Drainage or Development Tract
- CW** - Confirmed or Wildcat Tract

ADJ Royalty Rate

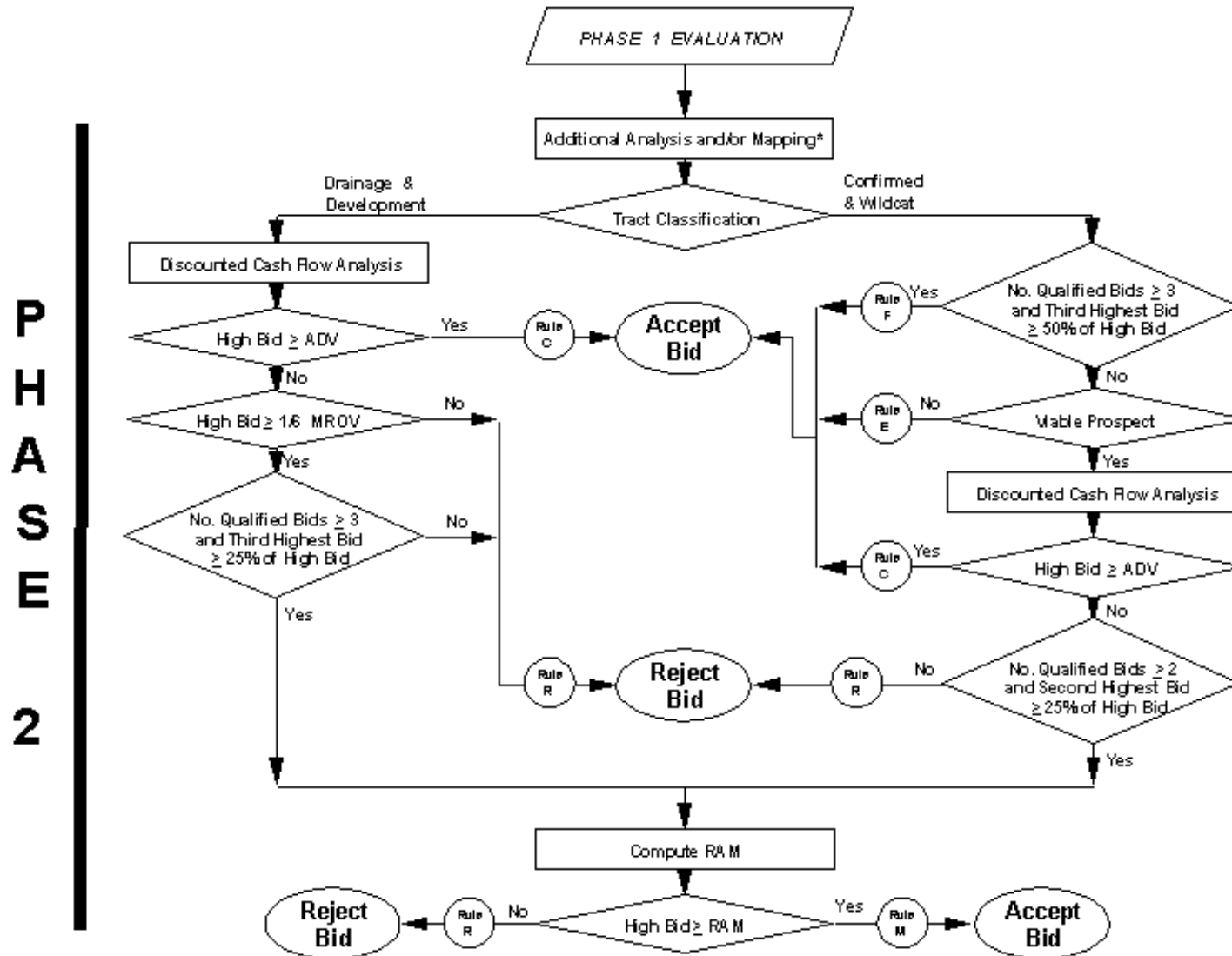
- 16 2/3% ROY** - 1/6 th royalty, 5 yr lease term, not eligible for royalty suspension (0 - 200 meters)
- 16 2/3% RS** - 1/6 th royalty, 5 yr lease term, eligible for royalty suspension (200 - 400 meters)
- 12 1/2% RS1** - 1/8 th royalty, 8 yr lease term, eligible for royalty suspension (400 - 800 meters)
- 12 1/2% RS2** - 1/8 th royalty, 10 yr lease term, eligible for royalty suspension (> 800 meters)

- MROV** - Mean of the Range-of-Value
- ADV** - Adjusted Delay Value
- RAM** - Revised Arithmetic - average Measure

Tract Decision Rule

- C** - Accept tract's High Bid in Phase 2: High Bid \geq ADV.
- E** - Accept tract's High Bid in Phase 2: tract is CW and is Non-Viable.
- F** - Accept tract's High Bid in Phase 2: tract is CW with \geq 3 bids where 3rd highest bid at least 50% of the highest qualified bid.
- V** - Accept tract's High Bid in Phase 2: tract is CW and passes a categorial fair market value (FMV) threshold measure test.
- M** - Accept tract's High Bid in Phase 2: ADV \geq High Bid \geq RAM
- R** - Reject tract's High Bid in Phase 2: High Bid is below tract's fair market value.

Postsale Evaluation Procedures



*In assuring the integrity of the bidding process, the Regional Director may identify an unusual bidding pattern at any time during the bid review process, but before a tract is accepted. The Regional Director may also expand the scope of tract evaluation procedures to include any categorical fair market evaluation technique(s) that evaluate, define and identify appropriate threshold measure(s) for acceptance (RULE V).

PHASE 2 DECISION INFORMATION MATRIX

Sale Number: 168

Page 1 of 29

Region Name: Gulf of Mexico OCS Region

Sale Identifier: WESTERN GULF OF MEXICO

Sale Date: AUGUST 27, 1997

OCS NUMBER	AREA CODE/ PROT NO	BLOCK NO.	ACRES/ HECTARES	TRACT TYPE	HIGH BID	MROV	ADV	RAM	ADJ #BIDS	ROYALTY RATE	TRACT DEC. RULE
G18851	PS	1111	5760.00	A CW	\$177,293	\$144,000	\$144,000	NA	1	16 2/3% ROY	E
G18852	PS	1112	5760.00	A CW	\$177,293	\$144,000	\$144,000	NA	1	16 2/3% ROY	E
G18853	PS	1151	3488.39	A CW	\$107,373	\$87,210	\$87,210	NA	1	16 2/3% ROY	E
G18854	PS	1152	5760.00	A CW	\$177,293	\$144,000	\$144,000	NA	1	16 2/3% ROY	E
R G18855	PS	1166	3254.81	A CW	\$166,874	\$620,000	\$620,000	NA	1	16 2/3% ROY	R
G18856	PN	949	5760.00	A CW	\$267,963	\$144,000	\$144,000	NA	1	16 2/3% ROY	E
G18857	PN	956	5760.00	A CW	\$193,291	\$144,000	\$144,000	NA	1	16 2/3% ROY	E
G18858	PN	967	5760.00	A CW	\$189,567	\$144,000	\$144,000	NA	1	16 2/3% ROY	E
G18859	PN	890	5760.00	A CW	\$267,566	\$144,000	\$144,000	NA	1	16 2/3% ROY	E
G18860	PN	932	5760.00	A CW	\$217,564	\$144,000	\$144,000	NA	1	16 2/3% ROY	E
G18861	PN	970	5760.00	A CW	\$658,264	\$144,000	\$144,000	NA	1	16 2/3% ROY	E
G18862	PN	973	5760.00	A CW	\$231,291	\$144,000	\$144,000	NA	1	16 2/3% ROY	E
G18863	PN A	9	5760.00	A CW	\$361,038	\$144,000	\$144,000	NA	1	16 2/3% ROY	E
G18864	PN A	27	5760.00	A CW	\$301,019	\$144,000	\$144,000	NA	1	16 2/3% ROY	E
G18865	PN A	30	5760.00	A CW	\$149,861	\$144,000	\$144,000	NA	1	16 2/3% ROY	E
G18866	PN A	41	5760.00	A CW	\$149,861	\$144,000	\$144,000	NA	1	16 2/3% ROY	E
G18867	PN A	70	5760.00	A CW	\$183,652	\$144,000	\$144,000	NA	1	16 2/3% ROY	E
G18868	PN A	75	5760.00	A CW	\$183,652	\$144,000	\$144,000	NA	1	16 2/3% ROY	E
R G18869	MU	726	5582.13	A CW	\$183,750	\$960,000	\$960,000	NA	1	16 2/3% ROY	R
G18870	MU	777	5760.00	A CW	\$212,187	\$144,000	\$144,000	NA	1	16 2/3% ROY	E
G18871	MU	778	5760.00	A CW	\$191,764	\$144,000	\$144,000	NA	1	16 2/3% ROY	E
G18872	MU	781	5760.00	A CW	\$497,487	\$144,000	\$144,000	NA	1	16 2/3% ROY	E
G18873	MU	804	5760.00	A CW	\$5,269,950	\$4,700,000	\$4,700,000	NA	1	16 2/3% ROY	C
G18874	MU	831	5760.00	A CW	\$702,000	\$144,000	\$144,000	NA	1	16 2/3% ROY	E
G18875	MU	836	5760.00	A CW	\$275,660	\$144,000	\$144,000	NA	1	16 2/3% ROY	E
G18876	MU	857	5760.00	A CW	\$348,190	\$144,000	\$144,000	NA	1	16 2/3% ROY	E

R DENOTES TRACT WITH REJECTED HIGH BID

PHASE 2 DECISION INFORMATION MATRIX

Sale Number: 168

Page 2 of 29

Region Name: Gulf of Mexico OCS Region

Sale Identifier: WESTERN GULF OF MEXICO

Sale Date: AUGUST 27, 1997

OCS NUMBER	AREA CODE/ PROT NO	BLOCK NO.	ACRES/ HECTARES	TRACT TYPE	HIGH BID	MROV	ADV	RAM	ADJ #BIDS	ROYALTY RATE	TRACT DEC. RULE
G18877	MU	866	5760.00	A CW	\$318,240	\$144,000	\$144,000	NA	1	16 2/3% ROY	C
G18878	MU A	33	5760.00	A CW	\$164,160	\$144,000	\$144,000	NA	1	16 2/3% ROY	E
G18880	MU A	51	5065.10	A CW	\$2,050,500	\$1,900,000	\$1,900,000	NA	1	16 2/3% ROY	C
G18883	MU A	117	5760.00	A CW	\$1,042,560	\$1,000,000	\$1,000,000	NA	1	16 2/3% ROY	C
R G18884	MU A	136	5760.00	A CW	\$408,960	\$1,400,000	\$1,400,000	NA	1	16 2/3% ROY	R
G18885	MI	565	4566.47	A CW	\$2,160,610	\$1,300,000	\$1,300,000	NA	2	16 2/3% ROY	C
G18887	MI	649	5760.00	A CW	\$579,697	\$280,000	\$280,000	NA	1	16 2/3% ROY	C
G18889	MI	701	5760.00	A CW	\$205,600	\$144,000	\$144,000	NA	1	16 2/3% ROY	C
G18890	MI	717	5760.00	A CW	\$183,750	\$144,000	\$144,000	NA	1	16 2/3% ROY	E
G18892	BA	366	2750.04	A CW	\$138,950	\$68,751	\$68,751	NA	2	16 2/3% ROY	E
G18893	BA	470	5760.00	A CW	\$163,775	\$144,000	\$144,000	NA	1	16 2/3% ROY	C
G18894	BA	472	5760.00	A CW	\$301,920	\$144,000	\$144,000	NA	1	16 2/3% ROY	C
G18895	BA	502	5760.00	A CW	\$328,502	\$144,000	\$144,000	NA	1	16 2/3% ROY	C
G18899	BA	583	5760.00	A CW	\$354,816	\$144,000	\$144,000	NA	1	16 2/3% ROY	E
R G18900	BA	584	5760.00	A CW	\$249,950	\$920,000	\$920,000	NA	1	16 2/3% ROY	R
G18901	BA	608	5760.00	A CW	\$511,200	\$144,000	\$144,000	NA	1	16 2/3% ROY	E
G18902	BA	610	5760.00	A CW	\$307,777	\$180,000	\$180,000	NA	1	16 2/3% ROY	C
G18903	BA A	2	5760.00	A CW	\$1,237,555	\$1,100,000	\$1,100,000	NA	2	16 2/3% ROY	C
G18905	BA A	26	5760.00	A CW	\$237,000	\$144,000	\$144,000	NA	1	16 2/3% ROY	E
G18906	BA A	78	5760.00	A CW	\$270,720	\$144,000	\$144,000	NA	1	16 2/3% ROY	E
G18907	BA A	79	5760.00	A CW	\$270,720	\$144,000	\$144,000	NA	1	16 2/3% ROY	E
G18908	BA A	98	5760.00	A CW	\$270,720	\$144,000	\$144,000	NA	1	16 2/3% ROY	E
G18909	BA A	99	5760.00	A CW	\$146,750	\$144,000	\$144,000	NA	1	16 2/3% ROY	E
G18910	BA A	100	5760.00	A CW	\$225,660	\$144,000	\$144,000	NA	1	16 2/3% ROY	E
G18912	BA A	128	5760.00	A CW	\$270,720	\$144,000	\$144,000	NA	1	16 2/3% ROY	E
G18913	BA A	129	5760.00	A CW	\$270,720	\$144,000	\$144,000	NA	1	16 2/3% ROY	E

R DENOTES TRACT WITH REJECTED HIGH BID

PHASE 2 DECISION INFORMATION MATRIX

Sale Number: 168

Page 3 of 29

Region Name: Gulf of Mexico OCS Region

Sale Identifier: WESTERN GULF OF MEXICO

Sale Date: AUGUST 27, 1997

OCS NUMBER	AREA CODE/ PROT NO	BLOCK NO.	ACRES/ HECTARES	TRACT TYPE	HIGH BID	MROV	ADV	RAM	ADJ #BIDS	ROYALTY RATE	TRACT DEC. RULE
G18914	GA	182	2777.17	A CW	\$717,128	\$710,000	\$710,000	NA	1	16 2/3% ROY	C
G18915	GA	242	1799.46	A CW	\$58,500	\$44,987	\$44,987	NA	1	16 2/3% ROY	E
G18916	GA	253	5760.00	A CW	\$700,770	\$730,000	\$730,000	\$685,423	2	16 2/3% ROY	M
G18917	GA	257	5760.00	A CW	\$252,200	\$144,000	\$144,000	NA	1	16 2/3% ROY	C
R G18918	GA	284	5760.00	A CW	\$572,440	\$1,600,000	\$1,600,000	\$882,797	2	16 2/3% ROY	R
G18919	GA	312	5083.39	A CW	\$2,677,700	\$2,700,000	\$2,700,000	\$1,973,435	4	16 2/3% ROY	M
G18920	GA	325	5760.00	A CW	\$247,500	\$144,000	\$144,000	NA	1	16 2/3% ROY	E
G18921	GA	418	5760.00	A CW	\$244,625	\$144,000	\$144,000	NA	1	16 2/3% ROY	E
G18922	GA	A 160	5760.00	A CW	\$1,217,712	\$400,000	\$400,000	NA	1	16 2/3% ROY	C
G18923	GA	A 189	5760.00	A CW	\$1,477,700	\$1,400,000	\$1,400,000	NA	1	16 2/3% ROY	C
G18925	HI	48	5760.00	A CW	\$150,505	\$144,000	\$144,000	NA	1	16 2/3% ROY	E
G18926	HI	49	5760.00	A CW	\$150,505	\$144,000	\$144,000	NA	1	16 2/3% ROY	C
G18929	HI	73	5760.00	A CW	\$2,287,700	\$144,000	\$144,000	NA	2	16 2/3% ROY	E
G18931	HI	93	5760.00	A CW	\$351,550	\$144,000	\$144,000	NA	1	16 2/3% ROY	E
G18932	HI	94	5760.00	A CW	\$301,550	\$144,000	\$144,000	NA	1	16 2/3% ROY	C
* G18936	HI	115	5760.00	A CW	\$1,756,800				7	16 2/3% ROY	F
G18937	HI	132	5760.00	A CW	\$617,000	\$144,000	\$144,000	NA	1	16 2/3% ROY	E
G18938	HI	133	5760.00	A CW	\$1,550,000	\$144,000	\$144,000	NA	3	16 2/3% ROY	E
G18939	HI	156	5760.00	A CW	\$774,400	\$144,000	\$144,000	NA	1	16 2/3% ROY	C
G18940	HI	232	5760.00	A CW	\$1,924,501	\$144,000	\$144,000	NA	5	16 2/3% ROY	C
G18941	HI	235	5760.00	A CW	\$757,700	\$144,000	\$144,000	NA	1	16 2/3% ROY	C
G18942	HI	A 16	5760.00	A CW	\$262,080	\$144,000	\$144,000	NA	1	16 2/3% ROY	C
G18943	HI	A 26	5760.00	A CW	\$181,800	\$144,000	\$144,000	NA	1	16 2/3% ROY	E
G18945	HI	A 152	5760.00	A CW	\$208,224	\$144,000	\$144,000	NA	1	16 2/3% ROY	E
G18946	HI	A 153	5760.00	A CW	\$218,304	\$144,000	\$144,000	NA	1	16 2/3% ROY	E
G18947	HI	A 155	5760.00	A CW	\$154,944	\$144,000	\$144,000	NA	1	16 2/3% ROY	E

R DENOTES TRACT WITH REJECTED HIGH BID

* THE TRACT TYPE WAS CHANGED DURING PHASE 2 EVALUATION AND THE HIGH BID WAS DEEMED ACCEPTABLE UNDER PHASE 1 3-BID RULE.

PHASE 2 DECISION INFORMATION MATRIX

Sale Number: 168

Page 4 of 29

Region Name: Gulf of Mexico OCS Region

Sale Identifier: WESTERN GULF OF MEXICO

Sale Date: AUGUST 27, 1997

OCS NUMBER	AREA CODE/ PROT NO	BLOCK NO.	ACRES/ HECTARES	TRACT TYPE	HIGH BID	MROV	ADV	RAM	ADJ #BIDS	ROYALTY RATE	TRACT DEC. RULE
G18948	HI	84	5760.00	A CW	\$150,505	\$144,000	\$144,000	NA	1	16 2/3% ROY	E
G18951	HI	A 458	5760.00	A CW	\$427,700	\$250,000	\$250,000	NA	1	16 2/3% ROY	C
G18952	HI	A 459	5760.00	A CW	\$388,700	\$270,000	\$270,000	NA	1	16 2/3% ROY	C
R G18953	HI	A 468	5760.00	A CW	\$151,086	\$680,000	\$680,000	NA	1	16 2/3% ROY	R
R G18954	HI	A 473	5760.00	A CW	\$171,050	\$590,000	\$590,000	NA	1	16 2/3% ROY	R
G18956	HI	A 530	5760.00	A CW	\$1,125,000	\$270,000	\$270,000	NA	2	16 2/3% ROY	C
G18957	HI	A 538	5760.00	A CW	\$1,150,000	\$900,000	\$900,000	NA	2	16 2/3% ROY	C
G18958	HI	A 562	1440.00	A CW	\$145,440	\$36,000	\$36,000	NA	1	16 2/3% ROY	E
G18959	HI	A 581	5760.00	A CW	\$308,100	\$144,000	\$144,000	NA	1	16 2/3% ROY	E
G18960	HI	A 588	5760.00	A CW	\$293,800	\$144,000	\$144,000	NA	1	16 2/3% ROY	E
G18965	HI	A 305	5760.00	A CW	\$350,000	\$144,000	\$144,000	NA	2	16 2/3% ROY	E
R G18966	HI	A 316	5760.00	A CW	\$412,012	\$900,000	\$900,000	NA	1	16 2/3% ROY	R
G18967	HI	A 322	5760.00	A CW	\$252,446	\$144,000	\$144,000	NA	1	16 2/3% ROY	C
G18968	HI	A 336	5760.00	A CW	\$466,560	\$144,000	\$144,000	NA	1	16 2/3% ROY	C
G18969	HI	A 337	5760.00	A CW	\$662,400	\$144,000	\$144,000	NA	1	16 2/3% ROY	E
G18970	HI	A 373	5760.00	A CW	\$1,081,012	\$144,000	\$144,000	NA	3	16 2/3% ROY	E
G18971	HI	A 374	5760.00	A CW	\$1,192,320	\$144,000	\$144,000	NA	3	16 2/3% ROY	E
G18972	HI	A 388	5760.00	A CW	\$928,700	\$830,000	\$830,000	NA	3	16 2/3% ROY	C
G18973	HI	A 390	5760.00	A CW	\$1,653,120	\$144,000	\$144,000	NA	1	16 2/3% ROY	C
G18974	HI	A 392	2893.39	A CW	\$101,260	\$72,335	\$72,335	NA	1	16 2/3% ROY	C
G18975	HI	A 395	5760.00	A CW	\$1,625,089	\$144,000	\$144,000	NA	3	16 2/3% ROY	C
G18980	EB	108	5760.00	A CW	\$217,000	\$144,000	\$144,000	NA	1	16 2/3% RS	C
G18981	EB	118	5760.00	A CW	\$723,840	\$144,000	\$144,000	NA	1	16 2/3% RS	C
R G18982	EB	152	5760.00	A CW	\$277,000	\$990,000	\$990,000	NA	1	16 2/3% RS	R
G18983	EB	153	5760.00	A CW	\$301,000	\$144,000	\$144,000	NA	1	16 2/3% RS	E
G18984	EB	162	5760.00	A CW	\$196,085	\$144,000	\$144,000	NA	1	16 2/3% RS	C

R DENOTES TRACT WITH REJECTED HIGH BID

PHASE 2 DECISION INFORMATION MATRIX

Sale Number: 168

Page 5 of 29

Region Name: Gulf of Mexico OCS Region

Sale Identifier: WESTERN GULF OF MEXICO

Sale Date: AUGUST 27, 1997

OCS NUMBER	AREA CODE/ PROT NO	BLOCK NO.	ACRES/ HECTARES	TRACT TYPE	HIGH BID	MROV	ADV	RAM	ADJ #BIDS	ROYALTY RATE	TRACT DEC. RULE
G18985	EB	206	5760.00	A CW	\$3,825,852	\$144,000	\$144,000	NA	4	16 2/3% RS	C
G18986	EB	207	5760.00	A CW	\$404,089	\$144,000	\$144,000	NA	1	16 2/3% RS	E
G18988	EB	249	5760.00	A CW	\$511,500	\$144,000	\$144,000	NA	2	12 1/2% RS1	C
G18993	EB	376	5760.00	A CW	\$531,654	\$144,000	\$144,000	NA	2	12 1/2% RS1	E
G18994	EB	377	5760.00	A CW	\$576,776	\$144,000	\$144,000	NA	2	12 1/2% RS1	E
R G18995	EB	384	5760.00	A CW	\$777,777	\$2,900,000	\$2,900,000	NA	1	12 1/2% RS1	R
G18996	EB	385	5760.00	A CW	\$749,995	\$144,000	\$144,000	NA	2	12 1/2% RS1	E
G18997	EB	386	5760.00	A CW	\$1,048,320	\$1,700,000	\$1,700,000	\$1,020,878	2	12 1/2% RS1	M
G18998	EB	392	5760.00	A CW	\$245,668	\$144,000	\$144,000	NA	1	12 1/2% RS2	E
G18999	EB	393	5760.00	A CW	\$694,226	\$144,000	\$144,000	NA	2	12 1/2% RS1	E
G19000	EB	429	5760.00	A CW	\$1,515,151	\$850,000	\$850,000	NA	3	12 1/2% RS2	C
G19001	EB	430	5760.00	A CW	\$4,106,880	\$3,600,000	\$3,600,000	NA	3	12 1/2% RS2	C
G19002	EB	431	5760.00	A CW	\$3,133,440	\$2,900,000	\$2,900,000	NA	2	12 1/2% RS1	C
G19003	EB	447	5760.00	A CW	\$177,120	\$144,000	\$144,000	NA	1	12 1/2% RS1	C
G19004	EB	462	5760.00	A CW	\$221,520	\$144,000	\$144,000	NA	1	12 1/2% RS2	E
G19005	EB	463	5760.00	A CW	\$221,520	\$144,000	\$144,000	NA	1	12 1/2% RS2	E
G19006	EB	465	5760.00	A CW	\$153,225	\$144,000	\$144,000	NA	1	12 1/2% RS2	C
G19007	EB	468	5760.00	A CW	\$154,089	\$144,000	\$144,000	NA	1	12 1/2% RS2	E
G19008	EB	476	5760.00	A CW	\$1,123,000	\$144,000	\$144,000	NA	2	12 1/2% RS2	E
G19009	EB	477	5760.00	A CW	\$423,000	\$144,000	\$144,000	NA	1	12 1/2% RS2	E
G19010	EB	479	5760.00	A CW	\$413,880	\$144,000	\$144,000	NA	1	12 1/2% RS2	E
G19011	EB	480	5760.00	A CW	\$157,880	\$144,000	\$144,000	NA	1	12 1/2% RS2	E
G19012	EB	491	5760.00	A CW	\$177,120	\$144,000	\$144,000	NA	1	12 1/2% RS2	C
G19013	EB	492	5760.00	A CW	\$253,728	\$144,000	\$144,000	NA	1	12 1/2% RS2	C
G19014	EB	511	5760.00	A CW	\$221,520	\$144,000	\$144,000	NA	1	12 1/2% RS2	E
G19015	EB	512	5760.00	A CW	\$612,089	\$144,000	\$144,000	NA	1	12 1/2% RS2	E

R DENOTES TRACT WITH REJECTED HIGH BID

PHASE 2 DECISION INFORMATION MATRIX

Sale Number: 168

Page 6 of 29

Region Name: Gulf of Mexico OCS Region

Sale Identifier: WESTERN GULF OF MEXICO

Sale Date: AUGUST 27, 1997

OCS NUMBER	AREA CODE/ PROT NO	BLOCK NO.	ACRES/ HECTARES	TRACT TYPE	HIGH BID	MROV	ADV	RAM	ADJ #BIDS	ROYALTY RATE	TRACT DEC. RULE
G19016	EB	519	5760.00	A CW	\$811,150	\$144,000	\$144,000	NA	1	12 1/2% RS2	E
G19017	EB	522	5760.00	A CW	\$371,810	\$144,000	\$144,000	NA	1	12 1/2% RS2	E
G19018	EB	523	5760.00	A CW	\$2,527,710	\$144,000	\$144,000	NA	1	12 1/2% RS2	C
G19019	EB	524	5760.00	A CW	\$1,142,910	\$144,000	\$144,000	NA	1	12 1/2% RS2	E
G19020	EB	536	5760.00	A CW	\$433,440	\$144,000	\$144,000	NA	1	12 1/2% RS2	E
G19021	EB	555	5760.00	A CW	\$165,250	\$144,000	\$144,000	NA	2	12 1/2% RS2	C
G19022	EB	567	5760.00	A CW	\$267,610	\$144,000	\$144,000	NA	1	12 1/2% RS2	E
G19023	EB	568	5760.00	A CW	\$638,710	\$144,000	\$144,000	NA	1	12 1/2% RS2	E
G19024	EB	578	5760.00	A CW	\$2,212,416	\$144,000	\$144,000	NA	1	12 1/2% RS2	C
G19025	EB	579	5760.00	A CW	\$4,762,080	\$144,000	\$144,000	NA	4	12 1/2% RS2	C
G19026	EB	580	5760.00	A CW	\$800,089	\$144,000	\$144,000	NA	2	12 1/2% RS2	C
* G19027	EB	598	5760.00	A CW	\$599,000				4	12 1/2% RS2	F
* G19028	EB	599	5760.00	A CW	\$2,521,152				4	12 1/2% RS2	F
G19029	EB	600	5760.00	A CW	\$443,000	\$144,000	\$144,000	NA	3	12 1/2% RS2	C
G19030	EB	623	5760.00	A CW	\$3,623,089	\$144,000	\$144,000	NA	4	12 1/2% RS2	C
G19032	EB	638	5760.00	A CW	\$226,776	\$144,000	\$144,000	NA	1	12 1/2% RS2	C
G19033	EB	639	5760.00	A CW	\$226,776	\$144,000	\$144,000	NA	1	12 1/2% RS2	C
G19034	EB	722	5760.00	A CW	\$147,600	\$144,000	\$144,000	NA	1	12 1/2% RS2	E
G19035	EB	727	5760.00	A CW	\$616,320	\$144,000	\$144,000	NA	1	12 1/2% RS2	E
G19036	EB	730	5760.00	A CW	\$2,006,000	\$600,000	\$600,000	NA	1	12 1/2% RS2	C
G19037	EB	771	5760.00	A CW	\$313,344	\$144,000	\$144,000	NA	1	12 1/2% RS2	E
G19038	EB	773	5760.00	A CW	\$813,000	\$460,000	\$460,000	NA	1	12 1/2% RS2	C
G19039	EB	774	5760.00	A CW	\$2,823,000	\$860,000	\$860,000	NA	1	12 1/2% RS2	C
G19040	EB	817	5760.00	A CW	\$226,776	\$144,000	\$144,000	NA	1	12 1/2% RS2	E
G19041	EB	822	5760.00	A CW	\$433,000	\$144,000	\$144,000	NA	2	12 1/2% RS2	E
G19042	EB	824	5760.00	A CW	\$178,300	\$144,000	\$144,000	NA	1	12 1/2% RS2	E

* THE TRACT TYPE WAS CHANGED DURING PHASE 2 EVALUATION AND THE HIGH BID WAS DEEMED ACCEPTABLE UNDER PHASE 1 3-BID RULE.

PHASE 2 DECISION INFORMATION MATRIX

Sale Number: 168

Page 7 of 29

Region Name: Gulf of Mexico OCS Region

Sale Identifier: WESTERN GULF OF MEXICO

Sale Date: AUGUST 27, 1997

OCS NUMBER	AREA CODE/ PROT NO	BLOCK NO.	ACRES/ HECTARES	TRACT TYPE	HIGH BID	MROV	ADV	RAM	ADJ #BIDS	ROYALTY RATE	TRACT DEC. RULE
G19043	EB	825	5760.00	A CW	\$526,000	\$144,000	\$144,000	NA	1	12 1/2% RS2	E
G19044	EB	826	5760.00	A CW	\$1,055,000	\$144,000	\$144,000	NA	2	12 1/2% RS2	E
G19045	EB	828	5760.00	A CW	\$1,165,060	\$144,000	\$144,000	NA	1	12 1/2% RS2	E
G19046	EB	829	5760.00	A CW	\$1,899,050	\$144,000	\$144,000	NA	1	12 1/2% RS2	E
G19047	EB	862	5760.00	A CW	\$607,776	\$144,000	\$144,000	NA	1	12 1/2% RS2	E
G19048	EB	866	5760.00	A CW	\$633,000	\$144,000	\$144,000	NA	2	12 1/2% RS2	E
G19049	EB	867	5760.00	A CW	\$433,000	\$144,000	\$144,000	NA	1	12 1/2% RS2	E
G19050	EB	868	5760.00	A CW	\$232,200	\$144,000	\$144,000	NA	1	12 1/2% RS2	E
G19051	EB	882	5760.00	A CW	\$214,272	\$144,000	\$144,000	NA	1	12 1/2% RS2	E
G19052	EB	906	5760.00	A CW	\$406,776	\$144,000	\$144,000	NA	1	12 1/2% RS2	E
G19053	EB	910	5760.00	A CW	\$433,000	\$144,000	\$144,000	NA	2	12 1/2% RS2	E
G19054	EB	911	5760.00	A CW	\$216,000	\$144,000	\$144,000	NA	1	12 1/2% RS2	E
G19055	EB	926	5760.00	A CW	\$214,272	\$144,000	\$144,000	NA	1	12 1/2% RS2	E
G19056	EB	931	5760.00	A CW	\$147,600	\$144,000	\$144,000	NA	1	12 1/2% RS2	E
G19057	EB	941	5760.00	A CW	\$511,000	\$144,000	\$144,000	NA	1	12 1/2% RS2	E
G19058	EB	942	5760.00	A CW	\$578,000	\$144,000	\$144,000	NA	1	12 1/2% RS2	E
G19059	EB	951	5760.00	A CW	\$211,000	\$144,000	\$144,000	NA	1	12 1/2% RS2	E
G19060	EB	955	5760.00	A CW	\$211,000	\$144,000	\$144,000	NA	1	12 1/2% RS2	E
G19061	EB	956	5760.00	A CW	\$206,000	\$144,000	\$144,000	NA	1	12 1/2% RS2	E
G19062	EB	958	5760.00	A CW	\$207,180	\$144,000	\$144,000	NA	1	12 1/2% RS2	E
G19063	EB	959	5760.00	A CW	\$330,380	\$144,000	\$144,000	NA	1	12 1/2% RS2	E
G19064	EB	960	5760.00	A CW	\$439,410	\$144,000	\$144,000	NA	1	12 1/2% RS2	E
G19065	EB	961	5760.00	A CW	\$194,650	\$144,000	\$144,000	NA	1	12 1/2% RS2	E
G19066	EB	980	5760.00	A CW	\$413,000	\$144,000	\$144,000	NA	2	12 1/2% RS2	E
R G19067	EB	981	5760.00	A CW	\$1,517,000	\$4,400,000	\$4,400,000	\$2,377,363	2	12 1/2% RS2	R
G19068	EB	982	5760.00	A CW	\$413,000	\$144,000	\$144,000	NA	1	12 1/2% RS2	E

R DENOTES TRACT WITH REJECTED HIGH BID

PHASE 2 DECISION INFORMATION MATRIX

Sale Number: 168

Page 8 of 29

Region Name: Gulf of Mexico OCS Region

Sale Identifier: WESTERN GULF OF MEXICO

Sale Date: AUGUST 27, 1997

OCS NUMBER	AREA CODE/ PROT NO	BLOCK NO.	ACRES/ HECTARES	TRACT TYPE	HIGH BID	MROV	ADV	RAM	ADJ #BIDS	ROYALTY RATE	TRACT DEC. RULE
G19069	EB	985	5760.00	A CW	\$2,712,000	\$144,000	\$144,000	NA	1	12 1/2% RS2	E
G19070	EB	986	5760.00	A CW	\$5,113,000	\$3,400,000	\$3,400,000	NA	1	12 1/2% RS2	C
G19071	EB	993	5760.00	A CW	\$5,176,776	\$144,000	\$144,000	NA	1	12 1/2% RS2	E
G19072	EB	996	5760.00	A CW	\$211,000	\$144,000	\$144,000	NA	1	12 1/2% RS2	E
G19073	EB	997	5760.00	A CW	\$333,000	\$144,000	\$144,000	NA	1	12 1/2% RS2	E
G19074	EB	998	5760.00	A CW	\$211,000	\$144,000	\$144,000	NA	1	12 1/2% RS2	E
G19075	GB	35	2534.10	A CW	\$215,800	\$210,000	\$210,000	NA	1	16 2/3% ROY	C
G19076	GB	95	2267.78	A CW	\$107,000	\$56,695	\$56,695	NA	1	16 2/3% ROY	E
G19077	GB	103	2728.22	A CW	\$150,230	\$68,206	\$68,206	NA	1	16 2/3% ROY	E
G19078	GB	106	5760.00	A CW	\$159,870	\$144,000	\$144,000	NA	1	16 2/3% RS	E
G19079	GB	116	5760.00	A CW	\$1,362,800	\$144,000	\$144,000	NA	1	16 2/3% RS	E
G19080	GB	148	5760.00	A CW	\$862,500	\$144,000	\$144,000	NA	1	16 2/3% RS	E
G19081	GB	149	5760.00	A CW	\$200,400	\$144,000	\$144,000	NA	1	16 2/3% RS	E
G19082	GB	166	5760.00	A CW	\$494,400	\$144,000	\$144,000	NA	1	12 1/2% RS1	E
G19083	GB	185	5760.00	A CW	\$204,480	\$144,000	\$144,000	NA	1	16 2/3% RS	E
G19084	GB	197	5760.00	A CW	\$2,540,160	\$144,000	\$144,000	NA	2	16 2/3% RS	E
G19085	GB	210	5760.00	A CW	\$908,100	\$144,000	\$144,000	NA	1	12 1/2% RS1	E
G19086	GB	228	5760.00	A CW	\$189,179	\$144,000	\$144,000	NA	1	16 2/3% RS	E
G19087	GB	232	5760.00	A CW	\$152,064	\$144,000	\$144,000	NA	1	16 2/3% RS	E
G19088	GB	241	5760.00	A CW	\$427,610	\$144,000	\$144,000	NA	1	16 2/3% RS	E
G19089	GB	243	5760.00	A CW	\$427,210	\$144,000	\$144,000	NA	1	12 1/2% RS1	E
G19090	GB	252	5760.00	A CW	\$328,320	\$144,000	\$144,000	NA	1	12 1/2% RS1	E
G19091	GB	261	5760.00	A CW	\$538,560	\$144,000	\$144,000	NA	1	12 1/2% RS1	E
R G19092	GB	279	5760.00	A CW	\$161,190	\$640,000	\$640,000	NA	1	16 2/3% RS	R
G19093	GB	285	5760.00	A CW	\$438,000	\$144,000	\$144,000	NA	2	12 1/2% RS1	E
G19094	GB	286	5760.00	A CW	\$486,000	\$144,000	\$144,000	NA	2	12 1/2% RS1	E

R DENOTES TRACT WITH REJECTED HIGH BID

PHASE 2 DECISION INFORMATION MATRIX

Sale Number: 168

Page 9 of 29

Region Name: Gulf of Mexico OCS Region

Sale Identifier: WESTERN GULF OF MEXICO

Sale Date: AUGUST 27, 1997

OCS NUMBER	AREA CODE/ PROT NO	BLOCK NO.	ACRES/ HECTARES	TRACT TYPE	HIGH BID	MROV	ADV	RAM	ADJ #BIDS	ROYALTY RATE	TRACT DEC. RULE
G19095	GB	287	5760.00	A CW	\$1,431,110	\$144,000	\$144,000	NA	3	12 1/2% RS1	E
G19096	GB	288	5760.00	A CW	\$342,800	\$144,000	\$144,000	NA	1	12 1/2% RS1	E
G19097	GB	300	5760.00	A CW	\$2,568,110	\$1,600,000	\$1,600,000	NA	3	12 1/2% RS1	C
G19098	GB	301	5760.00	A CW	\$728,371	\$144,000	\$144,000	NA	1	12 1/2% RS1	E
G19099	GB	304	5760.00	A CW	\$2,679,110	\$1,600,000	\$1,600,000	NA	2	12 1/2% RS1	C
G19100	GB	305	5760.00	A CW	\$3,832,110	\$144,000	\$144,000	NA	1	12 1/2% RS1	C
G19101	GB	309	5760.00	A CW	\$634,310	\$144,000	\$144,000	NA	1	12 1/2% RS1	E
R G19102	GB	323	5760.00	A CW	\$524,160	\$1,100,000	\$1,100,000	\$683,407	2	16 2/3% RS	R
G19103	GB	326	5760.00	A CW	\$176,700	\$144,000	\$144,000	NA	1	16 2/3% RS	C
G19104	GB	329	5760.00	A CW	\$3,788,000	\$1,500,000	\$1,500,000	NA	4	12 1/2% RS1	C
G19106	GB	332	5760.00	A CW	\$342,800	\$144,000	\$144,000	NA	1	12 1/2% RS2	E
G19107	GB	339	5760.00	A CW	\$3,680,467	\$2,100,000	\$2,100,000	NA	1	12 1/2% RS1	C
G19108	GB	343	5760.00	A CW	\$4,671,110	\$2,500,000	\$2,500,000	NA	1	12 1/2% RS1	C
G19109	GB	353	5760.00	A CW	\$1,193,410	\$144,000	\$144,000	NA	1	12 1/2% RS1	E
G19110	GB	355	5760.00	A CW	\$452,622	\$144,000	\$144,000	NA	1	12 1/2% RS1	C
G19111	GB	380	5760.00	A CW	\$251,022	\$144,000	\$144,000	NA	1	12 1/2% RS1	E
G19112	GB	382	5760.00	A CW	\$2,677,110	\$2,300,000	\$2,300,000	NA	2	12 1/2% RS1	C
G19113	GB	383	5760.00	A CW	\$761,110	\$470,000	\$470,000	NA	1	12 1/2% RS2	C
G19114	GB	397	5760.00	A CW	\$3,131,313	\$144,000	\$144,000	NA	2	12 1/2% RS1	C
G19115	GB	398	5760.00	A CW	\$2,638,080	\$144,000	\$144,000	NA	3	12 1/2% RS1	C
G19116	GB	401	5760.00	A CW	\$162,720	\$144,000	\$144,000	NA	1	12 1/2% RS1	E
G19117	GB	414	5760.00	A CW	\$712,310	\$144,000	\$144,000	NA	1	12 1/2% RS1	E
G19118	GB	441	5760.00	A CW	\$3,131,313	\$144,000	\$144,000	NA	2	12 1/2% RS2	C
G19120	GB	454	5760.00	A CW	\$225,100	\$144,000	\$144,000	NA	1	12 1/2% RS1	E
G19121	GB	455	5760.00	A CW	\$3,707,700	\$144,000	\$144,000	NA	2	12 1/2% RS1	E
G19122	GB	456	5760.00	A CW	\$1,678,110	\$144,000	\$144,000	NA	2	12 1/2% RS1	E

R DENOTES TRACT WITH REJECTED HIGH BID

PHASE 2 DECISION INFORMATION MATRIX

Sale Number: 168

Page 10 of 29

Region Name: Gulf of Mexico OCS Region

Sale Identifier: WESTERN GULF OF MEXICO

Sale Date: AUGUST 27, 1997

OCS NUMBER	AREA CODE/ PROT NO	BLOCK NO.	ACRES/ HECTARES	TRACT TYPE	HIGH BID	MROV	ADV	RAM	ADJ #BIDS	ROYALTY RATE	TRACT DEC. RULE
G19123	GB	457	5760.00	A CW	\$3,978,000	\$144,000	\$144,000	NA	3	12 1/2% RS1	E
G19124	GB	458	5760.00	A CW	\$1,866,000	\$144,000	\$144,000	NA	4	12 1/2% RS1	E
G19126	GB	461	5760.00	A CW	\$643,210	\$144,000	\$144,000	NA	1	12 1/2% RS2	C
G19127	GB	462	5760.00	A CW	\$3,335,570	\$2,300,000	\$2,300,000	NA	3	12 1/2% RS2	C
G19128	GB	487	5760.00	A CW	\$714,610	\$144,000	\$144,000	NA	1	12 1/2% RS2	C
G19129	GB	497	5760.00	A CW	\$563,595	\$144,000	\$144,000	NA	1	12 1/2% RS1	E
G19130	GB	503	5760.00	A CW	\$306,817	\$144,000	\$144,000	NA	1	12 1/2% RS2	E
G19131	GB	524	5760.00	A CW	\$311,040	\$144,000	\$144,000	NA	2	12 1/2% RS2	E
G19132	GB	535	5760.00	A CW	\$7,253,690	\$2,900,000	\$2,900,000	NA	5	12 1/2% RS1	C
G19133	GB	543	5760.00	A CW	\$2,288,095	\$830,000	\$830,000	NA	2	12 1/2% RS1	C
G19135	GB	546	5760.00	A CW	\$193,527	\$144,000	\$144,000	NA	1	12 1/2% RS2	E
G19136	GB	547	5760.00	A CW	\$306,817	\$144,000	\$144,000	NA	1	12 1/2% RS2	E
G19137	GB	548	5760.00	A CW	\$356,817	\$144,000	\$144,000	NA	2	12 1/2% RS2	E
G19138	GB	551	5760.00	A CW	\$1,776,776	\$144,000	\$144,000	NA	2	12 1/2% RS2	E
G19140	GB	589	5760.00	A CW	\$306,817	\$144,000	\$144,000	NA	1	12 1/2% RS2	E
G19141	GB	590	5760.00	A CW	\$193,527	\$144,000	\$144,000	NA	1	12 1/2% RS2	E
G19142	GB	592	5760.00	A CW	\$406,817	\$144,000	\$144,000	NA	1	12 1/2% RS2	E
G19143	GB	631	5760.00	A CW	\$806,817	\$144,000	\$144,000	NA	1	12 1/2% RS2	E
G19144	GB	633	5760.00	A CW	\$406,817	\$144,000	\$144,000	NA	1	12 1/2% RS2	E
G19145	GB	634	5760.00	A CW	\$286,817	\$144,000	\$144,000	NA	1	12 1/2% RS2	E
G19146	GB	635	5760.00	A CW	\$306,817	\$144,000	\$144,000	NA	1	12 1/2% RS2	E
G19147	GB	636	5760.00	A CW	\$5,020,128	\$144,000	\$144,000	NA	1	12 1/2% RS2	C
G19148	GB	657	5760.00	A CW	\$330,657	\$144,000	\$144,000	NA	1	12 1/2% RS2	E
G19149	GB	675	5760.00	A CW	\$856,817	\$144,000	\$144,000	NA	1	12 1/2% RS2	E
G19150	GB	677	5760.00	A CW	\$570,240	\$144,000	\$144,000	NA	2	12 1/2% RS2	E
G19151	GB	678	5760.00	A CW	\$406,817	\$144,000	\$144,000	NA	1	12 1/2% RS2	E

PHASE 2 DECISION INFORMATION MATRIX

Sale Number: 168

Page 11 of 29

Region Name: Gulf of Mexico OCS Region

Sale Identifier: WESTERN GULF OF MEXICO

Sale Date: AUGUST 27, 1997

OCS NUMBER	AREA CODE/ PROT NO	BLOCK NO.	ACRES/ HECTARES	TRACT TYPE	HIGH BID	MROV	ADV	RAM	ADJ #BIDS	ROYALTY RATE	TRACT DEC. RULE
G19152	GB	679	5760.00	A CW	\$1,825,171	\$144,000	\$144,000	NA	2	12 1/2% RS2	C
G19153	GB	680	5760.00	A CW	\$511,200	\$144,000	\$144,000	NA	1	12 1/2% RS2	C
G19154	GB	700	5760.00	A CW	\$1,207,000	\$144,000	\$144,000	NA	1	12 1/2% RS2	E
G19155	GB	701	5760.00	A CW	\$1,207,010	\$144,000	\$144,000	NA	1	12 1/2% RS2	E
G19156	GB	708	5760.00	A CW	\$254,250	\$144,000	\$144,000	NA	1	12 1/2% RS2	E
G19157	GB	710	5760.00	A CW	\$307,100	\$144,000	\$144,000	NA	1	12 1/2% RS2	E
G19158	GB	713	5760.00	A CW	\$201,300	\$144,000	\$144,000	NA	1	12 1/2% RS2	E
G19159	GB	714	5760.00	A CW	\$412,325	\$144,000	\$144,000	NA	1	12 1/2% RS2	E
G19160	GB	718	5760.00	A CW	\$193,527	\$144,000	\$144,000	NA	1	12 1/2% RS2	E
G19161	GB	719	5760.00	A CW	\$606,817	\$144,000	\$144,000	NA	1	12 1/2% RS2	E
G19162	GB	720	5760.00	A CW	\$3,208,320	\$144,000	\$144,000	NA	3	12 1/2% RS2	E
G19163	GB	721	5760.00	A CW	\$3,208,320	\$144,000	\$144,000	NA	3	12 1/2% RS2	E
G19166	GB	745	5760.00	A CW	\$476,895	\$144,000	\$144,000	NA	1	12 1/2% RS2	E
G19167	GB	751	5760.00	A CW	\$144,750	\$144,000	\$144,000	NA	1	12 1/2% RS2	E
G19168	GB	757	5760.00	A CW	\$210,240	\$144,000	\$144,000	NA	1	12 1/2% RS2	E
G19169	GB	762	5760.00	A CW	\$256,817	\$144,000	\$144,000	NA	1	12 1/2% RS2	E
G19170	GB	763	5760.00	A CW	\$356,817	\$144,000	\$144,000	NA	1	12 1/2% RS2	E
G19171	GB	764	5760.00	A CW	\$3,208,320	\$144,000	\$144,000	NA	2	12 1/2% RS2	E
G19172	GB	770	5760.00	A CW	\$406,817	\$144,000	\$144,000	NA	1	12 1/2% RS2	E
G19173	GB	773	5760.00	A CW	\$193,527	\$144,000	\$144,000	NA	1	12 1/2% RS2	E
G19174	GB	777	5760.00	A CW	\$158,400	\$144,000	\$144,000	NA	1	12 1/2% RS2	E
G19175	GB	778	5760.00	A CW	\$158,400	\$144,000	\$144,000	NA	1	12 1/2% RS2	E
G19176	GB	780	5760.00	A CW	\$3,057,800	\$144,000	\$144,000	NA	2	12 1/2% RS2	E
G19177	GB	781	5760.00	A CW	\$3,117,810	\$144,000	\$144,000	NA	4	12 1/2% RS2	E
G19178	GB	788	5760.00	A CW	\$377,480	\$144,000	\$144,000	NA	1	12 1/2% RS2	E
G19179	GB	789	5760.00	A CW	\$2,303,775	\$144,000	\$144,000	NA	1	12 1/2% RS2	E

PHASE 2 DECISION INFORMATION MATRIX

Sale Number: 168

Page 12 of 29

Region Name: Gulf of Mexico OCS Region

Sale Identifier: WESTERN GULF OF MEXICO

Sale Date: AUGUST 27, 1997

OCS NUMBER	AREA CODE/ PROT NO	BLOCK NO.	ACRES/ HECTARES	TRACT TYPE	HIGH BID	MROV	ADV	RAM	ADJ #BIDS	ROYALTY RATE	TRACT DEC. RULE
G19180	GB	795	5760.00	A CW	\$173,100	\$144,000	\$144,000	NA	1	12 1/2% RS2	E
G19181	GB	805	5760.00	A CW	\$1,009,895	\$144,000	\$144,000	NA	1	12 1/2% RS2	E
G19182	GB	818	5760.00	A CW	\$461,340	\$144,000	\$144,000	NA	2	12 1/2% RS2	E
G19183	GB	825	5760.00	A CW	\$1,251,440	\$144,000	\$144,000	NA	3	12 1/2% RS2	E
R G19184	GB	827	5760.00	A CW	\$360,200	\$3,800,000	\$3,800,000	\$1,451,242	2	12 1/2% RS2	R
R G19185	GB	828	5760.00	A CW	\$306,817	\$3,200,000	\$3,200,000	NA	1	12 1/2% RS2	R
G19186	GB	829	5760.00	A CW	\$356,817	\$144,000	\$144,000	NA	1	12 1/2% RS2	E
G19187	GB	830	5760.00	A CW	\$356,817	\$144,000	\$144,000	NA	1	12 1/2% RS2	E
G19188	GB	831	5760.00	A CW	\$381,000	\$144,000	\$144,000	NA	2	12 1/2% RS2	E
G19189	GB	832	5760.00	A CW	\$191,000	\$144,000	\$144,000	NA	1	12 1/2% RS2	E
G19190	GB	839	5760.00	A CW	\$1,318,390	\$144,000	\$144,000	NA	2	12 1/2% RS2	E
G19191	GB	840	5760.00	A CW	\$2,127,000	\$144,000	\$144,000	NA	3	12 1/2% RS2	E
R G19192	GB	841	5760.00	A CW	\$3,588,480	\$6,600,000	\$6,600,000	\$4,252,096	3	12 1/2% RS2	R
G19193	GB	844	5760.00	A CW	\$238,464	\$144,000	\$144,000	NA	2	12 1/2% RS2	E
G19194	GB	847	5760.00	A CW	\$175,680	\$144,000	\$144,000	NA	1	12 1/2% RS2	E
G19195	GB	859	5760.00	A CW	\$606,817	\$144,000	\$144,000	NA	2	12 1/2% RS2	E
G19196	GB	860	5760.00	A CW	\$1,327,645	\$144,000	\$144,000	NA	3	12 1/2% RS2	E
G19197	GB	864	5760.00	A CW	\$193,527	\$144,000	\$144,000	NA	1	12 1/2% RS2	E
G19198	GB	867	5760.00	A CW	\$326,776	\$144,000	\$144,000	NA	1	12 1/2% RS2	E
G19199	GB	870	5760.00	A CW	\$406,817	\$144,000	\$144,000	NA	1	12 1/2% RS2	E
G19200	GB	884	5760.00	A CW	\$692,000	\$144,000	\$144,000	NA	2	12 1/2% RS2	E
G19201	GB	887	5760.00	A CW	\$1,545,408	\$144,000	\$144,000	NA	3	12 1/2% RS2	E
G19202	GB	888	5760.00	A CW	\$762,048	\$144,000	\$144,000	NA	3	12 1/2% RS2	E
G19203	GB	891	5760.00	A CW	\$703,089	\$144,000	\$144,000	NA	1	12 1/2% RS2	C
G19204	GB	892	5760.00	A CW	\$489,089	\$144,000	\$144,000	NA	2	12 1/2% RS2	E
G19205	GB	893	5760.00	A CW	\$326,776	\$144,000	\$144,000	NA	1	12 1/2% RS2	E

R DENOTES TRACT WITH REJECTED HIGH BID

PHASE 2 DECISION INFORMATION MATRIX

Sale Number: 168

Page 13 of 29

Region Name: Gulf of Mexico OCS Region

Sale Identifier: WESTERN GULF OF MEXICO

Sale Date: AUGUST 27, 1997

OCS NUMBER	AREA CODE/ PROT NO	BLOCK NO.	ACRES/ HECTARES	TRACT TYPE	HIGH BID	MROV	ADV	RAM	ADJ #BIDS	ROYALTY RATE	TRACT DEC. RULE
G19206	GB	899	5760.00	A CW	\$2,524,440	\$2,200,000	\$2,200,000	NA	2	12 1/2% RS2	C
G19207	GB	900	5760.00	A CW	\$216,440	\$144,000	\$144,000	NA	1	12 1/2% RS2	E
G19208	GB	904	5760.00	A CW	\$3,265,920	\$1,300,000	\$1,300,000	NA	4	12 1/2% RS2	C
G19209	GB	908	5760.00	A CW	\$193,527	\$144,000	\$144,000	NA	1	12 1/2% RS2	E
G19210	GB	911	5760.00	A CW	\$3,113,000	\$144,000	\$144,000	NA	1	12 1/2% RS2	C
G19211	GB	914	5760.00	A CW	\$193,527	\$144,000	\$144,000	NA	1	12 1/2% RS2	E
G19212	GB	915	5760.00	A CW	\$193,527	\$144,000	\$144,000	NA	1	12 1/2% RS2	E
G19213	GB	925	5760.00	A CW	\$225,776	\$144,000	\$144,000	NA	1	12 1/2% RS2	E
G19214	GB	927	5760.00	A CW	\$225,776	\$144,000	\$144,000	NA	1	12 1/2% RS2	E
G19215	GB	928	5760.00	A CW	\$410,089	\$144,000	\$144,000	NA	2	12 1/2% RS2	E
G19217	GB	932	5760.00	A CW	\$151,000	\$144,000	\$144,000	NA	1	12 1/2% RS2	E
R G19218	GB	941	5760.00	A CW	\$570,240	\$3,100,000	\$3,100,000	NA	1	12 1/2% RS2	R
G19219	GB	943	5760.00	A CW	\$857,700	\$370,000	\$370,000	NA	2	12 1/2% RS2	C
G19220	GB	944	5760.00	A CW	\$1,457,700	\$144,000	\$144,000	NA	2	12 1/2% RS2	E
G19221	GB	948	5760.00	A CW	\$4,245,120	\$144,000	\$144,000	NA	3	12 1/2% RS2	C
G19222	GB	949	5760.00	A CW	\$9,113,000	\$2,800,000	\$2,800,000	NA	4	12 1/2% RS2	C
G19223	GB	955	5760.00	A CW	\$8,513,000	\$7,100,000	\$7,100,000	NA	2	12 1/2% RS2	C
G19224	GB	956	5760.00	A CW	\$633,000	\$144,000	\$144,000	NA	1	12 1/2% RS2	E
G19225	GB	957	5760.00	A CW	\$633,000	\$144,000	\$144,000	NA	1	12 1/2% RS2	E
G19226	GB	958	5760.00	A CW	\$633,000	\$144,000	\$144,000	NA	2	12 1/2% RS2	C
G19227	GB	959	5760.00	A CW	\$306,817	\$144,000	\$144,000	NA	1	12 1/2% RS2	C
G19228	GB	969	5760.00	A CW	\$326,776	\$144,000	\$144,000	NA	1	12 1/2% RS2	E
G19231	GB	973	5760.00	A CW	\$176,776	\$144,000	\$144,000	NA	1	12 1/2% RS2	E
G19232	GB	980	5760.00	A CW	\$198,190	\$144,000	\$144,000	NA	1	12 1/2% RS2	E
R G19233	GB	985	5760.00	A CW	\$155,520	\$680,000	\$680,000	NA	1	12 1/2% RS2	R
G19234	GB	992	5760.00	A CW	\$456,817	\$144,000	\$144,000	NA	1	12 1/2% RS2	E

R DENOTES TRACT WITH REJECTED HIGH BID

PHASE 2 DECISION INFORMATION MATRIX

Sale Number: 168

Page 14 of 29

Region Name: Gulf of Mexico OCS Region

Sale Identifier: WESTERN GULF OF MEXICO

Sale Date: AUGUST 27, 1997

OCS NUMBER	AREA CODE/ PROT NO	BLOCK NO.	ACRES/ HECTARES	TRACT TYPE	HIGH BID	MROV	ADV	RAM	ADJ #BIDS	ROYALTY RATE	TRACT DEC. RULE
G19235	GB	997	5760.00	A CW	\$2,572,508	\$144,000	\$144,000	NA	2	12 1/2% RS2	C
G19236	GB	998	5760.00	A CW	\$193,527	\$144,000	\$144,000	NA	1	12 1/2% RS2	E
G19237	GB	999	5760.00	A CW	\$1,413,000	\$144,000	\$144,000	NA	1	12 1/2% RS2	E
G19238	GB	1000	5760.00	A CW	\$333,000	\$144,000	\$144,000	NA	1	12 1/2% RS2	E
G19239	GB	1001	5760.00	A CW	\$1,160,925	\$144,000	\$144,000	NA	2	12 1/2% RS2	E
G19240	GB	1002	5760.00	A CW	\$1,178,000	\$144,000	\$144,000	NA	2	12 1/2% RS2	E
G19241	GB	1003	5760.00	A CW	\$406,817	\$144,000	\$144,000	NA	1	12 1/2% RS2	E
G19242	GB	1008	5760.00	A CW	\$306,110	\$144,000	\$144,000	NA	1	12 1/2% RS2	E
G19246	PI	40	5760.00	A CW	\$838,560	\$144,000	\$144,000	NA	1	12 1/2% RS2	E
G19247	PI	41	5760.00	A CW	\$1,127,808	\$144,000	\$144,000	NA	1	12 1/2% RS2	E
G19249	PI	85	5760.00	A CW	\$179,712	\$144,000	\$144,000	NA	1	12 1/2% RS2	E
G19252	PI	747	5760.00	A CW	\$157,305	\$144,000	\$144,000	NA	1	12 1/2% RS2	E
G19253	AC	6	5760.00	A CW	\$156,672	\$144,000	\$144,000	NA	1	12 1/2% RS2	E
G19254	AC	7	5760.00	A CW	\$311,616	\$280,000	\$280,000	NA	1	12 1/2% RS2	C
G19255	AC	8	5760.00	A CW	\$612,864	\$144,000	\$144,000	NA	1	12 1/2% RS2	C
G19256	AC	12	5760.00	A CW	\$270,089	\$144,000	\$144,000	NA	1	12 1/2% RS2	E
R G19257	AC	13	5760.00	A CW	\$1,517,000	\$5,100,000	\$5,100,000	NA	2	12 1/2% RS2	R
G19258	AC	14	5760.00	A CW	\$413,000	\$144,000	\$144,000	NA	1	12 1/2% RS2	E
G19259	AC	17	5760.00	A CW	\$613,000	\$144,000	\$144,000	NA	1	12 1/2% RS2	E
G19260	AC	18	5760.00	A CW	\$2,212,000	\$144,000	\$144,000	NA	1	12 1/2% RS2	E
G19261	AC	19	5760.00	A CW	\$811,000	\$144,000	\$144,000	NA	1	12 1/2% RS2	C
G19262	AC	29	5760.00	A CW	\$226,776	\$144,000	\$144,000	NA	2	12 1/2% RS2	E
G19263	AC	51	5760.00	A CW	\$2,141,568	\$2,100,000	\$2,100,000	NA	1	12 1/2% RS2	C
G19264	AC	52	5760.00	A CW	\$1,138,176	\$1,100,000	\$1,100,000	NA	1	12 1/2% RS2	C
G19265	AC	53	5760.00	A CW	\$646,272	\$144,000	\$144,000	NA	1	12 1/2% RS2	E
G19266	AC	58	5760.00	A CW	\$1,513,000	\$144,000	\$144,000	NA	2	12 1/2% RS2	E

R DENOTES TRACT WITH REJECTED HIGH BID

PHASE 2 DECISION INFORMATION MATRIX

Sale Number: 168

Page 15 of 29

Region Name: Gulf of Mexico OCS Region

Sale Identifier: WESTERN GULF OF MEXICO

Sale Date: AUGUST 27, 1997

OCS NUMBER	AREA CODE/ PROT NO	BLOCK NO.	ACRES/ HECTARES	TRACT TYPE	HIGH BID	MROV	ADV	RAM	ADJ #BIDS	ROYALTY RATE	TRACT DEC. RULE
G19267	AC	59	5760.00	A CW	\$933,000	\$144,000	\$144,000	NA	2	12 1/2% RS2	E
G19268	AC	60	5760.00	A CW	\$311,000	\$144,000	\$144,000	NA	1	12 1/2% RS2	E
G19269	AC	61	5760.00	A CW	\$311,000	\$144,000	\$144,000	NA	1	12 1/2% RS2	E
G19270	AC	72	5760.00	A CW	\$281,776	\$144,000	\$144,000	NA	2	12 1/2% RS2	E
G19271	AC	73	5760.00	A CW	\$5,397,000	\$3,900,000	\$3,900,000	NA	5	12 1/2% RS2	C
G19272	AC	96	5760.00	A CW	\$311,616	\$144,000	\$144,000	NA	1	12 1/2% RS2	E
G19273	AC	97	5760.00	A CW	\$259,776	\$144,000	\$144,000	NA	1	12 1/2% RS2	E
G19274	AC	101	5760.00	A CW	\$218,000	\$144,000	\$144,000	NA	1	12 1/2% RS2	E
G19275	AC	102	5760.00	A CW	\$221,000	\$144,000	\$144,000	NA	1	12 1/2% RS2	E
G19276	AC	103	5760.00	A CW	\$224,000	\$144,000	\$144,000	NA	1	12 1/2% RS2	E
G19277	AC	104	5760.00	A CW	\$226,000	\$144,000	\$144,000	NA	1	12 1/2% RS2	E
G19278	AC	116	5760.00	A CW	\$206,817	\$160,000	\$160,000	NA	1	12 1/2% RS2	C
G19279	AC	117	5760.00	A CW	\$3,341,000	\$3,100,000	\$3,100,000	NA	3	12 1/2% RS2	C
G19280	AC	147	5760.00	A CW	\$221,000	\$144,000	\$144,000	NA	1	12 1/2% RS2	E
G19281	AC	148	5760.00	A CW	\$1,113,000	\$144,000	\$144,000	NA	2	12 1/2% RS2	E
G19282	AC	150	5760.00	A CW	\$853,000	\$144,000	\$144,000	NA	1	12 1/2% RS2	E
G19283	AC	151	5760.00	A CW	\$853,000	\$144,000	\$144,000	NA	1	12 1/2% RS2	E
G19284	AC	161	5760.00	A CW	\$356,817	\$144,000	\$144,000	NA	1	12 1/2% RS2	E
G19285	AC	178	5760.00	A CW	\$237,312	\$144,000	\$144,000	NA	1	12 1/2% RS2	C
G19286	AC	180	5760.00	A CW	\$157,305	\$144,000	\$144,000	NA	1	12 1/2% RS2	E
G19287	AC	191	5760.00	A CW	\$216,000	\$144,000	\$144,000	NA	1	12 1/2% RS2	E
G19288	AC	192	5760.00	A CW	\$311,000	\$144,000	\$144,000	NA	3	12 1/2% RS2	E
G19289	AC	193	5760.00	A CW	\$226,000	\$144,000	\$144,000	NA	1	12 1/2% RS2	E
R G19290	AC	194	5760.00	A CW	\$812,160	\$2,000,000	\$2,000,000	\$1,168,387	2	12 1/2% RS2	R
R G19291	AC	195	5760.00	A CW	\$812,160	\$3,100,000	\$3,100,000	\$1,207,172	3	12 1/2% RS2	R
G19292	AC	224	5760.00	A CW	\$157,305	\$144,000	\$144,000	NA	1	12 1/2% RS2	E

R DENOTES TRACT WITH REJECTED HIGH BID

PHASE 2 DECISION INFORMATION MATRIX

Sale Number: 168

Page 16 of 29

Region Name: Gulf of Mexico OCS Region

Sale Identifier: WESTERN GULF OF MEXICO

Sale Date: AUGUST 27, 1997

OCs NUMBER	AREA CODE/ PROT NO	BLOCK NO.	ACRES/ HECTARES	TRACT TYPE	HIGH BID	MROV	ADV	RAM	ADJ #BIDS	ROYALTY RATE	TRACT DEC. RULE
G19293	AC	237	5760.00	A CW	\$196,000	\$144,000	\$144,000	NA	1	12 1/2% RS2	E
G19294	AC	238	5760.00	A CW	\$413,000	\$144,000	\$144,000	NA	1	12 1/2% RS2	E
G19295	AC	239	5760.00	A CW	\$311,000	\$144,000	\$144,000	NA	1	12 1/2% RS2	E
G19296	AC	298	5760.00	A CW	\$281,260	\$144,000	\$144,000	NA	1	12 1/2% RS2	E
G19297	AC	301	5760.00	A CW	\$281,260	\$144,000	\$144,000	NA	1	12 1/2% RS2	E
G19298	AC	317	5760.00	A CW	\$147,600	\$144,000	\$144,000	NA	1	12 1/2% RS2	E
G19299	AC	318	5760.00	A CW	\$195,525	\$144,000	\$144,000	NA	2	12 1/2% RS2	E
G19300	AC	335	5760.00	A CW	\$827,193	\$144,000	\$144,000	NA	1	12 1/2% RS2	E
G19301	AC	336	5760.00	A CW	\$827,193	\$144,000	\$144,000	NA	2	12 1/2% RS2	E
G19302	AC	337	5760.00	A CW	\$1,261,832	\$144,000	\$144,000	NA	2	12 1/2% RS2	E
G19303	AC	345	5760.00	A CW	\$281,260	\$144,000	\$144,000	NA	1	12 1/2% RS2	E
G19304	AC	361	5760.00	A CW	\$293,285	\$144,000	\$144,000	NA	1	12 1/2% RS2	E
G19305	AC	362	5760.00	A CW	\$450,790	\$144,000	\$144,000	NA	2	12 1/2% RS2	E
G19306	AC	378	5760.00	A CW	\$157,305	\$144,000	\$144,000	NA	1	12 1/2% RS2	E
G19307	AC	379	5760.00	A CW	\$439,258	\$144,000	\$144,000	NA	1	12 1/2% RS2	E
G19308	AC	380	5760.00	A CW	\$4,358,937	\$144,000	\$144,000	NA	2	12 1/2% RS2	E
G19309	AC	383	5760.00	A CW	\$218,358	\$144,000	\$144,000	NA	1	12 1/2% RS2	E
G19310	AC	386	5760.00	A CW	\$281,260	\$144,000	\$144,000	NA	1	12 1/2% RS2	E
G19311	AC	387	5760.00	A CW	\$281,260	\$144,000	\$144,000	NA	1	12 1/2% RS2	E
G19312	AC	391	5760.00	A CW	\$147,600	\$144,000	\$144,000	NA	1	12 1/2% RS2	E
G19313	AC	393	5760.00	A CW	\$326,776	\$144,000	\$144,000	NA	1	12 1/2% RS2	E
G19314	AC	403	5760.00	A CW	\$157,305	\$144,000	\$144,000	NA	1	12 1/2% RS2	E
G19315	AC	405	5760.00	A CW	\$527,406	\$144,000	\$144,000	NA	2	12 1/2% RS2	E
G19316	AC	406	5760.00	A CW	\$181,612	\$144,000	\$144,000	NA	2	12 1/2% RS2	E
G19317	AC	407	5760.00	A CW	\$388,571	\$144,000	\$144,000	NA	1	12 1/2% RS2	E
G19318	AC	422	5760.00	A CW	\$157,305	\$144,000	\$144,000	NA	1	12 1/2% RS2	E

PHASE 2 DECISION INFORMATION MATRIX

Sale Number: 168

Page 17 of 29

Region Name: Gulf of Mexico OCS Region

Sale Identifier: WESTERN GULF OF MEXICO

Sale Date: AUGUST 27, 1997

OCS NUMBER	AREA CODE/ PROT NO	BLOCK NO.	ACRES/ HECTARES	TRACT TYPE	HIGH BID	MROV	ADV	RAM	ADJ #BIDS	ROYALTY RATE	TRACT DEC. RULE
G19319	AC	423	5760.00	A CW	\$632,589	\$144,000	\$144,000	NA	1	12 1/2% RS2	E
G19320	AC	424	5760.00	A CW	\$331,833	\$144,000	\$144,000	NA	2	12 1/2% RS2	E
G19321	AC	426	5760.00	A CW	\$173,232	\$144,000	\$144,000	NA	1	12 1/2% RS2	E
G19322	AC	427	5760.00	A CW	\$418,728	\$144,000	\$144,000	NA	1	12 1/2% RS2	E
G19323	AC	435	5760.00	A CW	\$147,600	\$144,000	\$144,000	NA	1	12 1/2% RS2	E
G19324	AC	436	5760.00	A CW	\$326,776	\$144,000	\$144,000	NA	2	12 1/2% RS2	E
G19325	AC	437	5760.00	A CW	\$226,776	\$144,000	\$144,000	NA	1	12 1/2% RS2	E
G19326	AC	449	5760.00	A CW	\$278,784	\$144,000	\$144,000	NA	1	12 1/2% RS2	E
G19327	AC	465	5760.00	A CW	\$157,305	\$144,000	\$144,000	NA	1	12 1/2% RS2	E
G19328	AC	467	5760.00	A CW	\$184,323	\$144,000	\$144,000	NA	1	12 1/2% RS2	E
G19329	AC	468	5760.00	A CW	\$216,333	\$144,000	\$144,000	NA	1	12 1/2% RS2	E
G19330	AC	470	5760.00	A CW	\$418,728	\$144,000	\$144,000	NA	1	12 1/2% RS2	E
G19331	AC	471	5760.00	A CW	\$418,728	\$144,000	\$144,000	NA	1	12 1/2% RS2	E
G19332	AC	479	5760.00	A CW	\$158,600	\$144,000	\$144,000	NA	1	12 1/2% RS2	E
G19333	AC	480	5760.00	A CW	\$464,130	\$144,000	\$144,000	NA	1	12 1/2% RS2	E
G19334	AC	481	5760.00	A CW	\$619,335	\$144,000	\$144,000	NA	1	12 1/2% RS2	E
G19335	AC	509	5760.00	A CW	\$157,305	\$144,000	\$144,000	NA	1	12 1/2% RS2	E
G19336	AC	511	5760.00	A CW	\$269,325	\$144,000	\$144,000	NA	1	12 1/2% RS2	E
G19337	AC	512	5760.00	A CW	\$229,314	\$144,000	\$144,000	NA	1	12 1/2% RS2	E
G19338	AC	514	5760.00	A CW	\$418,728	\$144,000	\$144,000	NA	1	12 1/2% RS2	E
G19339	AC	515	5760.00	A CW	\$182,286	\$144,000	\$144,000	NA	1	12 1/2% RS2	E
G19340	AC	522	5760.00	A CW	\$158,600	\$144,000	\$144,000	NA	1	12 1/2% RS2	E
G19341	AC	523	5760.00	A CW	\$309,213	\$144,000	\$144,000	NA	1	12 1/2% RS2	E
G19342	AC	524	5760.00	A CW	\$619,335	\$144,000	\$144,000	NA	1	12 1/2% RS2	E
G19343	AC	525	5760.00	A CW	\$619,335	\$144,000	\$144,000	NA	1	12 1/2% RS2	E
G19344	AC	553	5760.00	A CW	\$157,305	\$144,000	\$144,000	NA	1	12 1/2% RS2	E

PHASE 2 DECISION INFORMATION MATRIX

Sale Number: 168

Page 18 of 29

Region Name: Gulf of Mexico OCS Region

Sale Identifier: WESTERN GULF OF MEXICO

Sale Date: AUGUST 27, 1997

OCS NUMBER	AREA CODE/ PROT NO	BLOCK NO.	ACRES/ HECTARES	TRACT TYPE	HIGH BID	MROV	ADV	RAM	ADJ #BIDS	ROYALTY RATE	TRACT DEC. RULE
G19345	AC	564	5760.00	A CW	\$193,527	\$144,000	\$144,000	NA	2	12 1/2% RS2	E
G19346	AC	565	5760.00	A CW	\$193,527	\$144,000	\$144,000	NA	2	12 1/2% RS2	E
G19347	AC	566	5760.00	A CW	\$158,600	\$144,000	\$144,000	NA	1	12 1/2% RS2	E
G19348	AC	567	5760.00	A CW	\$569,817	\$144,000	\$144,000	NA	1	12 1/2% RS2	E
G19349	AC	568	5760.00	A CW	\$619,335	\$144,000	\$144,000	NA	1	12 1/2% RS2	E
G19350	AC	569	5760.00	A CW	\$162,567	\$144,000	\$144,000	NA	1	12 1/2% RS2	E
G19351	AC	587	5760.00	A CW	\$157,305	\$144,000	\$144,000	NA	1	12 1/2% RS2	E
G19352	AC	603	5760.00	A CW	\$179,302	\$144,000	\$144,000	NA	1	12 1/2% RS2	E
G19353	AC	604	5760.00	A CW	\$364,032	\$144,000	\$144,000	NA	1	12 1/2% RS2	E
G19354	AC	605	5760.00	A CW	\$179,302	\$144,000	\$144,000	NA	1	12 1/2% RS2	E
G19356	AC	608	5760.00	A CW	\$406,817	\$144,000	\$144,000	NA	3	12 1/2% RS2	E
G19357	AC	609	5760.00	A CW	\$158,600	\$144,000	\$144,000	NA	1	12 1/2% RS2	E
G19358	AC	610	5760.00	A CW	\$158,600	\$144,000	\$144,000	NA	1	12 1/2% RS2	E
G19359	AC	611	5760.00	A CW	\$162,567	\$144,000	\$144,000	NA	1	12 1/2% RS2	E
G19360	AC	612	5760.00	A CW	\$162,567	\$144,000	\$144,000	NA	1	12 1/2% RS2	E
G19361	AC	640	5760.00	A CW	\$275,328	\$144,000	\$144,000	NA	2	12 1/2% RS2	E
G19362	AC	641	5760.00	A CW	\$335,232	\$144,000	\$144,000	NA	2	12 1/2% RS2	E
G19363	AC	649	5760.00	A CW	\$179,302	\$144,000	\$144,000	NA	1	12 1/2% RS2	E
G19364	AC	650	5760.00	A CW	\$406,817	\$144,000	\$144,000	NA	3	12 1/2% RS2	E
G19365	AC	651	5760.00	A CW	\$3,322,508	\$144,000	\$144,000	NA	3	12 1/2% RS2	E
G19366	AC	652	5760.00	A CW	\$2,022,508	\$144,000	\$144,000	NA	2	12 1/2% RS2	E
G19367	AC	653	5760.00	A CW	\$158,600	\$144,000	\$144,000	NA	1	12 1/2% RS2	E
G19368	AC	654	5760.00	A CW	\$158,600	\$144,000	\$144,000	NA	1	12 1/2% RS2	E
G19369	AC	655	5760.00	A CW	\$158,600	\$144,000	\$144,000	NA	1	12 1/2% RS2	E
G19370	AC	674	5760.00	A CW	\$208,512	\$144,000	\$144,000	NA	1	12 1/2% RS2	E
G19371	AC	675	5760.00	A CW	\$331,833	\$144,000	\$144,000	NA	2	12 1/2% RS2	E

PHASE 2 DECISION INFORMATION MATRIX

Sale Number: 168

Page 19 of 29

Region Name: Gulf of Mexico OCS Region

Sale Identifier: WESTERN GULF OF MEXICO

Sale Date: AUGUST 27, 1997

OCS NUMBER	AREA CODE/ PROT NO	BLOCK NO.	ACRES/ HECTARES	TRACT TYPE	HIGH BID	MROV	ADV	RAM	ADJ #BIDS	ROYALTY RATE	TRACT DEC. RULE
G19372	AC	676	5760.00	A CW	\$331,833	\$144,000	\$144,000	NA	1	12 1/2% RS2	E
G19373	AC	685	5760.00	A CW	\$439,258	\$144,000	\$144,000	NA	2	12 1/2% RS2	E
G19374	AC	693	5760.00	A CW	\$179,302	\$144,000	\$144,000	NA	1	12 1/2% RS2	E
G19375	AC	694	5760.00	A CW	\$2,122,508	\$144,000	\$144,000	NA	3	12 1/2% RS2	E
G19376	AC	695	5760.00	A CW	\$3,022,508	\$144,000	\$144,000	NA	3	12 1/2% RS2	E
G19377	AC	696	5760.00	A CW	\$206,817	\$144,000	\$144,000	NA	2	12 1/2% RS2	E
G19378	AC	697	5760.00	A CW	\$158,600	\$144,000	\$144,000	NA	1	12 1/2% RS2	E
G19379	AC	698	5760.00	A CW	\$232,600	\$144,000	\$144,000	NA	1	12 1/2% RS2	E
G19380	AC	699	5760.00	A CW	\$158,600	\$144,000	\$144,000	NA	1	12 1/2% RS2	E
G19381	AC	718	5760.00	A CW	\$882,432	\$144,000	\$144,000	NA	1	12 1/2% RS2	E
G19382	AC	719	5760.00	A CW	\$816,768	\$144,000	\$144,000	NA	2	12 1/2% RS2	E
G19383	AC	720	5760.00	A CW	\$331,833	\$144,000	\$144,000	NA	2	12 1/2% RS2	E
G19384	AC	726	5760.00	A CW	\$628,992	\$144,000	\$144,000	NA	1	12 1/2% RS2	E
G19385	AC	729	5760.00	A CW	\$439,258	\$144,000	\$144,000	NA	1	12 1/2% RS2	E
G19387	AC	732	5760.00	A CW	\$1,536,768	\$144,000	\$144,000	NA	2	12 1/2% RS2	E
G19388	AC	737	5760.00	A CW	\$278,324	\$144,000	\$144,000	NA	1	12 1/2% RS2	E
G19390	AC	739	5760.00	A CW	\$439,258	\$144,000	\$144,000	NA	3	12 1/2% RS2	E
G19391	AC	740	5760.00	A CW	\$193,527	\$144,000	\$144,000	NA	2	12 1/2% RS2	E
G19392	AC	741	5760.00	A CW	\$367,728	\$144,000	\$144,000	NA	1	12 1/2% RS2	E
G19393	AC	742	5760.00	A CW	\$158,600	\$144,000	\$144,000	NA	1	12 1/2% RS2	E
G19394	AC	757	5760.00	A CW	\$157,305	\$144,000	\$144,000	NA	1	12 1/2% RS2	E
G19395	AC	762	5760.00	A CW	\$208,512	\$144,000	\$144,000	NA	1	12 1/2% RS2	E
G19396	AC	763	5760.00	A CW	\$684,288	\$144,000	\$144,000	NA	2	12 1/2% RS2	E
G19397	AC	764	5760.00	A CW	\$208,512	\$144,000	\$144,000	NA	2	12 1/2% RS2	E
G19398	AC	769	5760.00	A CW	\$152,300	\$144,000	\$144,000	NA	1	12 1/2% RS2	E
G19400	AC	771	5760.00	A CW	\$376,776	\$144,000	\$144,000	NA	3	12 1/2% RS2	E

PHASE 2 DECISION INFORMATION MATRIX

Sale Number: 168

Page 20 of 29

Region Name: Gulf of Mexico OCS Region

Sale Identifier: WESTERN GULF OF MEXICO

Sale Date: AUGUST 27, 1997

OCS NUMBER	AREA CODE/ PROT NO	BLOCK NO.	ACRES/ HECTARES	TRACT TYPE	HIGH BID	MROV	ADV	RAM	ADJ #BIDS	ROYALTY RATE	TRACT DEC. RULE
G19402	AC	776	5760.00	A CW	\$1,168,128	\$144,000	\$144,000	NA	1	12 1/2% RS2	E
G19403	AC	777	5760.00	A CW	\$192,366	\$144,000	\$144,000	NA	1	12 1/2% RS2	E
G19404	AC	782	5760.00	A CW	\$162,213	\$144,000	\$144,000	NA	1	12 1/2% RS2	E
G19405	AC	783	5760.00	A CW	\$315,618	\$144,000	\$144,000	NA	1	12 1/2% RS2	E
G19406	AC	784	5760.00	A CW	\$732,618	\$144,000	\$144,000	NA	1	12 1/2% RS2	E
G19407	AC	785	5760.00	A CW	\$152,600	\$144,000	\$144,000	NA	1	12 1/2% RS2	E
G19408	AC	808	5760.00	A CW	\$208,512	\$144,000	\$144,000	NA	1	12 1/2% RS2	E
G19409	AC	815	5760.00	A CW	\$157,305	\$144,000	\$144,000	NA	1	12 1/2% RS2	E
G19410	AC	822	5760.00	A CW	\$192,366	\$144,000	\$144,000	NA	1	12 1/2% RS2	E
G19411	AC	823	5760.00	A CW	\$3,300,480	\$1,100,000	\$1,100,000	NA	3	12 1/2% RS2	C
G19412	AC	825	5760.00	A CW	\$158,600	\$144,000	\$144,000	NA	1	12 1/2% RS2	E
G19413	AC	826	5760.00	A CW	\$712,314	\$144,000	\$144,000	NA	1	12 1/2% RS2	E
G19414	AC	828	5760.00	A CW	\$461,397	\$144,000	\$144,000	NA	1	12 1/2% RS2	E
G19415	AC	855	5760.00	A CW	\$2,408,000	\$144,000	\$144,000	NA	1	12 1/2% RS2	E
G19416	AC	860	5760.00	A CW	\$331,833	\$144,000	\$144,000	NA	1	12 1/2% RS2	E
G19417	AC	861	5760.00	A CW	\$827,193	\$144,000	\$144,000	NA	1	12 1/2% RS2	E
G19418	AC	864	5760.00	A CW	\$368,223	\$144,000	\$144,000	NA	1	12 1/2% RS2	E
G19419	AC	865	5760.00	A CW	\$317,262	\$144,000	\$144,000	NA	1	12 1/2% RS2	E
G19420	AC	866	5760.00	A CW	\$2,511,360	\$770,000	\$770,000	NA	3	12 1/2% RS2	C
G19421	AC	867	5760.00	A CW	\$1,520,640	\$750,000	\$750,000	NA	3	12 1/2% RS2	C
G19422	AC	868	5760.00	A CW	\$158,600	\$144,000	\$144,000	NA	1	12 1/2% RS2	E
G19423	AC	869	5760.00	A CW	\$158,600	\$144,000	\$144,000	NA	1	12 1/2% RS2	E
G19424	AC	870	5760.00	A CW	\$344,600	\$144,000	\$144,000	NA	1	12 1/2% RS2	E
G19425	AC	871	5760.00	A CW	\$322,600	\$144,000	\$144,000	NA	1	12 1/2% RS2	E
G19426	AC	905	5760.00	A CW	\$827,193	\$144,000	\$144,000	NA	1	12 1/2% RS2	E
G19427	AC	909	5760.00	A CW	\$227,800	\$144,000	\$144,000	NA	1	12 1/2% RS2	E

PHASE 2 DECISION INFORMATION MATRIX

Sale Number: 168

Page 21 of 29

Region Name: Gulf of Mexico OCS Region

Sale Identifier: WESTERN GULF OF MEXICO

Sale Date: AUGUST 27, 1997

OCS NUMBER	AREA CODE/ PROT NO	BLOCK NO.	ACRES/ HECTARES	TRACT TYPE	HIGH BID	MROV	ADV	RAM	ADJ #BIDS	ROYALTY RATE	TRACT DEC. RULE
G19428	AC	910	5760.00	A CW	\$227,800	\$144,000	\$144,000	NA	1	12 1/2% RS2	E
G19429	AC	911	5760.00	A CW	\$366,739	\$144,000	\$144,000	NA	2	12 1/2% RS2	E
G19430	AC	912	5760.00	A CW	\$222,700	\$144,000	\$144,000	NA	2	12 1/2% RS2	E
G19431	AC	914	5760.00	A CW	\$227,800	\$144,000	\$144,000	NA	1	12 1/2% RS2	E
G19432	AC	915	5760.00	A CW	\$158,600	\$144,000	\$144,000	NA	1	12 1/2% RS2	E
G19433	AC	944	5337.23	A CW	\$2,770,560	\$133,431	\$133,431	NA	1	12 1/2% RS2	E
G19434	AC	946	5540.84	A CW	\$2,793,000	\$138,521	\$138,521	NA	4	12 1/2% RS2	E
G19435	AC	950	5760.00	A CW	\$1,377,731	\$144,000	\$144,000	NA	3	12 1/2% RS2	E
G19436	AC	952	5760.00	A CW	\$157,305	\$144,000	\$144,000	NA	1	12 1/2% RS2	E
G19437	AC	953	5760.00	A CW	\$227,800	\$144,000	\$144,000	NA	1	12 1/2% RS2	E
G19438	AC	955	5760.00	A CW	\$783,981	\$144,000	\$144,000	NA	2	12 1/2% RS2	E
G19439	AC	956	5760.00	A CW	\$158,600	\$144,000	\$144,000	NA	1	12 1/2% RS2	E
G19440	AC	957	5760.00	A CW	\$152,600	\$144,000	\$144,000	NA	1	12 1/2% RS2	E
G19441	AC	958	5760.00	A CW	\$322,600	\$144,000	\$144,000	NA	1	12 1/2% RS2	E
G19442	AC	994	188.03	A CW	\$44,431	\$4,701	\$4,701	NA	1	12 1/2% RS2	E
G19443	AC	995	289.83	A CW	\$7,916	\$7,246	\$7,246	NA	1	12 1/2% RS2	E
G19444	AC	997	493.41	A CW	\$13,464	\$144,000	\$144,000	NA	2	12 1/2% RS2	E
G19445	AC	998	595.19	A CW	\$78,307	\$14,880	\$14,880	NA	2	12 1/2% RS2	E
G19446	AC	999	696.98	A CW	\$27,726	\$17,425	\$17,425	NA	2	12 1/2% RS2	E
G19447	AC	1000	798.76	A CW	\$20,800	\$19,969	\$19,969	NA	1	12 1/2% RS2	E
G19448	AC	1001	900.54	A CW	\$23,400	\$22,514	\$22,514	NA	1	12 1/2% RS2	E
G19449	AC	1002	1002.32	A CW	\$26,050	\$25,058	\$25,058	NA	1	12 1/2% RS2	E
G19450	KC	1	5760.00	A CW	\$176,776	\$144,000	\$144,000	NA	1	12 1/2% RS2	E
G19451	KC	3	5760.00	A CW	\$632,589	\$144,000	\$144,000	NA	2	12 1/2% RS2	E
G19452	KC	4	5760.00	A CW	\$331,833	\$144,000	\$144,000	NA	2	12 1/2% RS2	E
G19453	KC	5	5760.00	A CW	\$439,258	\$144,000	\$144,000	NA	1	12 1/2% RS2	E

PHASE 2 DECISION INFORMATION MATRIX

Sale Number: 168

Page 22 of 29

Region Name: Gulf of Mexico OCS Region

Sale Identifier: WESTERN GULF OF MEXICO

Sale Date: AUGUST 27, 1997

OCS NUMBER	AREA CODE/ PROT NO	BLOCK NO.	ACRES/ HECTARES	TRACT TYPE	HIGH BID	MROV	ADV	RAM	ADJ #BIDS	ROYALTY RATE	TRACT DEC. RULE
G19454	KC	27	5760.00	A CW	\$1,806,817	\$144,000	\$144,000	NA	1	12 1/2% RS2	E
G19455	KC	28	5760.00	A CW	\$1,406,817	\$380,000	\$380,000	NA	3	12 1/2% RS2	C
G19456	KC	29	5760.00	A CW	\$3,375,840	\$144,000	\$144,000	NA	3	12 1/2% RS2	C
G19457	KC	30	5760.00	A CW	\$836,817	\$144,000	\$144,000	NA	1	12 1/2% RS2	E
G19458	KC	31	5760.00	A CW	\$1,178,000	\$144,000	\$144,000	NA	2	12 1/2% RS2	E
G19459	KC	32	5760.00	A CW	\$633,000	\$144,000	\$144,000	NA	1	12 1/2% RS2	E
G19460	KC	33	5760.00	A CW	\$333,000	\$144,000	\$144,000	NA	1	12 1/2% RS2	E
G19461	KC	34	5760.00	A CW	\$733,000	\$144,000	\$144,000	NA	1	12 1/2% RS2	E
G19462	KC	35	5760.00	A CW	\$466,817	\$144,000	\$144,000	NA	1	12 1/2% RS2	E
G19463	KC	40	5760.00	A CW	\$306,100	\$144,000	\$144,000	NA	1	12 1/2% RS2	E
G19464	KC	41	5760.00	A CW	\$361,000	\$144,000	\$144,000	NA	2	12 1/2% RS2	E
G19465	KC	45	5760.00	A CW	\$275,776	\$144,000	\$144,000	NA	1	12 1/2% RS2	E
G19466	KC	48	5760.00	A CW	\$211,968	\$144,000	\$144,000	NA	1	12 1/2% RS2	E
G19467	KC	52	5760.00	A CW	\$147,778	\$144,000	\$144,000	NA	1	12 1/2% RS2	E
G19468	KC	58	5760.00	A CW	\$157,305	\$144,000	\$144,000	NA	1	12 1/2% RS2	E
G19469	KC	71	5760.00	A CW	\$193,527	\$144,000	\$144,000	NA	1	12 1/2% RS2	E
G19470	KC	72	5760.00	A CW	\$232,600	\$144,000	\$144,000	NA	2	12 1/2% RS2	E
G19471	KC	73	5760.00	A CW	\$428,600	\$144,000	\$144,000	NA	2	12 1/2% RS2	E
G19472	KC	74	5760.00	A CW	\$1,166,817	\$144,000	\$144,000	NA	2	12 1/2% RS2	E
G19473	KC	75	5760.00	A CW	\$493,527	\$144,000	\$144,000	NA	2	12 1/2% RS2	E
G19474	KC	80	5760.00	A CW	\$193,527	\$144,000	\$144,000	NA	1	12 1/2% RS2	E
G19475	KC	81	5760.00	A CW	\$406,817	\$144,000	\$144,000	NA	1	12 1/2% RS2	E
G19476	KC	83	5760.00	A CW	\$786,240	\$144,000	\$144,000	NA	2	12 1/2% RS2	E
G19477	KC	90	5760.00	A CW	\$326,776	\$144,000	\$144,000	NA	1	12 1/2% RS2	E
G19478	KC	91	5760.00	A CW	\$157,305	\$144,000	\$144,000	NA	1	12 1/2% RS2	E
G19479	KC	94	5760.00	A CW	\$331,833	\$144,000	\$144,000	NA	1	12 1/2% RS2	E

PHASE 2 DECISION INFORMATION MATRIX

Sale Number: 168

Page 23 of 29

Region Name: Gulf of Mexico OCS Region

Sale Identifier: WESTERN GULF OF MEXICO

Sale Date: AUGUST 27, 1997

OCS NUMBER	AREA CODE/ PROT NO	BLOCK NO.	ACRES/ HECTARES	TRACT TYPE	HIGH BID	MROV	ADV	RAM	ADJ #BIDS	ROYALTY RATE	TRACT DEC. RULE
R G19480	KC	95	5760.00	A CW	\$326,776	\$1,400,000	\$1,400,000	\$534,434	3	12 1/2% RS2	R
R G19481	KC	96	5760.00	A CW	\$398,571	\$2,400,000	\$2,400,000	\$693,692	4	12 1/2% RS2	R
R G19483	KC	111	5760.00	A CW	\$196,982	\$1,600,000	\$1,600,000	\$663,503	2	12 1/2% RS2	R
G19484	KC	112	5760.00	A CW	\$825,260	\$144,000	\$144,000	NA	6	12 1/2% RS2	E
G19485	KC	115	5760.00	A CW	\$406,817	\$144,000	\$144,000	NA	1	12 1/2% RS2	E
G19486	KC	116	5760.00	A CW	\$193,527	\$144,000	\$144,000	NA	1	12 1/2% RS2	E
G19487	KC	118	5760.00	A CW	\$1,631,530	\$144,000	\$144,000	NA	2	12 1/2% RS2	E
G19488	KC	119	5760.00	A CW	\$1,687,945	\$144,000	\$144,000	NA	2	12 1/2% RS2	E
G19489	KC	120	5760.00	A CW	\$378,402	\$144,000	\$144,000	NA	2	12 1/2% RS2	E
G19490	KC	121	5760.00	A CW	\$543,812	\$144,000	\$144,000	NA	1	12 1/2% RS2	E
G19491	KC	125	5760.00	A CW	\$476,817	\$144,000	\$144,000	NA	1	12 1/2% RS2	E
G19492	KC	126	5760.00	A CW	\$193,527	\$144,000	\$144,000	NA	1	12 1/2% RS2	E
G19493	KC	137	5760.00	A CW	\$184,880	\$144,000	\$144,000	NA	1	12 1/2% RS2	E
G19494	KC	138	5760.00	A CW	\$157,305	\$144,000	\$144,000	NA	1	12 1/2% RS2	E
G19495	KC	140	5760.00	A CW	\$157,305	\$144,000	\$144,000	NA	1	12 1/2% RS2	E
G19496	KC	141	5760.00	A CW	\$157,305	\$144,000	\$144,000	NA	1	12 1/2% RS2	E
G19497	KC	146	5760.00	A CW	\$1,797,000	\$144,000	\$144,000	NA	1	12 1/2% RS2	E
G19498	KC	153	5760.00	A CW	\$226,640	\$144,000	\$144,000	NA	1	12 1/2% RS2	E
G19499	KC	154	5760.00	A CW	\$2,911,894	\$144,000	\$144,000	NA	4	12 1/2% RS2	E
G19500	KC	155	5760.00	A CW	\$883,000	\$144,000	\$144,000	NA	4	12 1/2% RS2	E
G19501	KC	156	5760.00	A CW	\$4,427,136	\$2,800,000	\$2,800,000	NA	8	12 1/2% RS2	C
G19503	KC	162	5760.00	A CW	\$153,960	\$144,000	\$144,000	NA	1	12 1/2% RS2	E
G19504	KC	163	5760.00	A CW	\$1,264,305	\$144,000	\$144,000	NA	2	12 1/2% RS2	E
G19506	KC	165	5760.00	A CW	\$2,882,551	\$144,000	\$144,000	NA	4	12 1/2% RS2	C
G19508	KC	167	5760.00	A CW	\$275,776	\$144,000	\$144,000	NA	2	12 1/2% RS2	E
G19509	KC	169	5760.00	A CW	\$456,817	\$144,000	\$144,000	NA	1	12 1/2% RS2	E

R DENOTES TRACT WITH REJECTED HIGH BID

PHASE 2 DECISION INFORMATION MATRIX

Sale Number: 168

Page 24 of 29

Region Name: Gulf of Mexico OCS Region

Sale Identifier: WESTERN GULF OF MEXICO

Sale Date: AUGUST 27, 1997

OCS NUMBER	AREA CODE/ PROT NO	BLOCK NO.	ACRES/ HECTARES	TRACT TYPE	HIGH BID	MROV	ADV	RAM	ADJ #BIDS	ROYALTY RATE	TRACT DEC. RULE
G19510	KC	170	5760.00	A CW	\$333,000	\$144,000	\$144,000	NA	2	12 1/2% RS2	E
G19511	KC	171	5760.00	A CW	\$1,023,552	\$144,000	\$144,000	NA	3	12 1/2% RS2	E
G19512	KC	172	5760.00	A CW	\$152,640	\$144,000	\$144,000	NA	1	12 1/2% RS2	E
G19513	KC	189	5760.00	A CW	\$841,000	\$144,000	\$144,000	NA	1	12 1/2% RS2	E
G19514	KC	190	5760.00	A CW	\$1,132,000	\$144,000	\$144,000	NA	1	12 1/2% RS2	E
G19515	KC	197	5760.00	A CW	\$356,817	\$144,000	\$144,000	NA	1	12 1/2% RS2	E
G19516	KC	198	5760.00	A CW	\$906,817	\$144,000	\$144,000	NA	3	12 1/2% RS2	E
G19517	KC	199	5760.00	A CW	\$3,023,000	\$2,700,000	\$2,700,000	NA	7	12 1/2% RS2	C
G19519	KC	206	5760.00	A CW	\$406,817	\$144,000	\$144,000	NA	2	12 1/2% RS2	E
G19520	KC	207	5760.00	A CW	\$327,835	\$144,000	\$144,000	NA	2	12 1/2% RS2	E
G19521	KC	209	5760.00	A CW	\$334,080	\$144,000	\$144,000	NA	2	12 1/2% RS2	E
G19522	KC	210	5760.00	A CW	\$633,000	\$144,000	\$144,000	NA	3	12 1/2% RS2	C
G19523	KC	211	5760.00	A CW	\$233,000	\$144,000	\$144,000	NA	1	12 1/2% RS2	E
G19524	KC	214	5760.00	A CW	\$193,527	\$144,000	\$144,000	NA	1	12 1/2% RS2	E
G19525	KC	215	5760.00	A CW	\$409,190	\$144,000	\$144,000	NA	1	12 1/2% RS2	E
G19526	KC	216	5760.00	A CW	\$808,704	\$144,000	\$144,000	NA	1	12 1/2% RS2	E
G19527	KC	241	5760.00	A CW	\$177,000	\$144,000	\$144,000	NA	1	12 1/2% RS2	E
G19528	KC	242	5760.00	A CW	\$506,817	\$144,000	\$144,000	NA	3	12 1/2% RS2	C
G19529	KC	243	5760.00	A CW	\$906,817	\$144,000	\$144,000	NA	2	12 1/2% RS2	E
G19530	KC	244	5760.00	A CW	\$506,817	\$144,000	\$144,000	NA	2	12 1/2% RS2	E
G19531	KC	245	5760.00	A CW	\$786,817	\$144,000	\$144,000	NA	1	12 1/2% RS2	E
G19532	KC	252	5760.00	A CW	\$266,000	\$144,000	\$144,000	NA	1	12 1/2% RS2	E
G19533	KC	253	5760.00	A CW	\$333,000	\$144,000	\$144,000	NA	2	12 1/2% RS2	E
G19534	KC	254	5760.00	A CW	\$633,000	\$144,000	\$144,000	NA	1	12 1/2% RS2	C
R G19535	KC	255	5760.00	A CW	\$244,000	\$1,300,000	\$1,300,000	NA	1	12 1/2% RS2	R
G19536	KC	258	5760.00	A CW	\$306,817	\$144,000	\$144,000	NA	1	12 1/2% RS2	E

R DENOTES TRACT WITH REJECTED HIGH BID

PHASE 2 DECISION INFORMATION MATRIX

Sale Number: 168

Page 25 of 29

Region Name: Gulf of Mexico OCS Region

Sale Identifier: WESTERN GULF OF MEXICO

Sale Date: AUGUST 27, 1997

OCs NUMBER	AREA CODE/ PROT NO	BLOCK NO.	ACRES/ HECTARES	TRACT TYPE	HIGH BID	MROV	ADV	RAM	ADJ #BIDS	ROYALTY RATE	TRACT DEC. RULE
G19537	KC	259	5760.00	A CW	\$193,527	\$144,000	\$144,000	NA	1	12 1/2% RS2	E
G19538	KC	270	5760.00	A CW	\$157,305	\$144,000	\$144,000	NA	1	12 1/2% RS2	E
G19539	KC	284	5760.00	A CW	\$475,200	\$144,000	\$144,000	NA	1	12 1/2% RS2	E
G19540	KC	285	5760.00	A CW	\$475,200	\$144,000	\$144,000	NA	1	12 1/2% RS2	E
G19541	KC	287	5760.00	A CW	\$4,063,000	\$144,000	\$144,000	NA	2	12 1/2% RS2	E
G19542	KC	288	5760.00	A CW	\$306,817	\$144,000	\$144,000	NA	1	12 1/2% RS2	E
G19543	KC	289	5760.00	A CW	\$306,817	\$144,000	\$144,000	NA	1	12 1/2% RS2	E
G19544	KC	290	5760.00	A CW	\$393,527	\$144,000	\$144,000	NA	1	12 1/2% RS2	E
G19545	KC	291	5760.00	A CW	\$193,527	\$144,000	\$144,000	NA	1	12 1/2% RS2	E
G19546	KC	303	5760.00	A CW	\$193,527	\$144,000	\$144,000	NA	1	12 1/2% RS2	E
G19547	KC	309	5760.00	A CW	\$157,305	\$144,000	\$144,000	NA	1	12 1/2% RS2	E
G19548	KC	310	5760.00	A CW	\$157,305	\$144,000	\$144,000	NA	1	12 1/2% RS2	E
G19549	KC	313	5760.00	A CW	\$158,600	\$144,000	\$144,000	NA	1	12 1/2% RS2	E
G19550	KC	314	5760.00	A CW	\$158,600	\$144,000	\$144,000	NA	1	12 1/2% RS2	E
G19551	KC	328	5760.00	A CW	\$475,200	\$144,000	\$144,000	NA	1	12 1/2% RS2	E
G19552	KC	329	5760.00	A CW	\$838,080	\$144,000	\$144,000	NA	2	12 1/2% RS2	E
G19553	KC	332	5760.00	A CW	\$193,527	\$144,000	\$144,000	NA	1	12 1/2% RS2	E
G19554	KC	333	5760.00	A CW	\$256,817	\$144,000	\$144,000	NA	1	12 1/2% RS2	E
G19555	KC	336	5760.00	A CW	\$193,527	\$144,000	\$144,000	NA	1	12 1/2% RS2	E
G19556	KC	345	5760.00	A CW	\$273,000	\$144,000	\$144,000	NA	1	12 1/2% RS2	E
G19557	KC	356	5760.00	A CW	\$158,600	\$144,000	\$144,000	NA	2	12 1/2% RS2	E
G19558	KC	357	5760.00	A CW	\$158,600	\$144,000	\$144,000	NA	2	12 1/2% RS2	E
G19559	KC	358	5760.00	A CW	\$331,833	\$144,000	\$144,000	NA	2	12 1/2% RS2	E
G19560	KC	359	5760.00	A CW	\$157,305	\$144,000	\$144,000	NA	1	12 1/2% RS2	E
G19561	KC	365	5760.00	A CW	\$226,776	\$144,000	\$144,000	NA	1	12 1/2% RS2	E
G19562	KC	366	5760.00	A CW	\$1,107,776	\$144,000	\$144,000	NA	1	12 1/2% RS2	E

PHASE 2 DECISION INFORMATION MATRIX

Sale Number: 168

Page 26 of 29

Region Name: Gulf of Mexico OCS Region

Sale Identifier: WESTERN GULF OF MEXICO

Sale Date: AUGUST 27, 1997

OCS NUMBER	AREA CODE/ PROT NO	BLOCK NO.	ACRES/ HECTARES	TRACT TYPE	HIGH BID	MROV	ADV	RAM	ADJ #BIDS	ROYALTY RATE	TRACT DEC. RULE
G19563	KC	378	5760.00	A CW	\$306,817	\$144,000	\$144,000	NA	1	12 1/2% RS2	E
G19564	KC	390	5760.00	A CW	\$273,000	\$144,000	\$144,000	NA	1	12 1/2% RS2	E
G19565	KC	397	5760.00	A CW	\$222,600	\$144,000	\$144,000	NA	1	12 1/2% RS2	E
G19566	KC	400	5760.00	A CW	\$331,833	\$144,000	\$144,000	NA	1	12 1/2% RS2	E
G19567	KC	409	5760.00	A CW	\$376,776	\$144,000	\$144,000	NA	1	12 1/2% RS2	E
G19568	KC	432	5760.00	A CW	\$273,000	\$144,000	\$144,000	NA	1	12 1/2% RS2	E
G19569	KC	441	5760.00	A CW	\$222,600	\$144,000	\$144,000	NA	1	12 1/2% RS2	E
G19570	KC	455	5760.00	A CW	\$226,776	\$144,000	\$144,000	NA	1	12 1/2% RS2	E
G19571	KC	457	5760.00	A CW	\$157,305	\$144,000	\$144,000	NA	1	12 1/2% RS2	E
G19572	KC	464	5760.00	A CW	\$147,600	\$144,000	\$144,000	NA	1	12 1/2% RS2	E
G19573	KC	466	5760.00	A CW	\$556,435	\$144,000	\$144,000	NA	1	12 1/2% RS2	E
G19574	KC	468	5760.00	A CW	\$147,600	\$144,000	\$144,000	NA	1	12 1/2% RS2	E
G19575	KC	469	5760.00	A CW	\$321,300	\$144,000	\$144,000	NA	1	12 1/2% RS2	E
G19576	KC	473	5760.00	A CW	\$577,000	\$144,000	\$144,000	NA	1	12 1/2% RS2	E
G19577	KC	485	5760.00	A CW	\$152,300	\$144,000	\$144,000	NA	1	12 1/2% RS2	E
G19578	KC	486	5760.00	A CW	\$1,560,960	\$144,000	\$144,000	NA	3	12 1/2% RS2	E
G19579	KC	487	5760.00	A CW	\$819,845	\$144,000	\$144,000	NA	1	12 1/2% RS2	E
G19580	KC	488	5760.00	A CW	\$570,240	\$144,000	\$144,000	NA	1	12 1/2% RS2	E
G19581	KC	489	5760.00	A CW	\$570,240	\$144,000	\$144,000	NA	1	12 1/2% RS2	E
G19582	KC	490	5760.00	A CW	\$2,741,760	\$144,000	\$144,000	NA	1	12 1/2% RS2	E
G19583	KC	505	5760.00	A CW	\$2,257,920	\$144,000	\$144,000	NA	1	12 1/2% RS2	E
G19584	KC	513	5760.00	A CW	\$321,300	\$144,000	\$144,000	NA	2	12 1/2% RS2	E
G19585	KC	517	5760.00	A CW	\$2,188,000	\$144,000	\$144,000	NA	1	12 1/2% RS2	E
G19586	KC	530	5760.00	A CW	\$1,560,960	\$144,000	\$144,000	NA	3	12 1/2% RS2	E
G19587	KC	531	5760.00	A CW	\$1,560,960	\$144,000	\$144,000	NA	4	12 1/2% RS2	E
G19588	KC	549	5760.00	A CW	\$2,257,920	\$144,000	\$144,000	NA	1	12 1/2% RS2	E

PHASE 2 DECISION INFORMATION MATRIX

Sale Number: 168

Page 27 of 29

Region Name: Gulf of Mexico OCS Region

Sale Identifier: WESTERN GULF OF MEXICO

Sale Date: AUGUST 27, 1997

OCS NUMBER	AREA CODE/ PROT NO	BLOCK NO.	ACRES/ HECTARES	TRACT TYPE	HIGH BID	MROV	ADV	RAM	ADJ #BIDS	ROYALTY RATE	TRACT DEC. RULE
G19590	KC	552	5760.00	A CW	\$476,776	\$144,000	\$144,000	NA	3	12 1/2% RS2	E
G19591	KC	557	5760.00	A CW	\$259,000	\$144,000	\$144,000	NA	2	12 1/2% RS2	E
G19592	KC	576	5760.00	A CW	\$312,845	\$144,000	\$144,000	NA	1	12 1/2% RS2	E
G19593	KC	577	5760.00	A CW	\$436,845	\$144,000	\$144,000	NA	1	12 1/2% RS2	E
G19594	KC	578	5760.00	A CW	\$436,845	\$144,000	\$144,000	NA	1	12 1/2% RS2	E
G19595	KC	583	5760.00	A CW	\$768,096	\$144,000	\$144,000	NA	2	12 1/2% RS2	E
G19596	KC	584	5760.00	A CW	\$872,352	\$144,000	\$144,000	NA	2	12 1/2% RS2	E
G19597	KC	593	5760.00	A CW	\$1,756,800	\$144,000	\$144,000	NA	1	12 1/2% RS2	E
G19598	KC	594	5760.00	A CW	\$257,920	\$144,000	\$144,000	NA	1	12 1/2% RS2	E
G19599	KC	595	5760.00	A CW	\$1,464,660	\$144,000	\$144,000	NA	4	12 1/2% RS2	E
G19600	KC	596	5760.00	A CW	\$278,920	\$144,000	\$144,000	NA	1	12 1/2% RS2	E
G19601	KC	604	5760.00	A CW	\$1,019,000	\$144,000	\$144,000	NA	1	12 1/2% RS2	E
G19602	KC	605	5760.00	A CW	\$939,000	\$144,000	\$144,000	NA	1	12 1/2% RS2	E
G19603	KC	606	5760.00	A CW	\$152,845	\$144,000	\$144,000	NA	1	12 1/2% RS2	E
G19604	KC	609	5760.00	A CW	\$250,100	\$144,000	\$144,000	NA	1	12 1/2% RS2	E
G19605	KC	610	5760.00	A CW	\$797,000	\$144,000	\$144,000	NA	1	12 1/2% RS2	E
G19606	KC	611	5760.00	A CW	\$1,417,000	\$144,000	\$144,000	NA	1	12 1/2% RS2	E
G19607	KC	627	5760.00	A CW	\$326,776	\$144,000	\$144,000	NA	1	12 1/2% RS2	E
G19608	KC	638	5760.00	A CW	\$362,740	\$144,000	\$144,000	NA	1	12 1/2% RS2	E
G19609	KC	639	5760.00	A CW	\$1,767,800	\$144,000	\$144,000	NA	3	12 1/2% RS2	E
G19610	KC	647	5760.00	A CW	\$312,845	\$144,000	\$144,000	NA	1	12 1/2% RS2	E
G19611	KC	648	5760.00	A CW	\$846,000	\$144,000	\$144,000	NA	1	12 1/2% RS2	E
G19612	KC	652	5760.00	A CW	\$625,100	\$144,000	\$144,000	NA	1	12 1/2% RS2	E
G19613	KC	653	5760.00	A CW	\$625,100	\$144,000	\$144,000	NA	1	12 1/2% RS2	E
G19614	KC	654	5760.00	A CW	\$2,088,000	\$144,000	\$144,000	NA	1	12 1/2% RS2	E
G19615	KC	655	5760.00	A CW	\$2,487,000	\$144,000	\$144,000	NA	1	12 1/2% RS2	E

PHASE 2 DECISION INFORMATION MATRIX

Sale Number: 168

Page 28 of 29

Region Name: Gulf of Mexico OCS Region

Sale Identifier: WESTERN GULF OF MEXICO

Sale Date: AUGUST 27, 1997

OCS NUMBER	AREA CODE/ PROT NO	BLOCK NO.	ACRES/ HECTARES	TRACT TYPE	HIGH BID	MROV	ADV	RAM	ADJ #BIDS	ROYALTY RATE	TRACT DEC. RULE
G19616	KC	675	5760.00	A CW	\$213,000	\$144,000	\$144,000	NA	1	12 1/2% RS2	E
G19617	KC	676	5760.00	A CW	\$213,000	\$144,000	\$144,000	NA	1	12 1/2% RS2	E
G19618	KC	688	5760.00	A CW	\$282,845	\$144,000	\$144,000	NA	1	12 1/2% RS2	E
G19619	KC	689	5760.00	A CW	\$312,845	\$144,000	\$144,000	NA	1	12 1/2% RS2	E
G19620	KC	718	5760.00	A CW	\$243,000	\$144,000	\$144,000	NA	1	12 1/2% RS2	E
G19621	KC	719	5760.00	A CW	\$243,000	\$144,000	\$144,000	NA	1	12 1/2% RS2	E
G19622	KC	720	5760.00	A CW	\$577,728	\$144,000	\$144,000	NA	3	12 1/2% RS2	E
G19624	KC	732	5760.00	A CW	\$282,845	\$144,000	\$144,000	NA	1	12 1/2% RS2	E
G19625	KC	733	5760.00	A CW	\$1,396,280	\$144,000	\$144,000	NA	2	12 1/2% RS2	E
G19626	KC	734	5760.00	A CW	\$2,094,430	\$144,000	\$144,000	NA	1	12 1/2% RS2	E
G19627	KC	739	5760.00	A CW	\$152,845	\$144,000	\$144,000	NA	1	12 1/2% RS2	E
G19628	KC	754	5760.00	A CW	\$411,845	\$144,000	\$144,000	NA	3	12 1/2% RS2	E
G19629	KC	755	5760.00	A CW	\$411,845	\$144,000	\$144,000	NA	2	12 1/2% RS2	E
G19630	KC	793	5760.00	A CW	\$191,790	\$144,000	\$144,000	NA	1	12 1/2% RS2	E
G19631	KC	794	5760.00	A CW	\$161,700	\$144,000	\$144,000	NA	1	12 1/2% RS2	E
G19633	KC	799	5760.00	A CW	\$1,105,056	\$144,000	\$144,000	NA	4	12 1/2% RS2	E
G19634	KC	800	5760.00	A CW	\$177,120	\$144,000	\$144,000	NA	1	12 1/2% RS2	E
G19635	KC	825	5760.00	A CW	\$626,688	\$144,000	\$144,000	NA	1	12 1/2% RS2	E
G19636	KC	826	5760.00	A CW	\$1,741,824	\$144,000	\$144,000	NA	2	12 1/2% RS2	E
G19637	KC	827	5760.00	A CW	\$246,528	\$144,000	\$144,000	NA	1	12 1/2% RS2	E
R G19638	KC	837	5760.00	A CW	\$1,479,450	\$2,400,000	\$2,400,000	NA	1	12 1/2% RS2	R
G19639	KC	838	5760.00	A CW	\$859,600	\$144,000	\$144,000	NA	1	12 1/2% RS2	E
G19640	KC	839	5760.00	A CW	\$859,600	\$144,000	\$144,000	NA	1	12 1/2% RS2	E
G19641	KC	840	5760.00	A CW	\$191,790	\$144,000	\$144,000	NA	1	12 1/2% RS2	E
G19642	KC	841	5760.00	A CW	\$161,700	\$144,000	\$144,000	NA	1	12 1/2% RS2	E
G19643	KC	869	5760.00	A CW	\$289,152	\$144,000	\$144,000	NA	1	12 1/2% RS2	E

R DENOTES TRACT WITH REJECTED HIGH BID

PHASE 2 DECISION INFORMATION MATRIX

Sale Number: 168

Page 29 of 29

Region Name: Gulf of Mexico OCS Region

Sale Identifier: WESTERN GULF OF MEXICO

Sale Date: AUGUST 27, 1997

OCS NUMBER	AREA CODE/ PROT NO	BLOCK NO.	ACRES/ HECTARES	TRACT TYPE	HIGH BID	MROV	ADV	RAM	ADJ #BIDS	ROYALTY RATE	TRACT DEC. RULE
G19644	KC	870	5760.00	A CW	\$2,241,792	\$144,000	\$144,000	NA	2	12 1/2% RS2	E
G19645	KC	871	5760.00	A CW	\$182,016	\$144,000	\$144,000	NA	1	12 1/2% RS2	E
G19646	KC	881	5760.00	A CW	\$217,930	\$144,000	\$144,000	NA	1	12 1/2% RS2	E
G19647	KC	882	5760.00	A CW	\$161,700	\$144,000	\$144,000	NA	1	12 1/2% RS2	E
G19648	KC	883	5760.00	A CW	\$161,700	\$144,000	\$144,000	NA	1	12 1/2% RS2	E
G19649	KC	917	5760.00	A CW	\$176,776	\$144,000	\$144,000	NA	1	12 1/2% RS2	E
G19650	KC	918	5760.00	A CW	\$226,776	\$144,000	\$144,000	NA	1	12 1/2% RS2	E
G19651	KC	925	5760.00	A CW	\$161,700	\$144,000	\$144,000	NA	1	12 1/2% RS2	E
G19652	KC	961	5760.00	A CW	\$176,776	\$144,000	\$144,000	NA	1	12 1/2% RS2	E
G19653	KC	962	5760.00	A CW	\$176,776	\$144,000	\$144,000	NA	1	12 1/2% RS2	E