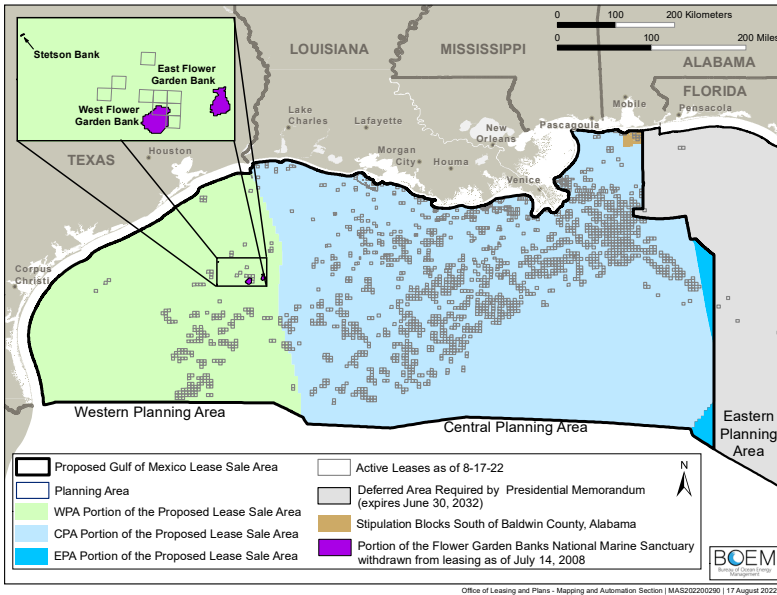


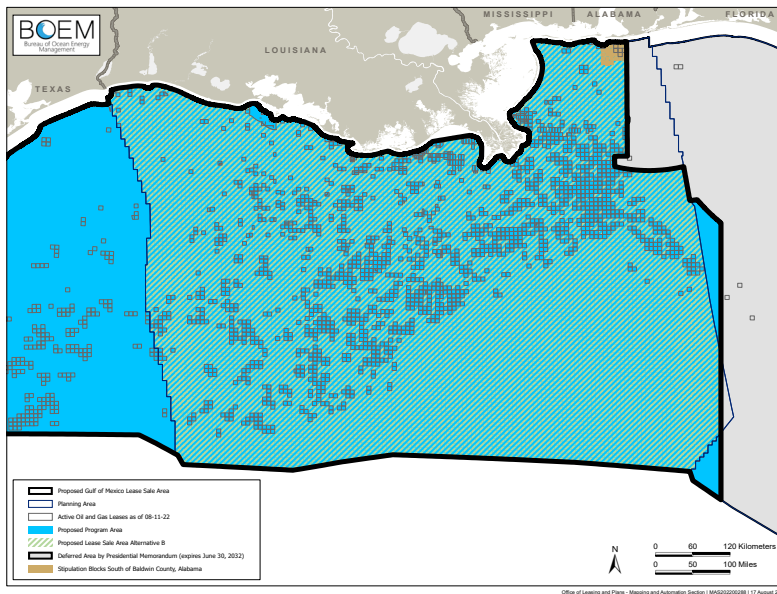
Alternative A



Alternative A would allow for a GOM lease sale encompassing the three GOM planning areas of the WPA, CPA, and EPA not currently under Presidential withdrawal, with the following exceptions:

1. whole and portions of blocks currently under Presidential withdrawal;
2. blocks that are adjacent to or beyond the United States' Exclusive Economic Zone; and
3. whole and partial blocks within the boundaries of the Flower Garden Banks National Marine Sanctuary as of the July 2008 Memorandum on Withdrawal of Certain Areas of U.S. OCS from Leasing Disposition.

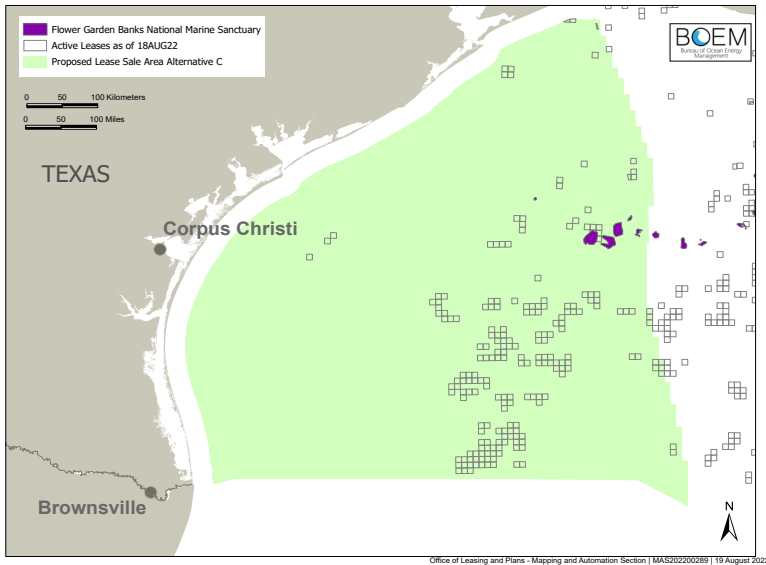
Alternative B



Alternative B would offer for lease all available unleased blocks within the CPA and EPA portions of the proposed lease sale area for oil and gas operations, with the following exceptions:

1. whole and portions of blocks currently under Presidential withdrawal; and
2. blocks that are adjacent to or beyond the United States' Exclusive Economic Zone.

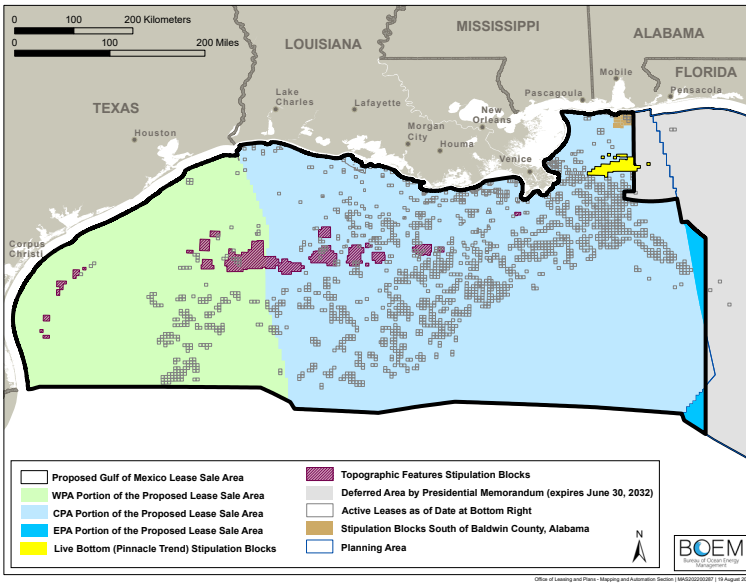
Alternative C



Alternative C would offer for lease all available unleased blocks within the WPA portions of the proposed lease sale area for oil and gas operations, with the following exceptions:

1. whole and partial blocks within the boundaries of the Flower Garden Banks National Marine Sanctuary as of the July 2008 Memorandum on Withdrawal of Certain Areas of U.S. OCS from Leasing Disposition.

Alternative D



Alternative D could exclude from leasing any available unleased whole or partial blocks that would otherwise have been subject to any one and/or a combination of the following stipulations:

1. Topographic Features Stipulation;
2. Live Bottom (Pinnacle Trend) Stipulation; and
3. Blocks South of Baldwin County, Alabama Stipulation (not applicable to Alternative C).

Alternative E the cancellation of a single GOM lease sale, which would require Congressional action.

1. Any potential environmental impacts resulting from a lease sale would not occur.
2. Activities related to previously issued leases and permits (as well as those that may be issued in the future under a separate lease sale decision) related to the OCS Oil and Gas Program would continue.



For More Information:

<https://www.boem.gov/GoM-Sales-259-and-261-SEIS>

BOEM.gov |  