

Visual Simulations of the Proposed Action

Key Observation Point M01

View south. 39.3 miles to nearest turbine, 14.9 miles to booster station. April 10, 2022, 3:50 p.m.



Photographic Simulations

Photo Location Map

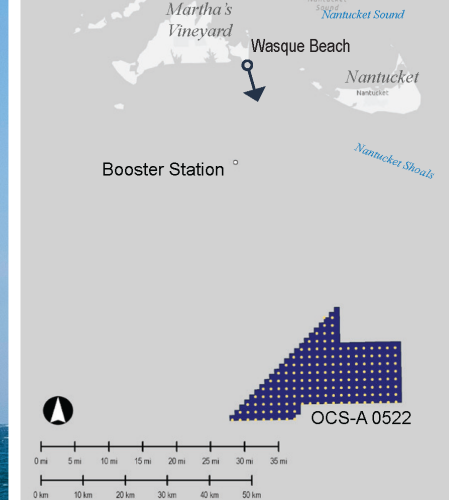


Photo Data

Date/Time:	10-Apr-2022 / 15:50
Light Conditions:	Side Light
Camera:	Canon 6D Mark II
Focal Length:	50mm (full frame)

Photo Location

Latitude:	41° 21' 05.1124" N
Longitude:	70° 27' 17.7010" W
Elevation (+/-):	7.3 m (24 ft)
Nearest Turbine:	63.2 km (39.3 mi)
Farthest Turbine:	88.0 km (54.7 mi)
Horiz. Field-of-View:	29.3°
Booster Station Dist.:	24.0 km (14.9 mi)

Visible Portion of Closest WTG

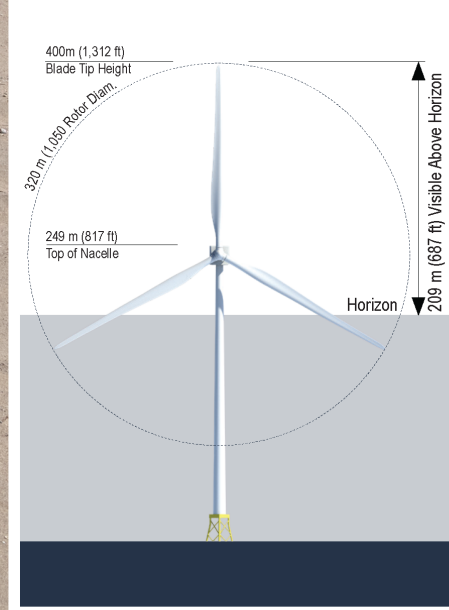


Figure D-4b
M01: Wasque Beach
Town of Edgartown, Chappaquiddick Island, MA

SIMULATED VIEW - WTG & BOOSTER STATION

The above photograph is intended to be viewed 20 inches from the reader's eye when printed on 11"x17" paper and 13 inches from the reader's eye when printed on 8 1/2" x 11" paper. Viewing on an uncalibrated video monitor can alter intended lightness, color and/or contrast of the image.



Key Observation Point M06

View southeast. 45.0 miles to nearest turbine, 19.1 miles to booster station. May 6, 2022, 9:40 a.m.



Photographic Simulations

Photo Location Map

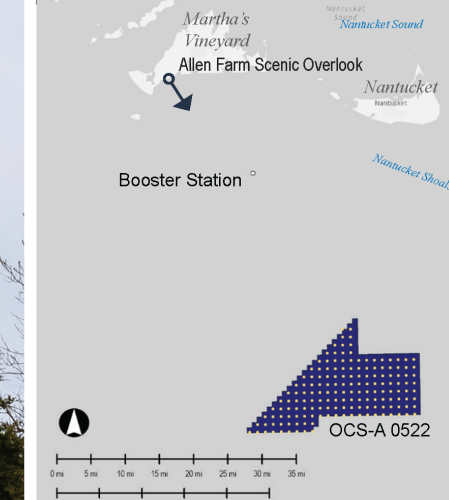


Photo Data

Date/Time:	06-May-2022 / 09:40
Light Conditions:	Side Light
Camera:	Canon 6D Mark II
Focal Length:	50mm (full frame)

Photo Location

Latitude:	41° 20' 30.2027" N
Longitude:	70° 43' 47.7156" W
Elevation (+/-):	14.3 m (47 ft)
Nearest Turbine:	72.4 km (45.0 mi)
Farthest Turbine:	98.7 km (61.3 mi)
Horiz. Field-of-View:	28.0°
Booster Station Dist.:	30.7 km (19.1 mi)

Visible Portion of Closest WTG

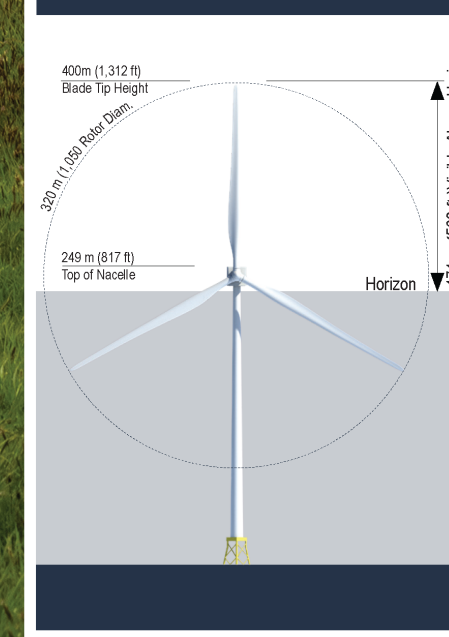


Figure D-2b
M06: Allen Farm Scenic Overlook
Town of Chillmark, Martha's Vineyard, MA

SIMULATED VIEW - WTG & BOOSTER STATION

The above photograph is intended to be viewed 20 inches from the reader's eye when printed on 11"x17" paper and 13 inches from the reader's eye when printed on 8 1/2" x 11" paper. Viewing on an uncalibrated video monitor can alter intended lightness, color and/or contrast of the image.

