



OSC Scientific Committee Meeting May 2013

Michelle K. Nannen

Benthic Ecologist

Gulf of Mexico Region

504-731-6682

michelle.nannen@boem.gov



Page #	Break-out	Title	Rank
39	BIO	Long-Term Monitoring at the East and West Flower Garden Banks -2014-2017	8
<p>**PO = Physical Oceanography FE = Fate & Effect BIO = Biology PS = Protected Species SE = Social & Economic OT = Other</p>			



BOEM Information Need:

- **Continuation of long term monitoring at FGB**
- **Monitor impacts of natural and offshore oil and gas activity on the FGB**
- **Reduction in sampling frequency**

Date Information is Required:

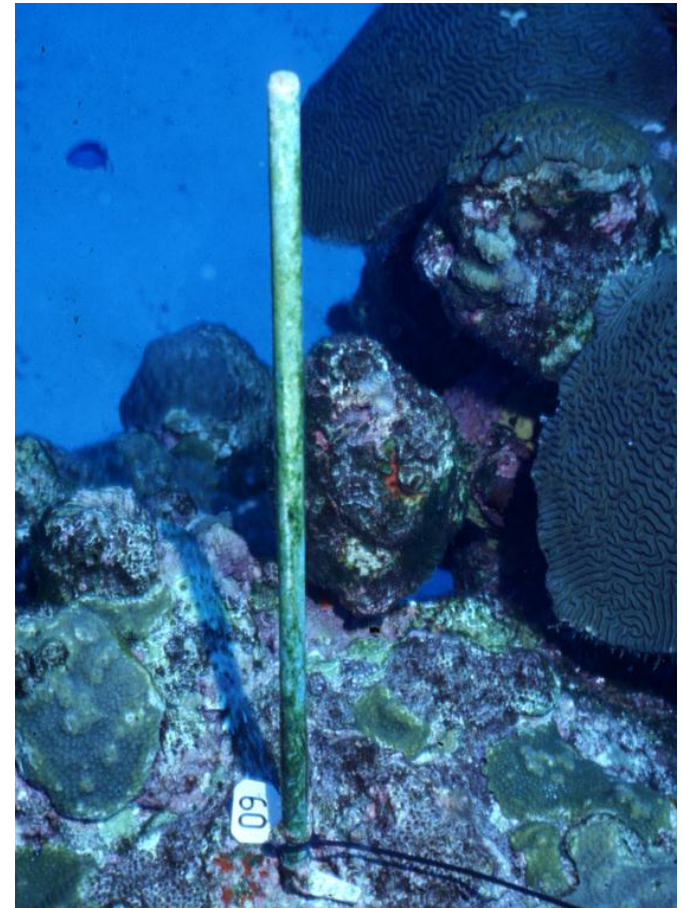
- **Monitoring 2014-1017**



Background:

A) Relationship with Previous Work/Efforts

- Continuation of the Long Term Monitoring Program at FGB (1972/1988)
- Reduction in sampling frequency (every other year)
 - Activity has moved farther offshore
 - Over 25 years of data at FGB
 - FGB stable with no significant changes since monitoring began



Tentative Ranking: 8

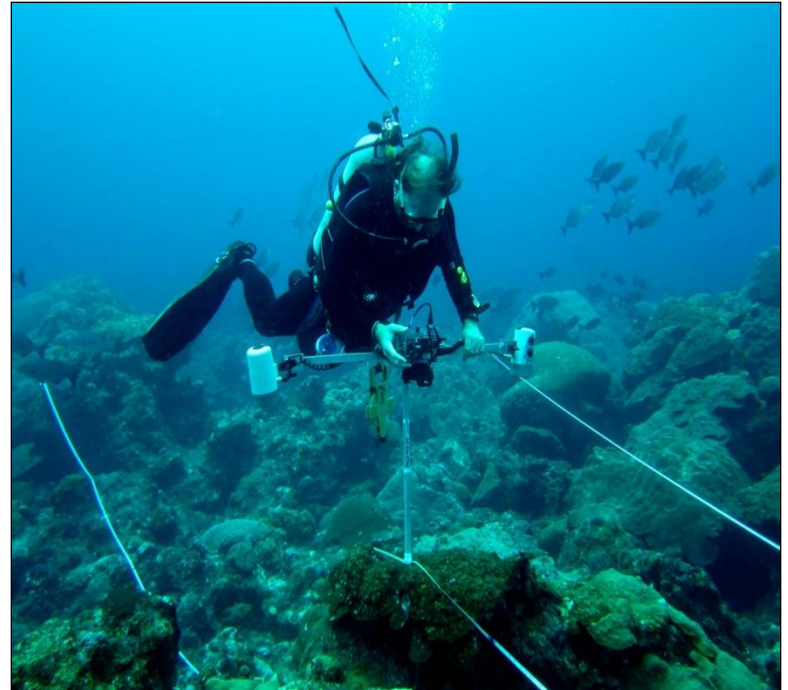
Background:

B) Relationship with Concurrent/Future Efforts

- **Supplement data with “Coral Reef Ocean Acidification Sentinel Site in the Flower Garden Banks National Marine Sanctuary” study profile**
- **Data collected will supplement “Workshop on Developing New, Leveraged Approach to Long-Term Monitoring in the Gulf of Mexico Using Stations” profile**

Study's Objectives:

- **Continue the long term monitoring at the Flower Garden Banks**
- **Detect chronic effects from natural and anthropogenic activities**
- **50/50 cost sharing with the FGBNMS**



Study's Methods:

- **Random transect photo analysis**
- **Repetitive quadrat photo analysis**
- **Lateral growth photo analysis**
- **Vertical growth measurement**
- **Fish surveys**
- **Lobster & urchin surveys**
- **General health & change**
- **Water quality**



Addition *Pertinent* Information

- 2014 & 2016 – collect data
- 2015 & 2017 – submit reports
- Budget = \$300,000 – about half of current budget