

## MMS Information Transfer Meeting

Gulf-Coast Post Katrina/Rita Sand Resources

# **Evaluation of the Sand and Gravel Resources Suitable for Post-Katrina Restoration, Mississippi-Alabama Shelf**

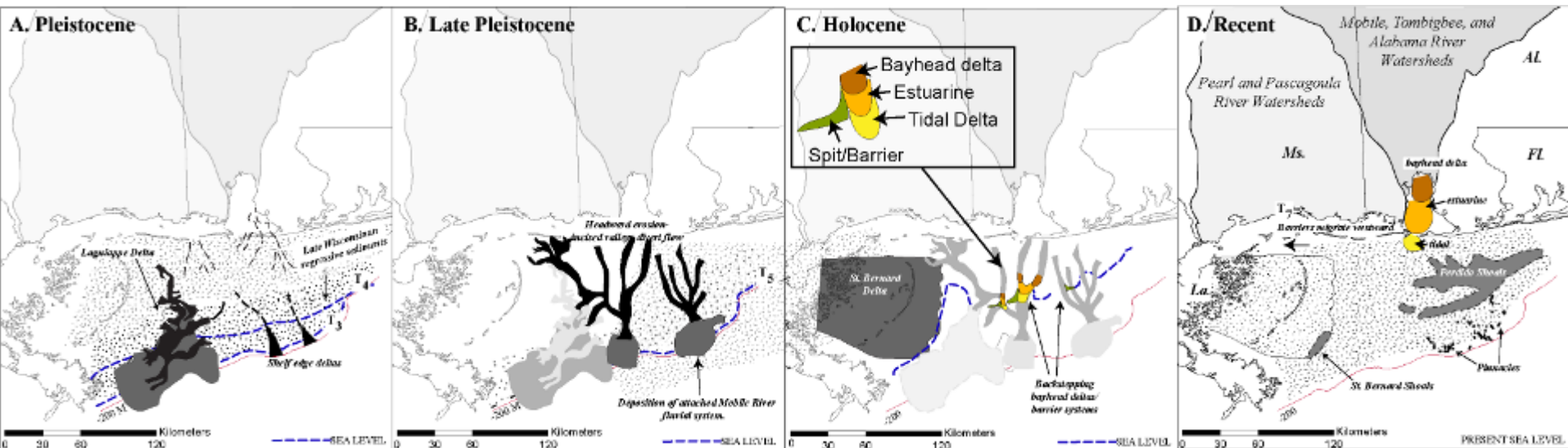
**USGS Primary: James Flocks**

[jflocks@usgs.gov](mailto:jflocks@usgs.gov)

# Presentation Outline

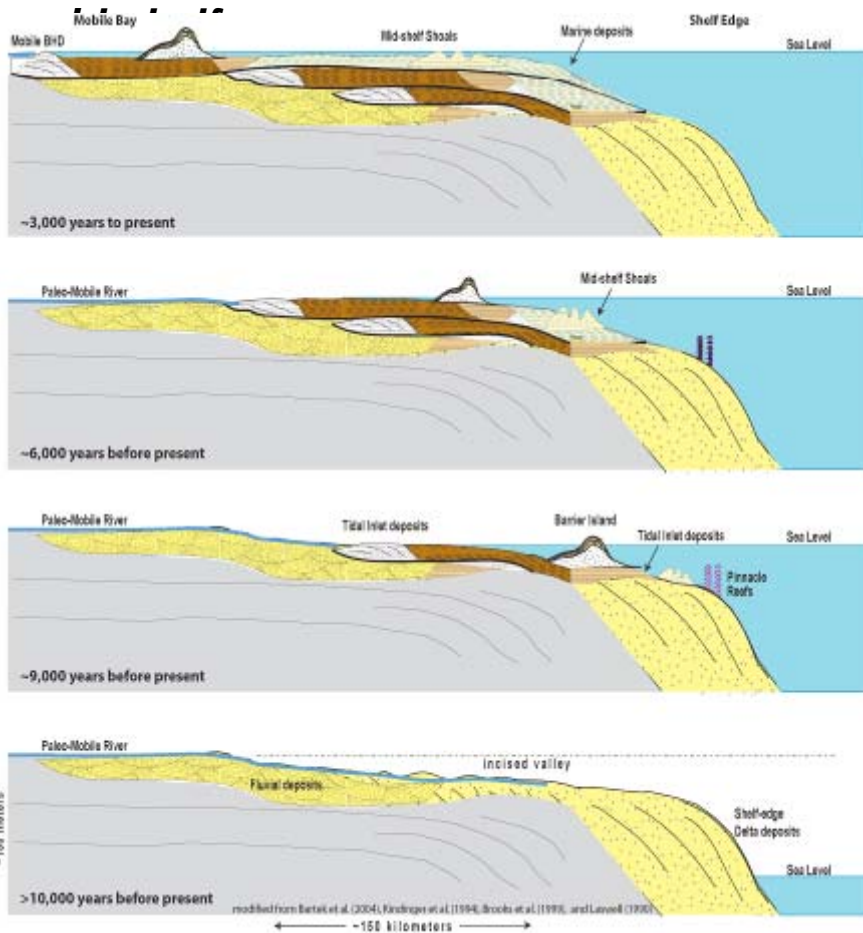
- ◆ Geologic history of the Louisiana-Mississippi-Alabama (LMA) Shelf
- ◆ USGS recent efforts on the LMA Shelf
  - ◆ Data archive
  - ◆ Seafloor/sub-bottom surveys
- ◆ Areas of interest (St. Bernard Shoals)

# Late Pleistocene to Recent Geologic History, LMA Shelf

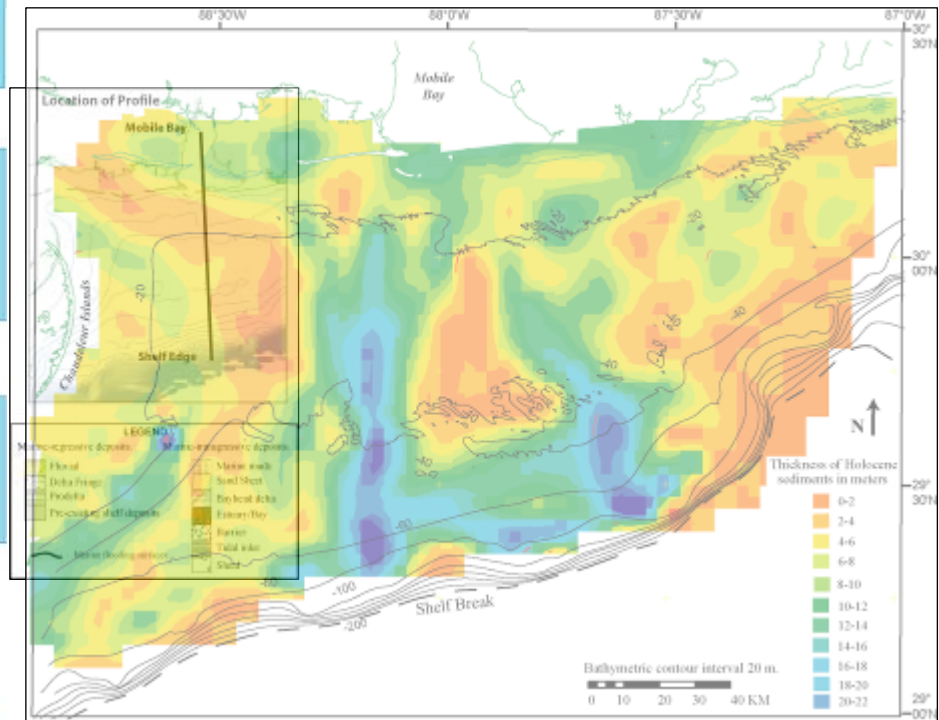


# Sediment Distribution and Thickness

*Development of Holocene tidal/barrier/estuarine sequences,*

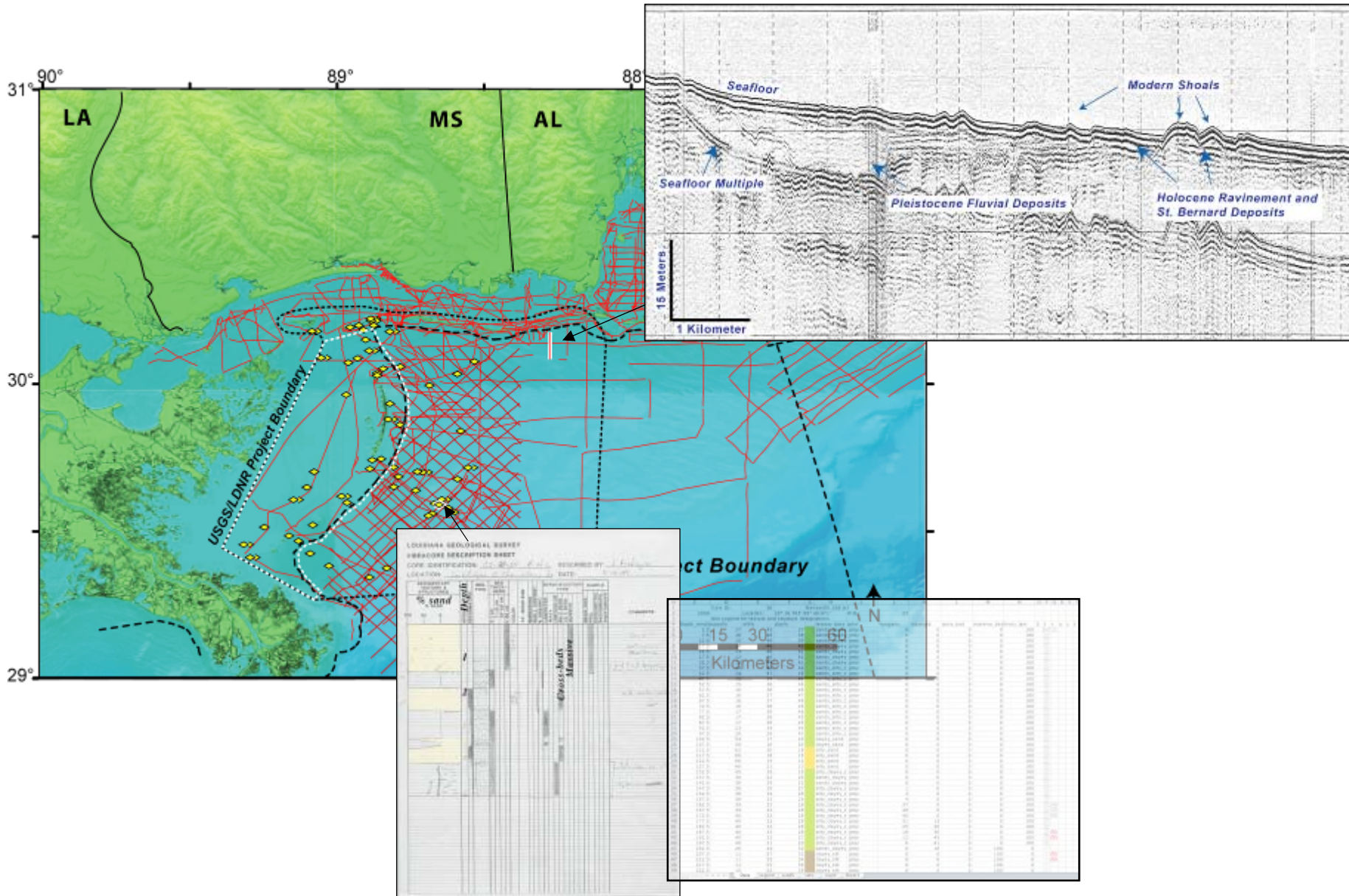


*Thickness of Holocene sediments*



modified from Bertek et al. (2004), Rodriguez et al. (1994), Brooks et al. (1995), and Laveen (1990)

# Available Geologic Data, LMA Shelf



# 2006–2009 Research Areas, LMA Shelf



## Louisiana Barrier Island Comprehensive Monitoring Program (BICM)



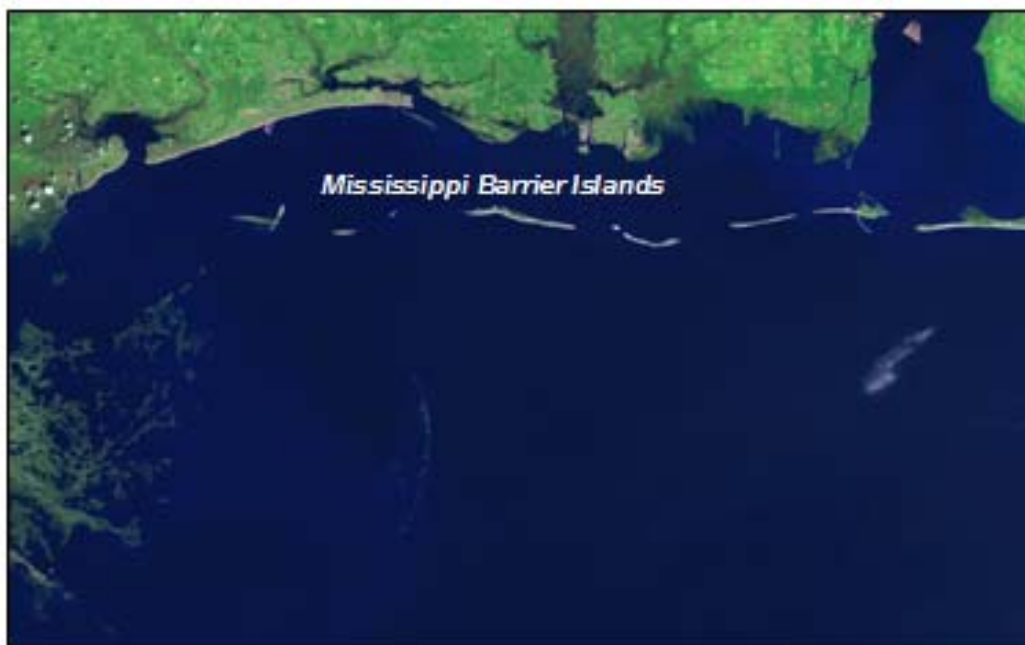
Predicting the Resilience of the Chandeleur Island Chain as a Function of Restoration Options:

- Can the islands be restored, and is it feasible in the long and short term to restore and rehabilitate parts of Breton National Wildlife Refuge?
- How much benefit will restoration provide to struggling habitats, or will the islands rebuild themselves naturally?
- Is there a point of no return for the Chandeleur and Breton Islands; are they ultimately going to disappear completely?

## Northern Gulf of Mexico Ecosystem Change and Hazard Susceptibility Project

- Multi-agency Barrier Island Restoration Recommendation:
- Restore crucial sediment transport and budget to a natural state through littoral zone deposition and small-scale beach nourishment projects
  - Monitoring during and following the implementation of the barrier island restoration, and adaptive management to assess progress and short and long term impact

# 2006–2009 Research Areas, LMA Shelf



## Louisiana Barrier Island Comprehensive Monitoring Program (BICM)



Predicting the Resilience of the Chandeleur Island Chain as a Function of Restoration Options:

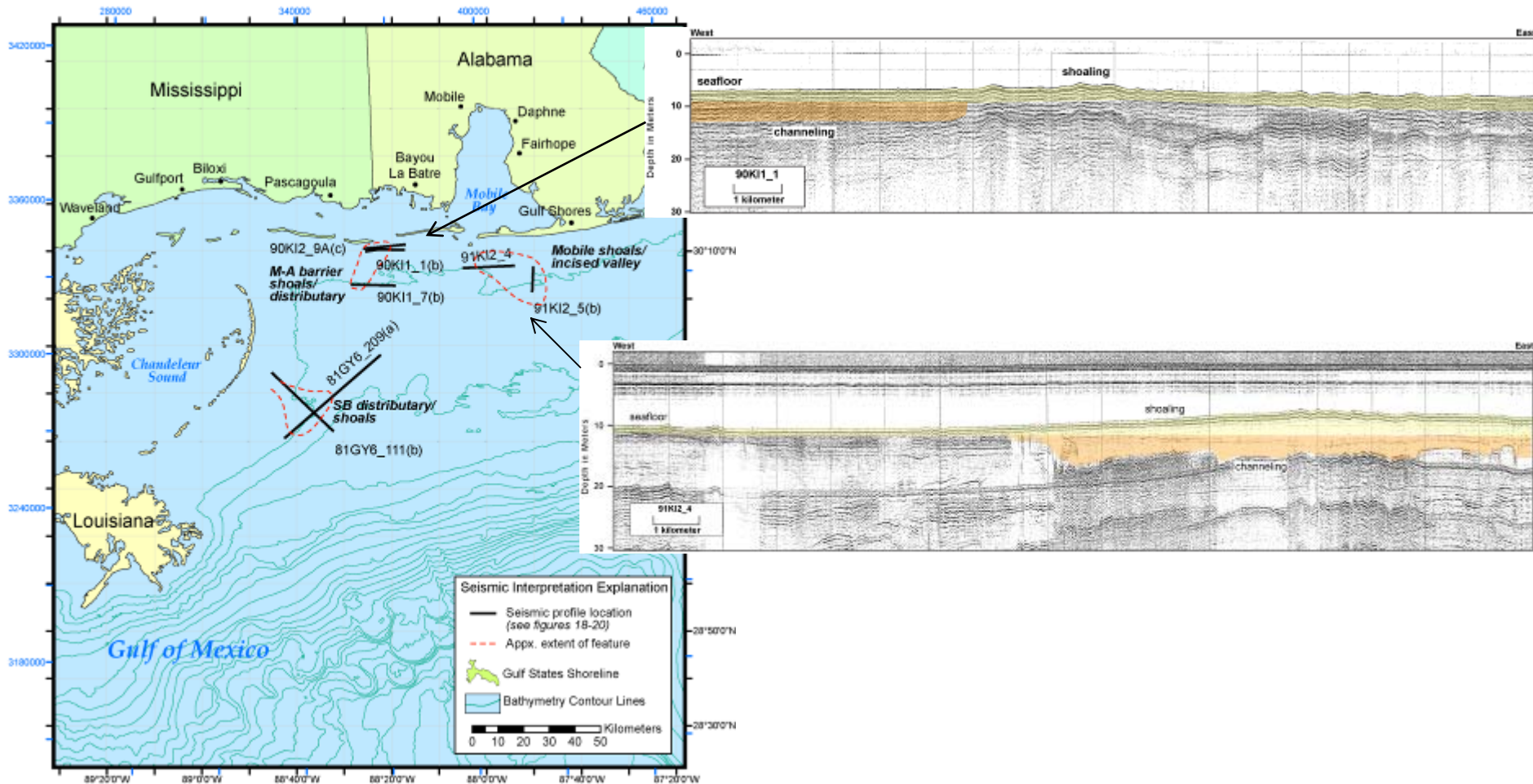
- Can the islands be restored, and is it feasible in the long and short term to restore and rehabilitate parts of Breton National Wildlife Refuge?
- How much benefit will restoration provide to struggling habitats, or will the islands rebuild themselves naturally?
- Is there a point of no return for the Chandeleur and Breton Islands; are they ultimately going to disappear completely?

## Northern Gulf of Mexico Ecosystem Change and Hazard Susceptibility Project



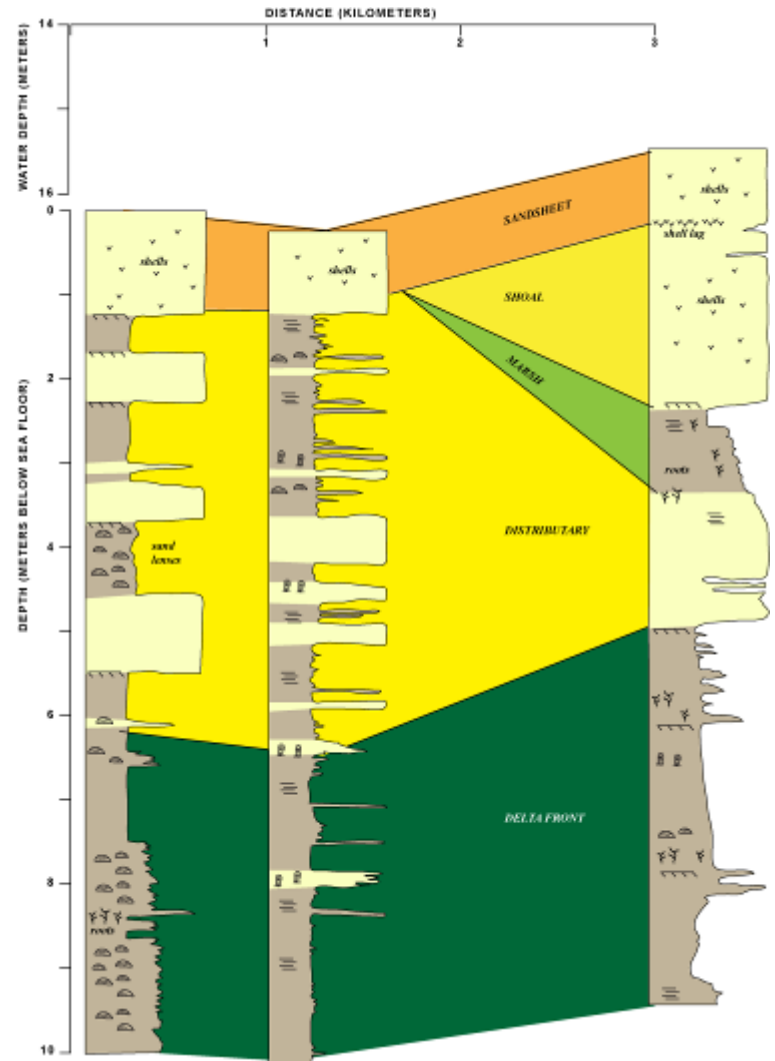
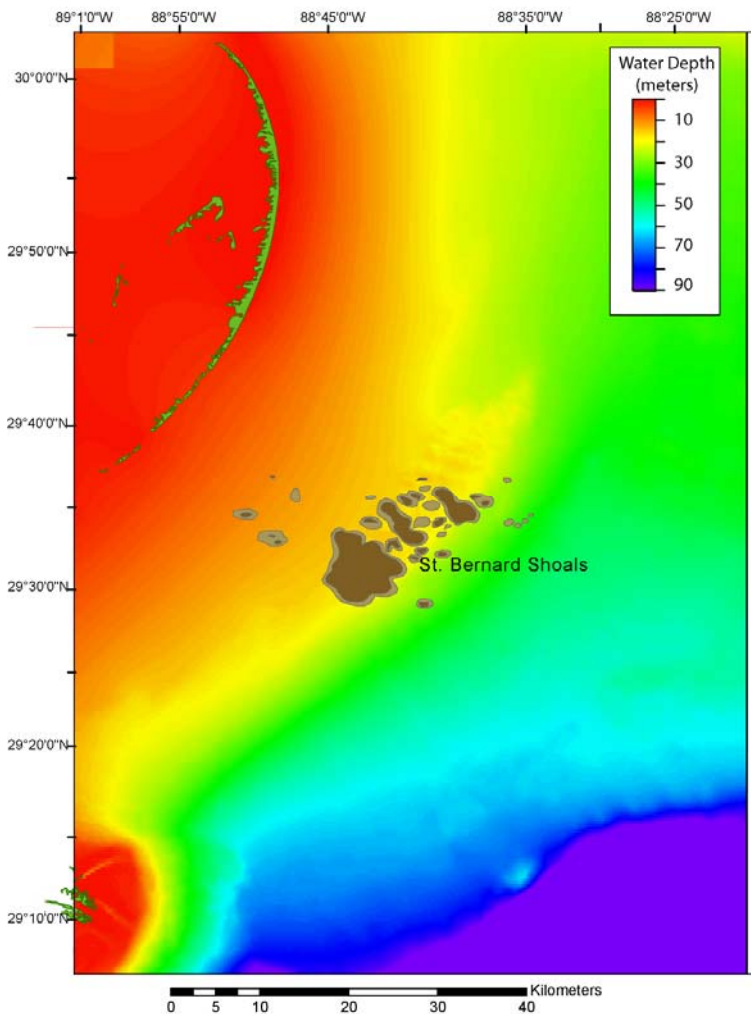
- Multi-agency Barrier Island Restoration Recommendation:
- Restore crucial sediment transport and budget to a natural state through littoral zone deposition and small-scale beach nourishment projects
  - Monitoring during and following the implementation of the barrier island restoration, and adaptive management to assess progress and short and long term impact

# Areas of Potential Sand Resources, LMA Shelf

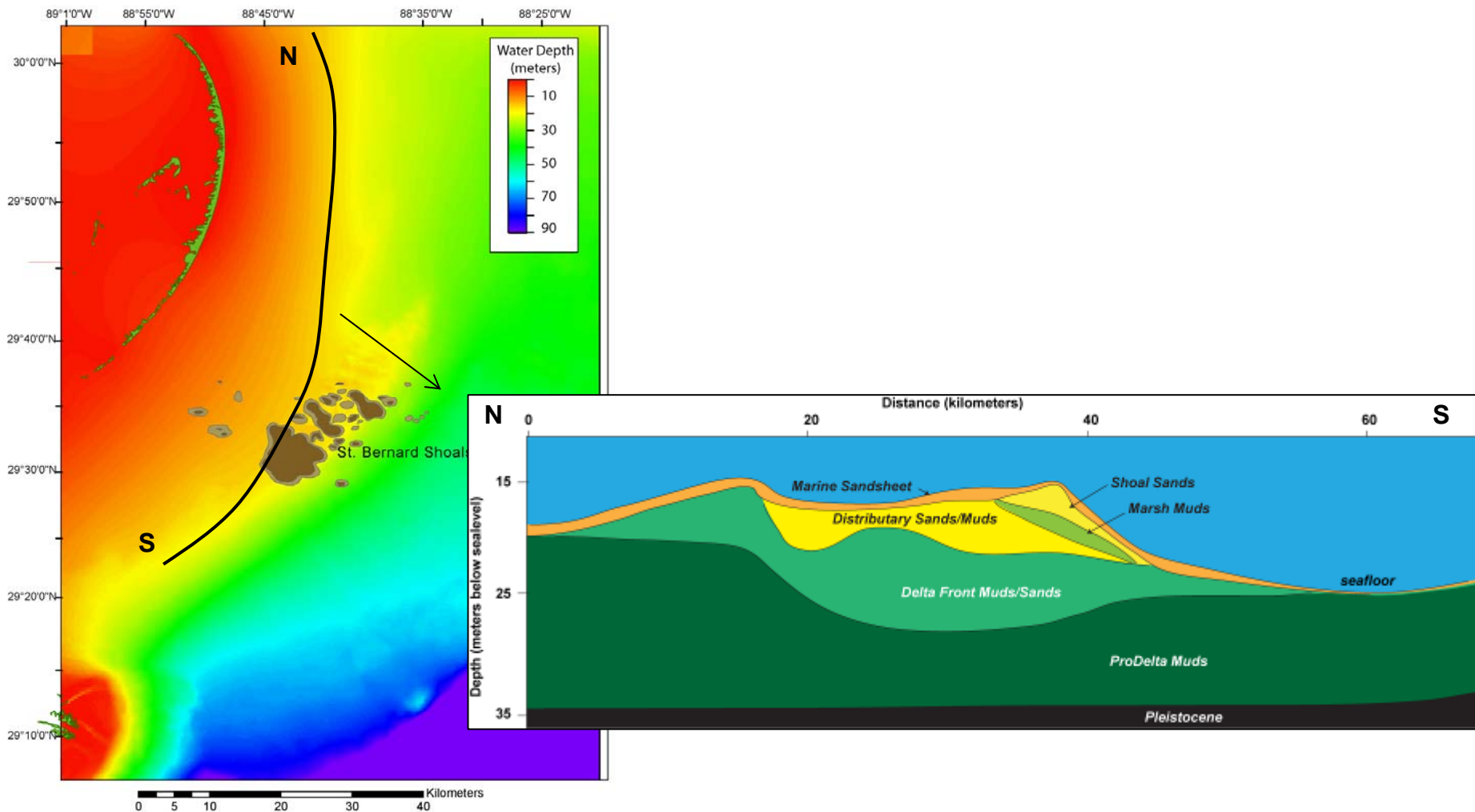




# St. Bernard Distributary/Shoals

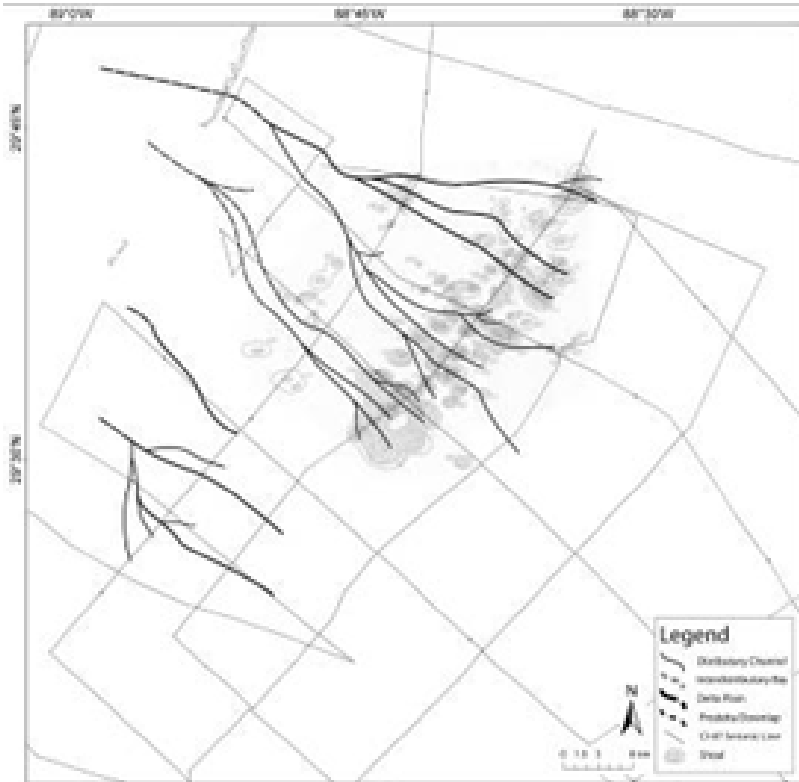


# St. Bernard Distributary/Shoals

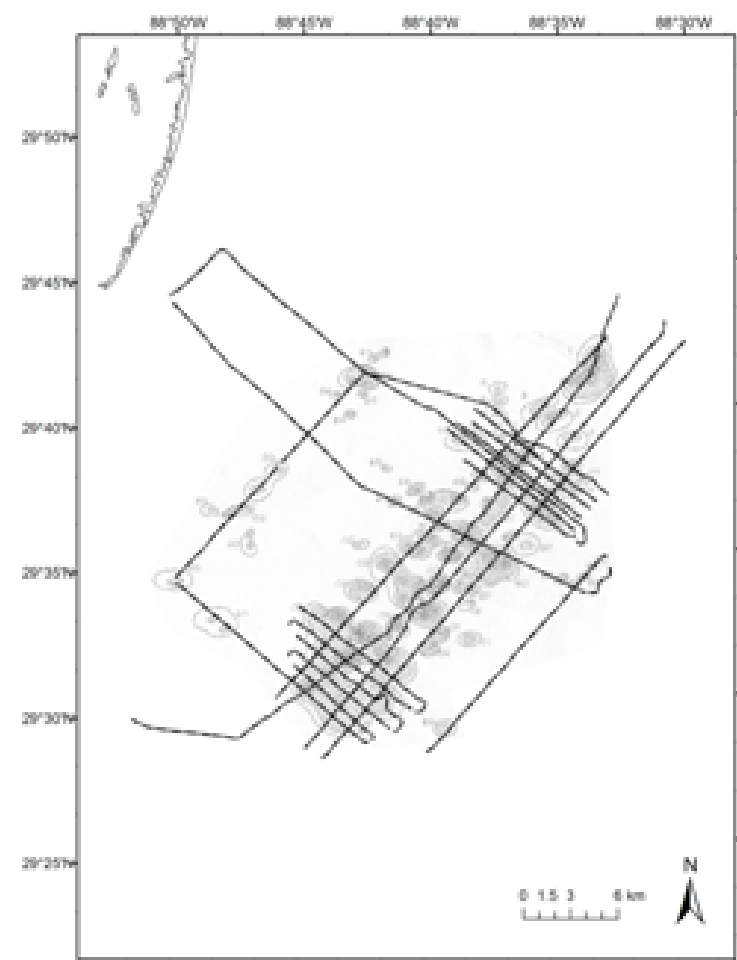


# St. Bernard Distributary/Shoals

## St. Bernard distributary network

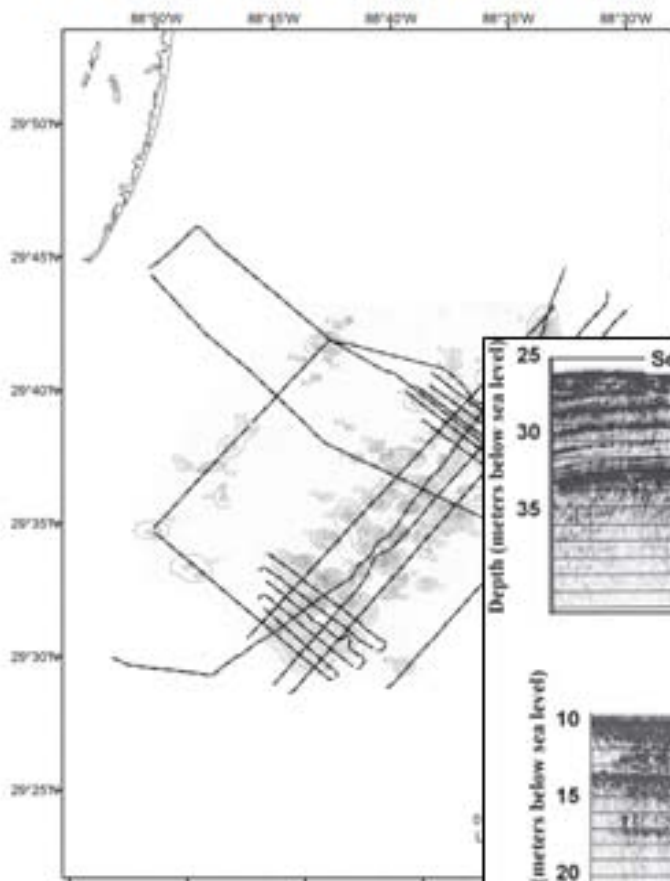


## 2008 UNO/FWS/USGS Survey

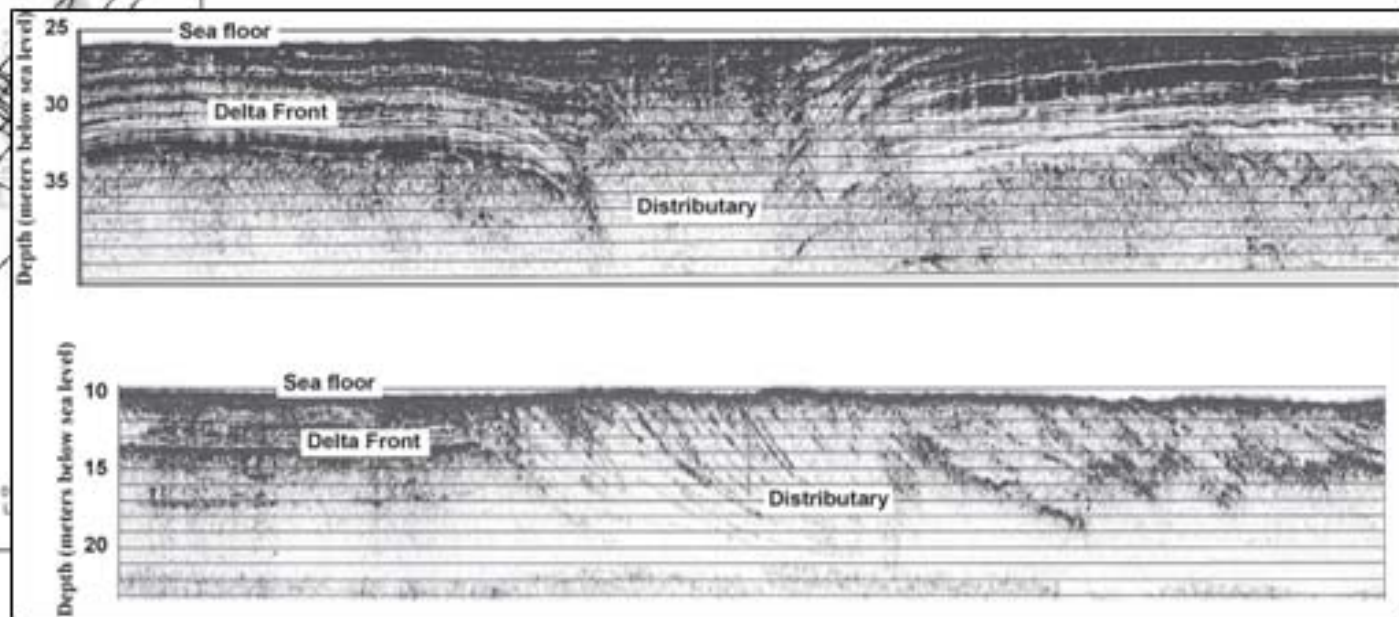


# St. Bernard Distributary/Shoals

## 2008 UNO/FWS/USGS Survey

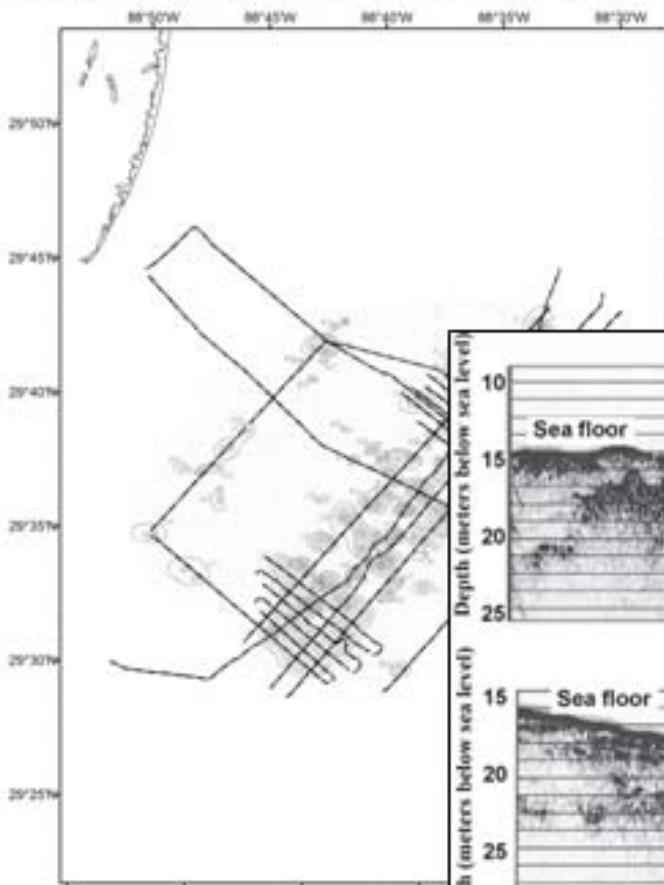


## Distributary deposits

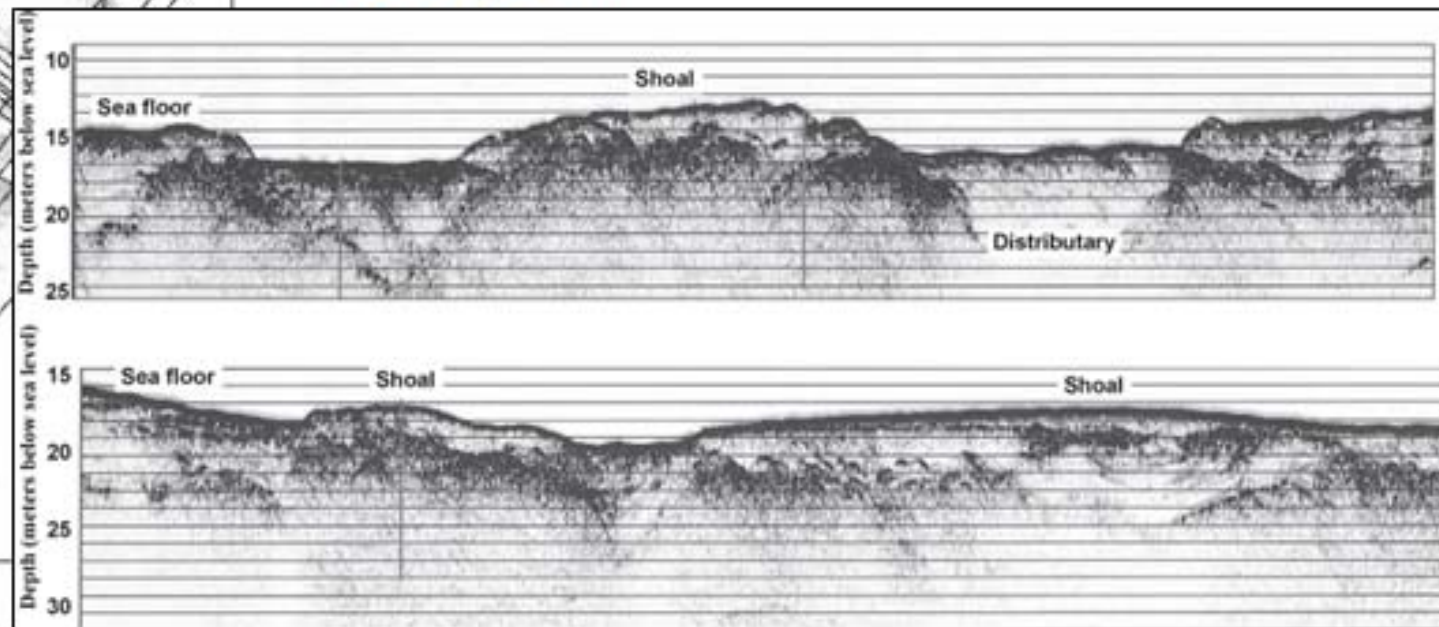


# St. Bernard Distributary/Shoals

2008 UNO/FWS/USGS Survey

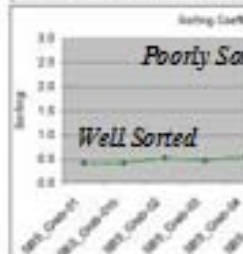
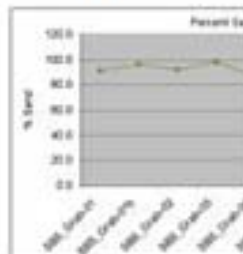
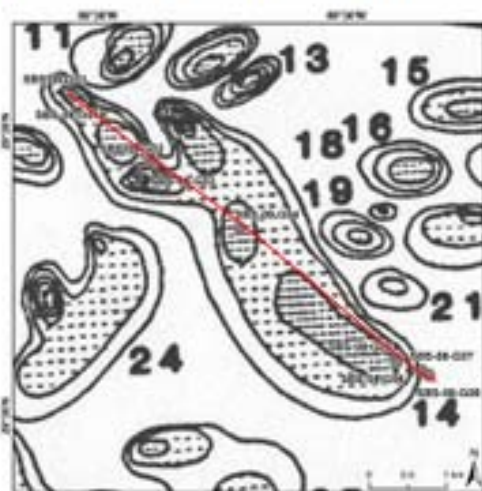


Shoal deposits



# St. Bernard Distributary/Shoals

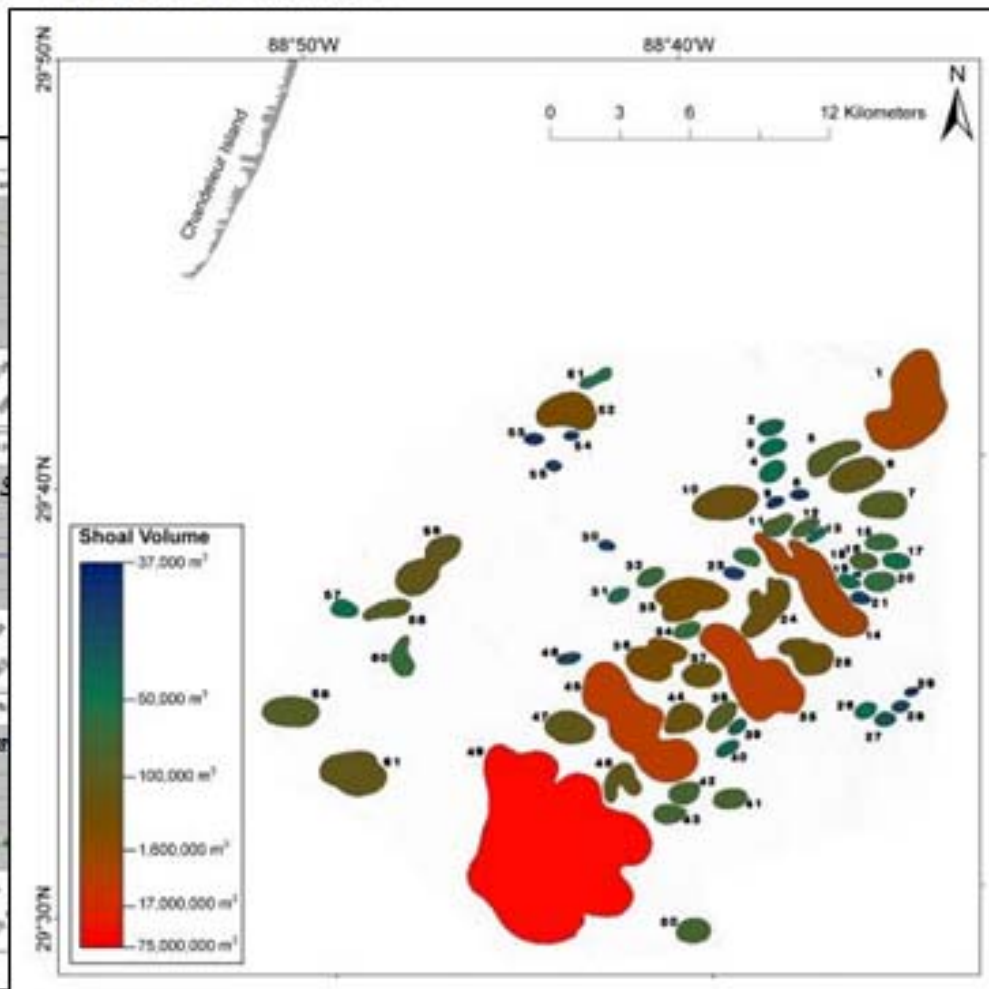
## 2008 Grab Samples, grainsize analysis



St. Bernard Shoals 2008 Grab Samples  
Grainsize Data Table  
Date: 08/11/08

Sample ID	Depth (m)	Latitude	Longitude	Grain Size (mm)	Sorting	Coarse (%)	Fine Sand (%)
M21	10	29°30'N	88°50'W	0.075	0.5	95	15
C20	10	29°30'N	88°48'W	0.075	0.5	95	15
M22	10	29°30'N	88°46'W	0.075	0.5	95	15
C21	10	29°30'N	88°44'W	0.075	0.5	95	15
M23	10	29°30'N	88°42'W	0.075	0.5	95	15
C22	10	29°30'N	88°40'W	0.075	0.5	95	15

## Volume estimates



# St. Bernard Distributary/Shoals

## 2009 Sediment Core Strategy

