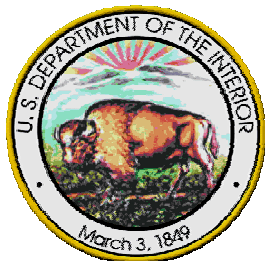


MMS ITM 2009 Coastal Impact Assistance Program Louisiana Summary

**Robert J. Martinson
MMS – Gulf of Mexico Regional Office**



MMS

Energy Policy Act of 2005

Created Coastal Impact Assistance Program (CIAP)

Secretary of the Interior delegated authority and responsibility to the Minerals Management Service

Mandate: Disburse to 6 eligible producing states and 67 Coastal Political Subdivisions (CPS's) \$250M from each Fiscal Year (FY) 2007–2010

Eligible producing states:

AL, AK, CA, LA, MS, and TX

Eligible CPS's (Counties, Parishes, or Burroughs):

AL (2); AK (8); CA (17); LA (19); MS (3); TX (18)

FY 2007 & 2008 Allocations

State	Allocation Percent	Total/Year	State/Year	CPS/Year
Alabama	10.54%	\$ 25,551,607	\$16,608,544	\$ 8,943,062
Alaska	1.00%	\$ 2,425,000	\$ 1,576,250	\$ 848,750
California	3.07%	\$ 7,444,441	\$ 4,838,887	\$ 2,605,554
Louisiana	52.60%	\$127,547,898	\$82,906,134	\$44,641,764
Mississippi	12.76%	\$ 30,939,850	\$20,110,902	\$10,828,947
Texas	20.04%	\$ 48,591,202	\$31,584,281	\$17,006,920

Coastal Impact Assistance Program

CIAP is a 2-Phased Process

Phase 1: Plan Approval

Phase 2: Grant Approval

Funds will not be disbursed until Plan approval *and* individual Grant approval

CIAP Phase 1: Plan Status

State	Draft Plan	Final Plan
Alabama (2 year)	25 September 2007	26 February 2008
Louisiana (4 year)	13 February 2007	4 June 2007 APPROVED 29 Nov 07
Mississippi (4 year)	15 May 2007	17 December 2007
Texas (1 year)	4 January 2008	3 June 2008 Soon to be Approved
Alaska (4 year)	31 January 2008	1 July 2008 APPROVED 25 Sept 08
California (4 year)	21 October 2008	February 2009

CIAP Phase 2: Grant Process

MMS accepts grant applications after Plan Approval and Program Announcement Posted

Applications must be submitted using Grants.gov

Projects *must* be in the approved plan

Grant period – 1, 2, 3, or 4 year

CIAP Phase 2: Grant Process (continued)

Grant Applications Review and Approval:

- **Project Officer**
- **Funding Officer**
- **Grant Officer**

Funding for LA CIAP Plan

Total Funding FY 07 & 08	\$255,095,796
Total Funding FY 09 & 10	TBD (April 2009)

CIAP Allocations by Fiscal Year

- Allocations are based on Qualified OCS Revenues Ratio:

$$\frac{\text{State QOCSR}}{\text{Total QOCSR}}$$

- QOCSR - includes bonus bids, rents, royalties, net profit share payments, and any late-payment interest from natural gas and oil leases
- FY07 & FY08 – based on FY06 QOCSR
- FY09 & FY10 – based on FY08 QOCSR
- 65% of annual allocation to state
- 35% of annual allocation to CPS's
- Minimum of 1% will be provided to each state

Summary of *Approved* LA CIAP Plan*

Tier 1 Projects

	<u>State</u>	<u>Parish</u>	<u>Combination</u>
• AU1	10	66	9
• AU2	0	6	0
• AU3	0	3	0
• AU4	0	1	0
• AU5	4	21	1

*Amended LA CIAP Plan is in Review

Summary of LA CIAP Plan

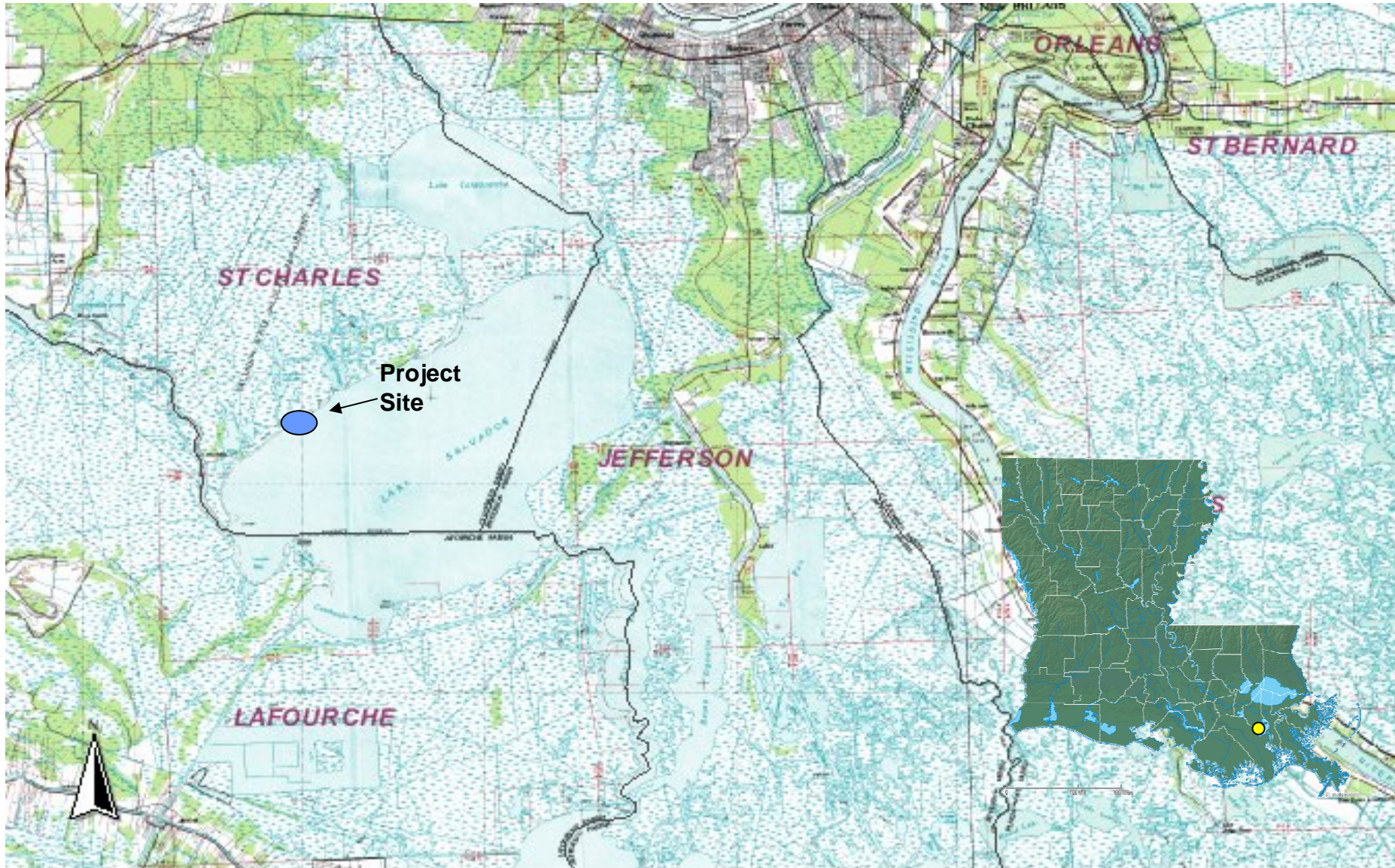
- **Wetland and Barrier Shore Restoration** **8,512 ac**
- **Wetland Conservation** **124,262 ac**
- **Mississippi River Diversion** **21,600 cfs**
- **Shoreline Restoration** **74.4 mi**

- **57 Louisiana Grant Applications Received and 17 Awarded (\$64 million approx) as of 23 December 2008**

Lake Salvador Shoreline Protection

- **Funding: \$4,600,000**
- **Implementation Period: 2 years**
- **Objectives:**
 - **Install 7,300 linear feet of rock dike**
 - **Rock dike openings every 1,000 feet, for aquatic organism access**
 - **Reduce shoreline erosion in half (currently 13 feet/year)**

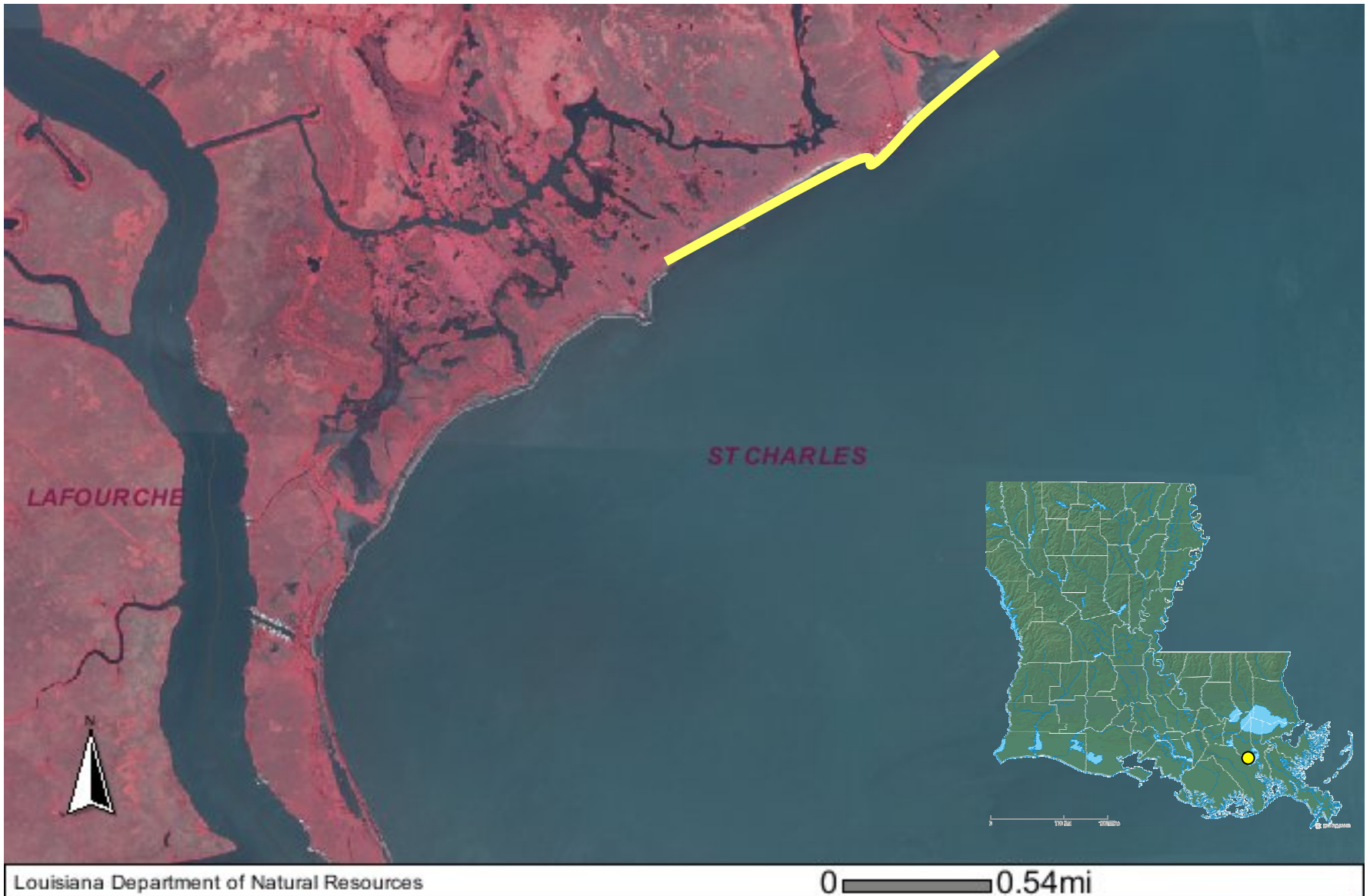
Lake Salvador



Lake Salvador



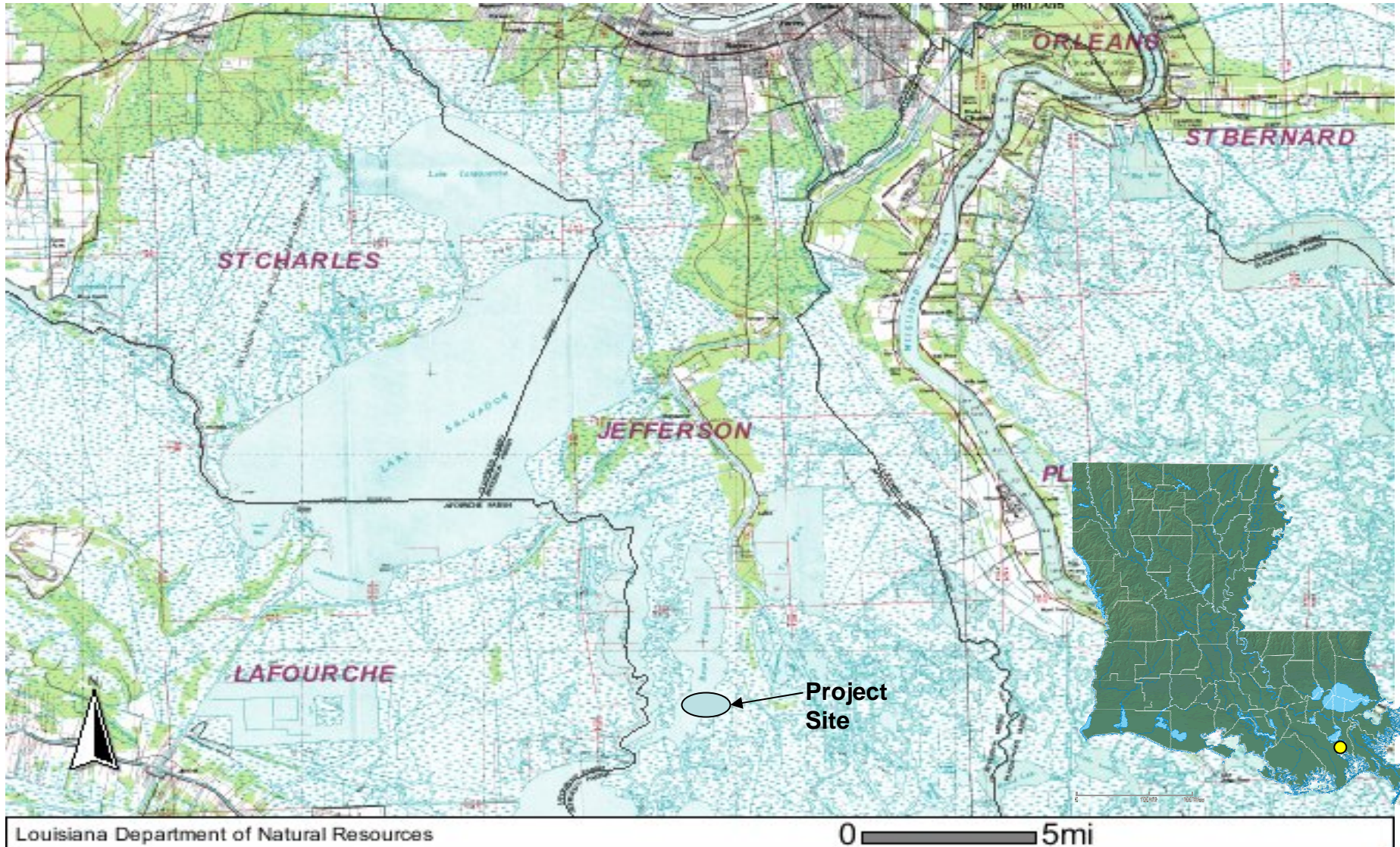
Lake Salvador



Barataria Land Bridge Dedicated Dredging

- **Funding: \$18,000,000**
- **Implementation Period: 3 years**
- **Objective:**
 - **Marsh restoration (752 acres)**

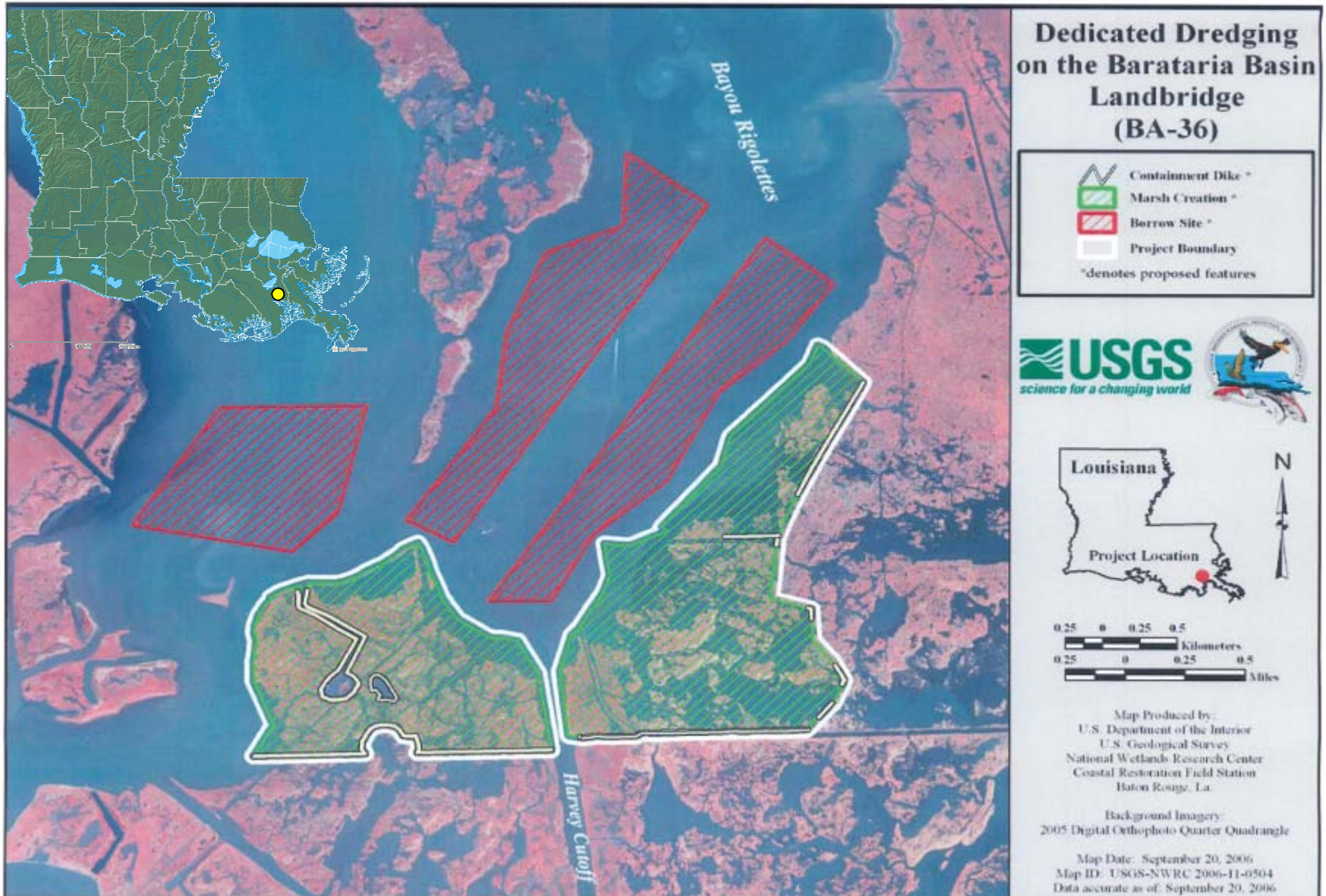
Barataria Land Bridge



Barataria Land Bridge



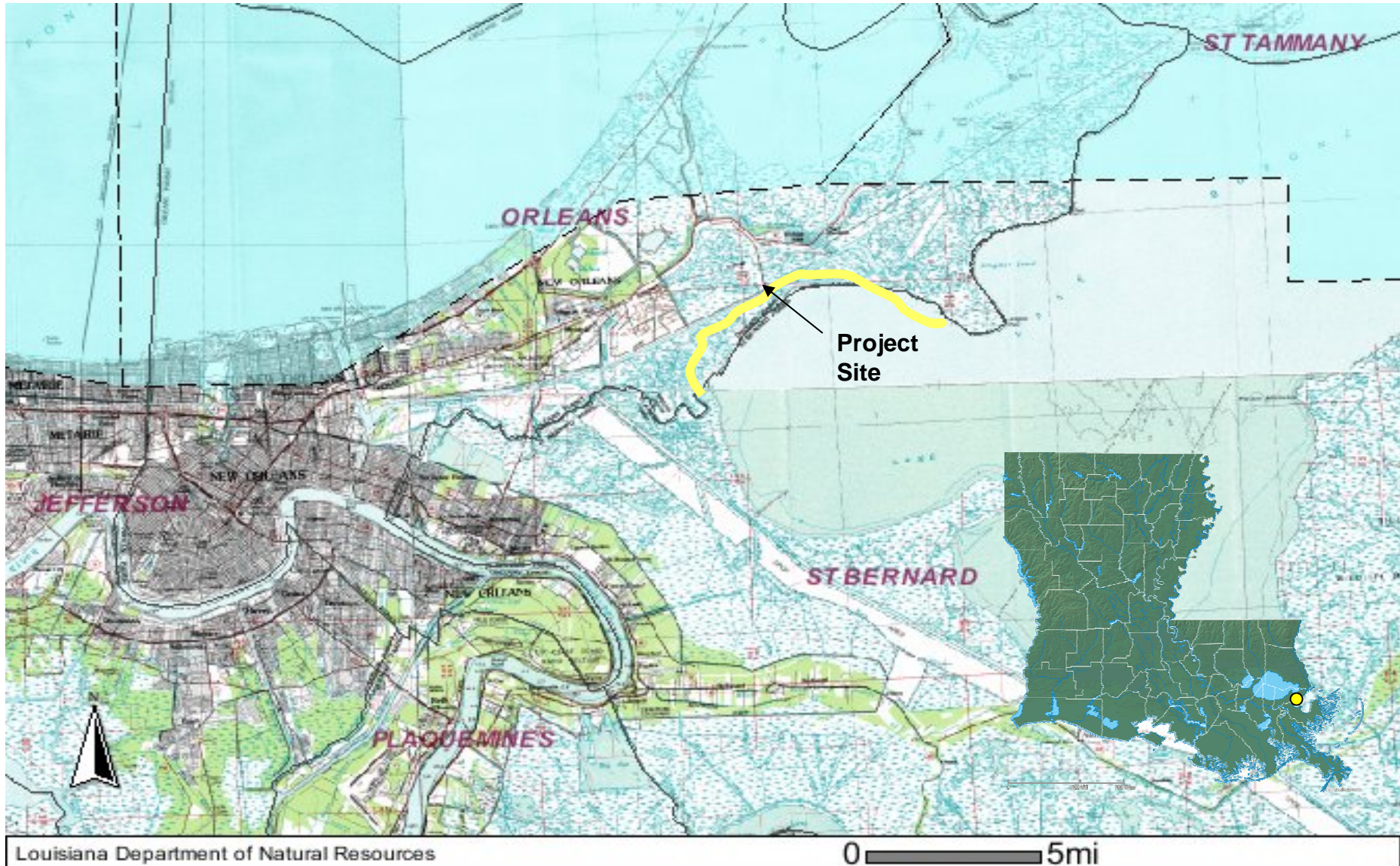
Barataria Land Bridge



Orleans Land Bridge

- **Funding: \$42,295,966**
- **Implementation Period: 3 years**
- **Objectives:**
 - **Construct 50,000 feet of rock breakwater on Lake Borgne between Bayou Beinvenue and Alligator Point**
 - **Restore 220 acres of marsh and protect another 1,400 acres of marsh by stopping shoreline erosion**

Orleans Land Bridge



Orleans Land Bridge



Orleans Land Bridge



Orleans Land Bridge Shoreline Protection/Marsh Creation



-  Marsh Creation
-  Shoreline Protection



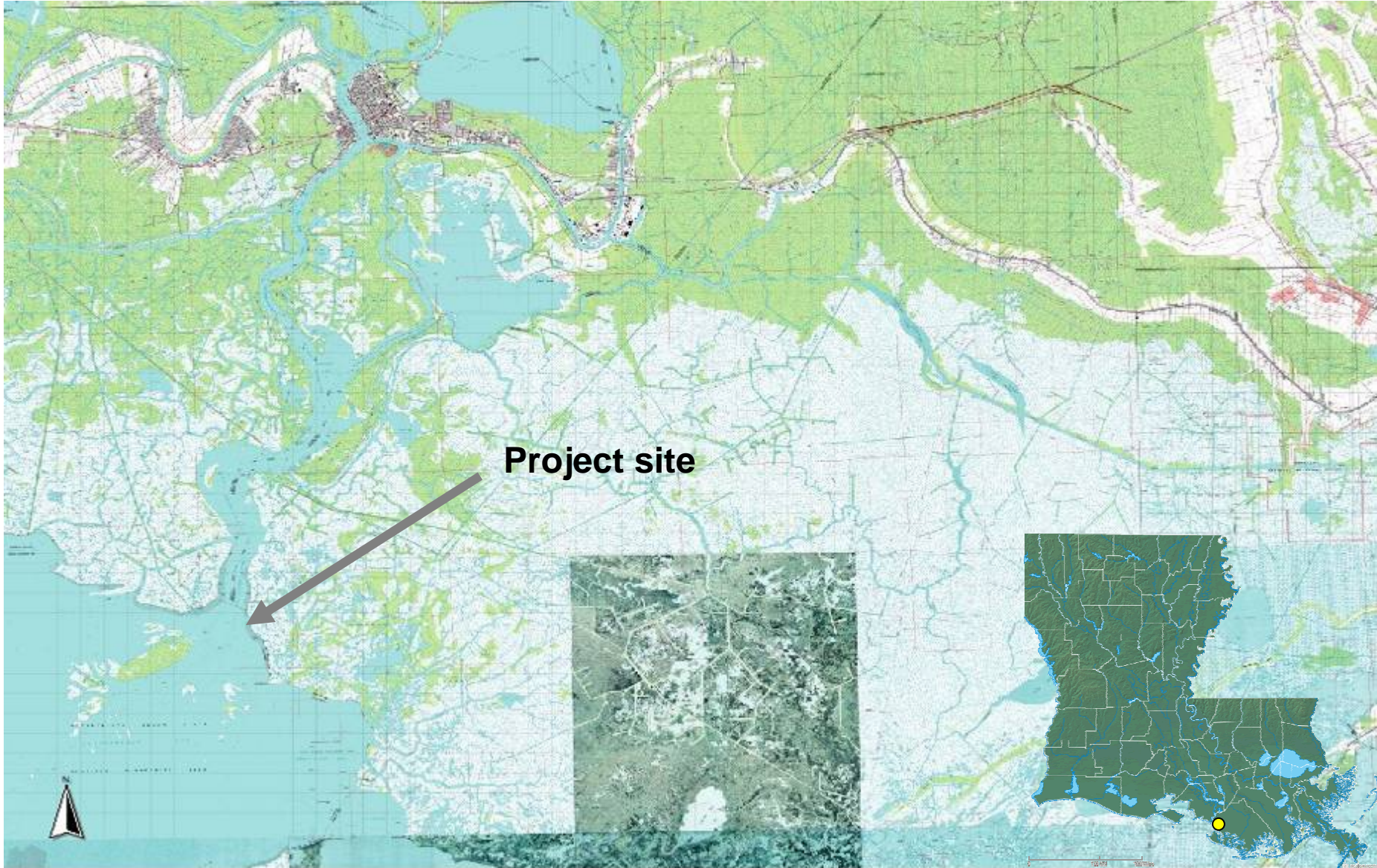
Image Source:
2005 DOQQ Aerial Photography
Map Date: November 8, 2006



Deer Island Pass Realignment

- **Funding: \$2,860,660**
- **Implementation Period: 1 year**
- **Objectives:**
 - **Dredge shallows at the mouth of Deer Island Bayou to increase water and sediment flow through Deer Island Pass**
 - **Create 30 acres of marsh with dredge material**

Deer Island Pass Realignment



Project site

Deer Island Pass Realignment



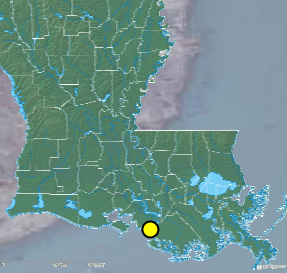
Deer Island Pass Realignment

Legend

- Re-Alignment
- Marsh Creation

2,000 1,000 0 2,000
Feet

REFERENCE/PROJECTION:



Coastal Impact Assistance Program

Contact Information

www.mms.gov/offshore/CIAPmain.htm

Robert Martinson
1201 Elmwood Park Blvd, MS 5450
New Orleans, LA 70123

Robert.martinson@mms.gov

(504) 736-1720 and 736-2510