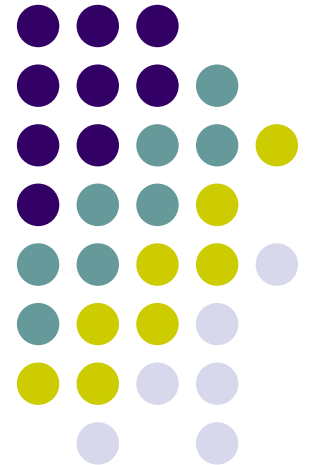


Session 2F: Socioeconomics II

Gulf Coast Communities & the Fabrication & Shipbuilding Industry: A Comparative Community Study

Diane Austin
University of Arizona



Purpose of the Fabrication and Shipbuilding Study

- Describe the industries, the services they provide, and their labor demands and how they meet them
- Describe the geographic distribution and environmental impacts
- Discuss trends, dynamics, and demographic and socioeconomic significance
- Explore variation within the industries (e.g., large firms vs. small ones) and the effects of that variation

Methods

- Historical Overview and Context
- Community Ethnography
- Demographic Context



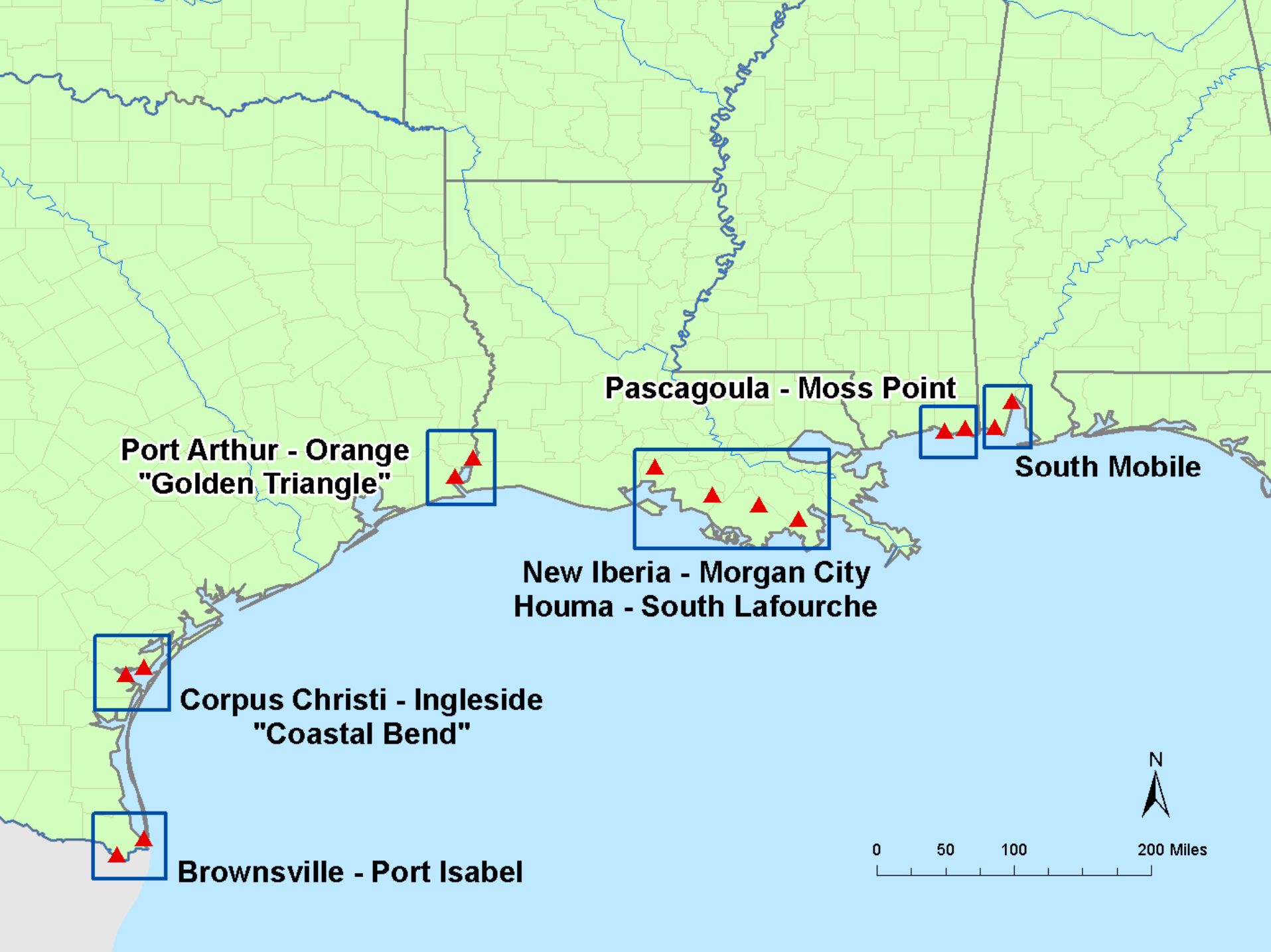
Comparative Community Study

Initial Scoping visits to nine communities

Selection of communities: Brownsville/Port Isabel (TX); Ingleside/Corpus Christi (TX); Port Arthur/Orange (TX); New Iberia/Morgan City/Houma/South Lafourche (LA); Pascagoula/Moss Point (MS); South Mobile (AL)

At least three months per community: interviews, focus groups, participant observation, monitoring local newspapers, historical document review

Upcoming focus group sessions to discuss preliminary findings



Kinds of Operations

- Small, one- to two- person shops to large, multinational corporations with multiple yards
- Service offshore oil and gas industry only; service multiple clients with offshore oil and gas; service clients other than offshore oil and gas
- From pre-1960s to recently formed
- From repair/refurbish to new build to ship breaking
- From local to international workforce
- Union vs. non-union

The History of the Gulf Coast Shipyards and Fabrication Industry

Jason Theriot, University of Houston

Augmenting Local Infrastructure to Meet Industry Needs: Community Responses to the Fabrication and Shipbuilding Industries

Diane Austin, University of Arizona

From Boats to Bicycles: Diversification, Social Networks, and Culture on Small Shipyards in Alabama and South Louisiana

Victoria M. Phaneuf and Sarah Raskin, University of Arizona

Exploring the Social Footprint of Ports

Tom McGuire, University of Arizona

Cones of Uncertainty: The Nature of Hurricane Impacts

Ben McMahan, University of Arizona

Discussion

- Siting of yards and facilities depends on physical features, access to transportation, and sociopolitical climate
- Move into deeper water means fewer but more productive wells
- Shift from large, surface structures to smaller, underwater networks