

James Michael Price

Coordinator for Marine Mammals Studies



www.gettyimages.com/

Headquarters

James.Price@boem.gov

703-787-1641



OSC Scientific Committee Meeting
May 2013

Jonathan Blythe

Data Manager / Biologist – Headquarters

formerly

NODC contractor – archiving biological data

Jonathan.Blythe@boem.gov

703-787-1543

2.2 FY 2014 Table

Table 2. Headquarters Studies Proposed for the Fiscal Year 2014 NSL

Page 33; MM (Marine Mammals); Tentative Rank 04

Developing BOEM's Access to Protected Species Occurrence Data for Impact Analyses and Rule-making

2.2 FY 2014 Table

Table 2. BOEM Alaska OCS Region Studies Proposed for the FY 2014 NSL

Page 45; MM (Marine Mammals); Tentative Rank 03

**Data Interface Tools to Support
Environmental Analyses:
Interpretation of Existing Marine
Mammal Data**

BOEM Information Need:

Quick-Response Decision Making

e. g. support of oil-spill response

Impact Assessments and Rule-Making
get information quicker and on a
finer geographic grid



Background:

A) Relationship with Previous Work/Efforts

Interagency Effort to Improve Archiving of and Access to Marine Biological Data

NATIONAL OCEANOGRAPHIC
DATA CENTER (NODC)
UNITED STATES DEPARTMENT OF COMMERCE

OBIS-USA / USGS



OBIS SEAMAP



Background:

A) Relationship with Previous Work/Efforts

NOAA CetMap

cetacean density and distribution maps
working with OBIS-SEAMAP

NOAA CetSound

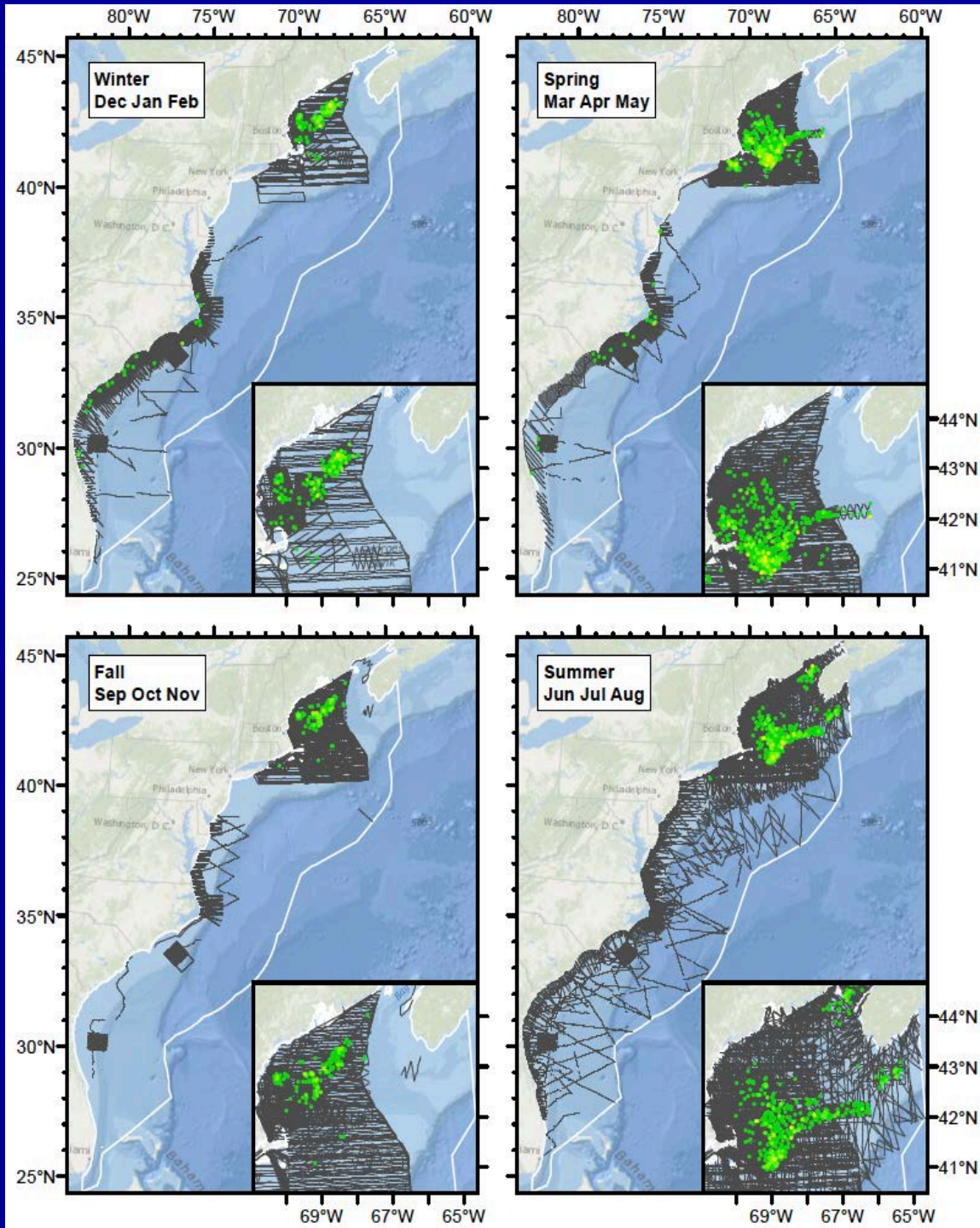
temporal, spatial, and spectral characteristics of
underwater noise

North Atlantic Right Whales: *Eubalaena glacialis*

Combined survey effort

*Do not circulate
models currently in-review*

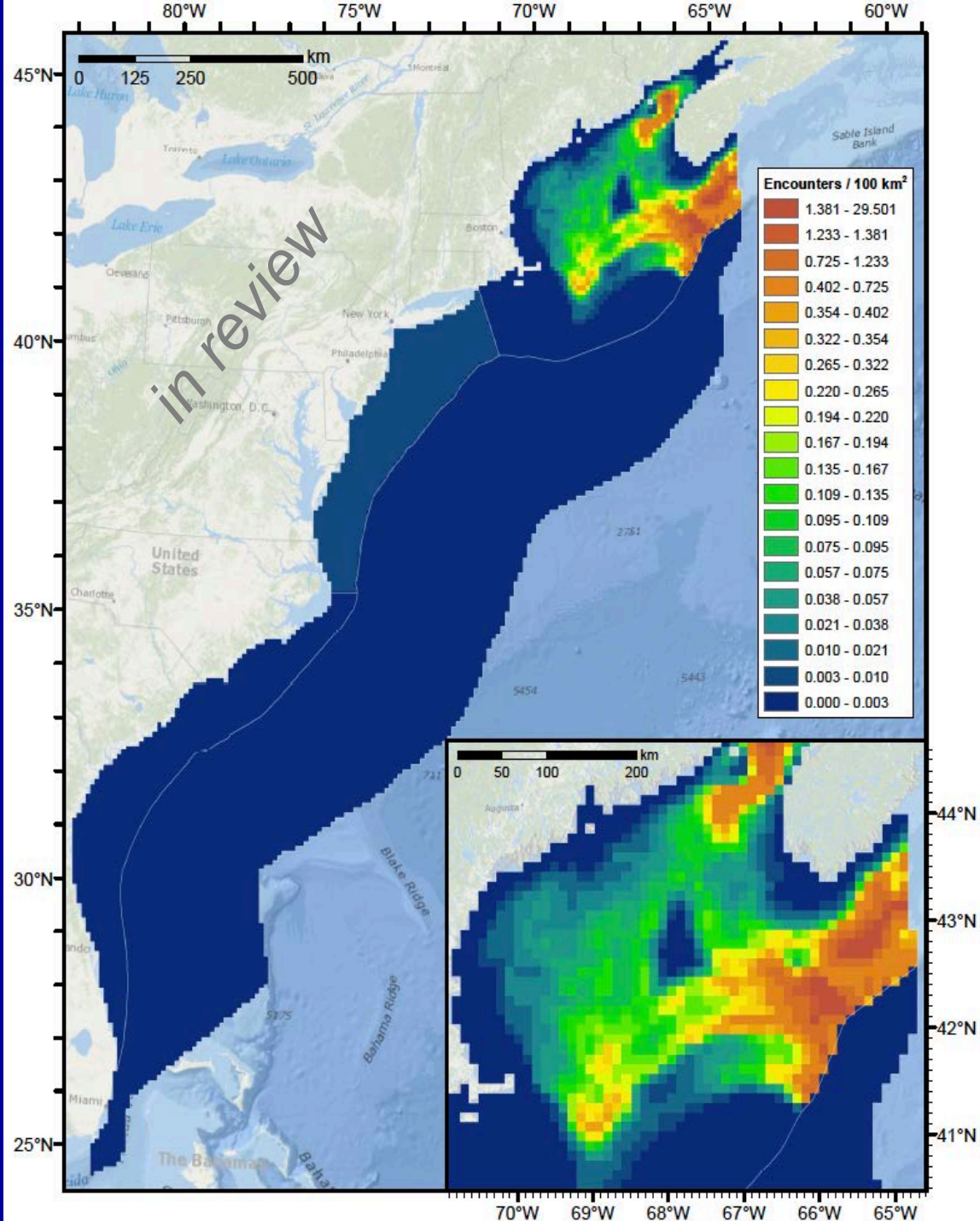
Roberts, Best, Fujioka and Halpin 2013
Marine Geospatial Ecology Lab
Duke University



North Atlantic Right Whales:
Eubalaena glacialis
density
summer season
(May – July)

*Do not circulate
models currently in-review*

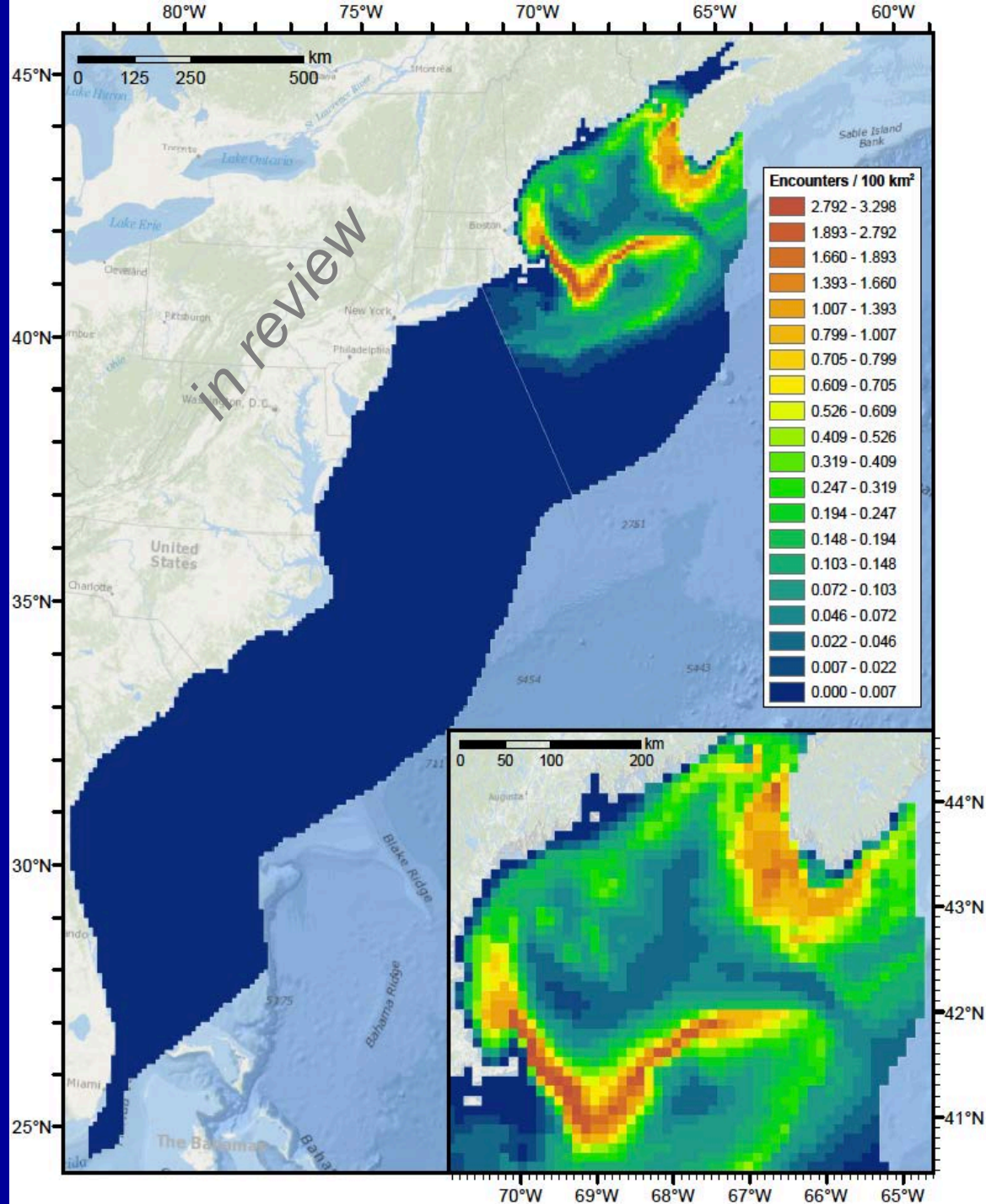
Roberts, Best, Fujioka and Halpin 2013
Marine Geospatial Ecology Lab
Duke University



Humpback whales
Megaptera novaeangliae
density
summer season
(May – July)

*Do not circulate
models currently in-review*

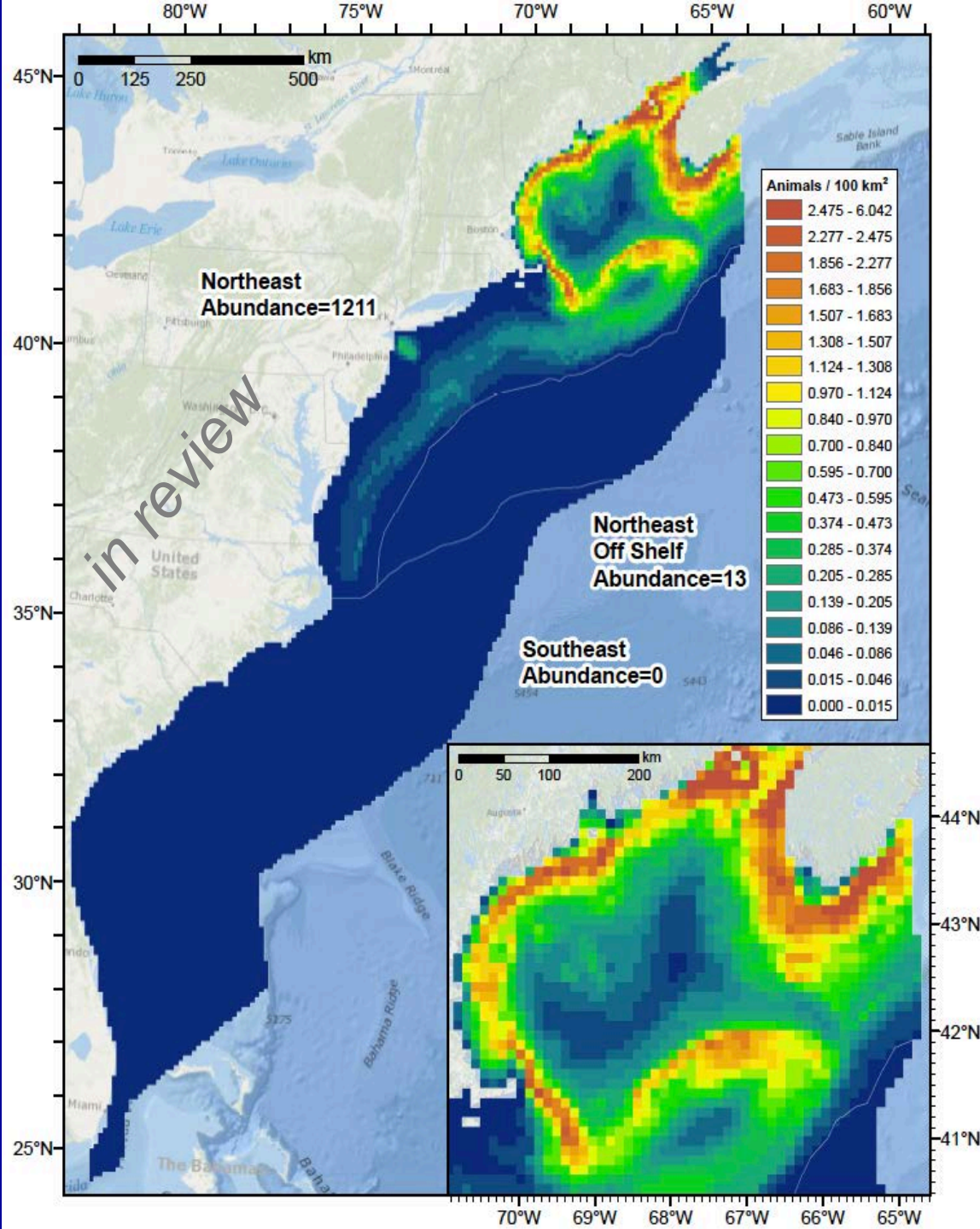
Roberts, Best, Fujioka and Halpin 2013
Marine Geospatial Ecology Lab
Duke University



Minke whales
Balaenoptera acutorostrata
density
summer season
(May – July)

*Do not circulate
models currently in-review*

Roberts, Best, Fujioka and Halpin 2013
Marine Geospatial Ecology Lab
Duke University





Study's Objectives:

Improve Timeliness of Data Availability

ideally weekly updates

Improve Data Input to NODC & OBISes

registration; meta data; standardization

Brining Modeling into Operational Mode

automate density mapping;

accommodate bureau-specific needs



Study's Methods:

Provide Additional Funding to the OBISes

Provide Critical Feedback on BOEM's Informational Needs.

Questions Please