

Bay State Wind – A DONG Energy and Eversource Initiative

**BOEM RI/MA Task Force Meeting Falmouth, 16 May 2017
Pernille Hermansen, Permitting Project Manager
DONG Energy Wind Power AS**



Presentation Overview

- Introduction the Project and the JV partners
- Bay State Winds Environmental Program
- Survey Schedule Overview
- Agency/Stakeholder Outreach
- Fisheries Outreach and Coordination





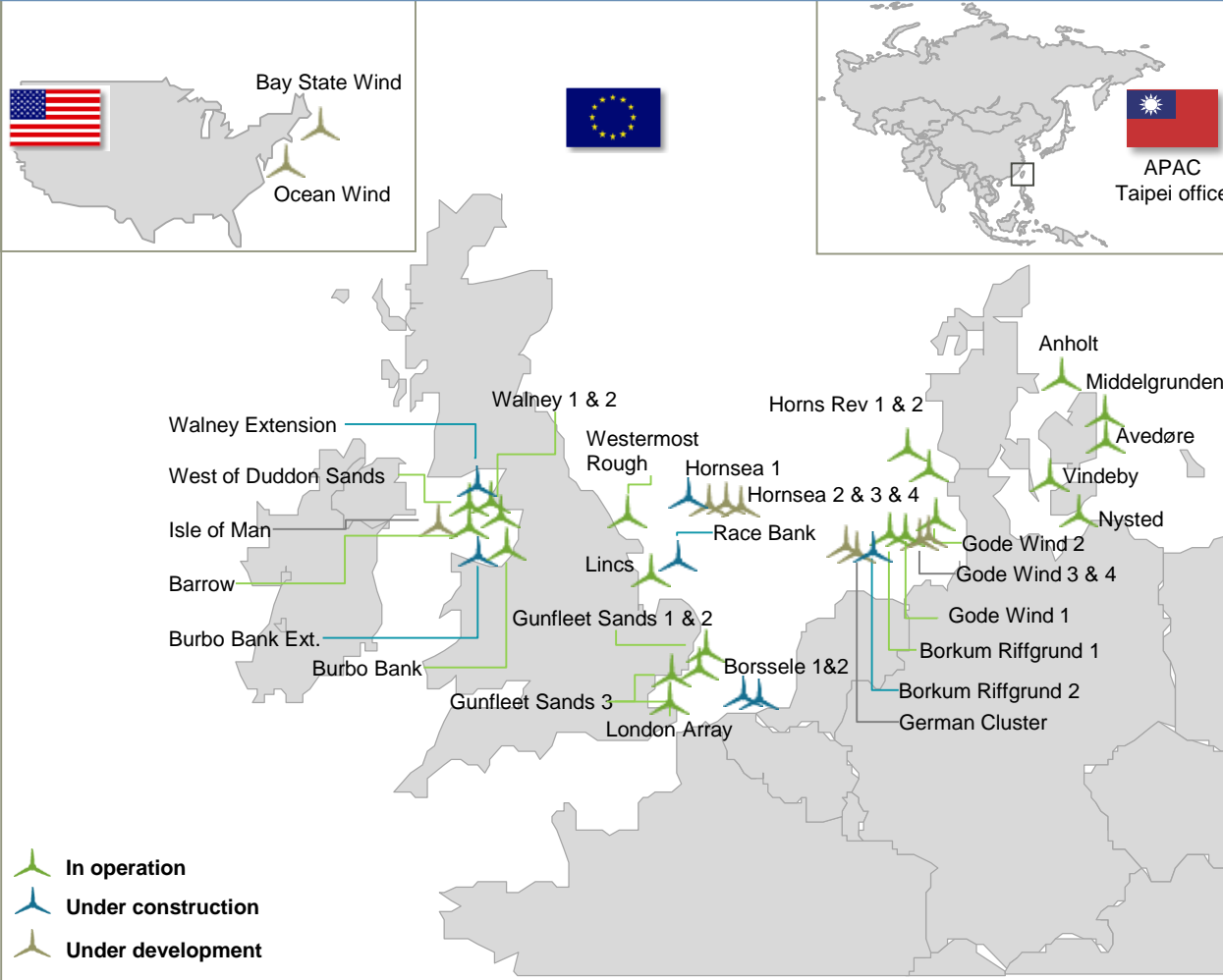
DONG Energy & Eversource have partnered to make large-scale offshore wind a reality in the United States

- 50/50 partnership announced in December, 2016
- DONG Energy global leader in offshore wind
- Eversource premier transmission builder in New England
- Jointly own - 300 square mile lease 15-25 miles south of Martha's Vineyard
- Lease will be developed in phases
- Capacity to develop at least 2,000MW



DONG Energy Wind Power overview

DONG Energy Wind Power geographical footprint



Unparalleled experience and track record

1991 **26 years of experience and track record in the offshore wind sector** 2017

21 offshore wind farms in operation

7 offshore wind farms under construction

3.6 GW
Constructed capacity

2,000
Dedicated employees

3.8 GW
under construction

7.5 million
Europeans with clean electricity

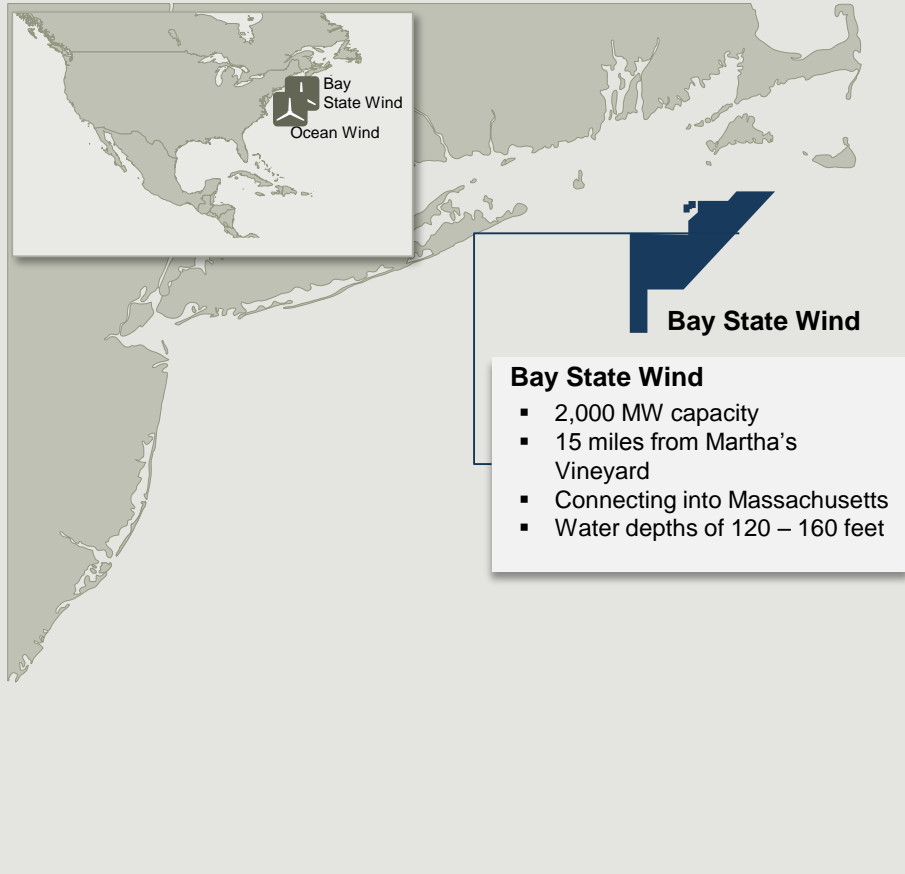
3.6 GW
World's leading operator

14
Partnerships



DONG Energy Wind Power in the U.S.

Secured project rights to build large scale projects in the U.S. with total of ~3 GW capacity¹ and entered U.S. 50/50 JV



A DONG Energy & Eversource Initiative

1. Subsidies, grid connections and planning consents have not yet been secured

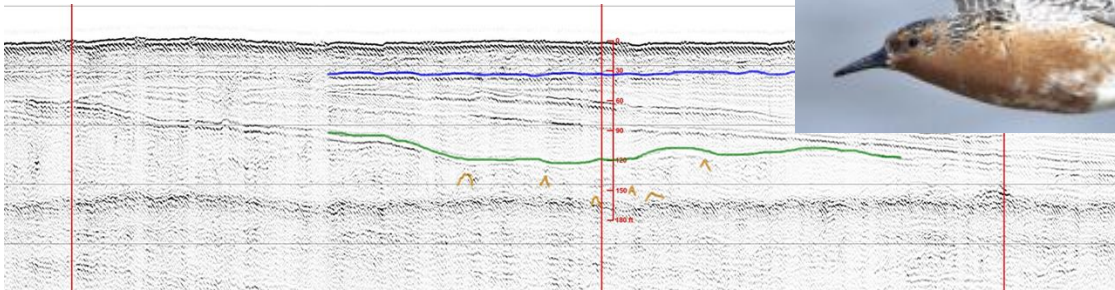
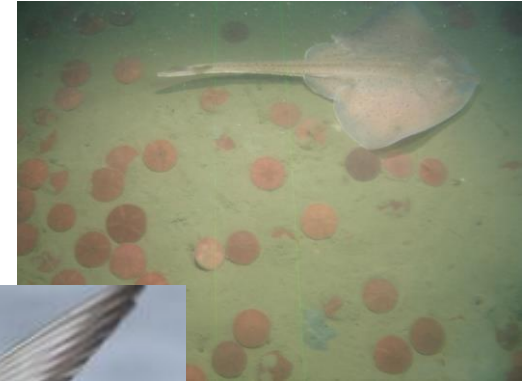


Scope & Purpose of Bay State Wind Environmental Program

- Program will be comprised of both site-specific surveys and desktop studies and analyses
- Proposed approach based on desktop evaluation of existing data
- Purpose
 - Support understanding of baseline conditions
 - Support siting and engineering design
 - Evaluation of potential impacts
 - Meet Federal, State and Local permitting and consultation requirements
- COP Survey Plan
 - Submitted to BOEM for review – February 27, 2017

Summary of Proposed Surveys and Assessments

- **Proposed Field Surveys**
 - Shallow Hazards and Geological Conditions Surveys
 - Geophysical and Geotechnical (G&G)
 - Marine Archeological Surveys
 - Coordinated with (G&G) surveys
 - Benthic Species and Habitat Surveys
 - Coordinated with G&G
 - Offshore Avian Surveys



Summary of Proposed Surveys and Assessments

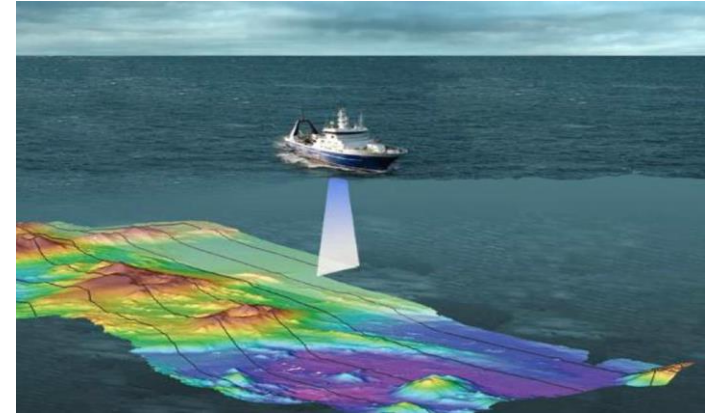
- **Other Surveys and Assessments**
 - Marine Mammals and Sea Turtles
 - To be supported by existing datasets and ongoing studies currently occurring the project area
 - Fisheries
 - Baseline condition to be assessed using existing datasets and ongoing studies currently occurring in the project area
 - Proposed G&G and Benthic Surveys will support identification of important habitat areas of concern
 - Targeted pre/post-construction surveys will be conducted as necessary in areas of particular interest/concern
 - Visual Impact Assessment
 - Inclusive of daytime and nighttime simulations
 - Navigational Risk Assessment
 - Commercial and Recreational





Survey Schedule Overview

- Lease Area Reconnaissance and FLIDAR Surveys: August – October 2016
 - HRG (Lease Area and FLIDAR)
 - Geotechnical (Lease Area)
- Cable Reconnaissance Surveys – May 2017
- Avian Surveys (Lease Area) – Mid-May through October 2017
- Benthic Surveys – Late summer/early Fall 2017



Agency and Stakeholder Outreach/Coordination

The Project recognizes the importance of stakeholder engagement throughout the project life cycle:

- Fisheries, Tribes, coastal communities, interest groups and marine users, environmental NGOs, State level working groups.
- Presentations at conferences and other local and regional events
- Range of formats to distribute information at key times in project

Engagement with lead State and Federal Agencies and departments:

- Inter-Agency Kick-off Meeting – February 2017
- Schedule of individual meetings with Federal and State agencies and departments to discuss survey protocols





Fisheries Outreach and Coordination

DONG Energy Fishing Industry Liaison Officer (FLO):
John Williamson, Sea Keeper Consulting

Main role and responsibility:

- Characterize the range of fisheries using the Bay State Wind lease and cable route corridor
- Predominant points of landing
- Evaluating economic and social dependence

Identify and engage with user groups:

- Commercial activities
- For-hire recreational
- Private anglers
- Develop a network for information-sharing

Additional co-ordination through:

- Fishing Industry Representatives (FIR) for G&G surveys
- Regular provision of information to industry and quayside





THANK YOU!

Project Team Contacts:

Pernille Hermansen

Permitting Project Manager

PEHER@dongenergy.dk

James Neveu

Bay State Wind

Environmental Manager

JANEV@dongenergy.com

Dr. Carolyn Heeps

Consultation Manager

XCHEE@dongenergy.com

John Williamson

Fisheries Liaison Officer (FLO)

john@seakeeper.net

