



BOEM's Offshore Renewable Energy Program

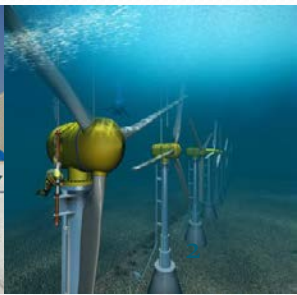
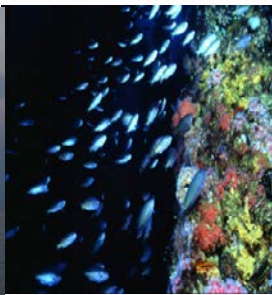
Maureen A. Bornholdt
Program Manager

Office of Renewable Energy Programs
Bureau of Ocean Energy Management



Bureau of Ocean Energy Management

Oversees development of the nation's oil and gas, renewable energy, and other mineral and energy resources on the Outer Continental Shelf



BOEM's Staged Offshore Wind Authorization Process

1 - Planning and Analysis

2 - Leasing

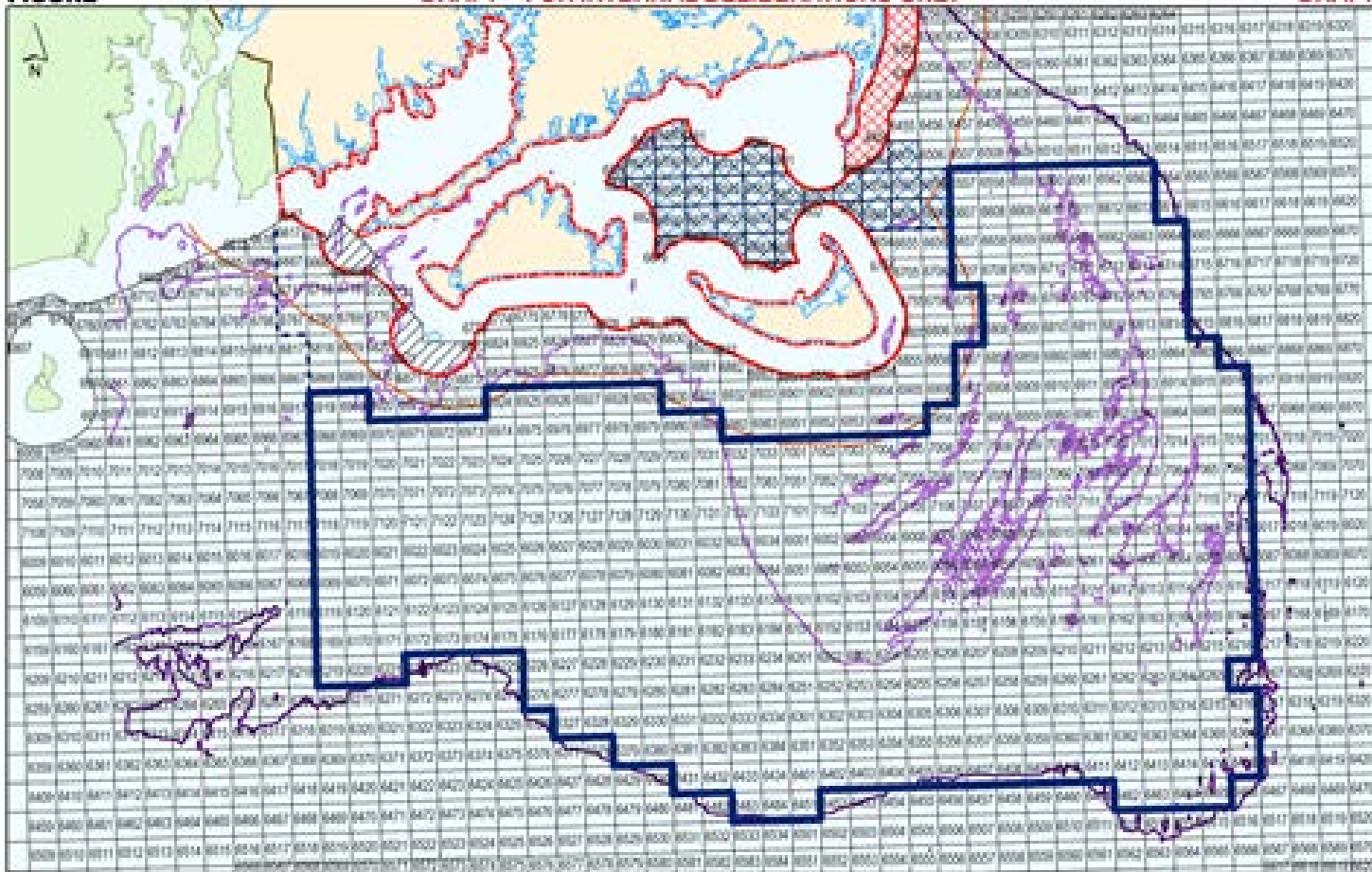
3 - Site Assessment

4 - Construction and Operations

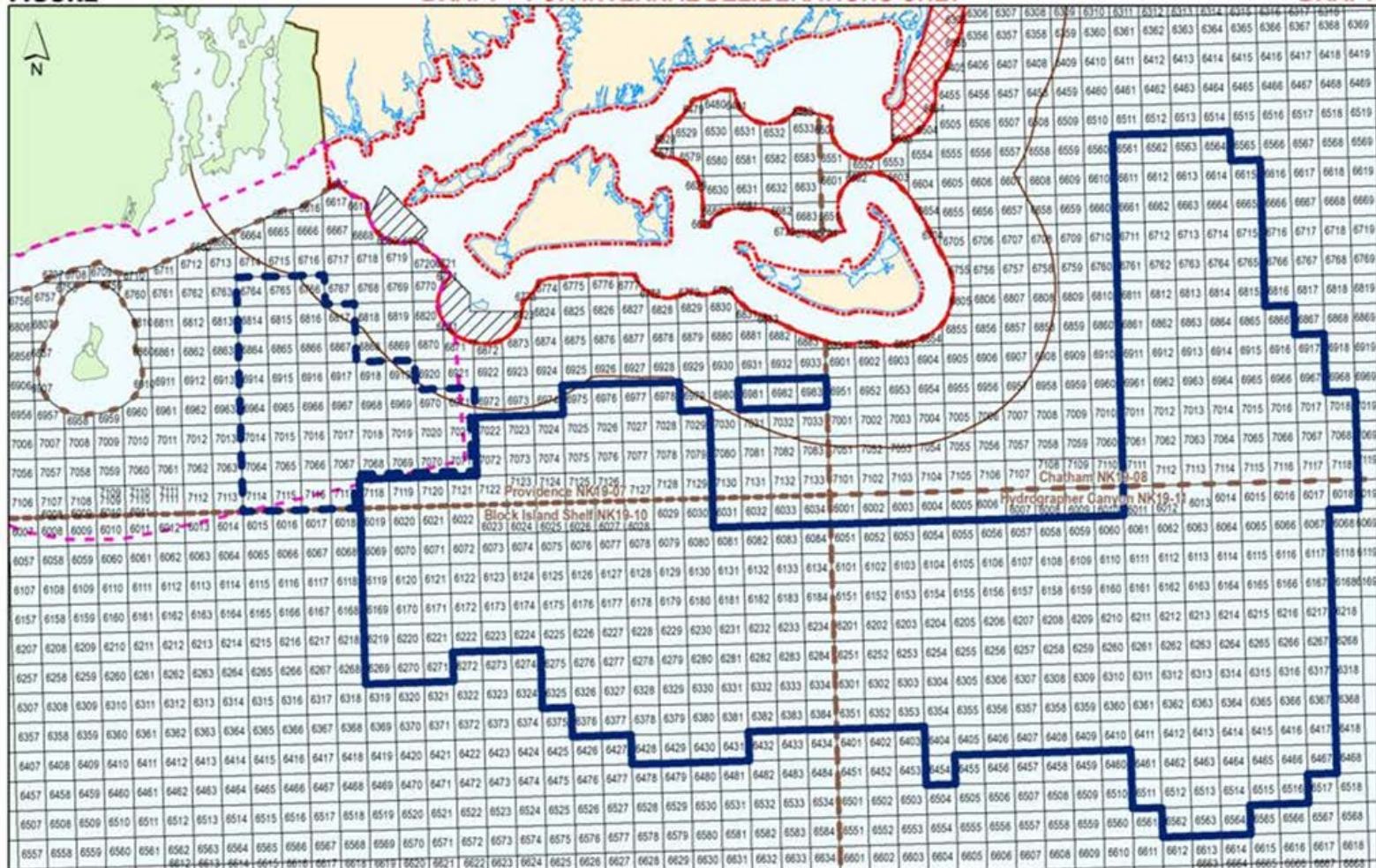
Massachusetts Planning & Analysis

- **Massachusetts Intergovernmental Renewable Energy Task Force** ([November 2009](#))
- **Request for Interest** ([December 2010](#); [March 2011](#))
- Reduction of eastern portion of RFI area ([May 2011](#))
- **Call for Information and Nominations & Notice of Intent to Prepare Environmental Assessment** ([February 2012](#))
- Area Identification of the **Massachusetts Wind Energy Area** ([May 2012](#))
- Notice of Availability of an **Environmental Assessment** ([November 2012](#))
- Department of Energy National Renewable Energy Laboratory **Final Delineation Report** of the Massachusetts WEA ([December 2013](#))

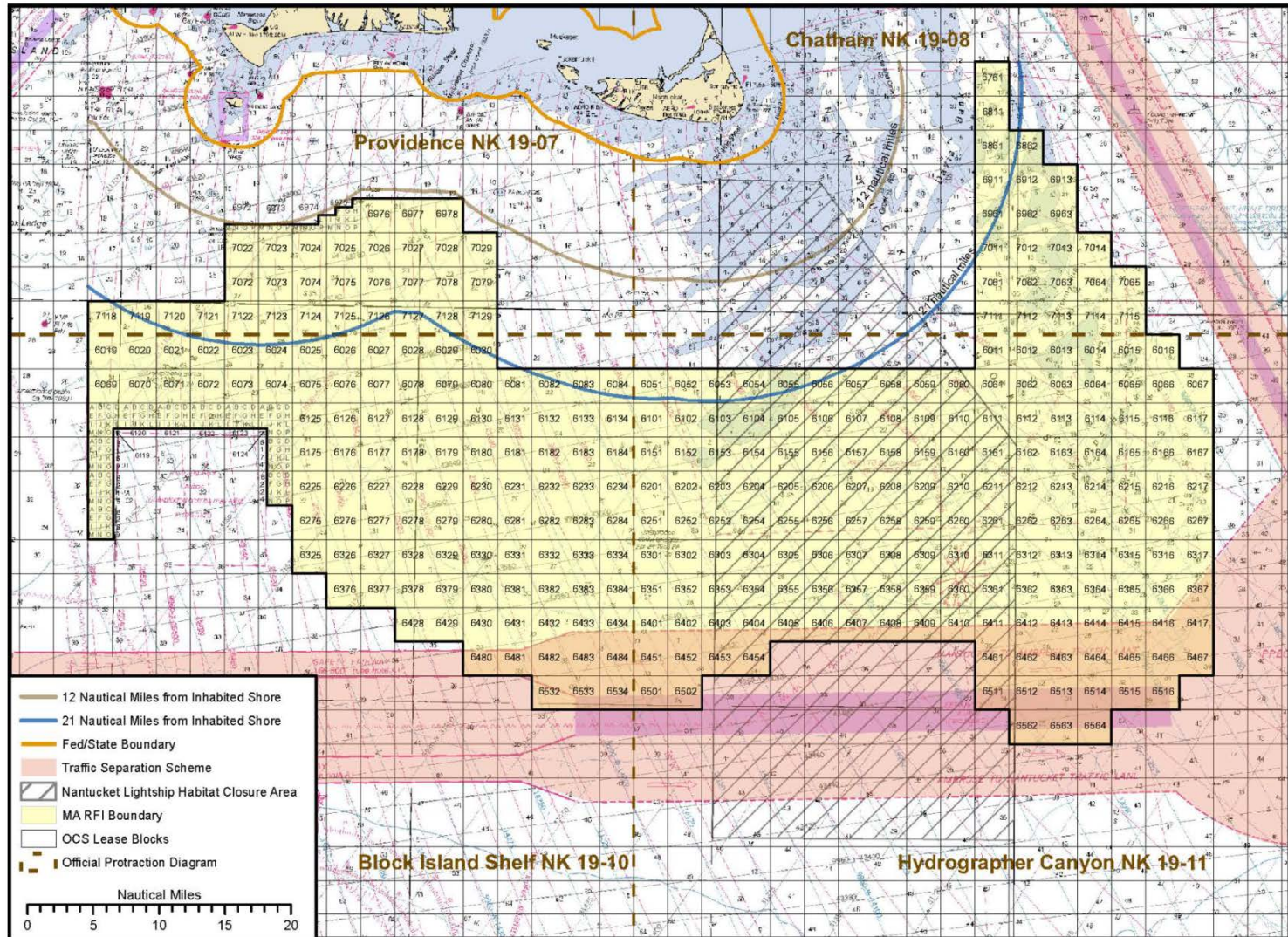
Massachusetts – Initial Planning Area



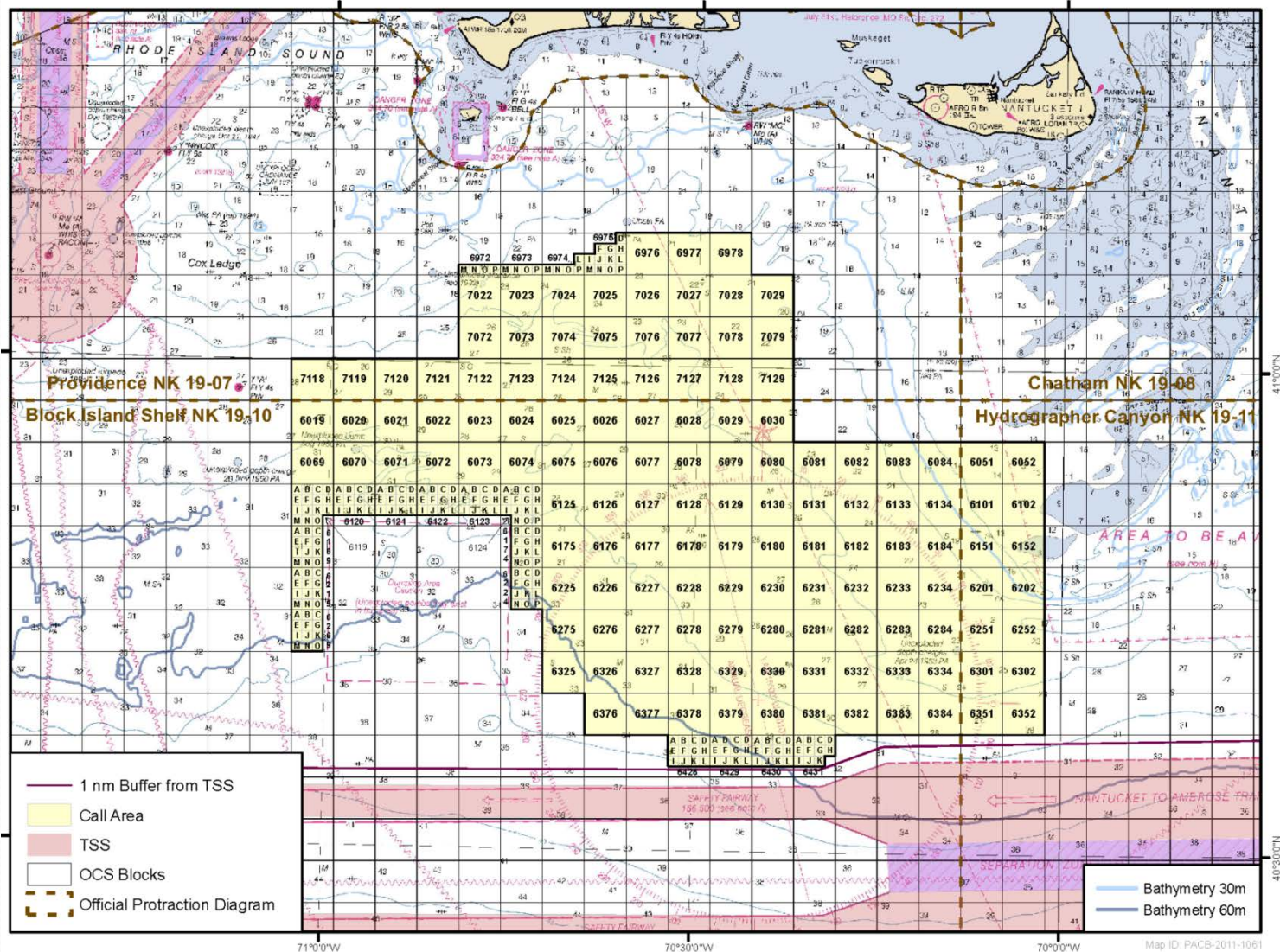
Massachusetts – Revised Area



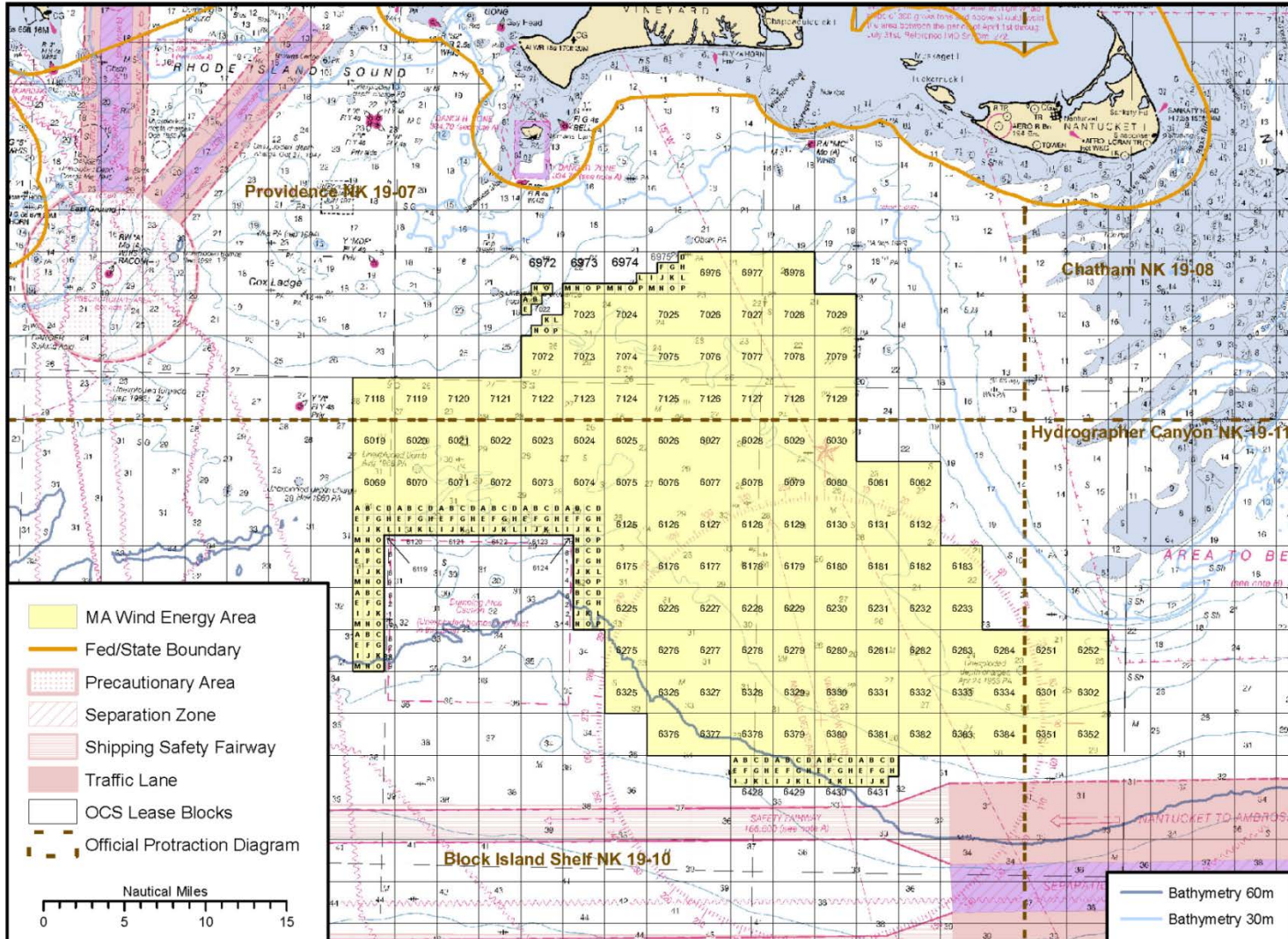
Massachusetts – RFI Area



Massachusetts – Call Area



Massachusetts – Area ID



Massachusetts Leasing

- Publication of the **Massachusetts Proposed Sale Notice** in the *Federal Register* on **June 18, 2014** for a 60-day public comment period which closes on **August 18, 2014**
- Simultaneously published **Notice of Availability of Revised Environmental Assessment** and **Finding of No Significant Impacts** in the *Federal Register*
- *More information:* <http://www.boem.gov/>
 - Renewable Energy Programs
 - State Activities
 - Massachusetts



Thank you!

Maureen A. Bornholdt
Maureen.Bornholdt@boem.gov
(703) 787-1300

Stage 1: Planning and Analysis

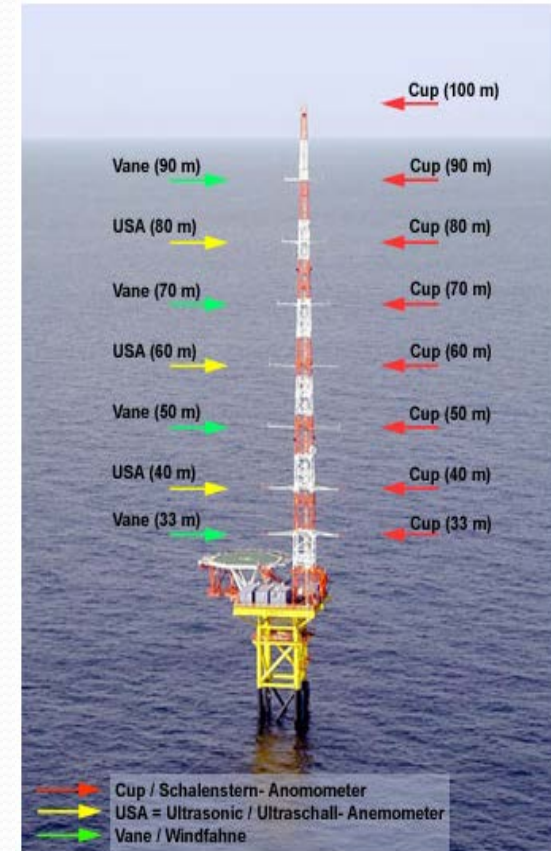
- Establish Intergovernmental Task Force, engage stakeholders
- Publish a Request for Information (RFI)/Call for Information and Nominations (Call)
- Announce Area Identification
- Conduct environmental compliance reviews

Stage 2: Leasing

- Publish leasing notices
 - Proposed Sale Notice
 - Final Sale Notices
- Issue Lease(s)
 - After environmental reviews are complete
 - Conveys right to submit plans for BOEM's approval
 - Hold lease sale (Competitive)

Stage 3: Site Characterization & Assessment

- Lessee conducts surveys in the lease area (**site characterization**)
- If lessee intends to install a meteorological tower or buoy, it must submit a Site Assessment Plan (SAP) (**site assessment**) that BOEM must approve
- Lessee has up to 5 years to conduct these activities



Stage 4: Commercial Development

- Lessee must submit a Construction and Operations Plan (COP) in the first five years of the lease for BOEM's approval
- COP provides details of the proposed project (turbine layout, size, etc.)
- Operations term is typically 25 years

