

# Status Update

*Unsolicited Commercial Lease Request  
from  
New York Power Authority (NYPA)*

September 26, 2013

Hyatt Regency Long Island

Hauppauge, NY

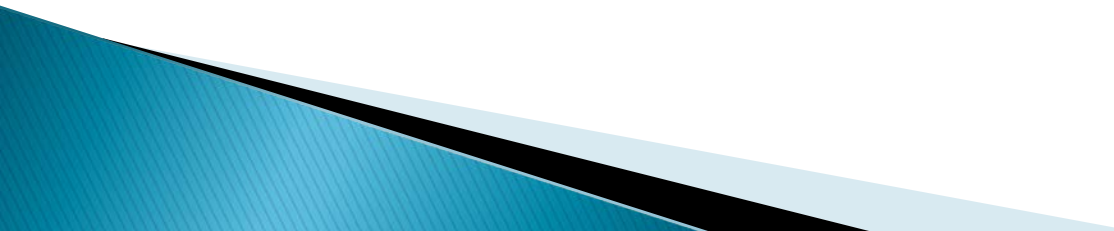
# Long Island-New York City Offshore Wind Collaborative

- The Long Island – New York City Offshore Wind Project is a public-private partnership being advanced by a collaborative that includes Long Island Power Authority, Consolidated Edison of New York and the New York Power Authority.





# NYPA's Proposed Project

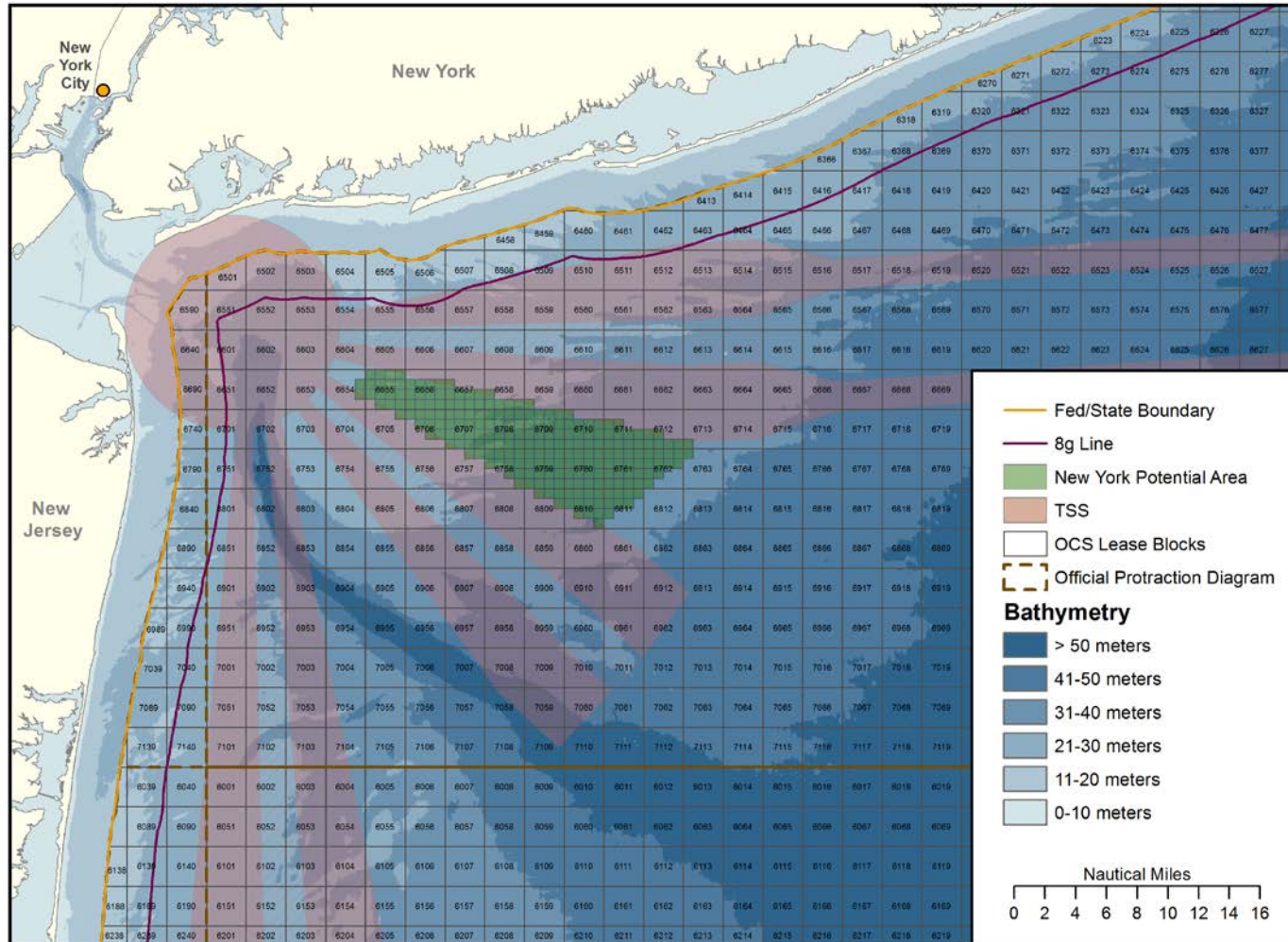
- Obtain a commercial lease leading to the construction of a large wind energy facility offshore Long Island
  - Initial 350 MW project, with room to expand up to 700 MW project
    - 97-194, 3.6 MW turbines or
    - 70-140, 5 MW turbines
  - 120 meter rotor diameter
  - 10 by 10 rotor diameter spacing between turbines (1.2 kilometers or 0.75 miles)
  - Foundations likely to be monopile, jacket and/or gravity based
  - The water depths range between 60 and 125 feet
  - 138 kV submarine cables to connect with LIPA's Far Rockaway substation and Con Edison's Corona substation.
- 

# Milestones

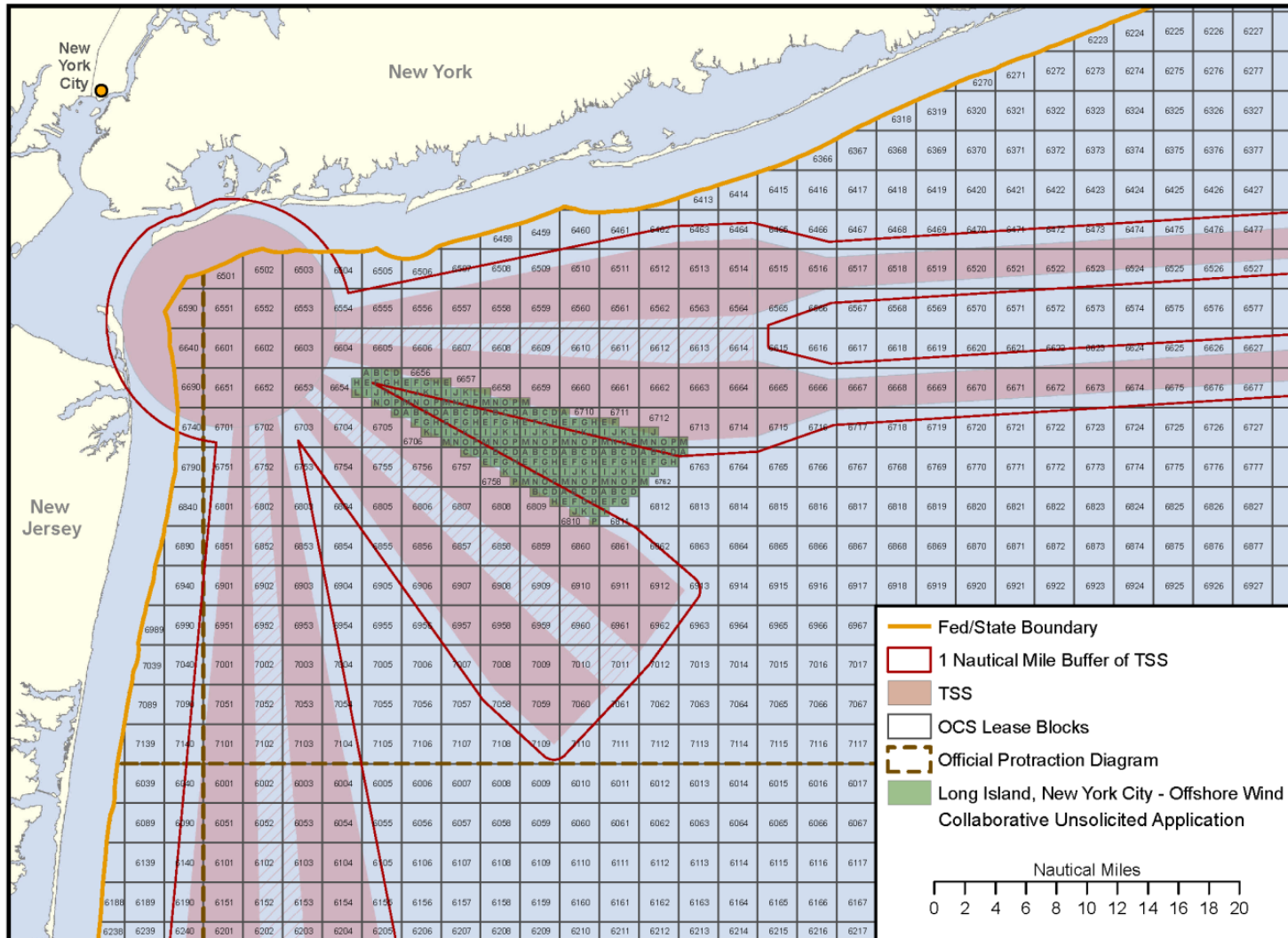
- NYPA submitted application to BOEM- September 2011
- NYPA amended application- June 2012
- BOEM published Request for Interest - January 4, 2013
  - 60 day comment period
  - 33 comments received
  - Two indications of competitive interest
- BOEM completed a Qualifications Review- July 2013
- Determination of competitive interest

# Area Initially Proposed by NYPA

Location is southwest of the Rockaway Peninsula, with its westerly most point approximately 14 nautical miles due south of Nassau County.

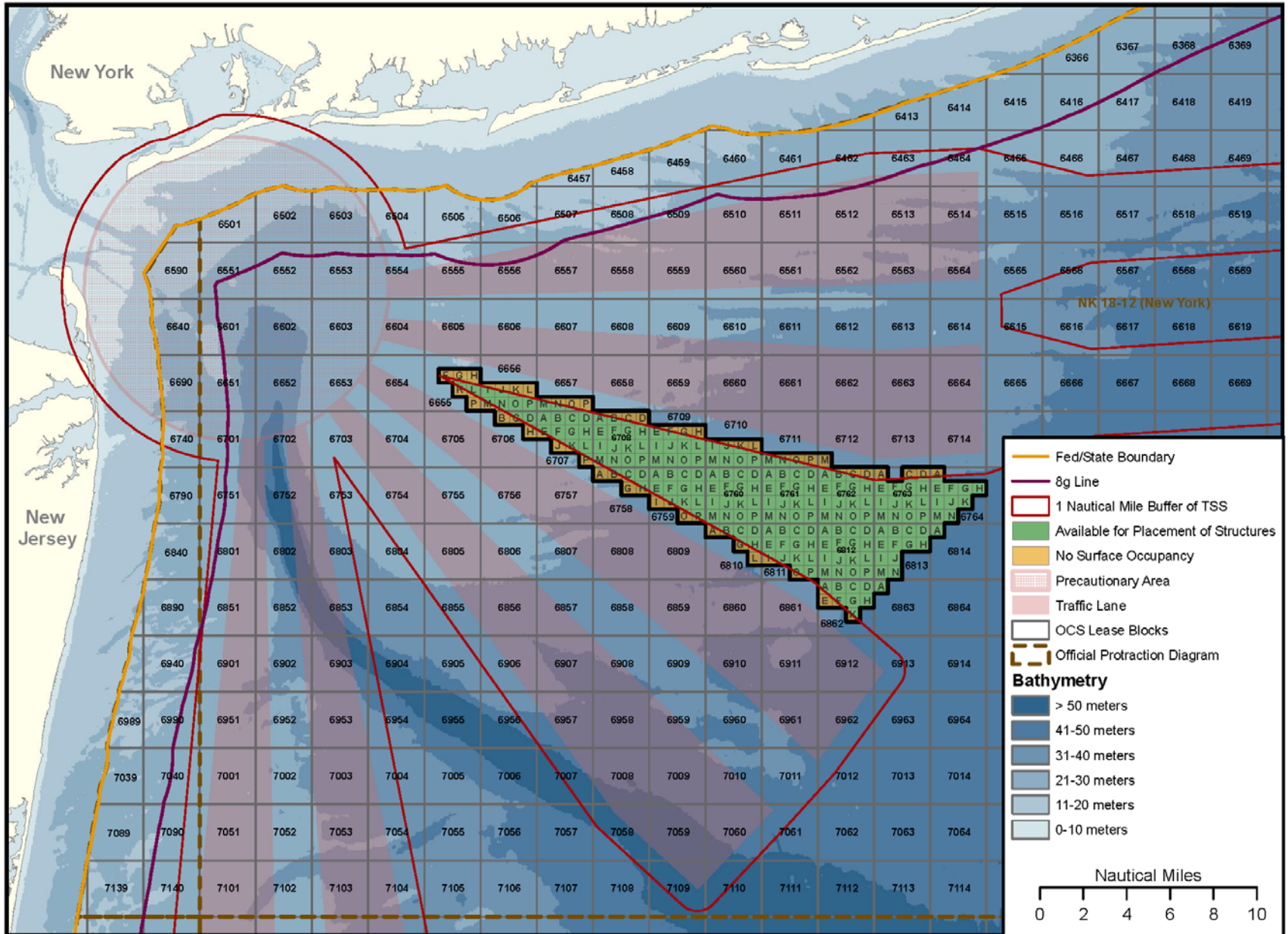


# 1 nautical mile buffer



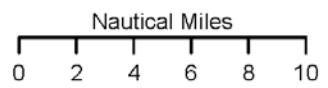


# New York Proposed Lease Area




- Fed/State Boundary
- 8g Line
- 1 Nautical Mile Buffer of TSS
- Available for Placement of Structures
- No Surface Occupancy
- Precautionary Area
- Traffic Lane
- OCS Lease Blocks
- Official Protraction Diagram

- Bathymetry**
- > 50 meters
  - 41-50 meters
  - 31-40 meters
  - 21-30 meters
  - 11-20 meters
  - 0-10 meters



# Summary of Comments on RFI

- ▶ Support for renewable energy
    - Meet the State's clean energy goals and foster reliability/diversity
    - Reduce the need for additional fossil fuel power plants
    - Combat climate change, improve air quality and human health
  - ▶ Economic considerations
    - Good for local business and boost the regional economy
  - ▶ Commercial fishing
    - Scallop beds, displacement concerns
  - ▶ Concerns raised regarding navigation and shipping impacts
  - ▶ Right whales
    - Mitigation measures
  - ▶ Viewshed impacts and historic properties
  - ▶ Baseline characterization information provided
- 



# Nominations of Competitive Interest

- Fishermen's Energy
- Energy Management, Inc.

*Next Step: Call/Area ID → Proposed Sale Notice*

# Two Pathways Moving Forward for NY

1. Develop a “Proposed Sale Notice” for the NYPA Proposed Lease Area
  2. Identify additional areas suitable for development and include them in a future “Call for Information and Nominations”
- ▶ BOEM and NY DOS will discuss these pathways in greater detail in the upcoming presentations

# Thank You!

Dr. Andrew Krueger  
Project Coordinator

Andrew.Krueger@boem.gov  
703-787-1554



**Montauk Point Lighthouse**  
Long Island, NY  
Built 1796