



BOEM BUREAU OF OCEAN
ENERGY MANAGEMENT

Gulf of Mexico Regional OCS Oil and Gas Draft Programmatic Environmental Impact Statement

(GOM Oil and Gas Draft Programmatic EIS)
Virtual Public Meetings

Gulf of Mexico Office
January 2025

Zoom Webinar – Live Interpretation

- American Sign Language interpretation will be provided throughout the course of the meeting.
- Active el canal de interpretación apropiado haciendo clic en el icono del globo terráqueo en la barra de tareas de Zoom ubicada en la parte inferior de su pantalla y seleccione su idioma.
- Si tiene dificultad con la traducción o con Zoom, por favor envíe un email o un mensaje a Jacob Burnstein (support@kearnswest.com).
- Kích hoạt kênh thông dịch thích hợp bằng cách nhấp vào biểu tượng quả địa cầu trên thanh tác vụ Thu phóng ở cuối màn hình và chọn ngôn ngữ của bạn.
- Nếu bạn gặp khó khăn với bản dịch hoặc với Zoom, vui lòng gửi email hoặc nhắn tin cho Jacob Burnstein (support@kearnswest.com).

Zoom Webinar – Technical Guidance

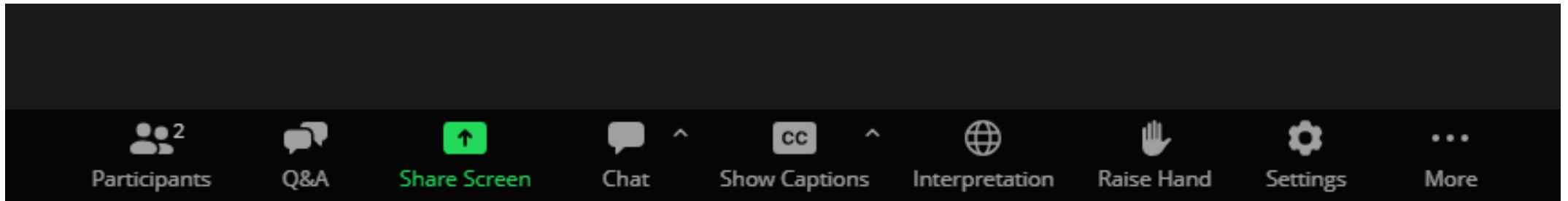
- If you encounter any technical difficulties within this meeting or the Zoom Webinar platform, please contact:
 - Technical Support, Jacob Burnstein, support@kearnswest.com
- For media inquiries, please contact:
 - BOEM Office of Communications
 - John Filostrat - john.filostrat@boem.gov
 - Hillary McKey - hillary.mckey@boem.gov

Please note, this meeting is being recorded.

Zoom Webinar – Live Interpretation

- American Sign Language interpretation will be provided throughout the course of the meeting.
- Active el canal de interpretación apropiado haciendo clic en el icono del globo terráqueo en la barra de tareas de Zoom ubicada en la parte inferior de su pantalla y seleccione su idioma.
- Si tiene dificultad con la traducción o con Zoom, por favor envíe un email o un mensaje a Jacob Burnstein (support@kearnswest.com).
- Kích hoạt kênh thông dịch thích hợp bằng cách nhấp vào biểu tượng quả địa cầu trên thanh tác vụ Thu phóng ở cuối màn hình và chọn ngôn ngữ của bạn.
- Nếu bạn gặp khó khăn với bản dịch hoặc với Zoom, vui lòng gửi email hoặc nhắn tin cho Jacob Burnstein (support@kearnswest.com).

Zoom Webinar – Closed Captioning



Closed captions can be turned on here

Meeting Objectives

- Provide information on the Gulf of Mexico (GOM) Regional Outer Continental Shelf (OCS) Oil and Gas Draft Programmatic Environmental Impact Statement (Programmatic EIS) for potential oil and gas leasing activities.
- Answer questions about the analysis, alternatives, and issues analyzed in the Programmatic EIS.
- Provide an opportunity for the public to provide comment on the Draft Programmatic EIS.

Agenda

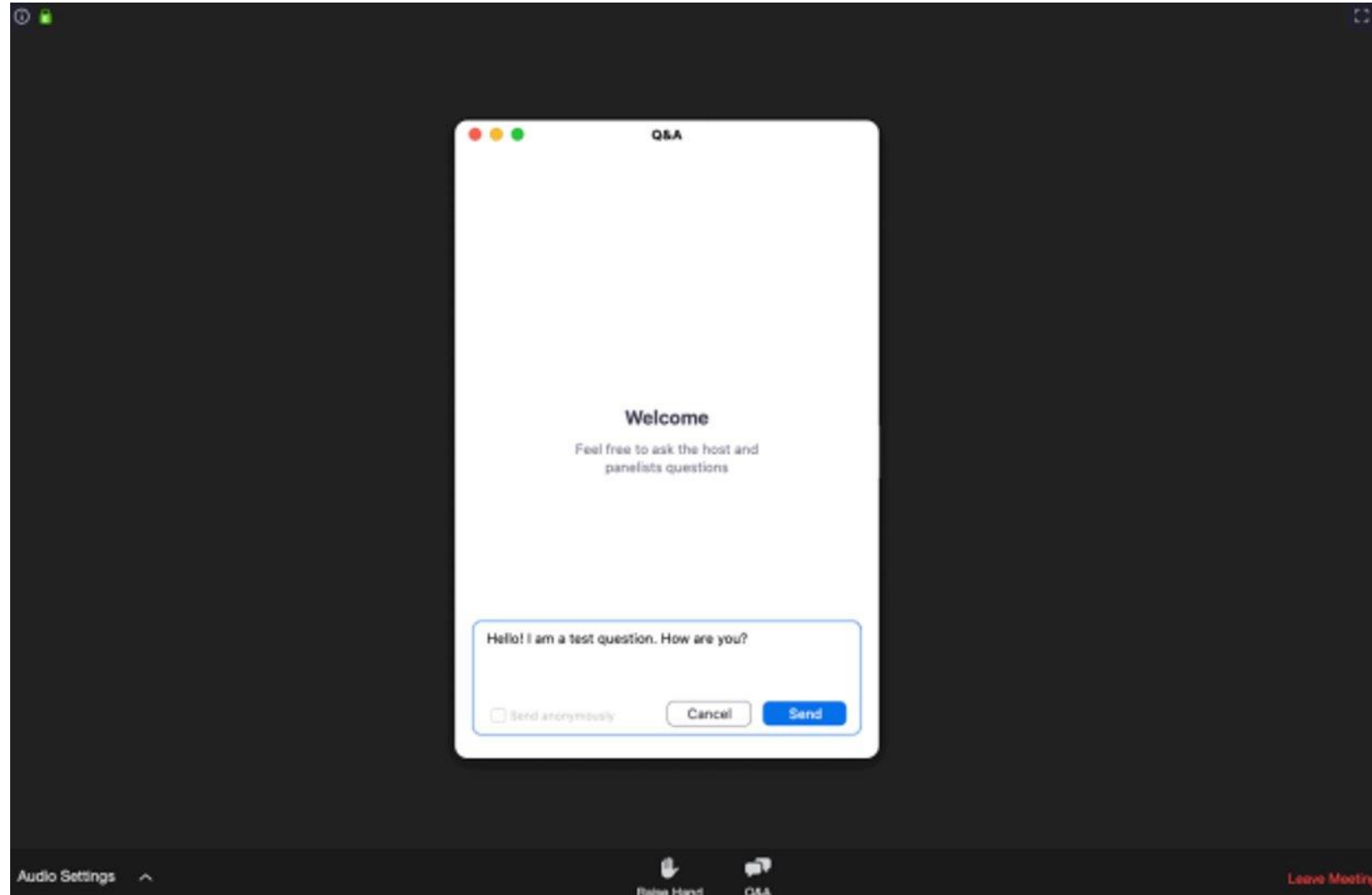
- Welcome
- Webinar Instructions and Guidance
- Opening Remarks
- Overview of the Gulf of Mexico Regional OCS Oil and Gas Draft Programmatic EIS
- Clarifying Questions
- Break
- Public Comment on the Draft Programmatic EIS
- Closing Remarks
- Adjourn

Guides for a Productive Meeting

- Honor the agenda
- **Participate respectfully.** We reserve the right to mute individuals who do not participate respectfully, use “colorful” language, or who use threatening or other inappropriate language.
- When you speak, provide your name and affiliation, speak clearly into the mic, and speak concisely.

Using Zoom Q&A

- Use the Q&A function during this *Clarifying Questions* portion of the meeting.
- If you have a question, select the Q&A icon.
- Type your questions in the blue rectangle and select *Send*.





BOEM BUREAU OF OCEAN
ENERGY MANAGEMENT

Welcome and Opening Remarks

**Dr. Jim Kendall, Regional Director
BOEM Gulf of Mexico Region**



BOEM BUREAU OF OCEAN
ENERGY MANAGEMENT

Gulf of Mexico Regional Oil and Gas Lease Sales:

Draft Programmatic Environmental Impact Statement

January 2025

Public Meeting

**In your own words, how would you describe the
Draft Gulf of Mexico Programmatic EIS?**

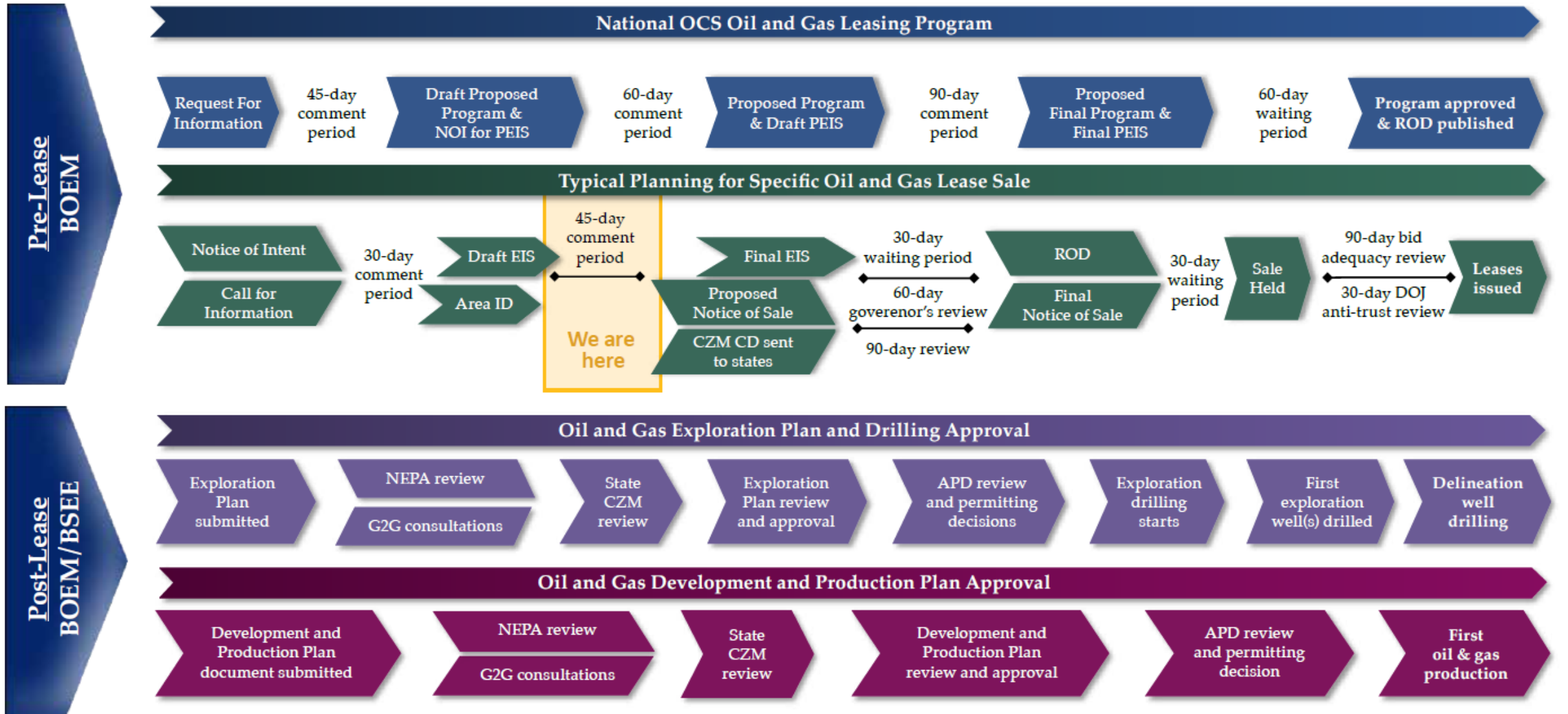
How will the GOM Programmatic EIS be used?

- Inform the decision for the first proposed Gulf of Mexico OCS oil and gas lease sale proposed in the 2024-2029 National OCS Oil and Gas Program (i.e., Lease Sale 262)
- Use and supplement as appropriate for decisions on future proposed Gulf of Mexico OCS oil and gas lease sales
- Use for tiering purposes for associated site- and activity-specific OCS oil- and gas-related activity approvals (typically EAs for plan approvals)
- Help inform extraordinary circumstance reviews to ensure categorical exclusions are used appropriately

How does the PEIS relate to the 2024-2029 National Oil and Gas Leasing Program?

Gulf of Mexico Regional OCS Oil and Gas Programmatic EIS

OCS Oil and Gas Leasing Process



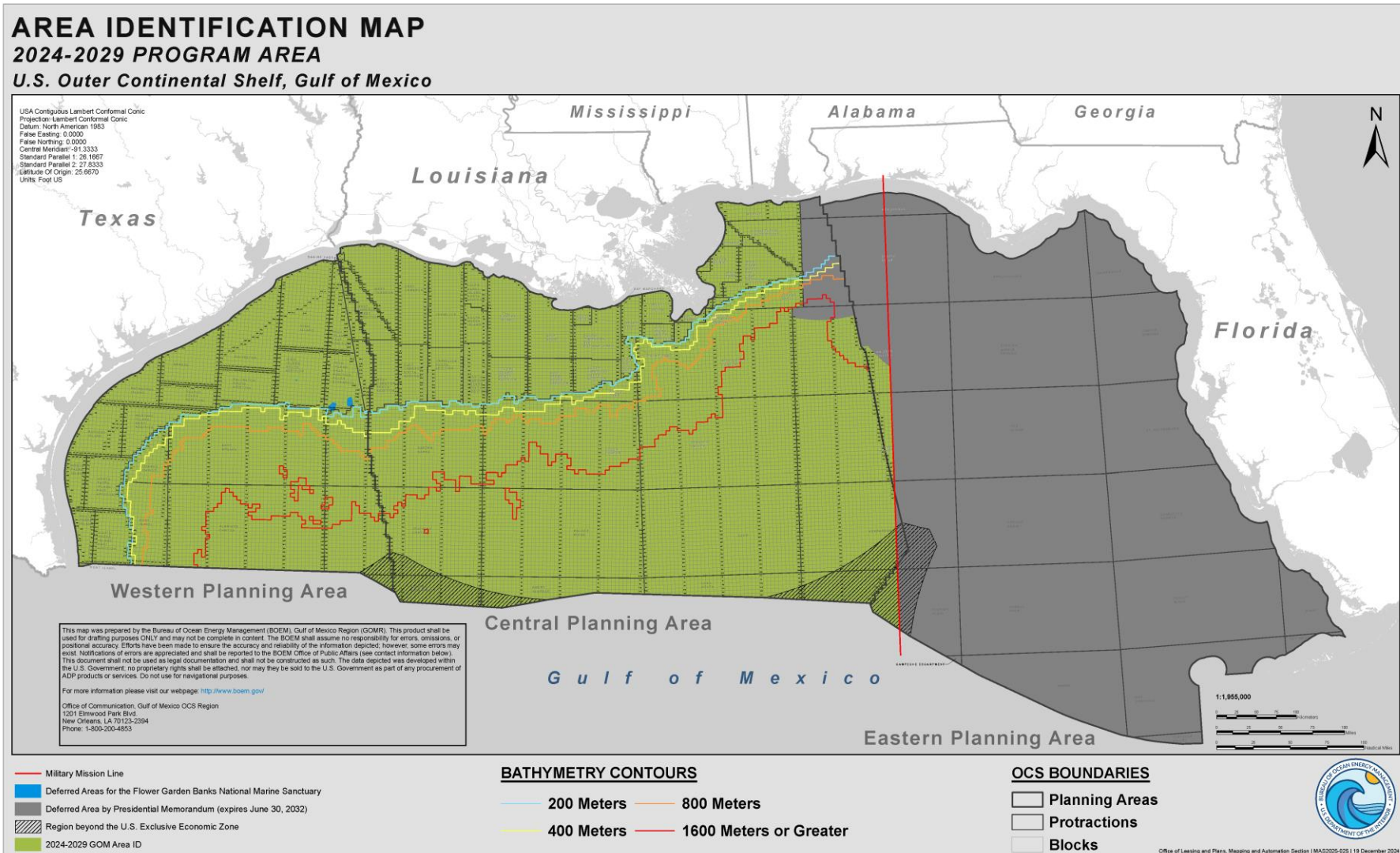
Key: APD = Application for Permit to Drill; BOEM = Bureau of Ocean Energy Management; BSEE = Bureau of Safety and Environmental Enforcement; CD = Consistency Determination; CZM = Coastal Zone Management; DOJ = Department of Justice; EIS = environmental impact statement; G2G = government-to-government; NEPA = National Environmental Policy Act; NOI = Notice of Intent; OCS = Outer Continental Shelf; PEIS = programmatic environmental impact statement; ROD = Record of Decision

Notes: Publishing the Draft and Final EISs must occur after the Area ID and prior to the issuance of the ROD/Final Notice of Sale. The ROD and Final Notice of Sale publish simultaneously. Usually, the Proposed Notice of Sale and CDs are finalized after the Draft EIS is issued but at least 90 days prior to Final Notice of Sale/ROD signature.

**What is the proposed Federal action
BOEM is analyzing in the PEIS?**

**What is the purpose of that action and
why is it needed?**

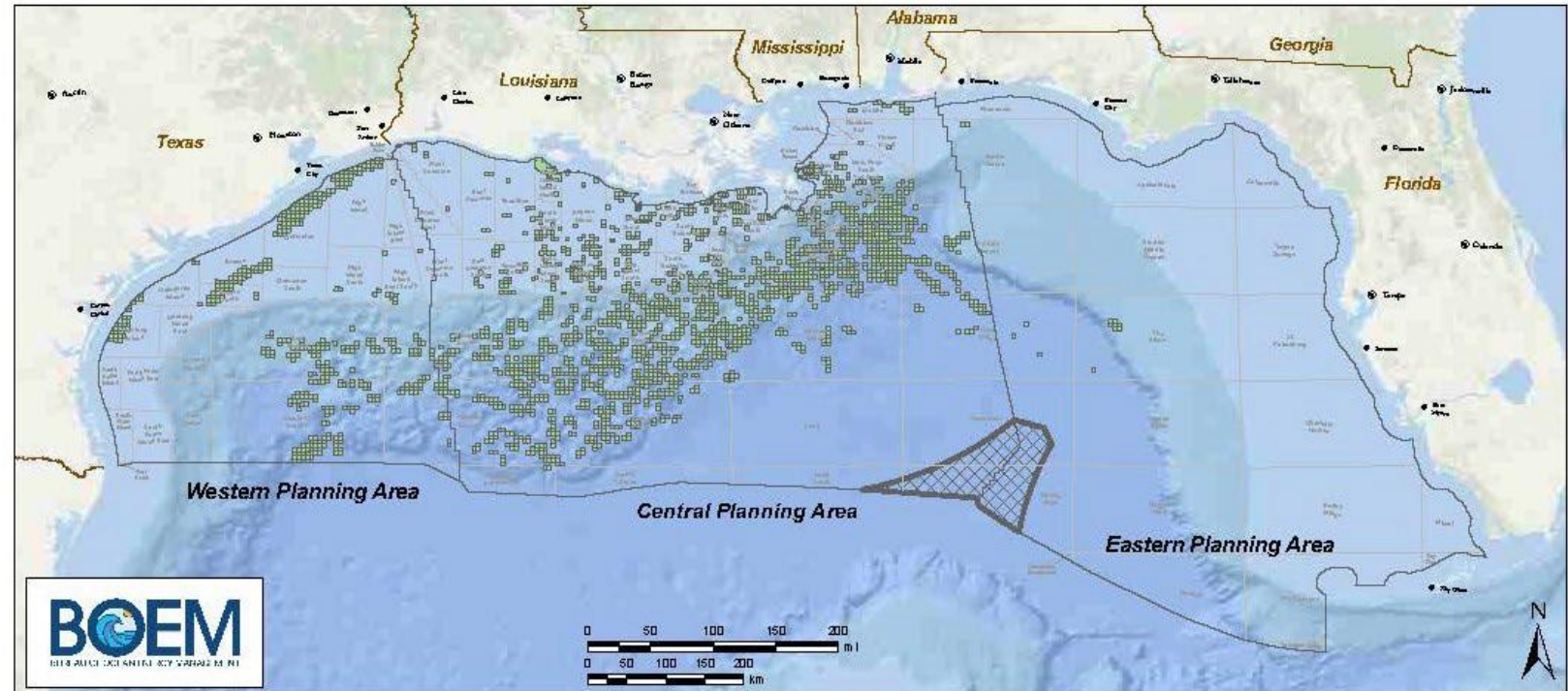
Project Overview



What Alternatives to the Proposed Action did BOEM evaluate?

Alternative A – No Action

- Alternative A (No Action) is the cancellation of a single proposed Gulf of Mexico OCS oil and gas lease sale.
- Baseline conditions and ongoing activities would continue

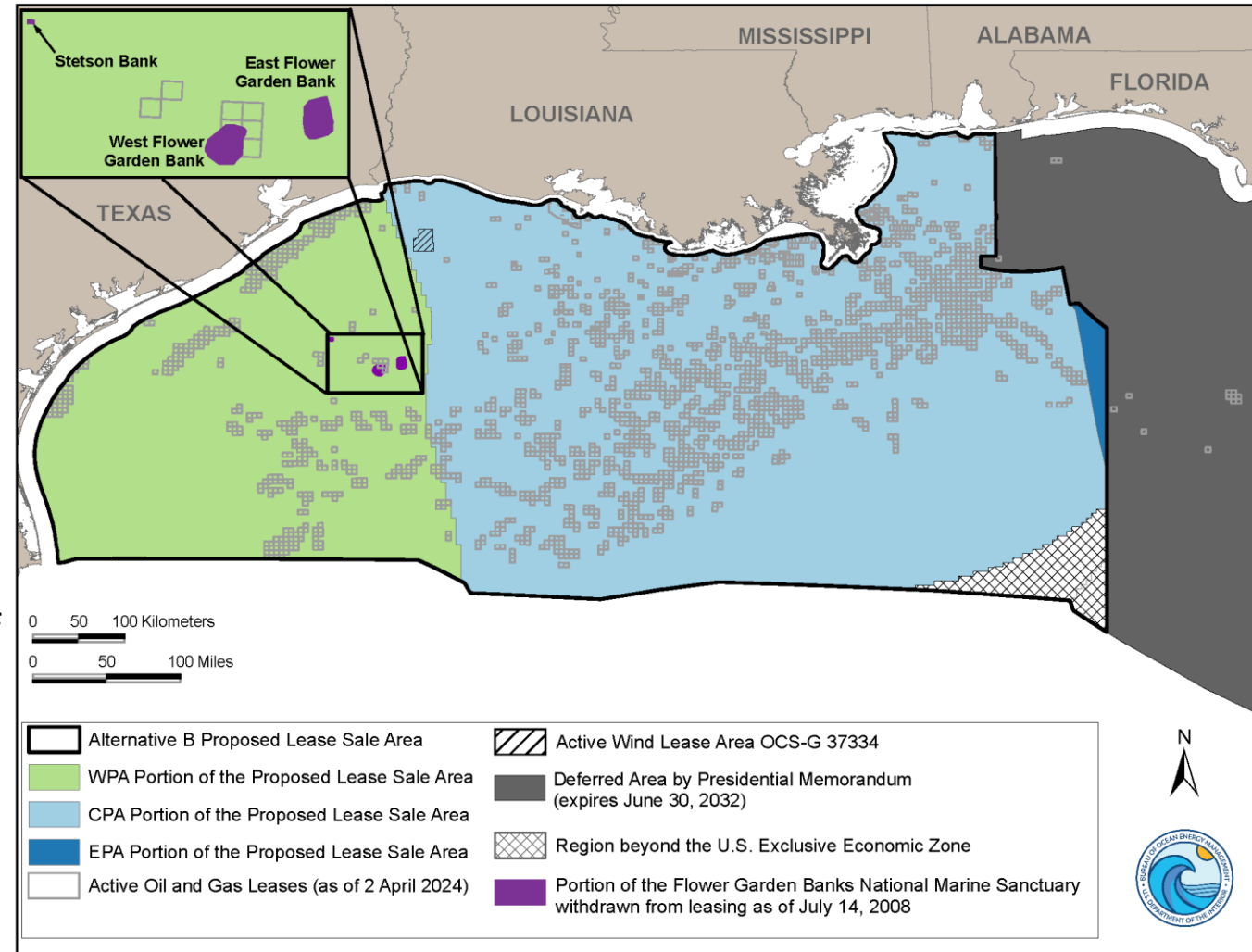


Active Leases as of May 1, 2024

Alternative B

Alternative B (the Proposed Action) would allow for a proposed GOM oil and gas lease sale within the WPA, CPA, and EPA lease sale areas for oil and gas operations, with the following exceptions:

- whole and portions of blocks currently under Presidential Withdrawal;
- blocks that are adjacent to or beyond the United States' Exclusive Economic Zone (Extended Continental Shelf Area); and
- whole and partial blocks within the boundaries of the Flower Garden Banks National Marine Sanctuary as of the July 2008 Memorandum on Withdrawal of Certain Areas of U.S. OCS from Leasing Disposition.



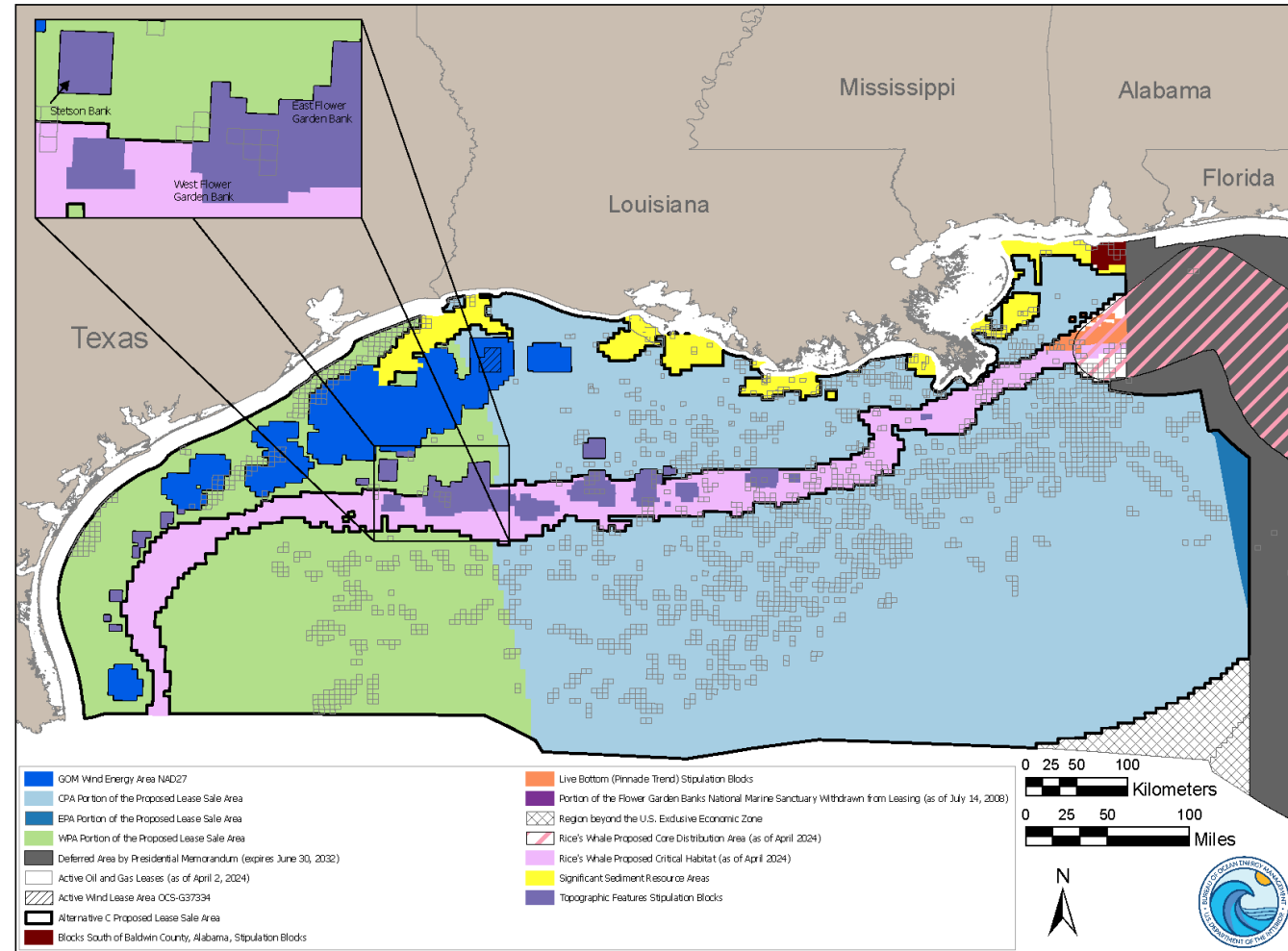
Office of Leasing and Plans - Mapping and Automation Section | MAS2025-022 | 19 December 2024

Alternative C

Alternative C (Preferred Alternative) would provide a targeted lease sale area of more than 60 million acres to satisfy the IRA offshore wind leasing requirements.

Preliminary Exclusion Areas include

- all exclusions applicable to Alternative B;
- whole and partial blocks from the
 - Topographic Features Stipulation;
 - Live Bottom (Pinnacle Trend) Stipulation; and
 - Blocks South of Baldwin County, Alabama Stipulation;
- Significant Sediment Resource Areas;
- Wind Energy Area options as of April 2024, final Wind Energy Areas, and Wind Energy Lease(s) OCS-G 37334;
- whole and partial blocks within the Rice's whale Core Distribution Area as of April 2024; and
- whole and partial blocks within the Rice's whale proposed critical habitat.



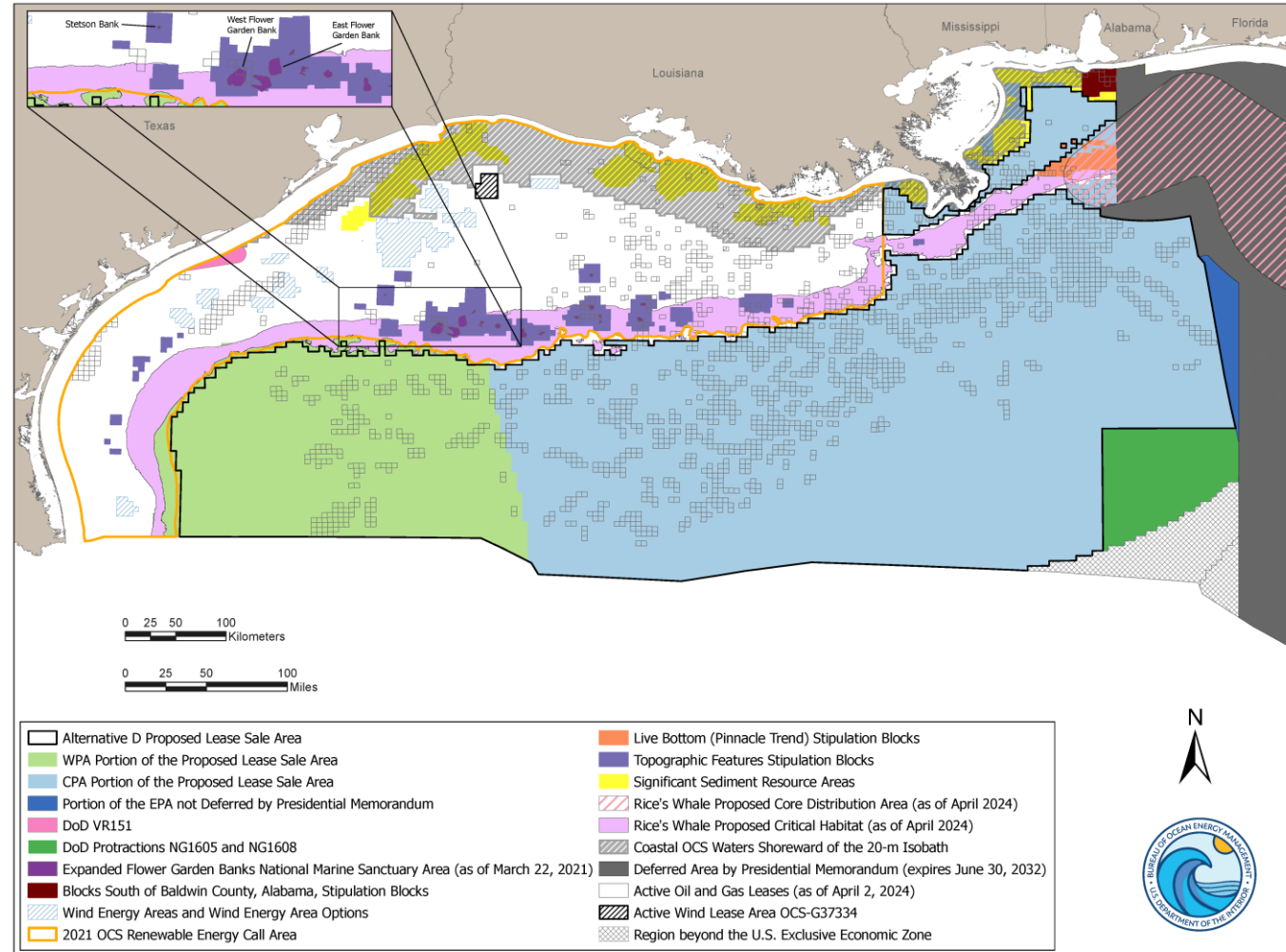
Office of Leasing and Plans, Mapping and Automation Section | MMS-05-0231 | 20 December 2024

Alternative D

Alternative D does not provide for a lease sale area of at least 60 million acres. Therefore, this alternative would not on its own satisfy the IRA offshore wind leasing requirements.

Preliminary Exclusions Areas include

- All exclusions applicable to Alternative C;
- whole and partial blocks in the EPA;
- Gulf of Mexico Wind Leasing Call Area;
- whole and partial blocks within the coastal OCS waters shoreward of the 20-m isobath;
- whole and partial blocks around the 2021 Expanded Flower Garden Banks NMS; and
- whole and partial blocks identified as Dept. of Defense Mission incompatibility areas.



Office of Leasing and Plans-Mapping and Automation Section | MAS2025-024 | 19 December 2024

What were the key oil and gas-related activities on the outer continental shelf of the Gulf of Mexico analyzed?

Impact Producing Factors

**Routine OCS
Oil- and Gas-
Related Activities**

**Accidental OCS
Oil- and Gas-
Related Activities**

**Cumulative
Activities**

What resources were analyzed?

Resources Analyzed

**Physical
Resources**

**Biological
Resources**

**Social
Resources**


What were the key findings regarding potential impacts?













Summary of Impacts

- Impacts under Alternative A were determined to be None or Negligible for all resources except economic factors.
 - Minor to Moderate Adverse impacts were determined for Economic Factors
- Up to Major Adverse impacts
 - Air Quality (formaldehyde, Alternatives B-D)
 - Benthic Communities and Habitats, Marine Mammals, and Archaeological Resources (without BOEM mitigating measures, routine and/or accidental, Alternatives B-D)
- Up to Moderate Adverse impacts
 - Water Quality, Coastal Communities and Habitats, Birds, and Social Factors (routine and/or accidental, Alternatives B-D)
 - Fishes and Invertebrates, Marine Mammals, and Sea Turtles (without BOEM mitigating measures, routine and/or accidental, Alternatives B-D)
 - Marine Mammals (with BOEM mitigating measures, accidental, Alternatives B-D)
- Impacts to all other resources and cases were found to be Minor Adverse, Negligible, or Beneficial

Example – Impacts to Biological Resources

Benthic Communities and Habitats and Protected Corals



Area of Impact	Alternative A	Alternative B	Alternative C	Alternative D
Routine Impacts without BOEM Protective Measures <i>in leased areas</i>	none	 Negligible adverse to major adverse	 Negligible adverse to major adverse	 Negligible adverse to major adverse
Routine Impacts <i>with</i> BOEM Protective Measures <i>in leased areas</i>	none	 Negligible adverse to minor adverse	 Negligible adverse to minor adverse	 Negligible adverse to minor adverse
Routine Impacts <i>in excluded areas</i>	none	none	none	none
Accidental Impacts <i>in leased areas</i>	none	 Negligible adverse to major adverse	 Negligible adverse to major adverse	 Negligible adverse to major adverse
Accidental Impacts <i>in excluded areas</i> ¹	none	 Negligible adverse to major adverse	 Negligible adverse to major adverse	 Negligible adverse to major adverse

1. Oil spills and spill response could occur in or move through excluded areas.

What types of mitigation measures were analyzed?

The background of the slide features a dark blue gradient with several light blue, wavy, horizontal lines that create a sense of movement and depth.

Mitigation Measures

- Military Areas Stipulation;
- Evacuation Stipulation;
- Coordination Stipulation;
- Protected Species Stipulation;
- Topographic Features Stipulation;
- United Nations Convention on the Law of the Sea Royalty Payment Stipulation;
- Stipulation on the Agreement Between the United States of America and the United Mexican States Concerning Transboundary Hydrocarbon Reservoirs in the Gulf of Mexico (Transboundary Stipulation);
- Live Bottom (Pinnacle Trend) Stipulation;
- Blocks South of Baldwin County, Alabama, Stipulation;
- Restrictions due to Rights-of-Use and Easements (RUE) for Floating Production Facilities Stipulation; and
- Stipulation for Royalties on All Produced Gas.

**How does OCS oil and gas leasing impact
greenhouse gas (GHG) emissions and social cost of carbon?**

Issues of Programmatic Concern – Greenhouse Gas Emissions

- In total, the life cycle analysis of domestically produced or consumed energy shows that selection of the proposed action results in only small changes in emissions from those under the No Action Alternative (Alternative A).
- When considering the impact of changes in foreign oil production and consumption energy markets, the proposed action represents an increase in global GHG emissions.
- The proposed action is estimated to result in higher global social costs than the No Action Alternative for all SC-GHG discount rates and activity levels.

How does BOEM make sure there is enough space for the different uses of the OCS?

Issues of Programmatic Concern – Space-Use Conflicts Between BOEM Program Areas

- Offshore oil and gas, marine mineral use, wind energy development, and potential carbon sequestration projects may have overlapping space needs on the OCS.
 - Under Alternative B, blocks containing SSRAs would be available for lease but excluded under Alternatives C and D.
 - BOEM uses ITLs and NTLs to mitigate; BSEE might not approve decommissioning in place requests.
 - Under Alternative B, areas identified for wind energy development would be available but excluded under Alternatives C and D.
 - WEA identification marine spatial planning model included oil and gas infrastructure distancing.
 - Under Alternatives B and C, areas that may support carbon sequestration would be available for lease, but many may be excluded under Alternative D.
 - Proposed carbon sequestration regulations are currently in development, and mitigations for space-use conflicts can be developed.

BOEM identified decommissioning as an Issue of Programmatic Concern. Why is that?

Issues of Programmatic Concern – Decommissioning

- The Bureau of Safety and Environmental Enforcement (BSEE) oversees the decommissioning and removal of infrastructure from the OCS
- The Government Accountability Office (GAO) has recently reviewed BSEE’s management of oil and gas pipelines (2021) and oversight of decommissioning deadlines (2024)
- The GAO made several recommendations:
 - develop, finalize, and implement updated pipeline regulations
 - proactively oversee and enforce decommissioning deadlines;
 - develop, finalize, and implement changes to decommissioning regulations and guidance;
 - develop, finalize, and implement changes to financial assurance regulations and procedures
 - assess and revise qualification procedures
- DOI has agreed with all GAO recommendations and is implementing them

How does BOEM interact with Tribal governments or other Federal or State agencies in this process?

The background of the slide features a dark blue gradient with several light blue, wavy lines that resemble ocean waves, flowing from the bottom left towards the top right.

Consultations

**Federally
Recognized Tribes**

**Endangered
Species Act**

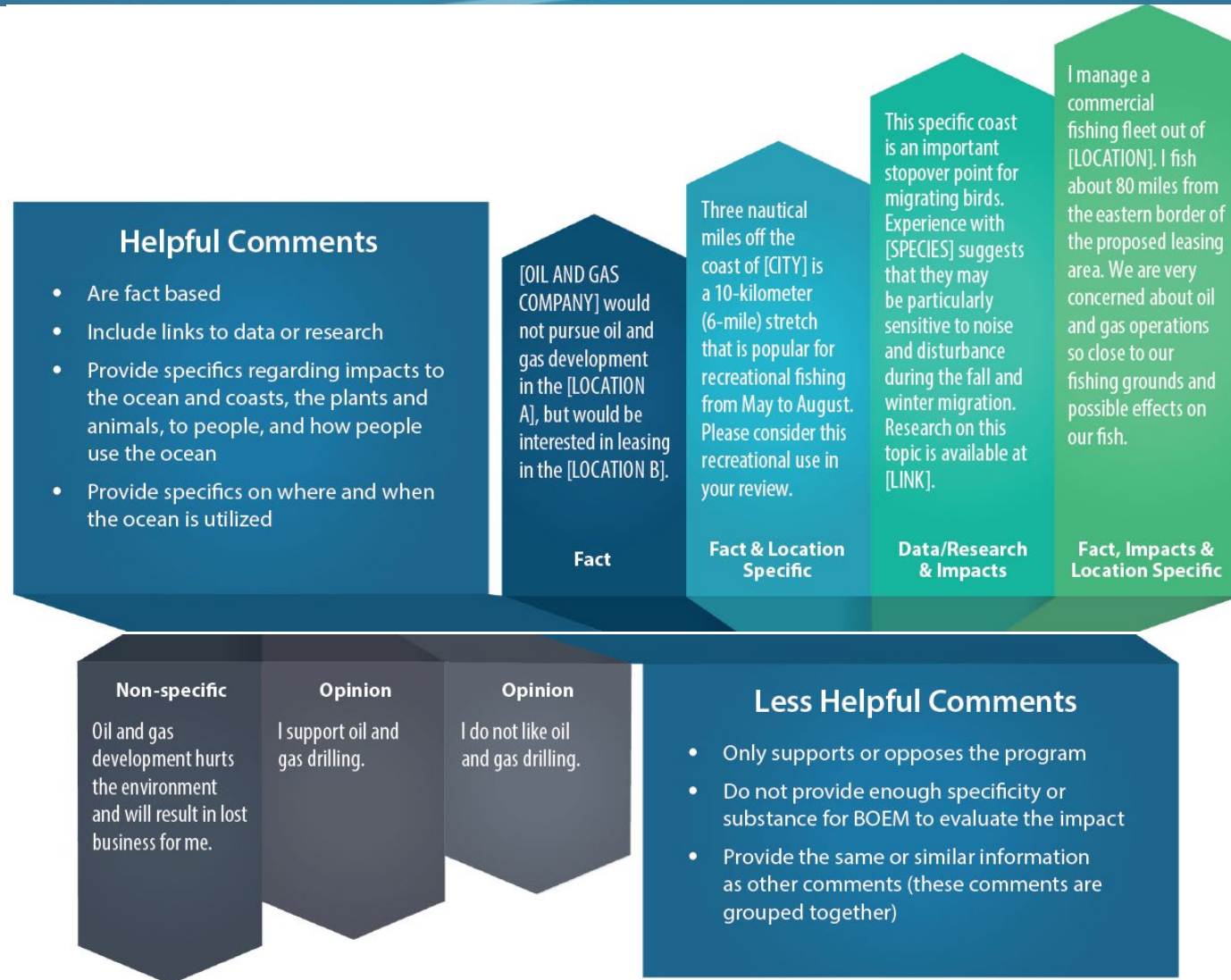
**Coastal Zone
Management Act**

**Magnuson-Stevens Fishery
Conservation and
Management Act**

**National Historic
Preservation Act
(Section 106)**

**How are public comments taken into consideration?
How are they factored into the evaluation and revision of the
Draft PEIS?**

Tips to Provide Helpful Comments



If people reviewing the PEIS see key considerations missing in the PEIS analysis, what course of action should they take?

The background of the slide features a dark blue gradient with several light blue, wavy, horizontal lines that create a sense of movement and depth.

How to Provide Comments

- **Written Comments**

- Visit [regulations.gov](https://www.regulations.gov) and under the search tab, type in Docket ID: **BOEM-2023-0046-0025** to submit written and comments and view other comments
- Note: this is the Agency Preferred Option

- **Oral Comments**

- During the Virtual Public Meetings, BOEM will provide an opportunity to present oral testimony. Three Virtual Public Meetings will be held:
 - January 14th, 1pm CST
 - January 15th, 9am CST
 - January 16th, 6pm CST



BOEM.gov





BOEM BUREAU OF OCEAN
ENERGY MANAGEMENT

Clarifying Questions

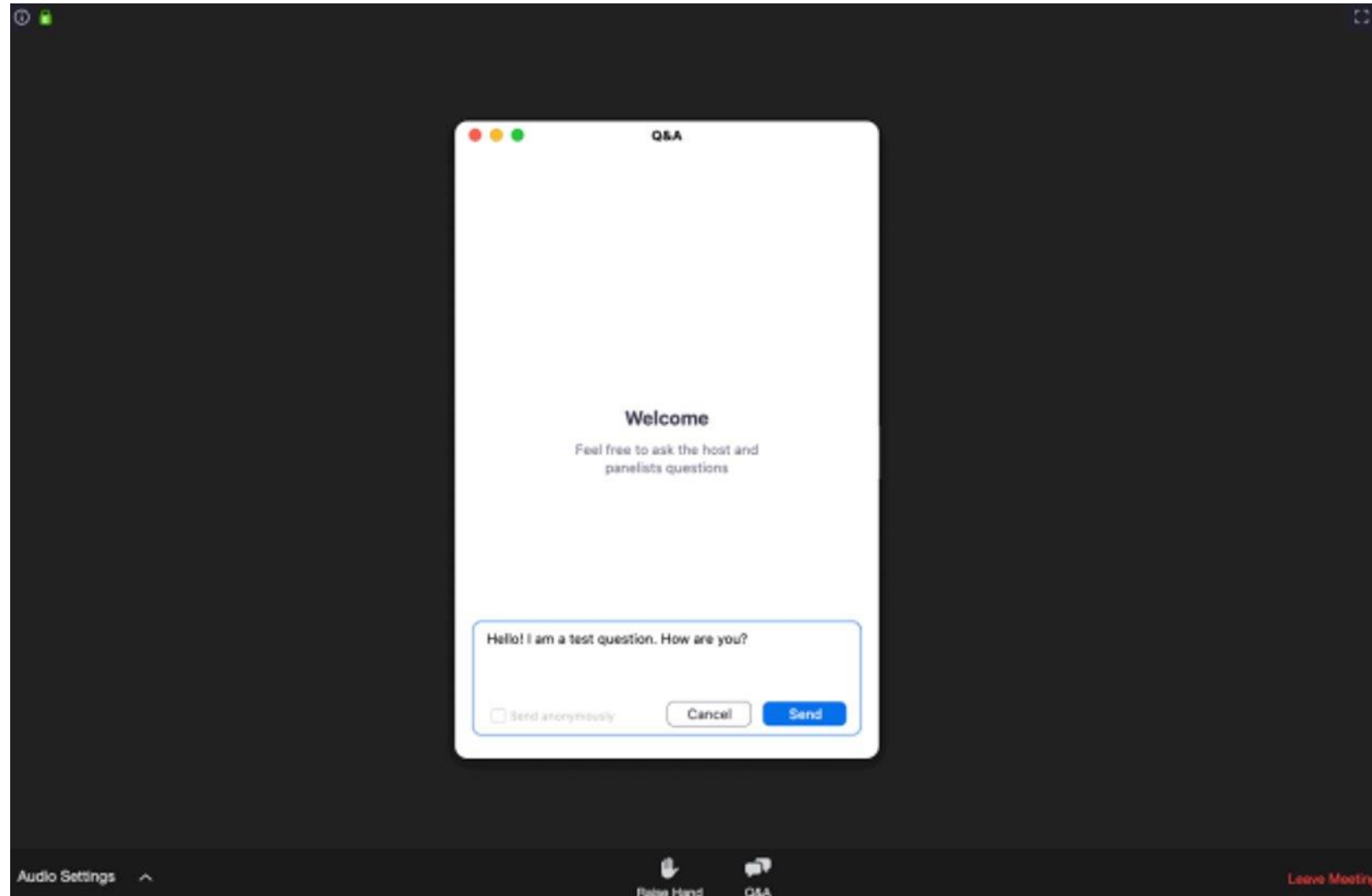
Clarifying Questions

- The Q&A function is open for questions related to the Draft Programmatic EIS.
- BOEM will respond to questions relating to the Draft Programmatic EIS. All other questions will be noted by BOEM but not responded to as a part of this meeting.

Public comment on the Draft Programmatic EIS will be received immediately following this Q&A session.

Using Zoom Q&A

- Use the Q&A function during this *Clarifying Questions* portion of the meeting.
- If you have a question, select the *Q&A* icon.
- Type your questions in the blue rectangle and select *Send*.
- For those on the phone, dial *9 to raise your hand. The moderator will call on you by announcing the last four digits of your phone number and invite you to unmute.



We Will Be Right Back

We are on a quick break and will return to the meeting at
7:00 CT/8:00 ET




BOEM BUREAU OF OCEAN
ENERGY MANAGEMENT

Public Comment Opportunity


Comments on the Gulf of Mexico Regional OCS
Oil and Gas Draft Programmatic EIS

In-Meeting Public Comment Process

- Members of the public will be muted throughout the meeting.
- To provide comments, use the Raise Hand function  located on the bottom of the Zoom taskbar.
- When it is your turn, the facilitator will call your name. You will be unmuted to provide your oral comment.
- We ask that you limit your comments to the allotted time.
- Provide your name and affiliation before speaking.
- For phone-only participants, press *9 to “raise your hand” and enter the queue, and *6 to unmute yourself when prompted.
- If you encounter technical issues, chat Technical Support, Jacob Burnstein.
- If you leave and return, or lower and re-raise your hand, you will be placed at the end of the queue.

Public Comment – Draft Programmatic EIS

- **Meeting Guidelines**

- To provide oral comment, click on the “**Raise Hand**” button  or press *9 on your phone. Everyone will have **3 minutes**.
- The moderator will **call on you** when it is your time to speak and will unmute your line.
- **Please be respectful.** Threatening, profane, or other inappropriate language will not be permitted. Disruptive participants will be removed.
- For technical problems, please send a message to **Technical Support** via the chat box.
- Para la traducción al español, haga clic en el ícono del globo terráqueo en la barra de tareas de Zoom.
- Để xem bản dịch bằng tiếng Việt , vui lòng nhấp vào biểu tượng quả cầu trên thanh Zoom.

You can also comment online via www.regulations.gov under Docket ID **BOEM-2023-0046-0025**



BOEM BUREAU OF OCEAN
ENERGY MANAGEMENT

Next Steps and Closing Remarks

**Ross Del Rio, NEPA Coordinator
BOEM Gulf of Mexico Region**



BOEM.gov



For media inquiries contact the Gulf of Mexico Office, Office of Communications

john.filostrat@boem.gov