

BOEM Intergovernmental Task Force Meeting | December 7, 2017 | Virginia Beach, VA

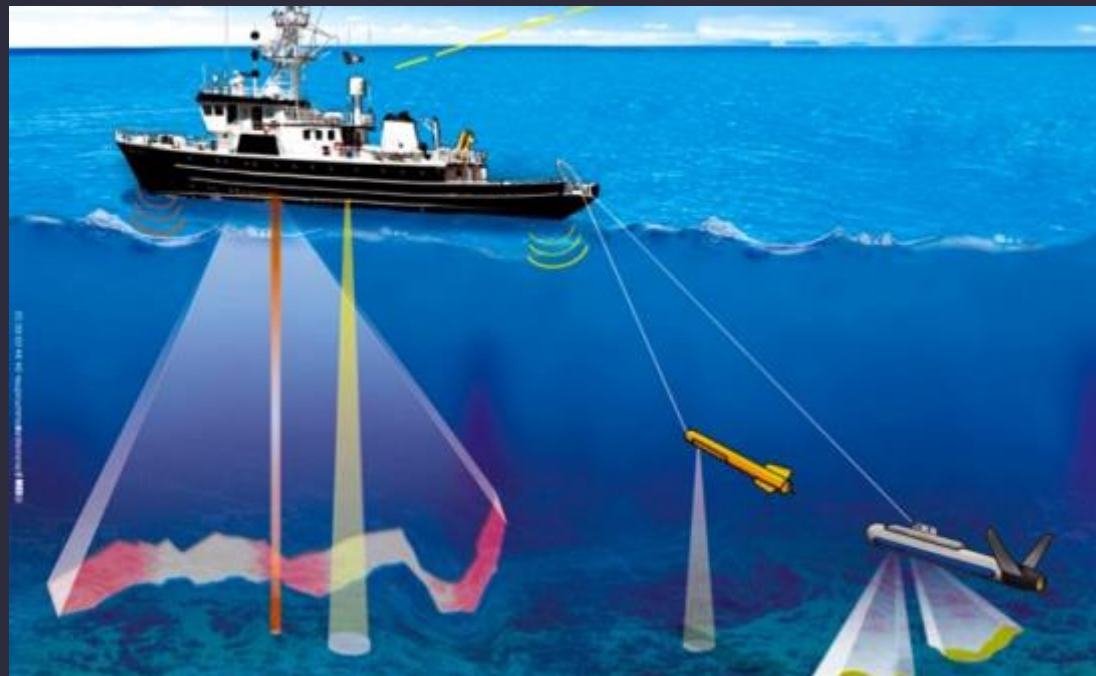
Lease OCS-A 0508 (Kitty Hawk) **Next Steps**

Will Waskes, Project Coordinator



Next Steps

Specified in Addendum B, and at 30 CFR 585.235



12 months - Preliminary Term

Each lease includes a preliminary term of 12 months (from the lease effective date) in which the lessee must submit a Site Assessment Plan (SAP) to BOEM.



4.5 years - Site Assessment Term

Upon approval of the SAP, the lessee will have up to 4 ½ years in which to submit a Construction and Operations Plan (COP) to BOEM.



25 year – Operations Term

Upon approval of the COP, the lessee will have up to 25 years to construct and operate their proposed wind facility

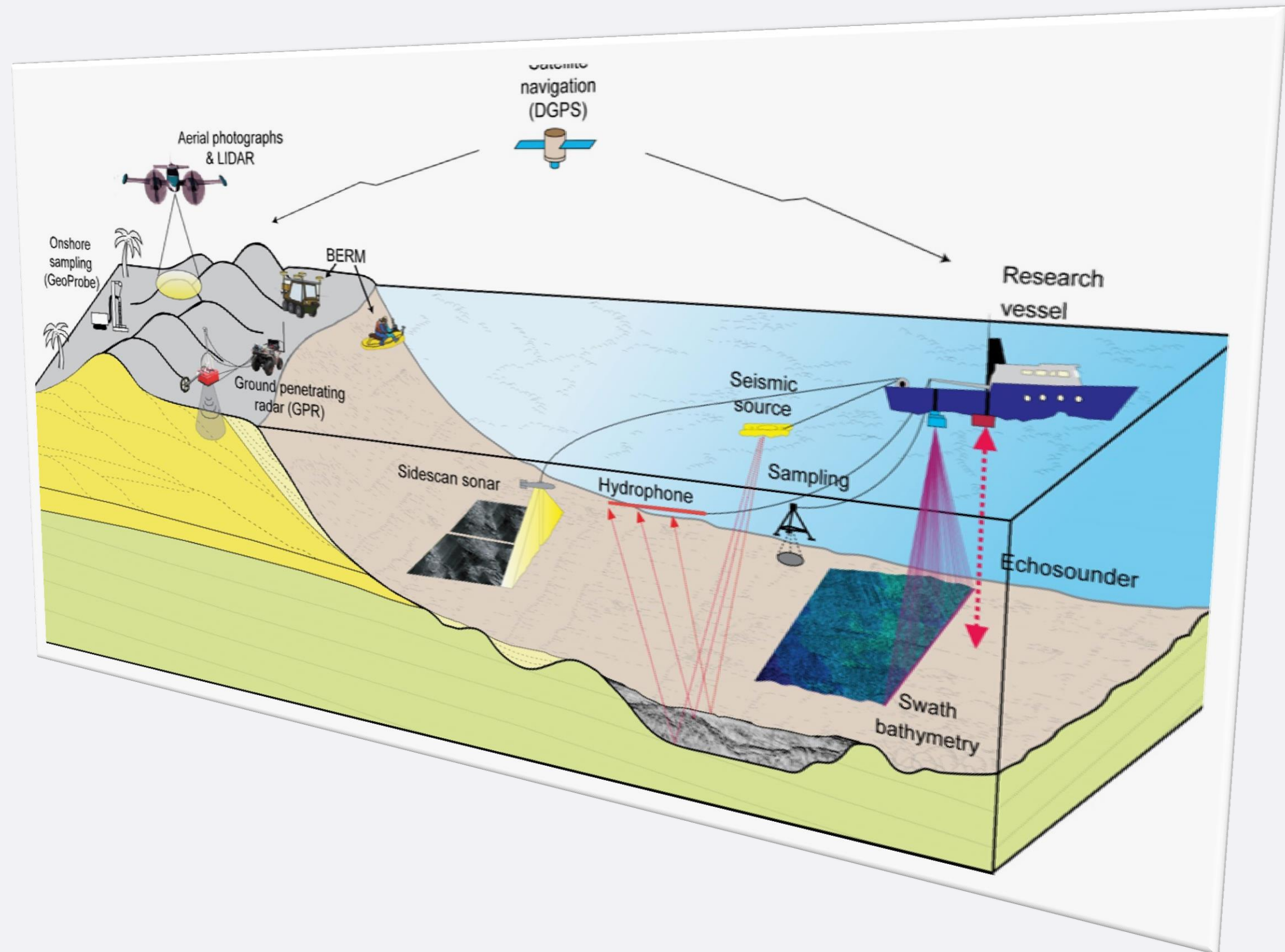
Site Characterization Activities

What and Why

Site-specific surveys conducted to collect information regarding existing resources and conditions above the water, within the water column, and on & below the seafloor.

Enables the lessee to characterize existing seafloor and sub-seafloor conditions to select and propose appropriate design, construction, and installation techniques.

Results required to be submitted with the Site Assessment Plan (SAP) & Construction and Operations Plan (COP).



Standard Operating Conditions

Addendum C



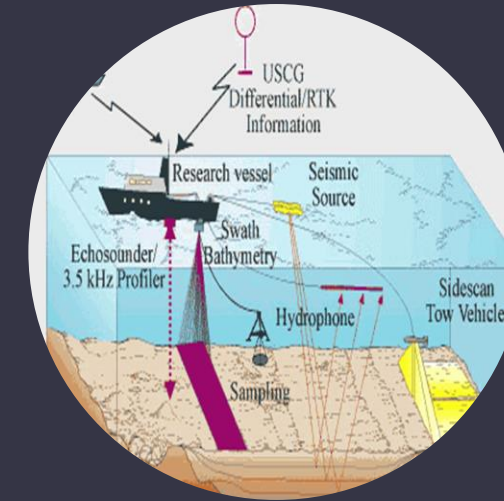
Pre-Survey
Coordination



Vessel Strike
Avoidance
Measures



Archeological
Survey
Requirements
and Discovery
Clauses



HRG and
Geotechnical
Survey
Requirements



Reporting
Requirements

Included as Standard Operating Conditions in the Lease

Survey Plan Review Process

Section 2.1.1 of Addendum C

HRG Survey Equipment Field Verification Plan

- Submitted 45 days prior to conducting surveys for equipment < 200 KHz



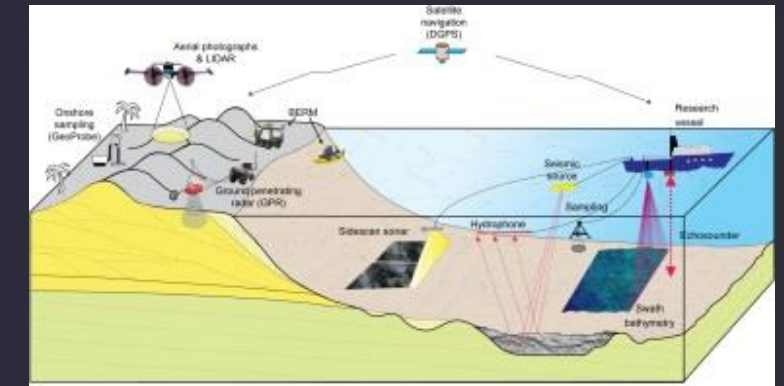
Submit Survey Plan

- Must be Submitted 30 Days Prior to Pre-Survey Meeting
- Include Results of HRG Survey Equipment Field Verification
- Include Alternate Monitoring Plan, if applicable
- Protected Species Observers for Approval



Tribal Pre-Survey Meeting

- 30 Days Prior to Conducting Surveys
- Held Subsequent to the Pre-Survey Meeting



Conduct HRG Equipment Field Verification

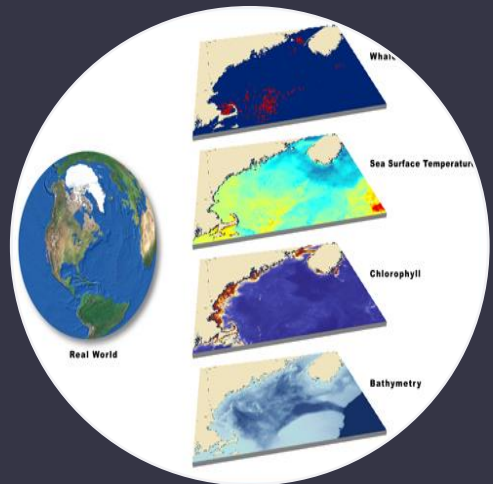
Hold Pre-Survey Meeting with BOEM

- Must Occur 60 Days Prior to Conducting Surveys

Conduct Surveys



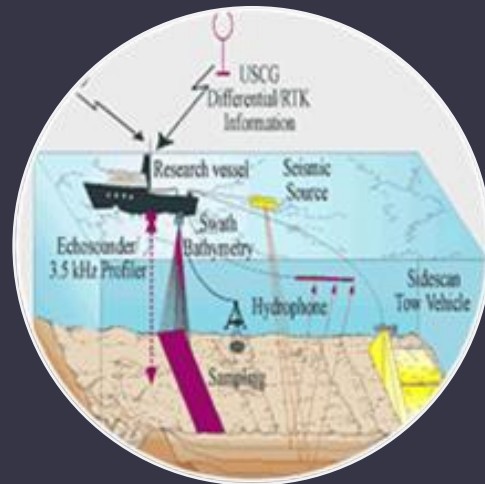
Survey Guidelines



Guidelines for Submission of Spatial Data for Site Characterization Surveys (Feb. 2013)



Guidelines for Providing Avian Survey Information (May 2017)



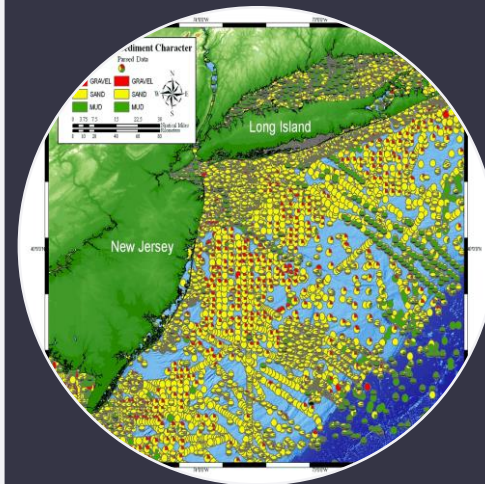
Guidelines for Providing Geological and Geophysical, Hazards Information (July 2015)



Guidelines for Archaeological and Historical Property Identification Surveys (March 2017)



Guidelines for Providing Information on Fisheries (Aug. 2013)



Guidelines for Providing Benthic Habitat Survey Information (Nov. 2013)



Guidelines for Providing Information on Marine Mammals and Sea Turtles (July 2013)

Survey Guidelines Can Be Found at: www.boem.gov/Survey-Guidelines/

Site Assessment Activities

30 CFR 585.112



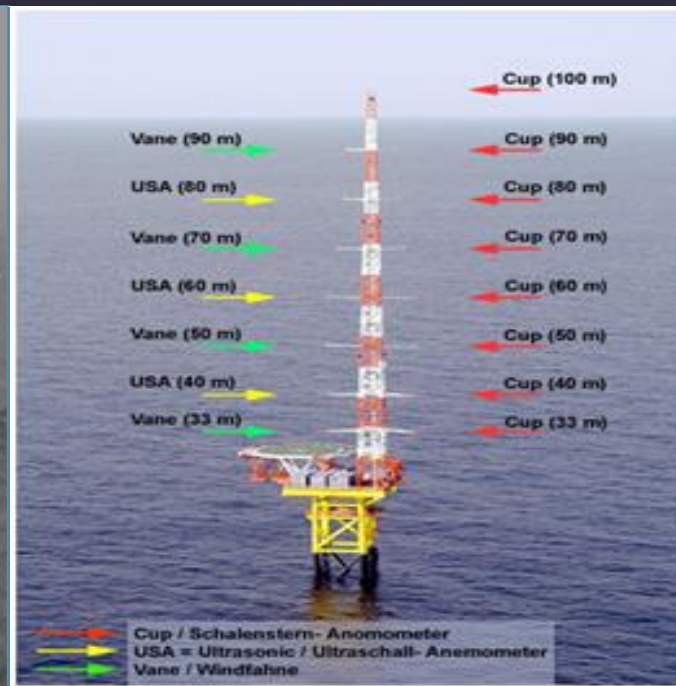
New Jersey Offshore Research Device (NJORD)

- Tension Leg Platform Design
- 40 feet above MSL
- Light Detection and Ranging (LIDAR)



AXYS Wind Sentinel

- Boat shaped hull
- 6 m in length
- LIDAR



FINO 1

- 100 m high above MSL
- Radar
- Helipad
- Hydrophones
- Video
- Anemometer



Cape Wind Met-Tower

- 60 meters high above MSL
- Anemometers



Remote Instrument Unit

- Ecological Acoustic Recorder (EAR)
- Conductivity, Temperature Depth (CTD)
- Acoustic Current Doppler Profile (ADCP)
- Trawl Resistant Bottom Mount (TRBM)

Next Steps Near Term



Submit Survey Plan
30 Days Prior to Pre-Survey Meeting



Hold Pre-Survey Meeting
60 Days Prior to Conducting Surveys



Conduct Surveys



Submit SAP
Due November 1, 2018

Address

BOEM
45600 Woodland Road
Mail Stop 45600
VAM-OREP
Sterling, Virginia 20166
www.boem.gov/North-Carolina

Email

Will.Waskes@boem.gov
Brian.Krevori@boem.gov
Motunrayo.kemiki@boem.gov

Phone

703-787-1287
703-787-1346
703-787-1343