

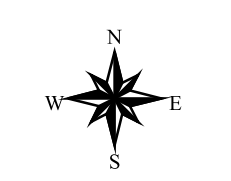
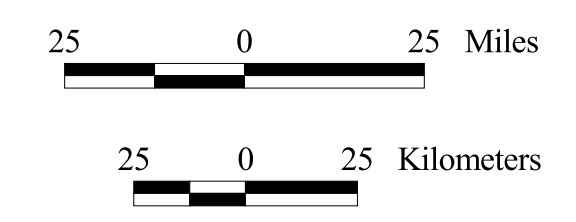
MMS United States Department of the Interior
Minerals Management Service
Gulf of Mexico OCS Region

Active Leases and WGOM Sale 187 August 2003

- Blocks receiving bids in 2003
- WGOM Sale 187
Active leases issued in 2003
- CGOM Sale 185
- Active leases issued in 2002
- WGOM Sale 184 and CGOM Sale 182
- Active leases issued prior to 2002
- Flower Garden Banks withdrawn from leasing
- Major Metropolitan areas
- Royalty Relief and Lease Term lines
- Planning Area boundary
- Selected towns and cities



Scale: 1:1690972
Projection: Albers Equal-Area Conic
Spheroid: Clarke 1866
Central Meridian: -89.17433
Reference Latitude: 27.03441
Standard Parallel 1: 24.89332
Standard Parallel 2: 29.17550



Water Depth (meters)