

AREA OF IRREGULAR BLOCKS IN HECTARES

Block Number	Total Area
6043	137.822934
6093	192.486306
6143	247.068292
6193	301.568859
6243	355.987977
6293	410.325614
6343	464.581738
6393	518.756319
6443	572.849324
6493	626.860724
6543	680.790486
6593	734.638578
6643	788.404972
6693	842.089634
6743	895.692534
6793	949.213641
6843	1002.652925
6893	1056.010354
6943	1109.285897
6993	1162.479523
7043	1215.591203
7093	1268.620905

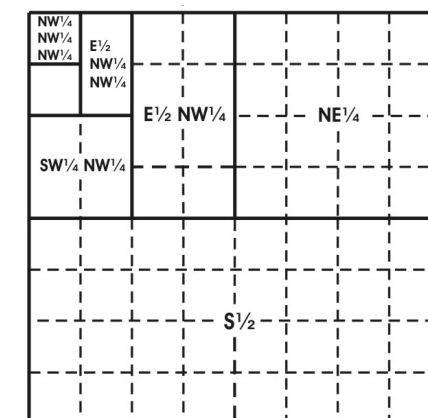
The boundaries of the regular blocks are 4,800 international meters on a side and contain 2,304 hectares. The regular boundaries are defined in terms of X and Y coordinates of the Universal Transverse Mercator Grid System based on the Geodetic Reference System (GRS) 1980 Ellipsoid.

Main Map background and Location Diagram background from Esri Ocean Basemap. Accessed February, 2023. For more information visit https://services.arcgis.com/arcgis/rest/services/Ocean/World_Ocean_Base/MapServer

The Submerged Lands Act Boundary and the Limit of "8(g) Zone" depicted hereon reflect the approximate Federal position for Submerged Lands Act and OCS Lands Act purposes.

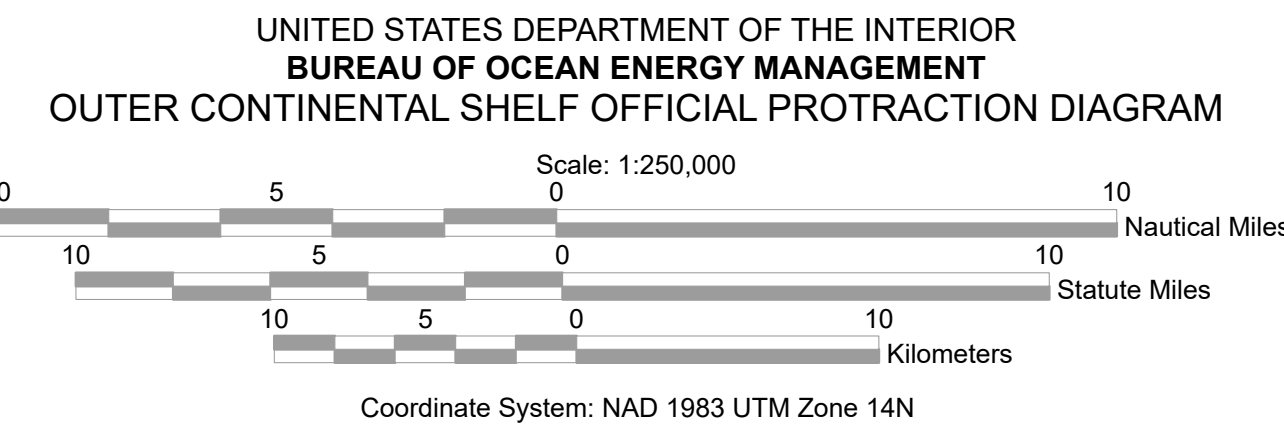
Areas and dimensions of the irregular blocks along the zone boundary are indicated.

Copies of these diagrams are available for download in PDF format from <https://www.boem.gov/gom83-cadastral-data>.

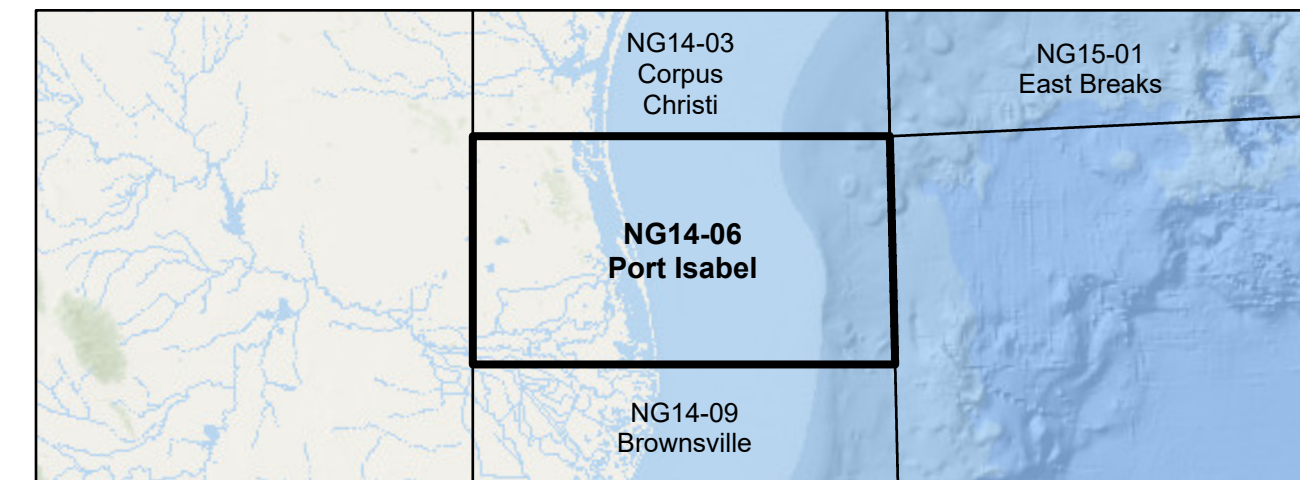


Subdivision of Blocks on the Outer Continental Shelf

Typical method of subdivision of the regular blocks, each subdivision being an aliquot part of the total, based on midpoint subdivision throughout.



LOCATION DIAGRAM



- LEGEND**
- Featured Protraction Outline
 - Protraction Outline
 - Submerged Lands Act Boundary
 - Limit of "8(g) Zone"
 - Maritime Boundary

This diagram is prepared in accordance with 30 CFR 256.8

For the Director

Beth A. Wenstrom

Beth A. Wenstrom

Chief, Geospatial Services Division, Office of Strategic Resources
Sterling, Virginia

Date: 11/1/2022