

NG14-06, Port Isabel
 SUBMERGED LANDS ACT BOUNDARY
 U.S.-MEXICO MARITIME BOUNDARY-GULF OF MEXICO
 X = 705600
 X = 287520
 6023
 6024
 LIMIT OF "8(g) ZONE"

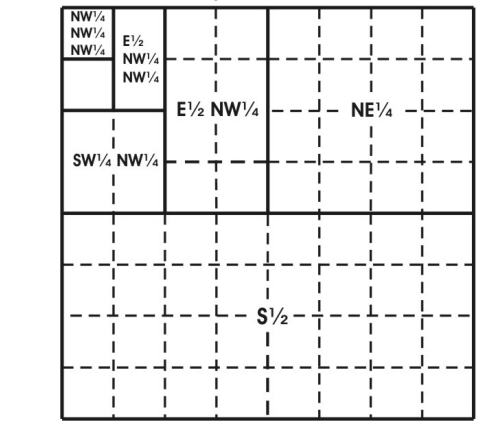
The boundaries of the regular blocks are 4,800 international meters on a side and contain 2,304 hectares. The regular boundaries are defined in terms of X and Y coordinates of the Universal Transverse Mercator Grid System based on the Geodetic Reference System (GRS) 1980 Ellipsoid.

Main Map background and Location Diagram background from Esri Ocean Basemap. Accessed February, 2023. For more information visit https://services.arcgis.com/arcgis/rest/services/Ocean/World_Ocean_Base/MapServer

The Submerged Lands Act Boundary and the Limit of "8(g) Zone" depicted hereon reflect the approximate Federal position for Submerged Lands Act and OCS Lands Act purposes.

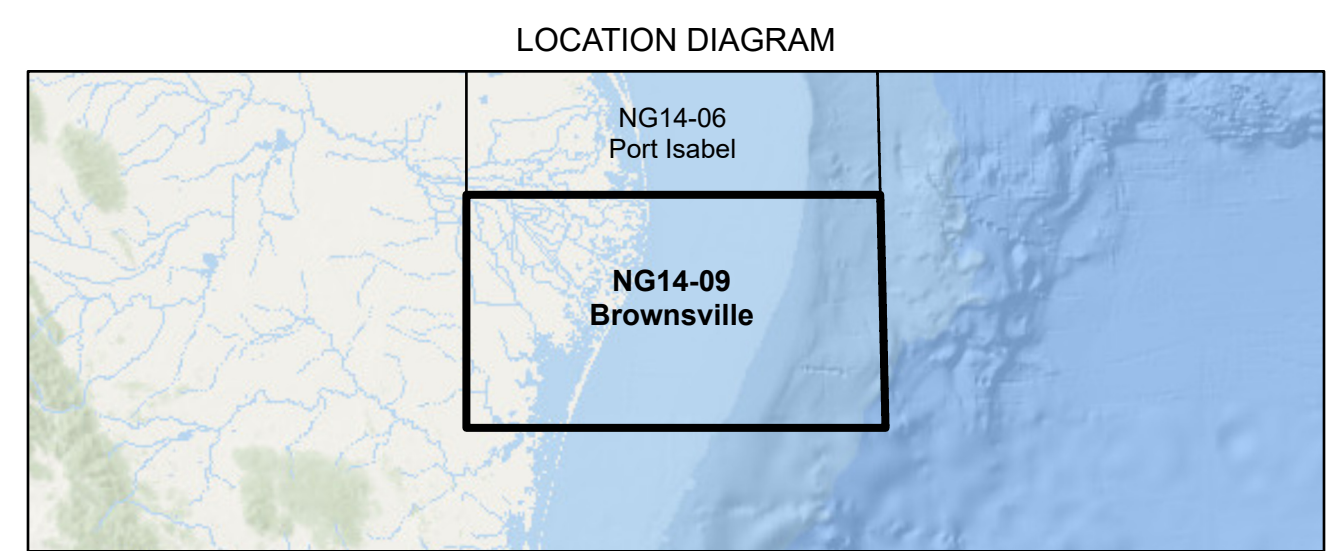
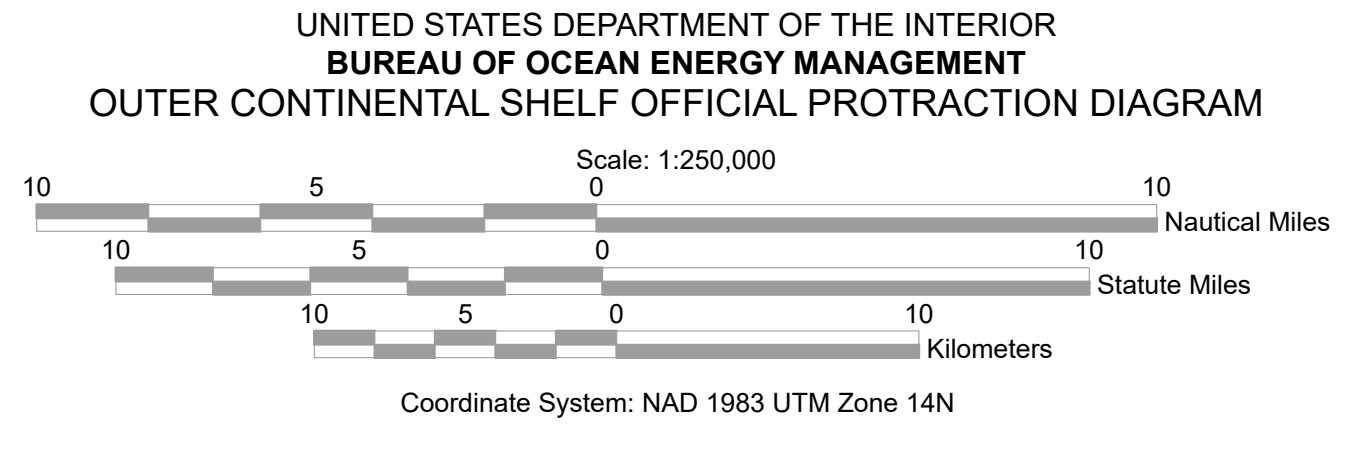
Areas and dimensions of the irregular blocks along the zone boundary are indicated.

Copies of these diagrams are available for download in PDF format from <https://www.boem.gov/gom83-cadastral-data>.



Subdivision of Blocks on the Outer Continental Shelf

Typical method of subdivision of the regular blocks, each subdivision being an aliquot part of the total, based on midpoint subdivision throughout.



- LEGEND**
- Featured Protraction Outline
 - Protraction Outline
 - Submerged Lands Act Boundary
 - Limit of "8(g) Zone"
 - Maritime Boundary

This diagram is prepared in accordance with 30 CFR 256.8

For the Director

 Beth A. Wenstrom
 Chief, Geospatial Services Division, Office of Strategic Resources
 Sterling, Virginia
 Date: 11/1/2022