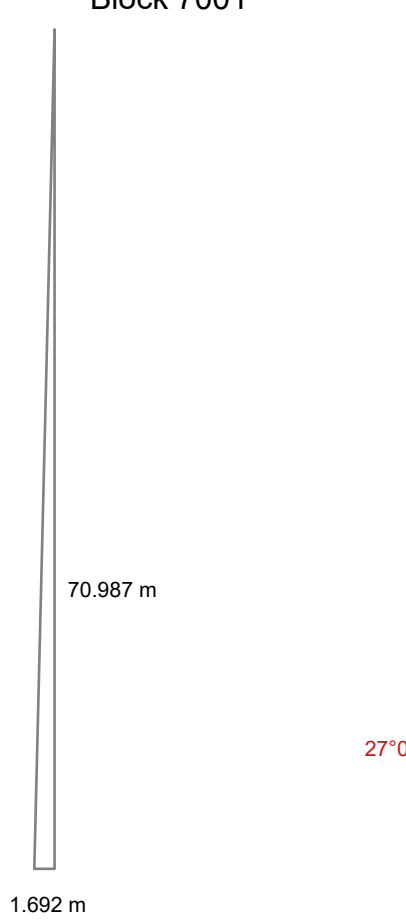


AREA OF IRREGULAR BLOCKS IN HECTARES

Block Number	Total Area
6002	1162.175941
6052	1218.70239
6102	1275.148192
6152	1331.513312
6202	1387.797719
6252	1444.00138
6302	1500.124263
6352	1556.166335
6402	1612.127563
6452	1668.007917
6502	1723.807362
6552	1779.525867
6602	1835.1634
6652	1890.719929
6702	1946.195421
6752	2001.589844
6802	2056.903167
6852	2112.136358
6902	2167.286394
6952	2222.366214
7001	0.006005
7002	2277.338811
7051	28.252157
7101	83.078208



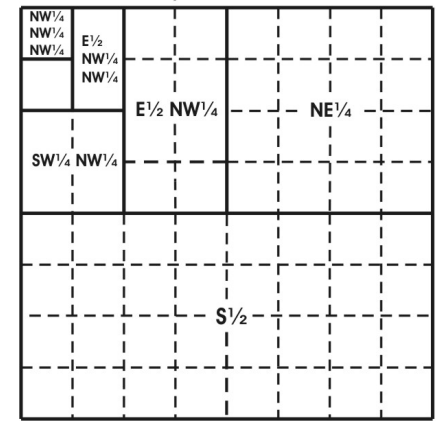
ENLARGEMENT DIAGRAM
Block 7001



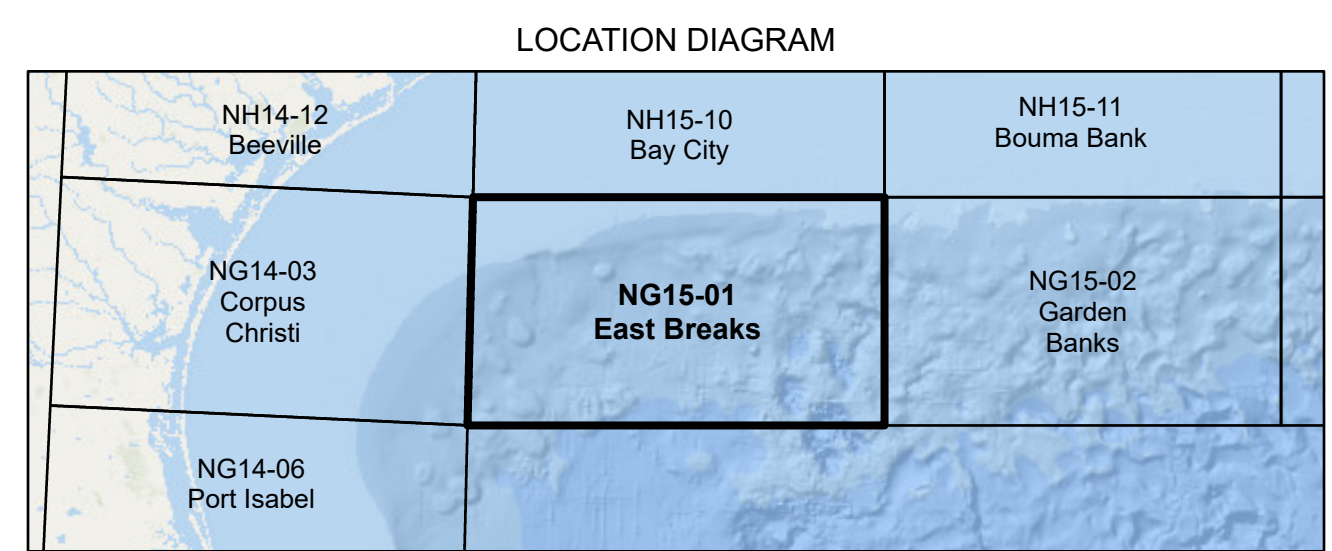
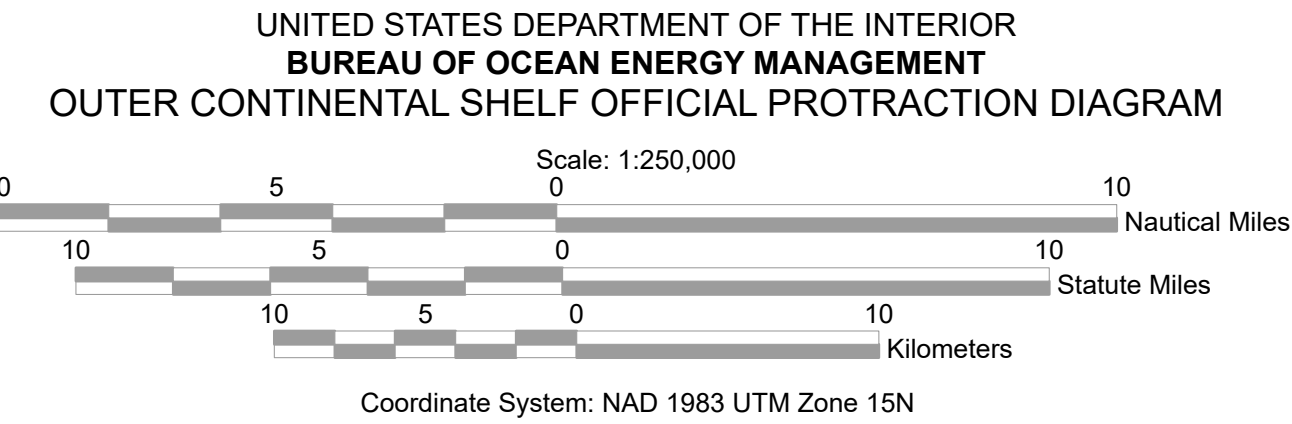
The boundaries of the regular blocks are 4,800 international meters on a side and contain 2,304 hectares. The regular boundaries are defined in terms of X and Y coordinates of the Universal Transverse Mercator Grid System based on the Geodetic Reference System (GRS) 1980 Ellipsoid.

Main Map background and Location Diagram background from Esri Ocean Basemap. Accessed February, 2023. For more information visit https://services.arcgis.com/arcgis/rest/services/Ocean/World_Ocean_Base/MapServer

Areas and dimensions of the irregular blocks along the zone boundary are indicated. Copies of these diagrams are available for download in PDF format from <https://www.boem.gov/gom83-cadastral-data>.



Subdivision of Blocks on the Outer Continental Shelf
Typical method of subdivision of the regular blocks, each subdivision being an aliquot part of the total, based on midpoint subdivision throughout.



LEGEND

This diagram is prepared in accordance with 30 CFR 256.8
 For the Director

 Beth A. Wenstrom
 Chief, Geospatial Services Division, Office of Strategic Resources
 Sterling, Virginia
 Date: 11/1/2022