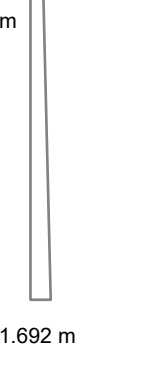


AREA OF IRREGULAR BLOCKS IN Hectares

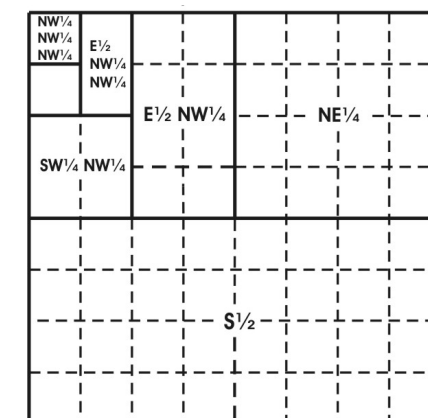
Block Number	Total Area
6042	1162.175941
6092	1218.70239
6142	1275.148192
6192	1331.513312
6242	1387.797719
6292	1444.00138
6342	1500.124263
6392	1556.166335
6442	1612.127563
6492	1668.007917
6542	1723.807362
6592	1779.525867
6642	1835.1634
6692	1890.719929
6742	1946.195421
6792	2001.589844
6842	2056.903167
6892	2112.135358
6942	2167.285384
6992	2222.356214
7042	2277.338811
7093	28.252157
7143	83.078208

ENLARGEMENT DIAGRAM  
Block 7043

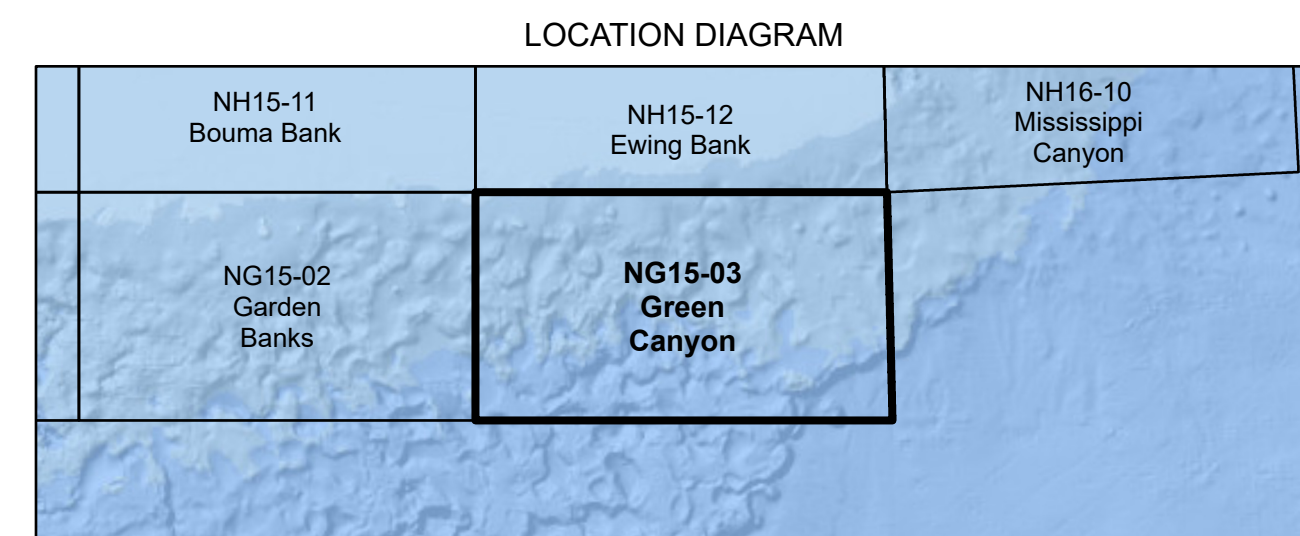
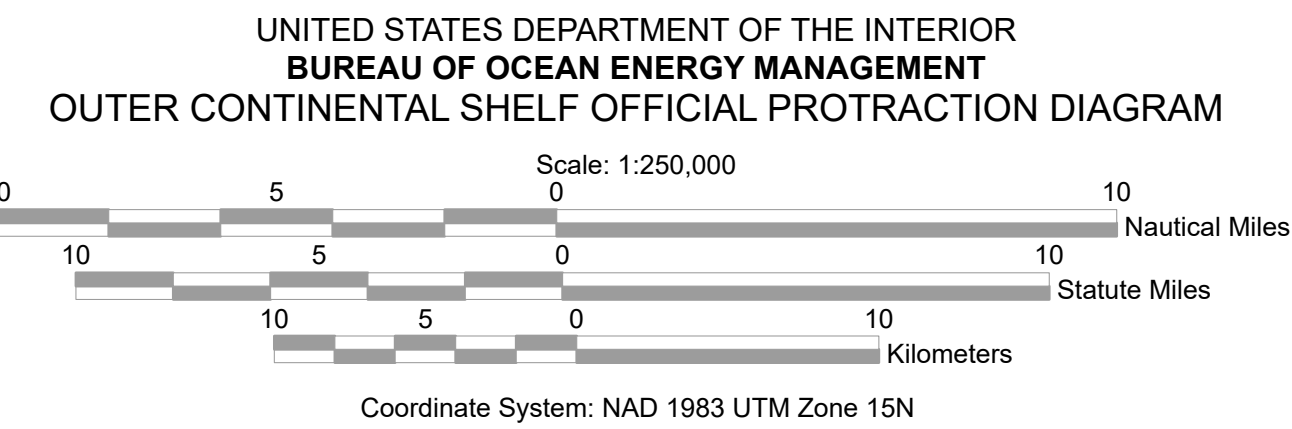


The boundaries of the regular blocks are 4,800 international meters on a side and contain 2,304 hectares. The regular boundaries are defined in terms of X and Y coordinates of the Universal Transverse Mercator Grid System based on the Geodetic Reference System (GRS) 1980 Ellipsoid.

Areas and dimensions of the irregular blocks along the zone boundary are indicated. Copies of these diagrams are available for download in PDF format from <https://www.boem.gov/gom83-cadastral-data>.



Subdivision of Blocks on the Outer Continental Shelf  
Typical method of subdivision of the regular blocks, each subdivision being an aliquot part of the total, based on midpoint subdivision throughout.



LEGEND

- Featured Protraction Outline
- Protraction Outline
- National Marine Sanctuary

This diagram is prepared in accordance with 30 CFR 256.8

For the Director

*Beth A. Wenstrom*

Beth A. Wenstrom

Chief, Geospatial Services Division, Office of Strategic Resources  
Sterling, Virginia

Date: 11/1/2022