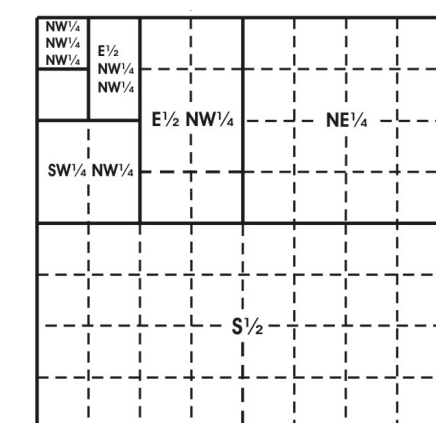


The boundaries of the regular blocks are 4,800 international meters on a side and contain 2,304 hectares. The regular boundaries are defined in terms of X and Y coordinates of the Universal Transverse Mercator Grid System based on the Geodetic Reference System (GRS) 1980 Ellipsoid.

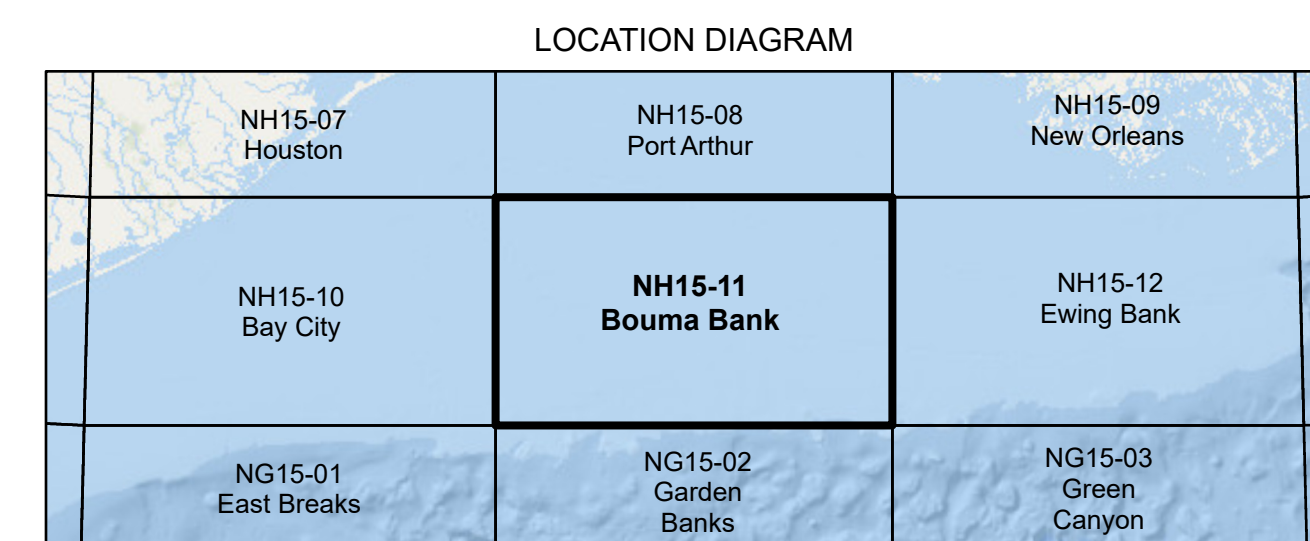
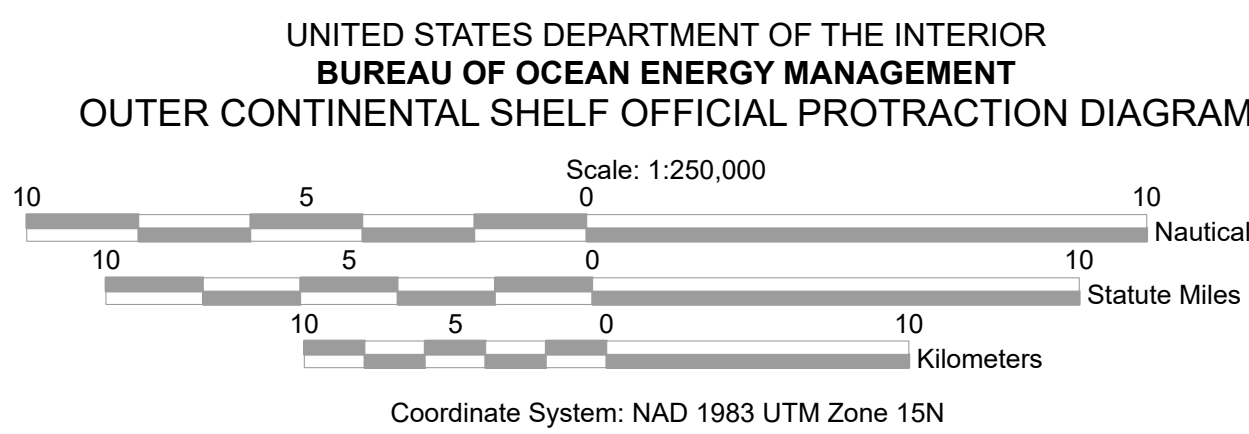
Copies of these diagrams are available for download in PDF format from <https://www.boem.gov/gom83-cadastral-data>.

Main Map background and Location Diagram background from Esri Ocean Basemap. Accessed February, 2023. For more information visit https://services.arcgis.com/arcgis/rest/services/Ocean/World_Ocean_Base/MapServer



Subdivision of Blocks on the Outer Continental Shelf

Typical method of subdivision of the regular blocks, each subdivision being an aliquot part of the total, based on midpoint subdivision throughout.



- LEGEND**
- Featured Protraction Outline
 - Protraction Outline
 - National Marine Sanctuary
 - Planning Area Boundary

This diagram is prepared in accordance with 30 CFR 256.8

For the Director

Beth A. Wenstrom

Beth A. Wenstrom

Chief, Geospatial Services Division, Office of Strategic Resources

Sterling, Virginia

Date: 11/1/2022