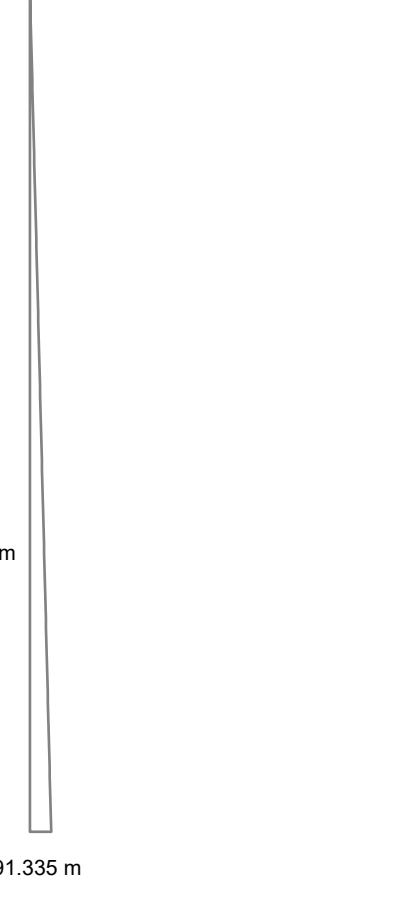


AREA OF IRREGULAR BLOCKS IN HECTARES

Block Number	Total Area
6041	2143.884358
6091	2202.256613
6141	2260.548982
6191	2302.236551
6192	16.325781
6242	72.893629
6292	130.94644
6342	188.91893
6392	246.811367
6442	304.623717
6492	362.355947
6542	420.008023
6592	477.579912
6642	535.071581
6692	592.482996
6742	649.814125
6792	707.064934
6842	764.23539
6892	821.325461
6942	878.335113
6992	935.264313
7042	992.113029
7092	1048.881227
7142	1105.568876

ENLARGEMENT DIAGRAM
Block 6192



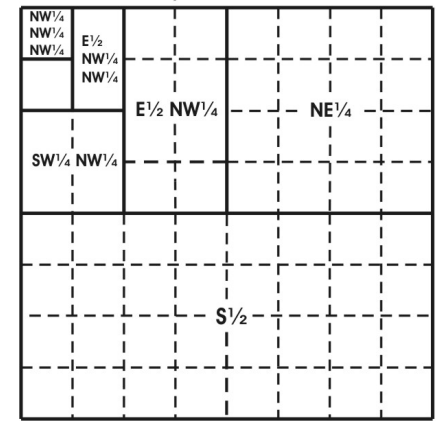
The boundaries of the regular blocks are 4,800 international meters on a side and contain 2,304 hectares. The regular boundaries are defined in terms of X and Y coordinates of the Universal Transverse Mercator Grid System based on the Geodetic Reference System (GRS) 1980 Ellipsoid.

Main Map background and Location Diagram background from Esri Ocean Basemap. Accessed February, 2023. For more information visit https://services.arcgis.com/arcgis/rest/services/Ocean/World_Ocean_Base/MapServer

The Limit of "8(g) Zone" depicted hereon reflects the approximate Federal position for Submerged Lands Act and OCS Lands Act purposes.

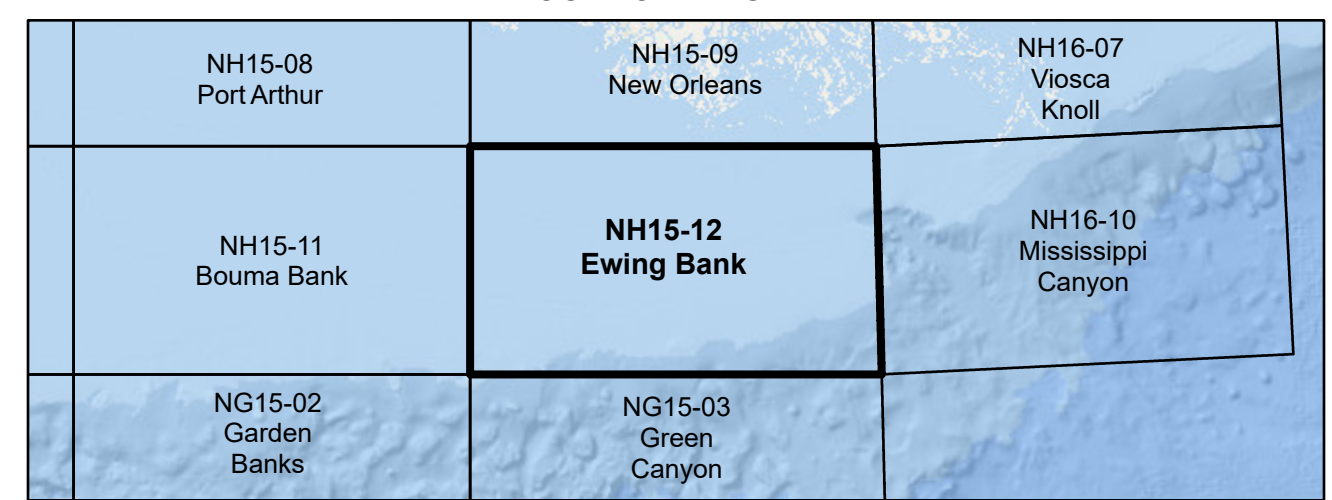
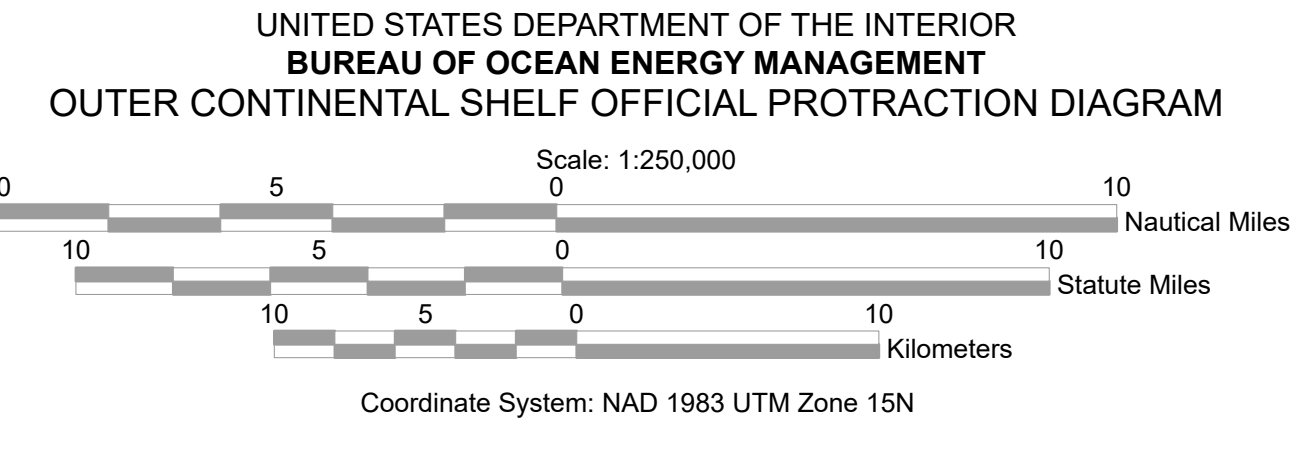
Areas and dimensions of the irregular blocks along the zone boundary are indicated.

Copies of these diagrams are available for download in PDF format from <https://www.boem.gov/gom83-cadastral-data>.



Subdivision of Blocks on the Outer Continental Shelf

Typical method of subdivision of the regular blocks, each subdivision being an aliquot part of the total, based on midpoint subdivision throughout.



- LEGEND**
- Featured Protraction Outline
 - Protraction Outline
 - Marine Protected Area (fill)
 - Limit of "8(g) Zone"

This diagram is prepared in accordance with 30 CFR 256.8

For the Director
Beth A. Wenstrom
Beth A. Wenstrom
Chief, Geospatial Services Division, Office of Strategic Resources
Sterling, Virginia
Date: 11/1/2022