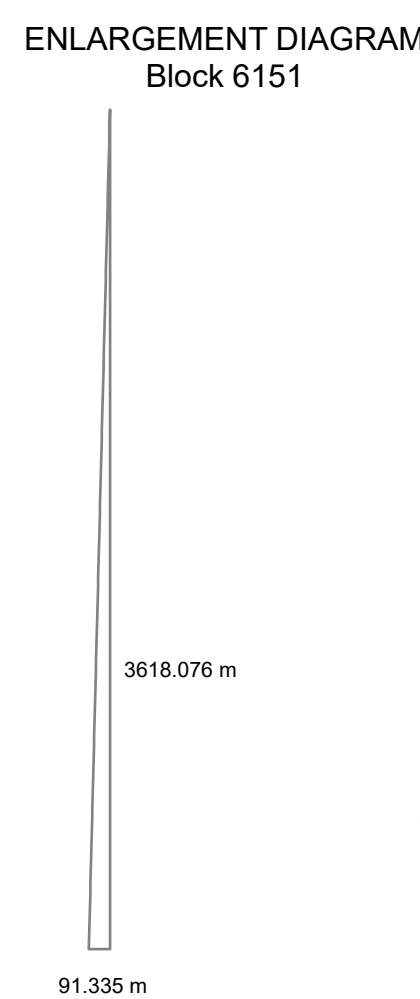
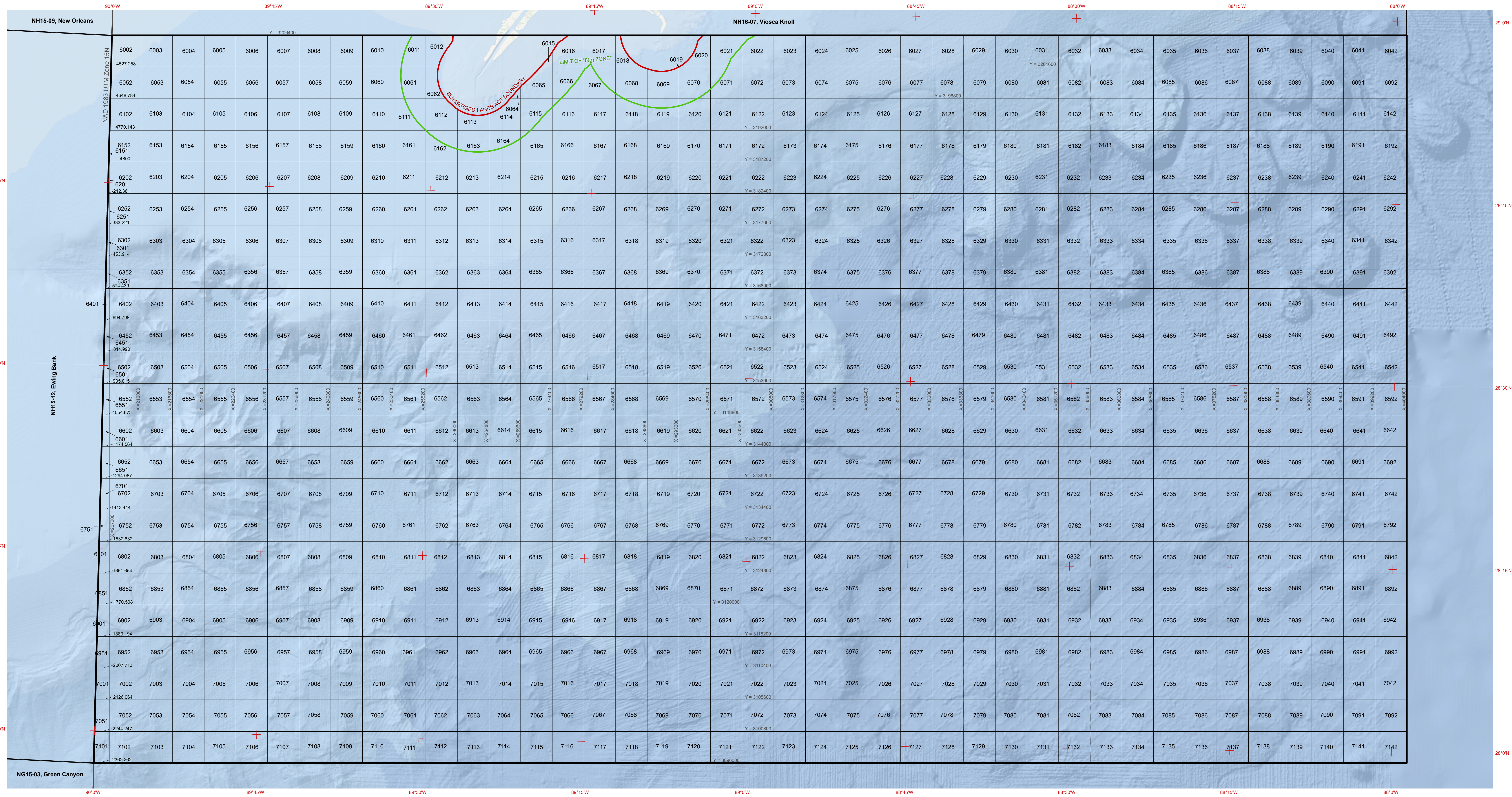


AREA OF IRREGULAR BLOCKS IN HECTARES

Block Number	Total Area
6002	2143.884358
6052	2202.256613
6102	2260.548982
6151	16.525781
6152	2302.236651
6201	72.893929
6251	130.94644
6301	188.91893
6351	246.811367
6401	304.623717
6451	362.355947
6501	420.008023
6551	477.579912
6601	535.071581
6651	592.482996
6701	649.814125
6751	707.064934
6801	764.23539
6851	821.325481
6901	878.335113
6951	935.264313
7001	992.113029
7051	1048.881227
7101	1105.568876



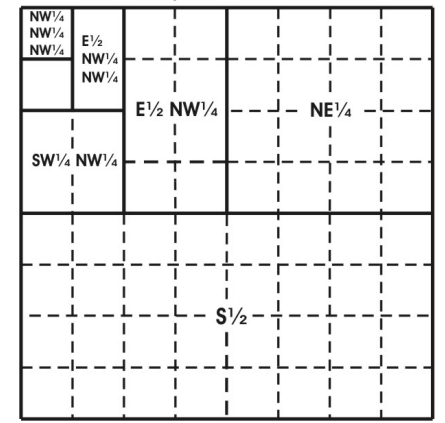
The boundaries of the regular blocks are 4,800 international meters on a side and contain 2,304 hectares. The regular boundaries are defined in terms of X and Y coordinates of the Universal Transverse Mercator Grid System based on the Geodetic Reference System (GRS) 1980 Ellipsoid.

Main Map background and Location Diagram background from Esri Ocean Basemap. Accessed February, 2023. For more information visit https://services.arcgis.com/arcgis/rest/services/Ocean/World_Ocean_Base/MapServer

The Submerged Lands Act Boundary and the Limit of "8(g) Zone" depicted hereon reflect the approximate Federal position for Submerged Lands Act and OCS Lands Act purposes.

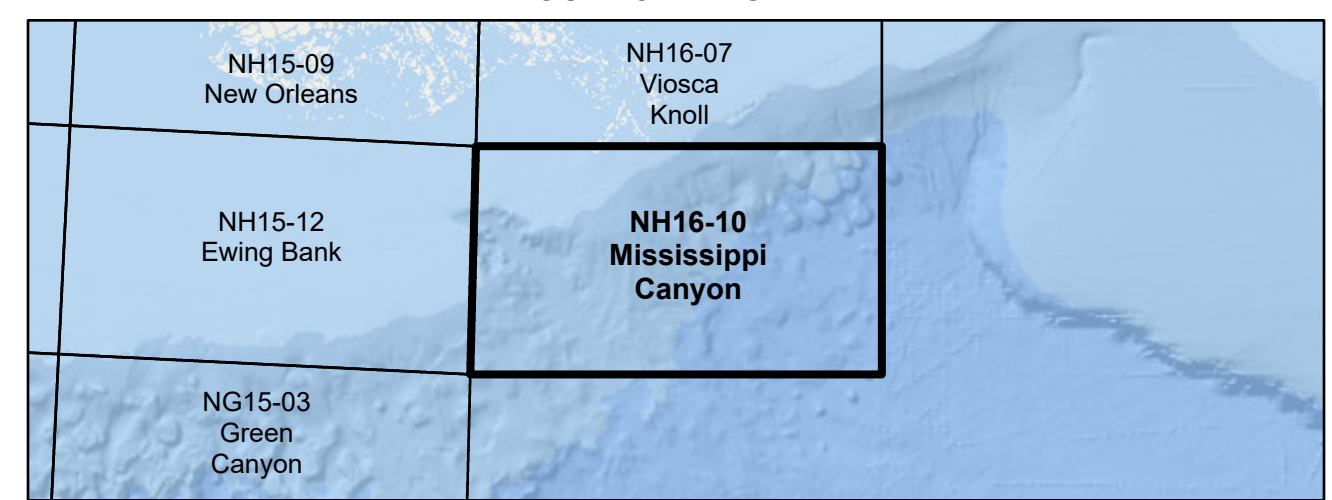
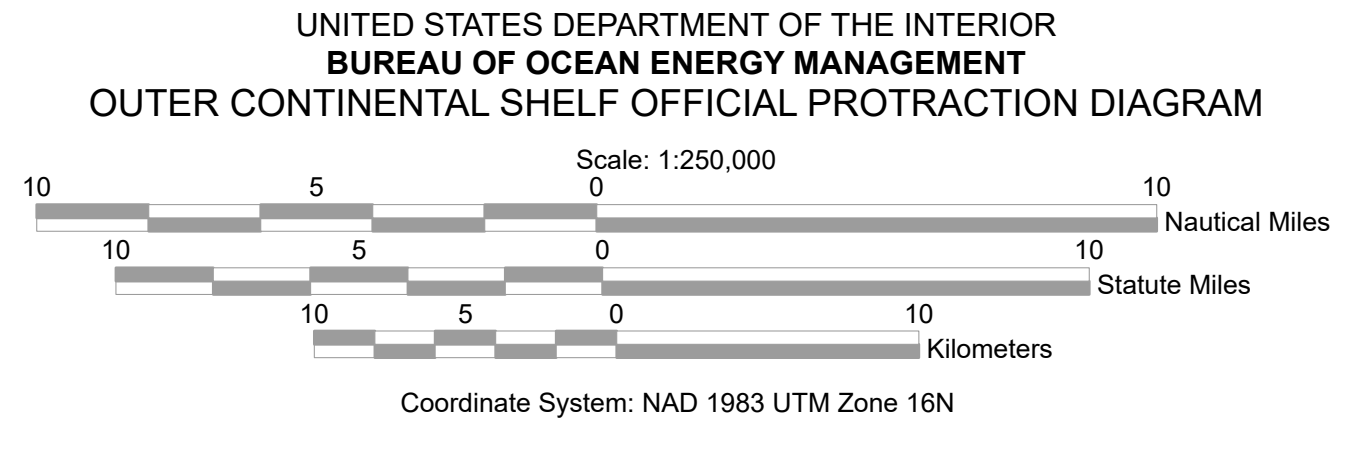
Areas and dimensions of the irregular blocks along the zone boundary are indicated.

Copies of these diagrams are available for download in PDF format from <https://www.boem.gov/gom83-cadastral-data>.



Subdivision of Blocks on the Outer Continental Shelf

Typical method of subdivision of the regular blocks, each subdivision being an aliquot part of the total, based on midpoint subdivision throughout.



- LEGEND**
- Featured Protraction Outline
 - Protraction Outline
 - Submerged Lands Act Boundary
 - Limit of "8(g) Zone"

This diagram is prepared in accordance with 30 CFR 256.8

For the Director
Beth A. Wenstrom
Beth A. Wenstrom
Chief, Geospatial Services Division, Office of Strategic Resources
Sterling, Virginia
Date: 11/1/2022