

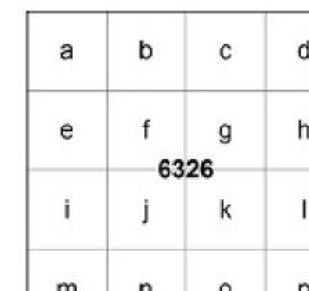
The boundaries of the regular aliquots are 1,200 meters on a side and contain 144 hectares. The regular boundaries are defined in terms of X and Y coordinates of the Universal Transverse Mercator Grid System based on the Geodetic Reference System (GRS) 1980 Ellipsoid.

Main Map background and Location Diagram background from Esri Ocean Basemap. Accessed February, 2023. For more information visit https://services.arcgis.com/arcgis/rest/services/Ocean/World_Ocean_Base/MapServer

The Submerged Lands Act Boundary and the Limit of "8(p) Zone" depicted hereon reflect the approximate Federal position for Submerged Lands Act and OCS Lands Act purposes.

Copies of these diagrams are available for download in PDF format from <https://www.boem.gov/gom83-cadastral-data>.

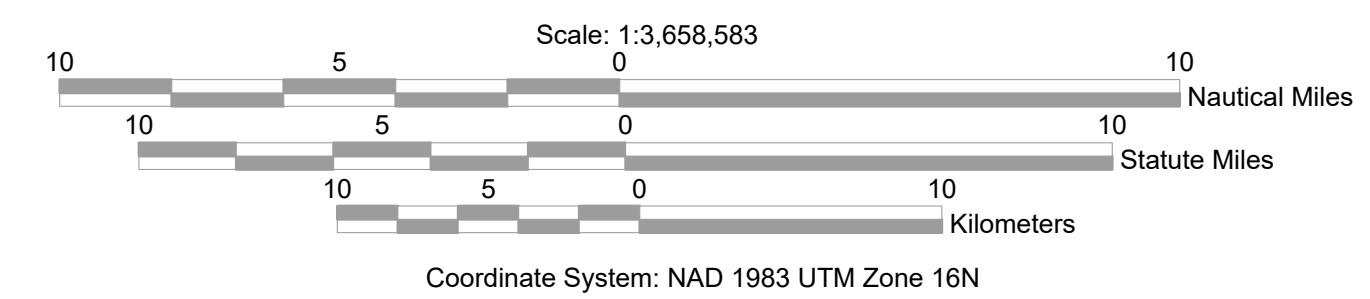
OPAD ALIQUOT DIAGRAM



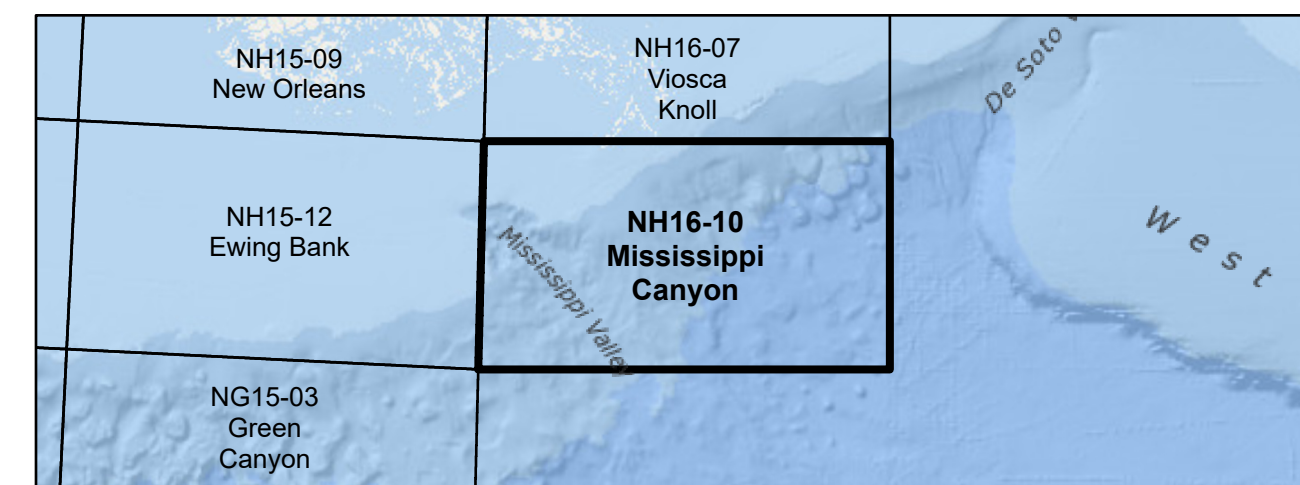
Subdivision of Blocks on the Outer Continental Shelf

Method for subdividing OCS blocks into 16 aliquots. Each aliquot is assigned a standardized sub-block letter in addition to its corresponding OCS block number.

**UNITED STATES DEPARTMENT OF THE INTERIOR
BUREAU OF OCEAN ENERGY MANAGEMENT
OUTER CONTINENTAL SHELF OFFICIAL PROTRACTION ALIQUOT DIAGRAM**



LOCATION DIAGRAM



- LEGEND**
- Featured Protraction Outline
 - Protraction Outline
 - Aliquots
 - Submerged Lands Act Boundary
 - Limit of "8(p) Zone"

This diagram is prepared in accordance with 30 CFR 256.8

For the Director
Beth A. Wenstrom
Beth A. Wenstrom
Chief, Geospatial Services Division, Office of Strategic Resources
Sterling, Virginia
Date: 11/1/2022