

The Oregon Ocean Uses Atlas

Collecting expert community knowledge on ocean uses through participatory mapping

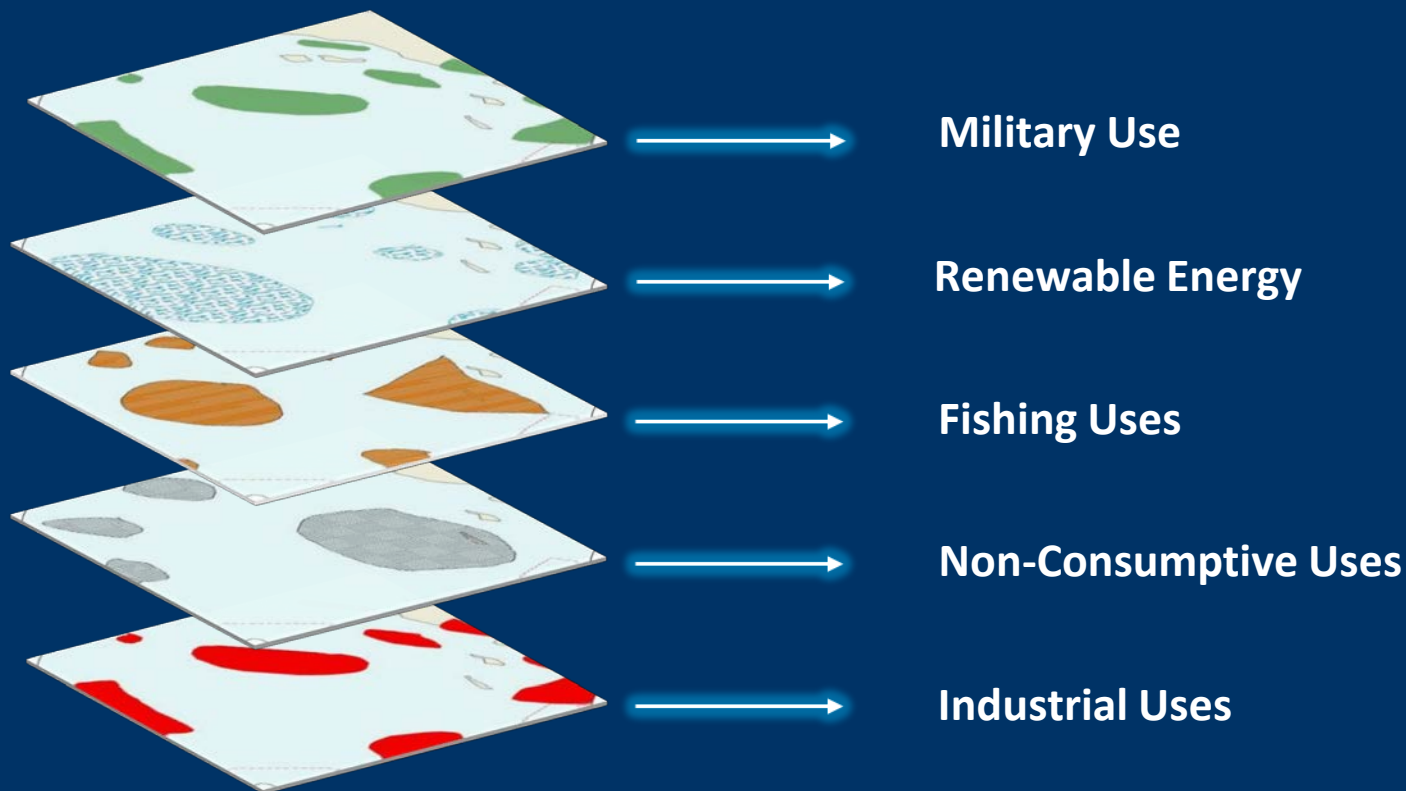
*Update on Oregon State Workshops
held June 3-7th, 2013
in Portland, Coos Bay & Newport*



NOAA Coastal Services Center
LINKING PEOPLE, INFORMATION, AND TECHNOLOGY

The Pacific Regional Ocean Uses Atlas

Comprehensive, Continuous, and Consistent Spatial Data on Ocean Uses



NOAA Coastal Services Center
LINKING PEOPLE, INFORMATION, AND TECHNOLOGY

Participatory Mapping (pGIS)

- Adapts historically proven social science methods
- Collects expert knowledge using consistent, repeatable, reliable methods
- Engages communities and stakeholders to help solve planning challenges
- Captures use perspectives from actual ocean users



Target List of Uses in Oregon

Industrial/Military

- Commercial Shipping
- Dumping and Outfall Sites
- Mariculture
- Military Operations & Ordnance Disposal
- Mining and Mineral Extraction
- Renewable Energy
- Sediment Extraction
- Underwater Pipelines
- Underwater Cables



Extractive

- Commercial Fishing with Benthic Fixed Gear
- Commercial Fishing with Benthic Mobile Gear
- Commercial Pelagic Fishing
- Commercial Seaweed Harvest
- Recreational Fishing from Boats for Benthic Species
- Recreational Fishing from Boats for Pelagic Species
- Subsistence Fishing & Harvest

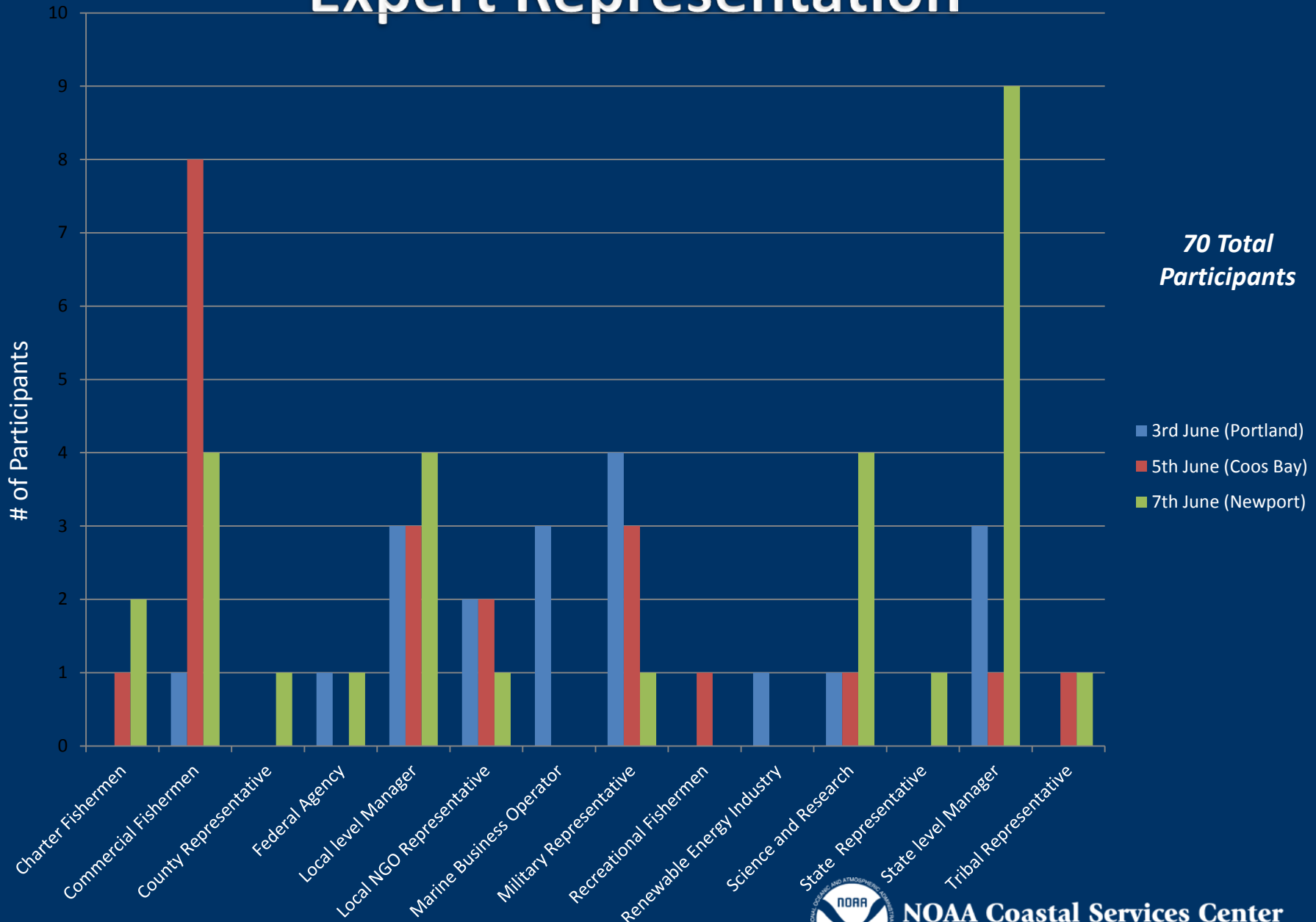


Non-Extractive

- Cultural Use
- Motorized Boating
- Permanent Research Areas
- Sailing
- Tourism Cruise Ships
- Wildlife Viewing at Sea



Expert Representation



Workshop Strategy



- Convene experts
- Break into groups
- Demo tools and process
- Facilitate mapping exercise
- Complete use questionnaire
- Evaluate process

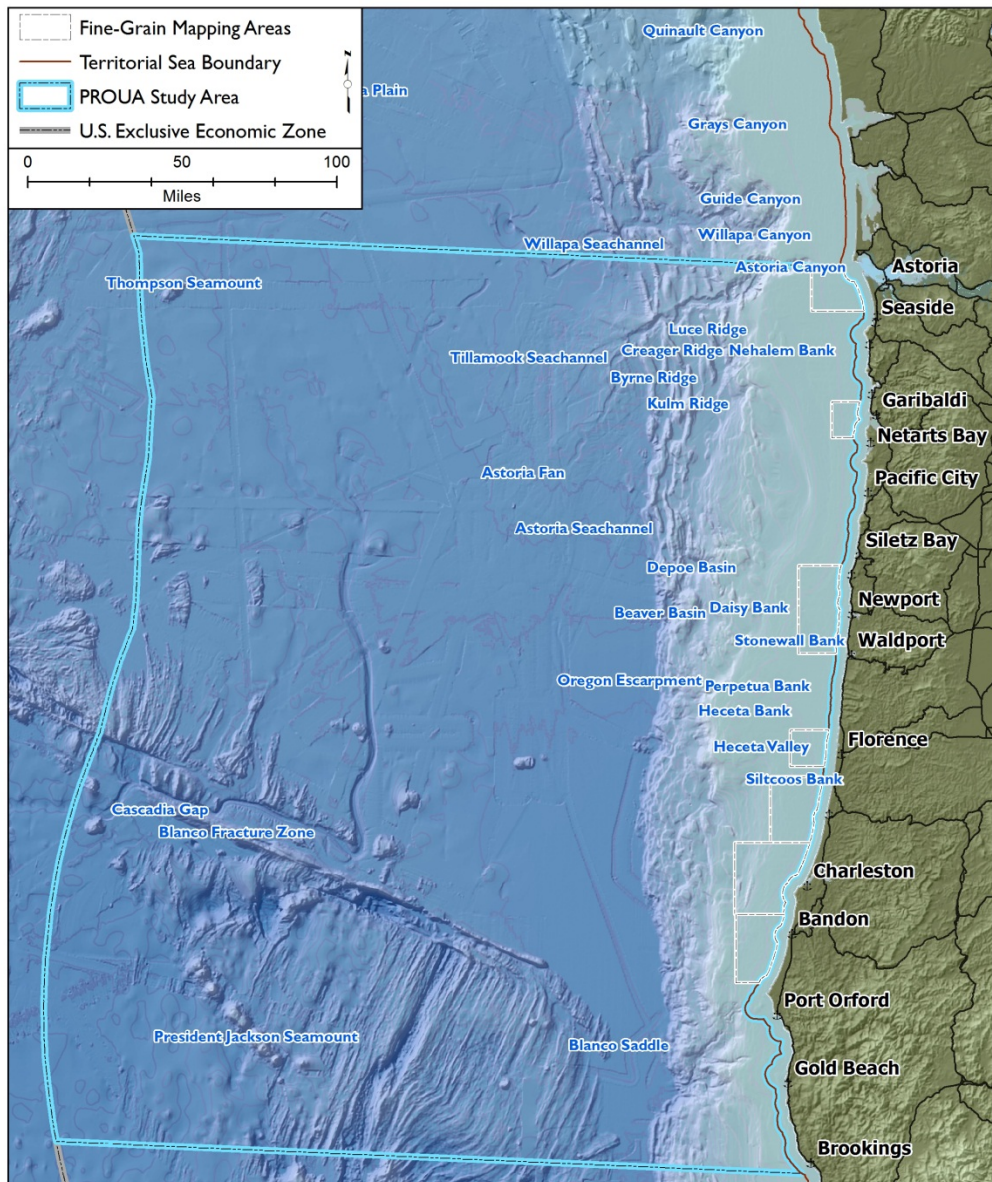
- ❖ Redundancy
- ❖ Data Validation
- ❖ Product Development



Workshop Considerations

- Existing Data
- Dominant Use
- Broad Use/Fine Grain Areas
- Territorial Sea

The 7 fine-grained mapping areas delineated here are those areas that appear most prospective for renewable energy development. BOEM anticipates these are the most likely locations within which unsolicited OCS leases requests may be received from prospective developers. Based on current information, these are areas where the wind and wave energy resources, distance from a port, and potential grid connections are most suitable, i.e., where developers' technical criteria appear to be met.



THE OREGON OCEAN USES ATLAS

Collecting expert community knowledge on ocean uses through participatory mapping
June 2013



NOAA Coastal Services Center
LINKING PEOPLE, INFORMATION, AND TECHNOLOGY

Timeline

Washington State

Workshops - April 2013

Washington Products - June 2013

Draft Data Validation planned for Summer 2013



Oregon State

Workshops completed Spring 2013

Draft Data Validation planned for Fall 2013

State of Hawai'i

Fall 2013 – Summer 2014

Workshops planned for Spring 2014

Final Project Data and Deliverables

Due to BOEM by June 2015



For more information:

Mimi D'lorio:
Mimi.Diorio@noaa.gov

Hugo Selbie:
Hugo.Selbie@noaa.gov

Sara Gultinan:
Sara.Gultinan@boem.gov



This project was funded by the U.S. Department of the Interior, Bureau of Ocean Energy Management, through an Interagency Agreement with the U.S. Department of Commerce, National Oceanic and Atmospheric Administration, National Ocean Service.



NOAA Coastal Services Center
LINKING PEOPLE, INFORMATION, AND TECHNOLOGY